



MUSEVO

AS-320

USER MANUAL

Please read the manual carefully
before using the unit

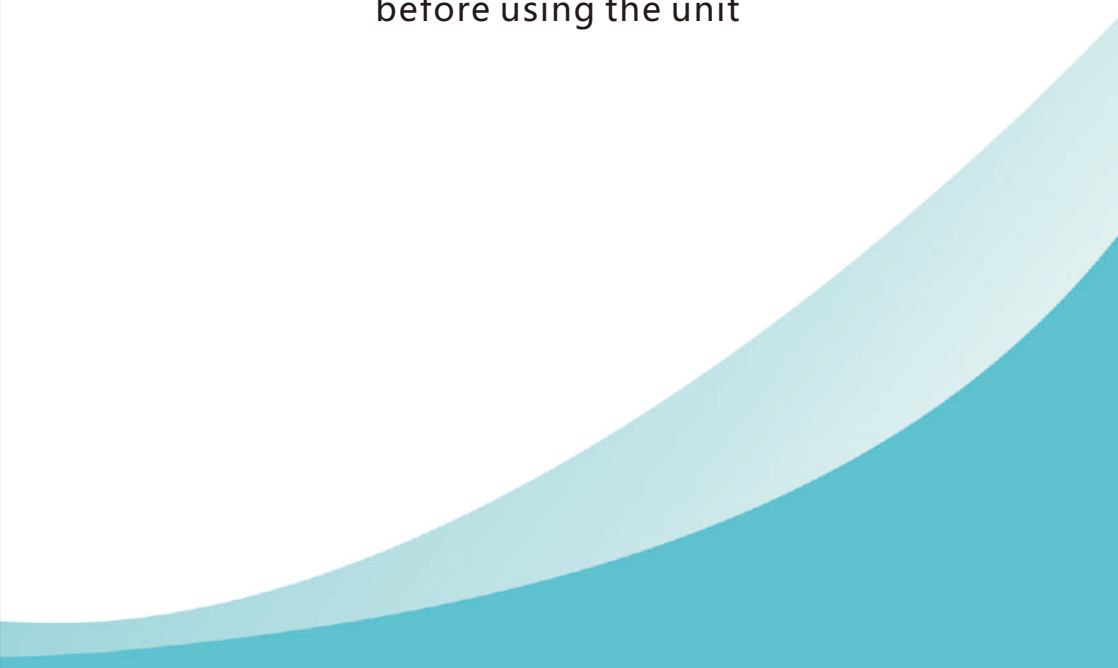


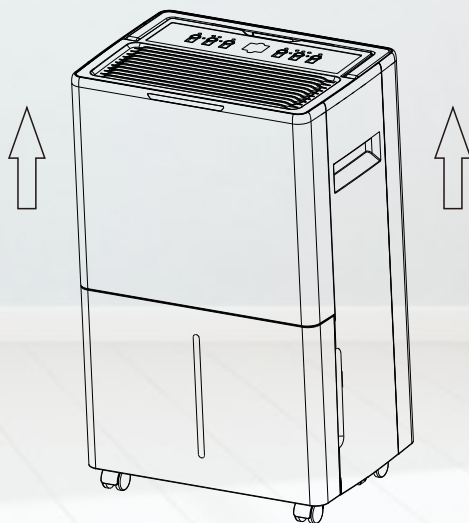
TABLE OF CONTENTS

Safety Precautions	01
Product Overview	02
Operation Instruction	03-10
Cleaning and Maintenance	11
Troubleshooting	12-14
Important Safety Tips	15
Specifications	16
Product Warranty Information	17

BEFORE FIRST USE

To prevent any internal damage,
it is very important to keep refrigeration
units (like this one) upright throughout
their journey.

Please leave it standing upright and
outside the box for 24 hours before
plugging it in.



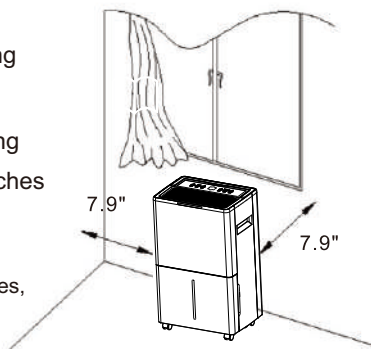
SAFETY PRECAUTIONS

Safety notes:

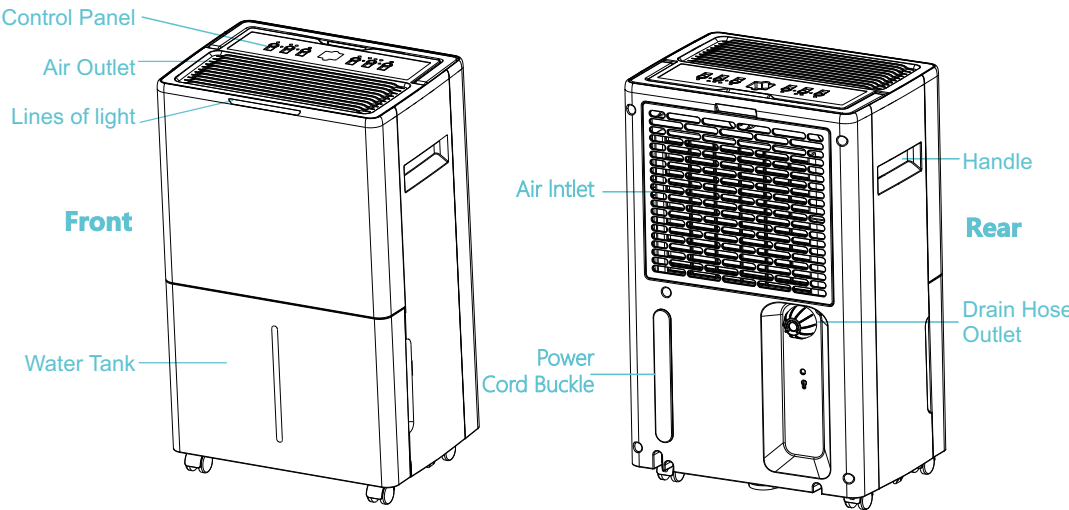
- Thank you very much for choosing Aiusevo, wish our dehumidifiers could help to guarantee the health of your whole family.
- To operate the dehumidifier better and achieve the best effect, please read the manual carefully before first use and keep it for future reference.
- Please check if there is any damage around the machine, if the machine is damaged, please contact customer service immediately.

IMPORTANT NOTICE FOR FIRST TIME USE:

- Before cleaning the dehumidifier, turn off the power and unplug it from the power outlet.
- Please do not place the machine near heat or flammable dangerous goods.
- Do not insert your fingers or sticks into the air inlet or outlet.
- Always keep the machine on even surfaces, avoid placing the machine on uneven or sloping ground.
- Do not spray water, insecticides, or flammable liquids on the unit.
- This machine should not be placed in a confined and narrow space.
- If the power cord is damaged, it must be repaired by the manufacturer or replaced by a professional to avoid danger.
- When using the dry clothes function, the clothes should be kept at least 15.7inches away from the air outlet to prevent water from entering the machine and damaging the machine.
- The machine power wiring must be in accordance with national wiring rules, and the power line should be connected to the reliable external naught wire.
- The fixed wiring of the machine connection must be equipped with an all-pole disconnect device (air switch) with at least 0.118 inches contact opening distance.
- Model specification of safety tube:3.15A
- This dehumidifier is designed to operate with a working environment between 41 °F(5 °C) and 95 °F(35 °C) .
- When using the dehumidifier, other objects surrounding the machine at least need to keep a distance of 7.9inches (20cm). As the pictures show:
- This appliance is not intended for use by persons (including children) with reduced physical, sensory or mental capabilities, or lack of experience and knowledge unless they have been given supervision or instruction concerning the use of the appliance by a person responsible for their safety.
- Children should be supervised to ensure that they do not play with the appliance.

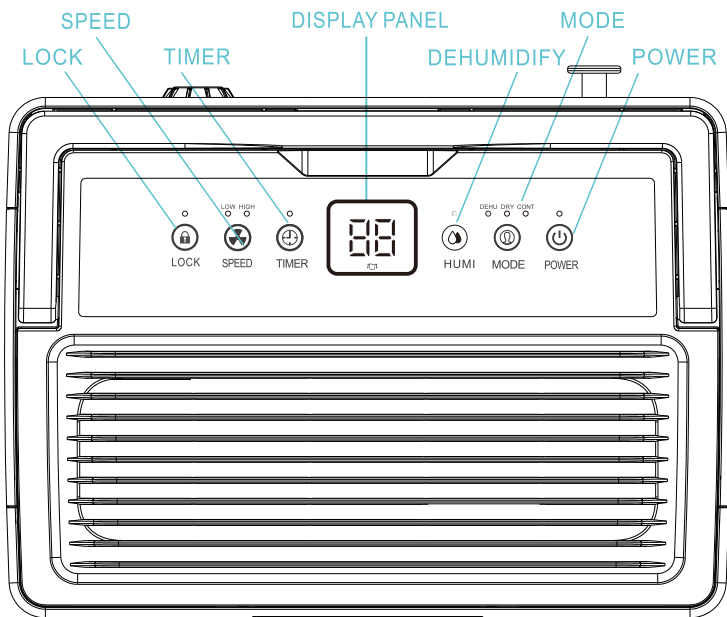


PRODUCT OVERVIEW



NOTE: Do not cover or block the air inlet or outlet.

Control Panel



OPERATION INSTRUCTION

1.Setting

💧 Mode Setting

There is Clothes-Dryer Mode, Dehumidify Mode, Continuous Dehumidify Mode.

After the machine is turned on, press the [Mode] button to switch the working modes. Each time pressing the button, the machine will cycle through the Clothes-Dryer mode, the Dehumidifying mode, and the Continuous Dehumidifying mode.

Notices:

In the Clothes-Dryer Mode: Both the humidity and fan speed are not settable.

In the Dehumidify Mode: Both the humidity and fan speed are settable.

In the Continuous Dehumidify Mode: The fan speed is settable, while the humidity is not settable.

💧 Humidity Setting

The humidity level can be set within the range of 30% RH to 80% RH in 5% increments.

-When the machine starts working, it will first automatically detect and show the room humidity. In the dehumidification mode (not settable under the other modes), press the "Dehumidify" button to change the humidity selection, each time in 5% increments. The number indicator "*****" will keep flashing and show the set humidity. Once you have settled the humidity you want, please stop operating and wait for 5 seconds, the number indicator "*****" will stop flashing and turn to show the actual room humidity instead.

-When the humidity level exceeds the set humidity, the dehumidifier will automatically stop working, while the humidity level falls below the set humidity, it will automatically start working again.

-When the humidity level is set at 30% RH, the dehumidifier will turn to work in the continuous dehumidifying mode.

💧 Time Setting

The time setting is used to set a time for the machine to automatically turn on or turn off.

1. When the machine is turned on, the time setting is used for auto turn-off; When the machine is turned off, the time setting is used for auto turn-on.
2. Press the "TIMER" button to select the timer, each time in 1-hour increments. You can set the timer up to 24 hours. It will start to do the countdown when the setting is finished.
3. You can press and hold the "TIMER" button for seconds to make the setting faster.
4. If the time is set at 00, this is called the invalid time which means the time setting is invalid. Once the time setting is succeeded, the light "o" will light up, and the led screen will keep showing the setting time for seconds, then turn back to show the current room humidity.

OPERATION INSTRUCTION

💧 LOOK

When the machine is turned on, press and hold the "LOCK" button for 2 seconds, the control panel will be locked together with the other function buttons. To unlock the control panel, press and hold the "LOCK" button again for 2 seconds.

💧 Speed Button

The speed button is used to control the fan's speed, it can be switched to the high-speed mode or low-speed mode. Notice: The high-speed mode will gain the moisture removal effect, while the low-speed mode will be much quieter, please choose your preferred speedmode accordingly.

💧 State Light Display

Standby state: Blue Light



Turned-on state: Green Light

Water-full State: Yellow Light

💧 Power Off Memory Function

1. Every time being turned on, the machine will automatically restore the working state before being powered off last time.
2. If a power interruption occurs when the machine is turned on, it will restore turned-on status after the power is recovered and keep the previous parameters settings.
3. If a power interruption occurs when the machine is turned off, it will stay turned-off status after the power is recovered..

💧 Overflow Protection

When the water in the water tank reaches full, the machine will turn off automatically. The indicator light  will start flashing, and the buzzer will alarm for seconds. After emptying the water from the water tank, the indicator light  will turn off, and the machine will start to work again.

OPERATION INSTRUCTION

Auto Defrost Function

When the machine is running at a lower temperature, the system will automatically determine whether there is a presence of frost. If the machine determines there is a presence of frost, it will start to defrost automatically.



Defrost Action

The fan will run at the high-speed mode while the compressor will stop working.

Defrost Status Display

In the defrosting status, the power button "o" will keep flashing.value.

2.Display Status Description

- After the machine is settled up an electric circuit, the "POWER" button will light on which means the machine is powered on and stays at the Standby (Power off) status.
- Timer indicator "o": If the timer is set up properly, the indicator will turn on, when the timer is not set up properly the indicator light will turn off.
- The lighting button indicator "o": When using the light function the indicator will turn on, and turn off if the function is not used.
- High-speed indicator "o^{HIGH}": If you set the machine to high-speed fan mode, the indicator will turn on.
- Low-speed indicator "o^{LOW}": If you set the machine to low-speed fan mode, the indicator will turn on.
- Clothes-Dryer indicator "o^{DRY}": When the Clothes-Dryer mode is selected, the indicator will turn on, otherwise it will be off.
- Dehumidify mode indicator "o^{DEHU}": When the machine starts to dehumidify, the indicator will turn on. When the room environment humidity reaches the set humidity, the indicator will start flashing. Otherwise, it will be off.
- Continuous dehumidification mode indicator "o^{CONT}": When the Continuous Dehumidification mode is selected, the indicator will turn on, otherwise it will be off.
- Water full light indicator "  ": When the water tank is full of water, the indicator will start flashing.
- When the machine is alarming, the display panel will appear alarm error. (The alarm error and humidity data will be flashing rotation.)
- When the machine is working properly, the data "  " on the display panel will be the humidity value.

OPERATION INSTRUCTION

3.Instruction for Clothes-Dryer Mode

The dehumidifier can be used for drying clothes in rainy weather.

Step 1.

Hang the washed clothes in a small space such as a cloakroom, bathroom, or storage room.

Notice: Keep the unit away from the water drip from the washed clothes.

Step 2.

Open the dehumidifier and set the humidity level at 30% RH. It is suggested to let the air outlet of the dehumidifier blow air to the clothes directly.

1. The drying effect will vary from the thickness of clothes, the number of clothes, and the size of the drying room. Theoretically, the effect will be better when clothes are few, thin and the room is small.
- 2.The drying process would take 3 - 8 hours, thus, setting the machine to the continuous drainage mode is more suggested when drying clothes.

OPERATION INSTRUCTION

4. Error&Protection Code

Fault phenomenon

The humidity always shows "25%RH" (there is a big difference from the actual humidity)

The humidity always shows "99%RH" (there is a big difference from the actual humidity)

Analysis of causes

The humidity sensor failure?

1. There is water on the surface of the humidity sensor?
2. The humidity sensor failure?

Processing Method

Set the humidity to 30%RH, if the dehumidifier can still continue to work, the machine can be used normally.

Repair and replace the humidity sensor.

If the dehumidifier is not affected and can continue to work, the machine can be used normally.

please let the dehumidifier keeps working for a period of time, after the water on the surface of the humidity sensor is removed, it will return to work normally.

Repair and replace the humidity sensor.

Notice:

When an error happened, there will be an error code flashes on the display. If there is more than one error, each error code will be displayed in turn, if there is only one error, the error code and the current humidity value will be displayed alternately.

OPERATION INSTRUCTION

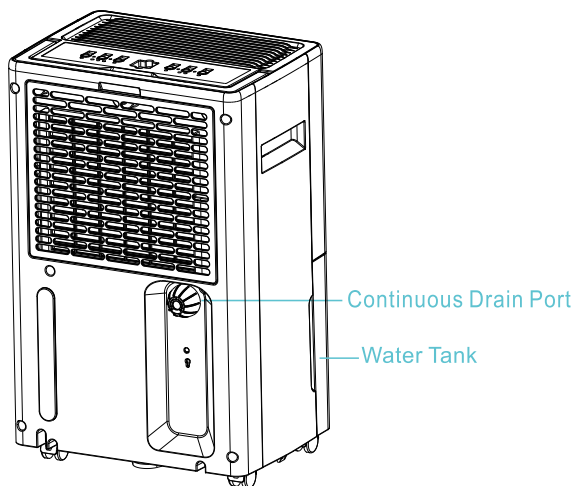
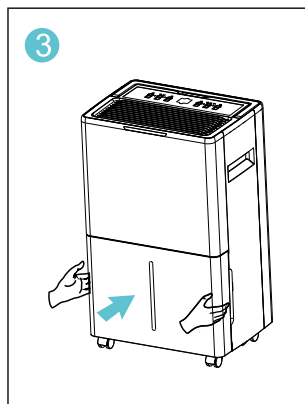
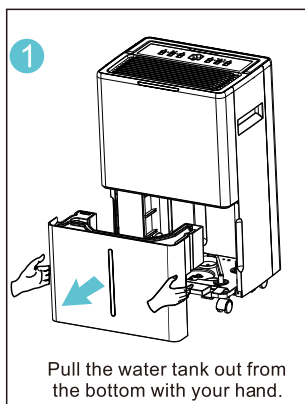
5. Empty the Water Tank

There are two ways to remove collected water.

Use the water tank

When the water tank is already full, the Full Tank Alert indicator light will turn on, the dehumidifier will automatically shut down until the tank has been emptied and placed back in the unit.

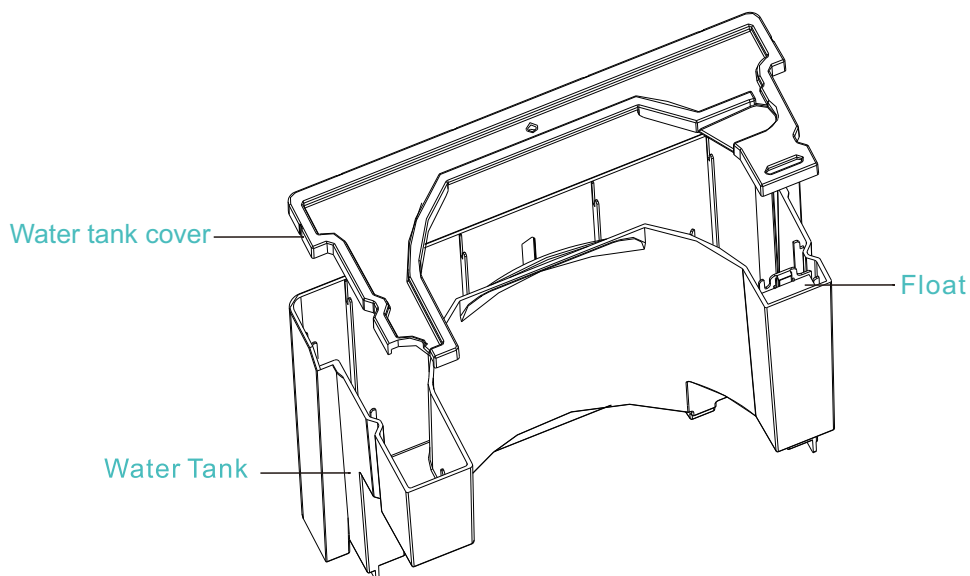
Ways to Empty the Water Tank



OPERATION INSTRUCTION

Notices:

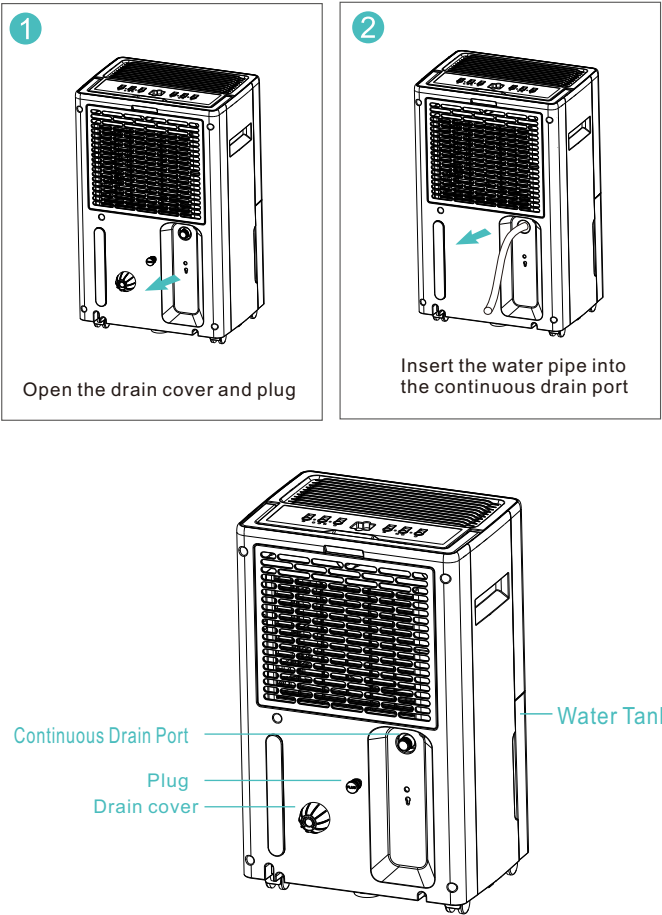
- Do not remove the float from the water tank. If the float in the water tank is removed, the sensor may not be able to determine the water level stored in the tank properly which may lead to a water overflow leak from the water tank.
- If the water tank is dirty, just use cold water or warm water to clean it. Do not use detergent, steel wool, chemically treated dust cloth, gasoline, benzene, thinner, or other solvents. Otherwise, it may damage the water tank and cause it to leak.
- When placing back the water tank, use your hands to press the tank back in its place. If the water tank is not placed properly, sensors or protections from water overflow may not operate as expected.



OPERATION INSTRUCTION

6. Continuous Drainage

Remove the power supply, take out the water tank, open the drain cover and plug, insert the water pipe into the continuous drain port and push it back into the water tank. Connect the power supply to start the operation. The water outlet of the water pipe should be lower than the continuous drainage port by more than 3.9 inches, and the water pipe cannot be bent. (Note: The continuous drain port diameter is 16mm(0.63inch))



CLEANING AND MAINTENANCE

⚠ WARNING:

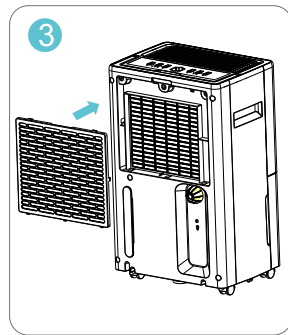
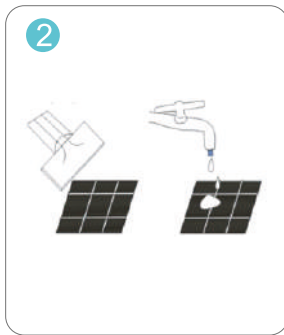
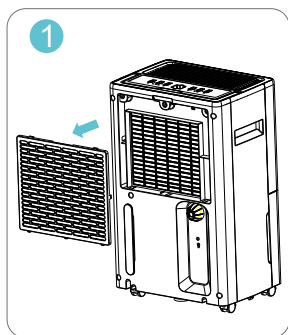
Turn the dehumidifier off and remove the plug from the power source before cleaning

A- Cleaning the dehumidifier body

Please use only a soft and a bit wet textile or cloth to clean it.

B- Cleaning filter

- ❶ Pull out the filter.
- ❷ Clean the filter: use a vacuum cleaner to gently remove the dust from the surface of the filter. if the filter is very dirty, wipe it with warm water and a mild detergent and dry it completely.
- ❸ Slowly insert the filter back into the fuselage.



C- Dehumidifier storage

When you want to store the dehumidifier because you don't use it for a long time. Please pay attention to the following steps:

1. Empty the water in the water tank.
2. Roll up the power cord and tie it up.
3. Clean the filter.
4. Place the machine in a cool and dry environment.

TROUBLESHOOTING

Check the information below for troubleshooting steps that will save your time to resolve issues that may happen with the unit. This list includes the most common issues. Listed below are not the result of a defective unit, crafts, or materials in the unit. If all troubleshooting steps have been exhausted and the issue is still occurring, please feel free to contact us.

Problem	Cause	Solution
The dehumidifier does not work	The power cord is unplugged.	Make sure that the unit's plug is inserted properly into the power outlet.
	Is the Tank Full indicator blinking? (The tank is full or in a wrong position.)	Empty the water in the water tank and then reposition the tank.
	Is the room temperature above 95°F (35°C) or below 41°F (5°C).	This product does not apply to over hot or cold environment, the machine will automatically protection, it is a normal phenomenon.
	Is the room temperature between 41°F(5°C) and 68°F(20°C) ?	When running under lower ambient temperature, the machine will automatically defrost, it is a normal phenomenon. Wait until the defrost process finish, it will restart dehumidifying again.
	The dehumidifier is in the defrosting process.	It is normal the compressor ceases while defrosting process. Wait until the defrost process finish, it will restart dehumidifying again.
	Does the room humidity is lower than or reach the preset humidity level? (The room humidity has reached the preset humidity level, the dehumidifier enters into standby mode and the LCD and indicators will start flashing.)	Please set the humidity 5% decrease by degrees than the room humidity or set the humidity to 30%

TROUBLESHOOTING

	There is prevent frequent start function in the machine. Dose the machine stop working just now?	Please wait for more than 3 minutes.
	Room humidity is low.	The dehumidifier is designed to work in the humidity rane of 30%-80%.Above or below the work humidity range, it will not work.
The dehumidifier does not dry the air as it should	The air filter is dirty.	Clean the air filter.
	Is the air inlet or air outlet obstructed?	Remove the obstruction from the air inlet or outlet.
	The dehumidifier size is too small for application.	Increase the quantity of dehumidifier. Or change a higher capacity dehumidifier.
	Poor air circulation.	Please leave about 7.9inch(20cm) around the porduct.
	Did not allow enough time to remove the moisture.	Allow enough time to remove the moisture. When first installed, allow at least 3-4 days to maintain the desired RH.
	The room has not been sealed properly.	Check that all doors, windows and other openings are securely closed.
	The air filter is clogged.	Wash the filter.
	Room temperature is too low, or below 41°F (5°C) (The machine will not work and or poor dehumidify efficiency in low tempreture).	Please wait the temperature rises above 5°C or higher.

TROUBLESHOOTING

The dehumidifier makes loud noise when operating	The dehumidifier is not positioned level.	Move the machine to a horizontal position.
	Is there blocking around the air inlet? The air filter is clogged.	Clean up the dirty form the on the air outlet and intake.
	Is the filter installed correctly?	Please check whethether the filter packaiaing bag removed and install correctly.
Dehumidifier operates continuously	Check if the dehumidifier is in CONTINOUS MODE.	Don't set the humidity too low. Typically, 40-50% are good settings to use.
	Room humidity is too high.	Change humidity settings. Or change a higher capacity dehumidifier.
	Doors and windows are open.	Ensure that all doors, windows and other openings are closed.
Overflow of water on floor	The water tank 's float been stunk.	Move the float and let it can be swang freely.
	The magnet on the float comes off.	Put the magnet in right position.
	Hose to connector or hose connection may be loose.	Connect the hose with the drain outlet tightly.
	The water tank has not been installed properly.	Re-install the water tank properly.
Humidity always shows "25%RH" (there is a big difference from the actual humidity)	Humidity sensor failure?	Set the humidity to 30% RH,the dehumidifier can still continue to work, and can be used normally.
		Repair and replace the humidity sensor.
Humidity always shows "99%RH" (there is a big difference from the actual humidity)	1.Water on the surface of humidity sensor? 2.Humidity sensor failure?	The dehumidifier is not affected and can continue towork,and can be used normally
		Please let the dehumidifier keeps working for a period of time, after the water on the surface of the humidity sensoris removed, it will return to normal
		Repair and replace the humidity sensor.

IMPORTANT SAFETY TIPS



1. When using, please do not put the machine on soft and uneven ground, avoid vibration and movement.



2. Do not insert thin rods and hard objects into the fuselage to avoid malfunction and danger.



3. When using, please keep the machine away from the heating furnace, electric kettle, and other heat sources.



4. When using, make sure doors and windows are closed to get the best humidity removal effect.



5. Please do not put objects around the body. If the ventilation is blocked, the dehumidification effect will be affected.



6. If do not use the product for a long time, please unplug the power cord.



7. When cleaning the humidifier fuselage, please use a wet cloth or textile to wipe the unit's surface gently, do not splash water on the unit directly.



8. Please do not put any object on the dehumidifier.



9. Please clean the filter every two weeks (do not use hot water above 104°F, gasoline toluene)



10. When on continuous drainage, make sure the drainage pipe is placed horizontally on the ground. Avoid the pipe to be on uneven surface or in an arch position.



11. After cleaning the filter, do not dry the unit under direct sunlight to avoid filter deformation.



12. Before moving and carrying the machine, please first pour out the water in the tank.

SPECIFICATIONS

DEHUMIDIFIER	
MODEL	AS-320
POWER SOURCE	120V ~ 60Hz
RATED POWER	350W
RATED CURRENT	3.2A
MOISTURE REMOVAL CAPACITY (65°F,60%RH)	15.10Pints/Day
MOISTURE REMOVAL(80°F,60%RH)	22 Pints/Day
MOISTURE REMOVAL(86°F,80%RH)	40 Pints/Day
MOISTURE REMOVAL(95°F,90%RH)	50 Pints/Day
INPUT POWER(65°F,60%RH)	187W
INPUT CURRENT(65°F,60%RH)	1.65A
IEF(65°F,60%RH)	1.57liters/k wh
MOTOR FLA	0.23A
MOTOR COMPRESSOR	RLA: 3.0A LRA:14.0A
REFRIGERANT	R134a/95g(3.35ozs)
MAXLMUM ALLOWABLE PRESSURE	4.5MPa
MAXLMUM OPERATING PRESSURE HIGH	1.6MPa
MAXLMUM OPERATING PRESSURE LOW	0.9MPa
WATER TANK CAPACITY	0.66 Gallon

The Company reserves the right to change the product, the above parameters are subject to change without notice.

PRODUCT WARRANTY INFORMATION

We offer a one-year warranty. If you have any questions or product issues during this period, please contact our official service team: **service@Aiusevo.co**

We will reply and answer your questions within 24 hours. Please don't worry we will always stand behind our products and provide you with the best service.

Please contact the seller if you want to return the product, all items can be returned within 30 days after delivery. You will receive a full refund back to the original payment method as long as the product and accessories are returned in their original packaging intact.

The logo for MIUSEVO is displayed in a bold, black, sans-serif typeface. The letters are closely spaced, and the overall design is clean and modern. The logo is centered horizontally in the upper portion of the page.

MIUSEVO