

# ARCTIC AIR®

Evaporative Air Cooler

## CHILL ZONE INSTRUCTIONS



# READ ENTIRE MANUAL BEFORE USE

## Congratulations!

Customer Service is our #1 Priority!

If you have any questions or problems, go to:

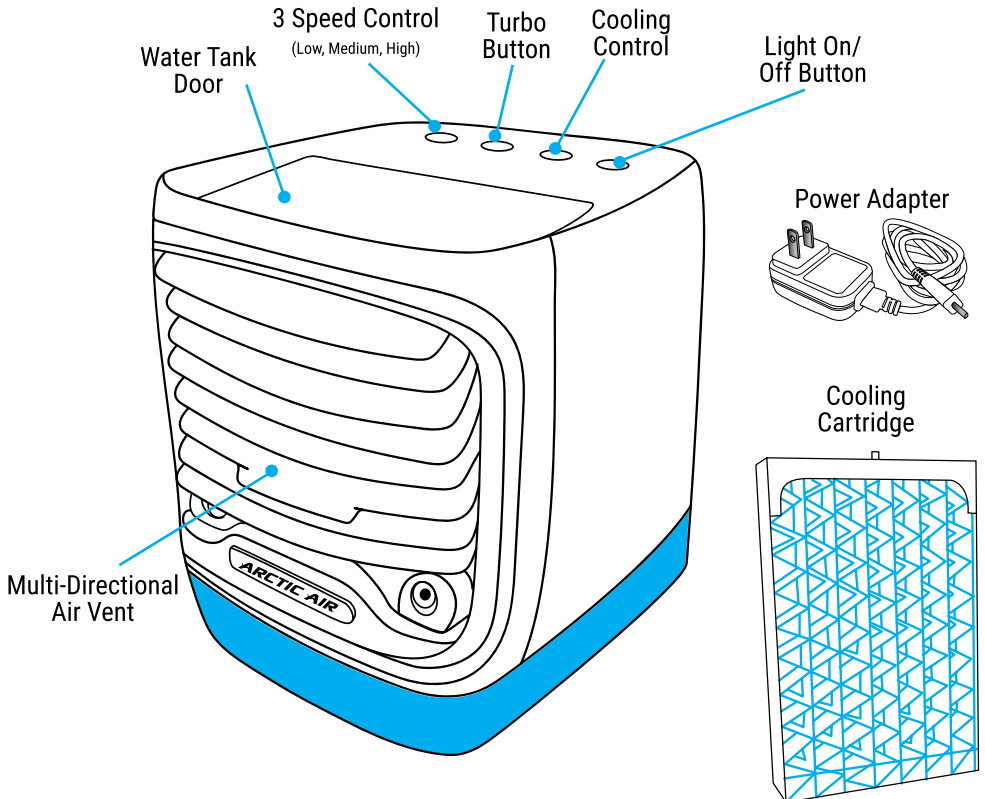
**[www.ChillZoneFAQ.com](http://www.ChillZoneFAQ.com)**

If you can't find the answer, call our customer service line

Monday-Friday 9am to 6pm EST:

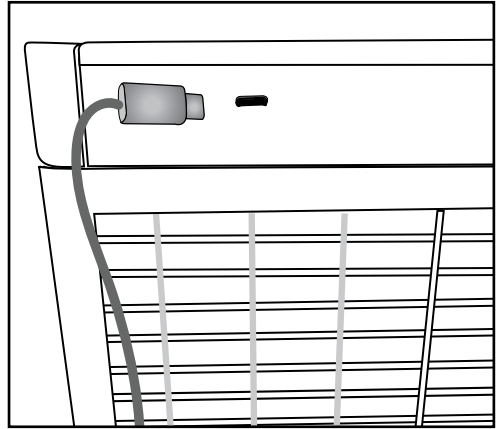
**1-877-258-5539**

## WHAT'S INCLUDED:

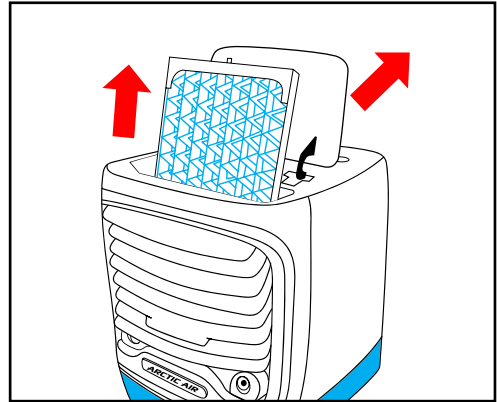


# SETUP:

1. Set Arctic Air® Chill Zone on a flat surface such as a table or desk. Attach Power Adapter to Power Adapter Port, and plug Power Adapter into wall outlet.

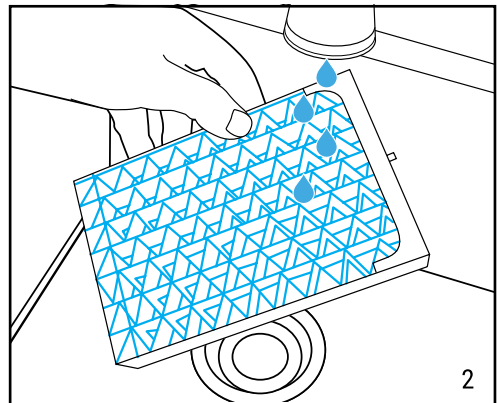


2. Open Water Tank door and slide Cartridge out of unit



3. Soak cooling cartridge under cold, running water and place back into the water tank.

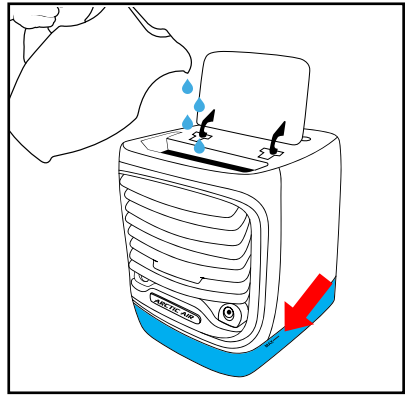
**FOR BEST RESULTS:** Place the wet cartridge in the freezer. Once frozen, place back in water tank.




## SETUP (CONT.):

4. With cooling cartridge in unit, fill the water tank by gently pouring water into the top until water level reaches the max fill line at the bottom. You can check by looking on the side of the tank.

**FOR BEST RESULTS:** Open Water Tank Door, and place ice cubes in tank prior to replacing filter and filling with water. This will provide an extra cold blast of air. Repeat when ice cubes melt.

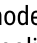



## USAGE:

1. Press the  button to turn Arctic Air® Chill Zone on - it will default to High speed mode.

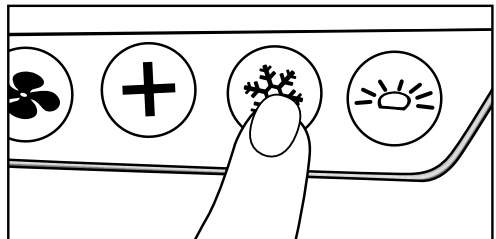
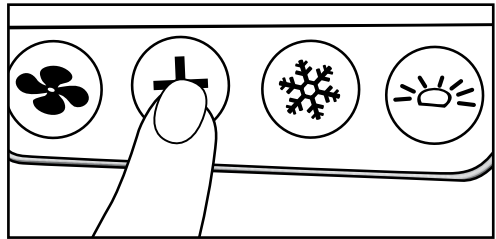
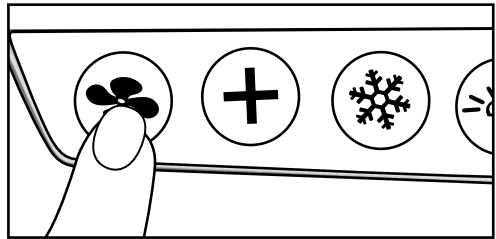
- 1<sup>st</sup> press: Power on, High
- 2<sup>nd</sup> press: Medium
- 3<sup>rd</sup> press: Low
- 4<sup>th</sup> press: Power off

**NOTE:** Arctic Air® Chill Zone will run up to 8 hours on High, 10 hours on Medium and 12 hours on Low.

2. Press  to start TURBO mode for maximum fan power and cooling.

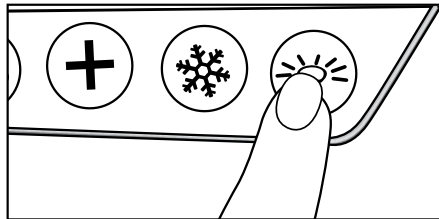
3. Control cooling output by pressing  button. You can choose HIGH cooling mode or LOW cooling mode.

**NOTE:** Arctic Air® Chill Zone will run up to 2.5 hours on High and 8 hours on Low.



## USAGE (CONT.):

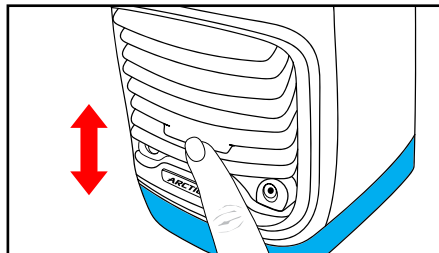
4. Choose your light color by pressing ☀️ button. You can choose between solid colors or a color-cycle mode. *Color order: Blue, Red, White, Teal, Purple, Yellow, Green, Color Cycle*



**NOTE:** To adjust brightness, hold ☀️ for 3 seconds. Light will begin to get brighter and dimmer. When at your desired level, press ☀️ again to lock in choice.

5. Use the Air Direction Tab on the vent to adjust airflow up/down to your preference.

**PLEASE NOTE:** You may notice some condensation forming on the front grill. This is normal.



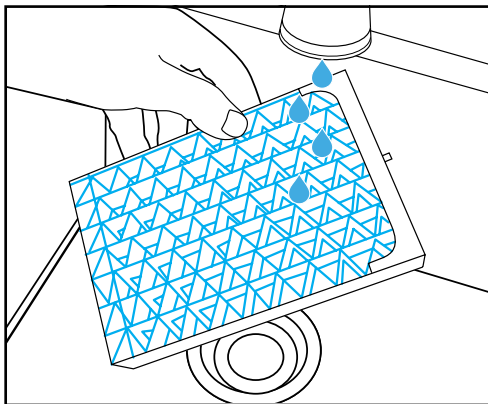
**IMPORTANT:** If you do not plan to use Arctic Air® Chill Zone for an extended period of time, it is recommended that you empty and let unit & cartridge dry before storing. This will avoid mold and unpleasant smells, and prolong life of Arctic Air® Chill Zone and the cartridge.

## MAINTENANCE:

We recommend weekly cleaning of your Arctic Air® Chill Zone and Cartridge to keep in best working condition, and replacing the Cartridge every 3-6 months.

**HAND WASH:** Hand wash gently with warm water & soap. Shake out excess water & let air dry.

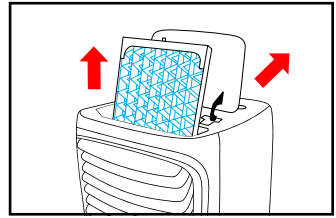
**IMPORTANT:** If you see mold on the cartridge or notice a musty smell, stop and clean the cartridge before further use. Fully submerge the cartridge in a pot or bowl filled with equal parts clean water and white vinegar – allow to soak for 45-60 minutes. Rinse with warm water, wring out and let air dry.



# MAINTENANCE:

## UNIT CLEANING

- To prepare for cleaning, run Arctic Air® Chill Zone until all water has emptied from the water tank, or hold Arctic Air® Chill Zone over a sink and carefully pour out to avoid splashing or spilling.
- Remove cartridge from Arctic Air® Chill Zone. Using warm, soapy water, wipe water tank and grill, then rinse off cartridge. Wipe off soap and let air dry.
- If you notice water tank is dirty, use a small, bendable brush (i.e. toothbrush, bottle brush, etc) and carefully clean the inside of the tank until clean. Rinse clean with warm water.



## To Order A New Cartridge or Contact Customer Service:



Web: [www.ChillZoneFAQ.com](http://www.ChillZoneFAQ.com)



Call: 1-877-258-5539



Email: [AACHillZone@rephelpdesk.com](mailto:AACHillZone@rephelpdesk.com)

# WARNINGS:

- Do not carry Arctic Air® Chill Zone when filled with water. Some water may remain in unit even if tank is empty.
- Use only clean water. If needed, use distilled water.
- Please read and follow regular maintenance as recommended in “Maintenance” section of this guide.
- Arctic Air® Chill Zone works best in non-polluted areas. Large dust/dirt particles may reduce lifetime of unit.
- We recommend use only in dry locations. If using in a moist area or environment, take care not to get water on external areas of the product.
- If a leak or spill occurs on the surface of device, unplug Arctic Air® Chill Zone and let it dry for 24 hours. Then, use as normal.
- Do not place in direct sunlight for extended periods of time.

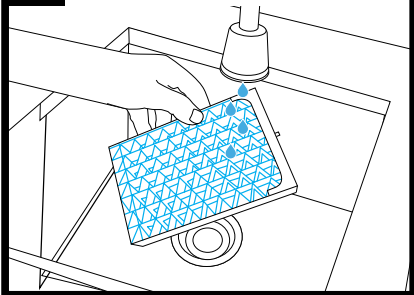
## WARNINGS:

- Before not using Arctic Air® Chill Zone for extended periods of time, empty the water tank, turn unit on, and set to highest fan speed for at least 4 hours. This will dry out then cartridge and inside of your unit.
- Only use the original power adapter and cord supplied in package.
- Do not touch the power supply or power cord with wet hands.
- Unplug Arctic Air® Chill Zone when cleaning, removing/replacing cartridge, or moving the device.
- For best results, place Arctic Air® Chill Zone on a higher surface like a table or countertop.
- Do not place Arctic Air® Chill Zone near a heater or any electrical equipment.
- Do not place the device in passageways or high traffic areas where there is a possibility of tripping or knocking it over.
- Do not allow any foreign objects inside Arctic Air® Chill Zone.
- Do not place items on top Arctic Air® Chill Zone.
- Do not block the front and back grills of the device.
- Do not turn the device upside down.
- Do not submerge the Arctic Air® Chill Zone under water or other liquids.
- Do not place Arctic Air® Chill Zone near open flames or fire sources.
- People with limited physical, visual or mental abilities or lacking proper experience and/or knowledge should never use the device without supervision of those responsible for their safety or those capable of assistance in using the device.
- The device can be switched off completely only when disconnected from the power supply.
- The manufacturer does not bear any responsibility for any damage from failure to comply with this product guide.
- A replaceable water cartridge is designed specifically for this product. If your cartridge has been broken or damaged, you can purchase a replacement.

ONTEL® ASSUMES NO RESPONSIBILITY FOR ANY INCIDENTAL OR CONSEQUENTIAL DAMAGES ARISING OUT OF YOUR USE OF THE PRODUCT. IN PURCHASING AND USING THIS PRODUCT, YOU ASSUME ALL RESPONSIBILITY FOR CLEANING THE PRODUCT AND MONITORING THE PRODUCT FOR MOLD. ADDITIONALLY, ONTEL® SPECIFICALLY DISCLAIMS ALL EXPRESSED WARRANTIES NOT OTHERWISE SET FORTH HEREIN AND ANY IMPLIED WARRANTIES OF MERCHANTABILITY OR FITNESS FOR A PARTICULAR PURPOSE. THERE ARE NO WARRANTIES WHICH EXTEND BEYOND THE DESCRIPTION OF THE FACE HEREOF.

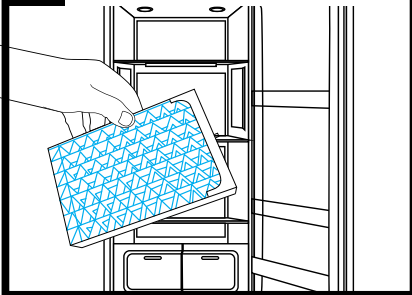
# FOR BEST RESULTS:

## 1. SOAK CARTRIDGE



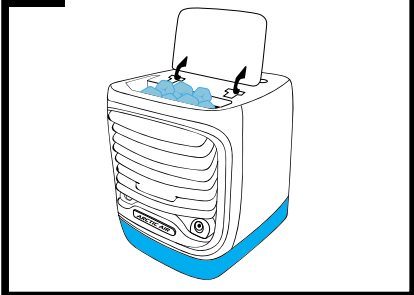
To **ACTIVATE COOLING**, soak your cooling cartridge in cold water.

## 2. PLACE IN FREEZER



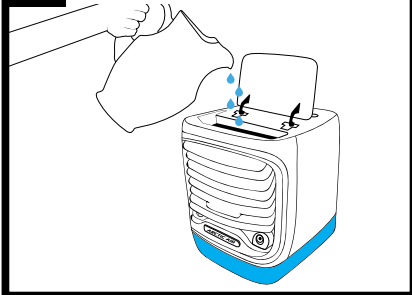
For **MAXIMUM COOLING**, place wet cooling cartridge in the freezer until frozen.

## 3. ADD ICE CUBES



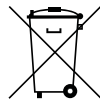
Add ice cubes to tank for extra cooling power.

## 4. FILL WITH PITCHER



Place on a flat surface, place cartridge in unit and fill tank from a water pitcher.

## FOR HOUSEHOLD USE ONLY



Distributed by  
**Ontel**  
PRODUCTS CORPORATION

©2022 Ontel Products Corp.  
Fairfield, NJ 07004  
All Rights Reserved.

Made In China  
U.S. Pat. No. 10,712,029  
AACZ-IM-01-1022-400

Model Number: **18009**  
**AC100~120V**  
**DC 5V, 1.5-2.0A**  
**1217.0101**