



## ASTROAI SNOW BRUSH MANUAL

Thank you for purchasing the Snow Brush from AstroAI. For optimal performance and safety, please read and follow all of the instructions below before use. Please keep this manual for future reference. We hope you enjoy your new Snow Brush! If you experience the need for any kind of help or support from our Customer Service team, you are welcome to contact us with your question via [support@astroai.com](mailto:support@astroai.com). Thanks again!

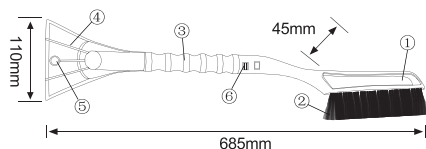
### WARNING //

- Please read the instructions carefully before use. Please keep this item in a dry place and free from sunlight.
- Please keep this item away from fire, corrosive liquid and strong acid. Please do not pull brush hair to prevent it from falling off.
- Please do not use this product outside of its intended use.

Accidents may happen through the shipping process, please contact our support team if you come across the following issues:

1. Connection breaks, unable to get the brush and scraper assembled;
2. Unable to connect pieces together or if there is a loose fit;
3. Brush hair falls off/ handle breaks off.

### DIAGRAM //



- ① Snow Brush
- ② Snow Brush Hair
- ③ Handle
- ④ Snow Scraper
- ⑤ Hook Hole
- ⑥ Press Button

### PRODUCT FEATURES //

#### Snow Brush:

Made of brand new high-strength ABS plastics and PVC filament;

#### Snow Scraper:

Made of brand new high-strength ABS plastic. Hard widening scraper and low temperature resistant material provide more convenience and practicality to scrape and sweep snow;

#### Handle Design:

Made of EVA cotton. Soft, elastic and anti-cracking material gives more comfort to hold;

#### Snow Brush Hair:

Made of PVC materials to prevent deformation, will not freeze or harden under  $-40^{\circ}\text{C}$ ; will not cause any damage to glass or vehicle body panels;

#### Separating Design:

When the brush and scraper are disassembled, they can function independently;

The joint buckle is made of integrated high strength plastics, allowing more than ten thousand presses;

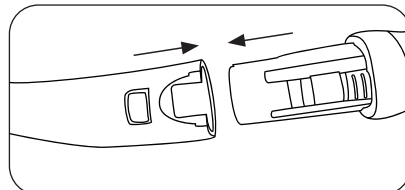
Not only available for cars, electro-cars, motorcycles, and bicycles, also can be used to clear snow from houses, doors and windows;

The item can be disassembled and stored in the carrying case after the job is done.

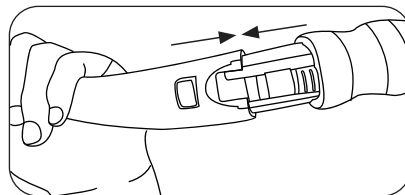
### ASSEMBLE & DISASSEMBLE STEPS //

#### ASSEMBLE

1. Align the scraper and brush together so the buckle aligns

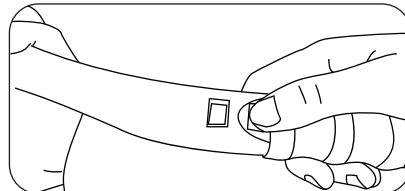


2. Gently push the two pieces together until they lock in place

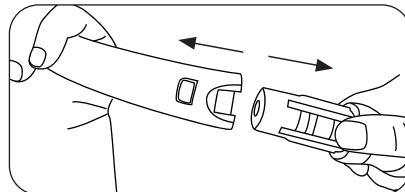


#### DISASSEMBLE

1. Push the brush buckle with your thumb



2. Pull the scraper away



### TROUBLESHOOTING //

Buckle does not connect	Make sure the scraper buckle connected tightly with the brush
Frozen Brush Hair	Make sure to use this item in a dry and cool place and avoid any liquid
Brush Hair Deformation	Make sure not to put too much weight on this item

1 Year Warranty Limited Warranty From AstroAI

Each AstroAI Snow Brush will be free from defects in material and workmanship. This warranty does not cover damage from neglect, misuse, contamination, alteration, accident, or abnormal conditions of operation or handling. This warranty covers the original purchaser only and is not transferable.

Questions or Concerns? We're happy to help!

AstroAI always wants to provide our customers with excellent products as well as customer service. Get to know us more at [astroai.com](http://astroai.com).