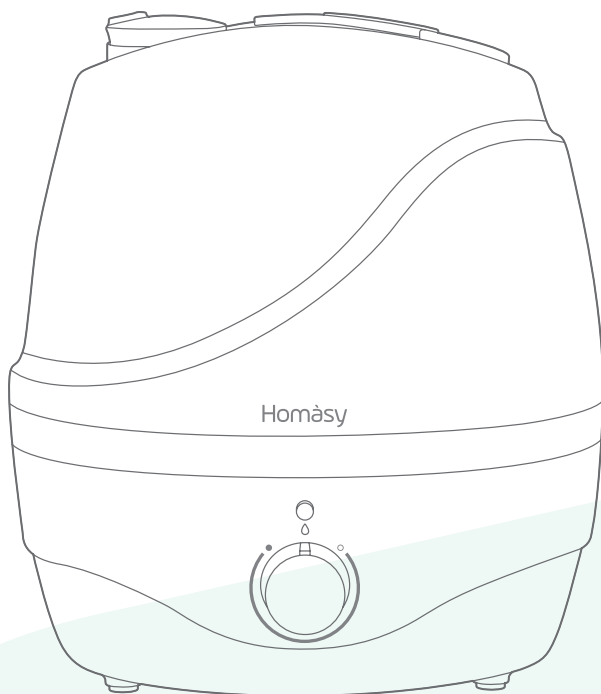


Homasy

ULTRASONIC COOL MIST HUMIDIFIER

User Manual



Model: HM589A

Need any help?

Please contact us and we will solve your problems within 24 hours.

Tech Support: support@homasy.com Number: (001) 518 660 1284 (US)

V1.0

Thank you for purchasing the

**ULTRASONIC COOL
MIST HUMIDIFIER
BY Homasy**

If you have any questions or concerns, please reach out to us at support@homasy.com
We hope you enjoy your new humidifier.

Thanks to its micron mist and simple operation, Homasy humidifier will deeply moisten your skin and increase the humidity in your room to a proper level with ease. You can enjoy each wonderful moment with this excellent humidifier.

CONTENTS

STATEMENT	01
SAFETY INSTRUCTIONS	01
BEFORE USING THE HUMIDIFIER	02-03
WHEN USING THE HUMIDIFIER	03-04
AFTER USING THE HUMIDIFIER	05
PACKAGE CONTENTS	06
SPECIFICATIONS	06
PRODUCT DIAGRAM	07
OPERATIONS AND FUNCTIONS	08-10
CLEANING AND MAINTENANCE	10-12
TROUBLESHOOTING GUIDE	13-15
WARRANTY	16
Homasy CUSTOMER CARE	16

STATEMENT

Thank you for purchasing a Homasy product that has been tested to meet our stringent quality standards. This product is covered with Homasy product and labor warranty for **12** months from the date of its original purchase

Please email us with your order ID and problem or issue via **support@homasy.com**, we will respond within 24 hours.

Please read the User Manual thoroughly. Clean and maintain the product as instructed. If any abnormalities occur, please refer to the Troubleshooting Guide first.

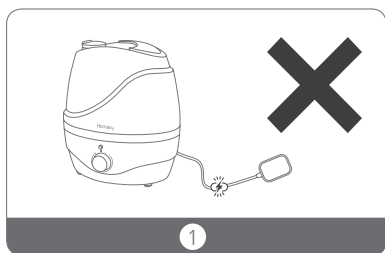
This warranty is void if the defect is caused by accidental damage, misuse, abuse, neglect, improper repair or alteration by unauthorized persons, or a failure to follow operating instructions provided with the product including adding essential oils directly into the tank and base. This warranty does not apply to normal wear and tear or commercial use.

In no event shall liability exceed the purchase price paid by the purchaser of the product. Under no circumstances shall there be liability for any loss -direct, indirect or incidental -or consequential damage arising out of, or in connection with the use of the product.

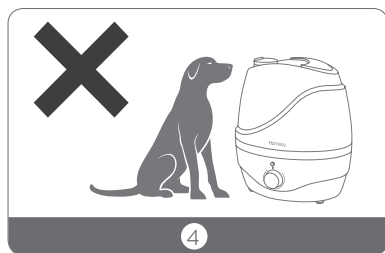
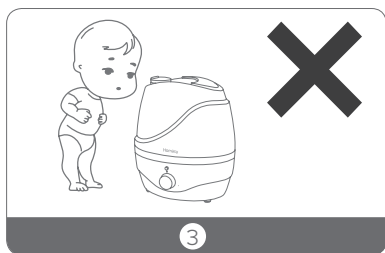
SAFETY INSTRUCTIONS

The humidifier was made with safe and environmental protection materials, it has been certified and complied with the requirement of sale regions related regulations or laws. IMPORTANT: Please read and save this SAFETY INSTRUCTIONS before using the device. Basic precautions should always be followed to reduce the risk of fire, electrical shock, and injury to persons or damage to the product.

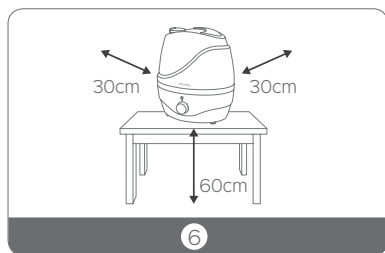
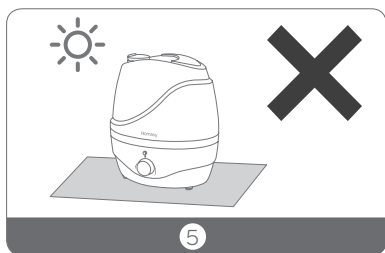
BEFORE USING THE HUMIDIFIER



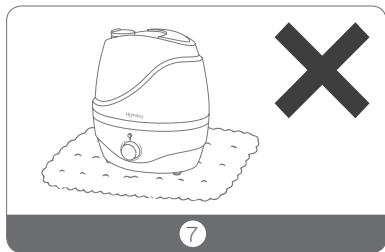
1. Please extend the cord and check any signs of damage. Do not use the humidifier if the cord has been damaged.
2. DO NOT place this humidifier in wet environments.



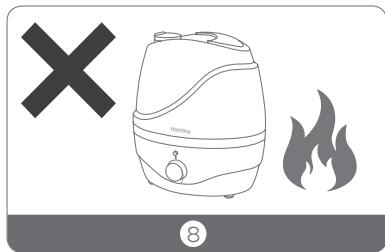
3. Please always keep the humidifier out of reach of patients & children & pet.



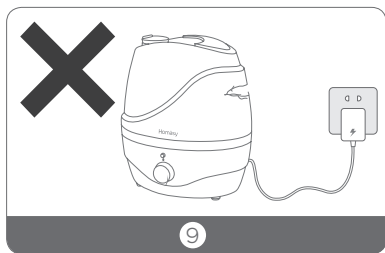
5. Please always place the unit on a smooth, flat, lint-free, non-metallic, waterproof and level surface and keep it away from direct sunlight.
6. Always place the unit 2 feet (60 cm) above the floor, 12 inches (30 cm) away from the wall, other appliances or wooden furniture.



7. DO NOT place the unit on carpet, towel or wood surface, which will block the vent and may damage the unit.

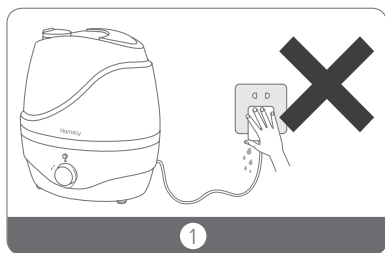


8. DO NOT place the humidifier near naked flames and heat sources, such as stove tops, ovens, radiators or computers.

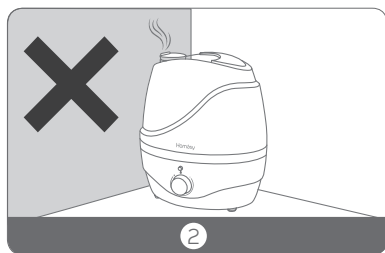


9. DO NOT use if the water tank becomes damaged or cracked.

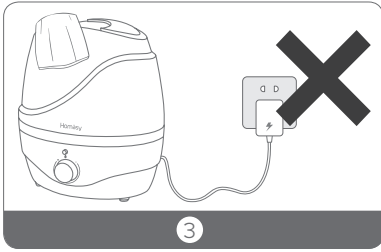
WHEN USING THE HUMIDIFIER



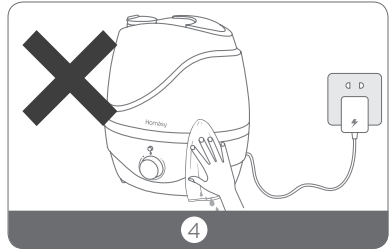
1. DO NOT plug the unit with wet hands.



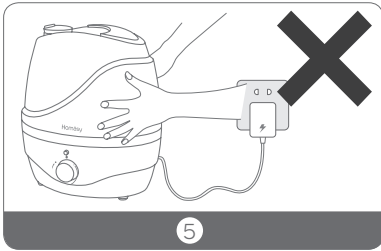
2. DO NOT direct the mist nozzle against the wall.



3. DO NOT use your hand or any other object to cover the nozzle while the unit is on to avoid damaging the product or causing injury.



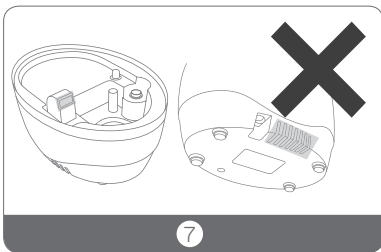
4. DO NOT clean the unit while it is connected to a power source or while it is on.



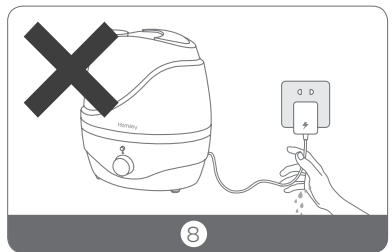
5. DO NOT move or tilt the humidifier while it is in operation.



6. The most comfortable environmental humidity is between 40%-60%. Please adjust the mist as needed.

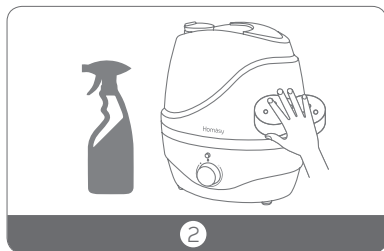
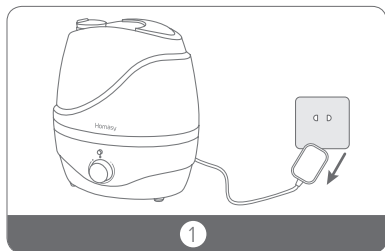


7. DO NOT block air inlet or air outlet.

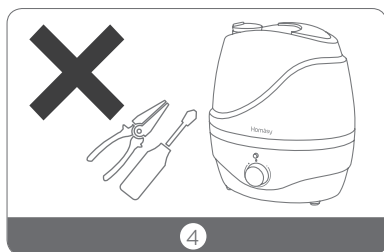
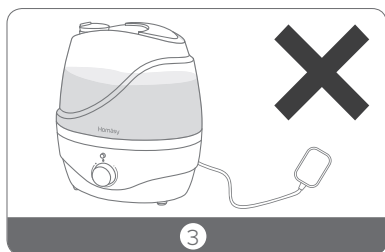


8. The humidifier should always be shut off and unplugged with dry hands before moving or while being cleaned. Never pull by cord.

AFTER USING THE HUMIDIFIER



1. Always disconnect from a power source by pulling the plug when not in use.
2. Humidifier requires regular cleaning. Please refer to, and follow the Cleaning and Maintenance instructions.



3. DO NOT keep water in tank when not in use for an extended period of time and / or when no one is home.
4. DO NOT attempt to repair or adjust any electrical or mechanical functions on this humidifier.
Doing so will void your warranty.

PACKAGE CONTENTS



1 x Homasy Humidifier



1 x Adapter



1 x Cleaning Brush



1 x Thank You Card

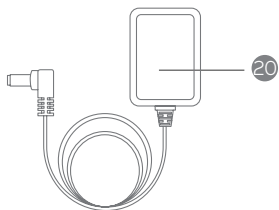
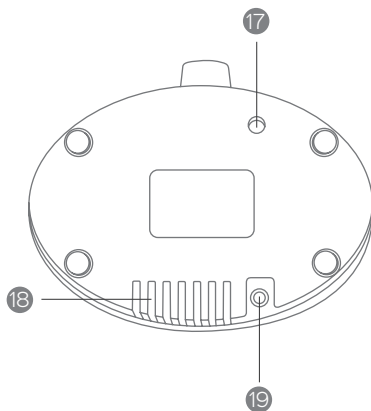
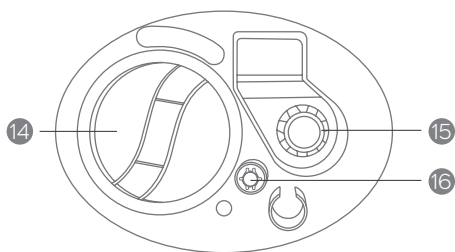
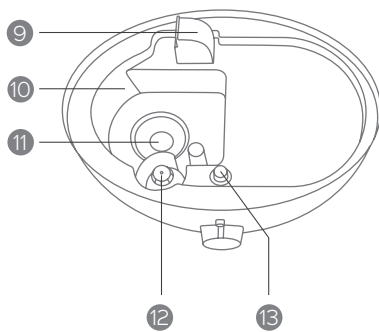
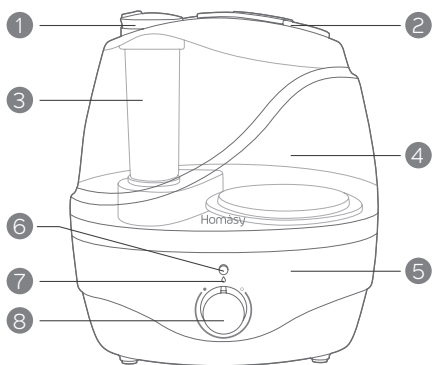


1 x User Manual

SPECIFICATIONS

Adapter Input	AC100-240V~ 50 / 60Hz
Humidifier Input	24V --- 1A
Power	24W
Capacity	0.58Gal / 2.2L
MAX Run Time (In lowest Mist Level on a Full Tank)	Up to 24 hours Note: The humidifier may run for a longer or shorter time depending on environmental temperature and humidity.
Effective Range	100-300ft ² / 10-28
Dimensions	9.33 × 8.54 × 6.41 (inch) / 237.5 × 217 × 163 (mm)

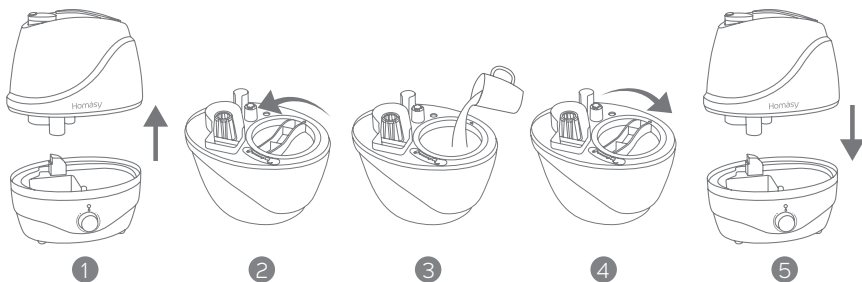
RODUCT DIAGRAM



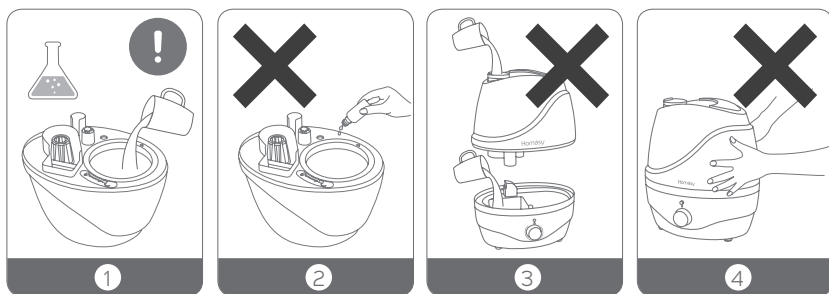
- | | |
|---------------------|-----------------------|
| 1. Mist Nozzle | 11. Atomizer |
| 2. Handle | 12. Floater |
| 3. Mist Tube | 13. Night Light |
| 4. Water Tank | 14. Water Tank Cap |
| 5. Base | 15. Noise Silencer |
| 6. Light Button | 16. Valve |
| 7. LED Indicator | 17. Drain Hole |
| 8. Control Knob | 18. Air Intake |
| 9. Air Outlet | 19. DC 24V Input Port |
| 10. Water Reservoir | 20. Power Adapter |

OPERATIONS AND FUNCTIONS

Add water



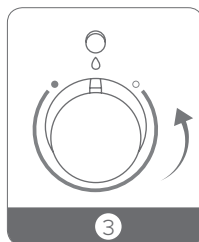
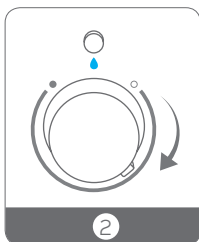
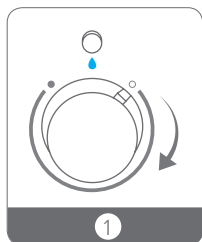
1. Turn the water tank upside down. Remove the tank cap and fill the tank with clean and cool water only.
2. Attach the tank cap and place the tank back onto the base. Please make sure it fits together securely so that water can go from the tank to the reservoir.



1. If tap water is too hard, it is recommended to use filtered or distilled water to avoid white dust. **DO NOT** use hot water.
2. **DO NOT** add any essential oils or medicinal tablets into the water tank.
3. **DO NOT** add water into the base or through nozzle.
4. **DO NOT** move the humidifier while the water tank is full of water to avoid leakage or base overflowing.

Power On / Off and Mist Adjustment

Connect the power adapter to humidifier input port and plug the adapter into a wall socket. Now the humidifier is ready for use.

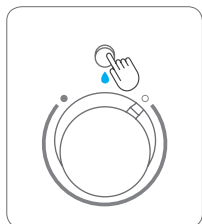


1. Rotate the control knob clockwise to turn on the product. The blue LED indicator will light up, indicating the humidifier has been turned on.
2. Keep rotating the control knob clockwise to increase the mist level. Rotate the control knob counterclockwise to decrease the mist level.
3. To turn off the humidifier, rotate the control knob counterclockwise until you hear a click. The LED indicator will turn off. The fan will work for another 15s to dry the mist tube.

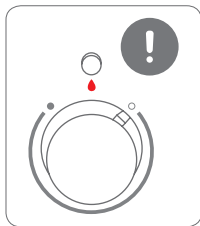
The most comfortable environmental humidity is between 40%-60%. Please adjust the mist as needed.

Light control

Press the Light Button to turn on / off the night light .

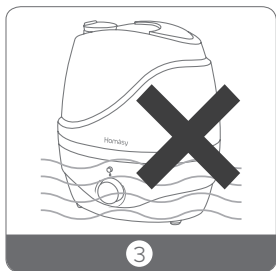


Low Water Protection: Auto Shut-off the Humidifier



When there is not enough water inside the water reservoir, the humidifier will stop misting and the LED indicator will become red. It is designed for safety to prevent the humidifier from possibly overheating and damaging the atomizer.

CLEANING AND MAINTENANCE



Caution

1. DO NOT submerge the base in water.
2. Make sure water does not enter the base through the air outlet, air inlet, or the control knob.
3. DO NOT wash any part of this humidifier in dish washer which will damage the humidifier and void the warranty.

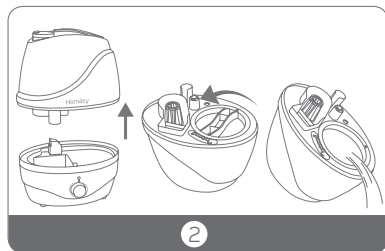
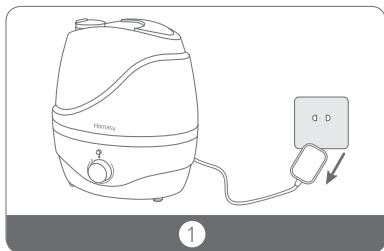
Daily Maintenance

Turn off the humidifier, unplug it from the power source Drain water from the tank, reservoir and base.

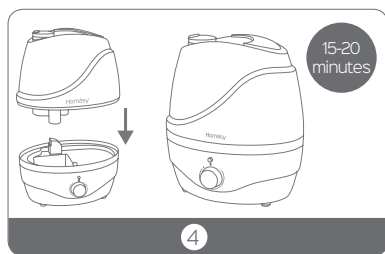
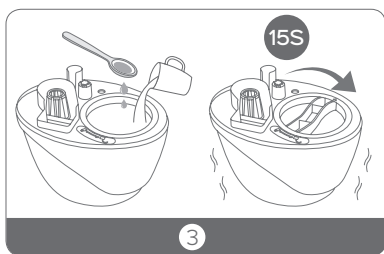
Weekly Maintenance

1. To properly clean your humidifier, we recommend you removing scale and disinfect the humidifier separately.
2. DO NOT mix vinegar and bleach solutions together. Do not use more than 1 tsp. of bleach per gallon of water to avoid damaging your humidifier.
3. Please make sure the sealing ring on the tank cap is installed properly after cleaning to avoid water leakage.
4. DO NOT scrub or scrape the atomizer, please always wipe clean it with a soft cloth.

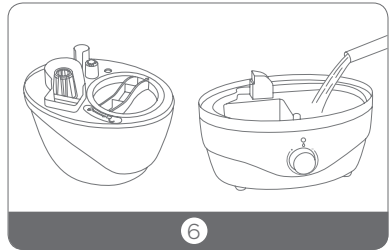
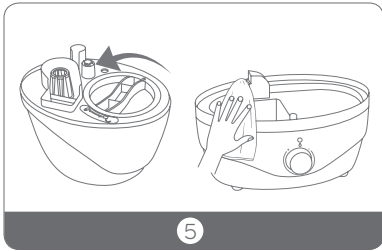
Scale Removal Instructions



1. Turn off and unplug the humidifier.
2. Remove the water tank from the base. Remove the tank cap. Make sure that the sealing ring does not come off. Drain water from the water tank and base. Remove any accessories and set them aside.



3. Fill the water tank half full. Add in 1 teaspoon of undiluted distilled white vinegar. Attach the tank cap and shake for 15 seconds.
4. Place the tank onto the base. The vinegar solution will enter the water reservoir to loosen mineral buildup (scale) on the atomizer, water floater and the bottom of the water tank. Set still for 15-20 minutes.



5. Uncap the tank cap and drain the solution. Wipe the atomizer and floater with a soft cloth to remove loosened mineral deposits.
6. Rinse both the water reservoir and water tank until the smell of vinegar (for scale removal) or bleach solution (for disinfecting, see below) is gone.

Disinfecting Instructions

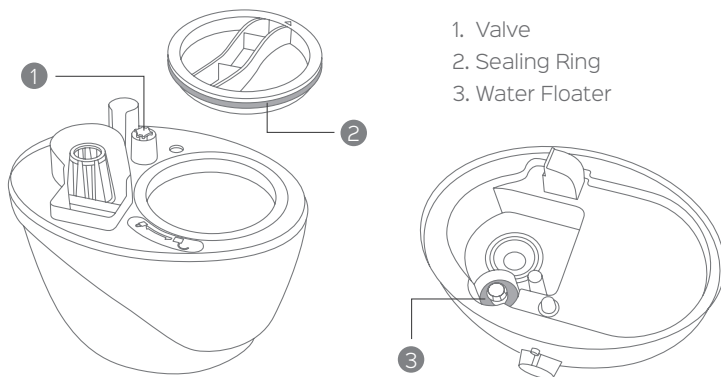
1. Follow steps 1-2 of the previous section on scale removal
2. Fill the water tank half full. Add in 1 tsp of bleach. Place the tank cap back on. Swish the solution around in tank. Place the tank on the base. The bleach solution will enter and disinfect the water reservoir as well as the other components Set still for 15-20 minutes
3. Follow steps 4-6 of the previous section on scale removal to complete disinfecting the humidifier.

End-of-Season Care and Storage

1. Follow the cleaning instructions when the humidifier will not be used for at least one week or at the end of the season. Remove any accessories used with the humidifier and allow the humidifier and accessories to dry completely before storing.
2. DO NOT store with water inside the base, water reservoir, or tank.
3. Pack the unit safely and store in a cool, dry location.

TROUBLESHOOTING GUIDE

1. If the information listed in the troubleshooting guide can't solve your problem, please email us for help.
2. Failure to keep this unit clean from mineral deposits may affect operation of this unit.
3. Customer failure to follow these instructions may void the warranty.



Problem	Possible Cause	Solution
LED Indicator is off	Power adapter not plugged in	Ensure the power adapter is properly plugged in
	No power from power outlet	Try another power outlet
	Power adapter not connect to the input port	Connect power adapter to the input port
LED indicator stays red	No water in the water reservoir	Ensure there is enough water in the water tank. Ensure the ① Valve is secured properly to the tank bottom allowing water to pass through to the base.
	③ Water floater stuck	Adjust the ③ water floater to a horizontal position and make sure it can rise up with water

The LED Indicator is blue but no mist is produced	Not enough water inside the tank	Refill and install the water tank
	Mist level is set too low	Adjust to maximum mist
	Mineral buildup on the atomizer	Feel if any air comes out from the nozzle. If yes, then clean water scale on the atomizer as instructed
	The base might be overfilled	Remove the tank, empty the base and place the filled tank on the empty base
Tank leakage	Tank may be damaged	Check for possible cracks in the tank, replace if necessary
	Tank cap is not tightened securely	Tighten the tank cap
	① Valve stuck	Ensure the ① valve is properly secured to the tank bottom allowing water to pass through the base
	② Sealing ring was not installed on the tank cap	Install the ② sealing ring on the tank cap, please contact us if it is missing
Mist height is low, damping surrounding desk or floor. Condensation forms around humidifier or on windows and walls	Mist level is set too high for the room size	1. Check if the room is too humid and adjust to lower mist. 40%~60% works best 2. Open door and windows, or change to a larger room
	Air inlet is blocked	Humidifier should be placed on a hard flat surface, 2 feet above the floor, 12 inches away from the wall. Point nozzle away from wall or window
	Low indoor temperature leads to liquefaction	Raise the room temperature to 25°C / 77 °F

Poor humidification	Mist level is set too low for the room size	<ol style="list-style-type: none"> 1. Adjust to maximum mist 2. Close door or windows to reduce air ventilation, or change to a smaller room
	Air inlet is blocked	Humidifier should be placed on a hard flat surface, 2 feet above the floor, 12 inches away from the wall
	Low indoor temperature leads to liquefaction	Raise the room temperature to 25°C / 77 °F
White dust appears or the black coating on the base flakes off	Tap water may contain too much minerals	Replace with filtered or distilled water
Mold grows inside the humidifier	/	Clean the water tank and water reservoir regularly
Strange Odor	Clean the unit	<ol style="list-style-type: none"> 1. Clean the humidifier as instructed 2. Leave the empty and opened water tank in a cool place for 12 hours without the tank cap attached
Strange water noise	Water is going down to the water reservoir	This is normal while it is working
	Water is dropping to the water reservoir	Run the humidifier on a lower mist setting
Loud or unusual noise	The humidifier may be malfunctioning.	Stop using the humidifier and contact Customer Support.
Humidifier is getting too hot	Unit works for too long	Power off and place in a well-ventilated place for 10 minutes

If your problem is not listed, please contact Customer Support (See page 16).

WARRANTY

This product is covered with Homasy product and labor warranty for 12 months from the date of its original purchase. You will be given a warranty extension of 18 months if the product is registered on our website (www.homasy.com).

If any problems occur, please contact Homasy support (support@homasy.com) immediately to launch a warranty claim. Specify model number and your Amazon order number. Our Consumer Service Representative will respond within 24 hours, advise you how to correct the problem yourself, or instruct you on how to return the defective unit back to us for repair or replacement.

We can only provide after sales service for products that are sold by Homasy or Homasy authorized retailers and distributors. If you have purchased your unit from a different place, please contact your seller for return and warranty issues.

CONTACT / HOMASY CUSTOMER CARE

**PLEASE CONTACT US BEFORE RETURNING THIS PRODUCT TO THE STORE.
EMAIL HOMASY CUSTOMER CARE FOR PROBLEMS AND QUESTIONS.
WE WILL RESPOND WITHIN 1 BUSINESS DAY.**

Tech Support: support@homasy.com

FCC Statement

Any Changes or modifications not expressly approved by the party responsible for compliance could void the user's authority to operate the equipment.

This device complies with part 15 of the FCC Rules. Operation is subject to the following two conditions: (1) This device may not cause harmful interference, and (2) this device must accept any interference received, including interference that may cause undesired operation.

Note: This equipment has been tested and found to comply with the limits for a Class B digital device, pursuant to part 15 of the FCC Rules. These limits are designed to provide reasonable protection against harmful interference in a residential installation. This equipment generates uses and can radiate radio frequency energy and, if not installed and used in accordance with the instructions, may cause harmful interference to radio communications. However, there is no guarantee that interference will not occur in a particular installation. If this equipment does cause harmful interference to radio or television reception, which can be determined by turning the equipment off and on, the user is encouraged to try to correct the interference by one or more of the following measures:

- Reorient or relocate the receiving antenna.
- Increase the separation between the equipment and receiver.
- Connect the equipment into an outlet on a circuit different from that to which the receiver is connected.
- Consult the dealer or an experienced radio/TV technician for help.

Correct Disposal of This Product



(Waste Electrical & Electronic Equipment)

This Marking shown on the product or its literature, indicate that it should not be disposed with other household wastes at the end of its working life.

To prevent possible harm to the environment or human health from uncontrolled waste disposal, please separate this from other types of wastes and recycle it responsibly to promote the sustainable reuse of material resources.

Household user should contact either the retailer where they purchased this product, or their local government office, for details of where and how they can take this item for environmentally safe recycling.

Business users should contact their supplier and check the terms and conditions of the purchase contract. This product should not be mixed with other commercial wastes for disposal.