

TRAMONTINA

HOME APPLIANCES

4.4 Cu. Ft. WINE & BEVERAGE CENTER

126 Can Capacity



Use & Care Instructions

Read All Instructions Carefully.

Save These Instructions.

Table of Contents

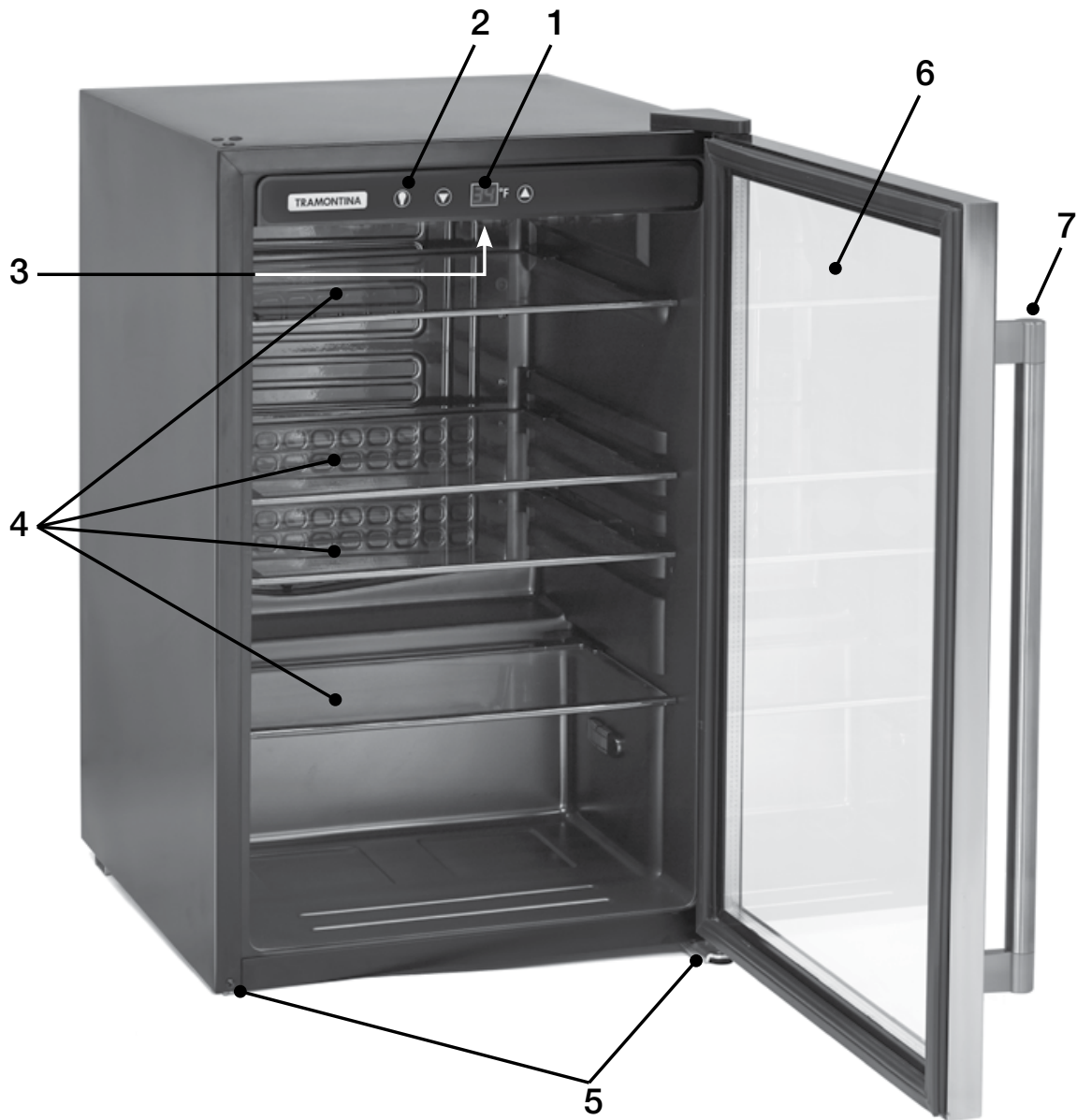
Product Introduction	2
Installation	3-9
Defrosting	10
Cleaning and Maintenance	10
LED Light Replacement	11
Troubleshooting	12
Safety Warnings	13
Customer Service	14
Product Warranty	15



Intertek
3149457

Model #80901/102

PRODUCT INTRODUCTION



- 1 Adjustable Electronic Thermostat with Digital Display
- 2 LED Interior Light Control
- 3 LED Interior Light
- 4 Adjustable Tempered Glass Shelves
- 5 Adjustable Front Leveling Legs
- 6 Reversible Double Pane Glass Door with Stainless Steel Frame
- 7 Stainless Steel Handle

INSTALLATION

STOP!

BEFORE YOU DO ANYTHING!

Do not plug the wine and beverage center into a power outlet until it has been resting in its upright position for at least six (6) hours.

If the wine and beverage center has been laid on its side, placed upside down or tilted more than 45° during moving or transport, it is extremely important to allow the refrigerant and compressor oil to separate and settle so the compressor operates properly. Failure to do so will cause severe mechanical problems with the unit's motor/compressor, and *will void the warranty*.

TRANSPORT

Use two or more people to move the wine and beverage center.

Do NOT use stainless steel handle to move or lift the unit.

VENTILATION SPACE

In order for the wine and beverage center to function efficiently, it MUST be placed in an adequately ventilated space to allow for heat dissipation. It is important to allow at least 2 inches (50 mm) of space on each side and above the unit, and 4 inches (100 mm) of space behind the unit.

The door requires approximately 22 inches (558 mm) of space in front of the wine and beverage center to open. To fully utilize the unit, space should be allowed for the door to open fully to 160°.

STABLE SURFACE

The wine and beverage center must be placed on a flat, stable surface. Adjust the unit's front leveling legs to assure quiet operation and prevent rattling when the compressor activates.

IMPORTANT:

- Never place the unit on soft materials such as foam, plastic or thick textured carpeting.
- Make sure the unit and door are aligned. Use the adjustable legs (front only) to align the unit and/or the screws under the triangular bracket cover to align the door. See page 6 for more detailed instructions on accessing the metal bracket.

INSTALLATION

POWER SUPPLY

This wine and beverage center is equipped with a 115V/60Hz single phase motor. Do not use a ground-fault circuit interrupter (GFCI) outlet to connect the unit. (Fig. A.)

The power plug is a standard grounded three-prong non-polarized flush mount, which allows for easier connection to power outlets.

Power plug must be connected to the outlet directly, and never to an extension cord.

Fig. A



IMPORTANT: Do not cut or remove the third ground prong from the power cord.

POWER CORD

Never shorten or lengthen the power cord. Do not fold or coil the power cord.

IMPORTANT - Never place the excess length of power cord into the compressor enclosure in the back of the wine and beverage center. This action creates a dangerous heat build-up which can melt the cord, cause an electrical hazard and may potentially cause a fire.

Touching the power cord to the compressor at the back of the unit during operation can create an electrical hazard and damage the compressor.

If the power cord is damaged, it must immediately be replaced by a trained service provider, as special tools are required.

CLEAN BEFORE USE

IMPORTANT: Never use with an extension cord. Power cord length is 5 feet long (1524 mm).

To remove any manufacturing dust and residual odors, wipe the wine and beverage center inside and out with a damp cloth and a solution of baking soda and warm water (2 tbsp. baking soda to 1 qt. water). Wipe away any residual baking soda with a clean moist cloth. Allow to dry before operating.

Periodically clean the wine and beverage center with a sponge or cloth moistened with mild soapy water, or baking soda and water.

PROTECT FROM MOISTURE

Heavy moisture in the environment can cause degradation to the insulation, as well as rust to the cabinet, compressor and/or power supply.

Do not spray the wine and beverage center with water.

PROTECT FROM HEAT

Place the wine and beverage center away from heat source or direct sun.

Do not operate your wine and beverage center outdoors or in an environment with high temperatures and/or high humidity, such as garages, attics or outdoor patios. The temperature variances will create condensation on the glass door.

Do not cover the wine and beverage center with tarps or other items while operating, as this may cause overheating.

INSTALLATION

HANDLE INSTALLATION

TOOLS NEEDED: Phillips screwdriver #2.

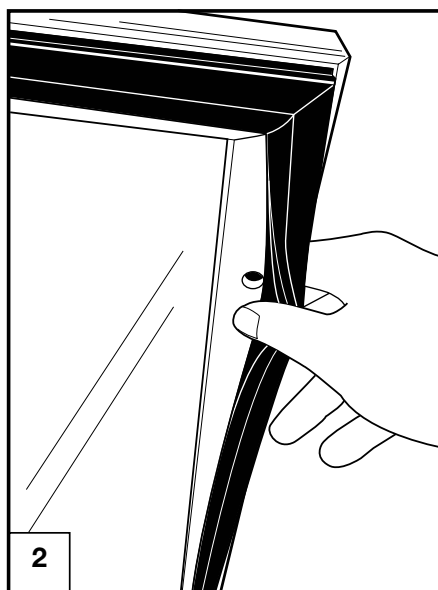
IMPORTANT: NEVER LAY THE WINE AND BEVERAGE CENTER ON ITS BACK.

The compressor and motor components are installed at the back of the unit and may easily be damaged if the wine and beverage center is placed on its back.

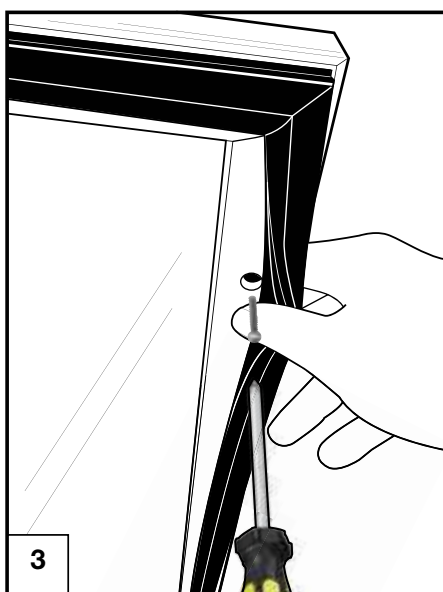
IMPORTANT: DO NOT USE STAINLESS STEEL HANDLE TO MOVE OR LIFT THE UNIT.



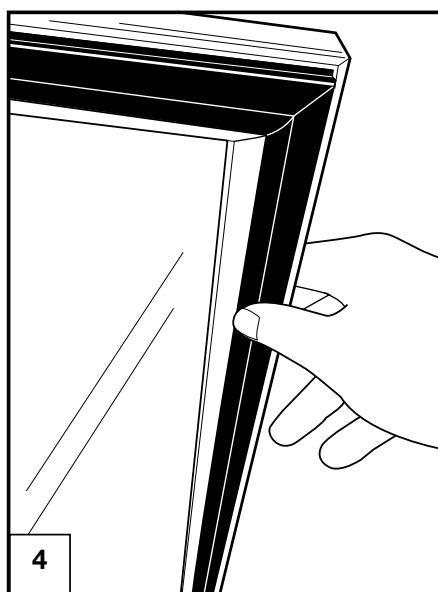
The stainless steel handle is easily attached to the left side of the glass door with two enclosed screws.



Carefully pull back the gasket from the interior door frame as indicated. Insert screws into holes on back side of door under the door gasket. Position the handle on the outside of the glass door.



Tighten both screws until the door handle is flush with the stainless steel frame. Take care not to over tighten the screws, as this may damage the handle or frame.



Gently press and thread the gasket back into the slot on the door frame. Ensure the gasket is properly seated prior to using the unit.

INSTALLATION

DOOR REVERSAL INSTRUCTIONS

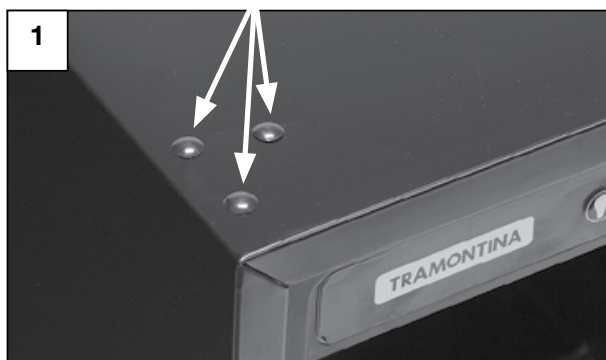
TOOLS NEEDED: Phillips screwdriver #2 or 5/16" (8 mm) socket tool and thin flathead screwdriver.
The wine and beverage center is shipped with the door hinge brackets attached on the right side.
The door may be reversed to allow opening from the left side.

If you plan on reversing the door hinges, DO NOT plug the wine and beverage center into the power outlet.

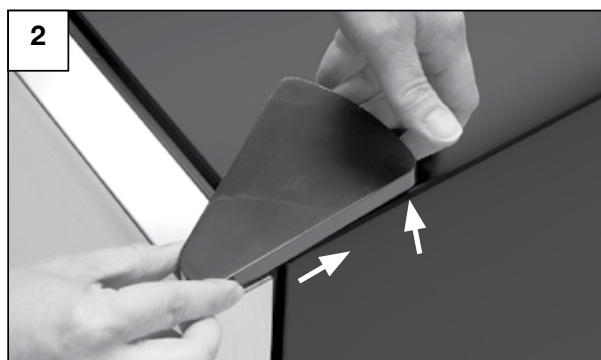
REMOVE GLASS SHELVES BEFORE REVERSING THE DOOR.

IMPORTANT: NEVER LAY THE WINE AND BEVERAGE CENTER ON ITS BACK.

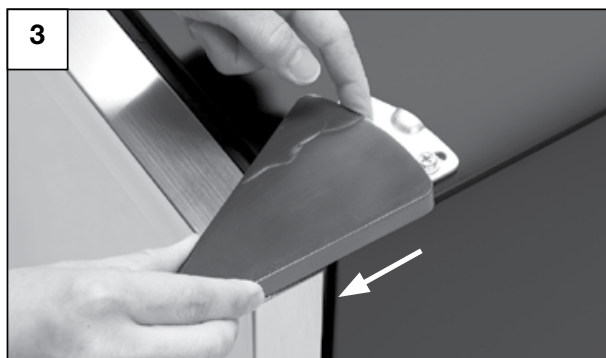
The compressor and motor components are installed at the back of the wine and beverage center and may easily be damaged if the unit is placed on its back.



Gently remove the plastic **hole insert plugs** from the left side of the wine and beverage center with a thin flathead screwdriver. Save the plugs for Step 11.



Loosen the triangular **bracket cover** by pushing the **bracket cover** towards the back of the wine and beverage center and simultaneously pulling up.



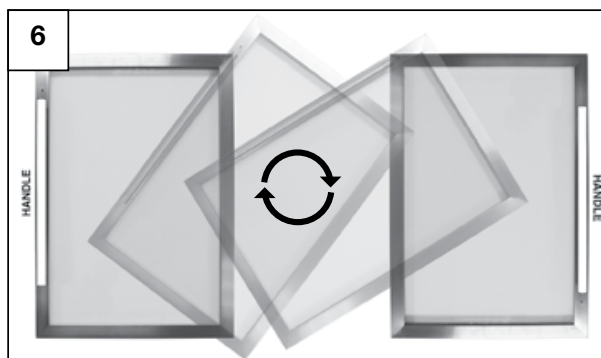
Slide the cover towards the front of the wine and beverage center and lift off.



Remove the metal **bracket** by unscrewing the three screws.



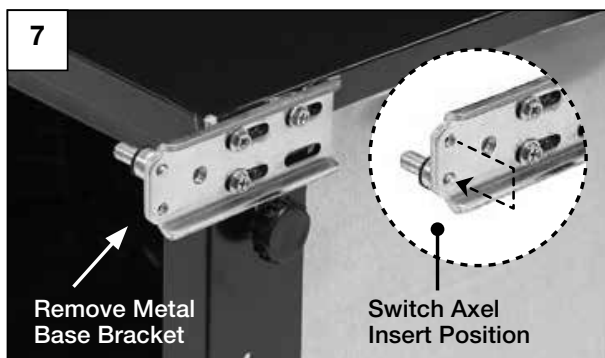
Lift and remove the door.



Rotate door 180° so that the handle is on the opposite side.

INSTALLATION

DOOR REVERSAL INSTRUCTIONS



With the unit on its side, remove the bottom metal **base bracket with nylon washer**. Unscrew the axle insert with a flathead screwdriver. Screw into the opposite hole of the metal base bracket.



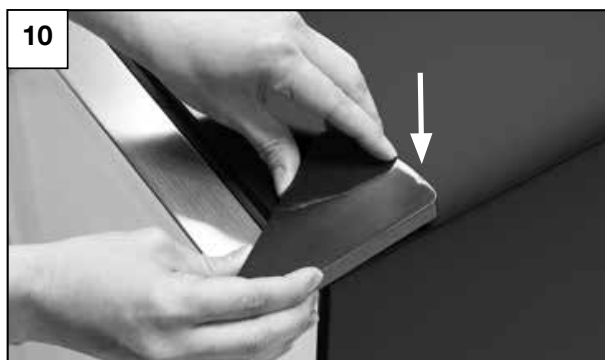
Gently place the wine and beverage center on opposite side to complete the door reversal. Remove screw and re-insert into the opposite side. Re-attach the metal **base bracket with nylon washer** on the new hinge side. Lift the unit to an upright position.



To reattach the door, place the door onto the bottom axle insert. Place the top **bracket** into the door and align the metal **bracket** holes over the holes in the top of the unit cabinet. Tighten the three screws to hold in place.



The rubber gasket should be compressed on all sides of the door. If the gasket is more compressed on one side, the metal bracket position should be adjusted. Make sure the door is level. Once the door position is finalized, securely tighten the screws.



Reinstall the triangular bracket cover by carefully threading the bracket cover onto the metal **bracket** and pressing down.



Reinstall all plastic **hole insert plugs**. The re-installation of the plastic **hole insert plugs** is important to maintain the seal and integrity of the insulation. Extra inserts are included in case the plugs are damaged during removal.

IMPORTANT: It is extremely important to wait at least six hours before plugging the wine and beverage center into a power outlet. During the door reversal process, the refrigerant and compressor oil fluids mixed. It is important to allow the refrigerant and compressor oil to separate and settle so the compressor operates properly. Failure to do so will cause severe mechanical problems, perhaps even the destruction of the unit's motor/compressor, and will void the warranty.

INSTALLATION

USING YOUR WINE AND BEVERAGE CENTER

Startup

Connect the power cord to a standard wall outlet. Do not use a GFCI outlet to connect the unit (see page 4). After connection, you will immediately hear a short beep.

Temperature - Adjustable Thermostat Control

The default temperature is 43°F. Use the ▲ and ▼ buttons to set the desired temperature between the range of 32°F - 61°F.

The display will flash while the temperature is being set. After a few seconds, it will revert to its current internal temperature reading. The digital display reading will adjust as the unit cools. While the unit is adjusting to the new setting, press the ▲ or ▼ buttons to view the selected temperature setting.

If there is a power outage, the unit will revert to the last temperature setting once power is restored.

Loading Beverages

When first loading the wine and beverage center to full capacity, we recommend the following steps to effectively cool a large number of beverages.

1. Use the Adjustable Thermostat Control to set the temperature to 43°F (also the default temperature).
2. Allow the wine and beverage center to cool for a minimum of two hours.
3. Load the beverages. To achieve maximum capacity, refer to the loading diagrams.
4. After initially filling with beverages, the internal temperature will rise as indicated on the display.
5. Once the wine and beverage center has cooled the beverages to 43°F, use the Adjustable Thermostat Control to select a desired cooler internal temperature (lowest temperature setting is 32°F).
6. Allow several hours for the wine and beverage center to cool to the desired lower temperature.

Note: It is normal for temperature variances to occur inside the unit, and areas near the door will have slightly warmer temperatures.

LOADING DIAGRAM

Standard 12 Ounce Cans

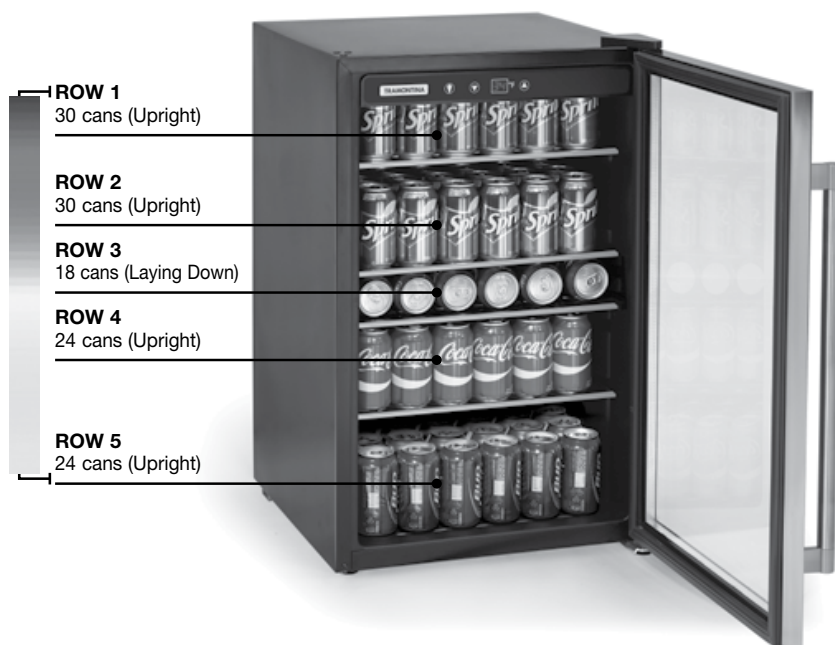
The wine and beverage center accommodates 126 beverages (standard 12 ounce cans).

To accommodate all 126 beverages, position the glass shelves and load the beverages as shown:

Wine Bottles

The wine and beverage center accommodates a range of wine bottles, and the capacity varies depending on the position of the shelves and width of the wine bottles.

Nest the wine bottles to gain greater capacity:



Other Beverages

The glass shelves can be adjusted to accommodate varying sizes of beverage cans and bottles depending upon storage needs.

INSTALLATION

LED LIGHT

Press the  button to turn the LED light on and off.

To enhance the lifespan of the LED light and conserve energy, it is recommended to predominantly utilize the light for loading and selecting beverages.

SHUTDOWN

If the wine and beverage center will not be in use for a long period of time, disconnect it from the power outlet, clean inside thoroughly and leave the door open to prevent mildew.

SAFETY WARNING

The appliance is not intended for use by young children or infirm persons without supervision. Young children should be supervised to ensure that they do not play with the appliance.

This wine and beverage center should not be positioned within a recessed or enclosed cabinet. It is designed for freestanding installation only. This unit is not designed to be installed in a RV, garage or any outside installation.

The surface of the compressor may become hot during normal operation. Do not touch as this may cause injury.

OTHER DANGERS

Keep the wine and beverage center away from any combustible or volatile liquids or gases, including gasoline, oil, alcohol, paint, paint thinners and solvents. Such chemicals should never be stored in the unit.

DEFROSTING

Frost may develop on the interior back panel of the unit when the temperature setting is very low and the unit is not fully stocked with beverages. The presence of frost may force the unit to run continuously and thus increase internal temperature.

To defrost the wine and beverage center:

1. Use the ▲ and ▼ buttons to increase the temperature until the compressor turns off.
2. Allow the internal ice/frost buildup to melt. Ensure the internal drain (located at the middle back of the lower shelf) is not clogged.
3. During this time, the melted frost flows through an internal drain into a holding pan on top of the compressor. The heat of the compressor evaporates the liquid.
4. Reset the temperature to 43°F and allow to cool for at least one hour.
5. Adjust to the desired temperature setting

CLEANING AND MAINTENANCE

It is important to periodically clean and maintain the wine and beverage center. When performing maintenance, make certain the unit is unplugged from the power outlet.

Wipe the inner and outer surfaces of the wine and beverage center clean with a damp cloth. If needed, use a gentle detergent or a solution of baking soda and water. Remove any residue with clean water and a soft cloth, then dry with another cloth.

Once clean, you may use a common kitchen appliance wax on outer surfaces.

Inspect, clean and maintain the rubber gasket around the door. A small amount of petroleum jelly applied to the bracket side of gaskets will keep the gasket pliable and ensure a good seal.

IMPORTANT:

- Do NOT use hot water, harsh detergents, gasoline, kerosene, solvents, acids or anything flammable to clean the wine and beverage center. These can damage the paint and degrade the plastic components.
- Do NOT spray the wine and beverage center with water as this may cause rust and degrade the insulation.
- Do NOT clean glass shelves with hot water when they are cold. Shelves may break if exposed to sudden temperature changes or impact. For your protection, tempered glass is designed to shatter into many small pebble-size pieces.
- If any replacement components are required, they must be obtained from Tramontina's Customer Service Department. This ensures the correct replacement components are provided, and minimizes risk of possible ignition due to incorrect parts or improper service.

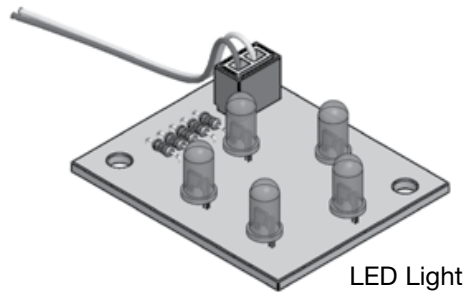
LED LIGHT REPLACEMENT

TOOLS NEEDED: Phillips screwdriver and flashlight to illuminate the work area.

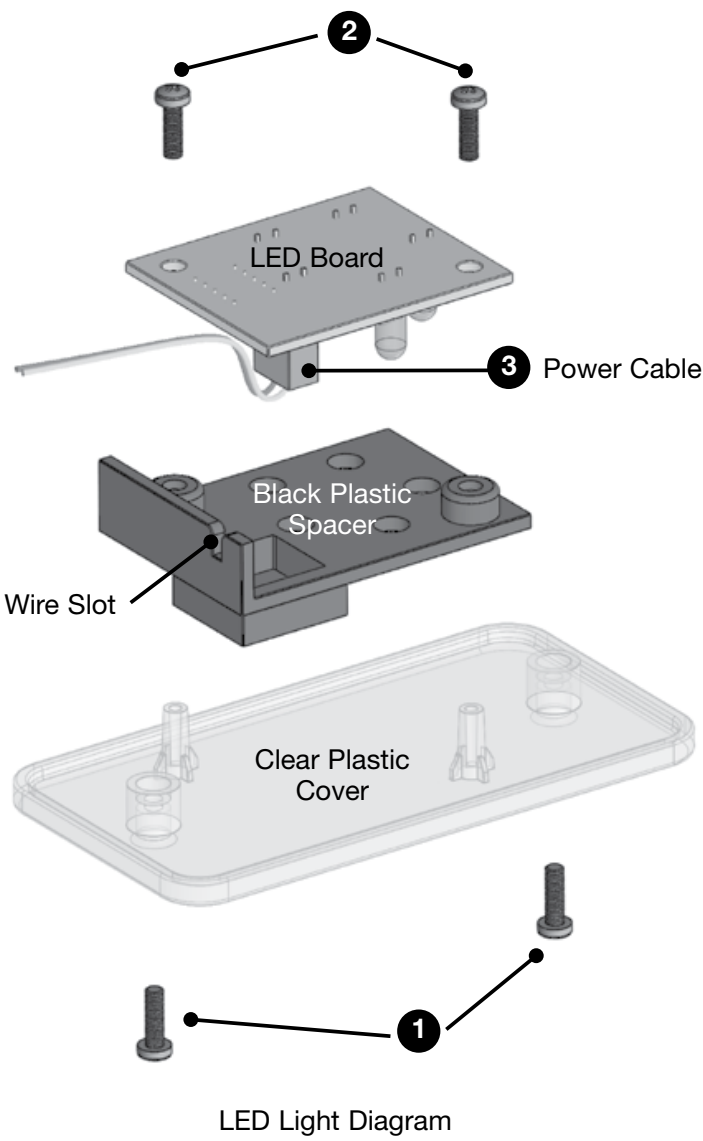
If the LED light is not illuminating, the light most likely needs to be replaced.

Replacement LED lights may be purchased from Tramontina by calling Tramontina's Customer Service Department (800-221-7809).

NOTE: The replacement light is NOT available from home improvement, hardware or discount stores.



LED Light

A detailed diagram showing the steps for removing and installing the LED light. It includes labels for the LED Board, Power Cable, Black Plastic Spacer, Wire Slot, and Clear Plastic Cover. Numbered callouts 1, 2, and 3 indicate the sequence of actions: 1) Removing the screws from the clear plastic cover; 2) Tilting the panel and unscrewing the LED board; 3) Unclipping the power cable from the red socket insert on the LED board.

Removing the Existing LED Light

Unplug the wine and beverage center.

- 1) Using a Phillips screwdriver, remove the two screws from the clear plastic cover.
- 2) Tilt the panel towards the front of the wine and beverage center and unscrew the LED board from the black plastic spacer.
- 3) Gently unclip the power cable from the red socket insert on the LED board.

Installing the Replacement LED Light

- Insert the power cable into the red socket insert on the replacement LED board.
- Position within the black plastic spacer.
- Reassemble the LED board, spacer and cover together using the two screws.
- Tuck the cable into the wire slot.
- Reposition the panel and carefully enclose the cord within the LED housing.
- Reattach the clear plastic panel using two screws.

TROUBLESHOOTING

Problem	Recommended Adjustment
Wine and beverage center doesn't work.	<ul style="list-style-type: none"> • Check for power failure. • Verify unit is plugged into a standard power outlet and not a GFCI outlet (see page 4). • Check if control panel is on.
Wine and beverage center is too cold.	<ul style="list-style-type: none"> • Adjust thermostat to higher number.
Wine and beverage center is not cooling sufficiently.	<ul style="list-style-type: none"> • Adjust thermostat to lower number. • Ensure door is closed properly. • Ensure the door gasket provides a proper seal. If you can slide a piece of paper between the gasket and unit body, the gasket is not sealing properly. • Unit may not have enough ventilation space around it. • Check if the sides of the unit are warm. If not, please contact Tramontina's Customer Service Department. • Do not put hot beverages in the wine and beverage center.
Wine and beverage center compressor runs for long periods.	<ul style="list-style-type: none"> • Hot weather and/or frequent door opening will force the unit to work harder to keep cool. • Do not overload the wine and beverage center. • Do not put hot beverages in the wine and beverage center.
Wine and beverage center door does not close properly.	<ul style="list-style-type: none"> • Unit may be tilted – adjust front legs to level unit. • Align the door using a 5/16" (8 mm) socket, adjusting the screws under the triangular bracket cover. For assistance, please contact Tramontina's Customer Service Department.
Side panel of wine and beverage center is hot.	<ul style="list-style-type: none"> • The unit exchange heats through the side walls, therefore does not indicate malfunction. • Usually happens when door is opened and closed frequently, or when operated in high temperature weather. Results from dissipation of heat from within the unit. Do not touch the panel. Does not indicate a malfunction.
Condensation forms on the glass door	<ul style="list-style-type: none"> • Condensation forms under conditions of high humidity; does not indicate a failure. Wipe condensation with dry towel. • Relocate unit to a cooler area or adjust thermostat to a higher setting to balance out the exterior and interior temperatures. Condensation will dissipate as time goes on.
Sound of trickling water.	<ul style="list-style-type: none"> • This is the refrigerant flowing. Does not indicate a malfunction.
Buzzing sound.	<ul style="list-style-type: none"> • A buzzing noise is typically generated by the compressor when starting up or shutting down.
Odor.	<ul style="list-style-type: none"> • Unit may require cleaning.

SAFETY WARNINGS

Before you use your wine and beverage center, please read this owner's manual carefully. Use this appliance only for its intended purpose as described in this owner's manual.

DANGER - Risk of child entrapment. Before you throw away your old refrigerator or freezer:

- Take off the doors.
- Leave the shelves in place so that children may not easily climb inside.
- The appliance must be correctly installed and connected to the power supply in accordance with the installation instructions before it is used.. (See: "HOW TO INSTALL").
- The main power supply must be properly grounded.
- This wine and beverage center must be positioned so that the plug is accessible. Never unplug the unit by pulling on the power cord. Always grasp the plug firmly and pull straight out from the outlet.
- Do not use an extension cord as this can negatively affect the performance of the unit.
- When transporting the wine and beverage center, keep the unit in the upright position. Do not tilt the appliance beyond 45° or place the unit in upside down position. Do not tip over.
- Do not touch the cooled surfaces while the appliance operates, especially not with wet hands, because the skin may stick to the cold surfaces.
- It is recommended that the wine and beverage center is positioned away from any combustible sources, such as gas, petrol, alcohol, lacquer and banana oil, etc. The aforementioned objects should not be stored in the wine and beverage center under any circumstances.
- If the unit fails to cool properly, dispose of spoiled food as needed.
- Unplug your unit before cleaning or making any repairs. NOTE: If for any reason this product requires service, we strongly recommend that a certified technician perform the service. Repairs made by non-qualified personnel will void the warranty.
- Do not defrost the appliance with other electrical devices (hair dryer, etc.), and never scrape the ice or frost layer with sharp tools. Warning: Do not damage the refrigerant circuit.
- The rating plate is inside the appliance or outside on the rear or side wall.
- This appliance is not intended for use by persons (including children) with reduced physical, sensory or mental capabilities, or lack of experience and knowledge, unless they have been given supervision or instruction concerning use of the appliance by a person responsible for their safety. Children should be supervised to ensure that they do not play with the appliance.
- Do not run cord over carpeting or other heat insulators. Do not cover the cord. Keep cord away from traffic areas, and do not submerge in water. If the supply cord is damaged, it must be replaced by the manufacturer or its service agent or a similarly qualified person in order to avoid a hazard. Repair or replace immediately all electric cords that have become frayed or otherwise damaged. Do not use a cord that shows cracks or abrasion along its length, the plug or the connector end.
- Do not operate your wine and beverage center in the presence of explosive fumes.
- WARNING – Do not use flammable materials on or near the unit. This can result in fire and cause irreparable harm or damage to the unit.
- DANGER – Risk of Fire or Explosion. Flammable Refrigerant Used. To Be Repaired Only By Trained Service Personnel. Do Not Puncture Refrigerant Tubing.
- CAUTION – Risk of Fire or Explosion. Dispose of Property In Accordance With Federal or Local Regulations. Flammable Refrigerant Used.
- CAUTION – Risk of Fire or Explosion. Flammable Refrigerant Used. Consult Repair Manual/ Owner's Guide Before Attempting to Service this Product. All Safety Precautions Must be Followed.
- CAUTION – Risk of Fire or Explosion Due to Puncture of Refrigerant Tubing; Follow Handling Instructions Carefully. Flammable Refrigerant Used.

SAFETY WARNINGS

REMOVE WINE & BEVERAGE CENTER DOOR BEFORE DISPOSING OF UNIT.

SUFFOCATION HAZARD:

The shelves should remain in the wine and beverage center for disposal. This deters children from climbing into the unit, becoming trapped and potentially suffocating.

All safety precautions must be followed.

CUSTOMER SERVICE

In the unlikely event this item is damaged or missing parts, please do not return it to the store. Instead, please contact our customer service department listed below for assistance so we can work quickly and efficiently to resolve product issues.

TRAMONTINA USA, Inc.
Customer Service
12955 West Airport Blvd.
Sugar Land, TX 77478-6119
(800) 221-7809
www.tramontina-usa.com

1 YEAR LIMITED WARRANTY

This product is warranted by **TRAMONTINA** to be free of defects in material and workmanship for a period of one year from the date of the original purchase, provided the unit is used under normal operating conditions intended by the manufacturer. Any piece will be repaired or replaced at no charge with the same item or one of equal or better value if it is found to be defective under normal, noncommercial single-family household use and when cared for according to the manufacturer's instructions limited to improper placement of item, outdoor use or neglect, alteration or use in commercial establishments.

For warranty inquiries, you must first contact TRAMONTINA'S Customer Service Department to receive instructions and/or return authorization. In most cases, our Customer Service Department can assist with many operation/use questions, product manuals or trouble shooting tips, and the return of the unit is usually not necessary.

Tramontina reserves the right to repair or provide replacement parts which may have become defective.

This warranty gives you specific legal rights, and you may also have other rights, which vary according to country, state or province.

Rental exception. For products used in a rental environment, Tramontina's warranty only covers labor and parts for 90 days. No other warranty applies.

Any question regarding this warranty and/or the use and care of this product should be directed to:

TRAMONTINA

TRAMONTINA USA, Inc.

Customer Service

12955 West Airport Blvd.

Sugar Land, TX 77478-6119

(800) 221-7809

www.tramontina-usa.com

For faster assistance, please register your product online at www.tramontina-usa.com

MADE IN CHINA