

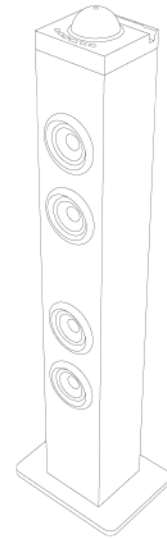


# Wireless Tower Speaker

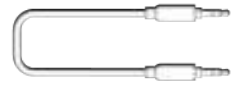
PBT3023 User Manual



## In the Box



Tower Speaker



3.5mm Auxiliary Cable



Power Adapter



Remote Control



Base



Base Screw (x4)

## Location of Controls

### (Top of Speaker)

- [⏻]** Button:  
(Quick Press) Power ON/OFF
- [MODE/LIGHT]** Button:  
(Long Press) Turn disco light ON/OFF  
(Quick Press) Change input mode
- [VOL-/⏮]** Button:  
(Long Press) Decrease volume  
(Quick Press) Skip to previous song, Tune down FM station
- [SCAN/▶||]** Button:  
(Long Press) Scan and save FM radio stations  
(Quick Press) Play/pause playback
- [VOL+/⏭]** Button:  
(Long Press) Increase volume  
(Quick Press) Skip to next song, Tune up FM station

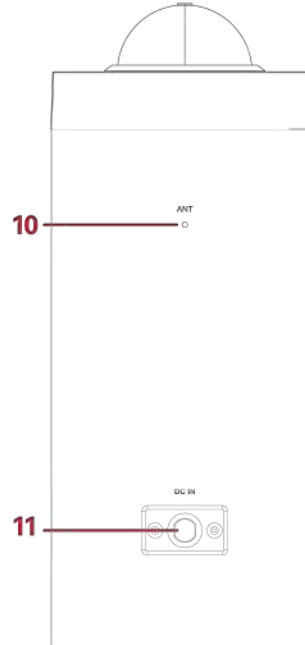
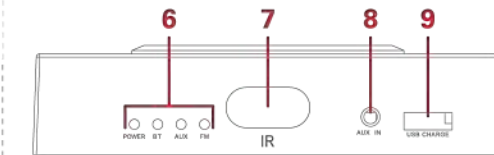
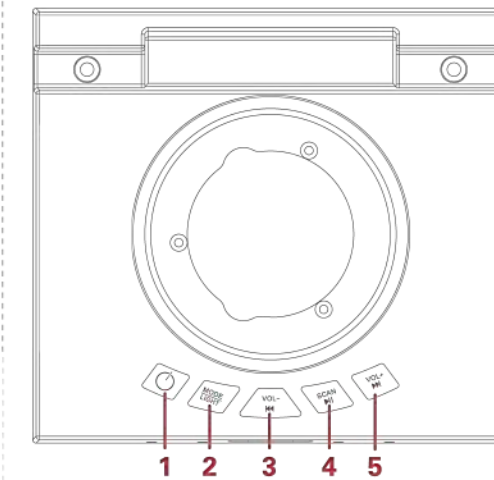
### (Front of Speaker)

- LED Indicators:
  - POWER LED - Power indicator
  - BT LED - Bluetooth indicator
  - AUX LED - Auxiliary input indicator
  - FM LED - FM radio indicator
- Infrared Sensor
- 3.5mm Auxiliary Input Jack
- USB Device Charging Port

### (Back of Speaker)

- Radio Antenna Cable
- DC Power Jack

## Location of Controls (cont'd)



## Location of Controls (cont'd)

### (Remote Control)

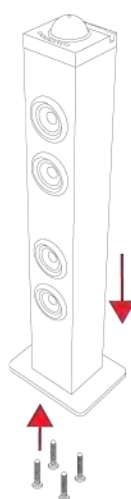
- [MODE]** Button: Change input mode
- [⏻]** Button: Power ON/OFF
- [TUNE-/⏮]** Button:  
(FM Radio Mode)
  - Long Press - Scan down FM station
  - Quick Press - Tune down FM station
 (Bluetooth Mode) Skip to previous song
- [TUNE+/⏭]** Button:  
(FM Radio Mode)
  - Long Press - Scan up FM station
  - Quick Press - Tune up FM station
 (Bluetooth Mode) Skip to next track
- [-]** Button: Decrease volume
- [+]** Button: Increase volume
- [LIGHT]** Button: Turn on lights
- [⏻]** Button: Mute/unmute volume
- [▶||]** Button:  
(FM Radio Mode) Scan and save FM radio stations  
(Bluetooth Mode) Play/pause playback
- [RESET]** Button: Reset to factory settings
- [EQ]** Button: Equalizer
- Numeric Buttons



## Setting Up the Speaker

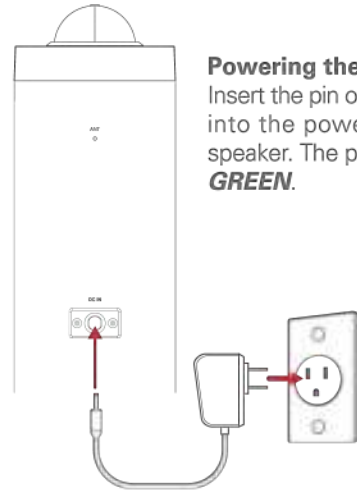
### Installing the Base

Remove the speaker and its contents from packaging. Carefully turn the speaker upside down and lay the base piece on them bottom of the speaker. Using a screwdriver (not included), insert and screw the base screws.



### Powering the Speaker

Insert the pin of the supplied power adapter into the power jack on the back of the speaker. The power LED indicator will turn **GREEN**.



## Setting up the Speaker (cont'd)

### Installing/Replacing the Remote Control Batteries

To replace or install the remote control battery, push and slide the battery door out from the remote control. Replace the battery with a new **CR2025** battery with the positive (+) polarity facing up.



**NOTE:** There is a protective plastic tab inserted into the battery door of the remote control. When using for the first time, gently pull the protection tab extending out of the remote control's battery door.

## Connecting to the Speaker

### Pairing to the Speaker

- Quick press the **[⏻]** button to power the speaker ON. If the speaker is not already in Bluetooth mode, switch it to Bluetooth mode by pressing the **[MODE/LIGHT]** button. Once the speaker is in Bluetooth mode, the Bluetooth LED indicator will flash **GREEN**.
- Set your mobile device to search for Bluetooth devices. When your mobile device finds the speaker, select **PBT3023** from the list of found devices.
- Once successfully paired, a tone will be heard and the Bluetooth LED indicator will slowly flash **GREEN**.

### Using the Speaker with a Wired Device

Insert one of the 3.5mm connectors of the supplied 3.5mm auxiliary cable into the auxiliary input jack on the side of the speaker. Insert the other end of the 3.5mm auxiliary cable into the headphone jack of your media-playing device. Press the **[MODE]** button to switch to AUX mode, the AUX LED indicator will turn **GREEN**.

All media playback is controlled through the connected device.



## Using the Speaker

### Powering ON/OFF

- Quick press the [⏻] button on the speaker to power the speaker ON/OFF
- Quick press the [⏻] button on the remote control to enter/leave standby mode.

### Volume Adjustment

- To increase volume, long press the [VOL+/▶▶] button on the speaker or the [ + ] on the remote control. To decrease volume, press the [VOL-/◀◀] button on the speaker or the [ - ] button on the remote control.
- Press the [🔇] button on the remote control to mute/unmute the speaker.
- Quick press the [EQ] button on the remote control to cycle through the different preset equalized modes.

### Changing Modes

- Quick press the [MODE/LIGHT] button on the speaker or the [MODE] remote control to change between Bluetooth, auxiliary, and FM radio input modes.

### Using the Disco Light

- Long press the [MODE/LIGHT] button on the speaker or the [LIGHT] button on the remote control to turn the disco light ON/OFF.

## Using the Speaker (cont'd)

### Playing Music

To enjoy music wirelessly on your speaker, make sure you are paired to a Bluetooth-enabled device. For more on pairing your device to the speaker, please consult the **Pairing the Speaker** section of the user manual. Once paired, you can control the media playback and volume adjustment with the controls on your paired device.

- To **pause/resume media playback**, quick press the [SCAN/▶|] button on the speaker or remote control.
- To skip to the **previous track**, quick press the [VOL-/◀◀] button on the speaker or the [TUNE-/◀◀] button on the remote control.
- To skip to the **next track**, quick press the [VOL+/▶▶] button on the speaker or the [TUNE+/▶▶] button on the remote control.

If you are playing music on your speaker via the 3.5mm auxiliary input jack, music playback is controlled via your connected device. Volume adjustment can be controlled with the speaker, but it is recommended that the volume on your device is at its maximum level.

For more on using the 3.5mm auxiliary input jack, please consult the **Using with a Wired Device** section of this user manual.

## Using the Speaker (cont'd)

### Using the FM Radio

Once powered ON, press the [MODE/LIGHT] button on the speaker or the [MODE] button on the remote control until the speaker switches to FM radio mode. The FM LED indicator will turn **GREEN**.

### Scanning Stations

- Long press the [SCAN/▶|] button on the speaker or quick press the button on the remote control while in FM radio mode to have the speaker scan for FM radio stations. The speaker will scan for all nearby stations with a strong enough signal strength and save them as presets.
- Jump directly to the saved stations using the number buttons on the remote control.
- Skip through frequencies by quick pressing the [VOL-/◀◀] and [VOL+/▶▶] buttons on the speaker or the [TUNE-/◀◀] and [TUNE+/▶▶] buttons on the remote control.
- Long press the [TUNE-/◀◀] and [TUNE+/▶▶] buttons on the remote control to scan through saved stations.

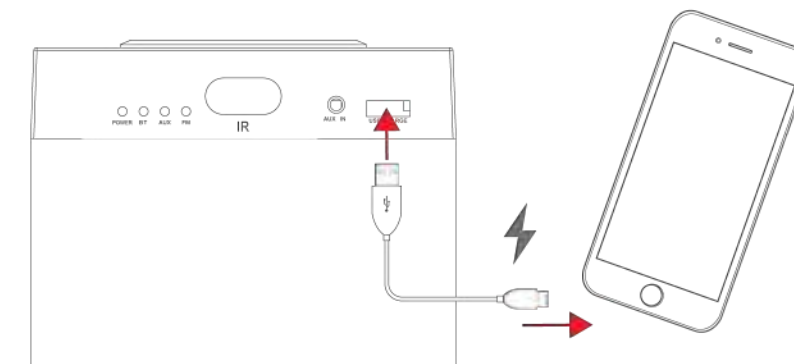
**NOTE:** For best results, extend the FM antenna cable on the back of the speaker toward an open window or an area with direct line of sight toward the sky.

## Using the Speaker (cont'd)

### Charging USB Devices

Once the speaker is powered ON, USB devices can be charged via the USB Device Charging Port on the front of the speaker.

Plug a USB charging cable (*not included*) into the USB Device Charging Port and attach the other end of the cable to the charging port on your USB device.



**NOTE:** The USB Device Charging Port is used **ONLY** for charging devices. Music or files cannot be played or transferred to the speaker.

## Legal Information

### READ THIS CAREFULLY AND SAVE FOR FUTURE REFERENCE

This device complies with part 15 of the FCC Rules. Operation is subject to the following two conditions: (1) This device may not cause harmful interference, and (2) this device must accept any interference received, including interference that may cause undesired operation.

This equipment has been tested and found to comply with the limits for a Class B digital device, pursuant to part 15 of the FCC Rules. These limits are designed to provide reasonable protection against harmful interference in a residential installation. This equipment generates, uses and can radiate radio frequency energy and, if not installed and used in accordance with the instructions, may cause harmful interference to radio communications. However, there is no guarantee that interference will not occur in a particular installation. If this equipment does cause harmful interference to radio or television reception, which can be determined by turning the equipment off and on, the user is encouraged to try to correct the interference by one or more of the following measures:

- Reorient or relocate the receiving antenna.
- Increase the separation between the equipment and receiver.
- Connect the equipment into an outlet on a circuit different from that to which the receiver is connected.
- Consult the dealer or an experienced radio/TV technician for help.

Caution: Any changes or modifications to this device not explicitly approved by manufacturer could void your authority to operate this equipment.

The device has been evaluated to meet general RF exposure requirement. The device can be used in portable exposure condition without restriction.

### Rain/Moisture Warning

- Do not expose the unit to extreme temperatures (heat or cold), open flames, humid conditions, or wet conditions.
- Do not submerge in water.
- Do not open this product or attempt to repair the unit yourself should it not be working.

## Warranty Information

This product as supplied and distributed new by AIT, Inc. ("AIT") to the original consumer purchaser is warranted by AIT against defects in material and workmanship for a period of one year from your date of purchase ("Warranty"). In the unlikely event that this product is defective, or does not perform properly, you may within one year from your original date of purchase return it to the authorized service center for repair or exchange.

### TO OBTAIN WARRANTY SERVICE:

- Call the Customer Support number located below, or go to our website portal to receive an SRO number.
- Provide proof of the date of purchase within the package (dated bill of sale).
- Prepay all shipping costs to the authorized service center, and remember to insure your return.
- Include a return shipping address (no P.O. Boxes), a telephone contact number, and the defective unit within the package.
- Describe the defect or reason you are returning the product.

Your product will be repaired or replaced, at our option, for the same or similar model of equal value if examination by the service center determines this product is defective. Products received damaged as a result of shipping, will require you to file a claim with the carrier.

The shipping address of the authorized service center is:

**AIT, Inc.**  
**Customer Service Dept. 36**  
**c/o Southern Telecom**  
**400 Kennedy Drive**  
**Sayreville NJ 08872**

For further customer service:  
 **SouthernTelecom.com**  
Click on **Product Support**

IN NO EVENT WILL AIT, ITS MANUFACTURERS, DISTRIBUTORS OR PLR IP HOLDINGS, LLC BE LIABLE FOR ANY INCIDENTAL, DIRECT, INDIRECT, SPECIAL, PUNITIVE OR CONSEQUENTIAL DAMAGES (SUCH AS, BUT NOT LIMITED TO, DAMAGES FOR LOSS OF PROFITS, BUSINESS, SAVINGS, DATA OR RECORDS) RELATED TO THIS PRODUCT. EXCEPT AS STATED HEREIN, NO OTHER WARRANTIES SHALL APPLY.



PLR IP Holdings, LLC, its licensees and affiliates, fully support all electronic waste initiatives. As responsible stewards of the environment, and to avoid violating established laws, you should properly dispose of this product in compliance with all applicable regulations, directives or other governances in the area where you reside. Please check with local authorities or the retailer where you purchased this product to determine a location where you can appropriately dispose of the product.

Polaroid, Polaroid & Pixel, Polaroid Color Spectrum, and Polaroid Classic Border Logo are trademarks of PLR, IP Holdings, LLC, used under license.

