

- Parental guidance and supervision are required at all times.
- Please keep this manual and all information relating to this product for future reference.

BEFORE YOU BEGIN PLAY

⚠ WARNING :

Remove all packing material ties and dispose them before giving toy to child.

ESTIMATED CHARGING TIME

Initial charging can take approximately 10 hours.

(Never charge the battery longer than 8 hours after initial charge.)

⚠ WARNING:

DO NOT USE NON-ORIGINAL OR NON-RECOMMENDED PRODUCTS WITH YOUR 6-VOLT BATTERY-POWERED RIDE-ON.

Altering of the original components or use of non-recommended replacement parts may or may not be compatible with the design and may cause an unsafe condition resulting in serious injury or death.



POWER SUPPLY CONNECTION

NOTE: The battery is disconnected for shipment to prevent the battery from draining.

BATTERY CHARGING

IMPORTANT!

Before first time use, please fully-charge the battery for 10 hours. Charge the battery after each use of the vehicle, regardless of how long the vehicle was used. Do not charge the vehicle for more than 8 hours at each charge after first use. Never charge the battery longer than 8 hours. Overcharging or undercharging the battery may shorten battery life and decrease vehicle running time.

⚠ **WARNING:** Battery can fall out and injure a child if the vehicle tips over. Always use battery retainer.

IMPORTANT NOTE:

- We recommend that you start charging your battery before playing with your new 6V Battery-Powered Ride-On.
- The charger is not a toy. Please keep away from children.
- Do not short-circuit the battery.
- You do not need to remove the battery from your vehicle to recharge it.
- Before charging the battery, examine the battery case for cracks and other damage which may cause sulfuric acid (electrolyte) to leak during the charging process. If damage is detected, do not charge the battery or use it in your vehicle. Battery acid is very corrosive and can cause severe damage to surfaces it contacts. Take precautions to protect the surface on which you charge your battery.
- **Use only the charger provided with the toy.**
- **NOTE TO ADULTS:** Regularly examine the charger for damage to the cord, plug, or other parts that may result in the risk of fire, electric shock or injury.
- If your battery is old and will not accept a charge, do not leave it in the vehicle. Always remove a dead battery from the vehicle.
- Charge the battery at least once per month, even if the vehicle has not been used.

NOTE:

- This product has CHARGING PROTECTION: when charging, the vehicle cannot be operated to go forward as this function will be cut off.
- Recharge after initial charge up to 10 hours and never charge the battery longer than 8 hours.
- When the vehicle begins to run slowly, recharge the battery.

⚠ **WARNING:** Use the charger in dry locations only.

- WARNING: This toy produces flashes that may trigger epilepsy in sensitised individuals.

Manufactured by:
DONGGUAN INNOTECH JINGLI LIMITED

**IMPORTED FOR KMART STORES
IN AUSTRALIA AND NEW ZEALAND**



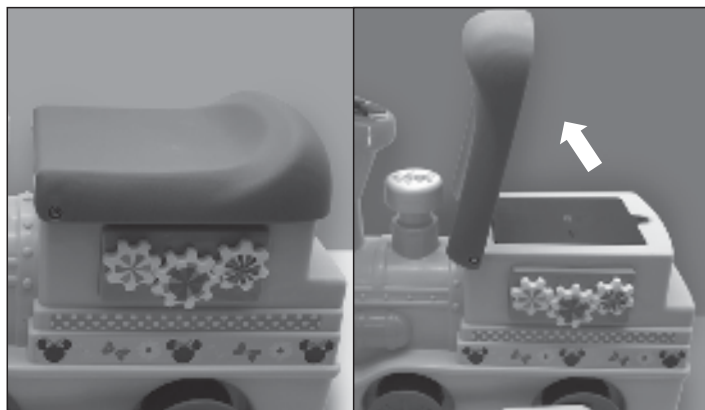
©Disney
www.disney.com



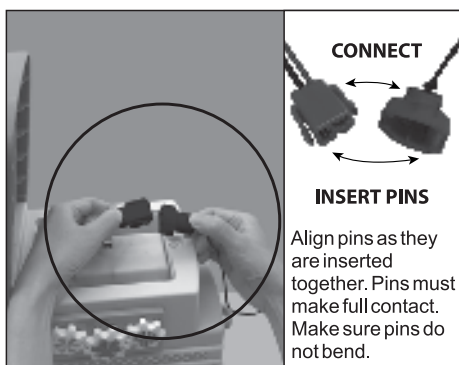
Made in China
Item No. 061168



HOW TO CHARGE YOUR 6V BATTERY-POWERED RIDE-ON:



1. Lift up the seat cover. Unscrew the screw on the battery compartment cover. Battery with connector is located inside seat, and note that the battery charger is stored inside the caboose.

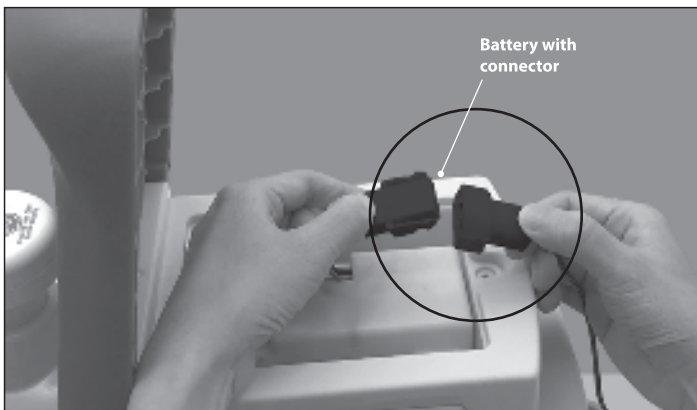


CONNECT

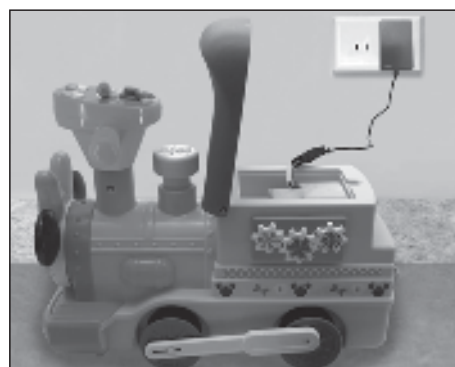
INSERT PINS

Align pins as they are inserted together. Pins must make full contact. Make sure pins do not bend.

2. Connect the battery connector from the 6-volt battery-powered ride-on with the connector from the charger. Align pins as they are inserted together. Make sure pins do not bend and make full contact.

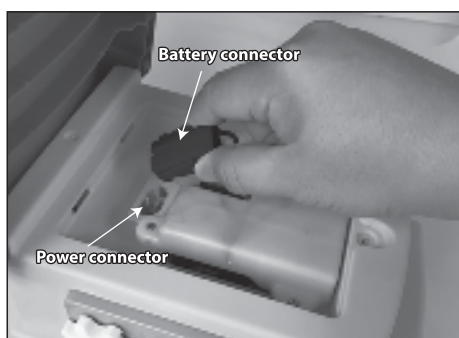


3. Plug the charger plug into a wall outlet. The battery will begin charging with a red light on.

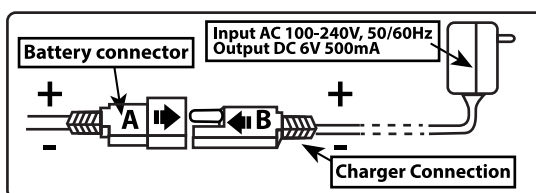


4. Once the vehicle is fully charged, unplug the charger and put it away in a safe place. **KEEP ALL CHARGERS AWAY FROM CHILDREN. USE THE CHARGER IN DRY LOCATIONS ONLY.**

5. Plug the battery connector into the power connector. Your 6-volt Battery-Powered ride-on is now ready for play.



Do not store the battery in temperatures above 75°F (23.5°C) or below 32°F (0°C)



• The "Wheel Bin" symbol means that waste electrical products should not be disposed of with household waste. You can help protect the environment! Please recycle at your local recycling facility. Check with your local authority for recycling advice.



HOW TO USE YOUR 6-VOLT BATTERY-POWERED RIDE-ON

POWER BUTTON



1. Press power ON/OFF button located on the ride-on.
2. To move the 6-volt battery-powered ride-on forward, step gently on the footrest power button to drive. Always hold onto handles tightly when driving to avoid injuries.
3. To stop, release the footrest power button.
4. If the ride-on is not being played, press to "OFF" on the "ON/OFF" button to turn off the motor. When "OFF" is pressed, the vehicle will not move forward even when the power button on the foot rest is pressed.

⚠ WARNING:

Always stay seated and keep both hands on the handles tightly while riding. Be extra cautious when applying force on the footrest power button as child adapts to the speed of the 6-Volt battery powered ride-on. Always keep a clear lookout of where you are driving as failure in doing so could result in injury. Adult supervision is required at all times to be safe.

INSTRUCTIONS FOR HANDLING RECHARGEABLE BATTERY:

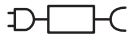
- Never mix different types of batteries or mix new and used batteries.
- Charging batteries should be handled by ADULTS ONLY.
- Exhausted batteries are to be removed from the toy by ADULTS ONLY.
- The supply terminals are not to be short-circuited. Never lift or carry the battery by the wires or connector. This can damage the battery and possibly cause a fire resulting in serious injury. Lift and carry the battery by the case only.
- Non-rechargeable batteries are not to be charged.
- HOT motors. Handle carefully.

INSTRUCTIONS FOR USING THE CHARGER:

The charger should be examined regularly for damage to the cord, plug, enclosure and other parts. In the event of such damage, the 6-Volt Battery-Powered Ride-On toy should not be charged until the charger has been repaired by qualified personnel or replaced. Use only with charger provided with the toy.

- Always use caution when charging.
- The charger is not a toy and should be operated by an adult.
- Always use the charger supplied to charge batteries for the 6-volt battery-powered ride-on.
- Never operate the charger near flammable materials or liquids, and operate the charger in well-ventilated areas.
- Disconnect the charger and unplug it from the 6-Volt Battery-Powered Ride-On toy when not in use.
- Do not exceed the recommended charging time.
- Always disconnect the charger from the 6-Volt Battery-Powered Ride-On prior to wiping down or cleaning the 6-volt battery-powered ride-on toy with a dry cloth.



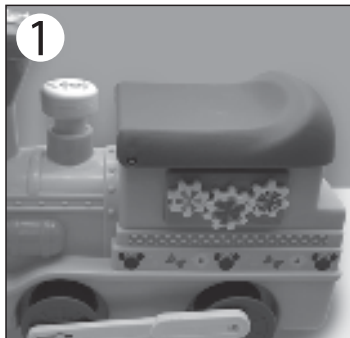
Read operator's manual  Separate supply unit

HOW TO REPLACE THE 6V BATTERY:

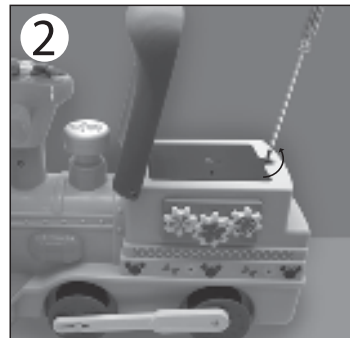
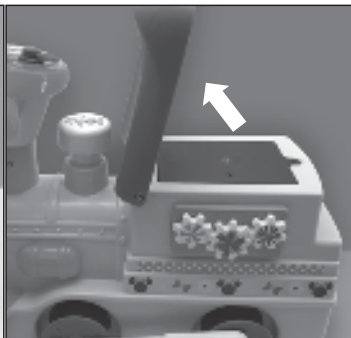
Note:

Disconnect the power connector from the battery connector before conducting any maintenance procedures. Before first time use, charge the battery for 10 hours.

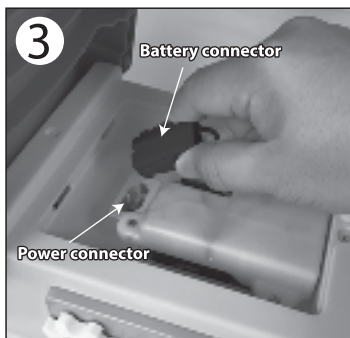
TOOLS REQUIRED: Philips Screwdriver (not included)



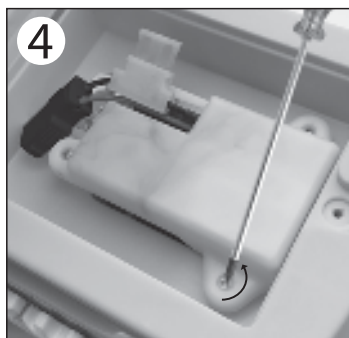
1. Lift up the seat cover.



2. Unscrew the battery compartment cover and remove it.



3. Unplug the power connector which is connected to the battery.



4. Unscrew the three screws on the battery compartment with a screwdriver and remove the battery retainer.



5. Carefully lift the old battery and replace it with a new battery.

6. Put the battery retainer back in place and secure it with screws. Plug the battery connector into the power connector, and align pins as they are inserted together to ensure full contact is made. Secure the battery compartment cover back in place by securing the screw. Put down the seat cover and train is ready for play.



SAFETY AND WARNINGS

This instruction sheet must be retained as it contains important information.

⚠ GENERAL WARNING: Riding a 6-Volt Battery-Powered Ride-On toy can be a dangerous activity, even under the best of circumstances. Proper maintenance of your new ride-on toy is your responsibility and helps reduce the risk of injury. Certain conditions may cause components to fail without fault of the manufacturer. The ride-on toy can and is intended to move, and it is therefore possible to lose control, fall off and/ or get into dangerous situations that no amount of care, instruction or expertise can eliminate. If such a thing does occur, your child can become seriously injured, even when using safety equipment and other safety precautions.

⚠ WARNING: To reduce risk of injury, adult supervision is required at all time. Never use in roadways, near motor vehicles, on or near steep inclines or steps, swimming pool or other bodies of water; always wear shoes, and never allow more than one (1) rider.

THIS PRODUCT CONTAINS SEALED LEAD ACID BATTERIES WHICH MUST BE RECYCLED IN ACCORDANCE TO YOUR LOCAL AND STATE LAWS. PLEASE READ CAREFULLY AND UNDERSTAND THE FOLLOWING DISPOSAL INSTRUCTIONS:

DISPOSAL:

This product contains sealed lead acid batteries which must be disposed of or recycled in an environmentally safe manner. Do not dispose of the batteries in your household trash. Do not dispose of the batteries in a fire, as the battery may explode or leak. The incineration, disposal in landfill and/or placing sealed lead acid batteries with household trash is prohibited by law in most areas. Return exhausted batteries to a state or federal approved lead acid battery recycler or check with your local retailer of vehicle batteries.

⚠ WARNING:

- Do not store the battery in temperatures above 75°F (23.5°C) or below 32°F (0°C).
- If a battery leak develops, avoid contact with the leaking acid and place the battery in a plastic bag. See instructions above for proper disposal.
- If acid comes in contact with skin or eyes, flush with cool water for at least 15 minutes and call a physician immediately.
- If acid is internally ingested, give water. Never give emetics or induce vomiting. Call a physician immediately.

CARE

- Leaving the battery in a discharged condition will ruin it.
 - Always remove an exhausted battery from the ride-on. Battery leakage and corrosion can damage the ride-on.
 - Do not store the battery on a surface which could be damaged by the acid contained inside the battery.
 - Use only the battery provided. Remember to charge the new battery for at least 10 hours before first use.
 - Examine the battery, charger and their connectors for excessive wear or damage each time you charge the battery.
- If damage is detected, do not use the charger or the battery until you have replaced the worn or damaged part.

ABOUT FUSES

Your 6-Volt Battery-Powered Ride-On is equipped with an overcurrent protector and fuse. The protector is a self-resetting safety device which automatically “trips” and shuts down operation of the ride-on if the ride-on is overloaded or the driving conditions are too severe. Once a fuse has “tripped”, **DO NOT CONTINUOUSLY PUSH ON THE POWER BUTTON**. The fuse will automatically reset itself after approximately 1 minute and allow the vehicle to resume normal operations. To avoid repeated automatic shutdowns, do not overload the ride-on by exceeding the 55lb (25kg) maximum weight capacity or by towing anything behind the vehicle. Avoid severe driving conditions, such as driving up slopes or running into fixed objects, which can cause the wheels to stop spinning while power is still being supplied to the motor.

PREVENT FIRE

- Never modify the electrical system.
- Alterations could cause a fire resulting in serious injury and ruin the electrical system.
- Use of the wrong type of battery or charger could cause a fire or explosion.
- Use of non-original components on this vehicle could cause overheating, fire or explosion.
- The battery must be handled by adults only.
- The battery is heavy and contains sulfuric acid (electrolyte).
- Dropping the battery can result in serious injury.
- Battery charging must be done by ADULTS ONLY.
- Never lift or carry the battery by the wires or connector. This can damage the battery and possibly cause a fire. Lift the battery by the case only.
- Read the safety instructions on the battery.
- Examine the battery, charger and their connectors for excessive wear or damage each time you charge the battery.
- If damage or excessive wear is detected, do not use the charger or the battery until you have replaced the worn or damaged part.

⚠ CAUTION: Use the charger in dry locations only.

RIDE AT YOUR OWN RISK AND ALWAYS USE COMMON SENSE

This manual contains many warnings and cautions concerning the consequences of failing to inspect, maintain or properly use your 6-Volt Battery-Powered Ride-On toy. Because any fall can result in serious injury or even death, we do not repeat the warning of possible serious injury or death each time such a possibility is mentioned in this manual or the risk of falling leads to a warning.

ALWAYS USE PROPER RIDING ATTIRE

Always wear appropriate clothing and shoes, including long sleeved shirts and long pants and lace-up or similar shoes with rubber soles. Never ride barefoot or in sandals and make sure shoelaces or other fasteners are tied and kept away from the wheels and drive system of the ride-on toy.

RIDER USE AND REQUIRED PARENTAL SUPERVISION

WARNING! NOT TO BE USED BY CHILDREN OVER 36 MONTHS DUE TO INSUFFICIENT STRENGTH. RIDER MUST NOT EXCEED THE WEIGHT LIMIT OF 55 pounds (25kg) and MUST BE OVER 18 MONTHS OLD.

The age grade for the 6-volt battery-powered ride-on toy is for ages 18-36 months. Even if your child is within the age and weight limitations specified for the 6-Volt Battery-Powered Ride-On toy, it does not imply his/her size is appropriate to fit or maintain control of vehicle, or that he/she is capable of safely operating the vehicle. Please determine whether your child is at the appropriate developmental stage for safe use of the 6-Volt Battery-Powered Ride-On toy. Any rider that is unable to fit comfortably on the 6-Volt Battery-Powered Ride-On toy should never attempt to ride it. A parent's decision to allow their child to use the vehicle should be based on the child's maturity, skill and their ability to follow rules. Remember that the 6-Volt Battery-Powered Ride-On toy is intended for use only by children who are, at a minimum, able to comfortably and safely operate it. Children operating the 6-Volt Battery-Powered Ride-On toy should be supervised by an adult at all times. Parents should ensure that children only use the 6-Volt Battery-Powered Ride-On toy safely and within their age and physical limits.

THIS MANUAL CONTAINS VERY IMPORTANT SAFETY INFORMATION:

- Please completely review all information in this Instruction Manual to ensure all riders understand all of the warnings, cautions, instructions and safety topics mentioned.
- You must periodically review and reinforce all information on this manual with all riders.
- You must regularly inspect and maintain your 6-Volt Battery-Powered Ride-On toy to ensure safety of all riders.
- Check to ensure your 6-Volt Battery-Powered Ride-On toy is properly fitted to the rider and it is in good repair and safe operating condition.
- Children should be made aware of all possible riding hazards and correct riding behavior and attire before they ride the 6-Volt Battery-Powered Ride-On toy.

PRE-RIDE SAFETY CHECKLIST

- ☒ Check to make sure that all components are properly secured and are functioning according to the manufacturer's specifications.
- ☒ Components must be maintained are repaired and only with the manufacturer's authorized replacement parts. Installation should be performed only by adult, qualified personnel.
- ☒ Only ride the 6-Volt Battery-Powered Ride-On on the tracks included. Do not attempt to ride it on other surfaces or without tracks.

IMPORTANT

- Do not let any child touch the wheels or be near them when ride-on is moving.
- To avoid accidents, please inspect the ride-on before riding to ensure that it is in proper working order and safe to ride.
- To drive your 6V battery-powered ride-on, press power "ON/OFF" button, and then step on the footrest power button. Ride-On will then go forward.
- This ride-on has no brake. To stop, take your foot off the footrest power button. Ride-On will then stop.
- If ride-on is not being played, press to "OFF" on the power ON/OFF button to turn off the motor. When "OFF" is pressed, the vehicle will not move forward even when the footrest power button is pressed.
- Check all the screws, cap nuts and protective coverings regularly and tighten as required. Check plastic parts on a regular basis for cracks or broken pieces.
- Your new battery must be charged for at least 10 hours before you use it in your 6-Volt Battery-Powered Ride-On for the first time.
- Do not clean the vehicle with water. Wipe it with a dry cloth only.
- Always disconnect the vehicle from any power supply before cleaning.

SAFETY PRECAUTIONS

- Children riding the toy must have adult supervision at all times.
- Do not ride on the road, driveways, near pools or water.
- Do not allow children under or over the recommended age to ride the vehicle; please refer to the age grading guide.
- To stop the vehicle, you must take your feet off the power button on the footrest.
- Charging should only be done by an adult.
- An adult must teach the child how to operate the 6-Volt Battery-Powered Ride-On.
- Do not ride on hills or slopes, in sand or on other soft, wet, or slippery surfaces.
- Do not use a different size battery. Use only the original or recommended replacement battery.
- The 6-Volt Battery-Powered Ride-On is designed to carry only one rider at a time. Never over-load the ride-on.
- This product should be checked by adults before use.

⚠ WARNING:

Never modify or alter the electrical system. Alterations could cause a fire or explosion resulting in serious injury or death and could also ruin the electrical system.



WARNING:

To reduce the risk of injury, adult supervision is required. Never use in roadways, near motor vehicles, on or near steep inclines or steps, swimming pools or other bodies of water; always wear shoes and never allow more than 1 rider.

RISK OF FIRE. Do not bypass.

Replace only with AB19U025.

SAFE RIDING PRACTICES AND WARNINGS

- Check and obey all local laws or regulations which may be in effect in the locations where the 6-Volt Battery-Powered Ride-On toy may be used.
- Never ride the vehicle in traffic.
- Always wear appropriate clothing and shoes.
- Observe the age and weight limitations on the cover of this manual.
- Always stay seated while riding 6-Volt Battery-Powered Ride-On toy. To stop, you must take your foot off the power button on the footrest.
- If ride-on is not being played, press to "OFF" on the "ON/OFF" button to turn off the motor. When "OFF" is pressed, the vehicle will not move forward even when power button on the foot rest is pressed.
- Children must be supervised by an adult at all times to be safe.
- Always be alert and ride your 6-Volt Battery-Powered Ride-On toy defensively. Watch out for obstacles that could trip one of the vehicle's wheels or force you to turn suddenly and/or lose control. Be careful to avoid pedestrian, persons using other wheeled products (including roller or in-line skates, skateboard, scooters, bikes, etc.), children or animals who enter your path. Always respect the right and property of others.
- Do not activate the power button unless you are seated on the vehicle and in a safe environment that is suitable for riding your 6-Volt Battery-Powered Ride-On toy.
- Do not attempt or perform any stunts or tricks on the vehicle. It is not made to withstand such misuse and abuse.
- Keep both hands on the steering wheel at all times.
- Do not touch the motor on the 6-Volt Battery-Powered Ride-On toy when in use or directly after use as these parts can become extremely hot.
- Never allow more than one person to ride the 6-Volt Battery-Powered Ride-On toy at one time and never try to tow anything.
- Avoid riding backwards as it is important to look ahead and ride on level ground without loose debris.
- Do not use near steps, water, or swimming pools.
- Do not ride in wet weather.
- Never immerse the 6-Volt Battery-Powered Ride-On toy in water; electrical and drive components could be damaged by water or create other potentially unsafe conditions.
- Keep your fingers and other body parts away from the motor, steering system, wheel and all other moving components.
- Never hitch onto another vehicle or let yourself be pulled or pull anyone or anything while riding the 6-Volt Battery-Powered Ride-On toy.
- Ride only on smooth, flat, dry surfaces such as pavement or level ground without loose debris, such as sand, leaves, rocks or gravel. Water, mud, ice, bumpy, un-even, slick, or rough surfaces could impair traction and contribute to possible loss of control.
- Do not ride on carpets.
- Do not ride on or near hills or steep inclines. Ride only on level ground to avoid tip over.
- Avoid sharp turns, bumps, drainage grates and other obstacles.
- Do not ride at night or where there is limited visibility.
- Do not ride indoors or on surfaces that could become damaged such as carpet or flooring.
- Do not ride on streets, around cars, or in foot or vehicle traffic.
- Regularly check the 6-Volt Battery-Powered Ride-On toy and its components. If any parts are broken or worn, do not ride the vehicle until you have fixed or replaced the broken or worn parts.
- Store your 6-Volt Battery-Powered Ride-On toy indoors at all times. Avoid direct sunlight and humid interiors.
- Do not allow hands, feet, hair, body parts, clothing, or similar articles to come in contact with wheels or other moving parts.
- Before each cycle of operation, you must perform the pre-operation checks specified in this manual or by the manufacturer, including:
 - The area that the 6-Volt Battery-Powered Ride-On toy is to be operated in is safe and suitable for safe operation;
 - All safety labels are in place and understood by everyone, including the riders;
 - The rechargeable batteries are charged and in serviceable condition;
 - That tires/wheels are in good condition.
- Avoid sharp dumps, drainage grates, and sudden surface changes.
- Warning! Special attention to the potential hazards of using the ride-on electric toy in areas other than private grounds.
- The toy should be used with caution since skill is required to avoid falls and collisions causing injury to the children or third parties.

WARRANTY

LIMITED WARRANTY

Subject to the following limitations, the 6 volt battery and charger in the 6-Volt Battery-Powered Ride-On manufactured by Kiddieland have a limited warranty period of six months from the date of purchase.

No other express or implied warranty is given. Kiddieland will replace without charge the 6V battery or charger which are determined by Kiddieland to be defective under normal use and service within the warranty period. The original purchaser will be responsible for any and all labor charges connected with the repair or replacement of component parts.

This Limited Warranty does not apply to normal wear and tear with use, nor malfunctions, or failures that result from abuse, neglect, improper assembly, improper maintenance, lack of maintenance, improper storage alteration, modification, collision, crash, or misuse of the Kiddieland 6 volt battery and charger.

This Limited Warranty remains valid only when the original sales receipt is presented.

Do not perform trick riding, ramp riding, stunting, jumping, aggressive riding, riding on severe terrain, riding in severe climates, riding with heavy loads, commercial activities, or other similar activities; such use is inherently dangerous, can cause serious injury to the rider, and if done, it is with the rider and/ or the rider's parent's express and implied assumption of the risk of such use, and Kiddieland shall not have any responsibility for any resulting break down of the ride-on toy or its components, or for any rider injuries that occur during such use.

THE PURCHASE OF THIS 6 VOLT BATTERY-POWERED RIDE-ON WILL CONFIRM THE BUYER'S AGREEMENT THAT KIDDELAND'S LIABILITY UNDER THIS WARRANTY SHALL BE NO GREATER THAN THE AMOUNT OF THE ORIGINAL PURCHASE PRICE AND IN NO EVENT SHALL KIDDELAND BE LIABLE FOR INCIDENTAL OR CONSEQUENTIAL DAMAGES.

This limited Warranty will be void if the product is ever:

- used in a manner other than for recreation
- modified in anyway
- used as a rental

Kiddieland does not offer an extended warranty. If you have purchased an extended warranty, it must be honored by the store from which you purchased the ride-on toy or the appropriate party. For your records, keep your original sales receipt with this manual.

Our goods come with guarantees that cannot be excluded under the Australian Consumer Law. You are entitled to a replacement or refund for a major failure and compensation for any other reasonably foreseeable loss or damage. You are also entitled to have the goods repaired or replaced if the goods fail to be acceptable quality and the failure does not amount to a major failure. For New Zealand customers, this warranty is in addition to statutory rights observed under New Zealand legislation.