

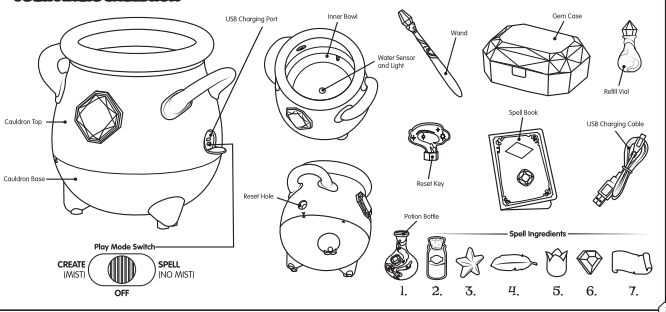


CONTENTS

Magic Cauldron	Page
Charge Cauldron before playing for the first time. Refer to "Charging Your Cauldron" page of this manual. Charge time is approximately 60-90 mins.	1
2 Ways to Play!	2
Create Mode (Mist)	3
The Magic Reveal!	4-7
Emptying Your Cauldron	8
Create Mode (Mist) - Repeat Play	9-11
Resetting Your Cauldron	12
Spell Mode (No Mist)	13
Cauldron Sleep Mode	14
Mist Refill	15
Troubleshooting - Cauldron	16
Magic Mixie	
Your Magic Mixie	17
Batteries	18
Energy Level	19
Magic	20-23
Nurturing	24
Sleeping	25
Troubleshooting - Magic Mixie	26



YOUR MAGIC CAULDRON



CHARGING YOUR CAULDRON

Your Cauldron is equipped with a **Lithium Polymer battery** that is **non-replaceable**. When the Cauldron battery is low, the red light next to the charging port will flash, and a "low battery" sound will play. All play functions will be disabled until the battery is charged. Use the USB Charging Cable to charge your Cauldron. Open the side cover on the Cauldron and plug the Micro-USB and into the charger port. Plug the USB-A end into a USB 2.0-compatible port. For best results, use a USB 2.0 charger that plugs into a wall socket. The red light next to the charger port will stay on until the battery is fully charged. Charge time is approximately 60-90 minutes. When the light turns off, take the charger out, close the side cover and continue playing with your Cauldron.

* USB Charging Cable included. Works with all standard USB Charging Adapters (not included).

BATTERY INSTRUCTIONS:

- The rechargeable batteries are only to be charged by an adult or by children at least 8 years old.
- Never leave Cauldron unattended while charging battery.
- Charge battery in an isolated area away from flammable materials.
- Disconnect USB charging cable when unit is fully charged.
- There is a risk of the batteries exploding, overheating, or igniting. Do not disassemble, modify, heat, or short circuit the battery. Do not place unit or battery in fires, leave them in hot places, or in direct sunlight.



- Do not drop or subject to strong impacts.
- Only charge the battery with the supplied USB cable.
- Only use the battery in the device supplied with the product.
- Carefully read all instructions and use the unit as directed.
- In the unlikely event of leakage or explosion use sand or a chemical fire extinguisher.
- Battery should be recycled or disposed of as per state and local guidelines.
- Charging only supported via Micro-USB cable connected to a 5V, 500mA Max charging current, DC voltage.
- The battery charger used with the electric toy should be regularly examined for damage to the supply cord, plug, enclosure or other parts, and in the event of damage, it should not be used until the damage has been repaired.
- The toy is only to be connected to equipment bearing either of the following symbols: or .

BATTERY REMOVAL CONSIDERATIONS:

- The Lithium Polymer battery is factory installed, and is not intended to be removed for the usable life of the product. The battery should only be removed by an adult when you intend to dispose of the product, and recycle the battery.
- Removal must only be performed by an adult.
- Use care to avoid cutting, puncturing, tearing, deforming, or otherwise damaging the battery housing during removal.
- Product must be turned off before attempting to remove the battery.
- Once battery is removed, place tape over exposed wire / contact points to avoid accidental short circuits.

For information on how to remove battery, visit <https://www.moosestoy.com/battery-disposal>

2 Ways To Play!

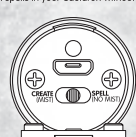
Use the Play mode switch to choose how to play!

Create Mode (Mist):

This mode will allow you to create your own Magic Mixie! Select this mode if you want to reveal your Magic Mixie again or other items placed in the Gem Case.

Spell Mode (No Mist):

Make additional spells in your Cauldron without the magical reveal.



*When purchased, unit will be set to "Create Mode".

Create Mode (Mist)

Parent/Guardian to read the following instructions while child follows along using the Spell Book.

Only add 1 Spell Ingredient for each step!

Prompting

- The Cauldron will prompt you when the light glows green and you hear "Tap, tap, tap". This means you're ready to move to the next step by tapping the rim of the Cauldron 3 times with your Wand. You can't proceed to the next step without doing this.
- When done correctly, you'll hear a celebratory sound and see the light flash quickly indicating the Cauldron has moved to the next step of your spell.

*Note: Only use approved Magic Mixie supplied materials.



ADD WATER #1

Fill the Potions Bottle once to the Fill Line and pour into the Cauldron. The Cauldron will come to life with bubbling and boiling sounds.

Only apply one full Potions Bottle of water.

When you hear the "tap tap tap" prompt, tap the rim of the Cauldron 3 times with your Wand.

SOUND DUST #2

The orchestral sound indicates it's time to add the Sound Dust.

Pour this into the Cauldron and stir with your Wand to dissolve. Tap Cauldron 3 times with your Wand when prompted.

GLIMMER STAR #3

The glimmer sound and white light indicate it's time to add the Glimmer Star.

Drop the Star into the Cauldron and stir with your Wand to dissolve. Tap Cauldron 3 times with your Wand when prompted.



MAGIC FEATHER #4

The fluttering sound and yellow/white light indicate it's time to add the Feather.

Drop this into the Cauldron and stir with your Wand to dissolve. Tap Cauldron 3 times with your Wand when prompted.

FIZZ FLOWER #5

The springtime sound and pink/blue light indicate it's time to add the Fizz Flower.

Add the Flower into the Cauldron and stir with your Wand to dissolve. Tap Cauldron 3 times with your Wand when prompted.



CRYSTAL GEM #6

The crystal sound and purple light indicate it's time to add the Crystal Gem.

Drop this into the Cauldron and stir with your Wand to break up. Tap Cauldron 3 times with your Wand when prompted.

NAMING SCROLL #7

The paper rustling sound and orange light indicate it's time to add the Naming Scroll. Name your Magic Mixie by writing their name on the paper before dropping this into the Cauldron and stirring with your Wand to dissolve. Tap Cauldron 3 times with your Wand when prompted.



The Magic Reveal!

CAUTION: Do not place your hands or Wand inside the Cauldron during this step.

A large volume of real mist will emanate from the Cauldron (this is normal). You might even hear your Magic Mixie start to make noises! After around half a minute your Magic Mixie will miraculously appear in the Cauldron! **CAUTION: The Cauldron will become very hot!** Once the sounds have stopped and the mist has cleared, you may remove your Magic Mixie from the Cauldron by rotating anti-clockwise, then pulling it out.



After around 5 "Create Mode" uses, the mist amount will diminish. Only continue to play in "Spell Mode" when this occurs. To use "Create Mode" again, refer to "Mist Refill" page of this manual.

EMPTYING YOUR CAULDRON

Before playing with your Cauldron again, empty all liquid from the previous spell!

UNSCREWING BASE

Unscrew the bottom half of the Cauldron to pour out liquid, remove any larger items or wash thoroughly.

- Do not use any chemicals or detergents.

- Do not immerse product in water. To clean the Inner Bowl wipe with damp cloth.

- We recommend this is done before starting a new spell or placing the item in storage.

- Reassemble the Cauldron by aligning the triangle indicators as shown.



This process only applies to "Create Mode".

*Ensure all packaging ties have been removed.

Create Mode (Mist)

Reveal Your Magic Mixie Again

- Align the larger hole on the Mixie's back with the Clip in the center of the Cauldron. Twist your Mixie clockwise to secure it in place (refer to image below).
- Make sure the Magic Mixie is secured firmly in place and its arms, legs, tail and wings are completely tucked within the Inner Bowl.



TIP: If the Cauldron Clip is not visible, unscrew the bottom half of the Cauldron and complete steps 1 and 2 before screwing the base of the Cauldron in place (refer to "Emptying your Cauldron" page).

Create Mode (Mist)

Using The Gem Case

- Place each item inside and clip the Gem Case shut.
- Align the Gem Case with the clip in the center of the Cauldron. Twist your Gem Case clockwise to secure it in place (refer to image below).

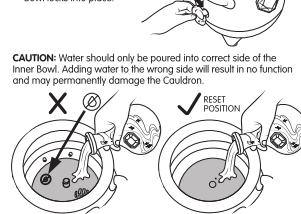


TIP: If the Cauldron Clip is not visible, unscrew the bottom half of the Cauldron and complete steps 1 and 2 before screwing the base of the Cauldron in place (refer to "Emptying your Cauldron" page).

RESETTING YOUR CAULDRON

Always ensure the Cauldron is reset before playing.

- Place the Reset Key into the Reset Hole.
- Turn clockwise until the Inner Bowl locks into place.



CAUTION: Water should only be poured into correct side of the Inner Bowl. Adding water to the wrong side will result in no function and may permanently damage the Cauldron.

Spell Mode (No Mist)

You can make your own unique potions and spells without Mist by playing in "Spell Mode".

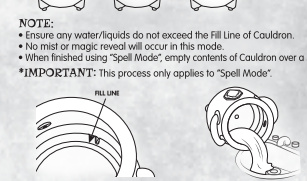
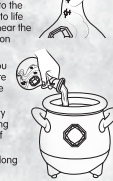
CAUTION: Ensure the Cauldron position has been reset (refer to the "Resetting your Cauldron" page of this manual).

Turn On Cauldron

Fill the Potions bottle to the Fill Line and pour into the top of your Cauldron. The Cauldron will come to life with bubbling and boiling sounds. When you hear the "tap tap tap" prompt, tap the rim of the Cauldron 3 times with your Wand.

- When the Cauldron light glows green and you hear the "tap tap tap" prompt, it means you're ready to move to the next step by tapping the rim of the Cauldron 3 times with your Wand.
- When done correctly, you'll hear a celebratory sound and see the light flash quickly indicating the Cauldron has moved to the next step of your spell.

You can keep making your spell for as long as you like!



NOTE:

- Ensure any water/liquids do not exceed the Fill Line of Cauldron.
- No mist or magic reveal will occur in this mode.
- When finished using "Spell Mode", empty contents of Cauldron over a sink!

*IMPORTANT: This process only applies to "Spell Mode".

