

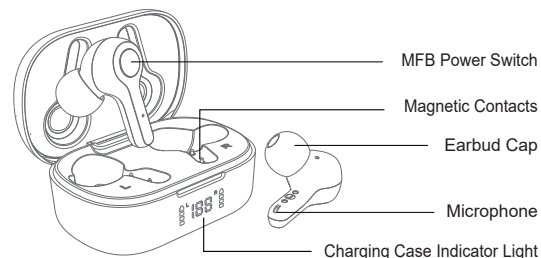


DBK02

User Manual

Thanks for using our wireless electronic products. For a good user experience, please read the manual carefully before using the products. Notice: To avoid unnecessary troubles, please do not disassemble these products by yourself, and please use the standard charger to charge.

Product overview

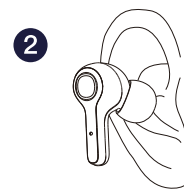


1 Choose the ear cap that suits you.



2

Make sure that the ear caps face down and put the earbuds into the ear in the angle shown as the picture on the right.



After putting on the earbuds, gently rotating the earbuds to a comfortable and secure position shown as picture 3 on the right. Now the earbuds are put on correctly!



Error demonstration

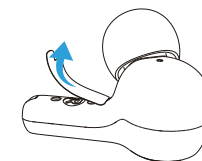
Do not wear the earbuds like the way shown as the picture on the right



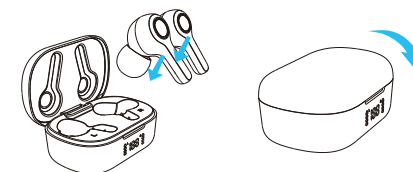
3



First time using

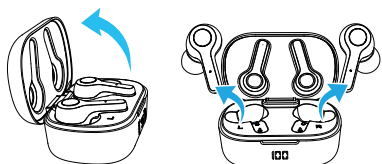


1.Tear off the insulating film.



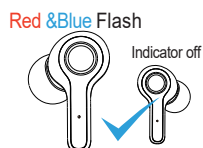
2.Put the earbuds into the charging case and close the lid to charge(the earbuds are in charging state).

4



3.Open the cover of the charging case and ,they will turn on and pair automatically and will be prepared for pairing to the phone (the indicator will turn to Red and Blue alternately).

Warm notice: If earbuds are not turned on or there is no sound come out, please put the earbud back into the charging case and close the lid again, make sure that earbuds are in the charging state before opening the lid and taking out them to use (red/blue light flash alternately)



4.The indicator of one earbud will go off and another will flash red and blue light alternately.(In pairing mode)

5



5.Turn on the Bluetooth function on your phone and search for 【DBK02】 and connect it.

Warm notice

△ If indicators of both earbuds keep flashing red and blue, Click either earbud's power switch twice. Then the indicator of one earbud will flash red and blue alternately, another will go off. (in pairing mode)

△ If you want to switch the Bluetooth connection to another device, please disable the Bluetooth function in the previously connected device OR delete the pairing name of "DBK02" from the original device. Then the pairing name of "DBK02" can be searched in new device and connected successfully.

6



Button control



•The earbuds will automatically turn on after opening the top lid of the charging case.

OR

•Press and hold the power switch for 5s then leave hold, the earbuds will turn on.(Not in the charging compartment and is in the off state)



•Put the earbuds into the charging case and close the lid, they will automatically shut down.

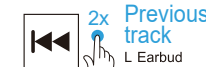
OR

•While in the non-working state, press and hold the power switch for 5s, the two earbuds will be turned off at the same time.

OR

•Automatically shut down after not connected for more than 5 minutes

7



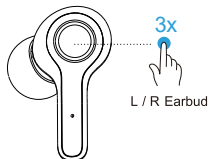
Warm notice

For any single earbud, when it is in standalone mode, you can't use it to play the previous song or decrease the volume.

8



Siri and other Voice Assistant



IOS and part of the Android users can triple click the left or right power switch to turn on the voice assistant.

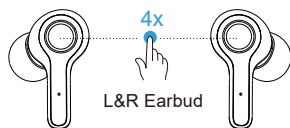


The voice assistant will be automatically activated depends in different OS in mobile system.

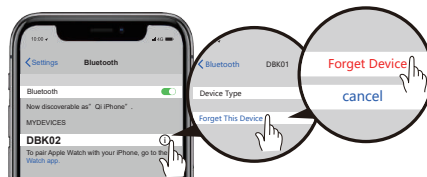
9



Restore factory setting



1. When the earbud is on with mobile phone unconnected, click the left and right power switch simultaneously four times quickly. The red and blue lights will be on for 2 seconds and then it will clear its memory and the earbuds will shut down.

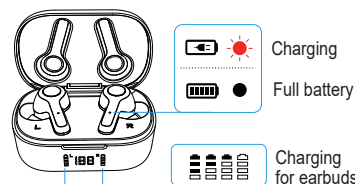


2. Please delete all paired records on the phone and search again for "DBK02" on the Bluetooth of mobile phone and reconnect.

10



Earbuds indicator

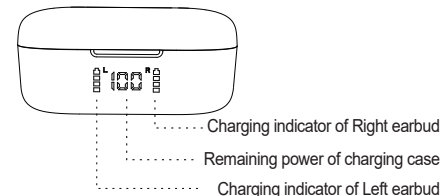


Status	Light
Turn on	Blue light flashes for 1 second Then the red and blue light flash alternately
Turn off	Red light goes out after flashing for one second
Search earbuds	Red and blue light flash alternately
The earbuds connect successfully	After successful pairing, the light of the main ear flashes alternately in red and blue
Connect with mobile phone successfully	Blue light of both earbuds flash once circularly every 6s
Music play	No light
Low battery	Red light of earbud flashes once every 6s
Charging	Red light on
Full battery	Red light off

11



Charging case indicator



Status	White light
Left earbud in charging state	"L" light on the charging case on
Left earbud in full battery state	"L" light on the charging case off
Right earbud in charging state	"R" light on the charging case on
Right earbud in full battery state	"R" light on the charging case off
Charging case in full battery state	Displays 100%
Charging for earbuds	Displays the percentage of remaining power of charging case
Charging case in low battery state	Displays 5%

12

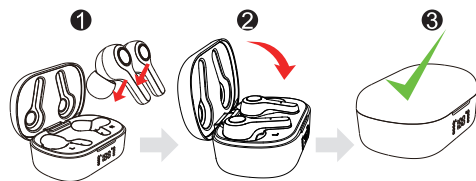


Specifications

Version	V5.2+EDR
Support	HFP,HSP,A2DP,AVRCP
Transmission distance	10m
Frequency range	2.402GHz~2.480GHz
Speaker	Φ 8.2mm*2
Impedance	16 Ω
Standby time	60 hours
Talk time	4 hours
Playing time	4 hours
Earbud battery capacity	40mAh
Fully charged time	1 hour
Charging case battery capacity	500mAh
Charging time of charging case	About 1.5 hours
Weight (single earbud)	4.0 g

13

Steps of charging for earbuds:



Put the earbud in the charging case, and the lid must be closed to charge it, and they will automatically turn off and disconnect when the charging case lid is closed.

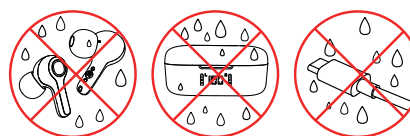
Charging case: Please use a charger with an output voltage of DC5V/1A to charge the charging case. You can also use a computer USB or other USB interface charger to charge (Must choose a charger certified by a regular manufacturer).

Notice: If the charging case is out of power, it may cause the earbuds to fail to shut down and remain connected to the phone even when they are placed in the charging case. So please remember to charge the charging case in time.

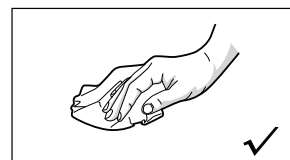
14



Attentions



Please make sure that the products are dry. If there is water droplet on the surface, please wipe it with a dry cloth before putting them back into the charging case to avoid damaging the device.



15

- Do not use corrosive liquid to clean this product.
- If it comes into contact with chemicals, please rub it with a damp cloth wet with clean water.
- Do not use this product under extreme circumstances for temperature below -10 degree Celsius or above 60 degree Celsius.
- To avoid explosion, please do not throw this product into fire.
- To avoid scratches, please do not touch the earbuds with sharp objects.
- Do not insert objects into the earbuds, otherwise it would cause damage to the internal components.
- Do not disassemble the earbud.
- Please keep regular charge to earbuds, don't leave them become empty battery status to keep their lifetime.
- Please do not charge products with power adapter over 2A current. Excessive current may cause the damage to battery.



Battery Warning !

There is a built-in lithium battery in this product. To avoid explosion, do NOT expose the product to strong sunlight, fire or throw it into fire.

16