

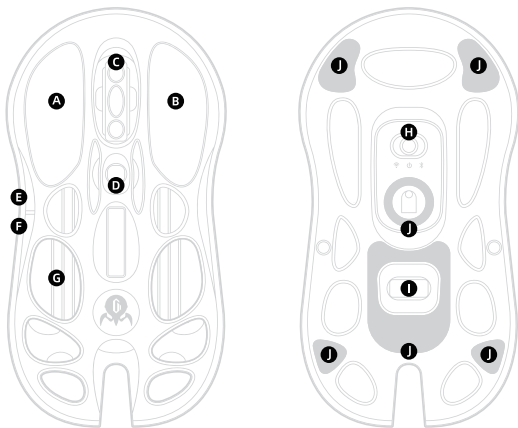
MERCURY

GravaStar Mercury M2 Wireless Gaming Mouse

User Manual



WHAT'S INSIDE



A: Left mouse button

D: DPI switch

G: Ambient light

J: Teflon foot pad

B: Right mouse button

E: Mouse button

H: Wireless/Power Off/Bluetooth

C: Scroll wheel

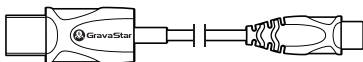
F: Mouse button

I: Wireless USB dongle compartment

USB Wireless Receiver & A/C Adapter



2.1 meters Cable (Charging + Data Transfer)



"The illustrations in the manual are for reference purposes only; the actual product may vary. The data mentioned in the manual is sourced from GravaStar; please refer to the actual usage for accurate information."

Left-click: Single click

Right-click: Single click

Scroll wheel: Single click / Scroll up and down

DPI button: Cycle through sensitivity levels

Mouse button

Mouse button

Ambient light

Front Button Descriptions

Slide to Left: 2.4G Mode

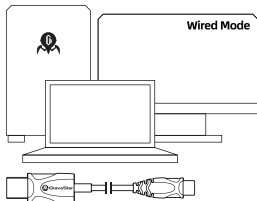
Slide to Right: Bluetooth Mode

Stay in the middle: Power ON/OFF

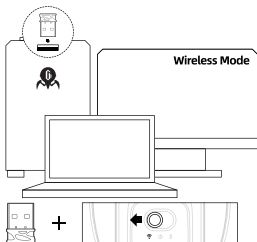
Wireless USB dongle compartment

Back Button Descriptions

GETTING STARTED



Connect the mouse to the computer using the charging cable into any USB port, and you can use the mouse in wired mode.



Connect the USB wireless receiver to the computer. Use the mode switch button and slide it to the left for 2.4G mode.

2.4G Connection: Slide the switch on the bottom to the left for wireless mode. Inserting the 1K Receiver into the computer's USB port and you can start to use the mouse. If you want to connect with the 4K Receiver, simultaneously press the left, center, and right buttons for 3 seconds on the Receiver. The blue light will slowly flash once every 1 second for 20 seconds.

Bluetooth Connection: Bluetooth Connection: Slide the switch on the bottom to the right for Bluetooth mode. The blue light of Bluetooth will flash twice every second. You can find the device name "Gravastar M2" in your Bluetooth device list.

Wired Connection: Connect the mouse with the cable. The Wired mode takes priority over other connections (2.4G/Bluetooth modes will be automatically turned off).

Low battery warning: Low battery warning: Battery level is lower than 20%.
a. Red light flashes twice every second; b. Automatically enters low battery mode and the light turns off.

Charging Indicator

0% Red color

≤30% Red color
>30% Green color with a breathing effect

100% battery
Charging by computer: Ambient light mode
Charging by power adaptor: Green light stays on

Download the mouse driver online at <https://www.gravastar.com/> to unlock all the features of it. Please note that the device can still function normally without the driver, but for a better experience with additional customization options, it's recommended to use the driver.

Customize your mouse through the driver

Configuration Function Memory: Save preset configurations for selective switching.

Button Customization: Customize all buttons except the left-click.

DPI Levels/Report Rate Customization: Edit DPI levels and report rates as desired.

Mode Selection: Choose from three performance modes - HP (High Performance), LP (Low Performance), and Corded - suitable for different usage scenarios.

LOD (Lift-Off Distance) Height Selectable: Adjust the lift-off distance height to your preference/
30-Minute Full-Power Mode: Activate full-power mode for 30 minutes / Ripple Control: Control ripple effects /
Linear Correction / Built-in smoothing correction algorithm.

Light Customization

SPECIFICATION

Product Name : GravaStar Mercury M2 Wireless Gaming Mouse

Model : GravaStar M2

TECHNICAL SPECIFICATIONS:

LIGHTSPEED wireless technology/LIGHTSYNC RGB lighting/ON-BOARD MEMORY PROFILES

Magnesium alloy shell/Exoskeleton Design/PTFE Feet

Sensor: PAW3395DM

Master Control : BK CX52850

Resolution: 26000 DPI

Max Speed (IPS) : 650

Max Acceleration : 50G

USB Reprt rate : 1K Hz (2.4G)

Bluetooth Version: V5.3

Input : 5V~350mA

Battery Capacity : 300mAh

Charging port : Type-C

Net Weight(Mouse Only) : 79g

Product Dimension: 124(L)*64.5(W)*39.5(H)mm

System Compatibility: Windows/Mac/iOS/Android

*The above specifications are for reference only, and the manufacturer reserves the right to optimize and modify product specifications without prior notice.



Warranty



One-year warranty.

Within the warranty period of the product, if any malfunctions are due to the product's own quality, users can contact the retailer with purchase receipt to receive free repair services.

These will not be covered by warranty:

- Damage caused by self-disassembly.
- Malfunctions or damage resulting from water exposure, drops, or deliberate mechanical damage.
- Malfunctions or damage caused by force majeure events.

FCC Requirement

changes or modifications not expressly approved by the party responsible for compliance could void the user's authority to operate the equipment.

This device complies with Part 15 of the FCC Rules. Operation is subject to the following two conditions:

- (1) this device may not cause harmful interference, and
- (2) this device must accept any interference received, including interference that may cause undesired operation.

Note: This equipment has been tested and found to comply with the limits for a Class B digital device pursuant to Part 15 of the FCC Rules. These limits are designed to provide reasonable protection against harmful interference in a residential installation. This equipment generates, uses, and can radiate radio frequency energy, and if not installed and used in accordance with the instructions, may cause harmful interference to radio communications. However, there is no guarantee that interference will not occur in a particular installation. If this equipment does cause harmful interference to radio or television reception, which can be determined by turning the equipment off and on, the user is encouraged to try to correct the interference by one or more of the following measures:

- Reorient or relocate the receiving antenna.
- Increase the separation between the equipment and receiver.
- Connect the equipment into an outlet on a circuit different from that to which the receiver is connected.
- Consult the dealer or an experienced radio/TV technician for help.



XXX-XXXXXX

CMIIT ID: XXXXXXXXXXXX



XXXXXXXXXXXXXXXXXX



FCC ID: XXXXX-XX



RoHS



GravaStar Family



Audio

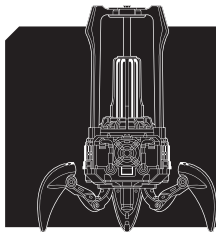


Mars Pro

Sci-fi Designed Bluetooth Speaker

G1

Zinc Alloy Shell / Dual 20W Speakers
Dynamic Light Effects / Handcrafted Collectible-level Painting
Supports Dual Speaker Networking



Supernova

Sci-fi Designed Bluetooth Speaker

G5

Sci-fi Transparent Rocket Capsule / 25W Speakers
Various RGB Lighting Effects / Biomimetic Tail Spike Handle
Supports Dual Speaker Networking

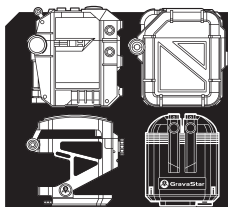


Sirius Pro

Wireless Earbuds with Knowles
balanced armatures

P9

Zinc Alloy / 4+12 Hours of Battery Life
ENC Call Noise Cancellation / IPX4 Waterproof Rating
Balanced Armature and Composite Diaphragm + Bluetooth 5.2



Sirius P5

Pioneering Wireless Earbuds with
Interchangeable Case

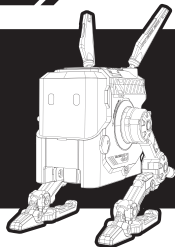
P5

8H+32H Ultra-long Battery Life / ENC Call Noise Cancellation
IPX4 Waterproof Rating / High-definition Decoding + Bluetooth 5.2

GravaStar Family

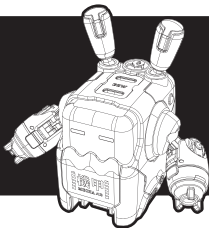


Power Adapter



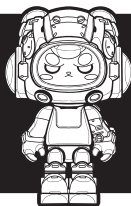
Alpha65
65W GaN Power Adapter

Adjustable Desktop Companion
65W GaN Triple Ports Fast Charging / Multi-Protocol
Compatibility / Powerful Intelligent Temperature Control
Technology / 8-Layer Safety Protection System



Delta35
35W GaN Power Adapter

Mecha Design Fast Charger / 35W GaN Dual
Ports for Simultaneous Charging / Compatible with
Multiple Protocols and Devices



KIMO & TIFA
GravaStar Art Toys



IP



www.gravastar.com



Made in China