

Redragon Tri-Mode Wireless Gaming mouse

M914-RGB User Guide

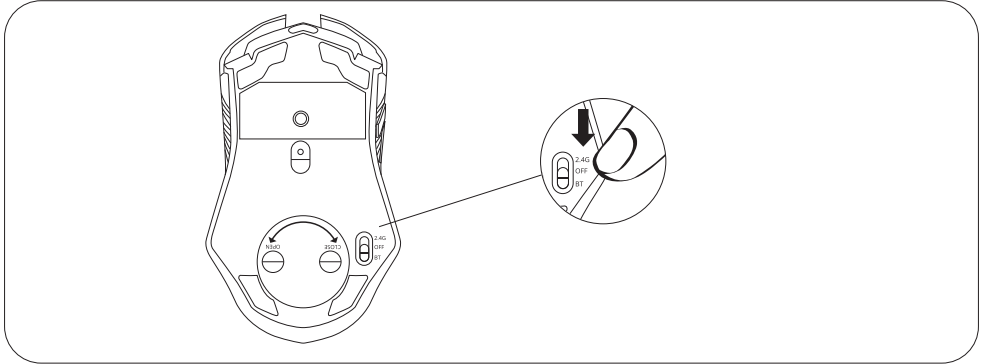
Model:M914-RGB



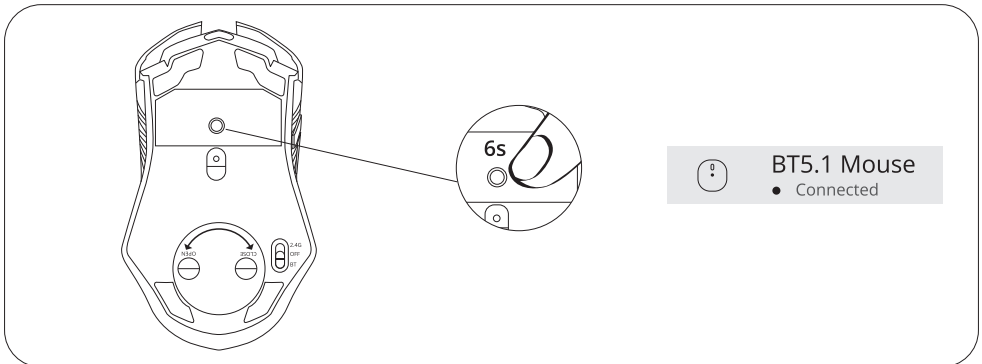
Setting up your gaming mouse

Wireless mode (Bluetooth)

- 1 Slide the power switch on bottom of the mouse to BT.



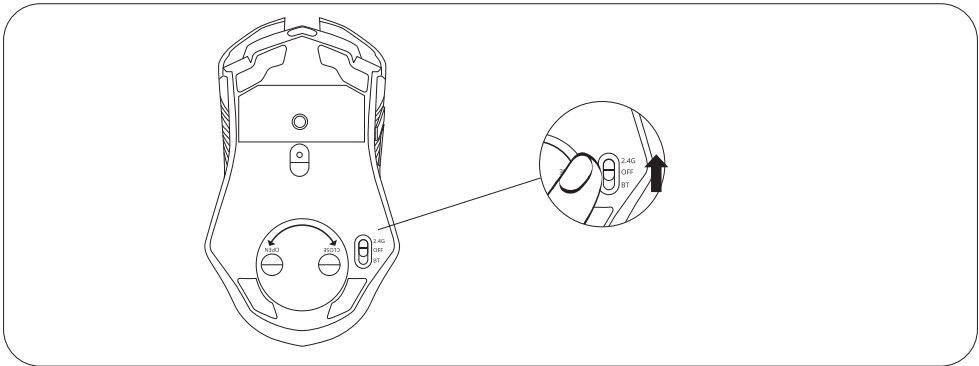
- 2 Switch on PC or tablet bluetooth, press and hold the pairing button at mouse bottom for 6 seconds, search the mouse as **BT5.1 mouse**, press it for pairing.



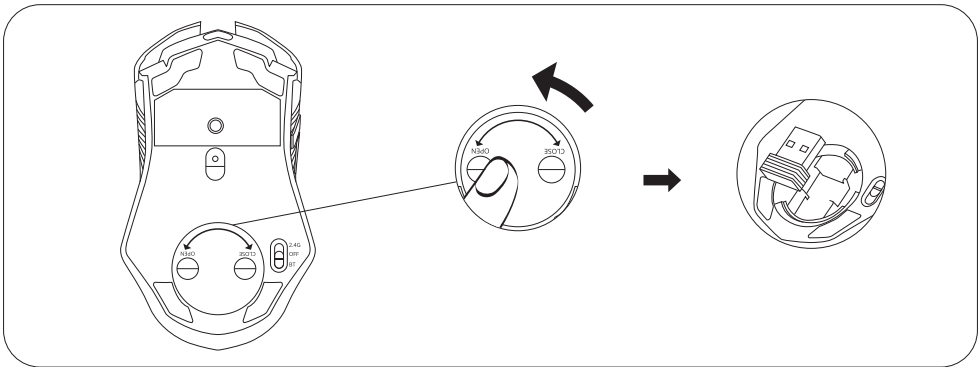
- 3 The bluetooth indicator is under the scroll wheel ,it is twinkle in blue while pairing , the indicator turn off after paired.

2.4G wireless pairing

- 1** Slide the power switch on bottom of the mouse to 2.4G.



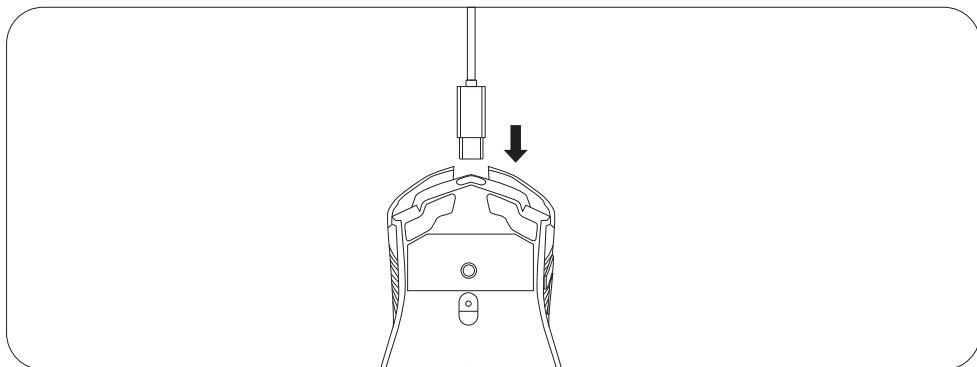
- 2** Take out the USB receiver in the package and plug it into any available USB port on your computer, please note that the USB receiver can be storage on the bottom of mouse.



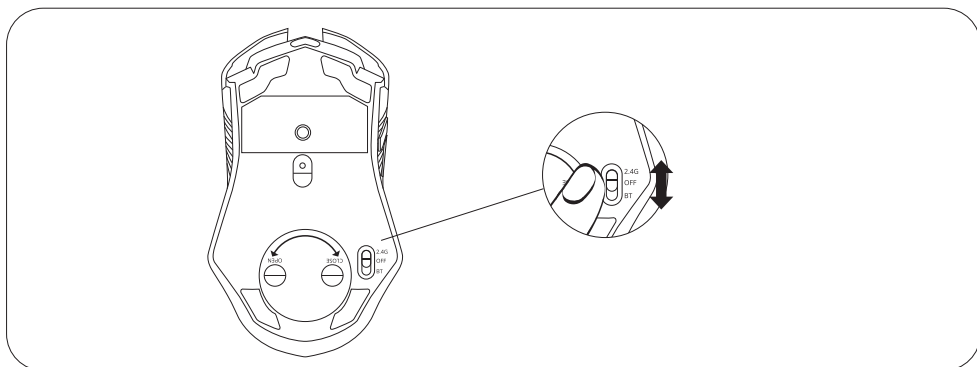
- 3** Press any button on mouse, the computer will recognize and configure the mouse automatically.

Wired Connection

- 1 Take out the USB A to USB C cable in the package and connect the mouse with your computer.



- 2 Slide the power switch on the bottom of the mouse at any mode(2.4G/OFF/BT), The mouse is under recharging whatever the mouse is at 2.4G/OFF/BT .



- 3 The computer will recognize and configure the mouse automatically at wired mode.
- 4 The mouse will be ready for use when the configuration is finished.