

User Manual of Product 1:

Dash Stand Mixer (Electric Mixer for Everyday Use): 6 Speed Stand Mixer with 3 Quart Stainless Steel Mixing Bowl, Dough Hooks & Mixer Beaters for Dressings, Frosting, Meringues & More - Aqua

User Manual of Product 2:

Dash Mini Maker Portable Grill Machine + Panini Press for Gourmet Burgers, Sandwiches, Chicken + Other On the Go Breakfast, Lunch, or Snacks with Recipe Guide - Aqua



*recipes
inside!*

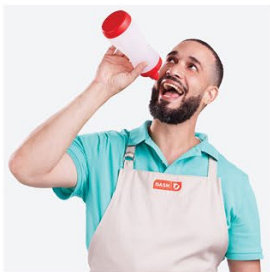


DCSM250

EVERYDAY **STAND MIXER**

Instruction Manual | Recipe Guide







EVERYDAY **STAND MIXER**

Important Safeguards.....	4-7
Parts & Features.....	8
Using Your Mixer	10-11
Tips & Tricks	12
Settings.....	13-14
Cleaning & Maintenance	15
Troubleshooting.....	16
Recipes	19-29
Customer Support	30
Warranty	31


the dash team!

IMPORTANT SAFEGUARDS

IMPORTANT SAFEGUARDS: PLEASE READ AND SAVE THIS INSTRUCTION AND CARE MANUAL.

When using electrical appliances, basic safety precautions should always be followed, including:

- Read all instructions.
 - Remove all bags and packaging from appliance before use.
 - Only use the appliance on a stable, dry surface.
 - Make sure the appliance is cleaned thoroughly before using.
 - To protect against electrical shock, do not immerse the cord, plug, or appliance in water or any other liquid. If the unit accidentally falls or gets immersed in water, unplug the appliance immediately. Do not reach into the water.
 - This appliance can be used by persons with reduced physical, sensory or mental capabilities or lack of experience or knowledge, if they have been given supervision or instruction concerning use of the appliance in a safe way and understand the hazards involved.
 - This appliance is not a toy. Do not let children use this appliance. Close supervision is necessary when any kitchen appliance is used by or near children.
 - Always be sure to unplug the appliance from the outlet prior to moving, cleaning, storage, and when not in use.
 - StoreBound shall not accept liability for damages caused by improper use of the appliance.
 - Improper use of the appliance can result in property damage or even in personal injury.
 - Turn the appliance OFF, then unplug from the outlet when not in use, before assembling or disassembling parts and before cleaning.
- To unplug, grasp the plug and pull from the outlet. Never pull from the power cord. If the Mixer begins to malfunction during use, immediately unplug the cord. Do not use or attempt to repair the appliance yourself.
- Remove beaters from mixer before washing.
 - Do not operate any appliance with a damaged cord or plug or after the appliance malfunctions or has been damaged in any manner. Return appliance to the nearest authorized service facility for examination, repair, or adjustment.
 - For maintenance other than cleaning, please contact StoreBound directly at 1-800-898-6970 from 9AM-9PM EST Monday-Friday or by email at support@bydash.com.
 - Extreme caution must be used when moving an appliance containing hot oil or other hot liquids.
 - Make sure the appliance is turned to the "0" (off) position before plugging or unplugging the cord from the wall.
 - Refrain from using attachments that are not recommended by the appliance manufacturer, as this may result in fire, electric shock, or personal injury.
 - **WARNING:** Do not use the Mixer on any setting for more than 10 minutes at a time as the motor may overheat. Allow motor to cool between consecutive uses.
 - This appliance should only be used to mix soft ingredients such as flour, cream, eggs, or creamy liquids. To avoid damaging your Mixer, do not attempt to mix hard ingredients.

IMPORTANT SAFEGUARDS

- Avoid contact with moving parts. To reduce the risk of personal injury or property damage, do not put your hands, hair, clothing near or in the Mixer during use.
- Do not remove any parts while the appliance is in use or plugged in.
- Do not leave the appliance unattended while in use.
- The use of accessory attachments not provided by the manufacturer is not recommended and may cause injuries.
- All parts and components included with the Mixer are compatible with this product only. Do not use these parts with other products.
- Do not use outdoors. This appliance is designed for household use only.
- Do not let the cord hang over the edge of the table or counter or touch hot surfaces.
- Do not place on or near a hot gas burner, electric burner, or in a heated oven.
- Do not use the appliance other than its intended use.
- If a part such as a wire or plug is damaged or the Mixer malfunctions, stop the operation immediately and consult the Troubleshooting and Warranty Service sections.
- This appliance has a polarized plug (one blade is wider than the other). To reduce the risk of electric shock, this plug will fit in a polarized outlet only one way. If the plug does not completely fit in the outlet, reverse the plug. If it still does not fit, contact a qualified electrician. Do not attempt to modify the plug in any way.
- A short power supply cord is to be provided to reduce the risk resulting from becoming entangled in or tripping over a longer cord. An extension cord may be used if care is exercised in its use. If an extension cord is used, the marked electrical rating of the extension cord should be at least as great as the electrical rating of the appliance. The extension cord should be arranged so that it will not drape over the countertop or tabletop where it can be pulled on by children or tripped over unintentionally.

HOUSEHOLD USE ONLY

IMPORTANT SAFEGUARDS: PLEASE READ AND SAVE THIS INSTRUCTION AND CARE MANUAL.

MESURES DE SÉCURITÉ IMPORTANTES

MESURES DE SÉCURITÉ IMPORTANTES: VEUILLEZ LIRE ET CONSERVER CE MANUEL D'UTILISATION.

Lors de l'utilisation d'appareils électriques, des précautions élémentaires de sécurité doivent être respectées, notamment:

- Lisez toutes les instructions.
- Retirez tous les sacs et emballages de l'appareil avant utilisation.
- Utilisez l'appareil uniquement sur une surface stable et sèche.
- Assurez-vous que l'appareil est nettoyé à fond avant de l'utiliser.
- Pour éviter les chocs électriques, ne pas plonger le cordon, les fiches, le bloc moteur ou des pièces électriques dans de l'eau ou dans d'autres liquides. Ne plongez pas les mains dans l'eau.
- Cet appareil peut être utilisé par des personnes dont les capacités physiques, sensorielles ou mentales sont réduites ou qui manquent d'expérience et de connaissances, à condition qu'elles aient reçu une supervision ou des instructions concernant l'utilisation de l'appareil en toute sécurité et qu'elles comprennent les risques encourus.
- L'appareil n'est pas un jouet. Ne laissez pas d'enfants utiliser cet appareil. Une étroite surveillance est nécessaire lorsqu'un appareil est utilisé par ou à proximité d'enfants.
- Éteignez l'appareil, puis débranchez-le de la prise lorsqu'il n'est pas utilisé, avant d'assembler ou de désassembler des pièces et avant de le nettoyer. Pour débrancher, saisissez la fiche et retirez-la de la prise. Ne tirez jamais sur le cordon d'alimentation. Si le Mixeur commence à mal fonctionner pendant son utilisation, débranchez immédiatement le cordon. N'utilisez pas ou ne tentez pas de réparer vous-même l'appareil.
- Retirez les fouets du mixeur avant le lavage.
- N'utilisez pas l'appareil si le cordon ou la fiche sont endommagés, après un dysfonctionnement ou une chute ou encore un dommage quelconque de l'appareil. Retournez l'appareil à l'établissement de service agréé le plus proche pour examen, réparation ou réglage.
- Pour tout entretien autre que le nettoyage, veuillez contacter StoreBound directement au 1-800-898-6970 de 9 h 00 à 21 h 00 HNE du lundi au vendredi ou par courriel à support@bydash.com.
- Assurez-vous que l'appareil est en position «0» (OFF) avant de débrancher le cordon du mur.
- Évitez d'utiliser des accessoires qui ne sont pas recommandés par le fabricant de l'appareil, car ils pourraient provoquer un incendie, une électrocution ou des blessures.

MESURES DE SÉCURITÉ IMPORTANTES

- **AVERTISSEMENT:** Ne pas utiliser le mixeur pendant plus de 10 minutes d'affilée car le moteur risque de surchauffer. Laissez le moteur refroidir entre deux utilisations consécutives.
- Cet appareil ne doit être utilisé que pour mélanger des ingrédients mous tels que de la farine, de la crème, des œufs ou des liquides crémeux. Pour éviter d'endommager votre Mixeur, n'essayez pas de mélanger des ingrédients durs.
- Éviter le contact avec les pièces mobiles. Pour réduire les risques de blessures et/ou de dommages à l'appareil, ne mettez pas vos mains, vos cheveux, vos vêtements ou d'autres objets à proximité ou dans le Mixeur pendant l'utilisation.
- Ne retirez aucune pièce lorsque l'appareil est en cours d'utilisation ou branché.
- Tous les composants inclus avec le Mixeur sont compatibles avec ce produit seulement. N'utilisez pas ces pièces sur d'autres produits similaires.
- Ne pas utiliser à l'extérieur. Cet appareil est conçu pour un usage domestique uniquement.
- Ne laissez pas le cordon pendre du bord de la table ou du comptoir, ni toucher des surfaces chaudes.
- Ne placez pas l'appareil sur ou à proximité d'un brûleur à gaz chaud, d'un brûleur électrique ou dans un four chauffé.
- Ne pas utiliser l'appareil autrement que pour l'usage auquel il est destiné.
- Si une pièce telle qu'un fil ou une fiche est endommagée ou si le mélangeur fonctionne mal, arrêtez immédiatement l'opération et consultez les sections Dépannage et Garantie.
- Un cordon d'alimentation court et détachable est fourni afin de réduire les risques liés à l'enchevêtrement ou à la chute d'un cordon plus long. Des cordons d'alimentation plus longs et détachables sont disponibles et peuvent être utilisés si vous les utilisez avec précaution.
- Si vous utilisez un cordon d'alimentation plus long et détachable, les caractéristiques électriques marquées du jeu de câbles doivent être au moins aussi élevées que celles de l'appareil. Le cordon doit être disposé de manière à ne pas se poser sur le comptoir ou la table où il pourrait être tiré par des enfants ou trébuché par inadvertance. Si l'appareil est du type mis à la terre, la rallonge doit être un cordon à 3 fils du type mise à la terre.

À USAGE DOMESTIQUE UNIQUEMENT
MESURES DE SÉCURITÉ IMPORTANTES: VEUILLEZ
LIRE ET CONSERVER CE MANUEL D'UTILISATION.

PARTS & FEATURES



***NOTE:** There is a Left and Right Beater and Dough Hook. They must be inserted into the Left and Right Beater Shafts respectively.



USING YOUR MIXER

Make sure the Everyday Mixer and all of its components are clean prior to assembly and use.

ATTENTION: To prevent damage to the appliance, the Beaters and Dough Hooks should **NOT** be used together.



SETTING UP YOUR MIXER

- 1 Place the Main Base on a clean and stable surface.
 - 2 Position the Mixing Bowl onto the Rotating Plate. Hold the Rotating Plate in place and turn the Mixing Bowl clockwise until it locks into place **(photo A)**.
 - 3 Hold down the Tilt Release Button and push the Motor Head upwards. Release button to lock in place **(photo B)**.
 - 4 Insert the right and left Beater accordingly into the Beater Shaft. Push the Beater until it clicks into place **(photo C)**.
- NOTE:** Beater pairs must be used together and should not be mixed with Dough Hooks.
- 5 Press the Tilt Release Button to push the Motor Head down. Your Everyday Mixer is ready for use!

USING YOUR MIXER



WARNING: Do not put hands or utensils inside the Mixing Bowl while the appliance is on and the Beaters are moving. Make sure the machine is OFF and unplugged before proceeding.

- 1 Make sure the Mixer is cleaned and placed on a dry and stable surface prior to using.
- 2 Pour ingredients into the Mixing Bowl. Do not fill the Mixing Bowl beyond capacity. If recipe requires flour, pour water and flour into the Mixing Bowl prior to turning on the Mixer.
- 3 Make sure the Speed Control is set to the Off or "0" setting first before plugging the Mixer in.
- 4 Shift the Speed Control to the required speed: 1 – 6. Refer to the Speed Settings Guide when deciding which speed is appropriate for your recipe.

TIPS & TRICKS

- Your Stand Mixer works best with small batches. Too much mix will negatively affect the performance of the Mixer.
- Certain doughs and batters may get stuck against the sides or wrapped around the Beaters. Use the Bowl Shift Lever to help solve this problem.
- The Mixing Bowl is designed specifically for this product. Do not attempt to use another mixing bowl.
- There is a Left and Right Beater and Dough Hook. They must be inserted into the Left and Right Beater Shafts respectively.
- Do not use the Mixer on any setting for more than 10 minutes at a time as the motor may overheat. Allow motor to cool between consecutive uses.
- Your Mixer should only be used to mix soft ingredients such as flour, cream, eggs, or creamy liquids. To avoid damaging your Mixer, do not attempt to mix hard ingredients.

RECIPE	SPEED	TIME	NOTES
Dough	1	1.5/2 min	Wet/dry ingredients
Banana bread	2	2 min	Wet ingredients
Sweetened whipped cream	4	4/4.25 min	Medium/stiff peaks
Meringue	6	4/5/6 min	Soft/medium/stiff peaks
Buttercream	4	2.5/2.5 min	Butter/powdered sugar

SETTINGS

BEATERS



USAGE: Only use for liquids. Great for sauces, creams, and meringues, or any other liquid mixtures. Some recipes may require you to start mixing with Beaters then switch to Dough Hooks once dry ingredients are added.

DOUGH HOOKS



USAGE: Use for non-liquid mixes. Great for butters, batters, doughs, frostings, mashed potatoes and mousse or any other non-liquid mixture. Some recipes may require you to start mixing with Beaters then switch to Dough Hooks once dry ingredients are added.

CLEANING & MAINTENANCE

Clean your Mixer thoroughly before using. Make sure to turn your Mixer to the “0” or (OFF) setting before unplugging and cleaning. Both the Mixing Bowl and Beaters are dishwasher safe. After each use, the Mixer should be cleaned properly.



WARNING: Do not submerge the motor in water or any liquid. The Main Base is not dishwasher safe.

DISASSEMBLY AND CLEANING

- 1** Turn the Mixer to the “0” (Off) setting before unplugging and cleaning.
- 2** Tilt the Motor Head upwards and press the Eject Button to remove Beaters.
- 3** Turn the Mixing Bowl counterclockwise until it detaches from the Main Base.
- 4** Wash both Mixing Bowl and Beaters in warm, soapy water.
- 5** Wipe down the Main Base with a damp dish cloth.

TROUBLESHOOTING

While Dash products are durable, you may encounter one or more of the problems listed below. If the issue is either not solved by the solutions recommended below or not included on this page, please contact our Customer Support Team at 1-800-898-6970 or support@bydash.com.

PROBLEM	SOLUTION
The Beaters are not turning.	Make sure there is nothing stuck inside the Beater Shaft. Make sure the Beater labeled with an "L" is in the left socket and the Beater labeled with an "R" is in the right socket.
There is a burning odor coming from the Mixer.	Turn off and unplug the Mixer. Allow the motor to cool down before resuming use of the appliance. This may occur when the mixture is extremely thick or the appliance has been running continuously for 10 minutes or more, causing the motor to overheat.
My mixture keeps getting stuck on the side of the bowl or wrapped around the gears.	Use the Bowl Shift Lever to help solve this problem.



*Chocolate Soufflé
on page 26!*

*Cinnamon Sugar Coffee Cake
on page 28!*



RECIPE GUIDE



Follow us!

@bydash | recipes, videos, & inspiration

@unprocessyourfood | veg & vegan-friendly meals



YOGURT PROTEIN PANCAKES

Ingredients:

- 2 eggs
- 1 cup all-purpose flour
- ¼ cup of sugar
- 1 cup whole wheat flour
- 1 ½ tsp baking soda
- 1 tsp salt
- ⅓ cup of grapeseed oil
- 1 cup of water
- 1 cup of plain yogurt

Directions:

1. Mix dry ingredients (flour, sugar, whole wheat flour, baking soda, and salt) in the Mixer on low speed.
2. Then, while the Mixer is on, add the wet ingredients (eggs, oil, water and yogurt). Mix on medium speed until well blended.
3. Cook on a hot, lightly greased griddle. When bubbles start to appear on the surface of the pancakes, flip and cook on the other side.
4. Serve with butter and maple syrup.





CHOCOLATE FUDGE CAKE

Ingredients:

2 ½ cups sugar	1 ½ tsp salt
3 cups flour	4 eggs
3 tbsp corn starch	1 cup grapeseed oil
1 cup cocoa	1 tsp vanilla
2 tsp baking powder	1 ¾ cups water
1 tsp baking soda	chocolate chips (optional)

Directions:

1. Preheat oven to 350°F. Combine all the dry ingredients and blend well with the Mixer. Add the eggs, grapeseed oil, vanilla, and water.
2. Mix batter on low speed until there are no lumps.
3. If you are a chocolate lover, you may want to add a small handful of chocolate chips to the batter. Prepare one 9" x 13" pan by coating with melted butter or cooking spray. Sprinkle a thin layer of flour over the pan, turn upside down, and lightly tap to remove any excess flour.
4. Pour cake batter into the prepared pan and bake for 25 minutes or until a toothpick comes out clean.





FLUFFY WAFFLES

Ingredients:

2 eggs
1¾ cups milk
½ cup of grapeseed oil or melted butter
½ tsp vanilla extract
2 cups all-purpose flour
1 tbsp sugar
4 tsp baking powder
¼ tsp salt

Directions:

1. Preheat waffle iron.
2. Beat eggs in Mixer on medium speed. Add the milk and grapeseed oil, or butter and vanilla extract.
3. In a separate bowl, mix together the flour, sugar, baking powder and salt. Add the dry ingredients to the wet ingredients a little at a time and mix until smooth on a medium speed.
4. Spray preheated waffle iron with non-stick cooking spray. Pour mixture into waffle iron. Cook until golden brown. Serve hot with syrup and berries.



TWICE BAKED POTATOES

Ingredients:

- | | |
|-------------------------|----------------------------------|
| 2 large Russet potatoes | ¼ cup sour cream or Greek yogurt |
| 1 tbsp olive oil | 1 cup of shredded cheddar cheese |
| 2 slices bacon, chopped | salt and coarse black pepper |
| 2 tbsp chives, chopped | |

Directions:

1. Preheat the oven to 400°F. Using a vegetable brush, scrub the potatoes clean under running water. Poke each potato several times with a fork to vent. Rub them with a little olive oil. Place directly on the middle or top rack of the oven.
2. Bake for 1 hour and 15 minutes, or until the potatoes are cooked through so that they give a little when pressed. If you are short on time, you may bake the potatoes in the microwave (10 minutes on high heat for 2 potatoes).
3. Place a small non-stick fry pan over medium-high heat. Cook chopped bacon until crispy and slightly brown. Transfer bacon bits to a paper plate to drain off excess fat.
4. Turn on broiler to high. Cut baked and slightly cooled potatoes in half and scoop out the cooked potato into the Mixing Bowl. Set potato skins aside. Add the sour cream (or Greek Yogurt), cheddar cheese, bacon, chives, salt, and pepper. Mix until smooth. For a smoother texture you may add more sour cream.
5. Stuff the hollowed-out potato skins with the mixture and place on a cookie sheet. Sprinkle a little cheese on top. Brown the potatoes under the broiler for 3 to 5 minutes.
6. Garnish with sour cream, chives and top with bacon if desired.



CHOCOLATE SOUFFLE

Ingredients:

- ¼ cup sugar
- 3 eggs, separated
- 2 oz good quality bittersweet chocolate (melted)
- pinch of salt
- ¼ tsp cream of tartar

Directions:

1. Preheat oven to 375°F. Prepare a soufflé dish by coating it with melted butter or cooking spray. Sprinkle a thin layer of sugar over the dish, turn it upside down, and lightly tap to remove any excess sugar.
2. Using the Stand Mixer, beat egg yolks with all but 1 tablespoon sugar until very light and very thick (note: the mixture will fall in a ribbon from Beaters when ready). Mix in the melted chocolate until well incorporated. Wash the Beaters well.
3. In a separate bowl, beat egg whites with salt and cream of tartar until egg whites form soft peaks. Continue to beat, gradually adding the remaining tablespoon of sugar, until the peaks are very stiff and glossy. Thoroughly stir a heaping spoonful of whites into the chocolate egg yolk mixture to lighten it. Using a rubber spatula, fold in remaining whites. Transfer mixture to prepared soufflé dish. Cover and refrigerate until you are ready to bake.
4. Bake until center is nearly set (25 to 35 minutes for a single large soufflé). Serve immediately.
5. **NOTE:** Do not open the oven during baking or the soufflé will fall.





CINNAMON SUGAR COFFEE CAKE

Ingredients:

- 1 cup sugar
- 1 $\frac{3}{4}$ cups flour
- 2 tsp baking powder
- 4 tbsp butter, cut into chunks
- 1 egg
- $\frac{1}{2}$ cup milk
- 1 tbsp sugar mixed with 1 $\frac{1}{2}$ tsp cinnamon

Directions:

1. Preheat oven to 375°F. Butter an 8" square pan or loaf pan and sprinkle with flour. Set the Mixer on low speed and combine sugar, flour, and baking powder. Cut the butter into $\frac{1}{2}$ inch chunks and add to the dry ingredients. Mix on medium speed until the batter resembles cornmeal. Add the egg and milk and blend.
2. Spoon batter into the pan. Sprinkle the cinnamon-sugar mixture over the top and bake for about 20 minutes or until a toothpick inserted into the bread comes out clean.



PIZZA DOUGH

Ingredients:

3 cups flour, divided

$\frac{3}{4}$ tsp yeast

2 tsp salt

3 tbsp olive oil

1 $\frac{1}{2}$ cups cold water

Directions:

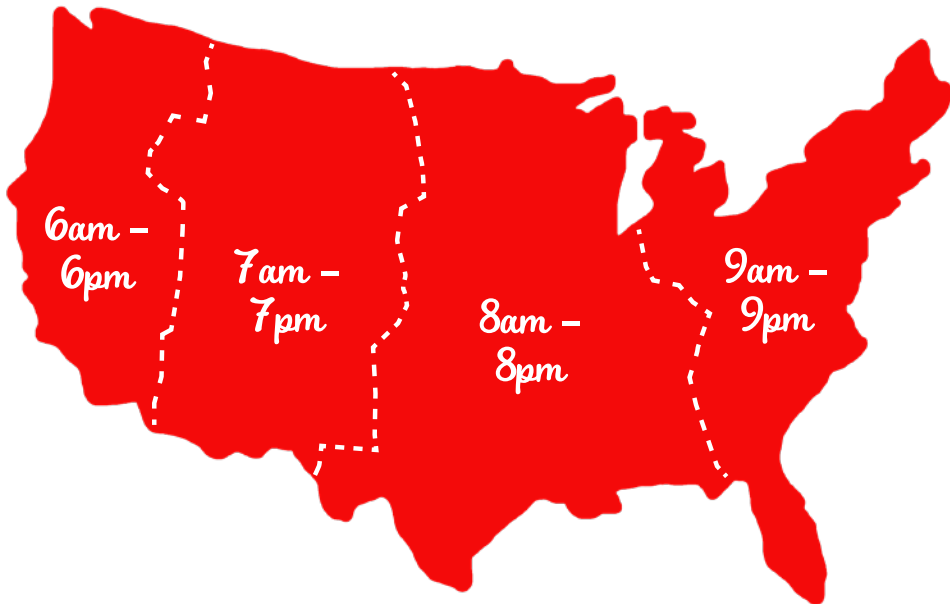
1. Mix half the flour and the rest of the dry ingredients in the Mixer, using the Beaters. Pour in the cold water while the Mixer is on low and blend for 1 minute. Add the rest of the flour and mix together.
2. Replace the beaters with the Dough Hooks and mix on medium-high for 2 1-minute sessions. Remove bowl from Mixer. Leaving the dough in the bowl, cover the Mixing Bowl with a damp paper towel and leave on counter for at least an hour.
3. Punch down dough and roll out to fit a pizza or jelly roll pan. Cover pan with parchment paper or thin later of cooking spray or olive oil. Place dough on pan and use a fork to pierce evenly across the surface of the dough.
4. Bake at 400-450°F for about 10-12 minutes or until dough is set. Remove from oven and add toppings and cheese. Return to oven and bake until cheese melts.

CUSTOMER SUPPORT

FEEL GOOD GUARANTEE™

Dash values quality and workmanship and stands behind this product with our Feel Good Guarantee™. To learn more about our commitment to quality, visit bydash.com/feelgood.

Our customer support teams in the US and Canada are at your service Monday - Friday during the times below.
Contact us at **1 (800) 898-6970** or **support@bydash.com**



Hey **Hawaii!** You can reach our customer service team from **3AM to 3PM**.
And also, **Alaska**, feel free to reach out from **5AM to 5PM**.

STOREBOUND, LLC - 1 YEAR LIMITED WARRANTY

Your StoreBound product is warranted to be free from defects in material and workmanship for a period of one (1) year from the date of the original purchase when utilized for normal and intended household use. Should any defect covered by the terms of the limited warranty be discovered within one (1) year, StoreBound, LLC will repair or replace the defective part. To process a warranty claim, contact Customer Support at 1-800-898-6970 for further assistance and instruction. A Customer Support agent will assist you by troubleshooting minor problems. If troubleshooting fails to fix the problem, a return authorization will be issued. Proof of purchase indicating the date and place of purchase is required and should accompany the return. You must also include your full name, shipping address, and telephone number. We are unable to ship returns to a PO box. StoreBound will not be responsible for delays or unprocessed claims resulting from a purchaser's failure to provide any or all of the necessary information. Freight costs must be prepaid by the purchaser.

Send all inquiries to support@bydash.com.

There are no express warranties except as listed above.

REPAIR OR REPLACEMENT AS PROVIDED UNDER THIS WARRANTY IS THE EXCLUSIVE REMEDY OF THE CUSTOMER. STOREBOUND SHALL NOT BE LIABLE FOR ANY INCIDENTAL OR CONSEQUENTIAL DAMAGES OR FOR BREACH OF ANY EXPRESS OR IMPLIED WARRANTY ON THIS PRODUCT EXCEPT TO THE EXTENT REQUIRED BY APPLICABLE LAW. ANY IMPLIED WARRANTY OF MERCHANTABILITY OR FITNESS FOR A PARTICULAR PURPOSE ON THIS PRODUCT IS LIMITED IN DURATION TO THE DURATION OF THIS WARRANTY.

Some states do not allow the exclusion or limitation of incidental or consequential damages, or limitations on how long an implied warranty lasts. Therefore, the above exclusions or limitations may not apply to you. This warranty gives you specific legal rights and you may also have other rights, which vary from state to state.

REPAIRS

DANGER! Risk of electric shock! The Dash Everyday Stand Mixer is an electrical appliance.

Do not attempt to repair the appliance yourself under any circumstances.

Contact Customer Support regarding repairs to the device.



This product has passed food safety testing in accordance with FDA guidelines.

TECHNICAL SPECIFICATIONS

Voltage 120V ~ 60Hz

Power Rating 250W

Stock# DCSM250_20170530_V18



1-800-898-6970 | @bydash | bydash.com

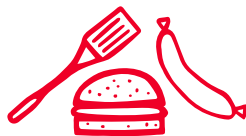


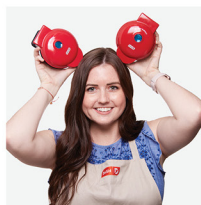
*recipes
inside!*

#DMG001

MINI MAKER **GRILL**

Instruction Manual | Recipe Guide





MINI MAKER **GRILL**

Important Safeguards.....	4-7
Parts & Features.....	8
Using Your Mini Maker Grill	10-12
Maintenance.....	13
Troubleshooting.....	14-15
Recipes.....	17-27
Customer Support	30
Warranty.....	31


the dash team!

IMPORTANT SAFEGUARDS

IMPORTANT SAFEGUARDS: PLEASE READ AND SAVE THIS INSTRUCTION AND CARE MANUAL.

When using electrical appliances, basic safety precautions should be followed, including:

- FOR HOUSEHOLD USE
- Read all instructions carefully.
- Remove all bags and packaging from appliance before use.
- Never leave appliance unattended when in use.
- Make sure the appliance is cleaned thoroughly and dried before using.
- Do not use appliance for other than intended use only. Do not use outdoors.
- **WARNING:** Hot surfaces! Never touch the Cooking Surface or Cover while appliance is in use. Always lift and lower the Cover by the Cover Handle.
- Do NOT lift the Cover so that your arm is over the Cooking Surface as it is hot and may cause injury. Lift from the side.
- To prevent the risk of fire, electric shock, or personal injury, do not put cord, plug, or appliance in or near water or other liquids. The Mini Maker Grill is NOT dishwasher safe.
- Never use abrasive cleaning agents to clean your appliance as this may damage the Mini Maker Grill and its non-stick Cooking Surface.
- Do not operate this appliance with a damaged cord, damaged plug, after the appliance malfunctions, is dropped, or is damaged in any manner. Return appliance to the nearest authorized service facility for examination, repair, or adjustment.
- DO NOT use the Mini Maker Grill near water or other liquids, with wet hands, or while standing on a wet surface.
- For maintenance other than cleaning, please contact StoreBound directly at 1-800-898-6970 from 7AM - 7PM PST Monday - Friday or by email at support@bydash.com.
- Do not use metal utensils on the Cooking Surface as this will damage the non-stick surface.
- This appliance is not intended for use by persons (including children) with reduced physical, sensory, or mental capabilities, or lack of experience and knowledge unless

they are provided with supervision and instruction concerning use of the appliance by a person responsible for their safety.

- Do not place appliance on or near a hot gas burner, hot electric burner, or in a heated oven.
- Be cautious when moving an appliance containing hot oils or other hot liquids. Refrain from using attachments that are not recommended by the appliance manufacturer, as this may result in fire, electric shock, or personal injury.
- Allow Mini Maker Grill to cool completely before moving, cleaning, or storing.
- Close supervision is necessary when any appliance is used by or near children.
- Do not let the cord touch hot surfaces or hang over the edge of tables or counters.
- Always be sure to unplug the appliance from outlet prior to moving, cleaning, storage, and when not in use.
- StoreBound shall not accept liability for damages caused by improper use of the appliance.

IMPORTANT SAFEGUARDS: PLEASE READ AND SAVE THIS INSTRUCTION AND CARE MANUAL.

IMPORTANT SAFEGUARDS

- Improper use of the Mini Maker Grill can result in property damage or even in personal injury.
- This appliance has a polarized plug (one blade is wider than the other). To reduce the risk of electric shock, this plug will fit in a polarized outlet only one way. If the plug does not completely fit in the outlet, reverse the plug. If it still does not fit, contact a qualified electrician. Do not attempt to modify the plug in any way.
- A short power supply cord is to be provided to reduce the risk resulting from becoming entangled in or tripping over a longer cord.
- An extension cord may be used if care is exercised in its use.
- If an extension cord is used, the marked electrical rating of the extension cord should be at least as great as the electrical rating of the appliance.
- If the appliance is grounded, the extension cord should be a grounding 3-wire cord. The extension cord should be arranged so that it will not drape over countertops or tabletops where it can be pulled on by children or tripped over unintentionally.

GARANTIES IMPORTANTES: VEUILLEZ LIRE ET CONSERVER CE MODE D'EMPLOI ET D'ENTRETIEN

L'utilisation d'appareils électriques nécessite de prendre des mesures de sécurité de base, y compris:

- Pour usage ménager uniquement
- Lisez attentivement toutes les instructions.
- Retirez tout sac ou emballage de l'appareil avant utilisation.
- Ne laissez jamais l'appareil sans surveillance pendant son utilisation.
- Assurez-vous que l'appareil est minutieusement nettoyé et séché avant utilisation.
- N'utilisez pas l'appareil en dehors de son utilisation prévue. Ne l'utilisez pas à l'extérieur.

- **AVERTISSEMENT:** Surfaces chaudes ! Ne touchez jamais la surface de cuisson ou le couvercle pendant l'utilisation de l'appareil. Soulevez et baissez toujours le couvercle à l'aide de sa poignée.
- NE soulevez PAS le couvercle pour que votre bras se trouve au-dessus de la surface de cuisson brûlante, car cela pourrait entraîner des blessures. Soulevez par le côté.
- Afin d'éviter les risques de feux, d'électrocution, ou de dommages corporels, ne mettez pas le cordon, la prise ou l'appareil dans ou à proximité de l'eau ou d'autres liquides. Le mini gril n'est PAS lavable en machine.
- N'utilisez jamais des produits

d'entretien abrasifs pour nettoyer l'appareil, car cela pourrait endommager le mini gril et sa surface de cuisson anti-adhérente.

- N'utilisez pas cet appareil avec un cordon ou une prise endommagé(e), ou si l'appareil est défilant, s'il est tombé ou endommagé de quelque façon.
- Pour toute inspection, réparation ou mesures importantes de protection ou ajustement, ramenez l'appareil au détaillant agréé le plus proche.
- N'utilisez PAS le mini gril à proximité de l'eau ou d'autres liquides, avec des mains mouillées, ou si vous vous tenez sur une surface mouillée.
- Pour toute question liée à l'entretien autre que le nettoyage, veuillez contacter StoreBound directement au 1-800-898-6970 de 7 à 19 heures, du lundi au vendredi, ou par courriel à support@bydash.com.
- N'utilisez pas d'ustensiles en métal sur la surface de cuisson car cela endommagerait la surface anti-adhérente.
- Cet appareil n'est pas prévu pour être utilisé par des personnes (enfants compris) ayant des capacités physiques, sensorielles

ou mentales réduites, ou manquant d'expérience et de connaissances, à moins qu'elles ne soient supervisées et instruites sur l'utilisation de cet appareil par une personne responsable de leur sécurité.

- Ne placez pas l'appareil sur ou à proximité d'un brûleur à gaz ou électrique, ou d'un four chaud.
- Faites attention lorsque vous déplacez un appareil contenant des huiles chaudes ou d'autres liquides chauds. Évitez d'utiliser des accessoires qui ne sont pas recommandés par le fabricant de l'appareil, car ils pourraient entraîner un feu, une électrocution ou un dommage corporel.
- Laissez le mini gril refroidir complètement avant tout déplacement, nettoyage ou entreposage.
- Une attention particulière doit être apportée quand l'appareil est utilisé par ou à proximité d'enfants.
- Ne laissez pas le cordon toucher des surfaces chaudes ou pendre au niveau des bords de tables ou de comptoirs.
- Assurez-vous toujours de débrancher l'appareil de la prise électrique avant tout déplacement, nettoyage ou entreposage et lorsqu'il n'est pas utilisé.
- StoreBound n'est nullement responsable des dommages causés par une mauvaise utilisation de l'appareil.

- Une mauvaise utilisation du mini gril peut entraîner des dommages matériels ou même des dommages corporels.
- Cet appareil a une fiche polarisée (un des brins est plus large que l'autre). Afin de réduire le risque d'électrocution, cette fiche ne s'insère dans la prise électrique que d'une façon. Si la fiche ne s'insère pas complètement dans la prise, inversez la fiche. Si elle ne s'insère toujours pas, contactez un électricien qualifié. N'essayez pas de modifier la fiche de quelque façon que ce soit.
- Un cordon d'alimentation court doit être fourni afin d'éviter le risque d'emmêlement ou de trébuchement lié aux cordons plus longs.
- Une rallonge peut être utilisée à condition de faire attention.
- Si une rallonge est utilisée, la puissance électrique indiquée sur la rallonge doit être au moins aussi grande que celle de l'appareil.
- Si l'appareil est connecté à la terre, la rallonge doit être un cordon tripolaire avec prise de terre. La rallonge doit être disposée de manière à ne pas reposer sur le comptoir ou sur la table où elle peut être tirée par un enfant ou source de trébuchement involontaire.

GARANTIES IMPORTANTES: VEUILLEZ LIRE ET CONSERVER CE MODE D'EMPLOI ET D'ENTRETIEN

PARTS & FEATURES



USING YOUR MINI MAKER GRILL

Before first use, remove all packaging material and thoroughly clean your Mini Maker Grill.



Never touch the Cooking Surface or Cover while appliance is in use.



DO NOT lift the Cover so that your arm is over the Cooking Surface as it is hot and may cause injury.



Always lift and lower the Cover by the Cover Handle. Lift from the side.

USING YOUR MINI MAKER GRILL



- 1 Place the appliance on a stable and dry surface. Plug the cord into a power outlet. The Indicator Light will illuminate, signaling that the Mini Maker Grill is heating up.



- 2 Once the Cooking Surface reaches the optimal cooking temperature, the Indicator Light will automatically shut off. Now, you're ready to get cooking!



- 3 Carefully lift the Cover by the Cover Handle and spray both Cooking Surfaces with a small amount of cooking spray.



- 5** Place food onto the Cooking Surface and close the Cover.



- 6** Once food is cooked to your preference, carefully remove it from the Cooking Surface with a heat-resistant nylon or silicone cooking utensil. Do not use metal utensils to remove or place food on the Cooking Surface as this will damage the non-stick surface.



- 7** When you have finished cooking, unplug your Mini Maker Grill and allow it to cool before moving or cleaning.

Always allow the appliance to cool completely before moving, cleaning, or storing. Do not submerge appliance in water or any other liquids. Never use abrasive cleaning agents to clean your appliance as this may damage the Mini Maker Grill.

In order to keep your Mini Maker Grill in pristine working order, thoroughly clean the appliance after each use. This will prevent the build-up of food or oil.

- Unplug Mini Maker Grill and allow it to cool completely.
- Using a damp, soapy cloth, wipe down the Cooking Surface and Cover. Thoroughly rinse the cloth and wipe again.
- Thoroughly dry Mini Maker Grill before storing.
- If there is food burned onto the Cooking Surface, pour on a small amount of cooking oil and let sit for 5 to 10 minutes. Scrub the surface with a sponge or soft bristled brush to dislodge food. Use a damp, soapy cloth to wipe down the Cooking Surface. Thoroughly rinse the cloth and wipe again. If any food remains, pour on more cooking oil and let it sit for a few hours, then scrub and wipe clean.
- Never use abrasive cleaning agents to clean your appliance as this may damage the Mini Maker Grill and its non-stick Cooking Surface.

While our products are durable, you may encounter one or more of the problems listed below. If the issue is either not solved by the solutions recommended below, or not included on this page, please contact our Customer Support Team at 1-800-898-6970 or support@bydash.com.

1. The light on the Mini Maker Grill keeps shutting off.

This is normal. During the cooking process, the heating element will automatically turn on and off to regulate the temperature and ensure that the Cooking Surface does not get too hot or cold. When this occurs, the Indicator Light turns on and off.

2. How do I know when the Mini Maker Grill is heated and ready to use?

When the Mini Maker Grill reaches the optimal temperature, the Indicator Light shuts off and that means you're ready to get cooking!

3. There is no On/Off Button. How do I turn the Mini Maker Grill off and on?

To turn on, simply plug in the power cord. When you're done cooking, turn off the Mini Maker Grill by unplugging it.

4. When using my Mini Maker Grill, the Cover gets very hot. Is this normal?

Yes, this is completely normal. When using your Mini Maker Grill, always lift and lower the Cover by the Cover Handle. To prevent personal injury, do NOT lift the Cover so that your arm is over the Cooking Surface as it is hot, and may cause injury. Lift from the side.

5. I am cooking meat on the Mini Maker Grill and there is juice on the Cooking Surface. What do I do?

Carefully dab the Cooking Surface around the meat with a paper towel or napkin. If there is a lot of juice, remove the food from the surface with heat-resistant plastic or silicone tongs and set aside. Then, wrap a paper towel around the tongs and use this to wipe the Cooking Surface and soak up the juices. When finished, return the food to the Mini Maker Grill and continue cooking.

6. After using my Mini Maker Grill a few times, food is starting to stick to the surface. What is happening?

There is probably a build-up of burnt food residue on the Cooking Surface. This is normal, especially when cooking with sugar. Allow the appliance to cool fully, pour on a small amount of cooking oil and let sit for 5-10 minutes. Scrub the Cooking Surface with a sponge or soft bristled brush to dislodge food. Use a damp, soapy cloth to wipe down the Cooking Surface. Rinse the cloth and wipe again. If food remains, pour on more cooking oil and let sit for a few hours, then scrub and wipe clean.

7. The Indicator Light will not turn on and the Cooking Surface is failing to heat.

- Ensure that the power cord is plugged into the power outlet.
- Check to make sure the power outlet is operating correctly.
- Determine if a power failure has occurred in your home, apartment, or building.



RECIPE GUIDE



Follow us!

@bydash | recipes, videos, & inspiration

@unprocessyourfood | veg & vegan-friendly meals



PESTO CHICKEN PANINI

Ingredients:

- 1 skinless chicken tender, pounded thin
- 2 strips jarred roasted red pepper
- 2 tbsp jarred pesto sauce
- 1 small handful arugula, washed
- 2 slices Italian bread or 1 mini ciabatta roll, cut lengthwise
- ½ tbsp butter

Directions:

Thoroughly cook the chicken on the Mini Maker Grill. Unplug the Grill, let it cool, and then clean the Cooking Surface.

Meanwhile, spread the pesto sauce on one slice of bread. Top with chicken, roasted peppers, arugula, and the other slice of bread.

Plug in the Mini Maker Grill to preheat.

Butter the outsides of the sandwich. Cook in the heated Mini Maker Grill until panini is warm and toasted.





SAUSAGE, EGG & CHEESE BREAKFAST SANDWICH

Ingredients:

- 1 English muffin
- 1 sausage patty
- 1 egg
- 1 slice cheddar or American cheese
- 2 slices tomato

Directions:

Toast English muffin in the Mini Maker Grill. Then, cook the sausage patty. Place the patty and cheese on the English muffin.

Break an egg onto the Cooking Surface and cook for one minute.

Place egg on your sandwich and top with tomato slices and the other half of the English muffin.



GRILLED CHEESE ENGLISH MUFFIN

Ingredients:

- 1 English muffin
- 2 slices cheddar or American cheese
- 2 tsp butter

Directions:

Place two slices of cheese inside the English muffin and lightly butter the outside.

Place the sandwich inside the Mini Maker Griddle and cook until the cheese is melted and the bread is toasted.



BACON CHEESEBURGER

Ingredients:

1 (3 oz.) burger patty
1 slice cheddar or American cheese
1 sesame burger bun
2 strips bacon, cooked
lettuce & tomato, to garnish
ketchup and mustard, optional

Directions:

Lightly toast burger bun one piece at a time by placing them face down on the Cooking Surface until slightly golden, and set aside. Place burger patty in heated Mini Maker Grill. Cook to desired doneness.

Right before the patty is done cooking, open the Cover and place the cheese on the patty. Let cook for a minute with the Cover open so that the cheese melts. Remove the patty with heat resistant silicone tongs.

Stack patty, bacon, lettuce, and tomato on the bottom bun. If desired, add ketchup and mustard. Cover with the top bun and serve immediately.





GRILLED APPLES

Ingredients:

1 apple, cut into round ½" thick slices
½ tsp sugar
maple syrup & cinnamon, to garnish

Directions:

Plug in Mini Maker Grill. Remove the seeds from the sliced apple. Rub both sides of each slice with a little sugar.

Grease Cooking Surface with butter.

Place one apple slice in the Mini Maker Grill and cook for about 2-3 minutes, or until the apple slice is grilled.

Repeat with the remaining apple slices. Serve with a drizzle of maple syrup and a pinch of cinnamon.



GRILLED SPICED PINEAPPLE

Ingredients:

4 slices of pineapple
½ tsp nutmeg
½ tsp cinnamon
4 scoops vanilla ice cream
mint leaves, to garnish
4 scoops vanilla ice cream
mint leaves, to garnish

Directions:

Combine the nutmeg and cinnamon. Sprinkle spices over both sides of the pineapple slices and rub into the fruit.

Grill the pineapple slices in the Mini Maker Grill. Garnish with a scoop of vanilla ice cream and a mint leaf.

MORE RECIPE IDEAS

RECIPE	INGREDIENTS	TIME
Peaches with Ice Cream	1 peach, sliced into 1" thick slices 2 tbsp brown sugar Vanilla ice cream	7 min
Grilled Portobello Caps	1 portobello mushroom cap 1 tbsp olive oil Salt & pepper	8 min
Veggie Burgers	1 veggie burger, defrosted 2 tbsp chipotle mayonnaise Serve on potato bun	7 min
Cubano Sandwich	1 roll, sliced 1 slice ham 1 slice swiss cheese 1 slice roast pork 1 slice kosher dill pickle, thinly sliced lengthwise	6 min
Grilled Pizza	¼ cup pizza dough, brushed with olive oil ¼ cup toppings (spinach, pesto sauce, mozzarella, parmesan cheese)	7 min
Blackberry Bacon Sandwich	2 slices sourdough bread, buttered 2 bacon strips 2 tbsp blackberry jam 1 slice gouda cheese	6-7 min

MORE RECIPE IDEAS

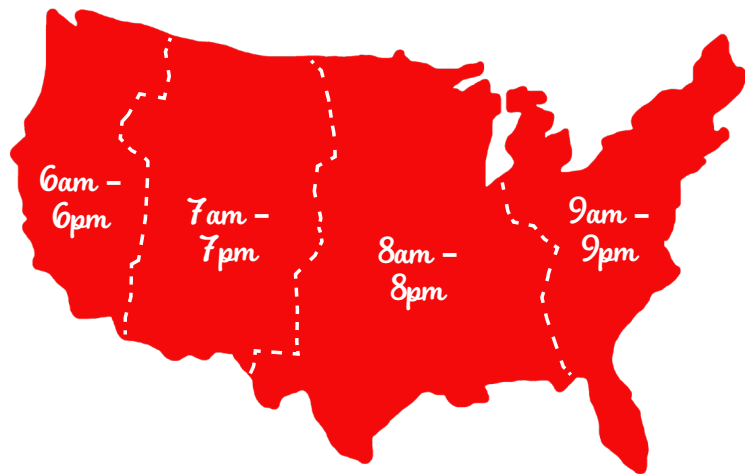
RECIPE	INGREDIENTS	TIME
Quesadilla	2 (4") tortillas (corn or flour) ¼ cup grated Mexican cheese blend 1 tbsp salsa	7-8 min
Salmon Burger	3 oz salmon burger 1 tbsp Tzatziki Sauce (Greek yogurt, grated cucumber, garlic, salt, olive oil)	7-8 min
Crab Cakes	3 oz crab cake mixture 16 oz lump crab meat 2 tbsp mayonnaise 1 egg 5 crushed crackers	6 min
Turkey Burger	3 oz turkey burger patty 1 slice swiss cheese 1 tsp honey mustard dressing Serve on multigrain toast with lettuce and tomato slice	6-7 min
S'more Biscuit	1 piece refrigerated biscuit, cut lengthwise 2 squares milk chocolate 5 mini marshmallows	5-7 min

FEEL GOOD GUARANTEE™

Dash values quality and workmanship and stands behind this product with our Feel Good Guarantee™. To learn more about our commitment to quality, visit bydash.com/feelgood.

Our customer support teams in the US and Canada are at your service Monday - Friday during the times below.

Contact us at **1 (800) 898-6970** or support@bydash.com



Hey **Hawaii!** You can reach our customer service team from **3AM to 3PM**.
And also, **Alaska**, feel free to reach out from **5AM to 5PM**.

STOREBOUND, LLC - 1 YEAR LIMITED WARRANTY

Your StoreBound product is warranted to be free from defects in material and workmanship for a period of one (1) year from the date of the original purchase when utilized for normal and intended household use. Should any defect covered by the terms of the limited warranty be discovered within one (1) year, StoreBound, LLC will repair or replace the defective part. To process a warranty claim, contact Customer Support at 1-800-898-6970 for further assistance and instruction. A Customer Support agent will assist you by troubleshooting minor problems. If troubleshooting fails to fix the problem, a return authorization will be issued. Proof of purchase indicating the date and place of purchase is required and should accompany the return. You must also include your full name, shipping address, and telephone number. We are unable to ship returns to a PO box. StoreBound will not be responsible for delays or unprocessed claims resulting from a purchaser's failure to provide any or all of the necessary information. Freight costs must be prepaid by the purchaser.

Send all inquiries to support@bydash.com.

There are no express warranties except as listed above.

REPAIR OR REPLACEMENT AS PROVIDED UNDER THIS WARRANTY IS THE EXCLUSIVE REMEDY OF THE CUSTOMER. STOREBOUND SHALL NOT BE LIABLE FOR ANY INCIDENTAL OR CONSEQUENTIAL DAMAGES OR FOR BREACH OF ANY EXPRESS OR IMPLIED WARRANTY ON THIS PRODUCT EXCEPT TO THE EXTENT REQUIRED BY APPLICABLE LAW. ANY IMPLIED WARRANTY OF MERCHANTABILITY OR FITNESS FOR A PARTICULAR PURPOSE ON THIS PRODUCT IS LIMITED IN DURATION TO THE DURATION OF THIS WARRANTY.

Some states do not allow the exclusion or limitation of incidental or consequential damages, or limitations on how long an implied warranty lasts. Therefore, the above exclusions or limitations may not apply to you. This warranty gives you specific legal rights and you may also have other rights, which vary from state to state.

REPAIRS

DANGER! Risk of electric shock! The Dash Mini Maker Grill is an electrical appliance. Do not attempt to repair the appliance yourself under any circumstances. Contact Customer Support regarding repairs to the appliance.

TECHNICAL SPECIFICATIONS

Voltage 120V ~ 60Hz

Power Rating 350W

Stock#: DMG001_20211115_V5



1-800-898-6970 | @bydash | bydash.com