



**Disney** pix+micro™  
Your pictures, your style!

**Quick Start Guide**

# Table of Contents

## Using the camera

- 1 Powering up the camera
- 2 Camera controls
- 4 Taking pictures with the camera
- 4 Deleting pictures from the camera
- 5 Photography tips

## Downloading photos

- 6 Installing the software
- 6 Downloading pictures
- 8 Changing the download directory
- 9 Deleting pictures from the downloader

## Editing photos

- 10 Launching the software
- 11 Software components
- 14 Opening your photos in the software
- 15 Editing your photos
- 16 Having fun with your photos
- 17 Saving your photos
- 18 Sharing your photos



Disney Pix Click



Disney Pix Max



Disney Elements © Disney 2006. All Rights Reserved. All brands and product names mentioned are trademarked or registered trademarks of their respective companies. Digital Blue TM © 2006 Prime Entertainment, Inc. All Rights Reserved.

## Using the Camera

### Powering up the camera

The camera is powered by one AAA alkaline battery.

**Note:** Be sure to always download your images to the computer before removing or replacing the battery or the pictures will be permanently lost.

To install the battery:

1. Open the battery compartment by sliding the door to the right.
2. Place the battery in with the (-) side facing the end of the camera with the wrist strap. Look for the end with the (-) sign.
3. Return the battery cover to its original position by closing it to the left.

**Note:** If the camera is not used for 60 seconds, it will shut itself off to save battery power. To restart the camera, press any button.



Disney Princess Movie Maker



Battery Door

### Camera controls

**Snapshot Button-** Use the Snapshot button to take digital images.

**Viewfinder-** Center your subject in the Viewfinder.

**Camera Lens-** Make sure to keep the Camera Lens clear when trying to capture images. Keep the lens clear of objects for the best pictures.

**USB Cable-** Connects the camera to your computer. Use the USB Cable when you are ready to download your images.

**Display Screen-** Indicates how many pictures you have taken.

**Delete Button-** Use the Delete button to erase images from the camera memory.

**Battery Compartment-** Open the Battery Compartment when you want to change the batteries.

**LED Indicator-** Flashes to let you know when you have taken a picture.

### Need additional help?

To launch the product Help File:  
Click Start > Programs > Disney Pix 2.0 > Disney Pix 2.0 Help

For additional product support visit our website at:  
**[www.digitalbluecorp.com](http://www.digitalbluecorp.com)** and select Customer Service.

If you are still having problems with this product please contact Customer Support at 888-800-0502.

### Sharing your photos

You can do many things with your photos.

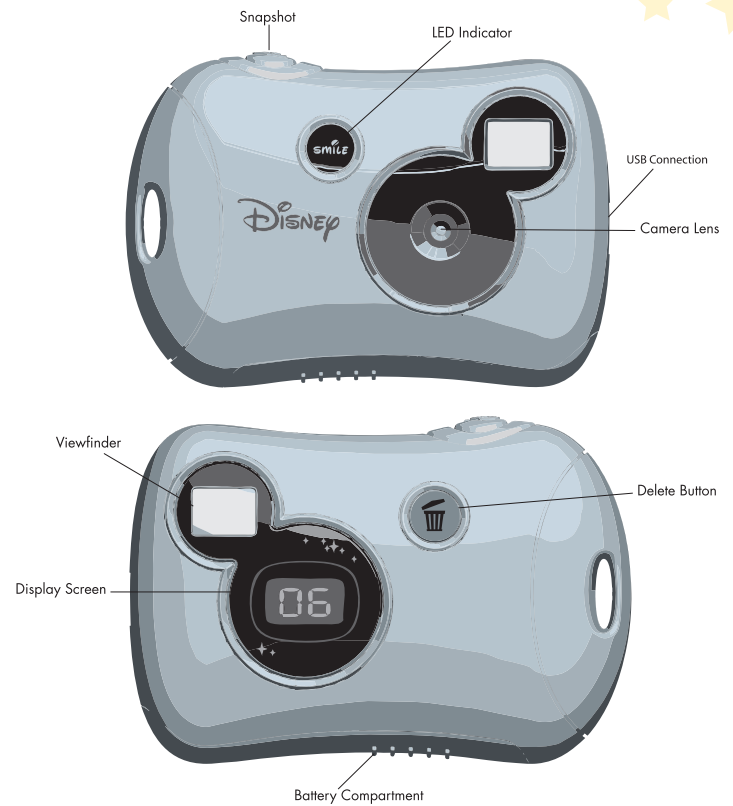


- You can put your photos into a slide show by clicking the Presentation View icon in the upper right corner of the screen.
- You can print your edited photos in several different sizes by going to the File Menu and clicking on Print.
- You can also make your photos smaller so they can be emailed to your family and friends.

To save your photos for emailing:

1. Click on the Save As button in the File Menu.
2. Click on Shrink It.
3. Click on Change Location and choose where you would like to save it your photo.
4. Click OK.
5. Type in a name for your file and click OK again.

Now you have a smaller copy of your photo file, which can be conveniently attached to your emails!



### Taking pictures with the camera

To take pictures with the camera:

1. Turn the camera on by pressing any button and waiting a moment.
2. Use the Viewfinder to locate the subject of your picture and hold the camera steady.
3. Press the Snapshot button located on the top of the camera to take the picture. The camera will beep and the LED will flash when the photo is taken.

The counter on the display will increase by one each time you take a picture. When the camera memory is full the camera will beep three times, the LED will flash three times, and the display will read FL (full).

**Note:** If the camera is not used for 60 seconds, it will shut itself off to save battery power. To restart the camera, press any button.

### Deleting pictures from the camera:

Use the Delete button on the camera to erase images from the camera memory. You can delete the last picture you took or you can delete all the photos on the camera.

To delete the last image you took, press and hold the Delete button for one second. A short beep will sound and the number on the display will decrease by one.

To delete all images off the camera, press and hold the Delete button for more than two seconds. A long beep will sound and the display will read 00.

### Saving your photos

You can save a drawing displayed on the canvas. Save allows you to save a Shrink It (e-mail size) or Full Size (regular size) photo. To pick a location to save your file:



1. Click the Save As button on the File Menu. The Save window is displayed.
2. Select the size of the drawing you would like to export:
  - Shrink It (e-mail size). Scales the photo down so it is a smaller size.
  - Full Size (regular size). Saves the photo in the original format.
3. Select the folder to which the file will be saved by clicking the Change Location button.
4. Type the name of the drawing in the white text field (a default name is automatically created by the software).
5. Click the Export button to complete the action, or click the Cancel button to cancel the Save.

**Note:** Just click Save in the File Menu to save updates to your picture after you have gone through this process.

### Having fun with your photos

There are backgrounds, stickers, windows and pictures frames you can use to embellish your photographs! To use these fun photo elements:



1. Click and drag the Desk handle located on the right side of the screen.
2. Make sure the Drawer is selected by clicking on the Mickey head in the upper left corner of the Desk panel. This drawer contains Disney elements you can use in your pictures.
3. Click on the menu at the top to see the different categories of backgrounds, stickers, windows and frames available. The menu below allows you to sort by subcategories.
4. Click and drag the photo element you would like to use and drop it on the canvas.
5. Once it has been placed on the canvas, you can move, resize, or apply some of the image editing features listed in the Edit Your Photos section.

**Note:** Click and drag the background to the canvas first, then click and drag your photo. Otherwise, the background will cover your photo.

### Photography tips

These general tips will help you improve the quality of the photos you shoot. Because this is a digital camera, it's easy to experiment and try different techniques. If you don't like the results, you can delete the pictures and try again. There are many factors that contribute to good photography; the following list provides some tips.

- For the best images, take lots of pictures to increase your chance of capturing just the right shot. Afterward, you can go back and delete the images you don't want.
- Make sure that the source of light is behind or to the side of the camera, rather than in front of the camera. The person taking pictures should not be looking directly into a light source.
- When taking a picture, hold the camera as steady as possible to prevent blurry photos. Try resting your elbows on something stable.
- If you are taking a picture of a person, try to get direct eye contact with the person to create a more engaging picture.
- When taking a photo make sure to notice what is in the background of your photo. Using a plain background will put more emphasis on the subject of your picture.
- Try using a different angle when capturing an ordinary object to make the picture more interesting.

## Installing the software

You must install the Disney Pix software to download images to your computer. Insert the Disney Pix software CD in your CD-ROM drive.

If the installation program doesn't automatically start, open My Computer and double-click the CD-ROM drive that contains the Disney Pix software. Double-click the install folder and run the Disney Pix 2.0. exe program. Follow the instructions on the screen.

## Downloading pictures

The Pix Click Downloader is a separate application that will be installed while you are installing Disney Pix. The Pix Click Downloader allows you to easily download your photos to your computer so you can edit them in Disney Pix. To Download pictures:

1. Make sure the Disney Pix software is installed on your computer.
2. Connect the camera to the PC using the supplied USB cable.



## Editing your photos

There are several options for editing your photos. The following tools can be used to enhance your photos by clicking the palettes on the left of the screen. To edit your photos use these tools:



- **Drawing Tools-** There are three different writing tools you can use to create free-form figures or add painted text to your photos.
- **Image Correction Features-** These features allow you to enhance your photos by adjusting the brightness, saturation, tint, sharpness and contrast. In addition, the image correction panel allows you to remove red eye.
- **Rotate-** This palette allows you to flip or rotate your image.
- **Stencil-** The Stencil tool makes it easy to cut out an assortment of shapes.
- **Selection Tools-** You should use the Selection tool to apply a specific effect to part of your photo or crop a selection.
- **Paint-** With the Paint tool you can fill any image, shape, or the entire canvas with a color or pattern.
- **Eraser-** Use the Eraser palette to remove parts of the canvas art.
- **Stamper-** You can add stamps to your image with the Stamper.
- **Text-** Add captions or phrases to the canvas with the Text tool.

**Note:** If you don't like an edit you have made, you can use the Undo to undo the last change.



### Opening your photos in the software:

Before you open your photos, make sure you have downloaded the pictures on the camera by following the steps in the downloading pictures section. To open your photos:



1. To open your photos, select the File Menu by clicking Open File icon in the upper left corner of the screen.



2. Select Open Snapshot from the drop down menu.



3. Choose the folder your photos were saved to, for example: the default folder is set at My Snapshots: My Documents\My Pictures\My Snapshots.

4. Select the photo you would like to edit and click Open.

To open pictures stored in another directory:



1. Click on My Pictures icon in the Library Panel.

2. Click on the Folder icon to navigate to other directories on your computer.

You can also open your images from the Desk, which is the sliding panel on the right side of the screen. To open images from the desk:



1. Click on the My Pictures icon in the Library Panel.

2. The Drawer will default to My Documents\My Pictures\My Snapshots.

3. Scroll through the images to find the photo you would like to edit.

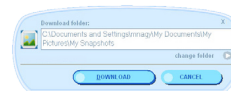
4. Once you find the photo, click and drag the image to the Canvas.



3. Launch the downloader application by clicking on the Pix Micro Downloader icon on the Desktop or by clicking on the Pix Micro downloader in the Start Menu.



When the Pix Downloader launches, the default directory will be selected. This directory is recommended for use with Disney Pix: **My Documents\My Pictures\My Snapshots.**



4. Click the Download button in the application window.

5. Close the Pix Click Downloader and launch the Disney Pix software.

### Changing the download directory

The Pix Click Downloader gives you the option of downloading your images to any folder on your computer. However, we recommend this activity for advanced users only. To change the download directory:

1. Connect the camera to the PC using the supplied USB cable.
2. Launch the Pix Click Downloader by clicking on the Pix Click Downloader shortcut on the Desktop or by clicking on the Pix Click Downloader in the Disney Pix folder in the Start Menu.
3. Click the Change Folder button.
4. In the Browse for Folder window, select the folder where you would like to save your images. Remember where you saved the images so you can find them once you open Pix.
5. Click the Download button in the application window.
6. Close the Pix Click Downloader and launch the Disney Pix Software.

**Canvas-** Place your images on the Canvas so you can edit them.

**Presentation View-** Presentation View allows you to view all the photos you have created.

**File Directory-** Displays the name of the folder where the file you are working on is being stored.

**File Name-** Displays the name of the file you are currently working on.

**File Menu-** The File Menu provides a list of functions available in the application including; New Snapshot, Open Snapshot, Save, Save As, Set As Desktop, Print, Preferences, Help, and Exit.

### Software components (cont)

Disney Pix is an easy to use photo-editing software that allows you to make your photos look better and add fun effects. This section will help you be a pro in no time.

**Photo Editing Palettes-** There are nine palettes in Disney Pix that allow you to edit your photos. Learn more about these in the Edit Your Photos section.

**Undo-** The Undo tool allows you to undo the last change you made to your photo.



**Start Over-** If you press the Start Over Icon, you will erase the entire contents of the canvas.

**Zoom-** This slider allows you to see your pictures in more detail.

**Save-** Press the save button to make sure your latest changes are saved.

**Desk-** The Desk houses the images you will use to edit your photos. The Desk is divided into two drawers: Pix Drawer and My Pictures. Click on one of the two icons in the upper left corner of the desk pane to view the following:

- Pix Drawer-** In the Pix Drawer, you can find all sorts of fun backgrounds, stickers, windows and picture frames to add to your photos.
- My Pictures-** In My Pictures, you can view images from your desktop and add them to the Canvas. My Pictures is also where you will find items you have saved.

### Deleting pictures from the downloader:

To delete pictures off the camera using the downloader interface:

1. Complete the download process following the steps in the previous section. After the pictures have been downloaded, a Delete button will appear.
2. Press the Delete button and all the images will be erased permanently off your camera.

## Launching the software

Make sure the software is installed on your computer. Launch the Disney Pix software by following these steps:

1. Double-click the Disney Pix icon on the desktop.



Or:

1. From the Windows Taskbar, click on Start and select All Programs or Programs.
2. From the Programs submenu, click on Disney Pix.
3. From the Disney Pix sub-menu click on the Disney Pix program icon.

## Software components

