

Kube Essentials

Charging Station with Alarm Clock



User Guide

Please read these instructions completely
before operating this product.

Version 1.1

TABLE OF CONTENTS

IMPORTANT SAFETY INSTRUCTIONS	2
INTRODUCTION	4
Getting to Know Your Kube Essentials.....	4
AC Connection	5
Dimmer.....	5
OPERATION	6
Setting the Time	6
Setting the Alarm Time.....	8
Turning Off the Alarm.....	9
Snooze	9
AC Outlet Reset.....	9
Threaded Security Bolt Installation - Example 1	10
Threaded Security Bolt Installation - Example 2	11
CHARGING	12
Charging Via Qi Wireless Charging (Optional)	12
Charging Via Built-in Connectors	13
Charging Via USB Ports.....	13
SPECIFICATIONS.....	14
TROUBLESHOOTING	14
KUBE SYSTEMS PRODUCTS LIMITED WARRANTY	15

IMPORTANT SAFETY INSTRUCTIONS

PRODUCT SAFETY: When used in the directed manner, this unit has been designed and manufactured to ensure your personal safety. Improper use of this product can result in potential electrical shock or fire hazards. Please read all safety and operating instructions carefully before installation and use, and keep these instructions handy for future reference.

CAUTION

**RISK OF ELECTRIC SHOCK
DO NOT OPEN**



CAUTION: To reduce the risk of electric shock do not remove cover (or back). No user serviceable parts inside. Refer servicing to qualified service personnel.

DANGEROUS VOLTAGE: The lightning flash with arrowhead, within an equilateral triangle, is intended to alert the user to the presence of uninsulated dangerous voltage within the product's enclosure that may be of sufficient magnitude to constitute a risk of electric shock to persons.



ATTENTION: The exclamation point within an equilateral triangle is intended to alert the user to the presence of important operating and maintenance (servicing) instructions in the literature accompanying the appliance.

WARNING: TO PREVENT FIRE OR SHOCK HAZARD, DO NOT EXPOSE THIS UNIT TO RAIN OR MOISTURE.



This Class B digital apparatus complies with European Union CE – EMC Directive (2004/108/EC) and European Union CE – Low Voltage Directive (2006/95/EC). This Bluetooth module is in compliance with the essential requirements and other relevant provisions of R&TTE Directive (1999/5/EC). This product is marked with the CE logo and uses radio frequency bands that are harmonized throughout the European Community.



FCC Compliance Statement: This device complies with Part 15 of the FCC rules. Operation is subjected to the following two conditions: (1) this device may not cause harmful interference, and (2) this device must accept any interference received, including interference that may cause undesired operation.

FCC WARNING

This equipment has been tested and found to comply with limits for a Class B digital device, pursuant to Part 15 of the FCC rules. These limits are designed to provide reasonable protection against harmful interference in residential installations. This equipment generates, uses, and can radiate radio frequency energy, and if not installed and used in accordance with the instructions, may cause harmful interference to radio communications. However, there is no guarantee that interference will not occur in a particular installation. If this equipment does cause interference to radio or television equipment reception, which can be determined by turning the equipment off and on, the user is encouraged to try to correct the interference by one or more of the following measures:

- Reorient or relocate the receiving Antenna.
- Move the equipment away from the receiver.
- Plug the equipment into an outlet on a circuit different from that to which the receiver is connected.
- Consult the dealer or an experienced radio/television technician for additional suggestions.

CAUTION: Any changes or modifications to this equipment not expressly approved by the party responsible for compliance could void your authority to operate the equipment.

WARNING:

STRANGULATION HAZARD: Infants have STRANGLED in power cords. Keep power cords more than 3 feet away from cribs, bassinets, play yards, and other safe sleep environments for infants.

IMPORTANT SERVICE SAFETY INSTRUCTIONS

Damages caused by non-compliance with this operating manual will void the warranty!

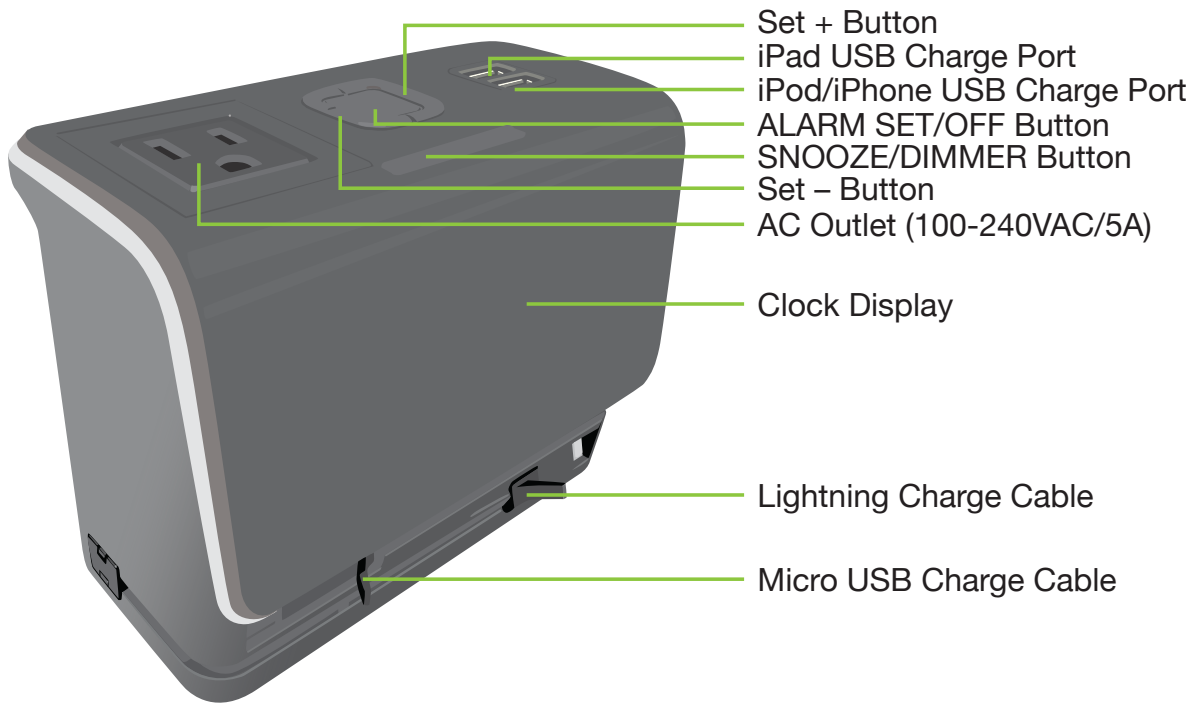
1. Read and Follow Instructions - All the safety and operating instructions should be read before the product is operated. Follow all operating instructions.
2. Retain Instructions - The safety and operating instructions should be retained for future reference.
3. Heed Warnings - Comply with all warnings on the product and in the operating instructions.
4. Power Sources - This product should be operated only from the type of power source indicated on the marking label. If you are not sure of the type of power supplied to your location, consult your video dealer or local power company. For products intended to operate from battery power, or other sources, refer to the operating instructions.
5. Overloading - Do not overload wall outlets or extension cords as this can result in the risk of fire or electric shock. Overloaded AC outlets, extension cords, frayed power cords, damaged or cracked wire insulation, and broken plugs are dangerous. They may result in a shock or fire hazard. Periodically examine the cord, and if its appearance indicates damage or deteriorated insulation, have it replaced by your service technician.
6. Power-Cord Protection - Power supply cords should be routed so that they are not likely to be walked on or pinched by items placed upon or against them. Pay particular attention to cords at plugs, convenience receptacles, and the point where they exit from the product.
7. Surge Protectors - It is highly recommended that the video equipment be connected to a surge protector. Doing so will protect the equipment from damage caused by power surges. Surge protectors should bear the UL listing mark or CSA certification mark.
8. Uninterruptible Power Supplies (UPS) - It is recommended that you connect the product to an uninterruptible power supply. An uninterruptible power supply has an internal battery that will keep the product running in the event of a power outage. Uninterruptible power supplies should bear the UL listing mark or CSA certification mark.

CAUTION: Maintain electrical safety. Power line operated equipment or accessories connected to this product should bear the UL listing mark or CSA certification mark on the accessory itself and should not be modified so as to defeat the safety features. This will help avoid any potential hazard from electrical shock or fire. If in doubt, contact qualified service personnel.

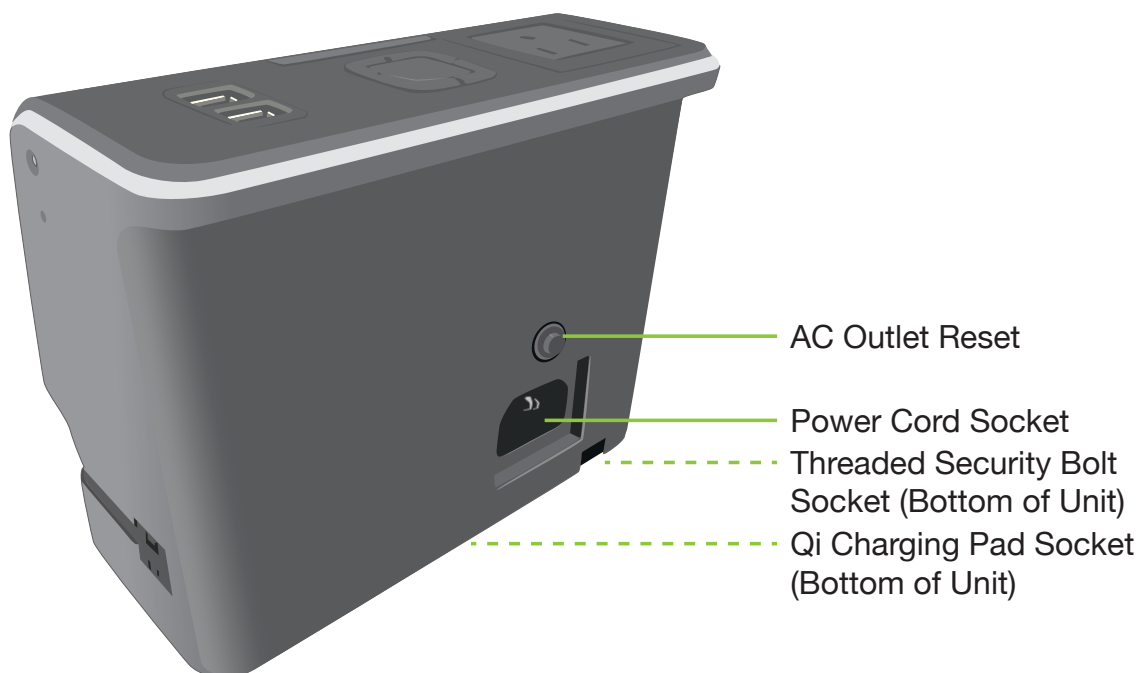
9. Ventilation - Slots and openings in the case are provided for ventilation to ensure reliable operation of the product and to protect it from overheating. These openings must not be blocked or covered. The openings should never be blocked by placing the video equipment on a bed, sofa, rug, or other similar surface. This product should never be placed near or over a radiator or heat register. This product should not be placed in a built-in installation such as a bookcase or rack unless proper ventilation is provided and the product manufacturer's instructions have been followed.
10. Attachments - Do not use attachments unless recommended by the product manufacturer as they may cause a hazard.
11. Water and Moisture - Do not use receivers or video monitors near water — for example, near a bath tub, wash bowl, kitchen sink or laundry tub, in a wet basement, near a swimming pool and the like.
12. Heat - The product should be situated away from heat sources such as radiators, heat registers, stoves, or other products (including amplifiers) that produce heat.
13. Accessories - Do not place this video equipment on an unstable cart, stand, tripod, or table. The video equipment may fall, causing serious damage to the product. Use this product only with a cart, stand, tripod, bracket, or table recommended by the manufacturer or sold with the product. Any mounting of the product should follow the manufacturer's instructions and use a mounting accessory recommended by the manufacturer.

Getting to Know Your Kube Essentials

FRONT/LEFT SIDE

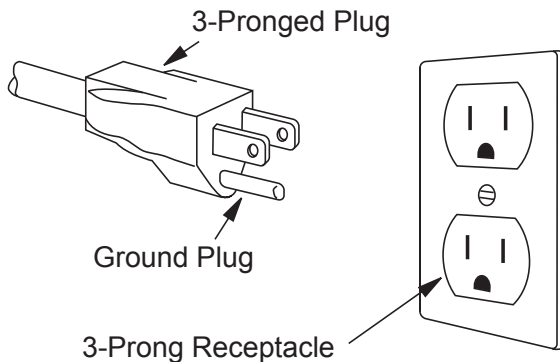


REAR/BOTTOM



AC Connection

- 1 Connect the AC Power plug to the AC jack on the rear of the unit, then plug into properly installed and grounded three prong outlet. See safety precautions in the next column.



BATTERY BACKUP: This unit comes with a battery backup that will save the time and alarm time if unplugged or power goes out.

Grounding Instructions

THIS APPLIANCE MUST BE GROUNDED.

In the event of an electrical short circuit, grounding reduces the risk of electric shock by providing an escape wire for the electric current. This unit is equipped with a cord having a grounding wire with a grounding plug. The plug must be plugged into an outlet that is properly installed and grounded.

- Plug into properly installed and grounded three-prong outlet.
- DO NOT remove ground prong.
- DO NOT use an adapter.

Power Supply

- Extension cords can be used only if:
 - (1) the marked electrical rating of the extension cord is at least as great as the electrical rating of the unit,
 - (2) the extension cord must be a grounding-type three-wire cord, and
 - (3) the longer cord should be arranged so that it will not drape over the countertop or tabletop.

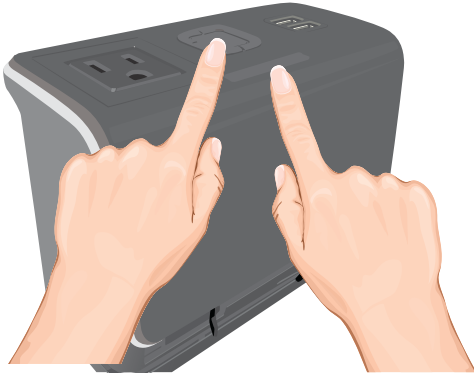
Dimmer

- 1 Press the SNOOZE/DIMMER button to set the brightness of the display to one of the four levels.



Setting the Time

- 1** To set the time, simultaneously press and hold the ALARM SET/OFF and SNOOZE/DIMMER buttons for approximately 6 seconds; "SEt" will blink in the display.



- 2** Within 2 seconds, press the Set + and – buttons to set the year. Press the ALARM SET/OFF button and the month will blink.



- 3** Within 2 seconds, press the Set + and – buttons to set the month. Press the ALARM SET/OFF button and the day will blink.



- 4** Within 2 seconds, press the Set + and – buttons to set the day. Press the ALARM SET/OFF button and the hour will blink.



Setting the Time (Continued)

5

Within 2 seconds, press the Set + and – buttons to set the hour. Make sure the correct AM/PM setting is also set. Press the ALARM SET/OFF button and the minute will blink.



6

Within 2 seconds, press the Set + and – buttons to set the minutes. Press the ALARM SET/OFF button and the country will blink.



7

Within 2 seconds, press the Set + and – buttons to set your region's Daylight Savings Time (DST) zone. Press the ALARM SET/OFF button and the snooze repeat setting will blink.



8

Within 2 seconds, press the Set + and – buttons to set the desired Snooze setting. This setting will control how many times the Snooze function can be repeated. When done do not press any button for 2 seconds and the clock will be set.



Setting the Alarm Time

- 1** Press the ALARM SET/OFF button; the alarm time will blink.



- 2** Within 2 seconds, press the Set + and – buttons to set the alarm time making sure to set the correct AM/PM.



- 3** Press the ALARM SET/OFF button and the alarm will be set and activated to turn on when the time reaches the set alarm time.



Turning Off the Alarm

- 1 When the alarm is sounding, press the ALARM SET/OFF button to turn it off. It will NOT be set for the next day and OFF will appear in the display.



- 2 To set it to turn on the following day, press the ALARM SET/OFF button again and the ALARM TIME will blink for a couple seconds and then be activated for the next day.



IMPORTANT ALARM NOTE:

- The Alarm will only go off once (single day alarm) and will not repeat daily.

Snooze

- 1 While the alarm is sounding, press the SNOOZE/DIMMER button; the alarm will turn back on automatically 10 minutes later. You can repeat the Snooze function up to three times depending on the Snooze Function setting (see page 7).



AC Outlet Reset

- 1 This unit comes equipped with an external outlet so you can plug in another device (up to 5A). If the display shows "ERR", the AC outlet on the top of the unit has been over-loaded. Press the AC Outlet Reset button to reset the outlet.



Threaded Security Bolt Installation - Example 1

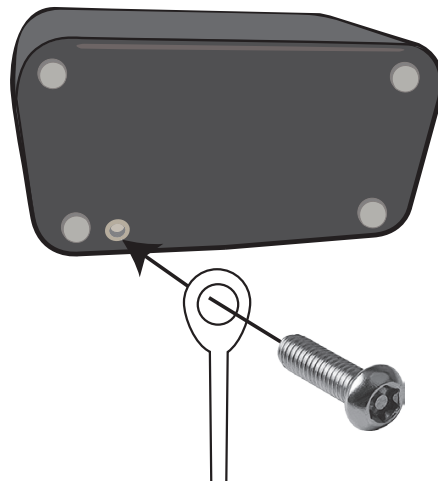
If desired, tether to a wall or piece of furniture by attaching a security cable to the Threaded Security Bolt Socket on the bottom of the unit. Note that there are many types of installations, the next two pages just show a couple of examples. Refer to the owner's manual that came with the Security Cable Kit.

NOTE: Security cable/bolt/hardware not included.

1

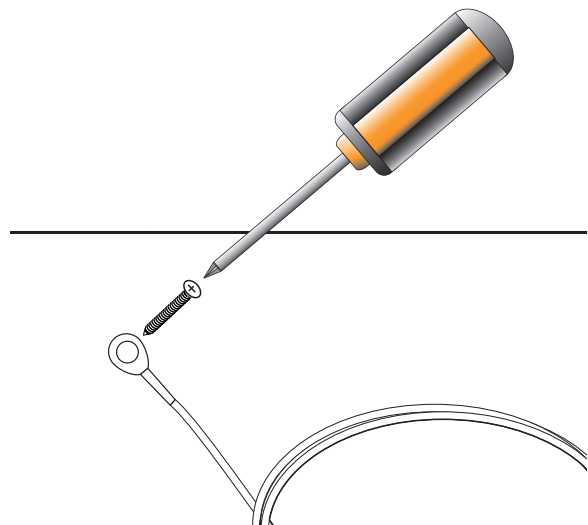
TO ATTACH USING STANDARD TETHER:

Bolt the eyelet of the cable into the bottom of the unit using a TORX Screwdriver.



2

Secure using the hardware included with the Kit (not included).

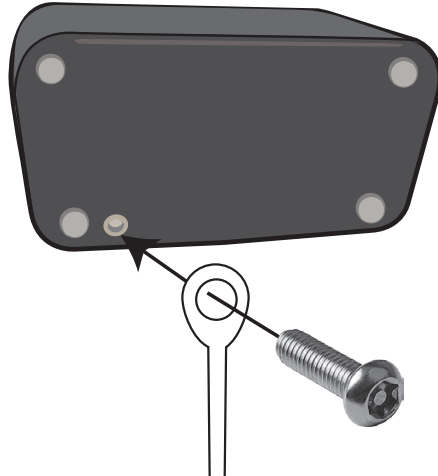


Threaded Security Bolt Installation - Example 2

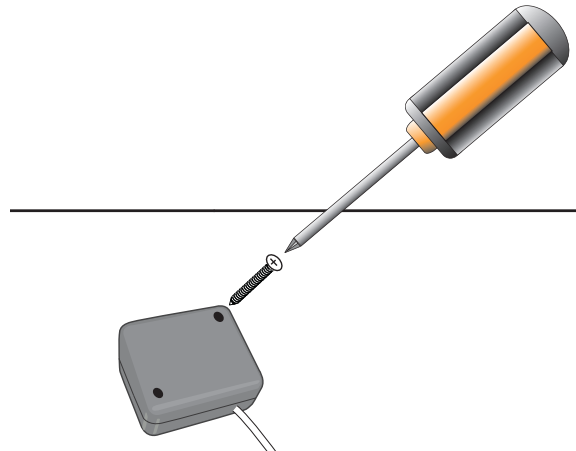
NOTE: Security cable/bolt/hardware not included.

1 TO ATTACH USING RETRACTOR WITH EYELET:

Bolt the eyelet side of the cable into the bottom of the unit using a TORX Screwdriver.



2 Secure using the hardware included with the Kit (not included).



Charging Via Qi Wireless Charging (Optional)

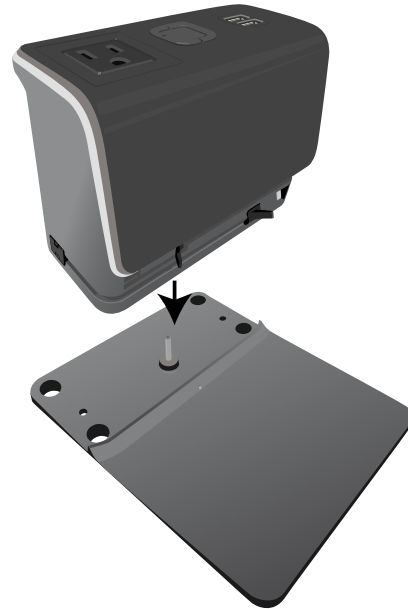
1

Designed with inductive charging capabilities, the Qi Wireless Charging Pad (Optional), for Kube Essentials, is a wireless charger for Qi-certified devices. Simply place your compatible device on top of the Qi Charging Pad and it will automatically charge your device without the hassle of plugs and cables. Follow the instructions below to learn how to use your Qi Wireless Charging Pad for Kube Essentials. Make sure your device is Qi compatible or utilizes a Qi case or other Qi charging option (both available separately), then place the unit on top of the Qi Wireless Charging Pad.

2

Remove Qi Wireless Charging Pad along with two hex screws and one hex key. Align the Qi pad's plug and the Qi Charging pad socket and insert the Kube Essentials unit on top of the pad.

Secure using the supplied hex screws and hex key.



3

To charge, simply place the Qi compatible device on the Qi Wireless Charging Pad.



Charging Via Built-in Connectors

- 1 Charge up to two devices using the built-in Charging Cables. Simply pull out the desired connector and insert it into your device.

Apple® Lightning Connector (2.1

Amp): Used for charging newer Apple devices with the Lightning jack.

Micro USB Connector (1.5 Amp):

Used for charging devices that utilize the Micro USB jack.



Charging Via USB Ports

- 1 Charge up to two additional devices using the two USB ports on the top of the unit. The iPad port outputs 2.1 Amps and the iPod/iPhone port outputs 1 Amp. Each port has its own intelligent auto-configuring USB circuit that allows any device to charge properly.

These ports are labeled, “iPod/iPhone” and “iPad” but can be used to connect most USB cables in order to accommodate different connections.



Specifications

AC Input	100 - 240 VAC
AC Output	100 - 240VAC; max 5A
USB-A Output 1	5V ~ 2.1A
USB-A Output 2	5V ~ 1A
microUSB Cable Output	5V ~ 1.5A
Lightning Cable Output.....	5V ~ 2.1A
Wireless Charge Pad Output	5W

TROUBLESHOOTING

If you have any trouble with your system, try these simple steps which should handle most common issues.

SYMPTOM: Cannot set time.

SOLUTION(s): Make sure press and hold BOTH the ALARM SET/OFF and SNOOZE DIMMER buttons for 6 seconds. See **Setting the Time** section.

SYMPTOM: The Alarm worked fine this morning but did not activate the next day.

SOLUTION(s): The alarm of Clock is a one-day alarm. This means a user will always have to turn on the alarm again after it has been activated

SYMPTOM: The Clock display does not show the time but instead displays "ERR".

SOLUTION(s): The AC Outlet on the top of the unit has been over-loaded. Press the AC Outlet Reset button on the rear of the unit to reset the outlet.

KUBE SYSTEMS, INC. KUBE SYSTEMS PRODUCTS LIMITED WARRANTY

WHAT IS COVERED AND FOR HOW LONG

If your product does not work properly because of a defect in materials or workmanship, Kube Systems, Inc. ("**Kube Systems**") products will, for the length of the period indicated on the chart below, which starts with the date of original purchase (the "**Limited Warranty Period**"), at its option either (a) repair your product with new or refurbished parts, or (b) replace it with a new or refurbished product. When a product or part is exchanged, any replacement item becomes your property and the replaced item becomes the property of Kube Systems. The decision to repair or replace will be made by Kube Systems.

PRODUCT OR PART NAME	PARTS LIMITED WARRANTY PERIOD	LABOR LIMITED WARRANTY PERIOD
KUBE ESSENTIALS	ONE (1) YEAR	ONE (1) YEAR
KUBE ESSENTIALS WIRELESS CHARGING PAD	ONE (1) YEAR	ONE (1) YEAR
KS Clock	ONE (1) YEAR	ONE (1) YEAR
ROOM PROGRAMMER	ONE (1) YEAR	ONE (1) YEAR
KS Portable	ONE (1) YEAR	ONE (1) YEAR
KS Portable CHARGING TRAY	ONE (1) YEAR	ONE (1) YEAR

During the "Parts" Limited Warranty Period, there will be no charge for parts. During the "Labor" Limited Warranty Period there will be no charge for labor. If necessary repairs are not covered by this Limited Warranty, or if a product is examined which is not in need of repair, you will be charged for the repairs or examination. You must carry-in or mail-in your product during the Limited Warranty Period. This Limited Warranty only applies to new products which were not sold "as-is," purchased and serviced either directly from Kube Systems or an authorized distributor or dealer who was authorized by Kube Systems to sell such products at the time of the original purchase.

WHO IS COVERED

This Limited Warranty is extended only to the original purchaser of a Kube Systems product, and shall not be extended to any other person or transferee.

CARRY-IN OR MAIL-IN SERVICE

If your Kube Systems product ever needs service, please return the product to your distributor or dealer. Otherwise, for carry-in or mail-in service please email us at support@kubesystems.com. You must pay any shipping charges if it is necessary to ship the product for service. Please note that shipping charges vary and may be higher for destinations outside of the United States. However, if the necessary repairs are covered under this Limited Warranty, we will pay the reasonable return shipping charges to any destination. Please be sure to save the original shipping carton(s), because a charge will be made for additional cartons. A purchase receipt is required for Limited Warranty service. Please attach a copy of your purchase receipt to this statement of Limited Warranty and put it in a safe place.

WHAT IS NOT COVERED

This Limited Warranty covers defects in material and workmanship with the following specified exceptions: (a) damage resulting from (i) improper or unreasonable use, maintenance or neglect, (ii) failure to follow operating instructions, (iii) accident, (iv) excess moisture, (v) insects, (vi) lightning, (vii) power surges, (viii) connections to improper voltage supply, (ix) unauthorized alteration or modification of original condition, (x) inadequate packing or shipping procedures, (xi) use with non-Kube Systems products, (xii) modification or adaptation to enable a Kube Systems product to operate in any particular country, (xiii) service performed by anyone who is not an authorized representative of Kube Systems, (xiv) fire, flood, earthquake or other external causes, or (xv) acts of God or force majeure; (b) loss of, damage to or corruption of stored data; (c) repair of products damaged by any modification or adaptation to enable a Kube Systems product to operate in any particular country; (d) damage to, or deterioration of, any accessory or decorative surface; (e) any Kube Systems product on which the serial number has been effaced, modified or removed; or (f) Kube Systems products purchased from unauthorized distributors or dealers. This Limited Warranty covers only actual defects within the product itself, and does not cover the cost of installation or removal from a fixed installation, normal setup or adjustments, claims based on misrepresentation by the seller or performance variations resulting from installation-related circumstances.

LIMITATION ON IMPLIED WARRANTIES

KUBE SYSTEMS SHALL NOT BE ANY KUBE SYSTEMS PRODUCT, OR ARISING OUT OF ANY BREACH OF THIS LIMITED LIABILITY FOR INCIDENTAL OR CONSEQUENTIAL DAMAGES RESULTING FROM THE USE OF WARRANTY. TO THE EXTENT PERMITTED BY APPLICABLE LAW, KUBE SYSTEMS DISCLAIMS ANY AND ALL STATUTORY OR IMPLIED WARRANTIES, WRITTEN OR ORAL, INCLUDING, WITHOUT LIMITATION, WARRANTIES OF MERCHANTABILITY, FITNESS FOR A PARTICULAR PURPOSE, TITLE, NON-INFRINGEMENT AND WARRANTIES AGAINST HIDDEN OR LATENT DEFECTS. IF KUBE SYSTEMS CANNOT LAWFULLY DISCLAIM STATUTORY OR IMPLIED WARRANTIES, THEN TO THE EXTENT PERMITTED BY LAW, ALL SUCH WARRANTIES SHALL BE LIMITED IN DURATION TO THE DURATION OF THIS LIMITED WARRANTY. THE MAXIMUM LIABILITY OF KUBE SYSTEMS SHALL NOT EXCEED THE ACTUAL PURCHASE PRICE PAID BY YOU FOR THE PRODUCT.

OTHER LEGAL RIGHTS

This Limited Warranty gives you specific legal rights, and you also may have other rights that vary from place to place. Some places do not allow limitations on implied warranties or the exclusion or limitation of incidental or consequential damages, so the above limitations or exclusions may not apply to you.

PARTS AND SERVICE WHICH ARE NOT COVERED BY THIS LIMITED WARRANTY ARE YOUR RESPONSIBILITY.

INFORMATION

If you have questions regarding the installation or operation of this product, please e-mail us at support@kubesystems.com.





<http://www.kubesystems.com>