

USER MANUAL

KC101



THANK YOU FOR YOUR PURCHASE!

(We hope you love your new Coffee Maker as much as we do)

Contact our support team by Email:

Ronghewan-Service@outlook.com

ON BEHALF OF ALL OF US HAPPY BREWING!

TABLE OF CONTENTS

Important Safeguards	1
Notes on the Plug	3
Notes on the Cord	3
Electric Power	3
Getting to Know Your Capsule Type Coffee Maker	4
Introduction	5
Before Using for the First Time	5
Brewing Instructions	6
Setting Up your Capsule Type Coffee Maker for Iced Beverages Using a Capsule	7
Setting Up your Capsule Type Coffee Maker with Water Tank Using the Ground Coffee Filter	7
Control panel	8
Care & Cleaning Instructions	8
Descaling Instructions	9
Storing Instructions	9
Warranty	10

IMPORTANT SAFEGUARDS

When using electrical appliances, basic safety precautions should always be followed including the following:

1. READ ALL INSTRUCTIONS.
2. Do not touch hot surface. Use top cover or button only.
3. Close supervision is necessary when any appliance is used by or near children. This appliance is not intended for use by persons (including children) with reduced physical, sensory, or mental capabilities, or lack of experience and knowledge, unless they are closely supervised and instructed concerning use of the appliance by a person responsible for their safety.
4. Unplug from outlet when not in use and before cleaning. Allow to cool before putting or taking off parts, and before cleaning the appliance.
5. In order to minimize the risk of property damage, never place the Coffee Maker under cabinets. Make sure the area several feet above the Coffee Maker is clear from all furniture or cabinetry.
6. Do not use outdoors.
7. To protect against fire, electrical shock and injury to persons do not immerse cord, plugs, or appliance in water or other liquids.
8. To interrupt the brew cycle, press either the button, whichever one was originally pressed to start the brewing cycle.
9. Do not operate any appliance with a damaged cord or plug, or after the appliance malfunctions, or has been damaged in any manner. Return appliance to the nearest authorized service facility for examination, repair or adjustment.

NOTE: DO NOT ATTEMPT TO REPAIR THE UNIT YOURSELF. THIS WILL VOID THE WARRANTY.

10. Stand the appliance on a table or flat surface.
11. To disconnect, remove plug from wall outlet.
12. Do not place appliance on or near a hot gas or electric burner or in a heated oven.
13. Unplug the power cord from the electrical outlet when the appliance is not in use, left unattended.
14. Do not use this appliance for other than its intended use.
15. To reduce the risk of electric shock, do not mount over a sink.
16. To reduce the risk of fire, do not mount unit over or near any portion of a heating or cooking appliance.

CAUTION: There are two sharp needles that puncture the capsules. One is located inside the capsule adaptor and the other is located on the top underside of the adaptor compartment. To avoid risk of injury do not place fingers inside either parts. Also exercise caution when cleaning the parts.

FOR HOUSEHOLD USE ONLY SAVE THESE INSTRUCTIONS ADDITIONAL IMPORTANT SAFEGUARDS

CAUTION: There is boiling water in the front tab lid section during the brew process. Do not open the lid at any time for risk of injury.

WARNING: This appliance generates heat and escaping steam during use. Proper precautions must be taken to prevent the risk of burns, fires, or other injury to persons or damage to property.

1. All users of this appliance must read and understand this Instruction Manual before operating or cleaning this appliance.
2. The cord to this appliance should be plugged into a 120V AC electrical outlet only.
3. Use water only in this appliance! Do not put any other liquids or food products in this appliance. Do not mix or add anything to the water placed in this appliance, except as instructed in the User Maintenance Instructions to clean the appliance.
4. DO NOT attempt to move an appliance containing hot liquids. Allow appliance to cool completely before moving.
5. Keep appliance at least 4 inches away from walls or other objects during operation. Do not place any objects on top of appliance while it is operating. Place the appliance on a surface that is resistant to heat.
6. If this appliance begins to malfunction during use, immediately unplug the cord. Do not use or attempt to repair the malfunctioning appliance.
7. If this appliance falls or accidentally becomes immersed in water or any other liquid, unplug it immediately. Do not reach into the water! Do not use this appliance after it has fallen into or has become immersed in water.
8. The appliance must be left to cool down sufficiently before adding more water to avoid exposure to steam.
9. Always use fresh, cool water in your appliance. Warm water or other liquids, except as listed in cleaning section, may cause damage to the appliance.

NOTES ON THE PLUG

This appliance has a polarized plug (one blade is wider than the other). To reduce the risk of electric shock, this plug will fit in a polarized outlet only one way.

If the plug does not fit fully into the outlet, reverse the plug. If it still does not fit, contact a qualified electrician. Do not modify the plug in any way.

NOTES ON THE CORD

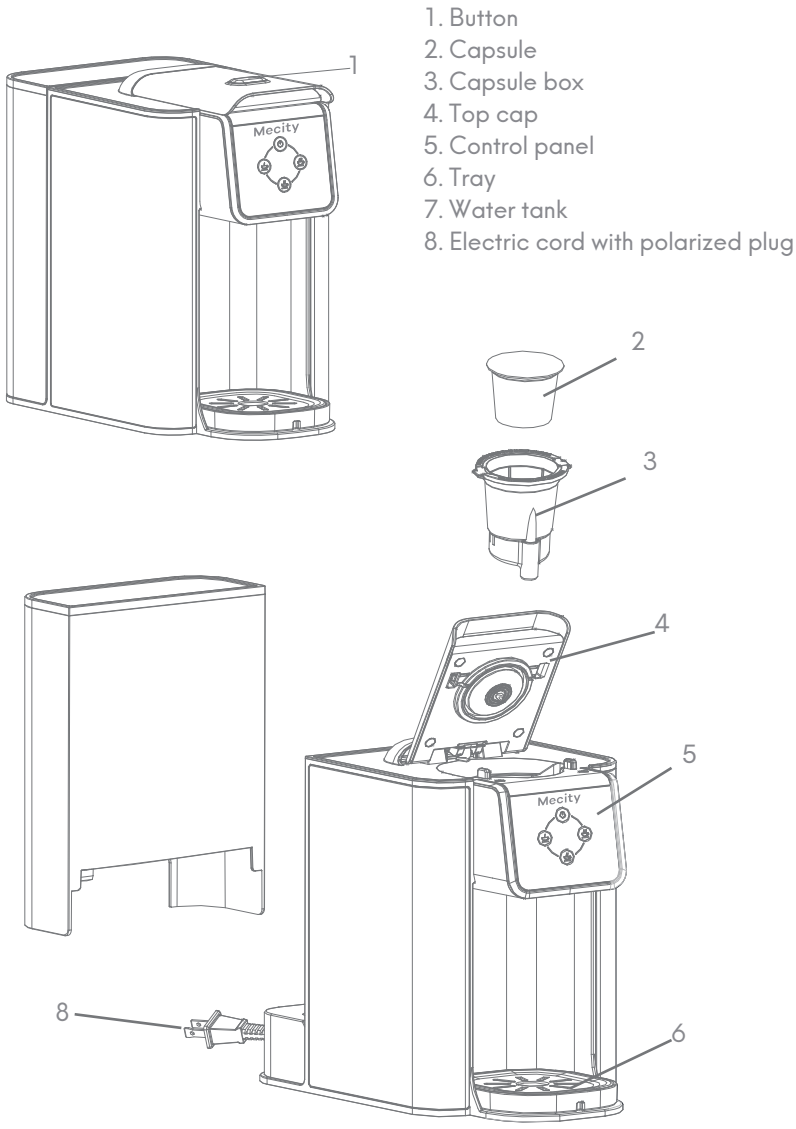
1. A short power-supply cord (or detachable power-supply cord) is to be provided to reduce risks resulting from becoming entangled in or tripping over a longer cord.
2. Longer detachable power-supply cords or extension cords are available and may be used if care is exercised in their use.
3. If a long detachable power-supply cord or extension cord is used:
4. The marked electrical rating of the detachable power-supply cord or extension cord should be at least as great as the electrical rating of the appliance;
5. If the appliance is of the grounded type, the extension cord should be a grounding-type 3-wire cord;
6. The longer cord should be arranged so that it will not drape over the counter top or table top where it can be pulled on by children or tripped over.

ELECTRIC POWER

If the electrical circuit is overloaded with other appliances, your appliance may not operate properly. It should be operated on a separate electrical circuit from other appliances.

Getting To Know Your Capsule Type Coffee Maker

* Product may vary slightly from illustration



- 1. Button
- 2. Capsule
- 3. Capsule box
- 4. Top cap
- 5. Control panel
- 6. Tray
- 7. Water tank
- 8. Electric cord with polarized plug

Introduction

- This Coffee Maker uses a pressurized system to brew a perfect single hot beverage.
- The drip tray accommodates most cup sizes, mugs or tumblers.
- Use the ground coffee adaptor (included) to create special blends of your favorite coffee. For added personalization, add a dash of your favorite spice, from cinnamon, orange peel, cardamom or vanilla bean to name a few.
- Using the reusable ground coffee adaptor is an environmentally-friendly choice that will also save you money!

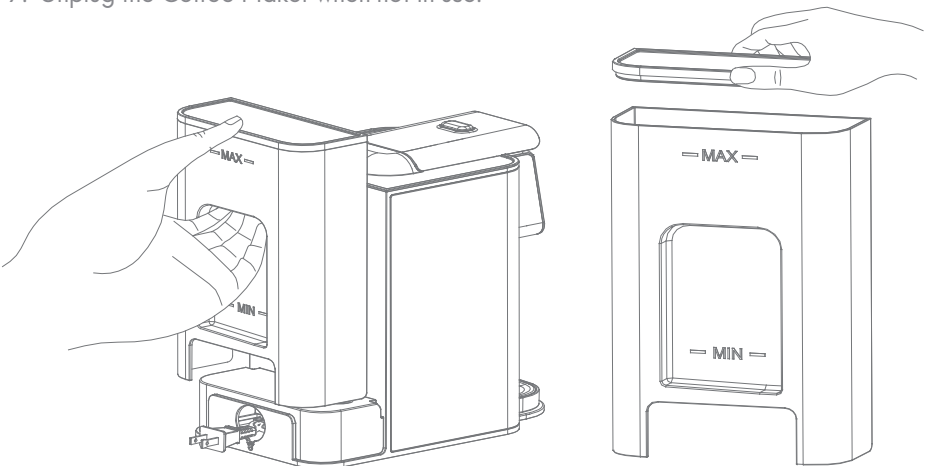
Before Using for the First Time

CAUTION: To protect against electrical shock, do not immerse the Coffee Maker or allow the power cord to come into contact with water or other liquids.

1. Remove all packing material and labels from the inside and outside of the Coffee Maker. Place the unit on a flat, clean surface. Make sure to remove three adapters from the inner packaging.
2. Before use, thoroughly clean all adapters with warm soapy water.
3. To clean the inside of the unit, it is recommended to brew a large cup.
4. Remove the lid and fill the water tank with cold water past the MIN indicator line and ensure water level is below the MAX.
5. Put the lid back and put the water tank back into place. Place down firmly to make sure it is securely in place.

NOTE: Do not add any filter for this initial cleaning.

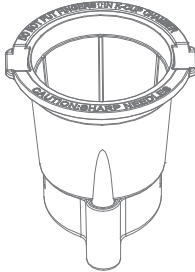
6. To select the brew size press either the small cup (6oz), medium cup (8oz) or large cup (10oz) button.
7. Unplug the Coffee Maker when not in use.



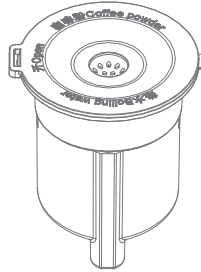
Brewing Instructions

This is a multifunctional low-pressure coffee machine that supports the use of American K- CUP capsules, coffee powder and tea.
Each filter is individually matched with different drinks, please use the correct filter in brewing your beverage.
The coffee powder filter and tea filter may be damaged if they are mix used.

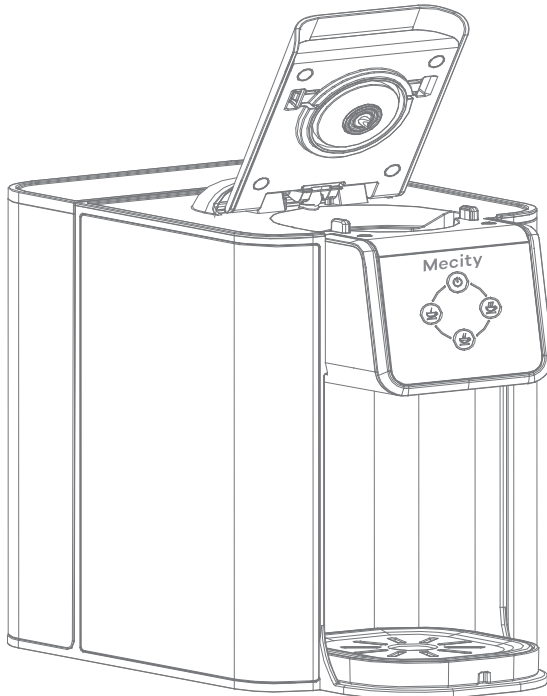
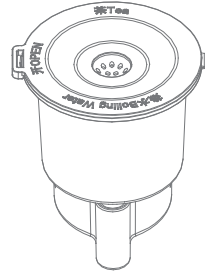
Capsule



Powder



Tea box



Setting Up your Capsule Type Coffee Maker for Iced Beverages Using a Capsule:

1. Use K-Cup® capsule with a stronger flavour.
2. Use a tall cup/tumbler filled with ice cubes.

Setting Up your Capsule Type Coffee Maker with Water Tank Using the Ground Coffee Filter:

The ground coffee filter allows you to create your own favorite blend of coffee. Personalize your blends by adding a dash of cinnamon, orange peel, cardamom or vanilla bean for flavoring, to name a few options.

WARNING: To avoid damage to your Coffee Maker, never operate your Coffee Maker when the water tank is empty.

1. Unplug and remove the water tank from the base of the unit.
2. Remove the lid and fill with cold water.

IMPORTANT: For optimal flavor, distilled or filtered water is preferred.

3. Put the lid back and put the water tank back into place. Place down firmly to make sure it is securely in place.
4. Place the empty cup, mug in position on the drip tray cover. The suggested height of the cups is between 5.1 inch to 5.7 inch, after removed the drip tray, a cup max to 6.3 inch could fit in.
5. Choose the capsule filter. Add the capsule of your choice into the filter. Press down on the capsule until it is flush with the filter. You will hear a pierce as the needle penetrates the capsule.
6. With the handle facing front, place the capsule filter into the filter compartment. Slide the filter handle in to the grooves at the front of the Coffee Maker.
7. Press the filter compartment's lid down firmly. An audible click can be heard as the lid is locked firmly into position, and the top of the capsule will be punctured.
8. Plug the Coffee Maker into a 120V AC electrical wall outlet
9. To select the brew size press either the 6-oz, 10-oz or 15-oz button.
10. The light on the selected button size will begin to flash as the Coffee Maker begins heating the water.
11. The pump will then activate and coffee will begin to stream through the nozzle.
12. At the end of the cycle, the Coffee Maker and all indicator light will automatically turn OFF after 10 minutes.
13. Allow unit to cool before removing the used capsule to discard.
14. Unplug the Coffee Maker when not in use.

Control panel

Control panel function buttons: see the picture



Power switch



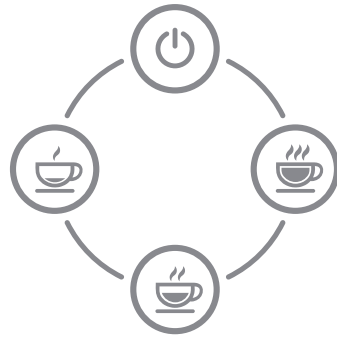
Small cup, 6OZ



Medium cup, 8OZ



Large cup, 10OZ



Care & Cleaning Instructions

1. Always make sure Coffee Maker is unplugged and the drip tray and cover are cool before removing from the base.
2. Rinse drip tray and cover and replace in the Coffee Maker base.
3. Press the filter compartment's front lid to unlock and lift the lid.
4. Remove the used capsule from the capsule filter and discard. Rinse the capsule filter in warm water before each use.
5. When using the reusable ground coffee adaptor, discard the used coffee. Wash filter in warm, soapy water, to remove all coffee grinds. Rinse well.

NOTE:

Both the capsule and the ground coffee filters are top rack dishwasher safe.

6. Use a damp paper towel or sponge to completely remove any residue from the filter compartment.
7. Wipe the exterior of the Coffee Maker with a damp cloth to remove superficial stains. For stubborn stains, use a nylon or plastic pad with a non-abrasive cleanser.
8. Do not use metal scouring pads or abrasive cleansers.

Descaling Instructions

After the machine works for 180 cycles, the middle cup and the power indicator light flash at the same time (0.5s/0.5s), which is to remind the user to descale (the water tank is filled with descaling solvent with -MAX- water level). After the machine enters the working mode, press the middle button, and the middle button indicator light flashes. After working the middle button, the machine will continue to return to the state that the middle button and the power indicator light flash at the same time. After 6 consecutive operations, the machine will enter the standby state; (You can't press any key to pause during descaling, but you must finish it six times). If there is no water, it will enter the water shortage mode.

1. Fill water tank with 1 part white vinegar (12-oz.) to 12 parts cold water (36-oz.).
2. Place tea filter.
3. Place an empty tumbler in position on the drip tray cover
4. Unplug the Coffee Maker when not in use.
5. Dry parts thoroughly. Wipe the Coffee Maker's exterior with a dry cloth

Storing Instructions

1. Unplug unit and allow to cool.
2. Never wrap cord tightly around the appliance. Do not put any stress on the cord where it enters the unit, as it could cause the cord to fray and break.
3. Store one clean filter in the Coffee Maker's filter compartment.
4. Store the other filter with the unit.
5. Store the Coffee Maker in a cool, dry place.
6. Never store unit while it is still plugged in.

Warranty

MECITY Inc. hereby warrants that for a period of ONE YEARS from the date of purchase, this product will be free from mechanical defects in material and workmanship, and for 90 days in respect to non-mechanical parts. At its sole discretion, MECITY Inc. will either repair or replace the product found to be defective, or issue a refund on the product during the warranty period.

The warranty is only valid for the original retail purchaser from the date of initial retail purchase and is not transferable. Keep the original sales receipt, as proof of purchase is required to obtain warranty validation. Retail stores selling this product do not have the right to alter, modify, or in any way revise the terms and conditions of the warranty.

EXCLUSIONS:

The warranty does not cover normal wear of parts or damage resulting from any of the following: negligent use of the product, use of improper voltage or current, improper routine maintenance, use contrary to the operating instructions, disassembly, repair, or alteration by anyone other than qualified MECITY Inc. personnel. Also, the warranty does not cover Acts of God such as fire, floods, hurricanes, or tornadoes.

MECITY Inc. shall not be liable for any incidental or consequential damages caused by the breach of any express or implied warranty. Apart from the extent prohibited by applicable law, any implied warranty of merchantability or fitness for a particular purpose is limited in time to the duration of the warranty. Some states, provinces or jurisdictions do not allow the exclusion or limitation of incidental or consequential damages, or limitations on how long an implied warranty lasts, and therefore, the above exclusions or limitations may not apply to you. The warranty covers specific legal rights which may vary by state, province and/or jurisdiction.

HOW TO OBTAIN WARRANTY SERVICE:

You need to contact Customer Service at our service mail: Ronghewan-Service@outlook.com.

Our Customer Service Representative will resolve warranty issues over the email within 24H. Feel free to contact us if you have any question.

