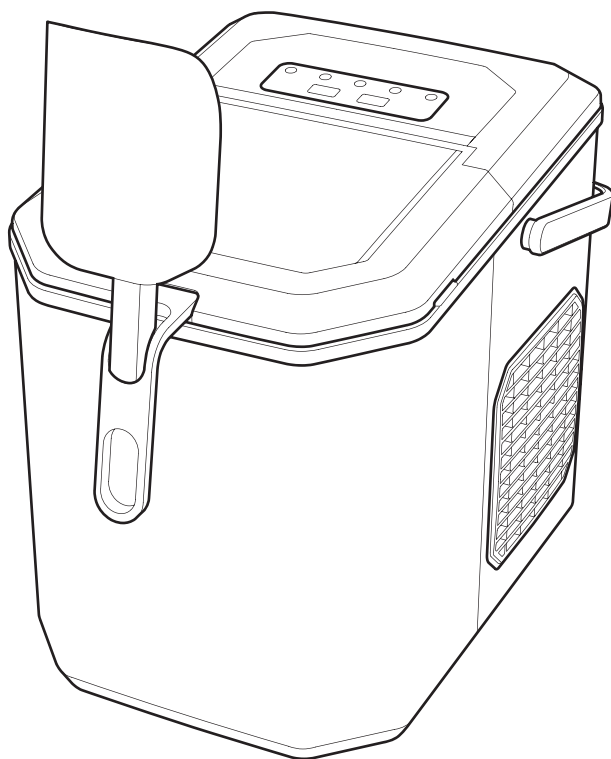


INSTRUCTION MANUAL

Rev05

**SLIM21B / SLIM21W /
SLIM21G1**



Ice Maker

PAGE CONTENT

IMPORTANT SAFETY INFORMATION 01

PRODUCT INTRODUCTION 03

CONTROL PANEL INTRODUCTION 04

USING YOUR ICE MAKER 05

CLEANING AND MAINTENANCE 07

PRODUCT SPECIFICATIONS 09

TROUBLESHOOTING 10

WARRANTY INFORMATION 13

IMPORTANT SAFETY INFORMATION

To reduce the risk of injury or property damage, please follow these safety precautions.

WARNING



- Voltage power from outlet must match specifications on appliance nameplate.



- This appliance **must be** grounded.



- Using an extension cord may cause overheating and increase the risk of fire.

If an extension cord MUST be used:

- 1) **Only use an** extension cord with grounding plug.
 - 2) The marked rating of an extension cord **must be** equal to or greater than the rating of this appliance.
- **Do not** operate if any component, including the cord or plug, is damaged.
 - Unplug the unit before cleaning by hand.



- Only responsible and capable adults should operate the ice maker.
- **Do not** place the power cord where it could be pulled by children or pose a tripping hazard.
- Children should not be left unattended near the ice maker during operation.



- **Do not** use water that is micro-biologically unsafe or of unknown quality.



- **Do not** remove any safety, warning, or product information labels from the unit.



- **Do not** touch the evaporator with your hands while the ice maker is operating.
- **Do not** plug in or unplug the unit with wet hands.



- The unit **must be** placed and set up according to installation instructions before use. The unit is for indoor household use only.



- **Do not** store or use flammable vapors or liquids near the unit.
- **Do not** immerse any part of the unit in water.



- **Do not** attempt to disassemble, repair, modify or replace any part of the ice maker unless permitted by the manufacturer.

WARNING



FIRE OR EXPLOSION HAZARD Flammable Refrigerant

This unit contains an isobutane refrigerant, also known as R600a, a natural gas with high environmental compatibility. However, it is also combustible. Adhere to the warnings below to reduce the risk of injury or property damage.



1. When handling, installing, and operating the unit, care should be taken to avoid damage to the refrigerant tubing.



2. Only dispose of the unit according to Federal and Local Regulations. Contact your local authorities for the environmentally safe disposal of the unit.



3. Keep ventilation openings around the unit's enclosure clear of obstruction.



4. **Do not** place the unit near heat sources such as an oven.

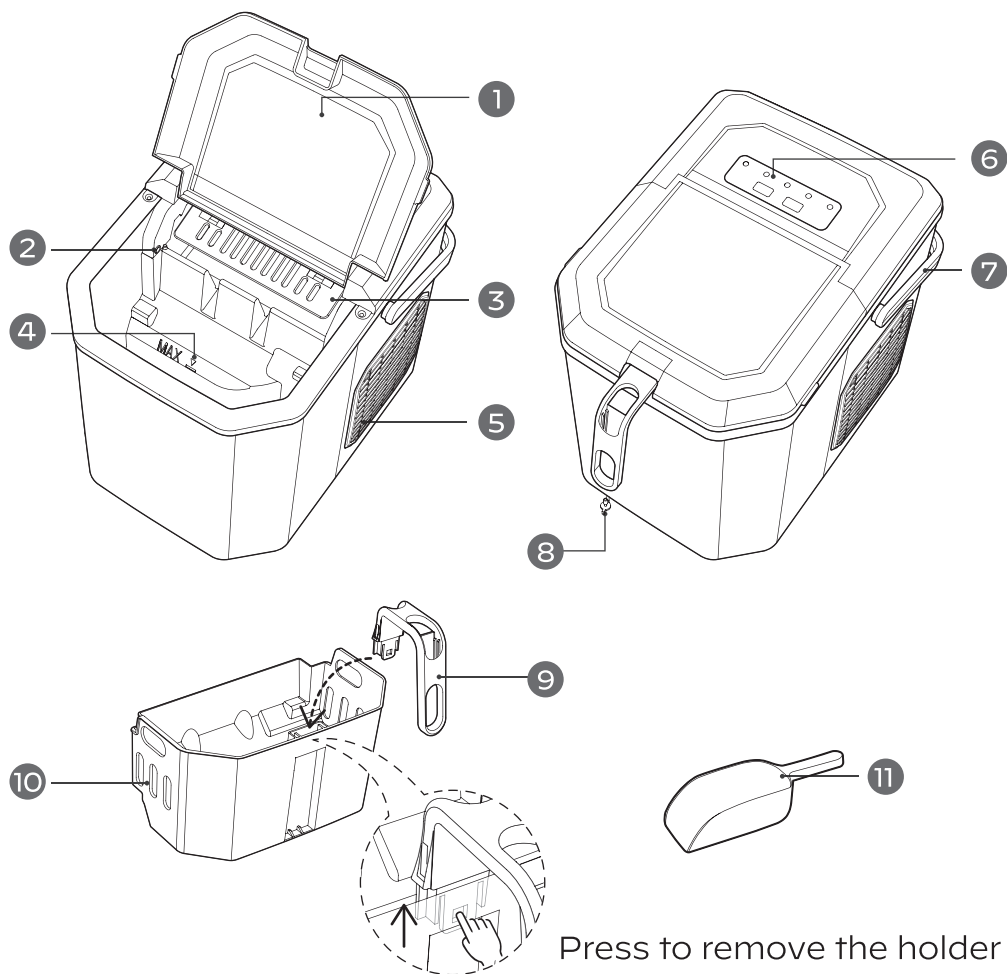


5. Ensure a minimum of three inches of clearance around the side and back walls of the unit for proper air circulation.



6. **Do not** place the unit in direct sunlight.

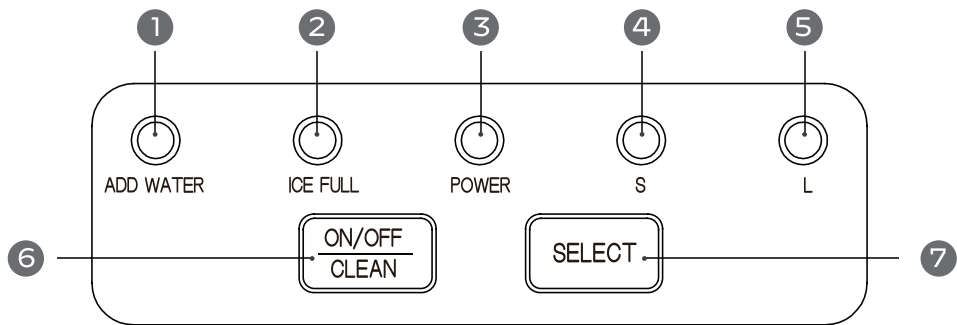
PRODUCT INTRODUCTION



- 1.** Large Viewing Window
- 2.** Ice Full Sensor
- 3.** Ice Shovel
- 4.** Maximum Water Fill Line
- 5.** Air Exhaust Fan
- 6.** Control Panel

- 7.** Handle
- 8.** Drain Plug
- 9.** Ice Scoop Holder
- 10.** Ice Basket
- 11.** Ice Scoop

CONTROL PANEL INTRODUCTION



	Key (with indicator)	Function
1	ADD WATER	The indicator light turns red when the water reservoir is low.
2	ICE FULL	The indicator light turns red when the ice basket is full.
3	POWER	The indicator light turns green when on and flashes when powering up or down.
4	S	The indicator light turns green when small ice mode is selected.
5	L	The indicator light turns green when large ice mode is selected.
6	ON/OFF CLEAN	<div>Short press the ON/OFF button to turn the ice maker on.</div> <div>Short press the ON/OFF button to turn the ice maker off.</div> <div>In standby mode, press and hold the ON/OFF/CLEAN button for 5 seconds to enter self-cleaning mode. The indicator lights of "S" and "L" will flash in green consecutively.</div>
7	SELECT	Comfirms large ice mode or small ice mode.

USING YOUR ICE MAKER

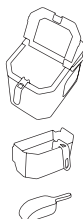
BEFORE FIRST USE

- 1.** Stand upright for 24hrs. Check for accessories.

Missing parts?
Contact us.



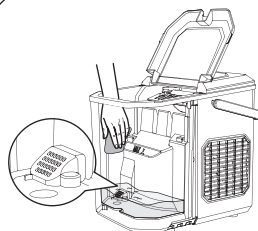
24hrs



Customer Service

- 2.** Clean the ice maker thoroughly before first use.

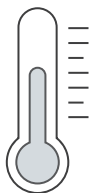
Discard first 4 cycles of ice.



Note: If not used in a long period, discard first 4 cycles of ice.

Use in locations 50°F ~ 90°F.

Perfect ice shape.



50°F ~ 90°F
(10°C ~ 32°C)

More Cycles = Perfect Shape



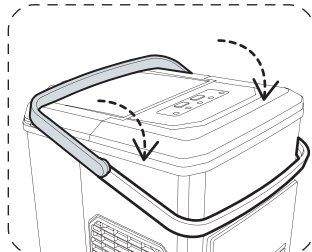
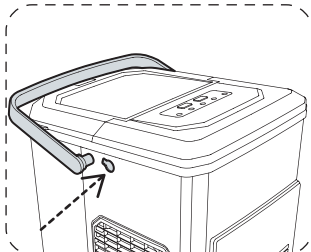
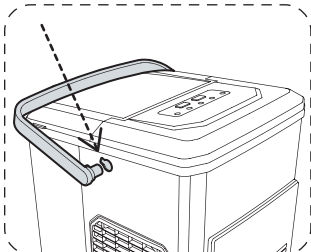
Due to temperature variations and other factors, ice quality should become stable after the first 1-3 cycles.

3. Installing The Handle

Position the handle over the insert hole.

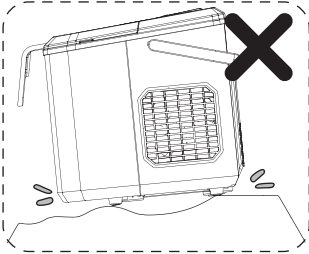
Fit the handle into the insert hole.

Lift back to lock into place.

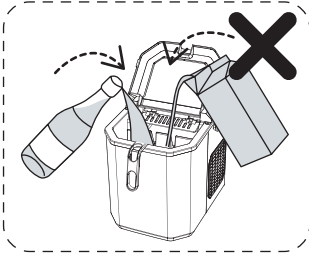


4. What Not To Do!

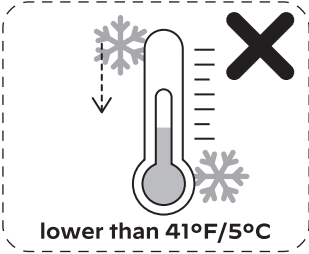
Unstable base.



No other liquids
(Drinking water only).

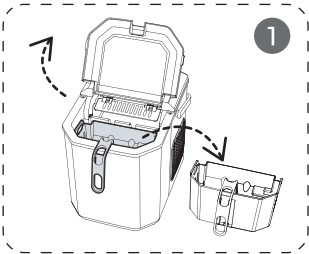


Do not use in
high or low temps.

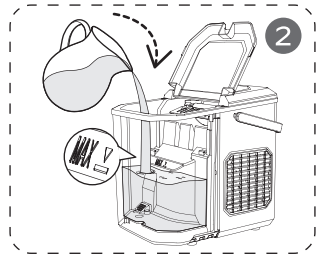


HOW TO USE YOUR ICE MAKER

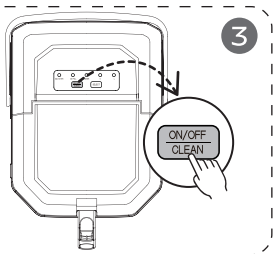
Open cover and
remove basket.



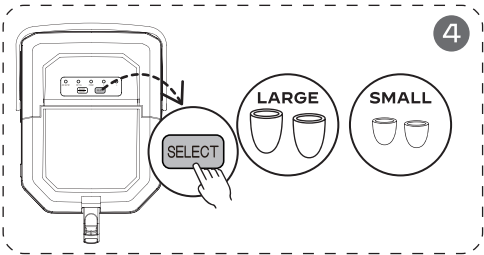
Pour water, do not exceed
the "MAX" water mark.



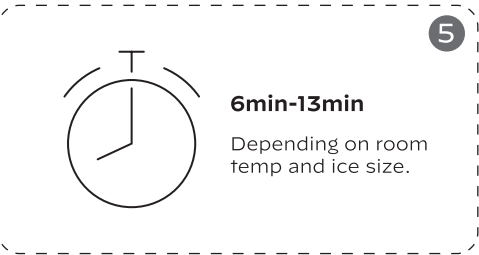
Press the **ON/OFF**
button.



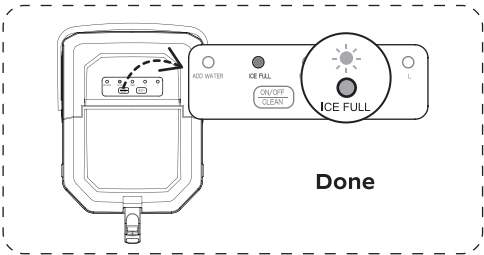
Press **SELECT** button to choose
ice cube size.



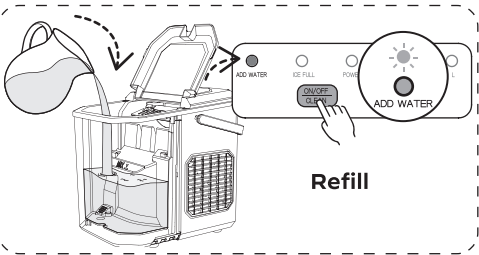
Wait 6min-13min.



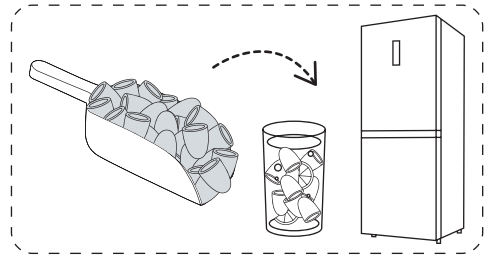
Ice full and ready when "ICE FULL"
indicator is on.



When "ADD WATER" indicator is
red, add water and press **ON/OFF**
button.



Take ice cubes out in time to avoid melting.

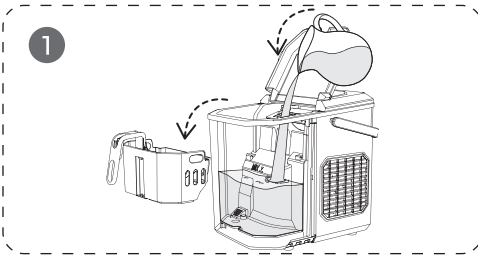


CLEANING AND MAINTENANCE

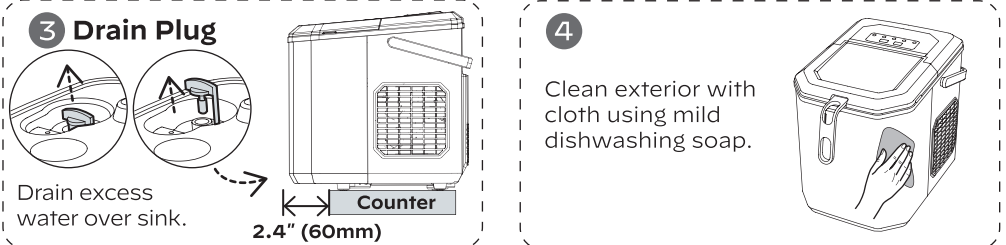
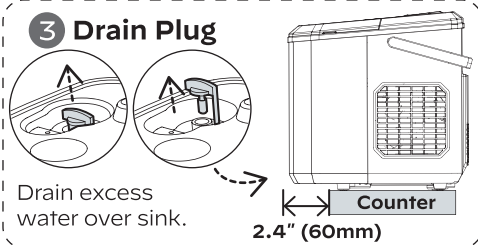
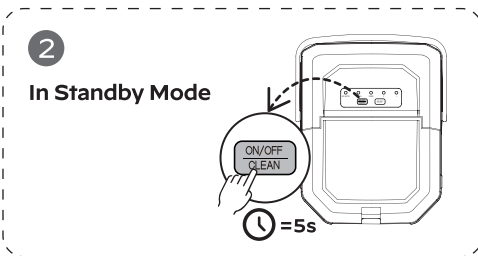
To keep your ice tasting fresh and the unit looking great, we recommend cleaning the unit once per week.

SELF-CLEANING (30-MIN PROCESS)

1. Remove the basket and add water to the "MAX" water level.



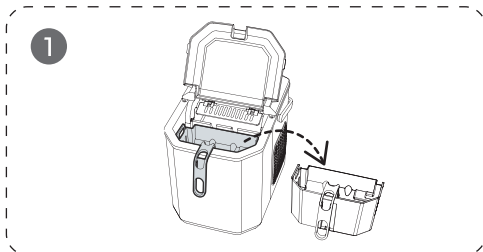
2. Press and hold **ON/OFF/CLEAN** button for 5 sec to start self-cleaning.



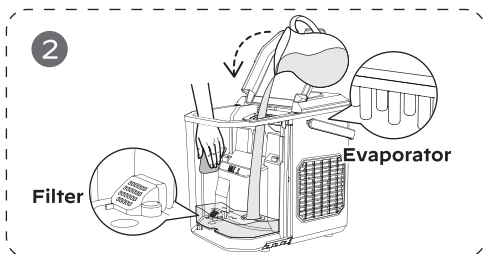
MANUAL CLEANING

Turn off the unit and disconnect from power outlet before cleaning.

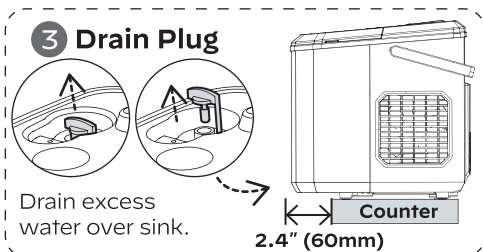
1. Remove the basket.



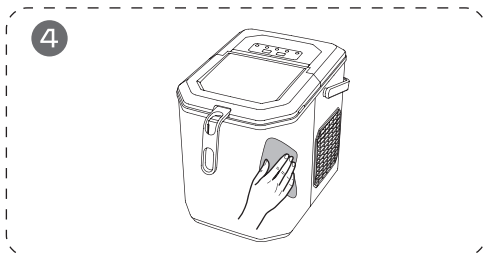
2. Clean using a soft cloth with warm water and vinegar. Clean the water filter, ice shovel and the evaporator to avoid dirt buildup.



3. Drain water reservoir.



4. Clean exterior with cloth and mild dishwashing soap.



⚠ DO's & DON'Ts while cleaning and maintaining

- **Do not** use organic solvent, boiled water, detergent, strong acid and strong alkali etc. for cleaning.
- When the unit is not to be used for a long duration, **drain** the water completely & dry the interior.
- **Store** in a well-ventilated area.

PRODUCT SPECIFICATIONS

Model	SLIM21B / SLIM21W / SLIM21G1
Voltage/Frequency	115V/60Hz
Ice-Making Current	1.5A
Ice-Harvesting Current	1.8A
Working Power	≤160W
Water Reservoir	0.32 gal (1.2L)
Ice Basket Capacity	1.32 lbs (0.6kg)
Ice-Making Rate	26 lbs per Day
Ice Shape	Bullet
Ice Size	Small or Large
Material	ABS, PP
Net Weight	13.7 lbs (6.2kg)
Product Size	8.7 x 11.4 x 11.6 inch (222 x 290 x 294 mm)

TROUBLESHOOTING

Problem	Possible Causes	Solution
Poor ice shape or quality.	Poor heat dissipation.	Leave a 6-inch clearance on all sides of the ice maker for ventilation.
	The water temperature is too high.	Fill with water temperature between 46°F and 77°F.
	The ambient temperature is too high.	Use the ice maker in room temperatures between 50°F and 90°F.
	Evaporator deformation.	Please contact customer service.
Ice maker creating loud noise.	Ice maker has not been cleaned for a long time, which will form a sticky substance around the inlet of the water pump.	Clean every 1 to 2 weeks, using some neutral cleaning agents (such as mild vinegar solution and soapy water etc.)
	Lack of water to pump will create noise when pumping water.	Add more water.
	Fan or ice maker is damaged.	Please contact customer service.
	Water pump is damaged.	

Problem	Possible Causes	Solution
“ICE FULL” indicator light is on.	Ice is blocking the infrared sensor.	Empty the ice basket.
	Infrared sensors do not work.	Wipe clean the infrared sensors, or long press the SELECT button for 5 seconds to force the ice maker to cycle around 10 times. Contact customer service if the infrared sensors still don’t work.
Ice sticks together.	Making ice takes too long.	Stop making ice, after the ice melts restart and try again.
	The water temperature is too low.	Fill with water temperatures between 46°F and 77°F.
	Evaporator deformation.	Please contact customer service.
Not making ice.	Ambient or water temperature is too high.	Keep ambient temperature less than 90°F and fill with cold water.
	Water pump is damaged.	Please contact customer service.
	Refrigerating system leaking.	
	Refrigerating system blocked.	
	The fan stopped working.	
	The wires are loose.	
	The gears in the motor are broken.	

Problem	Possible Causes	Solution
“ADD WATER” indicator light is on	Low water level or need of water.	Stop making ice, refill water, press ON/OFF button, then restart and try again.
	Water screen blocked at the bottom of the water reservoir.	Run the self-cleaning cycle.
	Pump malfunction.	Please contact customer service.
	Water detector malfunction.	

WARRANTY INFORMATION

30-DAY LIMITED WARRANTY

To provide customers with a quality shopping and user experience, the unit can be replaced or returned for a full refund within the 30-day period from the date of purchase.

30-DAY TO 1-YEAR LIMITED WARRANTY

After the 30-day warranty has expired, a 1-year warranty from the date of purchase that covers product replacement is automatically activated. Please note that proof of purchase is required for all warranty claims.

30-DAY TO 1-YEAR WARRANTY LIMITATIONS

This warranty does not cover:

- Any condition resulting from incorrect or inadequate maintenance or care.
- Damage resulting from misuse, abuse, negligence, accidents, or shipping damage.
- Dissatisfaction due to buyer's remorse.
- Normal wear and tear.
- Damages incurred after initial transportation.

Thank You

For Choosing Us!

All of us do appreciate your ice maker purchase. We hope that you are as happy with the ice maker as we were designing and manufacturing it for you. We strive to provide you with the best quality ice makers and services in the industry.

Questions or Problems?



877-201-4016



help_service_center@outlook.com