

TRAMONTINA

HOME APPLIANCES

3.2 Cu. Ft. Refrigerator



Use & Care Instructions

Read All Instructions Carefully.
Save These Instructions.

Table of Contents

Product Introduction	2
Installation	3-5
Door Reversal Instructions	6-7
Defrosting the Chiller	8
Cleaning and Maintenance	9
Troubleshooting	10
Safety Warnings	11
Customer Service	12
Product Warranty	13



Model #80901/100

PRODUCT INTRODUCTION



-
- | | |
|-------------------------------------|----------------------------|
| 1 Adjustable Thermostat | 6 Bracket Cover |
| 2 Chiller Compartment | 7 Seven-Can Dispenser Rack |
| 3 Drip Pan | 8 Tall Bottle Storage Bin |
| 4 Adjustable Tempered Glass Shelves | 9 Reversible Door |
| 5 Adjustable Front Leveling Legs | 10 Ice Cube Tray |

INSTALLATION

STOP! **BEFORE YOU DO ANYTHING!**

Do not plug the refrigerator into a power outlet until it has been resting in its upright position for at least six (6) hours.

If the refrigerator has been laid on its side, placed upside down or tilted more than 45° during moving or transport, it is extremely important to allow the refrigerant and compressor oil to separate and settle so the compressor operates properly. Failure to do so will cause severe mechanical problems with the unit's motor/compressor, and *will void the warranty*.

TRANSPORT

Use two or more people to move the refrigerator.

VENTILATION SPACE

In order for the refrigerator to function efficiently, it **MUST** be placed in an adequately ventilated space to allow for heat dissipation. It is important to allow at least 4 inches (100 mm) of space behind and on each side, and 8 inches (200 mm) of space above the unit.

The door requires approximately 21" (533 mm) of space in front of the refrigerator to open. To fully utilize the refrigerator, space should be allowed for the door to open fully to 160°.

STABLE SURFACE

The refrigerator must be placed on a flat, stable surface. Adjust the refrigerator's front leveling legs to assure quiet operation and prevent rattling when the compressor activates.

IMPORTANT: Never place the unit on soft materials such as foam, plastic or thick textured carpeting.

INSTALLATION

POWER SUPPLY

This refrigerator is equipped with a 115V/60Hz single phase motor. If the power supply to the refrigerator is subject to large fluctuations, it is strongly advised to utilize a wall-mounted power conditioner surge protection device to prevent damage to the electronic components and motor.

The power plug is a standard grounded three-prong non-polarized flush mount, which allows for easier connection to power outlets.

Power plug must be connected to the outlet directly, and never to an extension cord.

IMPORTANT: Do not cut or remove the third ground prong from the power cord.

POWER CORD

Never shorten or lengthen the power cord. Do not fold or coil the power cord.

IMPORTANT - Never place the excess length of power cord into the compressor enclosure in the back of the refrigerator. This action creates a dangerous heat build-up which can melt the cord, cause an electrical hazard and may potentially cause a fire.

Touching the power cord to the compressor at the back of the refrigerator during operation can create an electrical hazard and damage the compressor.

If the power cord is damaged, it must immediately be replaced by a trained service provider, as special tools are required.

IMPORTANT: Never use with an extension cord.

CLEAN BEFORE USE

To remove any manufacturing dust and residual odors, wipe the refrigerator inside and out with a damp cloth and a solution of baking soda and warm water (2 tbsp. baking soda to 1 qt. water). Wipe away any residual baking soda with a clean moist cloth. Allow to dry before operating.

Periodically clean the refrigerator with a sponge or cloth moistened with mild soapy water, or baking soda and water.

PROTECT FROM MOISTURE

Heavy moisture in the environment can cause degradation to the insulation, as well as rust to the cabinet, compressor and/or power supply.

Do not spray the refrigerator with water.

PROTECT FROM HEAT

Place the refrigerator away from heat source or direct sun.

The hotter the operating environment, the harder the compressor has to work to keep the contents cold, which will shorten the operating life.

Do not cover the refrigerator with tarps or other items while operating, as this may cause overheating.

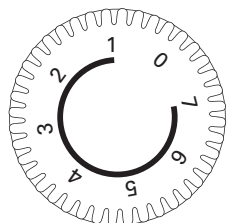
INSTALLATION

USING YOUR REFRIGERATOR

Your refrigerator is only designed for the storage of food and beverages.

Temperature Control

Use the Adjustable Thermostat knob to control the cooling temperature.



0 = Turns the Compressor Off

1 = Low Cool

7 = High Cool

Allow the refrigerator to cool down completely before adding food. To ensure proper cooling, do not overload the unit.

SHUTDOWN

If the refrigerator will not be in use for a long period of time, disconnect it from the power outlet, remove all food, clean inside thoroughly and leave the door open to prevent mildew.

SAFETY WARNING

The appliance is not intended for use by young children or infirm persons without supervision. Young children should be supervised to ensure that they do not play with the appliance.

This refrigerator should not be positioned within a recessed or enclosed cabinet. It is designed for freestanding installation only. This unit is not designed to be installed in a RV, garage or any outside installation.

The surface of the compressor may become hot during normal operation. Do not touch as this may cause injury.

Do not touch the inside of the chiller compartment during operations. Do not touch the ice with wet hands as this could cause injury.

OTHER DANGERS

Keep the refrigerator away from any combustible or volatile liquids or gases, including gasoline, oil, alcohol, paint, paint thinners and solvents. Such chemicals should never be stored in the refrigerator.

DOOR REVERSAL INSTRUCTIONS

TOOLS NEEDED: Phillips screwdriver or 5/16" socket tool and thin flathead screwdriver.

The refrigerator is shipped with the brackets attached on the right side.

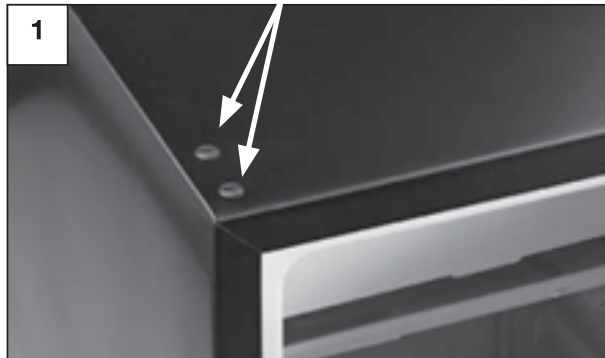
The door may be reversed to allow opening from the left side.

If you plan on reversing the door hinges, DO NOT plug the refrigerator into the power outlet.

Remove glass shelves before reversing the door.

IMPORTANT: NEVER LAY THE REFRIGERATOR ON ITS BACK.

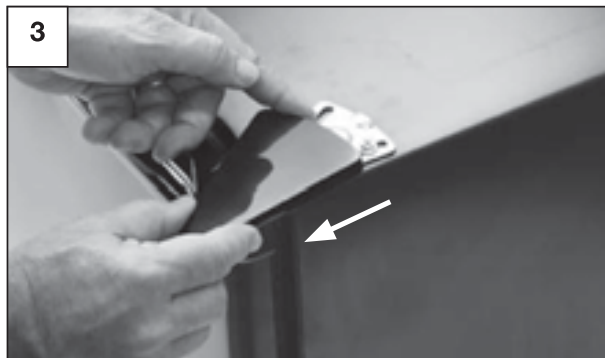
The compressor and motor components are installed at the back of the refrigerator and may easily be damaged if the refrigerator is placed on its back.



Gently remove the plastic **hole insert plugs** from the left side of the refrigerator with a thin flathead screwdriver.



Loosen the triangular **bracket cover** by pushing the **bracket cover** towards the back of the refrigerator and simultaneously pulling up.



Slide the cover towards the front of the refrigerator and lift off.



Remove the metal **bracket** by unscrewing the two screws.

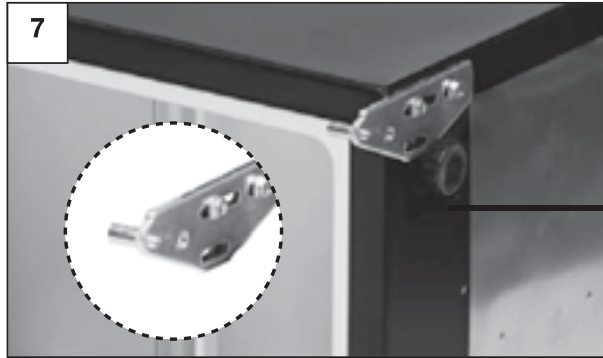


Lift and remove the door.

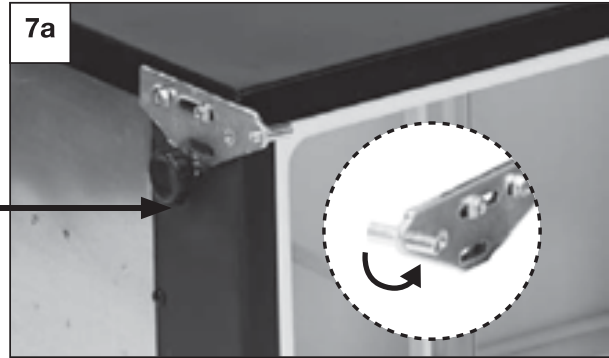


Remove the plastic **hole inserts** from the top of the door and install on the opposite side.

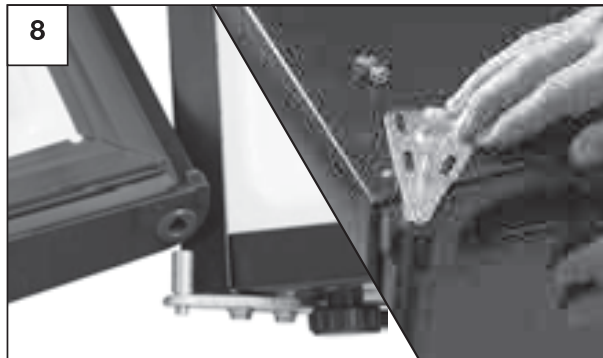
DOOR REVERSAL INSTRUCTIONS



With the unit on its side, remove the bottom metal **base bracket**. Then gently place the refrigerator on opposite side to complete the door reversal.



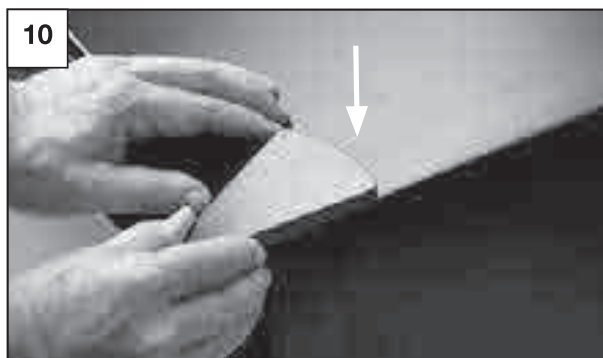
Unscrew the axle insert and screw into the opposite side of the metal base bracket. Attach the metal **base bracket** to the bottom of the refrigerator. Lift the refrigerator to an upright position.



To reattach the door, place the door onto the bottom axle insert. Place the top **bracket** into the door and align the metal **bracket** holes over the holes in the top of the refrigerator cabinet. Tighten the two screws to hold in place.



The rubber gasket should be compressed on all sides of the door. If the gasket is more compressed on one side, the metal bracket position should be adjusted. Once the door position is finalized, securely tighten the screws.



Reinstall the triangular bracket cover by carefully threading the bracket cover onto the metal **bracket** and pressing down.



Reinstall all plastic **hole insert plugs**. The reinstallation of the plastic **hole insert plugs** is important to maintain the seal and integrity of the insulation.

IMPORTANT: It is extremely important to wait at least six hours before plugging the refrigerator into a power outlet. During the door reversal process, the refrigerant and compressor oil mixed. It is important to allow the refrigerant and compressor oil to separate and settle so the compressor operates properly. Failure to do so will cause severe mechanical problems, perhaps even the destruction of the unit's motor/compressor, and will void the warranty.

DEFROSTING THE CHILLER

The chiller compartment may not reach temperatures low enough to freeze foods. It works well when the food is already frozen prior to storage.

It is designed for ice-making and short-term storage of some commercially frozen foods.

Place frozen food into the chiller as quickly as possible after purchase. If there are instructions on the packet, carefully follow these instructions regarding storage times.

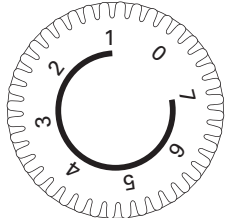
If frost builds up to 1/8" (3.1 mm) or more, the chiller compartment should be defrosted.

Frost build-up impedes efficient operation and causes the compressor/motor to work harder to keep the contents cold, which shortens operating life. Frost usually forms from the atmosphere when the door is opened or from moisture content in stored food.

Defrosting is done manually.

When defrosting, make certain the refrigerator is **unplugged from the power outlet**.

To begin the defrosting operation, remove all food within the chiller section. Set the temperature control to "0", which will turn the compressor off. Apply a slight pressure, rotating the knob counterclockwise.



Leave the door to the chiller compartment and refrigerator open. Allow the drip pan to collect water.

As the frost thaws, wipe up the water with a soft cloth or sponge.

To speed defrosting, you may place a bowl of warm water (122 °F / 50 °C) into the chiller section.

IMPORTANT:

- Never use boiling water or a hair dryer in an attempt to speed defrosting, as it can warp the inner casing of the refrigerator and degrade the insulation.
- Never attempt to scrape the ice or frost with a tool of any sort as it can damage the inner casing or surface of the evaporator.

After defrosting and removal of pooled water is complete, reconnect the power outlet, reset the thermostat to operating temperature and close the door. Wait until the refrigerator is cool before placing food within the refrigerator or chiller.

SUFFOCATION HAZARD:

During the defrosting process, the shelves should remain in the refrigerator. This deters children from climbing into the refrigerator, becoming trapped and potentially suffocating.

CLEANING AND MAINTENANCE

It is important to clean and maintain the refrigerator once a month. When performing maintenance, make certain the refrigerator is unplugged from the power outlet.

Wipe the inner and outer surfaces of the refrigerator clean with a damp cloth. If needed, use a gentle detergent or a solution of baking soda and water. Remove any residue with clean water and a soft cloth, then dry with another cloth.

Once clean, you may use a common kitchen appliance wax on outer surfaces.

Inspect, clean and maintain the rubber gasket around the door. A small amount of petroleum jelly applied to the bracket side of gaskets will keep the gasket pliable and ensure a good seal.

IMPORTANT:

- Do NOT use hot water, harsh detergents, gasoline, kerosene, solvents, acids or anything flammable to clean the refrigerator. These can damage the paint and degrade the plastic components.
- Do NOT spray the refrigerator with water as this may cause rust and degrade the insulation.
- Do NOT clean glass shelves with hot water when they are cold. Shelves may break if exposed to sudden temperature changes or impact. For your protection, tempered glass is designed to shatter into many small pebble-size pieces.
- The components, if need to be replaced, should be replaced with like components, and should be replaced by the manufacturer or its service agent or a similarly qualified person in order to avoid a hazard and minimize the risk of possible ignition due to incorrect parts or improper service

TROUBLESHOOTING

Problem	Recommended Adjustment
Refrigerator doesn't work.	<ul style="list-style-type: none"> • Check for power failure. • Verify unit is plugged into power outlet. • Check home fuse box to determine if a fuse has blown.
Refrigerator is too cold.	<ul style="list-style-type: none"> • Adjust thermostat to lower number.
Refrigerator is not cooling sufficiently.	<ul style="list-style-type: none"> • Adjust thermostat to higher number. • Ensure door is closed properly. • Door gaskets may be damaged. • Refrigerator may not have enough ventilation space around it. • Refrigerator in a hot area or in sunlight. • Something hot may have been placed in the refrigerator. • Too much food in the refrigerator may block circulation of cool air.
Refrigerator compressor runs for long periods.	<ul style="list-style-type: none"> • Hot weather and/or frequent door opening will force the refrigerator to work harder to keep cool. • Do not overload the refrigerator or chiller. • Do not put hot foods in the refrigerator.
Refrigerator door does not close properly.	<ul style="list-style-type: none"> • Refrigerator door or chiller may be overloaded. • Refrigerator may be tilted – adjust front legs to level unit.
Side panel of refrigerator is hot.	<ul style="list-style-type: none"> • The refrigerator has a pipe that heats up to remove condensation. Does not indicate a malfunction. • Usually happens when door is opened and closed frequently, or when operated in high temperature weather. Results from dissipation of heat from within the unit. Do not touch the panel. Does not indicate a malfunction.
Condensation forms along the seals or on the outside of the refrigerator.	<ul style="list-style-type: none"> • Condensation forms under situations of high humidity; does not indicate a failure. Wipe condensation with dry towel.
Sound of trickling water.	<ul style="list-style-type: none"> • This is the refrigerant flowing. Does not indicate a malfunction.
Buzzing sound.	<ul style="list-style-type: none"> • A buzzing noise is typically generated by the compressor when starting up or shutting down.
Odor.	<ul style="list-style-type: none"> • Check food for spoilage. • Foods with strong odors should be wrapped or contained carefully. • Unit may require cleaning.

SAFETY WARNINGS

Before you use your refrigerator, please read this owner's manual carefully.

Use this appliance only for its intended purpose as described in this owner's manual.

DANGER: Risk of child entrapment. Before you throw away your old refrigerator or freezer:

- Take off the doors.
- Leave the shelves in place so that children may not easily climb inside.
- The appliance must be correctly installed and connected to the power supply in accordance with the installation instructions before it is used.. (See: "HOW TO INSTALL").
- The main power supply must be properly grounded.
- This refrigerator must be positioned so that the plug is accessible. Never unplug you unit often by pulling on the power cord. Always grasp the plug firmly and pull straight out from the outlet.
- Do not use an extension cord as this can negatively affect the performance of the unit.
- When transporting the refrigerator, keep the unit in the upright position. Do not tilt the appliance beyond 45° or place the unit in upside down position. Do not tip over.
- Do not touch the cooled surfaces while the appliance operates, especially not with wet hands, because the skin may stick to the cold surfaces.
- It is recommended that the refrigerator is positioned away from any combustible sources such as gas, petrol, alcohol, lacquer and banana oil, etc. The aforementioned objects should not be stored in the refrigerator under any circumstances.
- If the unit fails to cool properly, dispose of spoiled food as needed.
- Unplug your unit before cleaning or before making any repairs. NOTE: If for any reason this product requires service, we strongly recommend that a certified technician perform the service. Repairs made by non-qualified personnel will void the warranty.
- Do not defrost the appliance with other electric devices (hair dryer etc.) and never scrape the ice or frost layer with sharp tools. Warning: Do not damage the refrigerant circuit.
- The rating plate is inside the appliance or outside on the rear or side wall.
- This appliance is not intended for use by persons (including children) with reduced physical, sensory or mental capabilities, or lack of experience and knowledge, unless they have been given supervision or instruction concerning use of the appliance by a person responsible for their safety. Children should be supervised to ensure that they do not play with the appliance.
- Do not run cord over carpeting or other heat insulators. Do not cover the cord. Keep cord away from traffic areas, and do not submerge in water. If the supply cord is damaged, it must be replaced by the manufacturer or its service agent or a similarly qualified person in order to avoid a hazard. Repair or replace immediately all electric service cords that have become frayed or otherwise damaged. Do not use a cord that shows cracks or abrasion damage along its length, the plug or the connector end.
- Do not operate your refrigerator in the presence of explosive fumes.
- WARNING--Do not use the flame or catch the fire near the unit.
- DANGER-Risk of fire or Explosion. Flammable Refrigerant Used. To Be Repaired Only By Trained Service Personnel. Do Not Puncture Refrigerant Tubing.
- Caution--Risk of fire or Explosion. Dispose Of Property In Accordance With Federal Or Local Regulations. Flammable Refrigerant Used.
- CAUTION – Risk Of Fire Or Explosion. Flammable Refrigerant Used. Consult Repair Manual/Owner's Guide Before Attempting To Service This Product. All Safety Precautions Must be Followed.
- CAUTION – Risk Of Fire Or Explosion Due To Puncture Of Refrigerant Tubing; Follow Handling Instructions Carefully. Flammable Refrigerant Used.

SAFETY WARNINGS

REMOVE REFRIGERATOR DOOR BEFORE DISPOSING UNIT.

SUFFOCATION HAZARD:

The shelves should remain in the refrigerator for disposal. This deters children from climbing into the refrigerator, becoming trapped and potentially suffocating.

All safety precautions must be followed.

CUSTOMER SERVICE

In the unlikely event this item is damaged or missing parts, please do not return it to the store. Instead, please contact our customer service department listed below for assistance so we can work quickly and efficiently to resolve product issues.

TRAMONTINA USA, Inc.
Customer Service
12955 West Airport Blvd.
Sugar Land, TX 77478-6119
(800) 221-7809
www.tramontina-usa.com

1 YEAR LIMITED WARRANTY

This product is warranted by **TRAMONTINA** to be free of defects in material and workmanship for a period of one year from the date of the original purchase, provided the unit is used under normal operating conditions intended by the manufacturer. Any piece will be repaired or replaced at no charge with the same item or one of equal or better value if it is found to be defective under normal, noncommercial single-family household use and when cared for according to the manufacturer's instructions. This warranty does not cover lost or stolen items, any food loss due to product failure, or defects caused by accidents, fire, flood, improper installation or abuse or misuse of the product, including but not limited to improper placement of item, outdoor use or neglect, alteration or use in commercial establishments.

For warranty inquiries, you must first contact TRAMONTINA'S Customer Service Department to receive instructions and/or return authorization. In most cases, our Customer Service Department can assist with many operation/use questions, product manuals or trouble shooting tips, and the return of the unit is usually not necessary.

Tramontina reserves the right to repair or provide replacement parts which may have become defective.

This warranty gives you specific legal rights, and you may also have other rights, which vary according to country, state or province.

Rental exception. For products used in a rental environment, Tramontina's warranty only covers labor and parts for 90 days. No other warranty applies.

Any question regarding this warranty and/or the use and care of this product should be directed to:

TRAMONTINA

TRAMONTINA USA, Inc.

Customer Service

12955 West Airport Blvd.

Sugar Land, TX 77478-6119

(800) 221-7809

www.tramontina-usa.com

For faster assistance, please register your product online at www.tramontina-usa.com

MADE IN CHINA

TRAMONTINA

Product & Warranty Registration Card

Thank you for purchasing this Tramontina product. We appreciate you taking a few minutes to complete this card and mailing it back to us, or registering online for faster assistance. The information we receive will help us develop new products and services to meet your expectations. Please contact us if you have any comments or questions about our products.

(800) 221-7809 | tusa@tramontina-usa.com | www.tramontina-usa.com

Model #80901/100 3.2 Cu. Ft. Refrigerator

Name _____ ☐ Male ☐ Female

Address _____

City _____ State _____ Zip Code _____

Phone _____ Date of Purchase _____

e-mail _____

Where did you purchase this product? _____

Rate each of the following items in terms of their importance in your decision to buy this product.

(1 Least - 5 Most)

☐ ☐ ☐ ☐ ☐ Tramontina Brand
1 2 3 4 5

☐ ☐ ☐ ☐ ☐ Price/Value
1 2 3 4 5

☐ ☐ ☐ ☐ ☐ Quality
1 2 3 4 5

☐ ☐ ☐ ☐ ☐ Design
1 2 3 4 5

☐ ☐ ☐ ☐ ☐ Features
1 2 3 4 5

☐ ☐ ☐ ☐ ☐ Packaging
1 2 3 4 5

☐ ☐ ☐ ☐ ☐ Store Display
1 2 3 4 5

☐ ☐ ☐ ☐ ☐ Recommendation
1 2 3 4 5

☐ ☐ ☐ ☐ ☐ Warranty
1 2 3 4 5

Which features did you find most important about this product? _____

What features would you like to see added to this product? _____

Thank you for registering!

TRAMONTINA USA, Inc. • 12955 West Airport Blvd. Sugar Land, TX 77478-6119
(800) 221-7809 • (281) 340-8400 • Fax (281) 340-8410
www.tramontina-usa.com

PLEASE PLACE
STAMP HERE
POST OFFICE
WILL NOT MAIL
WITHOUT POSTAGE

TRAMONTINA USA, Inc.

12955 West Airport Blvd.
Sugar Land, Texas 77478-6119

Fold Here

▼ Use tape to seal card ▼

