

Getting to know your SOUND TABLE SPEAKER

User's Guide for Model AT638-2.1



Important Safety Instructions

- Read these Instructions.
- Keep these Instructions.
- Heed all Warnings.
- Follow all instructions.
- Do not use this apparatus near water.
- Clean only with a dry cloth.
- Do not block any ventilation openings. Install in accordance with the manufacturer's instructions.
- Do not install near any heat sources such as radiators, heat registers, stoves, or other apparatus (including amplifiers) that produce heat.
- Do not defeat the safety purpose of the polarized or grounding - type plug. A polarized plug has two blades with one wider than the other. A grounding type plug has two blades and a third grounding prong. The wide blade or the third prong are provided for your safety. When the provided plug does not fit into your outlet, consult an electrician for replacement of the obsolete outlet.
- Protect the power cord from being walked on or pinched particularly at plugs, convenience receptacles, and the point where they exit from the apparatus.
- Only use attachments/accessories specified by the manufacturer.
- Unplug this apparatus during lightning storms or when unused for long periods of time.
- Refer all servicing to qualified service personnel. Servicing is required when the apparatus has been damaged in any way, such as power-supply cord or plug is damaged, liquid has been spilled or objects have fallen into the apparatus, the apparatus has been exposed to rain or moisture, does not operate normally, or has been dropped.
- Use only with a cart, stand, tripod, bracket, or table specified by the manufacturer, or sold with the apparatus. When a cart is used, use caution when moving the cart/apparatus combination to avoid injury from tip-over.



no guarantee that interference will not occur in a particular installation. If this equipment does cause harmful interference to radio or television reception, which can be determined by turning the equipment off and on, the user is encouraged to try to correct the interference by one or more of the following measures:

- Reorient or relocate the receiving antenna.
- Increase the separation between the equipment and receiver.
- Connect the equipment into an outlet on a circuit different from that to which the receiver is connected.
- Consult the dealer or an experienced radio/TV technician for help.

Additional Warnings and Precautions

- **CAUTION:** TO PREVENT ELECTRIC SHOCK, MATCH WIDE BLADE OF PLUG TO WIDE SLOT, FULLY INSERT.
- Mains plug is used as disconnect device and it should remain readily operable during intended use. In order to disconnect the apparatus from the mains completely, the mains plug should be disconnected from the mains socket outlet completely.
- **WARNING:** Shock hazard - Do Not Open.
- **CAUTION:** Use of controls or adjustments or performance of procedures other than those specified may result in hazardous radiation exposure.
- **WARNING:** Changes or modifications to this unit not expressly approved by the party responsible for compliance could void the user's authority to operate the equipment.
- **WARNING:** Do not place this unit directly onto furniture surfaces with any type of soft, porous, or sensitive finish. As with any rubber compound made with oils, the feet could cause marks or staining where the feet reside. We recommend using a protective barrier such as a cloth or a piece of glass between the unit and the surface to reduce the risk of damage and/or staining.
- **WARNING:** Do not ingest battery, chemical burn hazard.
- Battery shall not be exposed to excessive heat such as sunshine, fire or the like.
- Lithium batteries, like all rechargeable batteries, are recyclable and should be recycled or disposed of according to state and local guidelines. They should never be disposed of in normal household waste and they should never be incinerated, as they might explode. Contact your local government for disposal or recycling practices in your area.

This device complies with part 15 of the FCC rules.

Operation is subject to the following two conditions:

- 1) This device may not cause harmful interference, and
- 2) This device must accept any interference received, including interference that may cause undesired operation.



WARNING: To reduce the risk of electric shock, do not remove cover (or back). No user-serviceable parts inside. Refer servicing to qualified service personnel.



The exclamation point within an equilateral triangle is intended to alert the user to the presence of important operating and maintenance (servicing) instructions in the literature accompanying the appliance.



The lightning flash with arrowhead symbol, within an equilateral triangle, is intended to alert the user to the presence of un-insulated "dangerous voltage" within the product's enclosure that may be of sufficient magnitude to constitute a risk of electric shock to persons.



This symbol indicates that this product incorporates double insulation between hazardous mains voltage and user accessible parts.



WARNING : This product can expose you to chemicals including lead, which is known to the State of California to cause cancer. For more information go to: www.P65Warnings.ca.gov This product meets and complies with required Federal product guidelines.

FCC Warnings

Warning: Changes or modifications to this unit not expressly approved by the party responsible for compliance could void the user's authority to operate the equipment.

NOTE: This equipment has been tested and found to comply with the limits for a Class B digital device, pursuant to Part 15 of the FCC Rules. These limits are designed to provide reasonable protection against harmful interference in a residential installation. This equipment generates, uses, and can radiate radio frequency energy and, if not installed and used in accordance with the instructions, may cause harmful interference to radio communications. However, there is

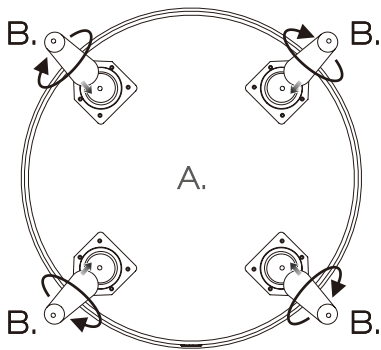
Assemble Steps:

1. Open the gift box, put the speaker on the table and the fixing hole upwards.
2. Take on from wooden tripod and match it with one fixing hole.
3. Rotate it clockwise until tightly fixed.
4. To fix the left two with the same procedure.
5. The wooden leg is well fixed.
6. Put the speaker on the ground.

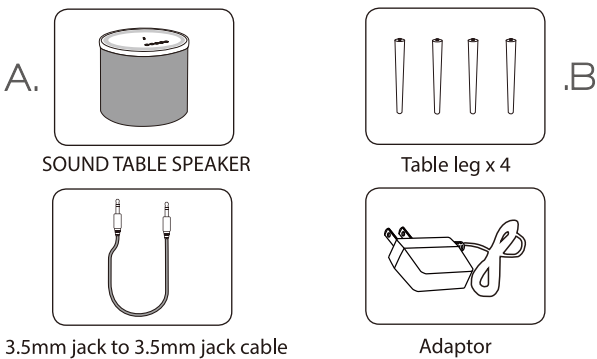
Warning:

1. The maxium bear weight of this product is 20KG, the consumers couldn't put any item more than 20KG on this product, otherwise, the consumers will bear the damage to this product by themselves.
2. This product couldn't be used as seat, no matter adult, or children, otherwise, the consumers will have to bear by themselves the damage to this product, and the damage to your health.

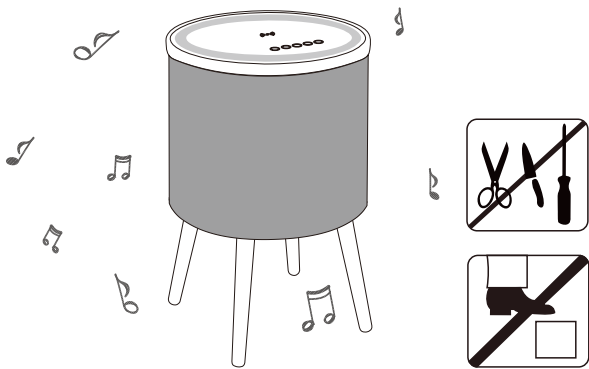
- ① **Align table leg(B.) with(A.) screw holhten clockwise, Tighnten clockwise.**



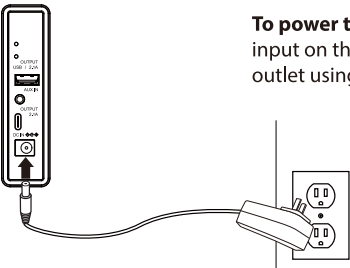
Accessories



- ② **Enjoy Music~**

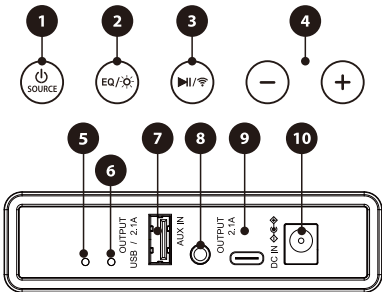


Powering The Speaker



To power the unit, connect the DC power input on the table to a standard power outlet using the included AC/DC power adapter.

Function Description



Function Description

Control Panel & Inputs

- 1. Power/Source :** Press to power ON. Press and hold to power OFF.
When powered ON,
press to change audio source between Wireless, USB and AUX in.
- 2. Press button :** LED(Six modes)
Double press button: EQ(ROCK/POP/MOVIE)
Press button 3 seconds: Power off LED
- 3. Play/Pause/Pair:** Press to play/pause a track. Press and hold for 3 seconds to manually pair to a Wireless device or disconnect the wireless device .
Play Plus Mode: In Wireless mode. Double press button to pair other unit.
- 4. Volume+/-:** Press to raise or lower volume. Press and hold to skip forward or back a track.

Wireless Audio

Pairing & Playing Audio

- When first powered on, the speaker defaults to Wireless Mode and is ready to pair automatically. When pairing, remain within 3 feet of the unit.
- Using the controls on your Wireless device, select **ATC638-2.1** in the Wireless settings to pair. When successfully paired, a voice will announce the connection.
- Use the controls on the connected Wireless device to select and play audio. Use the speaker controls or the connected Wireless device to play pause, and adjust the volume level.
- After initial pairing, the speaker will automatically connect to the last Wireless device used whenever it is in Wireless Mode. Note: If your device should become unpaired or you find it is unable to connect, press and hold the **Play** button to enter Pairing Mode. A voice will announce, "Wireless is connecting," and you can connect to the speaker manually.

Party Plus Mode

If you have another **ATC638-2.1** table speaker, you can pair and play the two speakers together for a surround sound effect.

- To enter Party Plus Mode, please make sure the unit is in wireless mode. Double press button **Play/Pause/Pair**, on one of the tables, then do the same on the other table. Whichever table you activate Party Plus Mode on first is now the primary unit.
- When the two speakers are paired together a voice will announce the connection.
- Use your device to select and play tracks. The audio will now be heard through both speakers.
- To disconnect the speakers, Double press button **Play/Pause/Pair**.

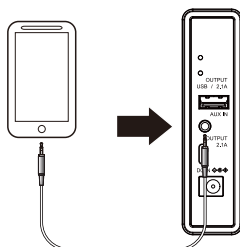
Note: To use Party Plus Mode, please make sure that you connect the speaker before pairing to your Wireless device. You will not be able to connect the speakers if you are already paired to a Wireless device.

Aux In

Requires a 3.5mm audio cable(included).

- Connect a 3.5mm audio cable to the **Aux In** on the unit and the **audio output/headphone jack on an audio device.**
- Press **Power/Source** to switch to **Aux in** mode.
- Use the controls on the connected device to select and play audio,

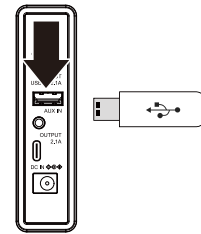
Note: Newer phone models may require an adapter (lightning to 3.5mm headphone adapter for iPhone) or (USB-C to 3.5mm audio adapter) for android.



- 5. Party Plus LED:** Flashing green while pairing. Solid green when connected.
- 6. Power/Source/Wireless LED:**
 - Solid Red: Unit is off.
 - No Light: Unit does not have power.
 - Flashing Blue: Unit is attempting to pair with a wireless device.
 - Solid Blue: Unit is paired with a wireless device.
 - Solid Green: Unit is in Aux in mode.
 - Solid Cyan: Unit is in USB mode.
- 7. USB Charging Port / USB Media port**
- 8. Aux in (3.5mm Input)**
- 9. Type-C Charging Port**
- 10. DC Power Input**

USB Playback

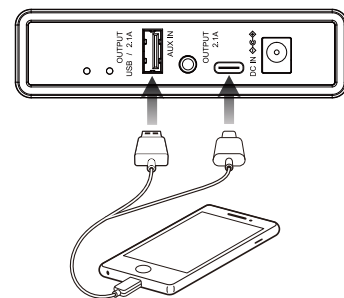
- Load a USB drive in to the USB Media port. The speaker will automatically switch to USB mode, solid cyan light when in USB mode, and begin playing media on the drive.
- Use the controls on the speaker to select and play audio from the connected drive.



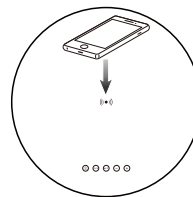
USB/Type-C Charging Port

Plug your USB/Type-C charging cable (not included) into the USB/Type-C Charging Port on the table and the other end into your device and the device will begin charging.

Note: The USB/Type-C charging port is for charging mobile devices.



Wireless Charging



Place your phone onto the **Power Pad** to begin charging.

Note: you may need to remove your phone case in order to begin charging.

Technical Specification

| | |
|---------------------|-------------------------|
| Power source | INPUT : DC 18V --- 2.5A |
| Wireless charging | OUTPUT : 10W MAX |
| USB/Type-C charging | OUTPUT : DC 5V 2.1A |
| Dimiensions | 420x420x600mm |