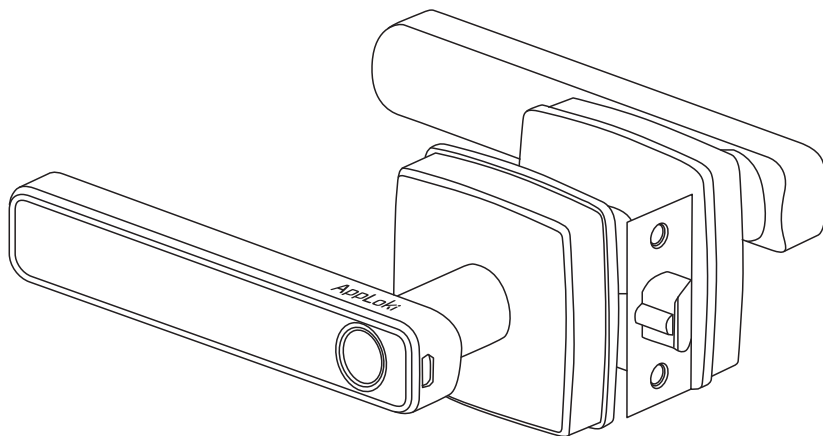




# USER MANUAL

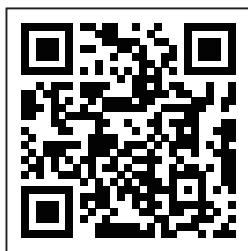
## N1TY Smart Lock



### Note :

1. This lock is equipped with mechanical keys for manual unlocking. Remove mechanical keys from the package and keep them in a safe place and always have access to them.
2. To power on the lock, 4 x AAA Alkaline batteries (not included) are required.
3. This lock is used outdoors and indoors, it is designed to be exposed to direct sunlight or rain. The waterproof rating: IP65
4. Keep your fingers clean when using this lock.

Please read this manual before operating the smart lock, and keep it for further reference.



Please scan the QR code  
to watch instructional videos!

## Product Profile

### App Control Door Lock via Bluetooth

This smart lock uses the latest technology to make your life easier. It can be operated via bluetooth using the mobile App, it's suited for Homes, Apartments, Offices Airbnbs, Motels, Holiday Homes, etc.

### Specifications

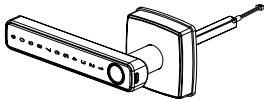
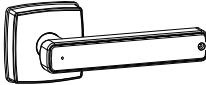
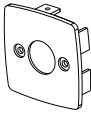
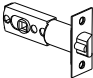





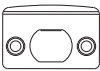
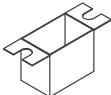
Material	Zinc Alloy	Model NO.	N1TY
Door thickness	38mm-50mm	Code Length	6~10 digits
Working Temperature	-20°C~70°C	Working Humidity	20%~80%RH
Working Power Consumption	<200mA	Static Power Consumption	<30uA
Power Supply	6V (4 x AAA Alkaline Batteries)		
Unlocking Methods	App, Fingerprint, Password & Mechanical Key		
User Capacity	Totally 255 fingerprint / password / temporary password users (100 fingerprint users at most)		
Product Dimension	Front / Back panel	65 x 65 mm	
	Handle Length	167 mm	

★ All specifications are subject to change without notice. All rights reserved.

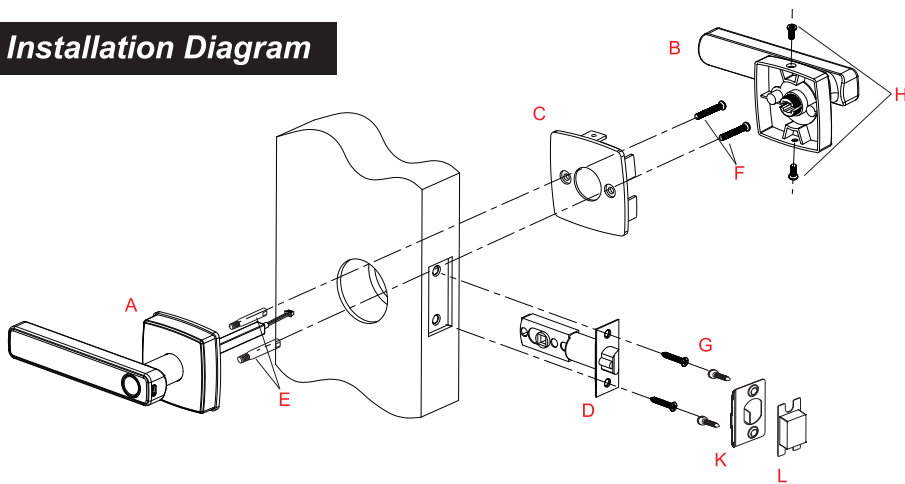
## Features

- **Four Ways to Access the Lock:** App Access, Fingerprint, Password & Mechanical Key.
- **Rugged:** Zinc alloy body and strong handle design prevents forcible entry.
- **Idling Lock Handle Design:** When the door is locked, the clutch is in idle position, the front handle will be turned. However, the door will remain locked.
- **Battery Dead Alarm:** If the batteries are running low, the door lock will inform you through sound prompts. You can also check battery level on the mobile App.
- **Emergency Power Supply:** Emergency power supply interface equipped on the side of the front handle: to unlock the lock temporarily by connecting to the emergency power supply interface with a backup battery connect by USB cable.
- **Real Time Record:** You can check unlock records in real time on your App.

## Packing List

<b>A</b> 	<b>B</b> 	<b>C</b> 	<b>D</b> 		
<b>E</b>  40mm	<b>F</b>  30mm	<b>G</b>  25mm	<b>H</b>  8mm	<b>J</b> 	<b>K</b>  <b>L</b> 

## Installation Diagram



A) Outdoor lock body \* 1

B) Indoor lock body \* 1

C) Mounting plate \* 1

D) Single latch \* 1

E) Cylindrical sleeve bolt \* 2

F) M4 x 30mm cross flat head bolt \* 2

G) M4 x 25mm

cross flat head self-tapping screw \* 4

H) M4 x 8mm cross flat head bolt \* 2

J) Mechanical key \* 2

K) Strike plate \* 1

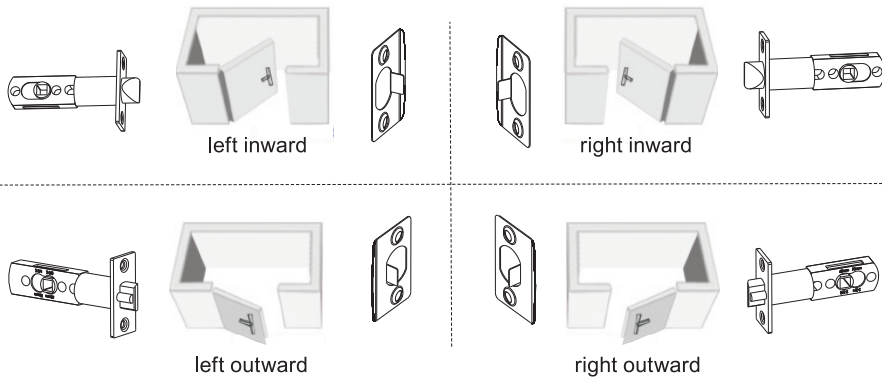
L) Latch holding plastic box \* 1

## Door Preparation

1. Check door thickness and Door Frame.

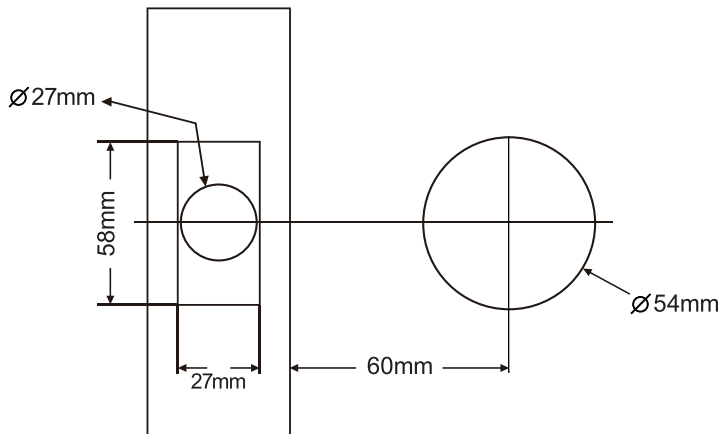
- Door frame  $\geq 110\text{mm}$
- Door thickness: 38~50mm

2. Check door open direction.



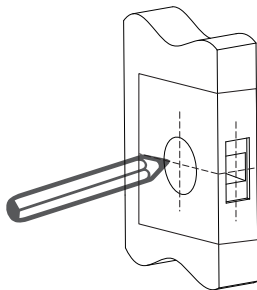
- **Note:** Please refer the above picture to adjust the direction of strike plate (K) and latch (E).

## Installation Template



# Installation Instructions

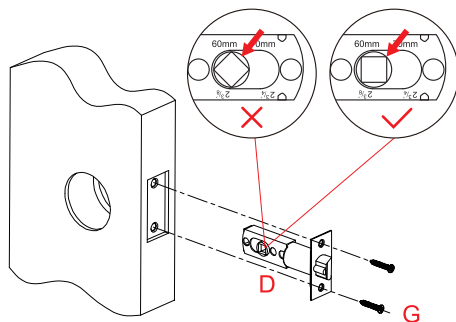
## Step 1 According to the map drilling holes on the door



• **Note:**

- 1) Check the required backset (60mm or 70mm).
- 2) Align the template along the vertical center line of the single latch (D) at the desired height, and tape it to the door.
- 3) Mark the holes first, then start drilling.

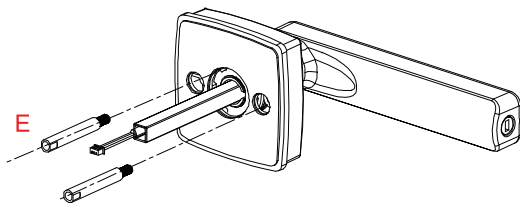
## Step 2 Install the single latch (D) with screws (G)



• **Note:**

The single latch has TWO backset options: 60mm or 70mm, please adjust it by yourself. Before installing the latch (D) on the door, please make sure that the square inside the latch (D) is facing up, otherwise it cannot match the outdoor lock body (A).

## Step 3 Fixed bolts (E) on outdoor unit (A)



e door

Backset (60mm or 70mm).

ing the vertical center line of the  
ired height, and tape it to the door.  
en start drilling.

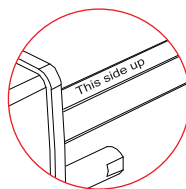
)

e:

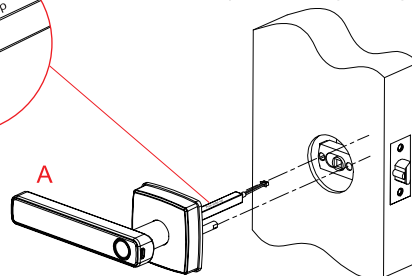
single latch has TWO backset  
ons: 60mm or 70mm, please  
ist it by yourself.

ore installing the latch (D) on the  
r, please make sure that the  
are inside the latch (D) is facing  
otherwise it cannot match the  
door lock body (A).

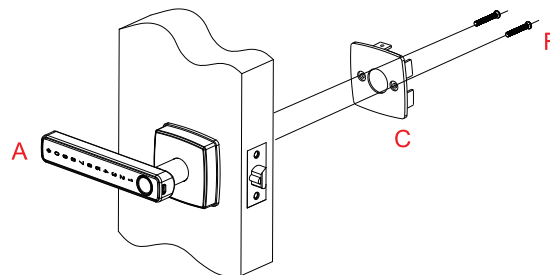
#### Step 4 Install outdoor unit (A)



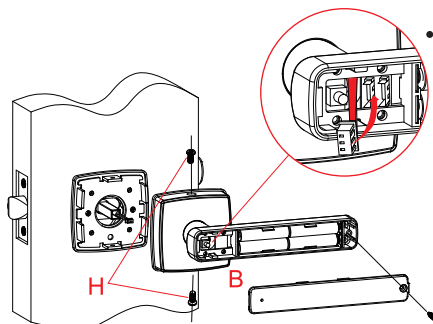
- **Note:** When installing, make sure that the side with the text "This Side Up" on the square spindle must be upward.



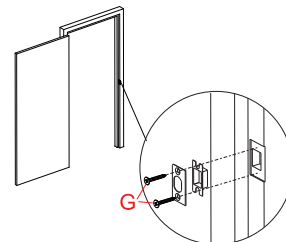
#### Step 5 Install mounting plate (C) on the door



#### Step 6 Install indoor unit (B) on the door



- **Note:** Cable goes through the square hole of back handle.



- **Note:** Install 4 x AAA Alkaline batteries.

## Pair the Lock with Tuya App

### 1. Tuya App Installation and Account Registration

- 1.1. Download the “Tuya Smart” App from Google play store or Apple store.
- 2.2. Install and register an account with your phone number or email.


Note:

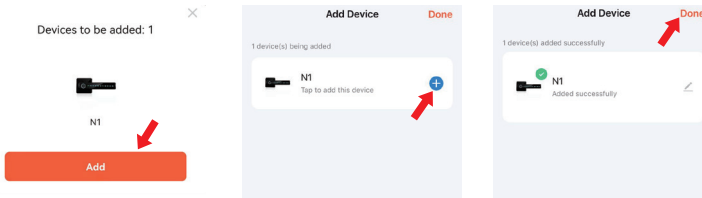
The App supports Android 4.3 / IOS7.0 version and above.




Scan the QR code to  
download the App

### 2. Pair the lock with Tuya App

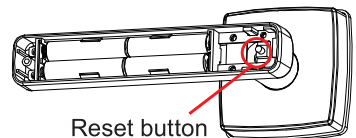
- 2.1. Turn on the Bluetooth on your phone.
- 2.2. Open Tuya Smart App on your phone, touch and activate the keyboard of lock. App will automatically search and display device that can be added. When you see the device (named “N1”), click “Add”, click icon  and click “Done”, the lock will be added successfully. You can rename the lock.



You can also add the lock manually: Open App - click “Add device” – “Security & Video Surveillance” under “Electrical” bar – click the icon “Lock(BLE)” – “Next” – click icon  and click “Done” - the lock added successfully.


Note:

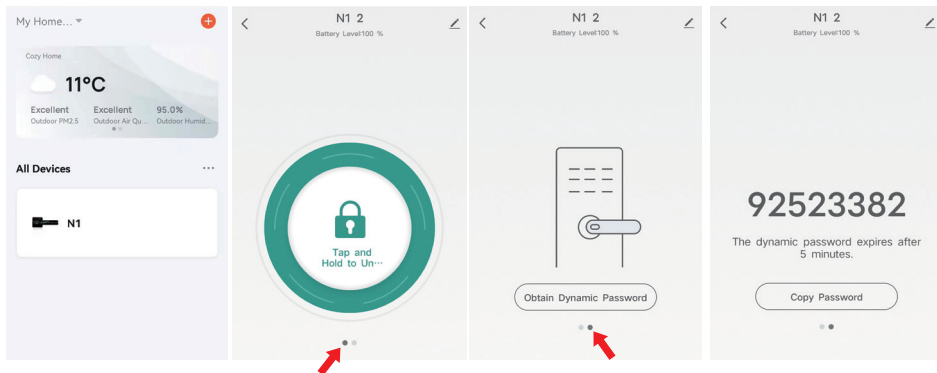
1. After successfully pairing, Tuya App on your phone becomes Administrator of the lock.
2. If you do not find the lock on App when pairing, please reset the lock first: Remove the battery cover on indoor lock body, keep pressing the reset button for about 5 seconds, keyboard lights up and long “Beep” once. Then you can pair the lock by following the steps above.
3. Once you pair the lock with your App account, the lock will not be able to link to other accounts, unless you remove the lock from your App.





## Lock's Operation on App

After pairing the lock with App, you can find the lock on the home page of App. Click the lock N1 to enter operation page of lock. You can press the icon  or input Dynamic Password on the lock to unlock.



- **Note:** When you unlock the lock with password, please press # after entering the password.

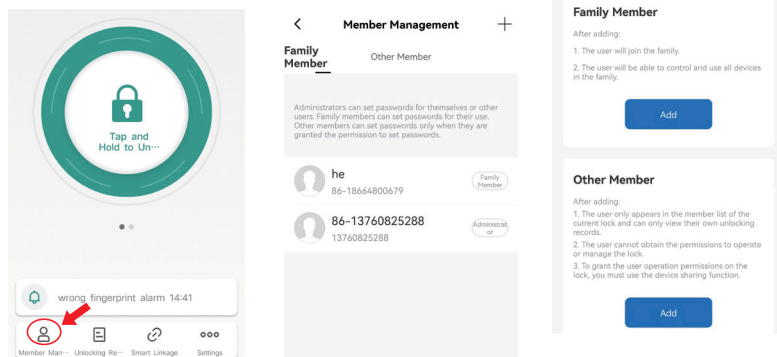
### 1. Member Management

(You can skip this setting first and directly set up fingerprint/password.)

There are two types of members in member management: family member and other member.

You (Administrator) can add users as family members or other members.

(**Note:** Whether it is a family member or other member, they need to register a Tuya account)



## 1.1. Administrator Manage Family Member

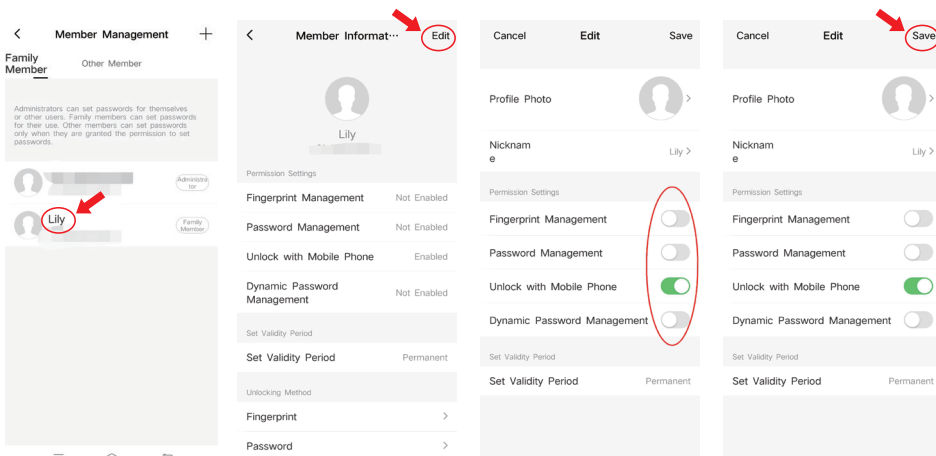
### 1.1.1. Permission Settings

Administrator can turn on or off the management permissions of passwords, fingerprints, unlock with mobile phones, and dynamic password for family members

(**Note:** via bluetooth, keep your phone close to the lock, if there is a Tuya gateway, it can be set remotely)

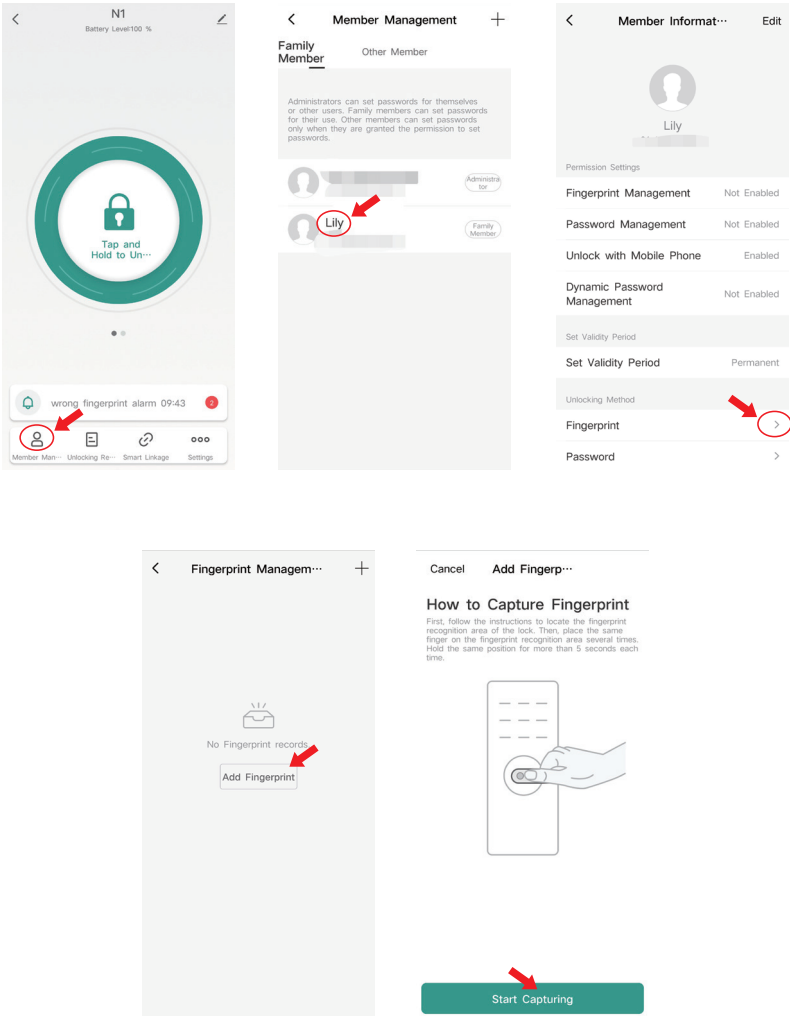
Follow the path below to set up permission:

Member Management—Name of family member—Edit—Permission Settings—Save

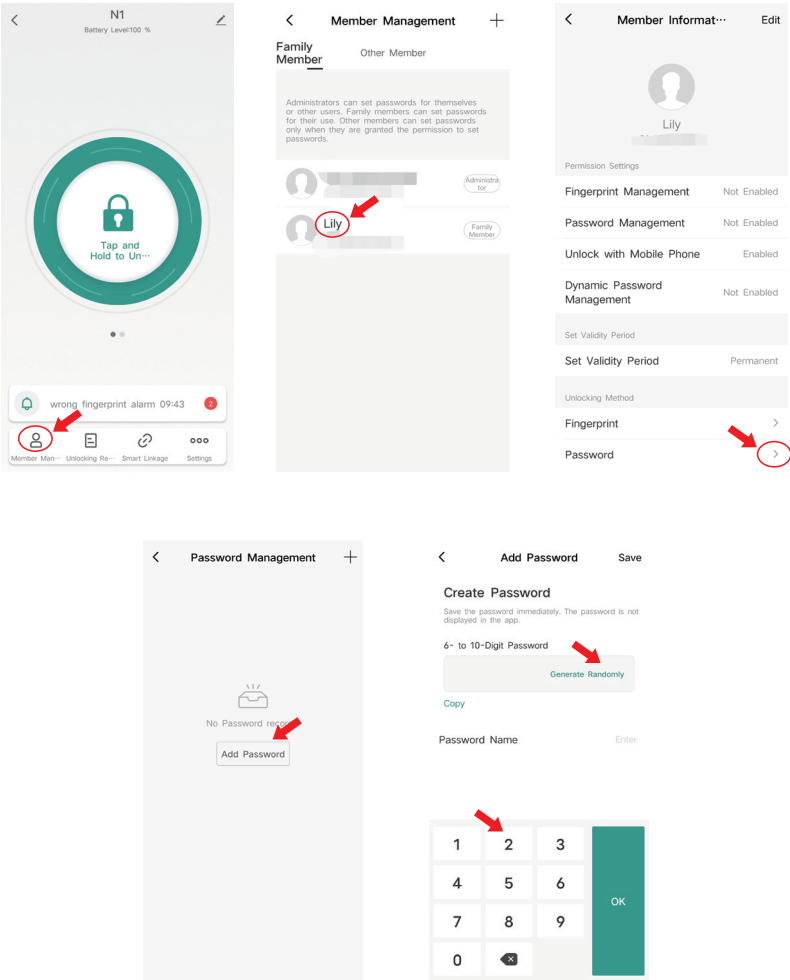


1.1.2. Set Unlock Methods

Follow the path below to set up fingerprints for family member:  
Member Management—Name of family member—Fingerprint—Add Fingerprint—Start Capturing



Follow the path below to set up password for family member:  
Member Management—Name of family member—Password—Add Password —Create Password



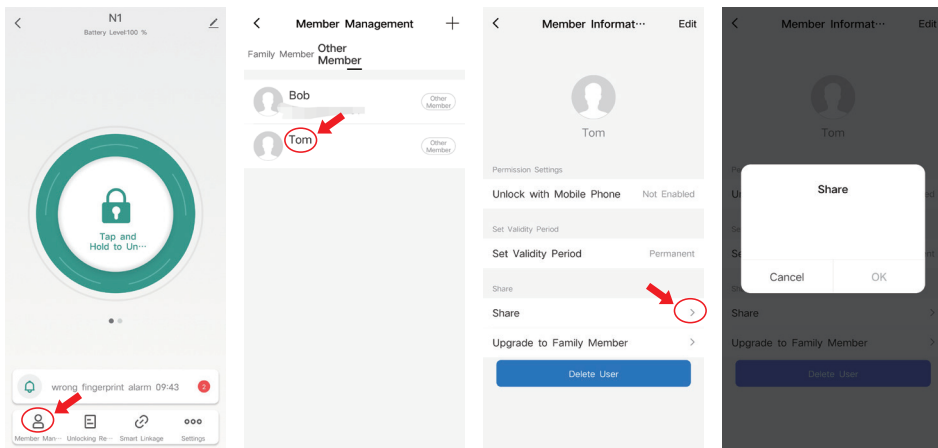
## 1.2. Administrator manage other member

### 1.2.1. Share the Lock on the APP

Only when the administrator shares the door lock on the APP with other members and enables the permission, other members can use the APP to unlock.

Follow the path below to set up sharing:

Member Mmanagement—Name of other member—Share—Enter the Tuya account of other member—OK

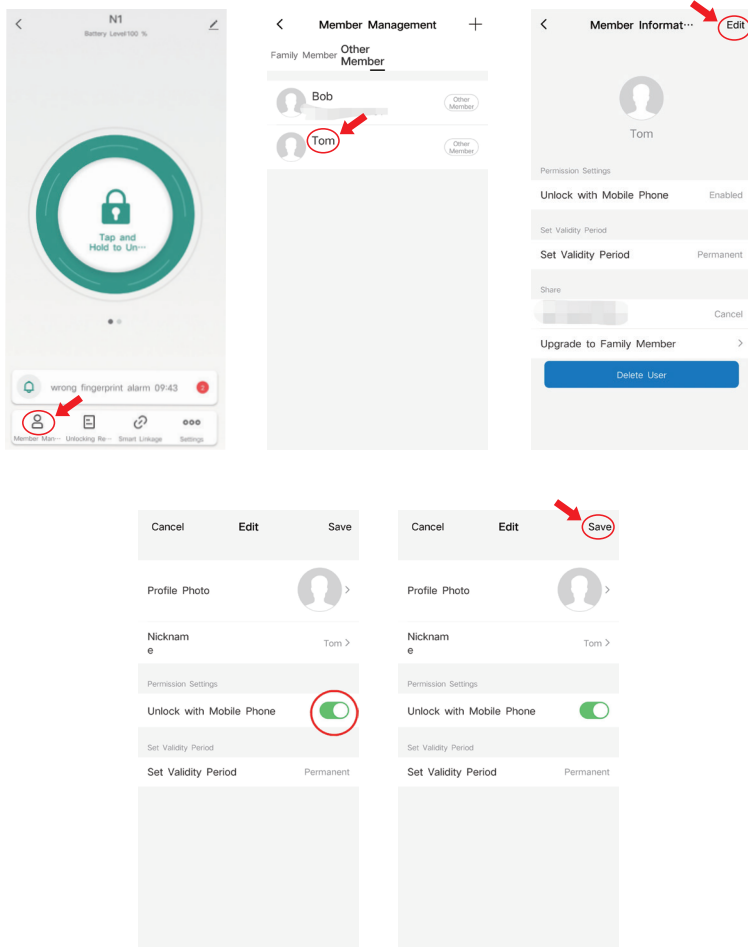


## 1.2.2. Permission Settings

Administrator can turn on or off the permission of unlock with mobile phones for other member (**Note:** via bluetooth, keep your phone close to the lock, if there is a Tuya gateway, it can be set remotely)

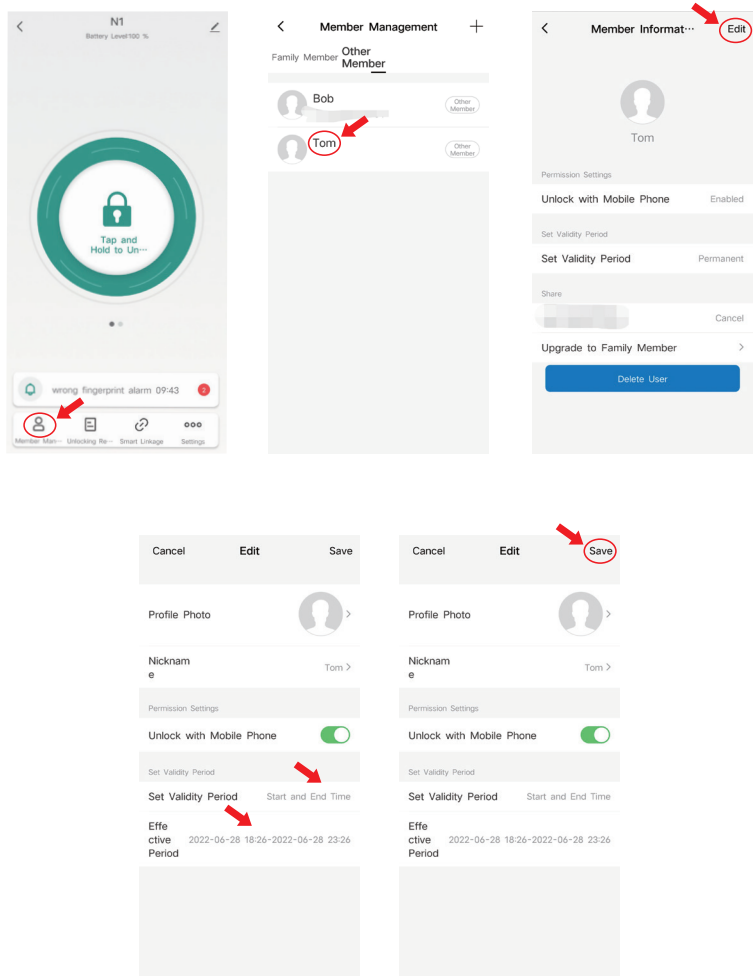
Follow the path below to set up permission:

Member Management—Name of other member—Edit—Permission Settings—Save



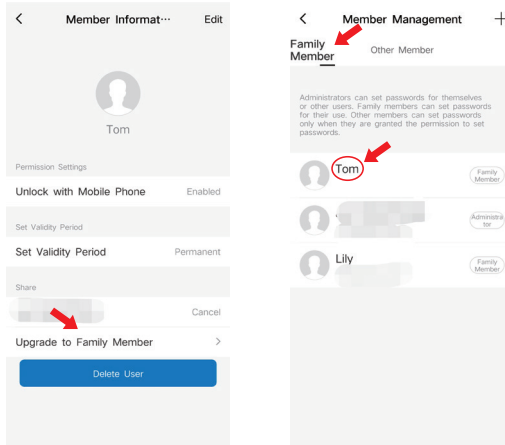
1.2.3. Set Validity Period

Valid period can be set to be permanent or timed.



#### 1.2.4. Upgrade to Family Member

You can upgrade other member to family member.



#### 1.3. Family Member

- Validity: Once added, the permission of the family member is permanent until the administrator removes the member. Family member will be able to control and use all devices in the family.
- Unlock method: password, dynamic password, fingerprint, APP (**Note:** Via bluetooth, the phone needs to be close to the door lock, if there is a Tuya gateway, it can be set remotely.) If the administrator closes all unlock permissions, family member can no longer add his own unlock method.

**Note:** If the door lock is connected by other mobile phones via bluetooth at this time, it cannot be unlocked by bluetooth. Only when the door lock is not connected by other mobile phones via bluetooth can it be unlocked by bluetooth.

#### 1.4. Other Member

- Validity: Administrator can set the valid period of permission for other members. Valid period can be set to be permanent or timed.
- Unlock method: APP (**Note:** Via bluetooth, the phone needs to be close to the door lock, if there is a Tuya gateway, it can be set remotely.) If the administrator closes all unlock permissions, other member can no longer add any unlock method.

**Note:** If the door lock is connected by other mobile phones via bluetooth at this time, it cannot be unlocked by bluetooth. Only when the door lock is not connected by other mobile phones via bluetooth can it be unlocked by bluetooth.

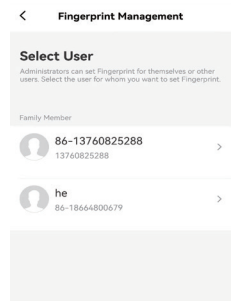
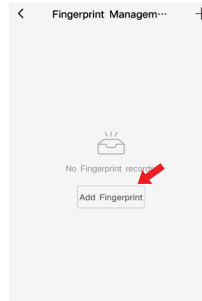
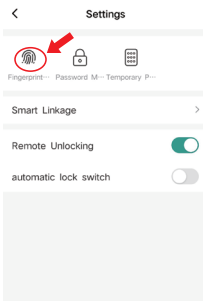
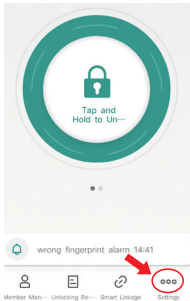


## 2. Settings

You can set fingerprint / password / temporary password for unlocking on App.

### 2.1. Fingerprint

You can set your own fingerprint, or set fingerprint for member users by following steps: Fingerprint Management - Add Fingerprint - Select User – Start Capturing – Place your finger on recognition area of lock (need to repeat several times) –Name it & click Done



#### How to Capture Fingerprint

First, follow the prompt to locate the fingerprint recognition area of the lock. Then, place the same finger on the fingerprint recognition area several times. Hold the same position for more than 5 seconds each time.



Place your finger on the fingerprint recognition area of the lock and remove it when prompted. Repeat this procedure several times.



Captured.

Fingerprint Name

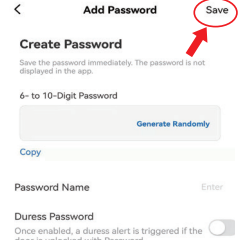
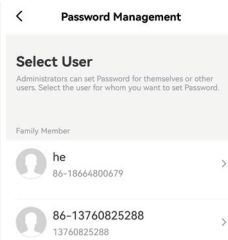
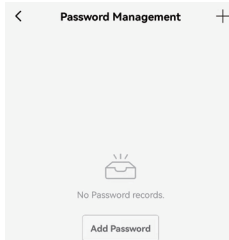
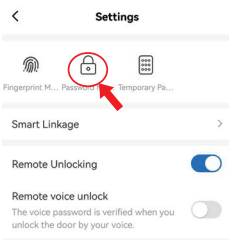
Enter

Start Capturing

Done

### 2.2. Password

The password length should be 6~10 digits. You can set your own password, or set password for member users by following steps: Password Management - Add Password - Select the User – Create Customized or Random Password - Save



## 2.3. Temporary Password

- Online Password (near the lock when setting)

Bluetooth should be turn on when you set the online password. The password can be customized or random password.

One-Time Password: The password can be used only once before it expires.

Periodic Password: The password can be used multiple times before it expires.

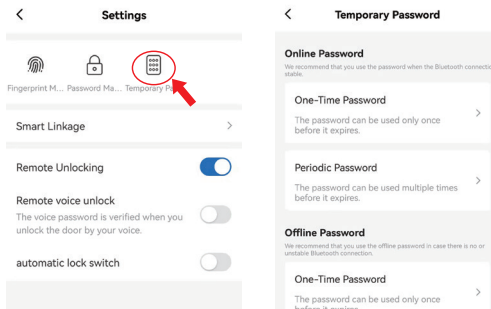
- Offline Password (need not near the lock when setting)

Bluetooth does not need to be turned on when you set the offline password. The password will be created randomly.

One-Time Password: The password is valid for 6 hours from generation and can be used only once before it expires.

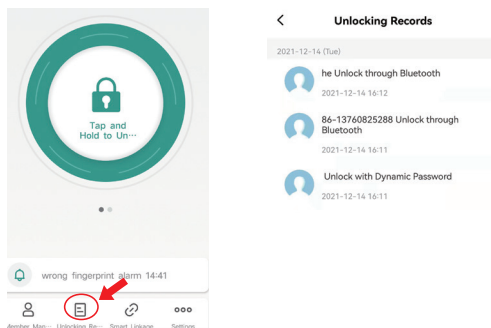
Time-Limited Password: The password should be use at least once within 24 hours after it takes effect. Otherwise, the password will becomes invalid.

Clearing Code: It can only clear time-limited offline passwords used at least once.



## 3. Unlocking Records

To view unlocking records.



## Passage Mode

- The lock is auto-lock for default. It means that the lock will lock automatically 5 seconds after unlocking.
- Passage mode, the lock will not lock automatically (The door lock is unlocked) until you press # to lock or turn off passage mode.

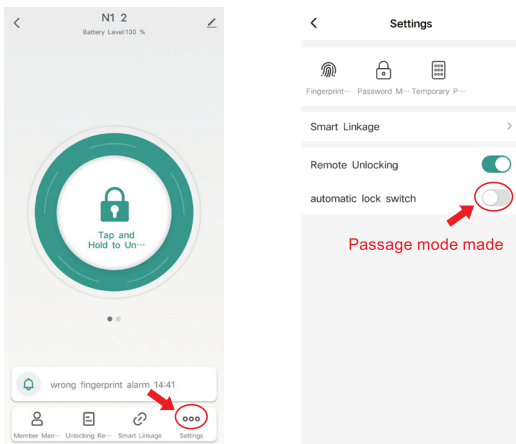
### 1. Turn on the Passage Mode

There are two methods to turn on the passage mode.

Method 1: Set to APP

Follow the path below to turn off the button of automatic lock switch:

Settings—Turn off automatic lock switch




**Note:** Your phone should be nearby the lock when setting passage mode via APP.

Method 2: Set on the lock

Step	Operation	System Prompt
1)	Press “ 28# ” on the lock	The fingerprint unlocking part bright purple light
2)	When the purple light is on, please unlock the lock via any one of ways below: 1. Fingerprint (any one of first three fingerprints you set) 2. Password (any one of first three passwords you set)	
	After the above two steps, passage mode is on.	

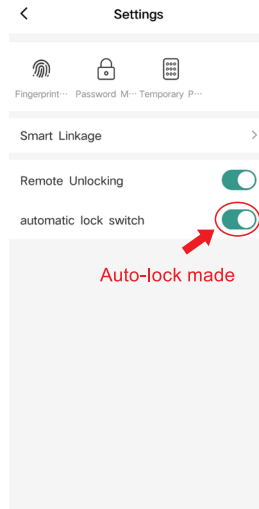
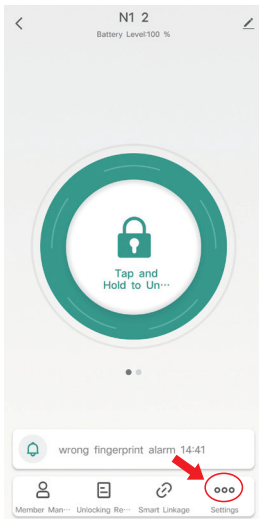
## 2. Turn off the Passage Mode

When passage mode is on, you can turn off the passage mode via any one of methods below:

- 1). Press # key on the lock
- 2). Fingerprint (place any one of fingerprints you set on the lock)
- 3). Password (enter any one of passwords you set and press # on the lock)
- 4). Long press the app icon  for 2 seconds on APP (keep your phone close to the lock)
- 5). Turn on the button of automatic lock switch.

Follow the path below to turn on it:

Settings—Turn on automatic lock switch

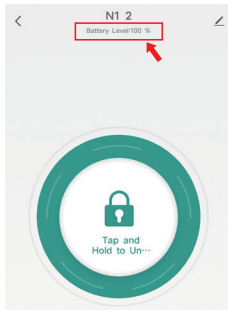


## The Wisdom of Life

### 1. Low Battery Warning

If the battery voltage is lower than 3V, the lock will beep and the place where the fingerprint is unlocked will flash red for 3 seconds.

At the same time, you can check the power of the door lock at any time in the mobile APP. (**Note:** via bluetooth, keep your phone close to the lock, if there is a Tuya gateway, you can view it remotely)



### 2. Smart Linkage

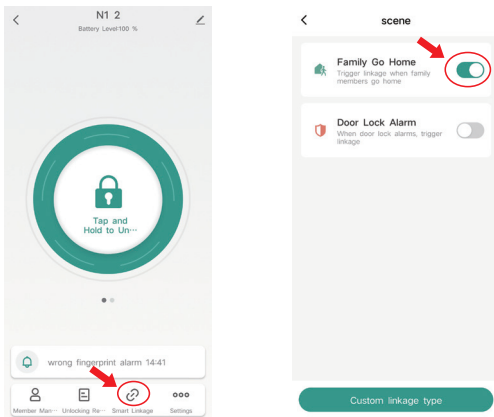
#### 2.1. Family Go Home

When you turn on the switch of family go home on Tuya APP, the family member (Family member that need to be added to the app) unlocks the door, and your mobile phone will have a message to notify you that a family member go home.

(**Note:** via bluetooth, keep your phone close to the lock, if there is a Tuya gateway, you can view and set it remotely.)

The set path is as follows:

Smart Linkage—Turn on Family Go Home Switch



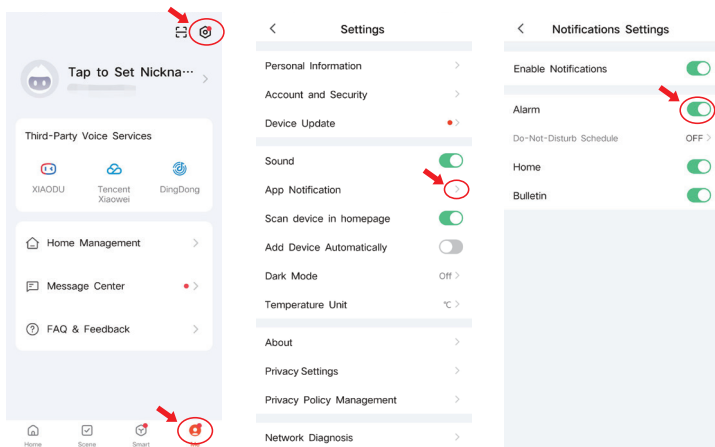
## 2.2.Door Lock Alarm

When you turn on the door lock alarm switch, when the battery power is too low, the password or fingerprint is entered incorrectly 5 times, the phone will send a message to notify you. (You need to open the Tuya APP to see it)

**Note:** via bluetooth, keep your phone close to the lock, if there is a Tuya gateway, you can view and set it remotely.

The set path is as follows:

Me——App Notification—Alarm

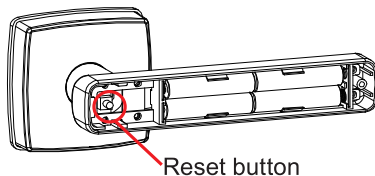


## Restore Factory Settings

There are two methods to reset the lock.

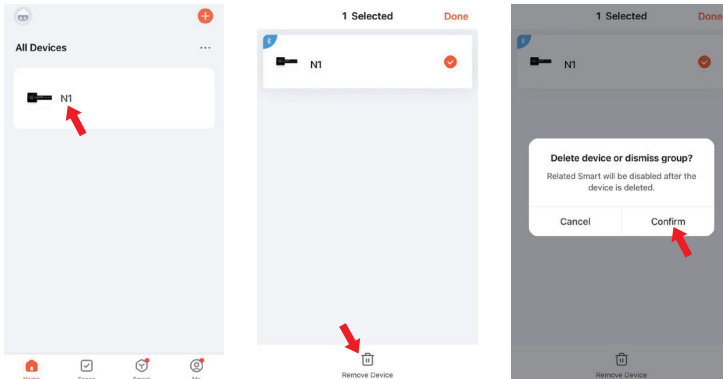
### Method 1: Reset on the lock

Remove the battery cover on inside body - Keep pressing the reset button for 5 seconds  
- keyboard lights up and the system prompts long “Beep” once - Reset successfully



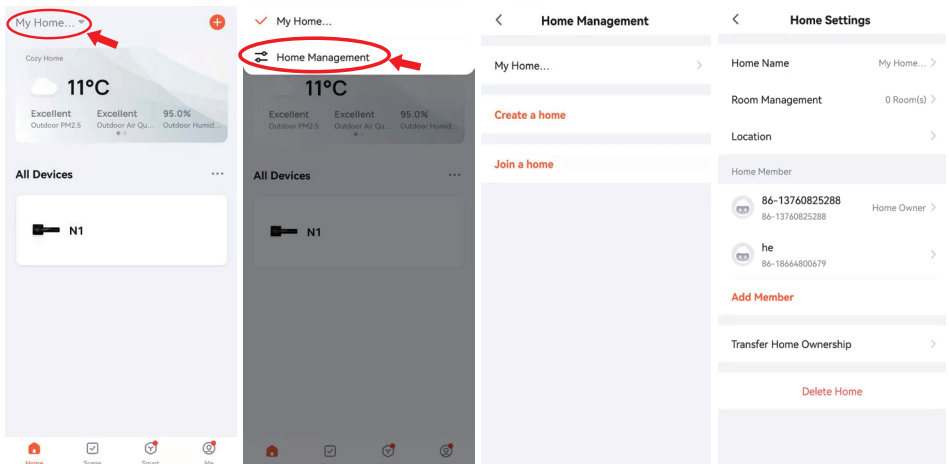
## Method 2: Remove the lock on App to reset

1. Find the lock on home page of App.
2. Long press the lock's name for 1 seconds.
3. Click "Remove Device" at the bottom of the interface.
4. Click "Confirm" in the pop-up window. Reset successfully.



## Home Setting

Click upper right corner of Home Page - Home Management, then enter Home Settings. On the page of Home Settings, you can set "Home Name", "Room Management", "Location", manage your "Home Member", transfer the "Home Ownership".



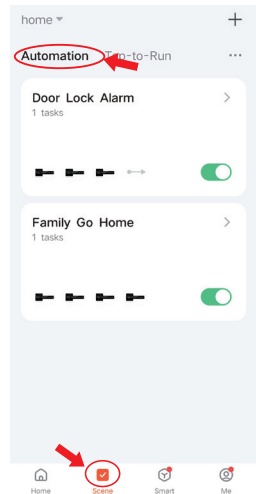
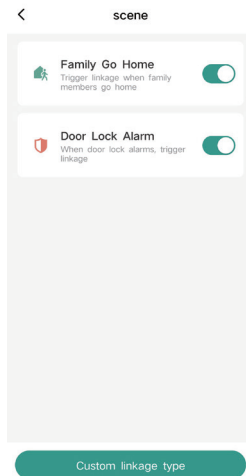
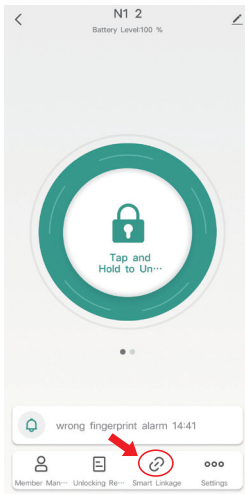
## Other Functions of Tuya Smart

### 1. Scene

#### 1.1. Automation

Save your time and effort by automating routine tasks.

You can turn on the switch of Family Go Home and Door Lock Alarm in Smart Linkage, so that as soon as you turn on your phone and come to the automation page, you can set it directly.





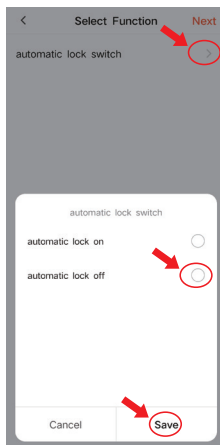
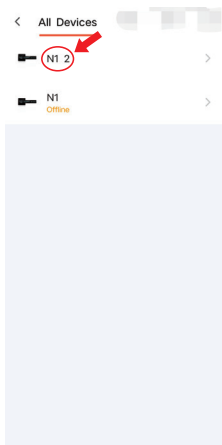
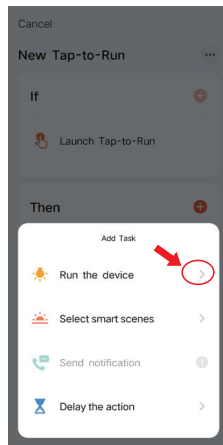
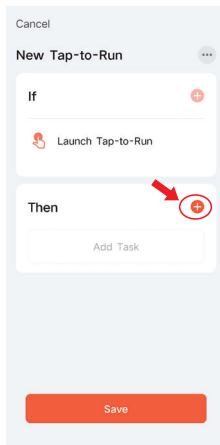
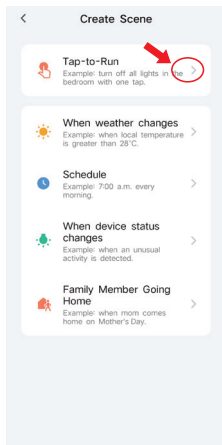
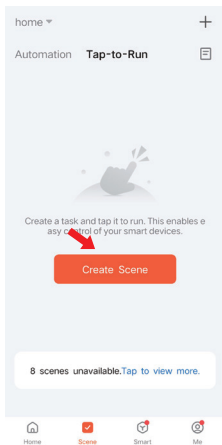
## 1.2. Tap-to-Run

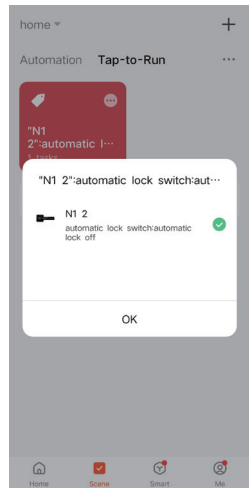
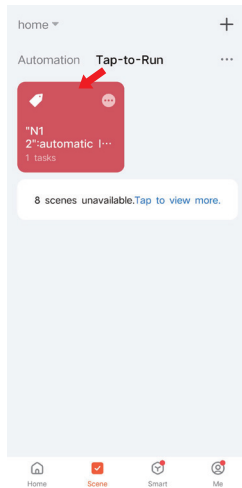
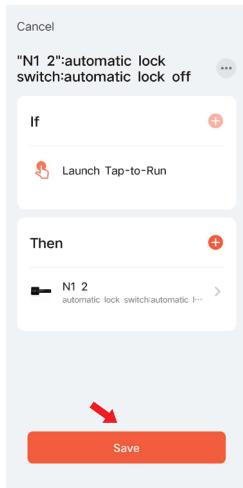
Create a task and tap it to run.

This function can open or close the passage mode at one tap.

The set path is as follows:

Scene—Create Scene—Tap-to-Run—Then—Run the device—Select the door lock to set—automatic lock switch—automatic lock on/off—Save—Next—Save





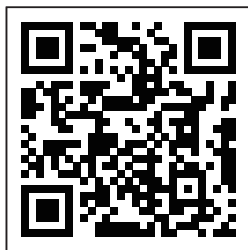
**More functions of Tuya Smart are waiting for you to discover.**

## ***FCC Statement***

- This device complies with Part 15 of the FCC Rules. Operation is subject to the following two conditions: (1) This device may not cause harmful interference, and (2) this device must accept any interference received, including interference that may cause undesired operation.
- Warning: Changes or modifications not expressly approved by the party responsible for compliance could void the user's authority to operate the equipment.
- Note: This equipment has been tested and found to comply with the limits for a Class B digital device, pursuant to Part 15 of the FCC Rules. These limits are designed to provide reasonable protection against harmful interference in a residential installation.

## ***Warranty***

- We provide 30 days worry-free money back and one year limited warranty.
- Any problem, please feel free to contact us.  
E-mail us at: AppLoki@yeah.net



Please scan the QR code  
to watch instructional videos!