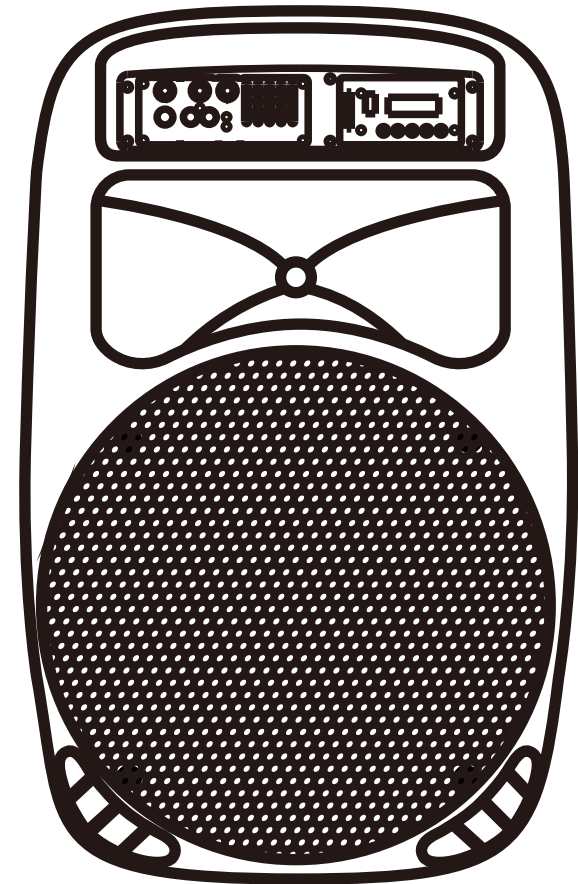


PRORECK

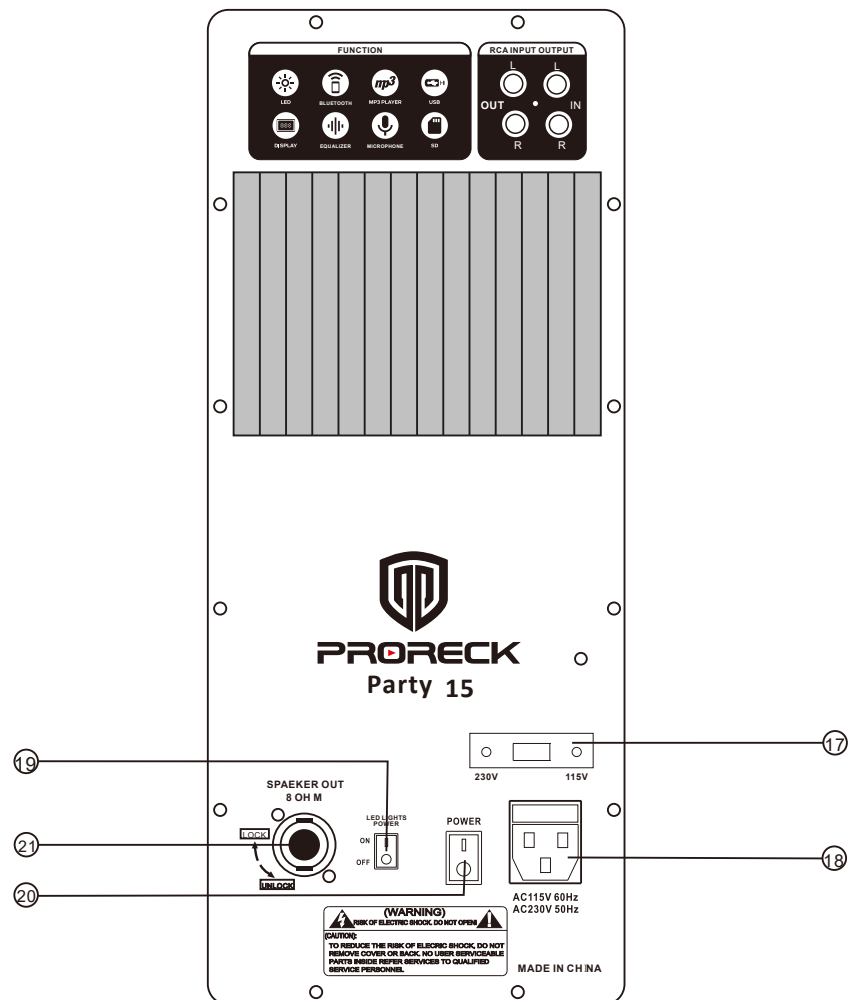
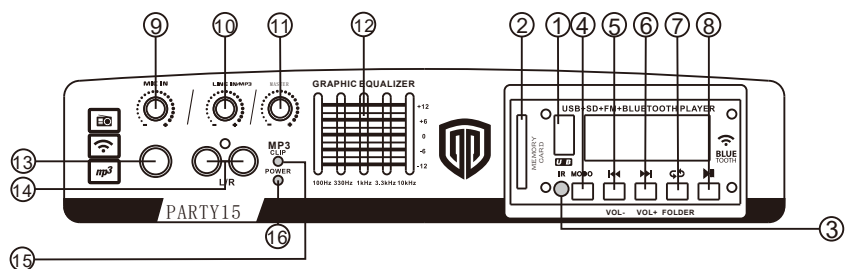


PRORECK

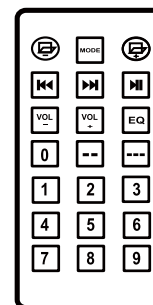
OWNER'S MANUAL



PARTY 15



Remote Control Function



Press these buttons to access the previous(-) or next(+) folder when using USB/SD mode.



Press this button to switch between USB/SD, FM, BLUETOOTH and modes. Press this button to go to the previous or next song or channel when using USB/SD or FM mode.



Press this button to play or pause the MP3 song when using USB/SD mode or select FM channel automatically.



Press this button to decrease(-) or increase(+) the volume.



Press this button to select from 5 preset EQs: POP, ROCK, JAZZ, CLASSIC and COUNTRY.



Press this button to select songs by 10 digit numbers.



Press this button to select songs by 100 digit numbers.

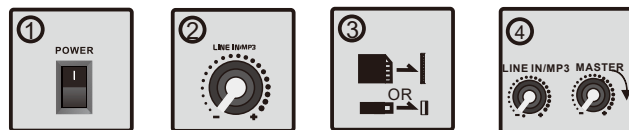
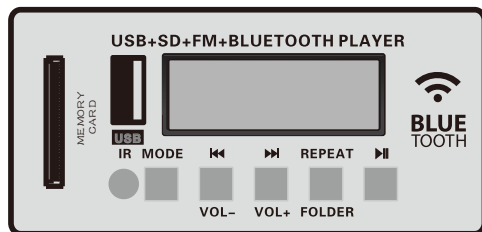


Press these number buttons to select the MP3 files.

PRORECK AUDIO, INC
brand@proreck.com
www.audioproreck.com

APPLICATION USES

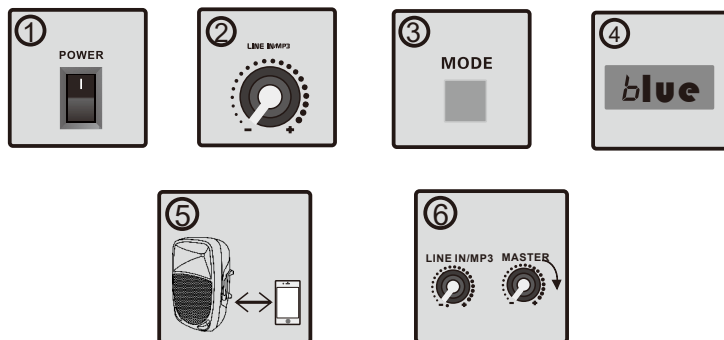
SD and USB Insert Instructions



1. Turn on the power.
2. Turn the LINE IN/ MP3 button to the minimize level.
3. Insert SD card or USB memory storage device.
4. Turn the MP3/LINE IN and MASTER button to a suitable level respectively.

NOTE: Mp3, cellphone, ipad and PC can not be read by USB. You may connect them by BLUETOOTH or LINE IN function.

Bluetooth Usage

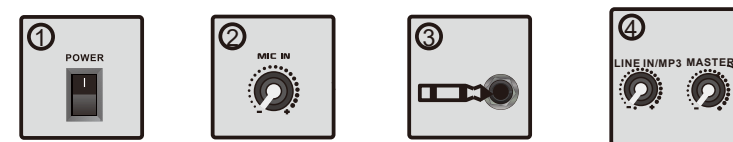


1. Turn on the power.
2. Turn the LINE IN/MP3 button to the minimize level.
3. Keep pushing the MODE button to find BLUE.
4. When in BLUE mode, the display will show BLUE.
5. Connect the device with BLUE function.
6. Turn the LINE IN/MP3 and MASTER button to a suitable level respectively.

When in the BLUE mode, you can connect your bluetooth device such as ipad, iphone or PC to the amplifier.

Note: Remember to turn up the volume of the connected device to a suitable level for a good sound effect.

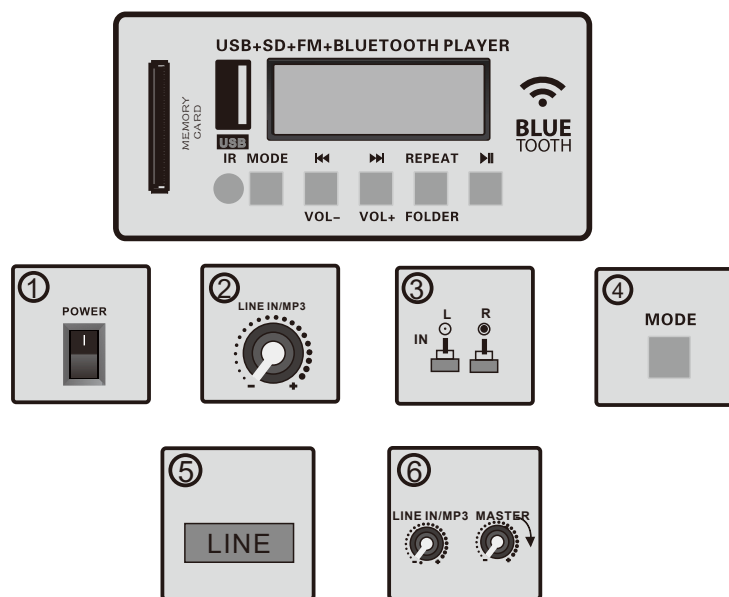
MIC Directionns



1. Turn on the power.
2. Turn the MIC IN level button to the minimize level.
3. Use 1/4" input jack Mic to insert.
4. Turn the MIC IN level button to a suitable level respectively.

LINE IN Mode

There are 2 line input. One is on the front panel, the other is on the rear pnel.



1. Turn on the power.
2. Turn the LINE IN/MP3 button to the minimal level.
3. Connect the music source unit to the RCA inputs marked LINE IN.
4. Keep pushing the MODE button to find LINE.
5. When in LINE mode, the display will show LINE.
6. Turn the LINE IN/MP3 and MASTER button to a suitable level respectively.

You can use the LINE IN function when you wish to link up an additional stereo signal source without the use of a mixer console, such as CD players, DVD music plays, MP3 players.

Note: Remember to turn up the volume of the connected device to a suitable level for a good sound effect.

1. USB port: Use it to insert the USB memory storage device with MP3 files.
2. SD port: Use it to insert the SD card with MP3 files.
3. Remote receiver.
4. Input mode: Select an input mode, BLUE/FM/LINE IN/MP3 player.
5. Press once to jump previous song or FM channel.
Press and hold to decrease the volume level.
6. Press once to jump next song or FM channel.
Press and hold to increase the volume level.
7. It is repeat button. We provide 4 modes Repeat all/ Repeat one/Random/ Folder Repeat all.
8. Press once to play or pause a song(MP3 mode)
Press and hold on to enter folder mode, the screen will show "FOLD".
then press ◀ or ▶ to choose your favorable music folder.
Press once to search radio stations and they can be saved automatically(FM mode).
9. Mic level control: Use this control to set the volume level of Mic in signal.
10. Line level control: Use this control to set the volume level of Line in signal.
11. MP3 level control: Use this control to set the volume level of Mp3 in signal.
12. Equalizer: designed for 12db cut or boost.
13. Mic Input: 1/4" connector for a unbalanced Microphone.
14. Line Input: Allow you to connect an external audio device through RCA jack.
15. Overload indicator: If the red LED ON constantly, low down the general volume control.
16. Power indicator.
17. 115V-230V selector.
18. AC power: Use it to connect the AC power cord.
19. LED light switch. Note: The built-in LED lights only work with music rhythm at certain volume level. P.S. If the lights don't work, please try turning up the volume.
20. ON/Off power switch.
21. Speaker out: It is SPEAKON jack, use it to connect another passive speaker.
22. Line Output: Allow you to connect another active or mixer console through RCA jack speaker.
23. Line Input: Allow you to connect an external audio device through RCA jack.