

Grelife



User Manual

WARM AND COOL MIST HUMIDIFIER

Read And Save These Instructions

CONTENTS

STATEMENT	01
SAFETY INSTRUCTIONS	01
BEFORE USING THE HUMIDIFIER	01/02
WHEN USING THE HUMIDIFIER	03
AFTER USING THE HUMIDIFIER	04
PACKAGE CONTENTS	04
FEATURES	05
SPECIFICATIONS	05
PRODUCT DIAGRAM	06
OPERATION AREA	07
OPERATIONS AND FUNCTIONS	08
Add water	08
Power On / Off and Mist Adjustment	09
Standard Mist Mode / Mist Level Adjust	09
Constant Humidity Mode	10
Warm Mist Mode	10
Timer Mode	10
Light Control	10
Sleep Mode	10
CLEANING AND MAINTENANCE	11
Daily Maintenance	11
Weekly Maintenance	11
Cleaning The Water Tank	12
Cleaning The Sealing Ring	12
Cleaning The Sink	12
TROUBLESHOOTING GUIDE	13/15
WARRANTY & CUSTOMER SUPPORT	15

STATEMENT

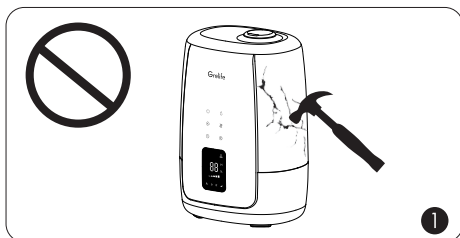
Thank you for purchasing the Grelife LE-H003 Warm and Cool Mist Humidifier. Please read this user manual carefully and keep it for future reference. If you need any assistance, please contact our support team with your product model number and order number.

SAFETY INSTRUCTIONS

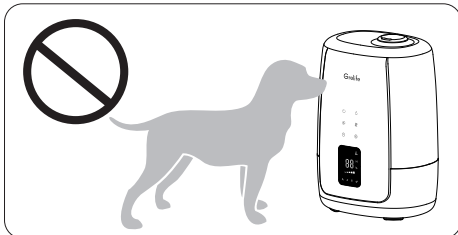
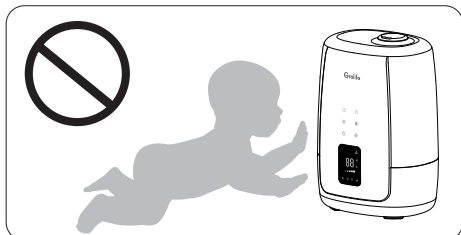
The humidifier was made with safe and environmental protection materials, it has been certified and complied with the requirement of sale regions' related regulations or laws.

IMPORTANT: Please read and save this SAFETY INSTRUCTIONS before using the device. Basic precautions should always be followed to reduce the risk of fire, electrical shock, and injury to persons or damage to the product.

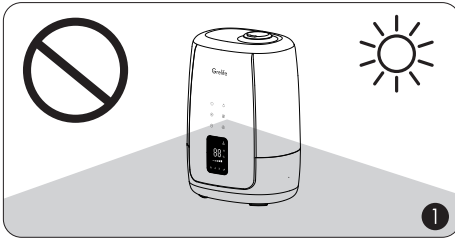
BEFORE USING THE HUMIDIFIER



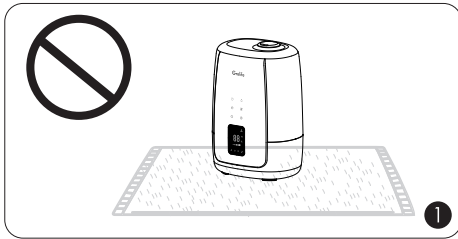
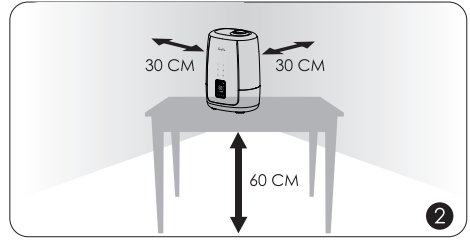
1. A collision with a hard object may cause the product to rupture, please handle with care and do not hit the hard object.
2. DO NOT place this humidifier in wet environments.



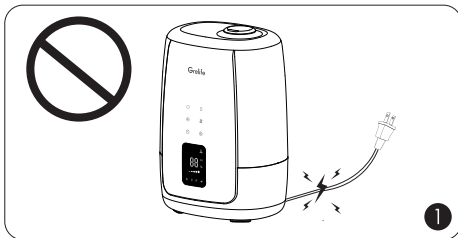
Please always keep the humidifier out of reach of patients & children & pets.



1. Please always place the unit on a smooth, flat, lint-free, non-metallic, waterproof and level surface and keep it away from direct sunlight.
2. Always place the unit 2 feet (60 cm) above the floor, 12 inches (30 cm) away from the wall, other appliances or wooden furniture.

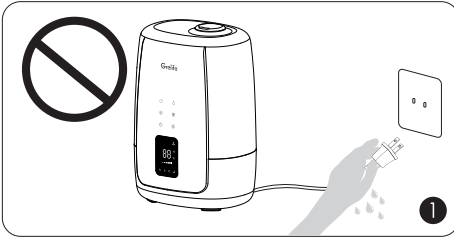


1. DO NOT place the unit on carpet, towel or wood surface, which will block the vent and may damage the unit.
2. DO NOT place the humidifier near naked flames and heat sources, such as stove tops, ovens, radiators or computers.

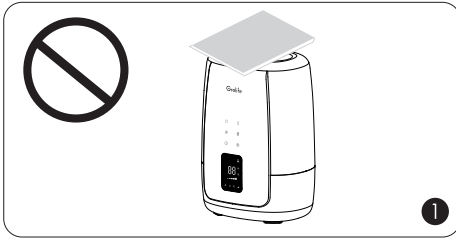


1. Please extend the cord and check any signs of damage. Do not use the humidifier if the cord has been damaged.

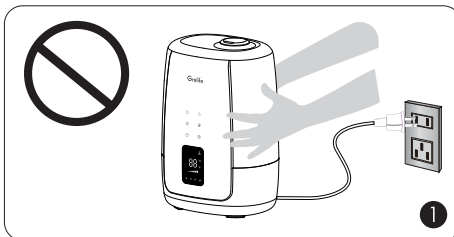
WHEN USING THE HUMIDIFIER



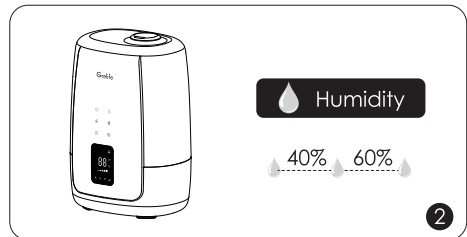
1. DO NOT plug the unit with wet hands.
2. DO NOT direct the mist nozzle against the wall.



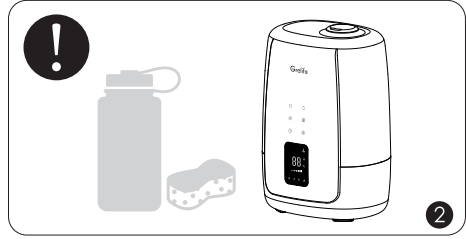
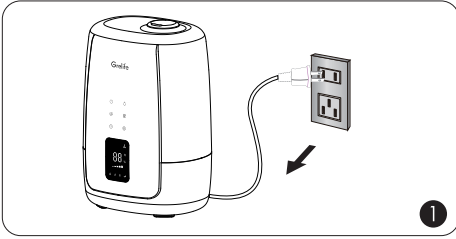
1. DO NOT use your hand or any other object to cover the nozzle while the unit is on to avoid damaging the product or causing injury.
2. DO NOT clean the unit while it is connected to a power source or while it is on.



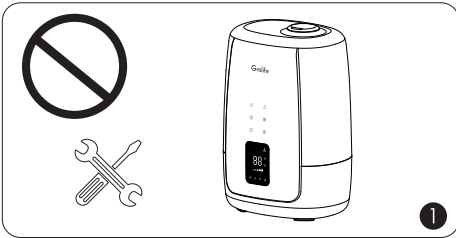
1. DO NOT move or tilt the humidifier while it is in operation.
2. The most comfortable environmental humidity is between 40%-60%. Please adjust the mist as needed.



AFTER USING THE HUMIDIFIER



1. Always disconnect from a power source by pulling the plug when not in use.
2. Humidifier requires regular cleaning. Please refer to, and follow the Cleaning and Maintenance instructions.



DO NOT attempt to repair or adjust any electrical or mechanical functions on this humidifier.

PACKAGE CONTENTS

- 1 x Humidifier (Model: LE-H003)
- 1 x User Manual

FEATURES

1. Top-fill Water Tank Design

Make filling and cleaning easier

2. Five-speed Mist adjustment

Set your desired humidity level

3. 360° Rotary Nozzle

Turn the mist output toward any direction

4. ULTRASONIC COOL & WARM MIST

Stay cozy and comfortable whilst breathing properly all year round

5. LARGE LED DIGITAL SCREEN

Easily get functions like humidity, temperature and settings easily

6. Auto Shut Off Protection

Stop working automatically when out of water

7. 5L Transparent Water Tank

Conveniently observe the surplus water at any time

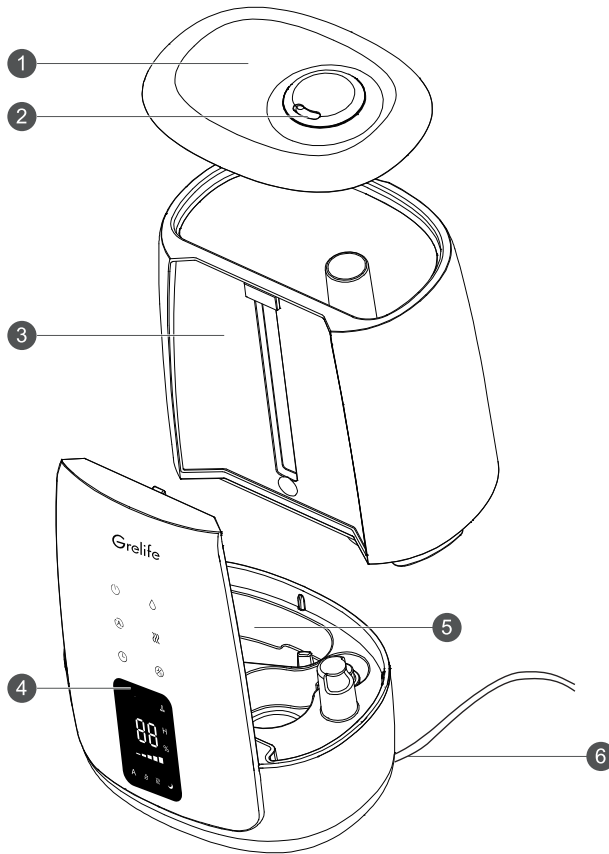
8. Timer Function

12 Hours timer settings for the appropriate working time

SPECIFICATIONS

Model	LE-H003
Operating Voltage	AC 120V/60Hz
Rated Power	Max: 95W
Water Tank Capacity	5L
Working Time on A Full Tank	13~35h
Recommended Room Size	25m ² / 269ft ²
Noise	≤36dB
Dimensions	238 x 182 x 343mm / 9.4 x 7.2 x 13.5in
Net Weight	1840g / 169oz
Mist Output	Min: 100ml/h Max: 320ml/h

PRODUCT DIAGRAM



1. Top Cover

2. Mist Outlet

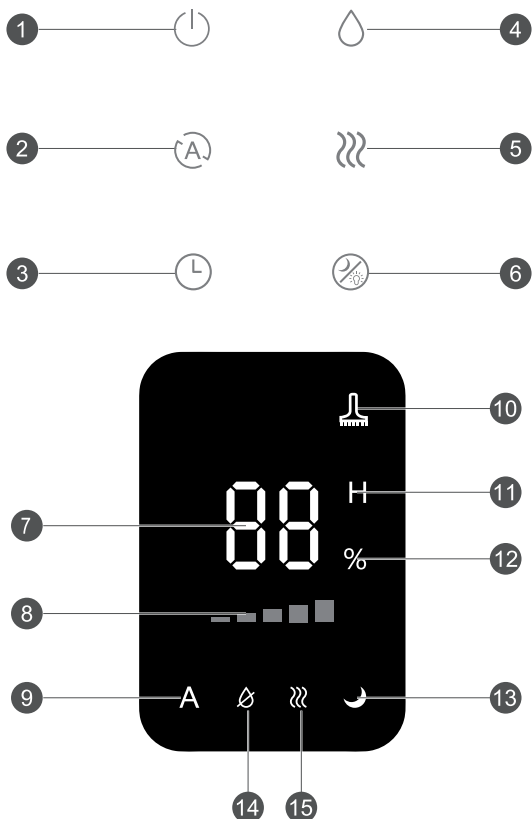
3. Water Tank

4. Operation Panel

5. Sink

6. Power Cord

OPERATION AREA



1. On/off Button

2. Constant Humidity Button

3. Timer Button

4. Mist Level Button

5. Warm Mist Mode Button

6. Light/sleep Mode Button

7. Humidity Level Icon

8. Mist Level Icon

9. Constant Humidity Icon

10. Clean Reminder Icon

11. Timer Icon

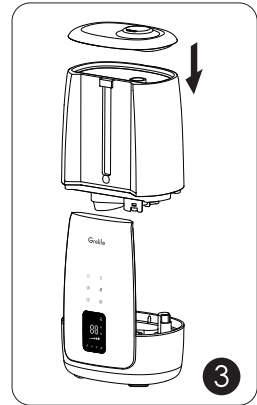
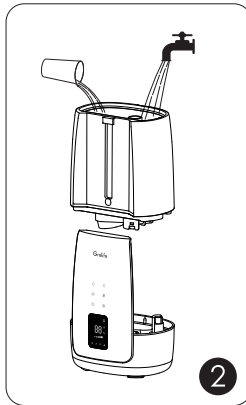
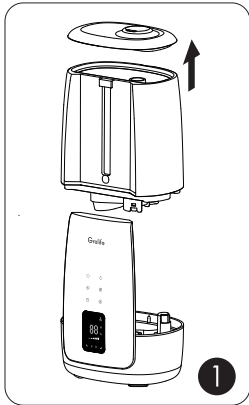
12. Humidity Unit Icon

13. Sleep Mode Icon

14. Water Shortage Icon

15. Warm Mist Mode Icon

OPERATIONS AND FUNCTIONS





Add water

1. Remove the tank cap.
2. Fill the tank with clean and cool water only.
3. Attach the tank cap and place the tank back onto the base.

Please make sure it fits together securely so that water can go from the tank to the reservoir.


Power On / Off and Mist Adjustment

Plug the power cord into a wall socket. Now the humidifier is ready for use.

1. Plug in the power, and then touch the On/Off  button, the device starts to work with Standard mist mode, the digital display will turn on.
2. In any working mode, touch this  button, will turn off the humidifier and digital panel.

The most comfortable environmental humidity is between 40%-60%. Please adjust the mist as needed.


Standard Mist Mode / Mist Level Adjust

Touch the  button, to enter the standard mist mode, you can adjust the mist amount by touching this button several times. Total 5 mist amount levels.

Mode	Levels	Mist Amount
Cold Mist	Level 1	70~120ML/H
	Level 2	120~170ML/H
	Level 3	170~200ML/H
	Level 4	200~250ML/H
	Level 5	>250ML/H
Warm Mist	Level 1	120~170ML/H
	Level 2	170~220ML/H
	Level 3	220~250ML/H
	Level 4	270~320ML/H
	Level 5	>320ML/H

Constant Humidity Mode

The most comfortable humidity is about 40%-60%, the constant humidity mode could adjust humidity and provide the most comfortable environment.

Touch the  button to enter the constant humidity mode and setting, the humidity icon is on and the number of humidity is blinking, the target humidity number can be increased/decreased by touching the humidity button again, the range of humidity mode is 30%-80%, touch the button or no more operations for within 5 seconds, fixed this setting.

In constant humidity mode, can't adjust the mist level by the button, and the mist mode works in maximum level by default.


When the set humidity is reached, the humidifier stops atomizing.


Warm Mist Mode

Touch the  button to enter the warm mist mode, the warm mist icon is on.

In this mode, the humidifier will quick humidify, and this temperature of the mist outlet is about 45°C.

Timer Mode


Touch the  button to set the timing shutdown, can increase/decrease the timing shutdown value by touching this button again. The setting range: 0~12 hours. If there is no more operations within 5 seconds, fixed this setting.

Touch the  button 1.5s, will log out the timer mode.

Light Control

Touch the  button to turn on or turn off the light.

Sleep Mode

Touch the  button 1.5 seconds to enter the sleep mode, only the sleep indicator lights up in this mode, operation sound and the light are off. A single touch of any icon will light up the corresponding status indicator, you can continue to make relevant settings, and the status indicator turns off after 5seconds.

CLEANING AND MAINTENANCE





Caution

1. DO NOT submerge the base in water.
2. Make sure water does not enter the base through the air outlet, air inlet, or the control knob.
3. DO NOT wash any part of this humidifier in the dishwasher which will damage the humidifier and void the warranty.

Daily Maintenance

After each use of the humidifier, pour out the remaining water and dry it before storage.

Weekly Maintenance

1. To properly clean your humidifier, we recommend you to remove scale and disinfect the humidifier separately.
2. DO NOT mix vinegar and bleach solutions together. Do not use more than 1 tsp. of bleach per gallon of water to avoid damaging your humidifier.
3. Please make sure the sealing ring on the tank cap is installed properly after cleaning to avoid water leakage.
4. Clean and maintenance the humidifier once it is used continuously for 3 days.
5. When the humidifier is not used for a long time, it is recommended to dry the device before storage.
6. Prepare a cotton swab/brush/mild detergent before cleaning.
7. Please turn off the humidifier and unplug it before cleaning.
8. Once the humidifier is used continuously for 3 days (humidifying mode), the cleaning reminder icon  will light automatically to remind the customer cleaning the humidifier. Long touch  button for 2 seconds, can cancel this remindier.

Cleaning The Water Tank

1. Remove the water tank and pour out the remaining water in the device.
2. Take out the filter and clean it separately with a brush or cotton swab.
3. Rinse the inside and bottom of the tank with water.
4. When there are water stains that are difficult to remove, can add an appropriate amount of mild detergent to soak for 30 minutes and then clean them.

Note: Do not use organic solvents, strong acids, strong alkalies and other substances for cleaning.

Cleaning The Sealing Ring

If there are the objects in the sealing ring of the water outlet of the water tank, it will cause the sealing to be loose and cause water leakage.

Please lift up the spring, and use a cotton swab to carefully remove the objects around the sealing ring at the water outlet.

Cleaning The Sink

Please clean the sink with a damp cloth or brush.

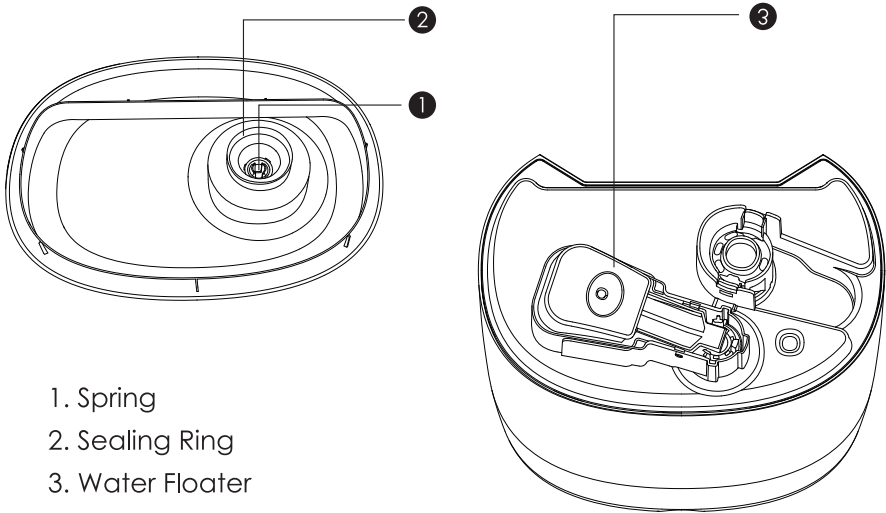
Notice:

It is not recommended to directly rinse the sink with water, to avoid water splashing into the base from the air outlet. If water drips into the base, it will directly affect the normal operation of the product.

When cleaning the sink, if you accidentally drop water into the air outlet, do not plug in the device, and place the device on the front. Then let the water drain through the base drain hole, and drain in the ventilated place for 3 days, until the water is fully evaporated before use.

TROUBLESHOOTING GUIDE

- 1. If the information listed in the troubleshooting guide can't solve your problem, please email us for help.
- 2. Failure to keep this unit clean from mineral deposits may affect operation of this unit.
- 3. Customer failure to follow these instructions may void the warranty.



- 1. Spring
- 2. Sealing Ring
- 3. Water Floater

Problem	Possible Cause	Solution
LED indicator is off	Unit not plugged in	Ensure unit is properly plugged in
	No power from power outlet	Try another power outlet
	Did not turn on the unit	Check the Control Knob is turned to the working position.
Water shortage icon lights up	No water in the water reservoir	Ensure the ① Spring is secured properly to the tank bottom allowing water to pass through to the base
	③ Water floater stuck	Adjust the ③ water floater to a horizontal position and make sure it can rise up with water

The LED Indicator is green but no mist or little mist is produced	Not enough water inside the tank	Refill and reinstall the water tank
	Mist level is set too low	Adjust to maximum mist
	Mineral buildup on the atomize	Feel if any air comes out from the nozzle. If yes, then clean water scale on the atomizer as instructed
	The base might be overfilled	Remove the tank, empty the base and place the filled tank on the empty base
Tank leakage	Tank may be damaged	Check for possible cracks in the tank. If there is a crack, please contact our customer service to solve it.
	Dust and impurities in the water tank	lean the water tank. Make sure there is no dust over the ❶ spring and ❷ sealing ring
	❶ Spring stuck	Ensure the ❶ spring is properly secured to the tank bottom allowing water to pass through to the base.
	❷ Sealing ring was not installed on tank cap	Install the ❷ sealing ring on the tank cap, please contact us if it is missing
Mist height is low, damping surrounding desk or floor. Condensation forms around humidifier or on windows and walls	Mist level is set too high for the room size	1. Check if the room is too humid and adjust to lower mist. 40%-60% works best 2. Open door and windows, or change to a larger room
	Air inlet is blocked	Humidifier should be placed on a hard flat surface, make sure no objects around the air inlet.
	Low indoor temperature leads to liquefaction	Raise the room temperature to 25°C / 77°F

Poor humidification	Mist level is set too low for the room size	1. Adjust to maximum mist 2. Close door or windows to reduce air ventilation, or change to a smaller room
	Air inlet is blocked	Humidifier should be placed on a hard flat surface, 2 feet above the floor, 12 inches away from the wall
	Low indoor temperature leads to liquefaction	Raise the room temperature to 25°C / 77°F
White dust appears or the black coating on the base flakes off	Tap water may contain too much minerals	Replace with filtered or distilled water
Strange Odor	Clean the unit	1. Clean the humidifier as instructed 2. Leave the empty and opened water tank in a cool place for 12 hours without the tank cap attached
Strange water noise	Water is going down to the water reservoir	This is normal while it is working
Humidifier is getting too hot	Unit works for too long	Power off and place in a well-ventilated place for 10 minutes

WARRANTY & CUSTOMER SUPPORT

For questions, support, or warranty claims, contact us at the address below that corresponds with your region. Please include your order number and product model number.

E-mail: support@grelife.net

* Please note, Grelife can only provide after sales service for products purchased directly from Grelife. If you have purchased from a different seller, please contact them directly for service or warranty issues.

Model: LE-H003

Grelife

WARM AND COOL MIST HUMIDIFIER

E-mail: support@grelife.net

FC UL998

MADE IN CHINA