

KONNEK STEIN

Quick Start Guide

Indoor Security Camera
QC21SE

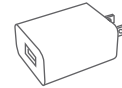
1.Product Introduction



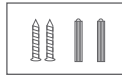
Camera



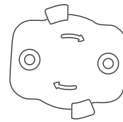
USB Power Cord



Power Adapter



Screw Accessories
Package



Mounting Brackets

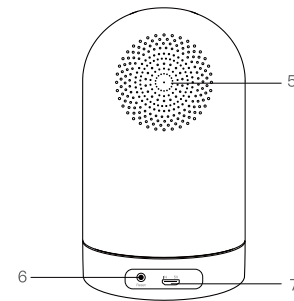
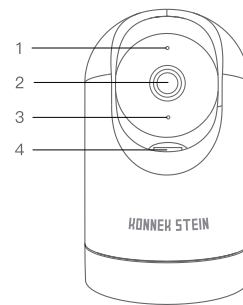


Manual

Package list: Smart Camera x1,Manual x1,USB Power Cord x1,Power Adapter x1,Screw Accessories Package x1

2.Camera Information

Tips: Please don't twist the camera forcibly.



1.Light Sensor

2.Lens

3.Microphone

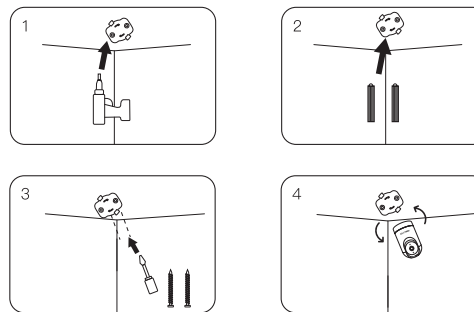
4.TF Card Slot

5.Speaker

6.Reset Botton

7.Power Interface

3.Product Installation



- 1.Place the fixing bracket on the wall before punching, mark it with a marker pen and then punch the hole.
- 2.Put the plastic anchors into the holes.
- 3.Secure the Mounting brackets to the wall with the screw handle and screws.
- 4.Then install the camera on the fixed bracket.

Tips: The camera only supports paperback and inverted.

4.Basic Parameters

Product Name: Indoor Security Camera

Product Model: QC21SE

Pixel: 2.0MP

Video Compression: H.264 High Profile

Image Enhancement: Digital Wide Dynamic 3D Noise

Reduction Local Storage: MicroTF card

Wireless Encryption: WEP/WPA/WPA2 Encryption

Power Input: 5V1A(Min)

Total Power Consumption: 5W (Max)

WirelessStandard: 2.4G 802.11 b/g/n

Support Platform: Android/iOS

Note:

- Reset Button: Long press “reset” hole 5sec, reset success.
- It is recommended to insert 8–64GB high–speed Micro TF card,otherwise it will not be able to store,view historical video and support Important functions such as firmware upgrading.
- Storage data adopt encrypted protection in order to protect user privacy. Even if TF cards are lost, they can eliminate the video disclosure. (The device’s TF storage data cannot be copied to the computer).

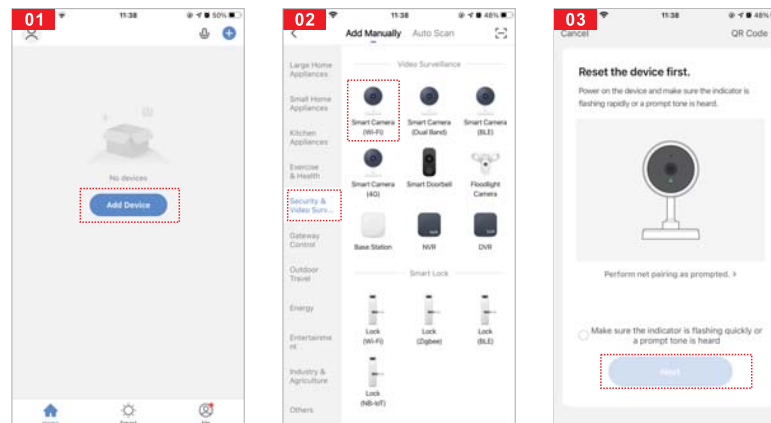
5.Install App

- 1.Scan the QR code below to download and install.
- 2.Search “Smart Life”in App Store or Google Play and download.

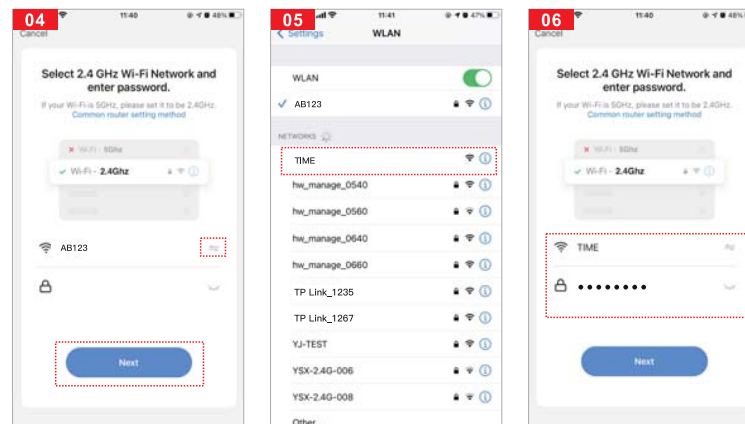


6.Add The Device–Scan QR code mode

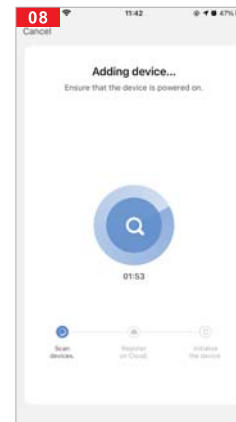
- Make sure Wi-Fi is available and connected to the Internet.
- Connect the camera to the power, then system startup completed.
- Open “Smart Life” APP, press the “+” in the upper right corner of the main screen (Figure 01); choose “Security & Sensor”、click “Smart Camera” (Figure 02) to add camera; and then click “Next step” (Figure 03).



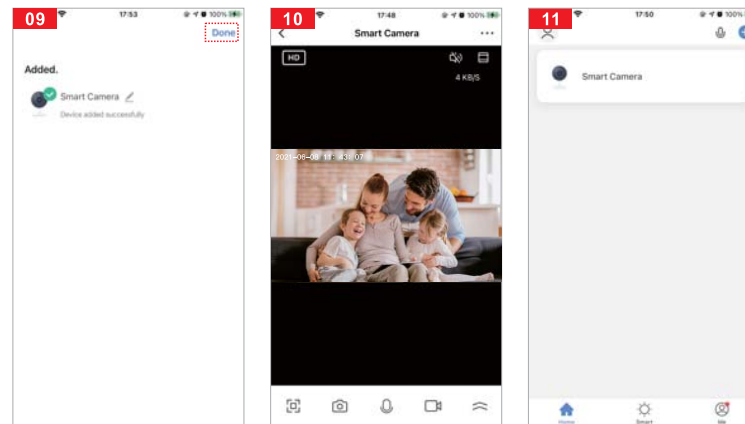
- Make sure Wi-Fi is available and connected to the Internet.
- It will jump to the WLAN interface and connects Wi-Fi (Figure 05). Please note that only 2.4 GH Wi-Fi network is supported.
- If the phone is connected to Wi-Fi (Figure 06).



- A QR code will prompt on your screen and you need to scan it with the Smart Camera, (the camera is about 20–30 cm away from the mobile phone lens). Then click “I Hear a Prompt ”when you hear the tone (Figure.07).
- “Connecting” (Figure 08).



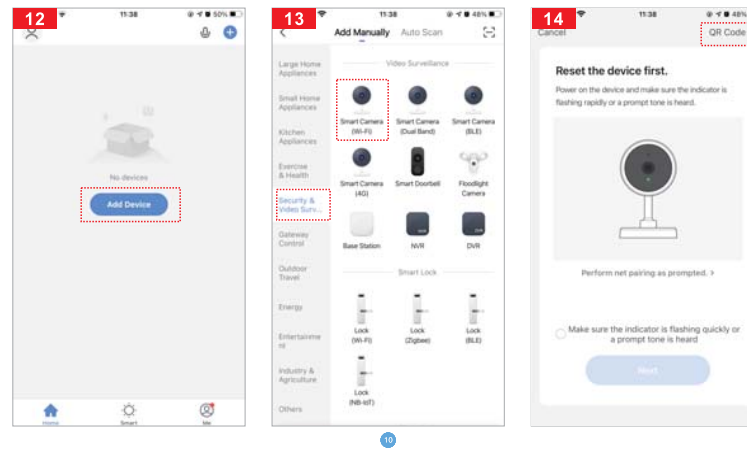
- Connection completed(Figure 09), and click “Done”.
- Then jump to preview interface (Figure 10).
- After closing the device preview interface, the interface returns to the APP home page. At this time, the connected device will appear on the APP home page (Figure 11). Then you can click directly to the device interface to see the monitoring situation without readding afterwards.



7.Add The Device–AP Mode

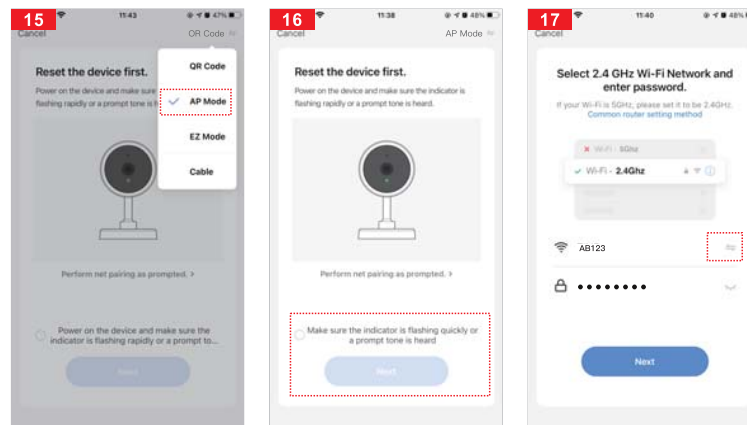
If you want to use AP Mode,press the reset button on the machine.

- Make sure Wi-Fi is available and connected to the Internet.
- Connect the camera to the power, system startup completed.
- Open“Smart Life” APP, press the“+” in the upper right corner of the main screen (Figure 12); choose “Security & Sensor”, click “Smart Camera” (Figure 13) to add camera ; Alternatively, choose “QR Code” to add (as shown in Figure 14).

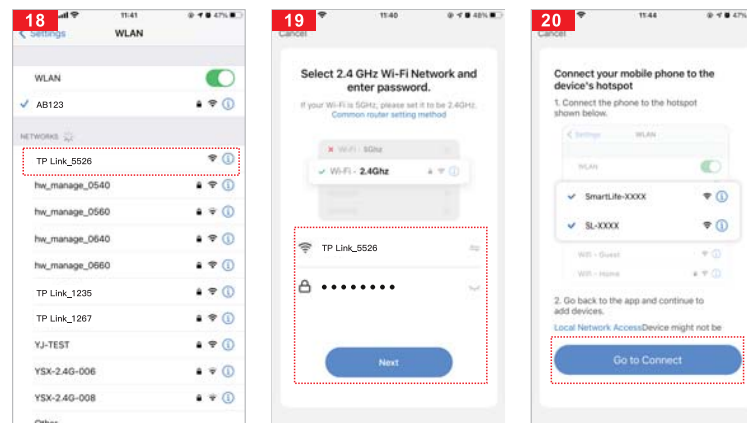


Note : Before using the “AP Mode”,you need to switch to “AP Mode” by lightly pressing the “Reset key” of the device.

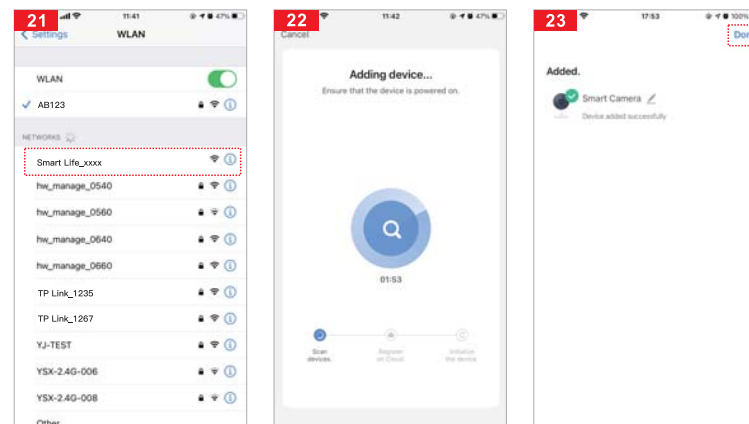
- Then click “AP Mode” (Figure 15.)
- Switch to “AP Mode”, click “Next” (Figure 16).
- Select the 2.4GHz Wi-Fi network and enter the password, click “ ” (Figure 17), if it is already a 2.4GHz network, click “Next”(skip to Figure 20).



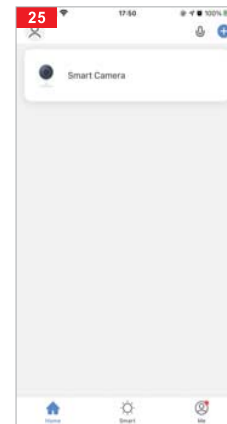
- Then select a 2.4GHz WiFi and enter the password to complete the connection (Figure 18).
- Click Back and return to the APP compatible mode interface, where the Wi-Fi name and the connected Wi-Fi name are displayed Password, click the “Next” button (Figure 19).
- The page jumps to where the interface prompts “Wi-fi” to connect to the device hotspot and clicks “Connect” (Figure 20).



- The interface jumps to the WALN connection interface, finds the Wi-Fi at the beginning of “Smart Life_xxxx”, and clicks on the connection (Figure 21).
- When the connection is completed, click back and return to the APP interface, at which time the APP display device is connected (Figure 22).
- At this time, the device has been successfully connected; the interface jumps to “Device added successfully” (Figure 23).



- Then click “connected”, it will jump to the Preview Interface of the Device (Figure 24).
- Close the device preview interface and the interface returns to the APP home page, at which point the connected device will appear on the APP home page(Figure. 25), After entering the device interface to view, no need to readd, click directly into the device interface to view.



8.APP Video Browsing Details



- 1.Preview mode
- 2.Sound
- 3. Long Screen
- 4.Time
- 5.Microphone
- 6. Screenshot Picture
- 7. Full Screen
- 8. Record Video
- 9.More

9.Matters Need Attention

- Try to keep away from the metal space.
- Avoid the furniture ,microwave oven blocked.
- Avoid the space where the audio, video and data lines are wound, and keep the space away from them as large as possible.
- Ensure that as close as possible to the coverage of wireless Wi-Fi signals. Switching network environment.
- In the new network environment, please press the reset hole about 5 seconds, then connect to the network.

10.The name and content of the harmful substances in the product

Part Name	Harmful Substance					
	Pb	Hg	Cd	Cr(VI)	PBB	PBDE
shell	<input type="radio"/>	<input type="radio"/>	<input type="radio"/>	<input type="radio"/>	<input type="radio"/>	<input type="radio"/>
Board	X	<input type="radio"/>	<input type="radio"/>	<input type="radio"/>	<input type="radio"/>	<input type="radio"/>
charger	<input type="radio"/>	<input type="radio"/>	<input type="radio"/>	<input type="radio"/>	<input type="radio"/>	<input type="radio"/>
annex	<input type="radio"/>	<input type="radio"/>	<input type="radio"/>	<input type="radio"/>	<input type="radio"/>	<input type="radio"/>
This form is based on the provisions of SJ/T 11364.						

This product conforms to RoHS environmental protection requirements. At present, there is no mature technology in the world to replace or reduce the lead content in the electronic ceramics, porcelain, optical glass, steel and copper alloy.

11.Other Information


FCC ID:2APD7-R9820

This device complies with Part 15 of the FCC Rules.

Operation is subject to the following two conditions:

(1) This device may not cause harmful interference.

(2) This device must accept any interference received, including interference that may cause undesired operation.

 **WARNING:** This product can expose you to chemicals including Pb, which are known to the State of California to cause cancer and birth defects or other reproductive harm.For more information go to www.P65Warnings.ca.gov.



Made in China

Customer Service Email:customerservice@ttinno.com

Any support you need, anything you feel like to share,

You are more than welcome to contact us.

