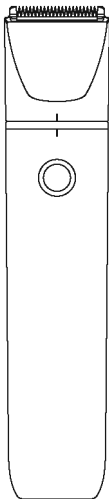


Pet Trimmer

User Manual



Read the manual carefully
before using this device

Package Contents



Pet Trimmer



Cutter head
for feet hair



Comb



User Manual



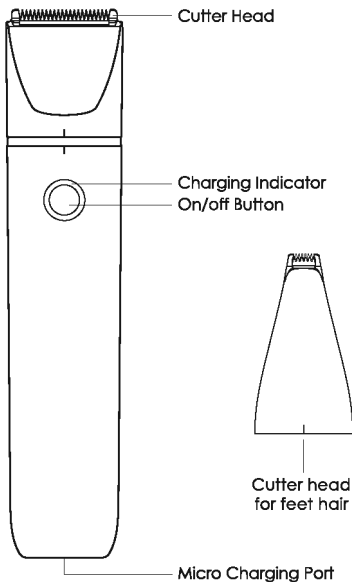
Micro Usb
Charging Cable



Lubricating Oil



Cleaning Brush



Cautions

Do not disassemble the product without authorization.

Do not plug or unplug the power supply with wet hands, it may cause leakage.

This product and its accessories are not toys. Please keep the accessories out of the reach of children to avoid danger.

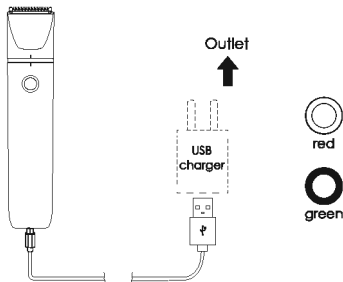
If not used for a long time, please charge the product every 3 months.

Fully charge the product for 1.5 hours before using it the first time. After 3 to 4 times of fully charge and discharge, the battery capacity will reach the best condition.

This product is only suitable for trimming pet hair, please do not use it for other purposes; do not trim the hair that is being dyed or damp to avoid pinching.

Charging method

1. Connect your device to the USB cable that comes with it.
2. Plug into one of these power sources: Wall power outlet, Computer, laptop, power bank, etc.
3. The indicator will flash RED light when charging.
4. When the indicator becomes solid GREEN, it means the product is fully charged.

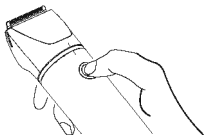


※Note:

- 1.If you use power adapter to charge, please make sure the adapter is not over 5V.
- 2.It's normal to generate some heat while charging and using the device.

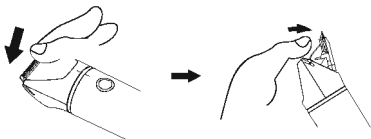
How to turn on/off the device

ON/OFF Button: short press to turn on, short press to turn off.

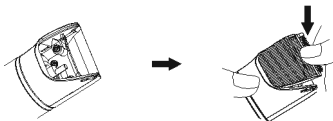


How to remove and attach the cutter head

1. Turn off the device, Use your thumb to press down the edge of blade to remove the cutter head.

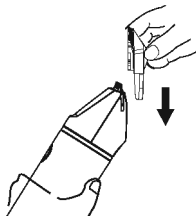


2. Turn off the device, Put the cutter head back. Press and then you will hear a clicking sound when done correctly.

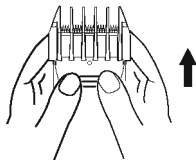


How to attach and remove the comb

Attach: Hold the device, buckle the comb from top to bottom, and install it in the right place when you hear a chuckle.



Remove: Hold the device and push out the comb from bottom to top.



※ **Note:** Using the guide comb can leave longer hair.
Using the guide comb or not, according to your needs.

How to change the two different cutter heads

Disassembly method

Rotate counterclockwise to disassemble the cutter head.

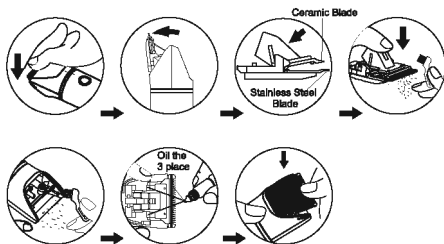
Installation method

Rotate clockwise to install the cutter head.



Blade cleaning and maintenance

1. Turn off the device and remove the blade, then use the brush to remove any remaining hair from the trimmer.
2. Oiling the blade before using and after cleaning to keep the blade in good condition and avoid rust.



Preparation Before Trimming



1.Cleaning and drying the dog.



2.Use a steel comb to comb the knotted hair.



3.Cut the knotted and longer hair.



4.Use the device for trimming

Question: Will this work on tangled pets' hair directly?

Answer: No. Please give your dog a bath, then dry off completely and brush dog hair. Ensure that there are no mats, tangles, or debris. Otherwise, dirty hair will hurt the blade and stuck the clippers.

Question: How loud is it? My dog gets scared easily.

Answer: The noise is less than 65dB. It is quieter than most of the others. You can turn clippers on and let the dog become familiar with the clippers before using it. Offer plenty of treats or praise if your dog is anxious or nervous. This is very helpful.

Question: Is the device waterproof?

Answer: Yes, the pet trimmer is IPX7. It can be washed under water.

Question: Will the blade become dull?

Answer: Frankly speaking, the blade is consumable indeed. Blade maintenance is very important. And you also can change a new blade when necessary.

Question: Why does it leave some lines after clipping?

Answer: Go slow. While trimming your pets' fur, don't push the clipper too fast, it will leave lines. This is a very important tip for you.

Warranty card

Product name	Purchase date	Warranty period
Pet Trimmer		1 year
Customer information		

Decive provide the following warranty

1. Production under the strict quality management and check.
2. Problems during the normal using, 1 year warranty is offered by presenting the warranty card.
(blade is consumable, paid to provide)
3. Some paid service are following:
 - a) problems caused by improper use;
 - b) problems caused by improper fix or modification;
 - c) problems caused by natural disaster;
 - d) problems or damages caused by hitting or dropping after purchase;
 - e) problems caused by power fault;
 - f) problems caused by not obeying the rules;
4. Please present the warranty card for maintenance.

Quality Moving the World

Made In China

**UK
CA**

FC

CE



装订方式	骑马钉	尺寸	70mm*100mm	颜色	单色
名称	EC21-中性说明书	材质	128g双铜，单色印刷+印哑油	版本日期	2022年04月11日