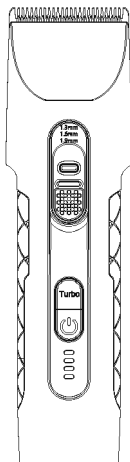


Pet Grooming Clipper



User Manual

Please read the manual carefully and keep it well for future reference

Package Contents



Electric Clippers



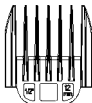
Guide Comb: 3MM



Guide Comb: 6MM



Guide Comb: 9MM



Guide Comb: 12MM



Cleaning Brush



Lubricating Oil

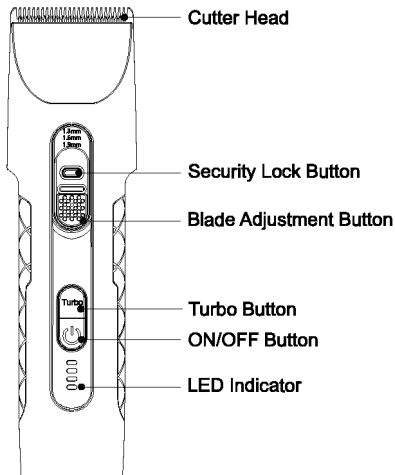


Type B charging Cable



User Manual

Product Diagram



01 Charging Method

To charge your device, follow these steps:

1. Connect your device to the USB cable that comes with it.

2. Plug into one of these three power sources:

Wall power outlet

Plug your USB charging cable into a USB power adapter, then plug the adapter into the wall.

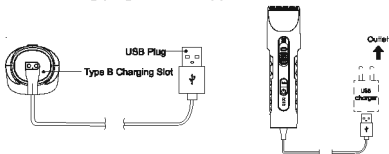
Computer

Plug your charging cable into a USB 2.0 or 3.0 port on a computer that's on and not in sleep mode. Don't use the USB ports on your keyboard.

Power accessory

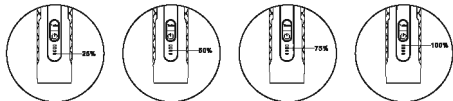
Plug your cable into a powered USB hub, docking station, or other Apple-certified accessory.

1. Put the connecting plug into the clipper slot.





2. Put the adapter into electrical outlet after confirming the clipper is switched off.

3. The indicator lights will light up one by one during charging. When all 4 indicators are on, it means that the product is fully charged.



02 How to turn on/off the clippers

ON/OFF Button: Short press  to turn on,
Short press  to shutdown



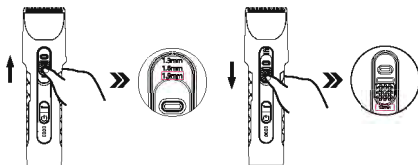
03 How to adjust the speed of electric clippers

Turbo Button: Press once **Tubro** for higher speed,
Press again **Tubro** for lower speed.



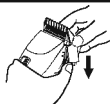
04 How to adjust the cutter head blade length

1. Push upward to decrease the cutter head blade length.
2. Press and hold the lock key button and then push downward to increase the cutter head blade length.



Note: The cutter head blade adjustment can help you get 4 different hair length: 1.0mm, 1.3mm, 1.6mm, 1.9mm.

05 How to attach and remove the limit comb



Attach: Hold the electric clipper, buckle the limit comb from top to bottom, and install it in the right place when you hear a chuckle.



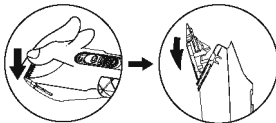
Remove: Hold the electric clippers and push out the limit comb from bottom to top.

Note: The guide combs are also to help get different hair lengths. Choose the long-size guide comb if you want to leave long hair. Choose the short-size guide comb if you want to leave short hair.

06 How to remove and attach the cutter head

● Remove the cutter head

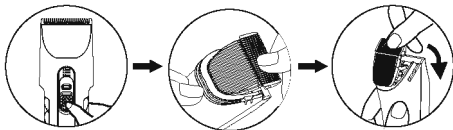
Use your thumb to press down the edge of blade to remove the blade.



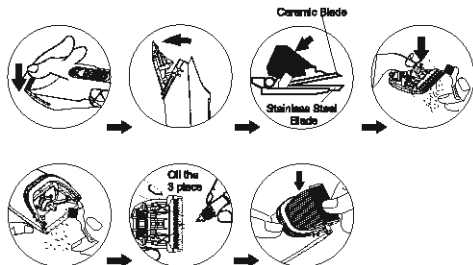
● Attach the cutter head

1. Press the lock key down and then push the adjustment button to the lowest position.

2. Replace the blade. You will hear a clicking sound when done correctly



07 Cutter And Maintenance

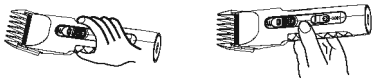


1. Before removing the blade, make sure you have switched off the clipper. Use your thumb to remove the blade as shown above.
2. Use the brush to remove any remaining hair between the upper blade and the lower blade. Please do not take apart the spring of the blade in case it breaks down.
3. Use the brush to remove any remaining hair from the clipper.
4. After cleaning the blade, add some lubricant between the upper blade and the lower blade. Otherwise, the blades edge may go dull, make weird noise, give out heat, and lower the performance.
5. Oiling the clipper blades 3 before every use and after cleaning can keep the clipper in a good working condition and avoid corrosion.
6. Replace the blade. You will hear a clicking sound when done correctly.

08 Before using the clipper

Familiarising yourself with the clipper

-Hold the clipper 4 in your hand to determine the most comfortable grip that will give you the best control for clipping.



CLIPPING TIPS FOR ALL BREEDS OF DOGS

Before clipping your dog for the first time, switch on the clipper for a short time near the animal so it gets used to the noise. If clipping for the first time, the clipping process will be slow. Try to move with the dog when clipping. After a few grooming sessions, you will develop your own comfortable style and grooming will get faster. Take your time and use lots of encouragement and affection. Dogs know when you are in a hurry and will get nervous, making grooming more difficult.

CLIPPING & TRIMMING DOGS

The first time you cut hair, cut only a small amount until you have become accustomed to how long each guide comb leaves the hair. Ensure that you regularly remove trimmed hair from the bladed, clean and oil the blades during clipping.



1.Cleaning and drying the dog.



2.Use a steel comb to comb the knotted hair.



3.Cut the knotted and longer hair.



4.Repair with electric clippers.

Questions And Answers

Q: Can you deal with messy hair?

A: It is recommended to cut the messy and longer and thicker hair of pets with scissors first and then use electric clippers to trim them.

Q: Will the blade become dull?

A: The cutter head needs to be cleaned regularly with dripping oil, which can lower down the bluntness of the cutter head and increase the service life of the blade.

Q: Is the electric clipper quiet enough?

A: The noise is less than or equal to 65DB.

Q: Is the clipper waterproof?

A: The cutter head part is waterproof and can be cleaned under water. But the body part is not waterproof. Please wipe with a damp towel or cloth instead of washing under water directly.

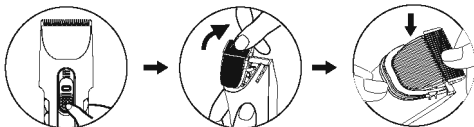
Q: Is the electric scissors head detachable?

A: Yes, the electric scissors head can be disassembled and installed. Follow the instruction manual to remove and install the cutter head correctly.

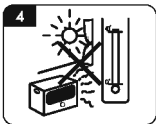
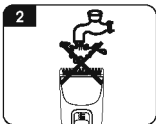
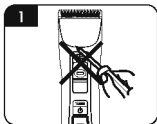
Troubleshooting

Q: Why can't the cutter head be installed back?

A: Please confirm that the adjustment button is at the position of 1.9mm, and the cutter head is installed as shown in picture. The installation will be failed if did not follow the steps correctly. Please follow the instructions on page 6 to install the cutter head back.



Cautions



1. Please do not disassemble the product without authorization.

2. Do not use any corrosives such as alcohol, gasoline etc. to clean the device.
3. Avoid charging it above 40°C and below 0°C.
4. The first charge should not be less than 3 hours. After 3 to 4 times of full charge and discharge, the battery capacity will reach the best condition.
5. It is normal that the product may slightly heat up during use and charging.

Warranty And Repair Information

Any defective happens when regular operation, the users could take the warranty card to enjoy a one-year free warranty at the shop where they purchased it. (Battery warranty period: 6 months, from the date of purchase: cutter heads and accessories are excluded)

Charges for the following conditions during the warranty period.

- a) Defective caused by improper use.
- b) Defective caused by improper repair and modification
- c) Defective caused by natural disasters
- d) Defective and damage caused by man-made collision or falling.
- e) Defective caused by failure to observe the precautions in this manual.

Please show the warranty card and purchase invoice when this product needs to be repaired.

product name	Pet electric clippers			warranty period		
model	EC01			1 year warranty from the date of purchase		
Purchase date	Year	month	day	Year	month	day

Not Included In The Warranty

Any second handed or resold products are not covered in warranty. Any defective products caused by artificial damage will not be replaced, and no refunds will be provided after 7 days from the date of purchase. For equipment purchased from authorized dealers, any replacement and refund within 7 days, please contact the dealer directly, if more than 7 days, please send it to us for repair. We are not responsible for repair and replacement costs caused by improper maintenance by users. If the equipment is changed or an unauthorized person damages the unit while attempting repair work, the warranty is invalid. We reserve the right to find any damaged parts or accessories during replacement and repair.



MADE IN CHINA