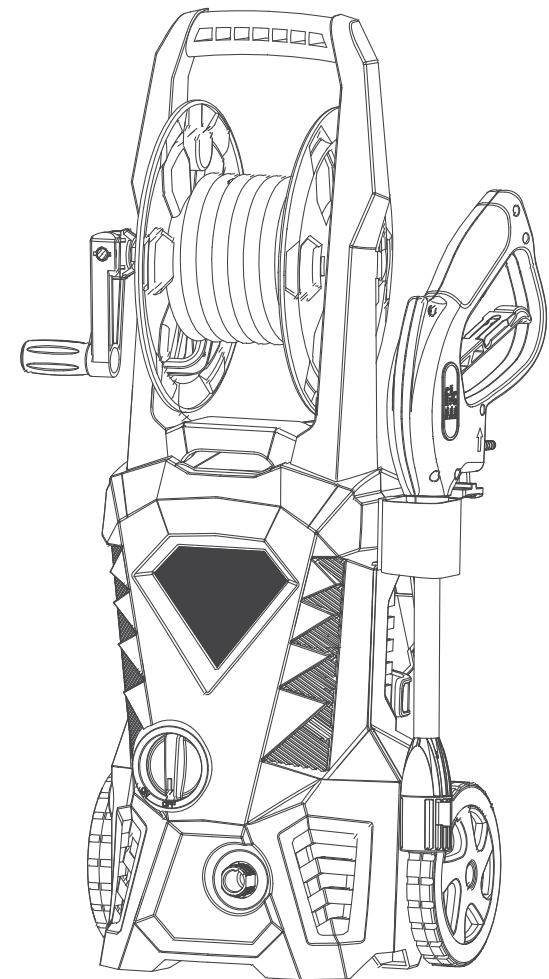




Scan the QR code to access the comprehensive installation video

OPERATOR' S MANUAL HIGH PRESSURE CLEANER



IMPORTANT!

Safety Instructions.

All Operators Must Read These Instructions Before Use !



CONTENTS

IMPORTANT SAFETY TIPS.....	03
GENERAL SAFETY PRECAUTIONS.....	04
ASSEMBLY INSTRUCTIONS.....	07
OPERATING INSTRUCTIONS.....	11
USING DETERGENTS.....	13
CLEAN-UP AND STORAGE.....	15
CLEANING TIPS.....	16
TECHNICAL DATA.....	17
TROUBLESHOOTING.....	18

AFTER-SALES GUIDE

we value our customers' shopping experience, and we encourage you to reach out to our customer service team if you have any questions or concerns while using our product. Please don't hesitate to contact us, and we'll be happy to assist you.

Contact the Seller

Find your order or the store name, then send us the relevant photos and videos. We will respond ASAP on Business day. If you have any problems with the pressure washer, please feel free to reach out to us.

Contact the brand

Email: service@electricpressurewasher.online

Your satisfaction is our top priority, and we are committed to providing the best customer service experience possible.

Thank you for your support and choosing our product.

TROUBLESHOOTING

- Disconnect the unit from the electrical power supply before carrying out maintenance on the machine or when checking that its parts are in proper working order.
- To avoid unnecessary hassles, consult the following table before contacting customer service with any mechanical issues.

Problems	Possible Cause&Possible Solution
Unit will not turn on.	Make sure the washing machine is in the "off" position. Plug the power cord into a grounded 120 volt outlet (extension cords should not be used). If the power cord does not plug into your outlet, your outlet is not properly grounded and should not be used. Use another power outlet. Press the reset button on the GFCI power box. If you don't see the light on in the GFCI's little window, unplug and plug it back in. Press reset, and if the light is on, turn the power switch on the power washer to "ON". Press the trigger on the gun and try again. If that doesn't fix the problem, try plugging into another power outlet and repeat the process.
The high pressure(HP) hose will not connect/stay connected to the spray gun. Is this a spray gun problem?	In most cases, the spray gun is not the problem. The problem is the rubber sleeve covering the fitting at the end of the high pressure hose. It has likely slipped up toward the metal tip. The fix:wiggle,twist and/or pull the rubber sleeve down until the entire tip is visible plus an 1/8" of the metal fitting below the tip. Now try to insert the hose tip into the spray gun. It should "click" into place and will not come out until the hose is released by pushing in the lever on the underside of the gun. You may cut away the end of the sleeve with a sharp knife if unable to move the sleeve down. Be careful not to cut or puncture the hose.
The unit is running but there is not water flow.	Check the water source. Unclog the nozzle on the lance. (See nozzle cleaning instructions under "Cleaning nozzles".) Or take off the lance and just spray out of the spray gun. This will indicate if the problem is with the lance.
Why is water leaking where the high pressure hose connects to the spray gun?	Make sure there is an o-ring at the end of the metal tip of the high pressure hose. If no o-ring is present, the connection between the hose and spray gun will leak.
I can't remove the lance from the spray gun. What should I do?	All lances and detergent tank are attached and removed from the spray gun in the same manner. Insert the quick-release end of the lance together (about a 1/8") and turn clockwise. The lance will lock in place. Remove the lance by reversing this procedure. Press the spray gun and lance together and turn counter clockwise. The lance will slide out. Or, hold the spray gun and lance in an upright position with the nozzle end on the floor. Push the whole assembly straight down to loosen the connection, and then follow the removal process again. You may also spray soapy water or a lubricant in the area where the lance connects to the spray gun.
The power washer turns on for 2 seconds, shuts off, and will not turn back on. Do I have a defective unit?	It sounds like your power washer is working just fine. When the water is connected, the accessories are assembled properly, and the power switch is turned on, the power washer may turn on for 1-2 seconds to prime the pump. It automatically shuts off and waits for the spray gun trigger to be pressed. When the trigger is pressed, water starts flowing through the pump. The water sensor in the pump "senses" the moving water and automatically turns the power washer on. Or, turn the power switch to off, hold in the trigger on the spray gun, so that you have a steady stream of water. While you are holding the trigger open on the spray gun, at the same time, turn the power switch on.

MADE IN CHINA

IMPORTANT SAFETY TIPS

- Never** point the high-pressure nozzle at people or animals.
- Never** drink alcohol or use drugs while operating the pressure cleaner.
- Never** operate the pressure cleaner while standing in water.
- Never** touch the electrical plug with wet hands.
- Never** let electrical connections rest in water.
- Never** operate pressure cleaner without the water turned on.
- Never** use hot water with this pressure cleaner.

IMPORTANT SAFETY PRECAUTIONS

WARNING: When using this product, basic precautions should always be followed, including the following:

1. Read all instructions before using the product. Save all safety instructions.
2. Do not operate the pressure cleaner when fatigued or under the influence of alcohol or drugs.
3. Risk of injection or injury – do not direct the high pressure water stream at any people or animals.
4. Do not allow children to operate the pressure cleaner at any time.
5. To reduce the risk of injury, close supervision is necessary when the pressure cleaner is used near children.
6. Know how to stop the unit and reduce pressure immediately. Be completely familiar with the controls.
7. Stay alert – always be aware of where you are directing the high pressure spray.
8. Keep cleaning area clear of all people.
9. Keep good footing and balance at all times – do not overreach or stand on an unstable support.
10. The work area should have adequate drainage to reduce the possibility of a fall due to slippery surfaces.
11. Follow the maintenance instructions specified in the manual.
12. To reduce the risk of electrocution, keep all connections dry and off the ground. Do not touch plug with wet hands.

TECHNICAL DATA

Main Voltage	AC 120V
Main Frequency	60Hz
Amps	13A
Max. pressure water supply	43.5PSI
Max. water temperature	40°C

Level of sound pressure measured

Sound power level:	93 dB (A)
Sound pressure level:	87±3dB (A)
Acceleration:	2.6±1.5 m/s ²

GUARANTEE

Refer to the enclosed guarantee conditions for the terms and conditions of guarantee.

ENVIRONMENT

Should your machine need replacement after extended use, do not put it in the domestic way.

13. The power washer is equipped with a Ground Fault Circuit Interrupter (GFCI) Built Into The Power Cord Plug which greatly reduces the chance of electric shock while the unit is in use. If Replacement Of The Plug Or Cord Is Needed, Use Only Identical Replacement Parts.
14. This power washer conforms to CSA and other safety and consumer standards. Do not modify or rebuild any part of your power washer.
15. Never use an extension power cord since it defeats the effectiveness of the GFCI and increases the chance of electrocuting the operator.

GENERAL SAFETY PRECAUTIONS

1. Intended for outdoor household use only.
2. High-pressure hose can develop leaks from wear, abuse, kinking etc. Do not use a damaged hose.
3. Do not use the pressure cleaner in areas near combustible materials, combustible fumes, or dust.
4. Some chemicals or detergents may be harmful if inhaled or ingested causing severe injury. Use a respirator or mask whenever there is a chance that vapors may be inhaled. Read all instructions included with the mask so you are certain the mask will provide the necessary protection against inhaling harmful vapors.
5. Before starting the pressure cleaner in cold weather, check all of the parts of the equipment and be sure that ice has not formed. Do not store the unit anywhere that the temperature will fall below 0°C(32°F).
6. DO NOT MAKE ANY MODIFICATIONS TO ANY OF THE COMPONENTS! Units with broken or missing parts, or without the protective housing or covers should NEVER be operated.
7. Keep the high-pressure hose connected to the pressure cleaner and the spray gun while the system is pressurized. Disconnecting the hose while the unit is pressurized is dangerous, and may cause injury.
8. Do not leave the pressure cleaner unattended while the power switch is ON.
9. Keep water spray away from electrical wiring or fatal electric shock may result.

CLEANING TIPS

WARNING: ALWAYS TEST THE SPRAY IN AN AREA FREE AND CLEAR OF PEOPLE AND OBJECTS BEFORE YOU SPRAY AT THE INTENDED CLEANING SURFACE.

Wood and Vinyl Decks

Rinse deck and surrounding area with fresh water. If using detergent, fill the detergent reservoir and apply to the area being cleaned at low pressure. For optimal results, reduce your work area to smaller sections and clean each section one at a time. Allow the detergent to rest on the surface for a few minutes and then rinse at high pressure. DO NOT LET THE CLEANSER DRY. Always clean from left to right and top to bottom for best results. Rinse at high pressure using the fan spray keeping the tip of the spray nozzle at least 6-9 inches from the cleaning surface. Maintain a further distance from the cleaning area when using a direct spray. Caution: For softer woods, increase the distance from the cleaning area.

Cement Patios, Stone, and Brick

Rinse cleaning and surrounding area with fresh water. If using detergent, fill the detergent reservoir and apply to the area being cleaned at low pressure. Rinse at high pressure using the fan spray in a sweeping motion keeping the tip of the spray nozzle at least 3-6 inches from the cleaning surface. Maintain a further distance from the cleaning area when using a direct spray.

Cars, Boats, and Motorcycles

Rinse cleaning and surrounding area with fresh water. If using detergent, fill the detergent reservoir and apply to the area being cleaned at low pressure. To achieve the best results, clean one side at a time. Allow the detergent to rest on the surface for a few minutes, but do not let the detergent dry. Rinse at high pressure using the fan spray in a sweeping motion keeping the tip of the spray nozzle at least 8 inches from the cleaning surface. Maintain a further distance from the cleaning area when using a direct spray. Wipe surface dry for a polished finish.

Barbecue Grills, Power Equipment, and Garden Tools

Rinse cleaning and surrounding area with fresh water. If using detergent, fill the detergent reservoir and apply to the area being cleaned at low pressure. Allow the detergent to rest on the surface for a few minutes, but do not let the detergent dry. Rinse at high pressure using the fan spray keeping the tip of the spray nozzle at least 1-3 inches from the cleaning surface. Maintain a further distance from the cleaning area when using a direct spray.

Safety Symbols

The following table depicts and describes safety symbols that may appear on this product. Read, understand, and follow all instructions on the machine before attempting to assemble and operate.



Indicates a potential personal injury hazard.



To reduce the risk of injury, user must read and understand operator's manual before using this product.



Double-insulated construction.



Always wear safety goggles or safety glasses with side shields and, as necessary, a full face shield when operating this product.



Do not expose to rain or use in damp locations.



To reduce the risk of injection or injury, never direct a water stream towards people or pets or place any body part in the stream. Leaking hoses and fittings are also capable of causing injection injury. Do not hold hoses or fittings.



Failure to use in dry conditions and to observe safe practices can result in electric shock.



To reduce the risk of injury from kickback, hold the spray lance securely with both hands when the machine is on.

Machine not intended to be connected to the potable water mains.

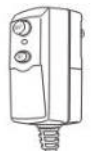
Warning! Never point the gun to human, animals, the machine body, power supply or any electric appliances.

Waste electrical products should not be disposed of with household waste, please recycle where facilities exist. Check with your local authority or retailer recycling advice.

“SAVE THESE INSTRUCTIONS”

GROUND FAULT CIRCUIT INTERRUPTER PROTECTION

This pressure washer is provided with a ground-fault circuit-interrupter (GFCI) built into the plug of the power-supply cord. This device provides additional protection from the risk of electric shock. Should replacement of the plug or cord become necessary, use only identical replacement parts that include GFCI protection.



SERVICING OF A DOUBLE-INSULATED APPLIANCE

In a double-insulated product, two systems of insulation are provided instead of grounding. Grounding means are not provided for a double-insulated product, nor should grounding means be added to the product. Servicing a double-insulated product requires extreme care and knowledge of the system, and should only be done by qualified service personnel. Replacement parts for a double-insulated product must be identical to the original parts. A double-insulated product is marked with the words "Double Insulation" or "Double Insulated". Product may also be marked with symbol shown below.



WARNING To reduce the risk of electrocution, keep all connections dry and off the ground. Do not touch the plug with wet hands.

- Do not use the appliance if a supply cord or important parts of the appliance are damaged, e.g. safety devices, high pressure hoses, trigger gun.
- If an extension cord is used, the plug and socket must be of watertight construction.
- WARNING: Inadequate extension cords can be dangerous.
- Remove the plug from the socket-outlet during cleaning or maintenance and when replacing parts or converting the machine to another function.

PROPER USE OF THE PRESSURE CLEANER

THIS UNIT IS INTENDED FOR USE WITH COLD WATER ONLY! DO NOT USE HOT WATER IN THIS PRESSURE CLEANER.

1. Operate the pressure cleaner at no more than the fluid pressure rated for the pressure cleaner. Never run the pressure cleaner without a water supply. Running the unit without a water supply will cause irreparable damage to the unit.
2. Make sure that the water supply you use for the pressure cleaner is not dirty, sandy, and does not hold any corrosive chemical products. Using a dirty water supply will compromise the long life of the pressure cleaner.
3. CAUTION - The pressure cleaner can be used for a variety of applications including washing cars, boats, patios, decks, garages etc. where high pressure is necessary to remove dirt and debris. High-pressure water flow can damage the work surface if not used properly! See the section titled "Operating Instructions" for more details. Always test the spray in an open area first.
4. NEVER move the unit by pulling on the high pressure hose. Use the handle provided on the top of the unit.
5. Always hold the high pressure gun and wand with two hands. Keep one hand on the gun/trigger, while supporting the wand with the other hand (see diagram).
6. When dispensing detergent, the pressure cleaner applies detergent to the cleaning area at low pressure only. Once the detergent has been applied, spray the detergent off of the work area by using the adjustable nozzle.

CLEAN-UP AND STORAGE

Shutting Down the Pressure Cleaner

WHEN FINISHED USING THE PRESSURE CLEANER, FOLLOW THESE STEPS TO SHUT DOWN THE UNIT:

- Turn the pressure cleaner to the OFF position.
- Turn off the water supply.
- Before disconnecting high-pressure hose connection, point the gun in a safe direction and discharge the high-pressure water.
- Disconnect high-pressure hose from the pressure cleaner and gun.
- Disconnect garden hose from the pressure cleaner.
- Remove quick coupler fitting from garden hose and attach to the nipple portion of the fitting installed on the pressure cleaner for storage.
- Remove excess water from the pump by tipping the unit on both sides to drain any remaining water from inlet and outlet fittings.
- Remove Water Intake Filter and flush with water to remove dirt or debris. Return filter once cleaned.
- Drain detergent reservoir and flush with running water.
- Wipe away any remaining water on all parts and fittings.
- Engage the gun safety lock.
- Store the pressure cleaner, parts, and accessories indoor in an area with a temperature above 0°C (32° F).

Winterizing and Long-Term Storage

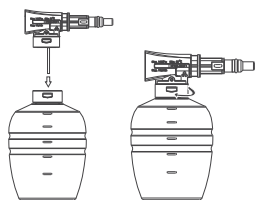
FOLLOW ALL OF THE ABOVE SHUT-DOWN PROCEDURES, ADDING THE FOLLOWING STEPS...

- After disconnecting the water supply, and before disconnecting the high-pressure hose, turn the pressure cleaner on for 2-3 seconds, until any remaining water in the pump exits.
- TURN UNIT OFF IMMEDIATELY.
CONTINUED USE OF THE PRESSURE CLEANER WITHOUT WATER SUPPLY ATTACHED WILL CAUSE SEVERE DAMAGE TO THE UNIT!
- Always store the pressure cleaner, parts, and accessories indoor in an area with a temperature above 0° C (32° F).

WARNING: FAILURE TO COMPLY WITH THESE STORAGE INSTRUCTIONS WILL RESULT IN DAMAGE TO THE PUMP ASSEMBLY.

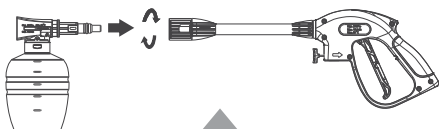
Maintenance

- This pressure cleaner is supplied with a closed lubrication system, so no addition of oil is needed.
- Check all hoses and accessories for damage prior to use.
- Check the inlet filter periodically for deposits. Clean this filter regularly for maximum performance.



Step 2

Fill the detergent container with approved detergent. Pour the detergent slowly into the reservoir using a funnel. Re-attach the two components by re-inserting the nozzle back onto the detergent reservoir and turning clockwise.



Step 3

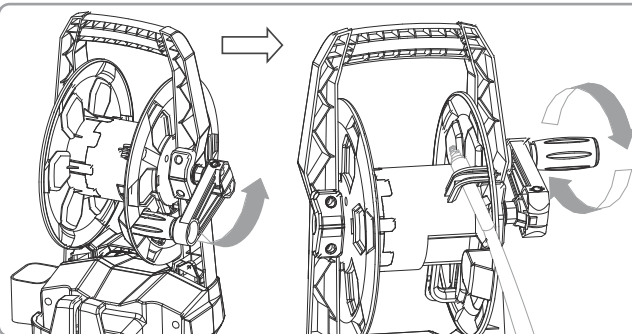
To apply the detergent cleanser to your working area, attach the detergent nozzle to the gun. Turn the pressure cleaner switch to the ON position. Pull the trigger to operate the unit. The

pressure cleaner will mix the detergent with water. Do not allow the detergent to dry on the object you are cleaning. (Remove the soap bottle in the same way you would remove a lance)

WARNING: NEVER USE PRODUCTS WITH BLEACH OR CHLORINE OR ANY OTHER CORROSIVE MATERIALS, INCLUDING LIQUIDS CONTAINING SOLVENTS (I.E. GAS, OILS ETC), TRI-SODIUM PHOSPHATE PRODUCTS, AMMONIA, OR ACID-BASED CLEANERS. THESE CHEMICALS WILL HARM THE UNIT AND CAUSE DAMAGE TO THE SURFACE BEING CLEANED. ALWAYS READ THE LABEL.

(I.E. GAS, OILS ETC), TRI-SODIUM PHOSPHATE PRODUCTS, AMMONIA, OR ACID-BASED CLEANERS. THESE CHEMICALS WILL HARM THE UNIT AND CAUSE DAMAGE TO THE SURFACE BEING CLEANED. ALWAYS READ THE LABEL.

USE THE HOSE REEL



When not in use, insert the quick-connect end of the high pressure hose into the hook of the reel, turn the hose reel handle counterclockwise, and reel the hose onto the reel.

ASSEMBLY INSTRUCTIONS

Unpacking The Carton

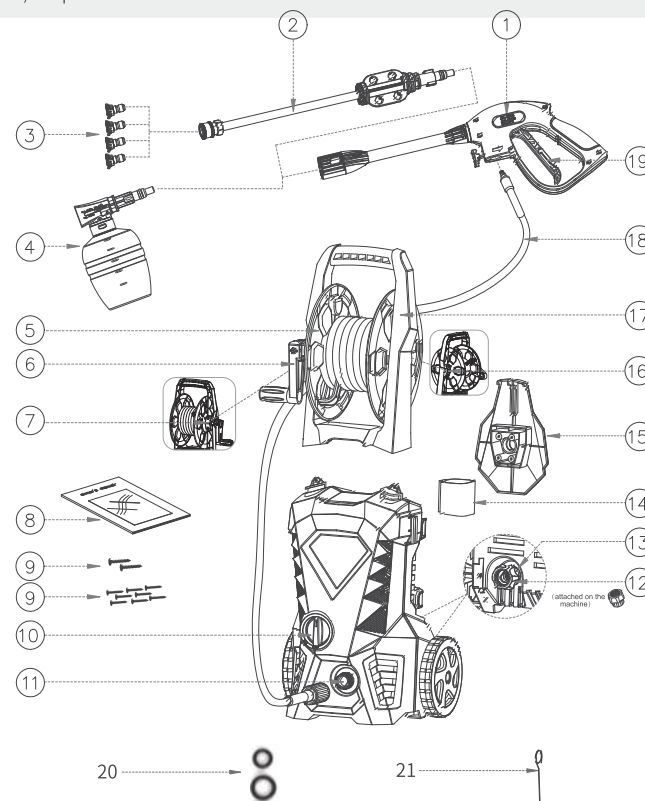
After opening the carton, please remove all parts and check them against the following list of components that are included:

1. Gun	2. Quick lance	3. Metal nozzles (0°/15°/25°/40°)
4. Detergent Bottle	5. Reel handle shaft	6. Reel handle bracket shaft
7. Handle bracket shaft(L)	8. Manual	9. Screws package 4*16(8pcs)+4*22(2pcs)
10. ON/OFF switch	11. Water outlet	12. Water inlet connector
13. Water inlet	14. Gun holder	15. Power cord holder
16. Handle bracket shaft(R)	17. Handle	18. High pressure hose
19. Lock-off switch	20. O-rings	21. Cleaning pin

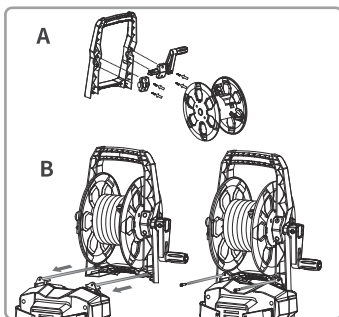
Note:(No:20) Do not lose this accessory at will, it can be used as an after-sales part!!!!!!

O-ring(5.6*1.8) is used to connect the high pressure tube to the gun section

O-ring(9*2.65) for quick lance

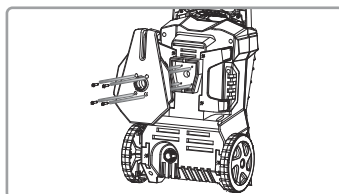


Due to transportation and packaging, some of the accessories may be supplied disassembled. Please follow the assembly instructions.



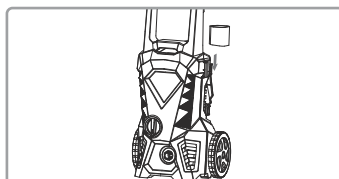
Step 1

A Fix the handle bracket shaft and reel handle shaft fixed mount on the two sides of the reel, then infix the reel handle bracket shaft into the handle bracket shaft fixed mount on the right of the machine. Put the reel on the long handle and fix four screws (4 screws, 4*16).
B Slide the reel long handle to the machine, and fix two screws (2 screws, 4*22mm).



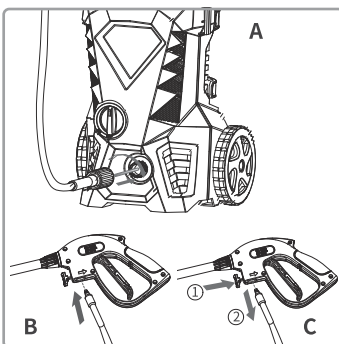
Step 2

Mounting the power cord holder
 Screw the power cord holder tight to the main unit (4 screws, 4*16).
 Note: All screws will be packed together with the manual, pls kindly check and find it when unpacked.



Step 3

Install gun holder to the main unit.



Step 4

A Screw the high pressure hose onto the water outlet pipe. Push and turn (clockwise) it tight to avoid leakage. When the pieces are joined properly, you cannot separate the two components by pulling straight out from the water outlet.

CAUTION: Prior to operating the machine, please ensure that the high pressure hose has been completely uncoiled.

B Attach the other high pressure hose to the gun.

Note: After the high pressure hose is connected, check the connection by gently pulling on the hose to ensure it stays connected.

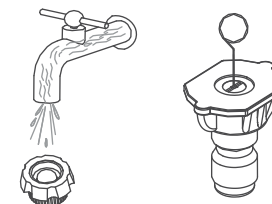
C Push the lock button and pull to detach the high pressure hose. For detaching the hose easily, please pull the trigger to drain water from wand when operation is completed and switch is in "OFF/0" position.

WATER FILTER AND NOZZLE CLEANING INSTRUCTIONS

clogged or partially clogged water filter or nozzle can cause significant reduction of water pressure coming out of the nozzle and/or cause the unit to pulsate while spraying.

1. The water filter was installed inside the water inlet quick connector, should be cleaned periodically. Rinse it with clean tap water, and then place it back into the water inlet quick connector.

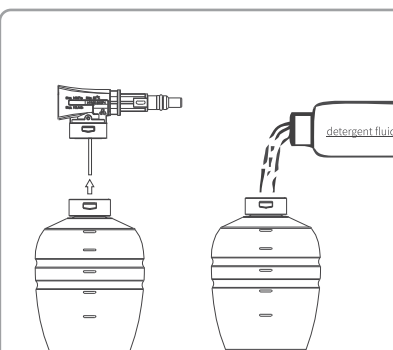
2. Using the nozzle tip cleaner provided (or an unfold paper clip), insert the wire into the nozzle hole and move back and forth until debris is dislodged. Back flush water through the nozzles using garden hose and highest pressure available (either standard water nozzle or use your thumb over the nozzle to create water pressure for back flush).



USING DETERGENTS

THE PRESSURE CLEANER WILL DISPENSE DETERGENT AT LOW PRESSURE. USE THE ADJUSTABLE SPRAY NOZZLE TO RINSE CLEAN.

BIODEGRADABLE DETERGENTS ARE SPECIFICALLY FORMULATED TO PROTECT THE ENVIRONMENT AND YOUR PRESSURE CLEANER. THESE DETERGENTS WILL NOT CLOG THE FILTER AND WILL PROTECT THE INTERNAL PARTS OF THE PRESSURE CLEANER FOR A LONGER LIFE.

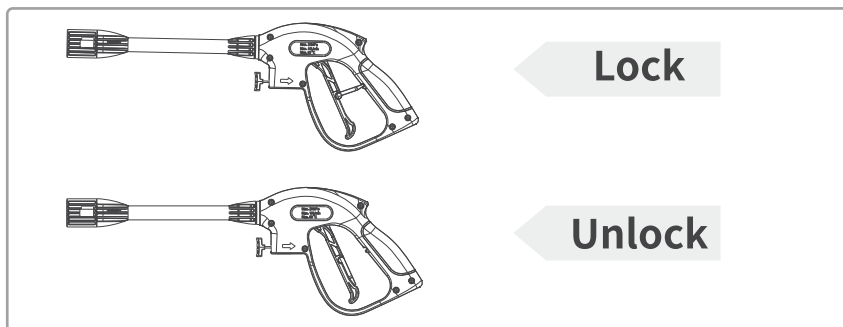


Step 1

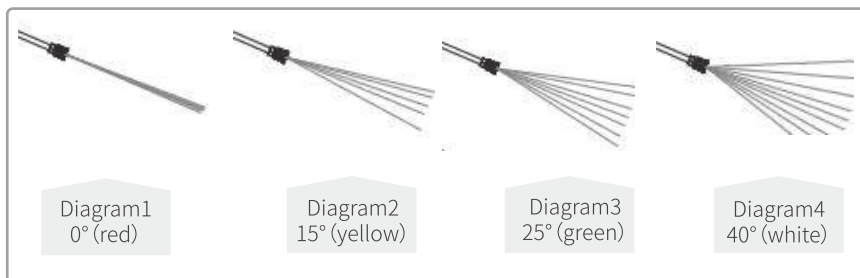
Separate the nozzle from the detergent container by turning the detergent reservoir counter clockwise and separating the two components.

Gun Safety Lock

This pressure cleaner is equipped with a gun trigger safety lock. When not using the pressure cleaner, use the safety lock to keep from accidentally engaging the high pressure spray.



Adjustable Spray Nozzle



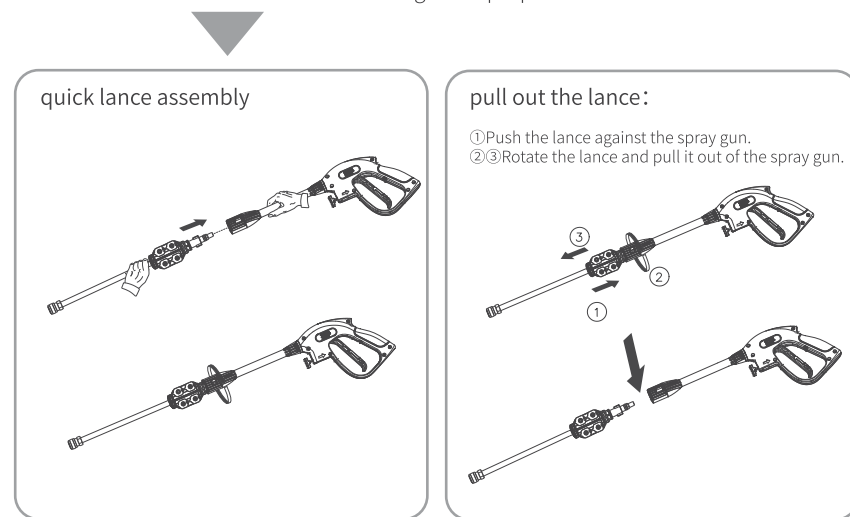
0° nozzle-red : This type of nozzle produces a vertical, stratified, high-pressure jet for surface cleaning with particularly severe dirt.

15° nozzle-yellow, 25° nozzle-green, 40° nozzle -white: These types of nozzles can produce the corresponding angle fan-shaped high-pressure jet, cleaning power, for large-scale dirt surface cleaning.

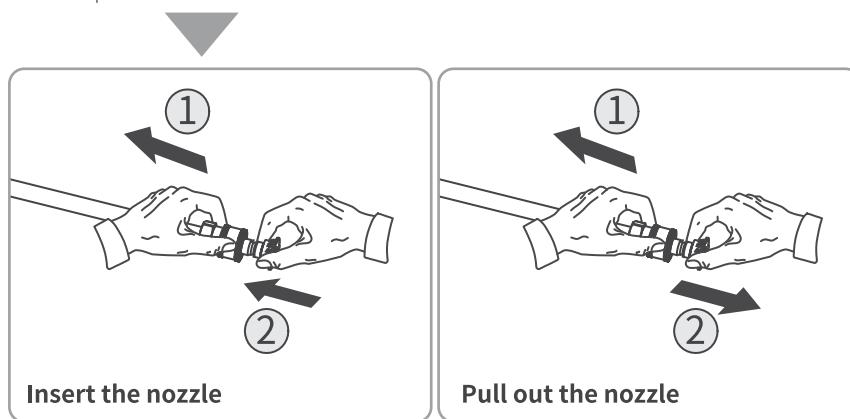
- Warning: High pressure jets can be dangerous if subject to misuse. The jet must not be directed at persons, live electrical equipment or the appliance itself.
- Do not direct the jet against yourself or others in order to clean clothes or foot-wear.

Step 5

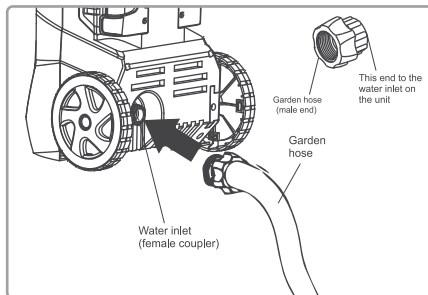
A Insert the quick lance into the gun. Push and turn the adjustable nozzle clockwise onto the gun until hand tight to lock it in place. When the pieces are joined properly, you cannot separate the two components by pulling straight out on the adjustable nozzle. All attachments must be inserted into the gun for proper use.



B Grasp the top metal ring with your left hand and pull it downwards without releasing it. Insert the nozzle directly into the wand. Release the metal ring with your left hand to lock it in place.

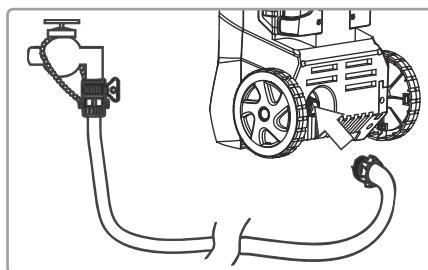


Grasp the top metal ring of the wand with your left hand, squeeze it down, and without releasing the ring, continue pulling the nozzle out of the wand with force.



Step 6

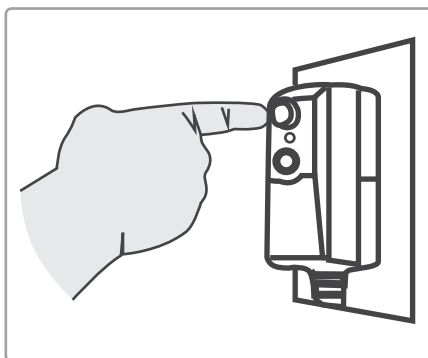
Connect the garden hose adaptor (female coupler) to the water inlet of the pressure washer, then thread your garden hose (male end) into the garden hose adaptor. The garden hose must have an internal diameter of at least 13 mm (1/2 in.) and must be reinforced. The water supply must be at least equal to the washer delivery capacity.



Step 7

Attach the hose connector to pressure washer. Before attaching the connector to the male fitting, remove the plastic cap, which is inserted onto the male fitting on the pressure washer before shipping. This plastic cap can be discarded once removed. After both components have been installed, attach the garden hose with connector screw

on the pressure washer. Connect the garden hose to the waterspout. Finally, connect the hose connector to the faucet.



Step 8

Connect to the power supplier

- (1) Plug the pressure washer into the power outlet.
- (2) Press TEST button, power will be cut and indicator will fade. Do not use if this test fails. We recommend you to press the test button every time before using pressure washer to ensure the protector works.

(3) Press the RESET button the indicator will illuminate, power on for use.

OPERATING INSTRUCTIONS

THIS UNIT IS INTENDED TO BE USED WITH COLD WATER ONLY! DO NOT USE HOT WATER IN THIS PRESSURE CLEANER!

Starting Up

After connecting the pressure cleaner to your cold water supply, proceed as follows:

- Make sure that the on/off switch is in the off position.
- Attach the hose to the gun as per assembly instruction step #4.
- Connect the high pressure hose to the high pressure outlet fitting as per assembly step #4.
- Connect the garden hose to the high pressure washer inlet fitting as per assembly step #6.
- Open the water supply valve completely.
- Before turning the unit on, press the gun trigger to bleed all the remaining air out of the pump and hose.
- Insert the adjustable spray nozzle into the gun as per assembly step #5.
- Start the pressure cleaner by turning the on/off switch to the on position and squeeze the trigger. REMINDER: Motor does not run continuously, only when the trigger is squeezed.
- Note: Leakage switch operation: light on means power on, no light means no power.

WARNING – RISK OF INJECTION! Unit will start spraying when trigger is squeezed. When turning the unit off after use, high pressure still exists inside the hose and unit. Point the gun in a safe direction and discharge the excess pressure. NEVER direct the high pressure water stream at people or animals.

Automatic On/Off

The pressure cleaner is equipped with an automatic on/off switch. The pressure cleaner will only run when the power switch is in the ON position and the trigger on the gun is squeezed. When you release the trigger to stop spraying water through the gun, the motor on the pressure cleaner will automatically shut off. Simply squeeze the trigger again to resume using the cleaner. To stop using the pressure cleaner, release the trigger and switch the unit to the OFF position. The unit should be turned completely OFF while not in use or while unattended.

Bleeding the Gun

It is very important to bleed the gun before using the pressure cleaner. Refer to the “Assembly Instructions” to assemble the pressure cleaner. To bleed the gun, simply connect the garden hose to the pressure cleaner and squeeze the trigger BEFORE turning the electrical supply on. This allows any air trapped inside the pressure cleaner and gun to be removed before using the unit. Continue holding trigger for approximately one minute to allow any excess air out of the unit. Water will flow through the gun at low pressure during this procedure. For more bleeding tips, see the section titled “Operating Instructions.”