

Wireless-N WiFi Extender

User Manual



DW DARTWOOD

In the Box

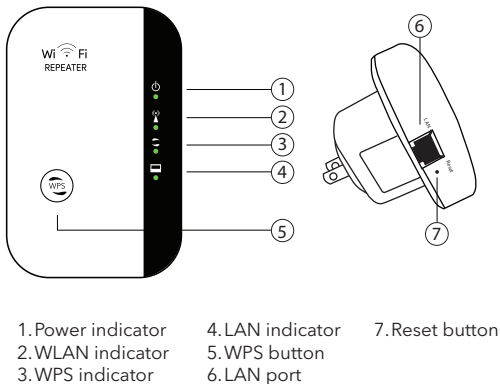


1 x WiFi extender



1 x LAN cable (RJ45)

Introduction to Parts



Preparation

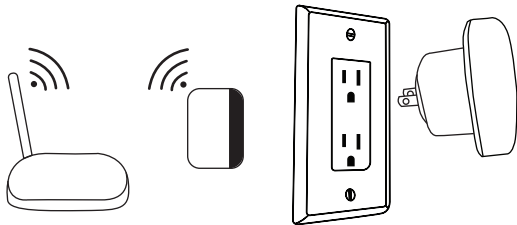
- Prepare the current wireless network password for setup.
- Make sure your current router works properly and supports a 2.4 GHz network.
- You will need a WiFi-supported device to set up the extender, such as a smartphone or laptop.

Installation

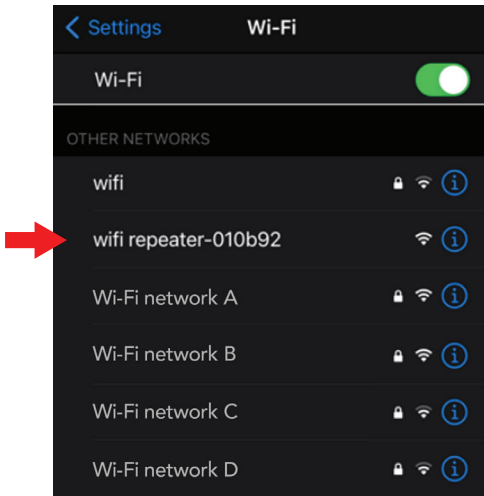
Note:

This device is intended to extend your wireless network coverage. It does not help to improve the speed. The network speed is limited by the original network and depends on different factors, such as signal strength, distance, obstacles, etc.

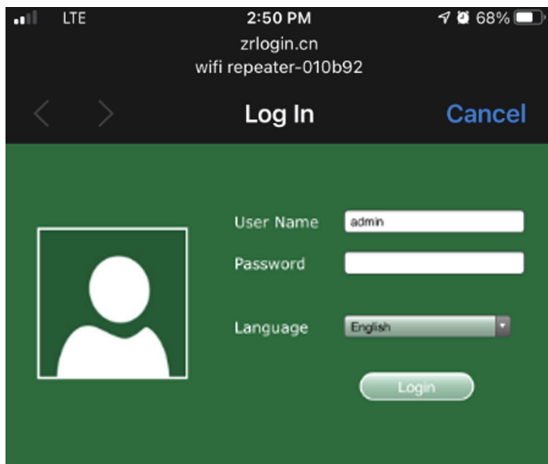
1. To set up, plug in your WiFi extender close to your wireless router. Wait for the power indicator to turn solid green.



2. Search the WiFi network on your device named "wifi repeater-xxxxxx", then connect to the extender network. If you can't find the extender, reset the extender by using a pin to press the reset button and try again.



3. A login page will show up automatically. You can also manually visit the login page from the web browser via: **http://192.168.11.1** or **http://myrepeater.net** (Note: be sure your device is connected to the extender network when logging in).



The screenshot shows a mobile device screen with a dark status bar at the top. The status bar displays 'LTE', '2:50 PM', and '68%' battery. Below the status bar, the text 'zrlogin.cn' and 'wifi repeater-010b92' is visible. The main content area has a dark green background. At the top of this area, there are navigation arrows, the text 'Log In', and a 'Cancel' button. Below this, there is a white square icon representing a user profile. To the right of the icon, there are three input fields: 'User Name' with the value 'admin', 'Password' (empty), and 'Language' with a dropdown menu showing 'English'. At the bottom right, there is a 'Login' button.

LTE 2:50 PM 68%

zrlogin.cn
wifi repeater-010b92

< > Log In Cancel

User Name admin

Password

Language English

Login

4. The default login details are as follows, in all lower-case letters:

User name:	admin
Password:	admin

*If you can't log in, reset the extender by using a pin to press the reset button then repeating the steps.

5. Once logged in, you will enter the configuration page as follows, click the **"Repeater mode"** to continue the setup.

WI-FI REPEATER Wireless-N Logout

More Range for Wireless Network

Easy Setup

AP Mode Repeater Mode

User-PC Repeater Router Switch Internet

Wi-Fi Status

Work Mode	AP Mode
Status	On
SSID	wifi repeater-010b92
Channel	Automatic
Encryption	Not Wi-Fi Encrypted
Client	2

WiFi Setup

WiFi Setup

Network

IP	192.168.11.1
DHCP	Off
MAC	00:16:79:01:0B:92

Management

Change Password
Restore Factory
Restart Device
Upgrade

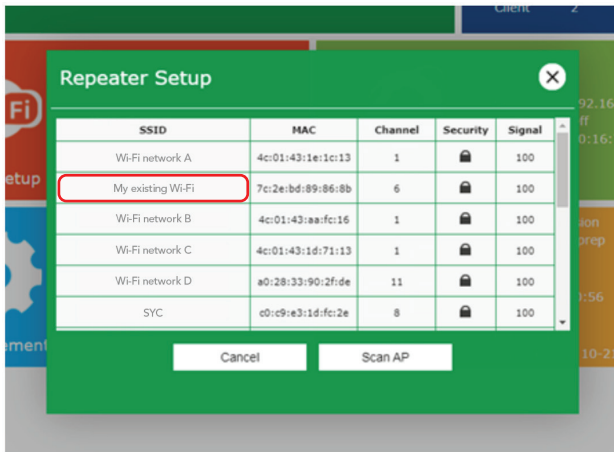
Status

Software Version
v1.9-Tang-aprep

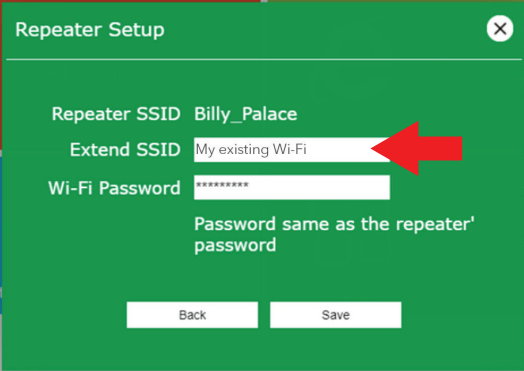
Up Time
0 day, 00:17:48

Release Date
Wednesday, 10-21-2020

6. Wait a moment to scan the wireless network nearby. Then, select your existing wireless network from the list and click "Scan AP" to refresh the list if you cannot find your existing WiFi network.



7. Next, enter the password of your existing network and the name for the extender, then click "Save". (Note: make sure you enter the correct password, otherwise the extender may not be able to connect to your wireless network.)



The image shows a 'Repeater Setup' dialog box with a green background and a white border. It has a close button (X) in the top right corner. The dialog contains three input fields: 'Repeater SSID' with the text 'Billy_Palace', 'Extend SSID' with the text 'My existing Wi-Fi', and 'Wi-Fi Password' with masked characters '*****'. A red arrow points to the 'Extend SSID' field. Below the password field, there is a note: 'Password same as the repeater' password'. At the bottom, there are two buttons: 'Back' and 'Save'.

Repeater Setup

Repeater SSID Billy_Palace

Extend SSID My existing Wi-Fi

Wi-Fi Password *****

Password same as the repeater' password

Back Save

8. The extender setup is complete and will reboot to the name you set. You may connect to the Extender SSID now, use the same password from the original network to log in.

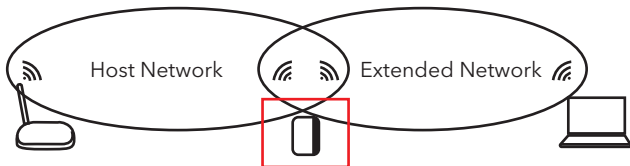


Setup completed,the system is rebooting, please wait.....

Please Wait 23 Second(s)

Relocate:

Once the setup is complete, you may relocate the WiFi extender in between the wireless router and the place you will use it, in order to extend the coverage. Wait for the WLAN indicator to turn solid green, then the network is ready to use. Plug in the extender halfway between your router and the WiFi dead zone. Wait for the WLAN LED to blink and the device is ready to connect.

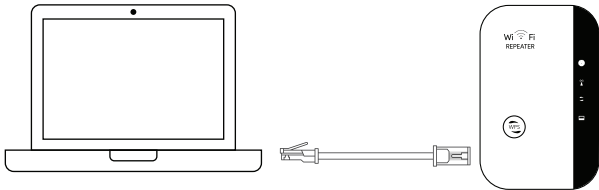


Factory reset

To reset to factory settings, use a pin to press the reset button for at least 8 seconds. Wait for the WLAN indicator switch off and turn solid green again. The device will show up as **"wifi repeater-xxxxxx"** on the available WiFi network on your device list.

Connect via LAN cable

Follow the installation instructions 1 - 7, then connect your device to the LAN cable provided. The network is ready once the LAN indicator is solid green.



Connect via WPS button

WPS is a faster method to connect your extender to the WiFi network. Make sure your router supports WPS and has a button similar to the following icons. Press the button on your router and then the extender within a short period of time. Wait until you see the “xxxxxx_ext” on your nearby network, which means that the setup is complete. The password is the same as your original router.



Troubleshooting

Problem	Possible solution
I cannot find the extender from the WiFi network.	Make sure the extender is powered on and the WLAN indicator is solid green. Try to factory reset the extender if you cannot search for the device.
I cannot log in to the settings page.	Make sure the login and password is correct. Try to reset the device and try again.

I cannot load the login page properly.	Your device may not be compatible, try again using another device, such as a laptop or smartphone.
I cannot scan the original WiFi network from the list.	Make sure the extender and your WiFi router are in range.
I cannot connect to the network or my WiFi password is not correct.	Double-check the password of your original router network and reset the extender.
I tried all of the above but still cannot set up my extender network.	Please contact our customer service for further assistance.

Specifications

Signal rate:	Up to 300 Mbps
Frequency range:	2.4 - 2.4835 GHz
Security type:	WEP, WPA, WPA2, WPA/WPA2
Antenna:	Internal antenna
Product dimension:	4.33 x 2.36 x 2.75 in
Weight:	3.46 oz

*Specifications are subject to change without notice due to factory enhancements.

Get More Support

Scan the QR code below or email us at: contact@wasserstein-home.com



CONTACT US



www.wasserstein-home.com

Made in China