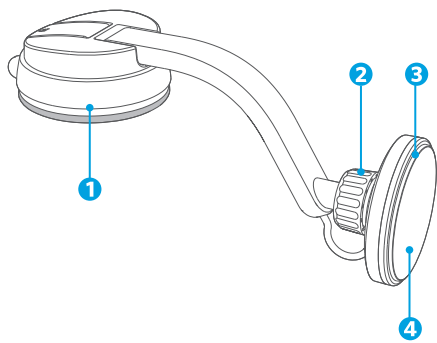


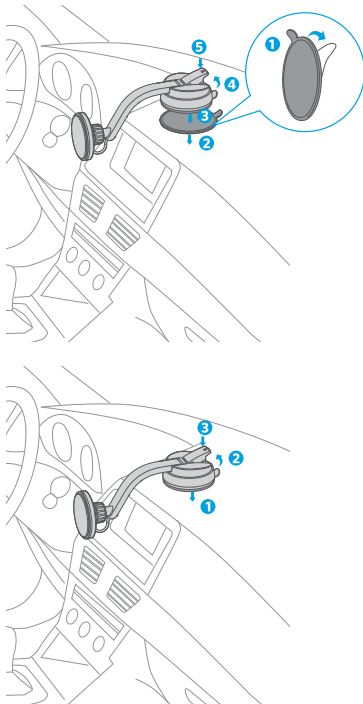
Overview



1. Mounting Base
2. Adjusting Screw
3. Led Indicator
4. Wireless Charging Pad

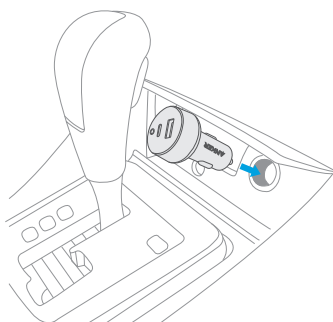
Using Your Wireless Charger

1. Position your Wireless Charger on a center panel

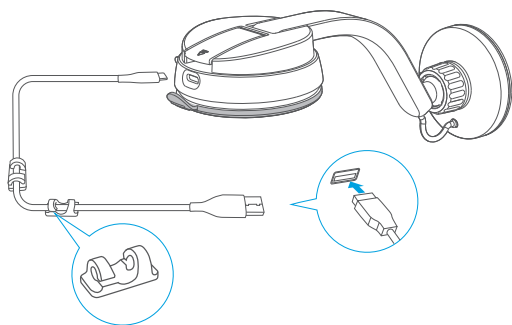


- Do not place the Wireless Charger on airbag modules, as doing so may result in serious injury.
- Do not insert the Wireless Charger into a vent.

2. Insert a car charger into the cigarette lighter of a vehicle

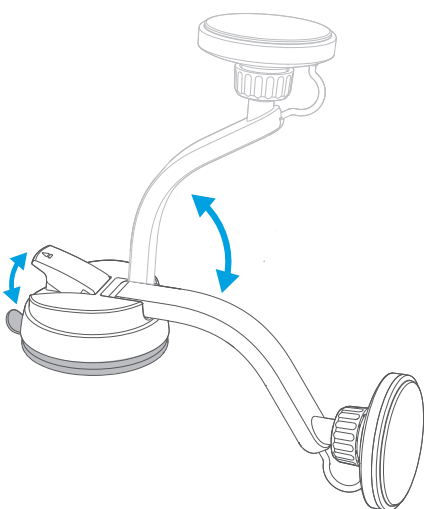
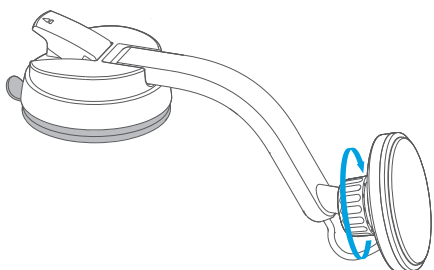
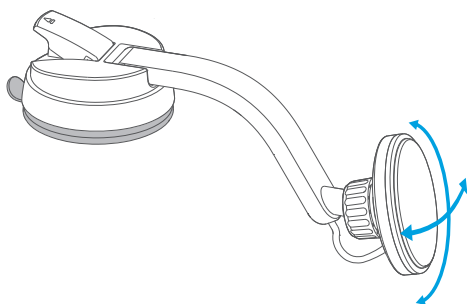


3. Connect the Wireless Charger to the car charger using the power cable



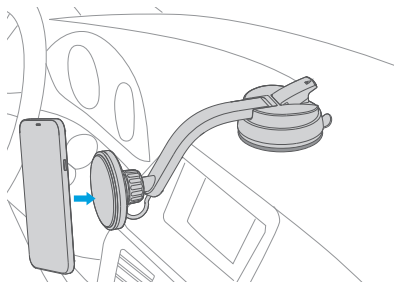
- ⚠ • When running the cable from the Wireless Charger to the car charger, ensure the cable does not affect safe driving. The steering wheel should move freely, all pedals should work normally, turn signal and wiper stalks should also move smoothly.
- Use the cable clips to fix the cable in place.

4. Adjust the Wireless Charger to the optimal viewing angle



- ⚠ • Be careful when removing or handling plastic parts of the Wireless Charger. Unnecessary force or pressure can cause pieces to crack or break.
- Do not over-rotate the wireless charging pad or attempt to detach the ball joint lock, otherwise, the wire near it may be destroyed or the product won't be able to charge normally.

5. Charge your phone



LED Indicators	Status
Light up one by one quickly, then stay solid white	Connected to power
Solid white (100% brightness)	Charging your device
Solid white (50% brightness)	Standby mode
Flash white	Metal objects detected
Only Led lights on the two sides flash white	<ul style="list-style-type: none">• Overvoltage or undervoltage protection• Incompatible power adapter connected, indicating that you need to switch to a Quick Charge 2.0/3.0 or Power Delivery car adapter