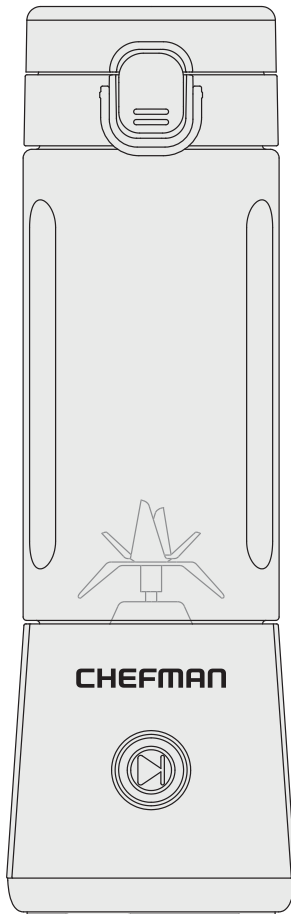




CHEFMAN.

Cordless Portable Blender



RJ28-R-SERIES





Get to Know Your Blender

1. Motor base
2. START button with 5-color LED
3. Charging cable port (on back, not shown)
4. Blade assembly
5. Blender jar
6. Lid button lock
7. Lid open button
8. Sipping spout
9. Sipping lid (front view)
10. Sipping lid (back view)
11. Lid carrying ring
12. Lid carrying strap
13. Blade cover
14. Blender jar bottom cover
15. Charging cable



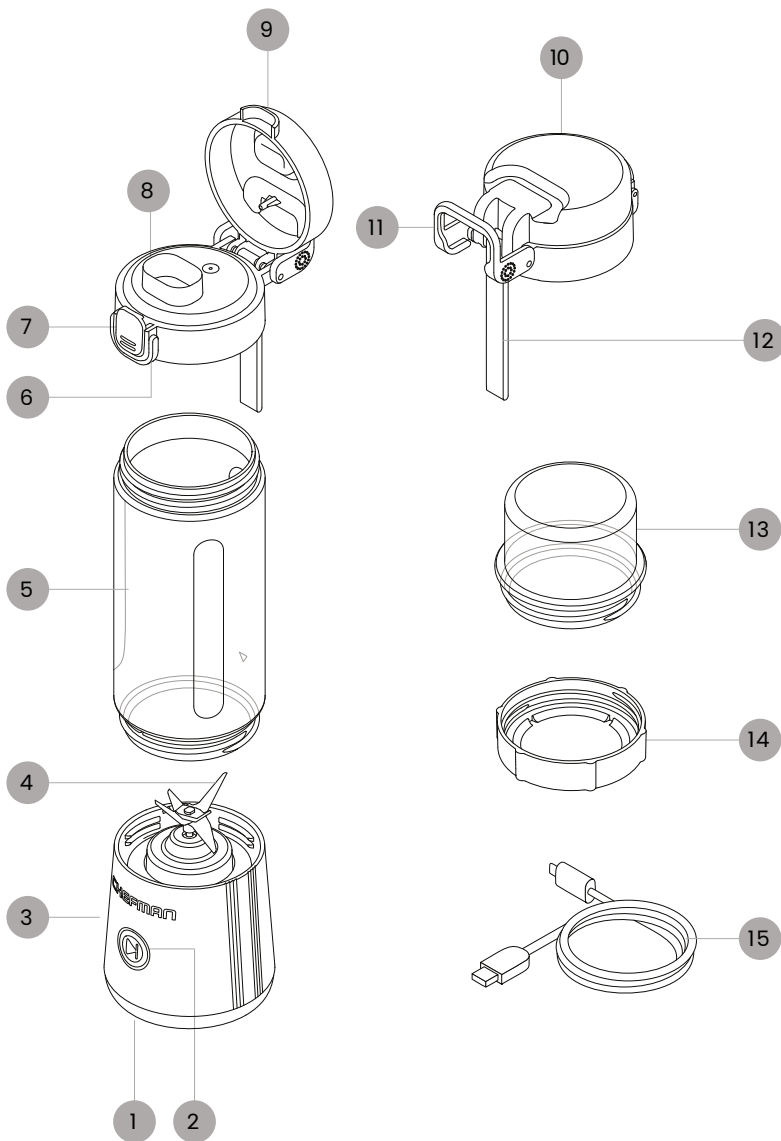
READ ALL INSTRUCTIONS BEFORE USE

For your safety and continued enjoyment of this product, always read the instruction manual before using.





Get to Know Your Blender





SAFETY INSTRUCTIONS & IMPORTANT SAFEGUARDS

When using electrical appliances, basic safety precautions should always be followed, including:

1. Read all instructions.
2. To protect against risk of electrical shock do not put the unit base in water or other liquid.
3. This appliance is not intended for use by persons (including children) with reduced physical, sensory, or mental capabilities, or lack of experience and knowledge, unless they are closely supervised and instructed concerning use of the appliance by a person responsible for their safety.
4. Close Supervision is necessary when any appliance is used by or near children. Children should be supervised to ensure that they do not play with the appliance.
5. Turn the appliance **OFF**, before assembling or disassembling parts and before cleaning.
6. To unplug after charging, grasp the plug and pull from the blender.
7. Avoid contacting moving parts. Do not attempt to defeat any safety interlock mechanisms.
8. **Do NOT** operate any appliance after the product malfunctions or is dropped or damaged in any manner. Contact Chefman Customer Support for examination, repair, or adjustment.
9. The use of attachments, including canning jars, is not recommended by the manufacturer and may cause injuries to persons.
10. **Do NOT** use outdoors.
11. Keep hands and utensils out of container while blending to reduce the risk of severe injury to persons or damage to the blender. A scraper may be used but must be used only when the blender is not running.
12. Blades are sharp. Handle carefully.
13. Always operate blender with cover in place.
14. **Do NOT** place on or near a hot gas or electric burner, or in a heated oven.
15. **Do NOT** blend Hot Liquids.



SAFETY INSTRUCTIONS & IMPORTANT SAFEGUARDS

16. **Do NOT** incinerate this appliance even if it is severely damaged. The batteries can explode in a fire.
17. The appliance should only be used with the battery charger packaged with the appliance or those battery chargers according with Listed/Certified Information Technology (Computer) Equipment or, Listed/Certified ITE Power Supply or Listed Class 2 Power Unit.

SAVE THESE INSTRUCTIONS FOR HOUSEHOLD USE ONLY



California Proposition 65:

(Applicable for California Residents only)
WARNING: Cancer and Reproductive Harm
www.P65Warnings.ca.gov

Do not place the appliance on a
stovetop or any other heatable surface,
even if stovetop is not on.
Doing so is a fire hazard.





Before First Use

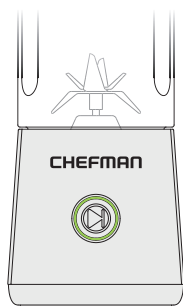


1. Remove all packaging materials and check to ensure that all parts and accessories are accounted for.
2. Wipe down the motor base with a damp cloth to remove any packaging residue.
3. Wash the blending jar, lid, blade cover and blending jar bottom cover with warm, soapy water, and dry thoroughly. (These parts are also all top-rack dishwasher safe).
4. Charge the blender according to the directions below.

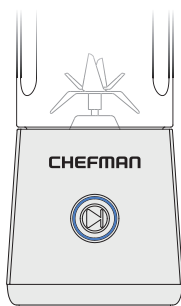
How to Charge the Blender

1. Plug the small end of the included charging cable into the port on the back of the base. Insert the other end into a standard USB-C charging block (not included) and plug the block into a wall outlet.
2. The LED ring around the **START** button will slowly pulse red, then yellow, then blue as the unit charges. When it is fully charged, the LED ring will turn solid green. It will take approximately 4 hours for an empty battery to fully charge.
3. When ready to use the blender, unplug from the charging cable. The LED light will change from green to blue when you start to use it, and then display the same colors as the battery discharges as it did when charging (but solid rather than pulsing).

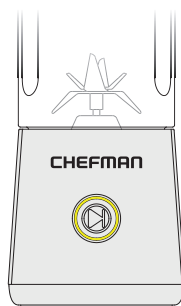
Battery Charge Indicator Colors



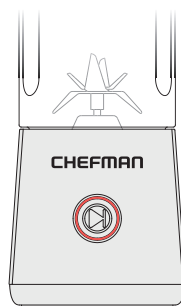
GREEN
fully charged



BLUE
40-99% charged



YELLOW
20-40% charged



RED
0-20% charged





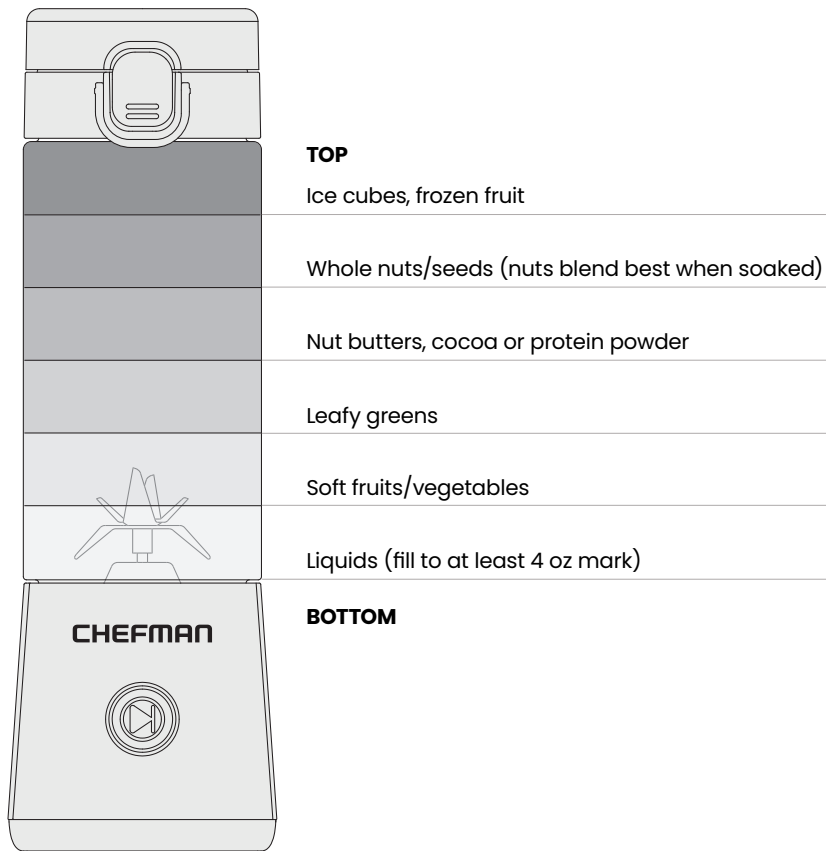
How to Use the Blender

1. Set the motor base on a clean, dry work surface.
2. With the blending jar upright (numbers facing the correct way), screw the blender jar onto the motor base, turning clockwise until snug.
3. Add the food to be processed to the blending jar, up to but not over the 16 oz/480 ml marking. See How to Layer Ingredients, p. 8, for the best way to fill your blender. **CAUTION:** Do not blend ice alone without any liquid.
4. Place the lid on the jar and tighten by turning clockwise until snug. Make sure the lid is closed and locked before blending.
5. To process, press the **START** button twice. The blender will operate for 30 seconds, then automatically turn off. Repeat blending as many times as necessary. **NOTE:** After the fourth or fifth blend, it's a good idea to let the blender rest briefly to avoid overheating and extend the life of the motor.
6. Alternatively, put the blender in pulse mode by pressing and holding the **START** button for 3 seconds—the LED ring will turn purple. You can then blend in short bursts by pressing and releasing the button. (The blender will return to its default blend mode after 1 minute of inactivity.)
7. When finished blending, turn the unit over and unscrew the motor base. Replace the base with the blender jar bottom cover, twisting clockwise until snug. (For safety, screw the blade cover onto the motor base for storage or when not in use.) Alternatively, you can take the blender on the go with the base still attached—for instance, if you want to re-blend just before drinking. **WARNING:** Do NOT place the full blender with motor base attached in the refrigerator.
8. The blender is now ready to take on the go. It can be carried by either the carrying ring or strap on the lid. Be sure the lid button lock is over the button so it doesn't accidentally open in transit.
9. To open the lid for drinking, press the button and gently press the lid back until it locks open, so it doesn't flop down.



How to Layer Ingredients

For the best, most even blending, it's important to add your ingredients to the blender in an order that will allow for free movement of the blades and prevent anything from getting stuck. Most ingredients should be cut into 1-inch chunks, though soft ingredients like bananas can be larger. Here's how to layer them:





Keep It Clean

1. For the easiest everyday cleaning, clean the blender as soon as you're finished using it. Reassemble the blender and fill with water and a few drops of mild soap. Blend to clean the jar and blade assembly. Discard and rinse with clean water.
2. If there is food stuck to the blade, clean it with a wet brush and carefully wipe clean with a kitchen cloth. **CAUTION:** The blades are **SHARP!** Take care when cleaning them by hand. **CAUTION:** Do not immerse the motor base in water or any liquid, or let water get into the **START** button or charging port.
3. The removable parts (blending jar, lid, blade cover, and blender jar bottom cover) are also top-rack dishwasher safe.
4. After washing, be sure the gasket in the lid cover is still securely in place (if not, push back into place).
5. **User Maintenance:** Any other servicing should be performed by an authorized service representative.





Having Trouble?

Problem	Likely Cause	Solution
The sip lid leaks.	Lid cover came unlocked or the spout-sealing gasket in the cover is loose.	Press the lid button lock in place; push the gasket in place until it's completely seated.
The START button's LED flashes purple or the bottom of the jar leaks.	Jar is not screwed on tightly to the motor base or jar bottom cover.	When attaching the jar to either of these bases, twist them counterclockwise until snug.
The START button's LED flashes white.	Blades are blocked with a piece of ice or another hard ingredient.	Shake unit, turn unit over, or put in locked mode and use a long utensil to dislodge.
The START button's LED flashes yellow.	Unit has overheated.	Stop using the blender for 15 to 20 minutes to allow it to cool down.
The START button's LED flashes red.	Problem with charging.	Replace the USB-C charging cord and/or block. If this does not resolve the issue, contact Chefman Customer Support.





Terms & Conditions

Limited Warranty

RJ Brands, LLC d/b/a Chefman® offers a limited 1-year Warranty (the “Warranty”) available on sales through authorized distributors and retailers only. Please note that this Warranty becomes valid from the date of initial retail purchase and that the Warranty is nontransferable and applies only to the original purchaser.

This Warranty is void without proof of purchase within the United States and Canada. Please be aware that this Warranty supersedes all other warranties and constitutes the entire agreement between the consumer and Chefman®. Any changes to the Terms and Conditions of this Warranty must be in writing, signed by a representative of Chefman®. No other party has the right or ability to alter or change the Terms and Conditions of this Warranty.

We may ask you to please submit, via email, photos and/or video of the issue you are experiencing. This is to help us better assess the matter and possibly offer a quick fix. Photos and/or video may also be required to determine Warranty eligibility.

We encourage you to register your product. Registering can make the Warranty process easier and can keep you informed of any updates or recalls on your product. To register, follow the directions on the Chefman® Warranty Registration page in the Chefman® User Guide. Please retain your proof of purchase even after registering. In the event that you do not have proof of your purchase date, we may declare your Warranty void or we may, at our sole discretion, apply the date of manufacture as the purchase date for purposes of this Warranty.



Terms & Conditions

What the Warranty Covers

- **Manufacturer Defects**

Chefman® products are warranted against defects in material and workmanship, under normal household use, for a period of 1 year from the date of purchase when used in accordance with the directions listed in the Chefman® User Guide. If your product does not work as it should, please contact Customer Support at support@chefman.com so that we may assist you.

This Warranty Does Not Cover

- **Misuse**

Damage that occurs from neglectful or improper use of products, including, but not limited to, damage that occurs as a result of usage with incompatible voltage, regardless of whether the product was used with a converter or adapter. See Safety Instructions in the Chefman® User Guide for information on proper use of product;

- **Poor Maintenance**

General lack of proper care. We encourage you to take care of your Chefman® products so that you may continue to enjoy them. Please see Keep It Clean directions in this Chefman® User Guide for information on proper maintenance;

- **Commercial Use**

Damage that occurs from commercial use;

- **Normal Wear and Tear**

Damage or degradation expected to occur due to normal use over time;

- **Altered Products**

Damage that occurs from alterations or modifications by any entity other than Chefman® such as the removal of the rating label affixed to the product;

- **Catastrophic Events**

Damage that occurs from fire, floods, or natural disasters; or

- **Loss of Interest**

Claims of loss of interest or enjoyment.





Terms & Conditions

For product information, please visit us at Chefman.com.

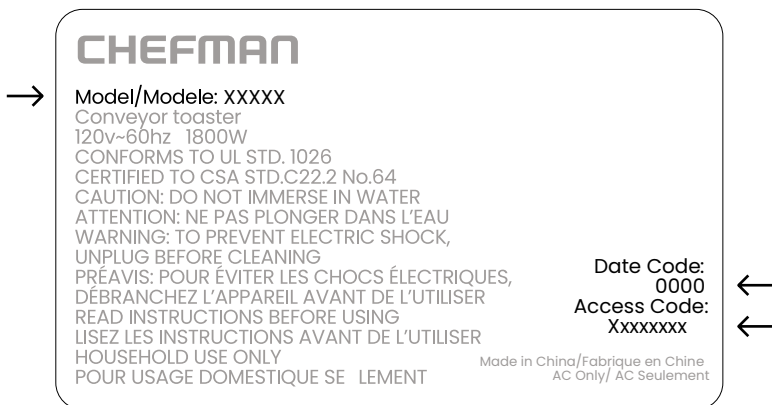
EXCEPT WHERE SUCH LIABILITY IS REQUIRED BY LAW, THIS WARRANTY DOES NOT COVER, AND CHEFMAN® SHALL NOT BE LIABLE FOR, INCIDENTAL, INDIRECT, SPECIAL, OR CONSEQUENTIAL DAMAGES, INCLUDING WITHOUT LIMITATION, DAMAGE TO, OR LOSS OF USE OF THE PRODUCT, OR LOST SALES OR PROFITS OR DELAY OR FAILURE TO PERFORM THIS WARRANTY OBLIGATION. THE REMEDIES PROVIDED HEREIN ARE THE EXCLUSIVE REMEDIES UNDER THIS WARRANTY, WHETHER BASED ON CONTRACT, TORT OR OTHERWISE.



Warranty Registration

What do I need to register my product?

- Contact Information
- Model Number (see example below)
- Proof of Purchase (online confirmation, receipt, gift receipt)
- Date Code (see example below)
- Access Code (see example below)



NOTE: Label depicted here is an example.

Please see label on your product for actual model/date code/access code.

How do I register my product?

All you need to do is fill out a simple Chefman® registration form. You can easily access the form in one of the two ways listed below:

- Visit Chefman.com/register.
- Scan the QR code to the right to access site.





CHEFMAN.

Cordless
Portable Blender

RJ28R-SERIES-UG-030625

Chefman® is a registered trademark of RJ Brands, LLC.

