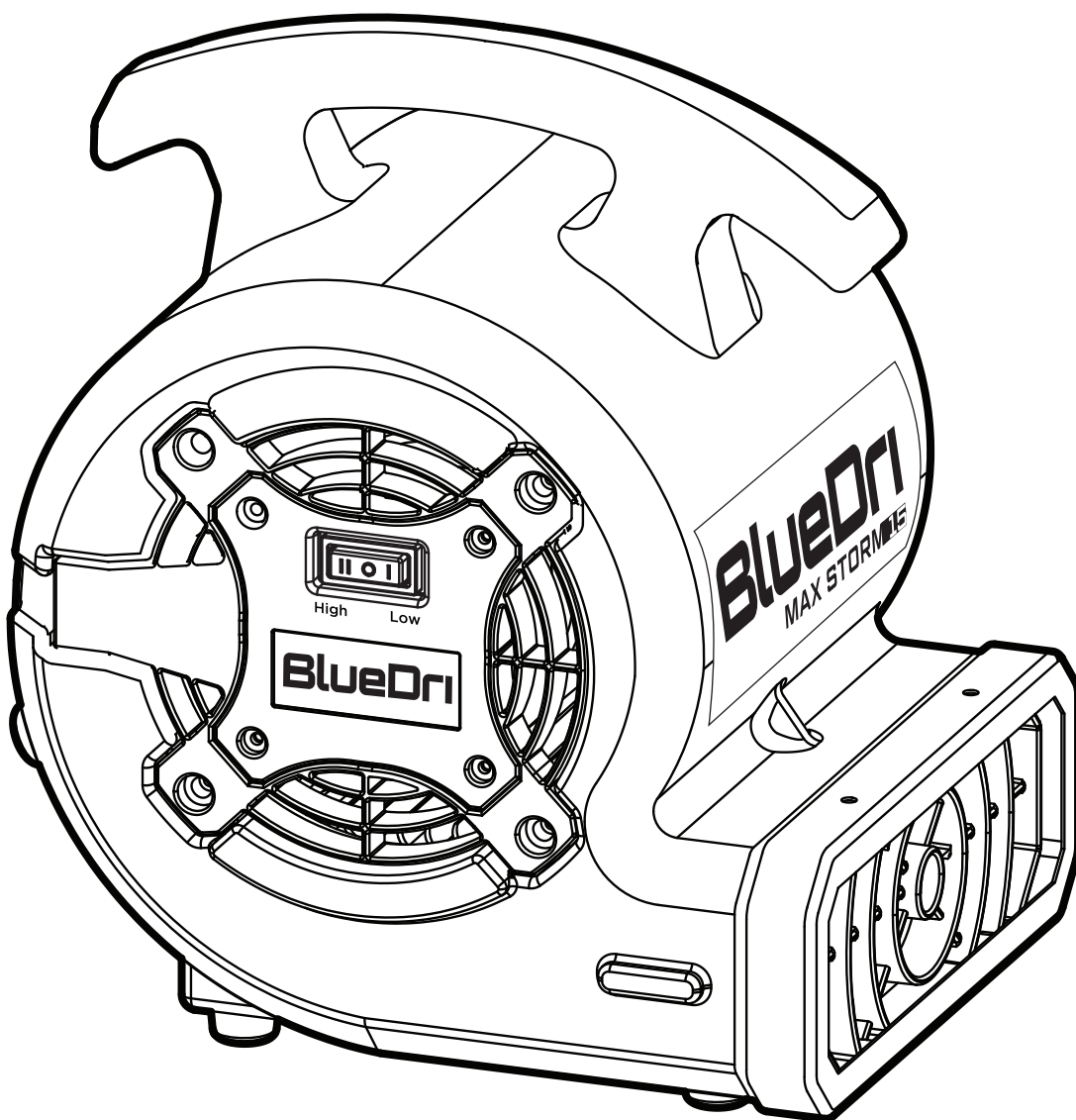

Owner's Manual | BD-MS15

BlueDri[®] MINI MAX STORM 15 AIR MOVER



Read and save these instructions.

BlueDri



WARNING



IMPORTANT SAFETY INSTRUCTIONS

When using electrical appliances, these instructions and warnings should always be followed to reduce the risk of fire, electrical shock and injury to persons:



Read and Save All Instructions Before Using this Fan.



WARNING

TO REDUCE THE RISK OF FIRE, ELECTRICAL SHOCK OR PERSONAL INJURY, ALWAYS FOLLOW THESE IMPORTANT SAFETY INSTRUCTIONS AND WARNINGS:



DO NOT use this Fan to ventilate areas where flammable liquids or vapors are used, stored or are present, including paints, gasoline, varnishes, floor refinishing products or solvents. **ALWAYS** read and follow all warnings and instructions on the containers for these products!



ALWAYS be sure the plug fits tightly into the outlet. When plugs fit loosely into outlets, they may slip partially out of the outlet and create a poor connection. This may cause outlets to overheat and create a potential fire hazard. Outlets in this condition should be replaced by a qualified electrician.



ALWAYS unplug the power cord when servicing, cleaning or moving the Fan. **DO NOT** use the ON/OFF switch as the sole means of disconnecting power. **NEVER** leave children unattended when the Fan is on or plugged in. **ALWAYS** turn off and unplug the Fan when not in use.



Use **ONLY** GFCI protected receptacles if utilizing as an installation type Fan.



BE CERTAIN that the power source for the Fan is 120V AC. **DO NOT** plug the Fan into 240V or other power source. The power cord is equipped with a three-prong grounded plug that must be inserted into a matching receptacle. Under no circumstances should the grounding prong be cut off the plug. Where a two-prong wall receptacle is encountered, it must be replaced with a properly grounded three-prong receptacle installed in accordance with the National Electrical Code (NEC) and all applicable local codes and ordinances. This work must be done only by a qualified electrician, using copper wire only.

DO NOT USE A THREE-PRONG TO TWO-PRONG ADAPTER. IMPROPER CONNECTION MAY CREATE THE RISK OF ELECTRICAL SHOCK. USE OF SUCH ADAPTERS IS NOT PERMITTED IN CANADA.

WARNING: TO REDUCE THE RISK OF FIRE OR ELECTRICAL SHOCK, DO NOT USE THIS FAN WITH ANY SOLID STATE SPEED CONTROL DEVICES.



CAUTION

**To reduce the risk of fire or electric shock,
Do not use this fan with any solid-state speed control device.**

- **DO NOT** operate any fan with a damaged cord or plug. Discard fan or return to an authorized service facility for examination and/or repair.
- Unplug or disconnect the unit from power supply before servicing.
- **DO NOT** use extension cords, power strips, power taps, outlet style air fresheners or other cord connected device, as these devices may overheat and cause a fire hazard.
- **DO NOT** route power cord under rugs, carpets, runners or furniture. This may damage the cord or cause it to overheat creating a fire hazard.
- **ALWAYS** place the fan on a stable, flat, level surface while in operation to prevent the fan from overturning.
- **NEVER** insert or allow fingers or objects to enter grill openings while fan is in operation or injury and/or damage to the fan may occur.
- **DO NOT** block, cover or obstruct air flow to or from the fan while in operation.
- **DO NOT** use this fan outdoors or near wet locations such as a bath tub, pool, hot tub or pooled water. Use of this fan in a wet location may create a shock hazard.
- **DO NOT** run cord under carpeting. Do not cover cord with throw rugs, runners, or similar coverings. Do not route cord under furniture or appliances. Arrange cord away from traffic area where it will not be tripped over.
- **DO NOT** use this fan if it has been damaged or is not functioning properly.
- **DO NOT** operate unit in stacked position.
- **WARNING:** To reduce the risk of fire, electric shock, or injury to persons, do not use replacement parts that have not been recommended by the manufacturer (e.g. parts made at home using a 3D printer).
- **THIS FAN DOES NOT MEET THE REQUIREMENTS OF NEC ARTICLE 547-7 (2008).** This Fan is not suitable for use in agricultural facilities including areas where livestock, poultry or other animals are confined. Please refer to National Electric Code (NEC) Article 547-7 (2008), or applicable state or local codes or standards relating to electrical requirements for agricultural buildings.
- **THIS FAN DOES NOT MEET THE REQUIREMENTS OF NEC ARTICLE 500 (2008).** This Fan is not suitable for use in hazardous locations. Please refer to National Electric Code (NEC) Article 500 or applicable state or local codes or standards relating to electrical requirements for hazardous locations.

Introduction

The BD-MS15 is a perfect companion for all drying and ventilation needs at home. It can be used for drying wet carpet, painted walls, furniture and floors, and may also be used for ventilation. Compact yet powerful, the BD-MS15 is perfect for use in crawl spaces, cabinets, closets, or any other cramped areas that need to be dried.

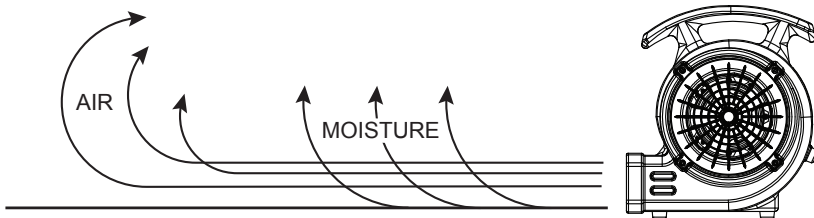
Product Features

- No assembly required
- 2 speed operation
- Energy efficient – draws only 1.3A on high
- Integrated cord wrap
- 3 operating positions - 0°, 45° or 90°
- Stackable – Up to 5 units high

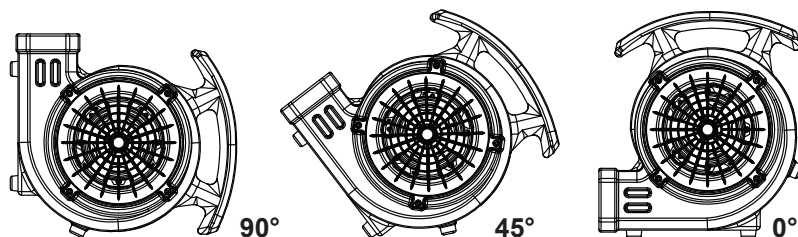
Operation

- 1) Place the unit on a level and stable surface.
- 2) Plug the unit into a 120 volt grounded GFCI outlet with the correct voltage and amperage. For maximum protection against electrical shock, ALWAYS use a circuit that is protected by a ground fault circuit interrupter. If you are unsure about the outlet, check with a qualified electrician or service person. Do not use an adapter or extension cord.
- 3) To switch the unit on, locate the control panel and push switch to low or high speed setting.
- 4) The multipurpose design allows operating positions for horizontal, 45° and 90° angles. The balanced handle also acts as an optimum cord wrap assembly freeing the BD-MS15 of obstructions.

Air Flow

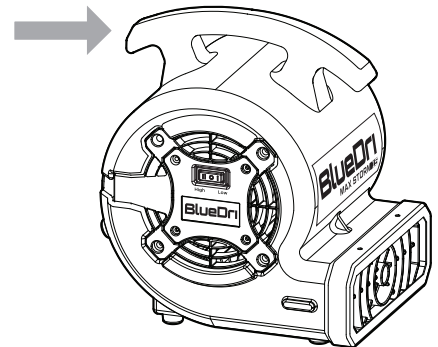


Operating Positions



Transportation

Transport the Fan using the handle on top of the unit.



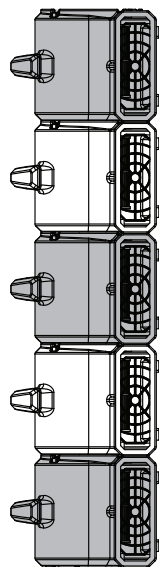
Stack Multiple Units

Stack the fans on top of each other as shown.

WARNING

Do not stack more than five units of this appliance.

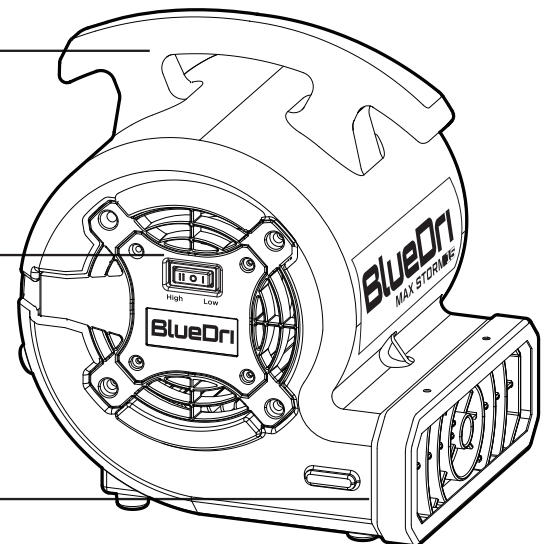
Stacking function is not secure during transportation.



Balanced Carrying Handle

Control Panel
• High or Low Speed

Exhaust Outlet



SAFETY FEATURE

1. A thermal overload protector is built in to prevent overheating.
2. If an overheat temperature is reached, the Air Mover will automatically shut off. It can only resume operation when the user resets the unit.

To Reset Air Mover:

1. Unplug the Air Mover and wait 10 minutes for the heater to cool down.
2. After the Air Mover has cooled down, plug the unit into a 120v~ electrical outlet and follow the operation instructions described in this manual.

MAINTENANCE



WARNING

To reduce the risk of electrical shock and fire please observe the following instructions:



- Always unplug the cord before moving, servicing or cleaning.
- NEVER place the Fan in or near water.
- Clean the Fan only with a vacuum equipped with a brush attachment; the vacuum will remove the lint and dirt from inside the Fan.



- Never attempt to take apart the Fan.
- Clean the body of the Fan with a soft cloth only.
- NEVER use ALCOHOL or SOLVENTS such as gasoline, benzene, paint thinner, or other harsh cleaners.

TROUBLE SHOOTING TIPS

If your Fan fails to operate, see below for a list of probable cause and solution:

Be sure the power cord is plugged into a working electrical outlet.

If you have a problem that can not be resolved by the steps listed above, contact Technical Assistance at (800) 233-0268, Monday through Friday, between the hours of 8:00 a.m. and 5:00 p.m. Eastern.

STORAGE: Store the Fan with these instructions, in the original carton in a cool, dry place.

LUBRICATION: Motor is permanently lubricated. No maintenance is required.

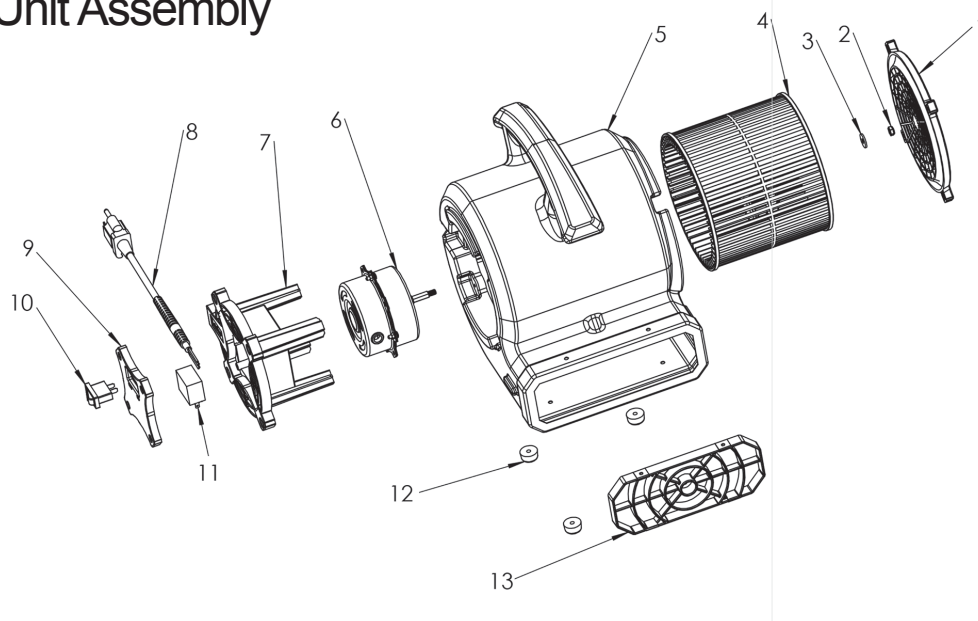
DISPOSITION: Corrugated packaging materials are recyclable. For environmentally responsible disposal of this product, contact your local waste service provider or visit www.1800recycling.com.

THE BLUE PLUG™ on your Lasko fan is a safety feature. It contains a non-replaceable safety device (fuse) that should not be removed or tampered with. To reduce the risk of fire, electric shock and personal injury, DO NOT attempt to remove, replace, repair or tamper with the originally supplied plug. If the Fan has stopped functioning, it may be due to the safety device incorporated in this plug. Call 800-233-0268, Monday - Friday, between 8:00 a.m. and 5:00 p.m. Eastern for questions. If the plug warning label is missing or damaged, call the toll free number for a replacement label.

Troubleshooting

Problem	Possible Cause/Solution
Unit will not run	<ul style="list-style-type: none">• No power to unit-Plug it in. Check circuit breaker• Switch not on-Place in "ON" position.• Switch is faulty-Replace switch.• Faulty/broken cord or motor wire-Perform continuity check, using volt/amp meter. Repair/replace faulty broken wire.
Unit runs but air mover makes loud scraping noise	<ul style="list-style-type: none">• Unit has been severely jolted causing blower wheel to rub against housing-Remove motor and replace damaged motor mounts.• Unit has been severely jolted causing housing to deform-Replace blower wheel.
Unit runs but vibrates excessively	<ul style="list-style-type: none">• Severe jolt has bent motor shaft causing unit to be out of balance-Remove and replace motor.• Air mover blade damaged-Replace blade if necessary.• Dirt build up on one side of air mover blade-Clean air mover blade.
Unit runs but blower wheel does not turn	<ul style="list-style-type: none">• Motor bearings are falling or motor has developed an internal electrical fault-Replace motor.• Intake grill and/or exhaust grill is obstructed-Replace blade if necessary.• Excessive duct length-Reduce duct length to recommended maximum.

Unit Assembly



Item	Description	QTY
1	Inlet Grill	1
2	Nut	1
3	Gasket	1
4	Fan Wheel	1
5	Housing	1
6	Motor	1
7	Switch Box	1
8	Power Cord with Fuse	1
9	Switch Panel	1
10	Switch	1
11	Capacitor	1
12	Rubber Feet	4
13	Outlet Grill	1

LIMITED MANUFACTURER'S WARRANTY

Intertex, LLC warrants that this product sold to the original user (the "User") shall be free from defects in material and workmanship as follows:

This limited warranty shall extend for 1 year for the entire Product and five (5) years on the Product housing. At the sole discretion of the manufacturer, the limited warranty may include replacement parts, labor for repair or replacement of the Product.

The User shall provide proof of purchase to establish coverage under this limited warranty.

This limited warranty shall not cover:

1. Useful filter life and replacement filters.
2. Damage due to failure to perform normal maintenance as outlined in the Instruction Manual.
3. Failures of the Product due to voltage conditions, blown fuses, open circuit breakers, or any other damages due to the inadequacy or interruption of electrical services.
4. Damage due to consumer misuse or failure to follow instructions or warnings, including but not limited to unauthorized alteration, improper servicing or operation outside the voltage and frequency limitations as stated on the unit rating plate.
5. Damage due to flooding, fires, lightning, freezing of residual water, corrosive environment, or other conditions.
6. Damage due to use of replacement parts not supplied by the manufacturer.
7. Shipping damage.

Further, the manufacturer does not warrant that the Product is merchantable or fit for any particular purpose. All other warranties, guaranties, or representations, express or implied, by operation of law or otherwise, are expressly disclaimed.

Returned Product for limited warranty service which is found by the manufacturer to be free from defect and to conform to specifications shall be held for a reasonable period of time (as determined in the sole discretion of the manufacturer) for the User's shipping instructions and payment.

The manufacturer shall not be liable under any circumstances for special, contingent, incidental or consequential damages, losses, damages, or expenses directly or indirectly arising from the use of the Product, including without limitation, warehousing, labor, handling and service charges, die, equipment, or machine breakage, lost profits or loss of good will.

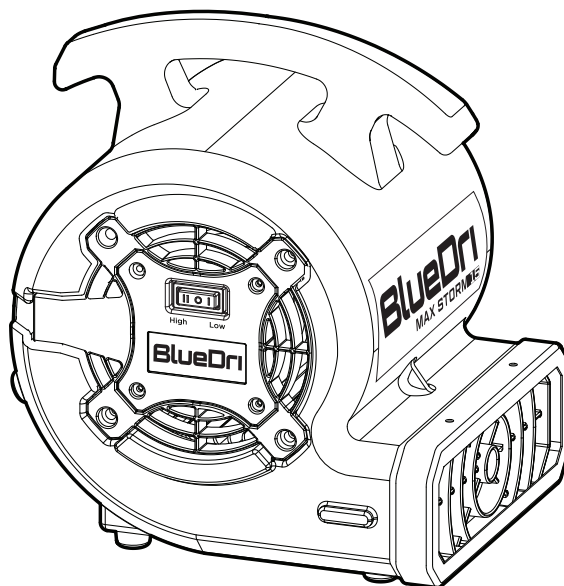
Any replacement parts supplied under this limited warranty will be warranted for the balance of the Product's limited warranty.

For warranty information and assistance contact customer service at 877.800.2247 or email support@bluedri.com

Unit Specifications

VOLTS	120V
POWER	1/8 HP
CYCLE	60 Hz
MAX AIR VOLUME	600 CFM
AMPS LOW/MID/HIGH/SPEED	1.3 AMPS
WEIGHT	8.5 LBS
SIZE L/W/H	H 12.7", W 9.7", D 11.4"
SPEED	2 SPEEDS
CORD LENGTH	6'

Specifications are subject to change without notice.



Owner's Manual | BD-MS15

BlueDri[®] MINI AIR MOVER

Intertex, LLC
Lasko.com
820 Lincoln Ave
West Chester, PA 19380