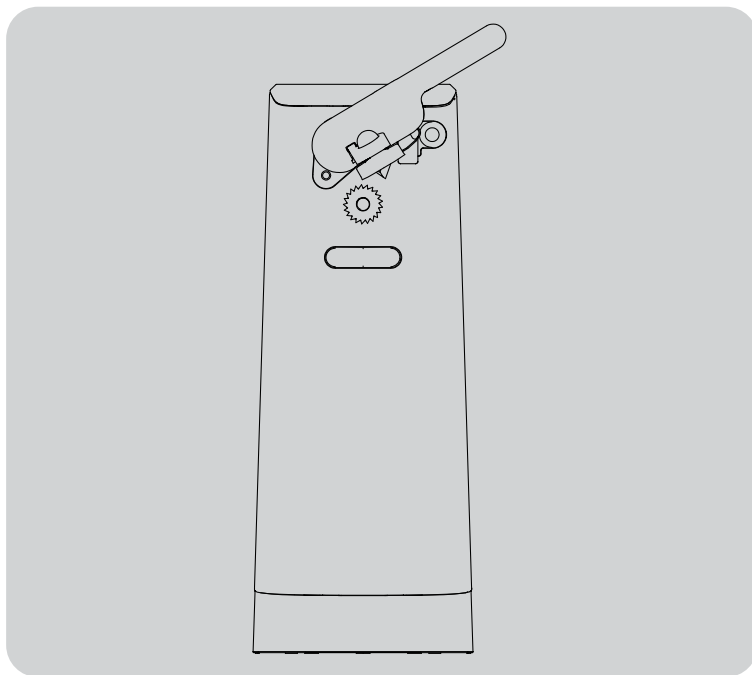


morphy richards®

Smart Ideas for Your Life



3-in-1 Electric Can Opener



Model: MRCO5SS

**Read these instructions carefully before
using this appliance for the first time**

For product hints and tips plus more join us at

[**www.morphyrichards.com.au**](http://www.morphyrichards.com.au)



facebook.com/MorphyRichardsAUS



instagram.com/morphyrichardsau

IMPORTANT SAFETY INSTRUCTIONS

Before using this product, please read and understand this instruction manual carefully, and keep it in a safe place.

- This appliance must be used in accordance with the instructions and must not be used for other purposes.
- This appliance is not intended for use by persons with reduced physical, sensory or mental capabilities or lack of experience and knowledge unless they have been given supervision or instruction concerning use of the appliance by a person responsible for their safety.
- Children should be supervised to ensure that they do not play with this appliance.
- In the absence of supervision, the cleaning and maintenance work should not be done by a child.
- To protect against electric shock, do not immerse appliance in water or other liquid.
- Unplug from the outlet when not in use, or when left unattended, and before assembling, disassembling or cleaning.
- Use of accessories not recommended or sold by the original manufacturer may cause risks of fire, electric shock or personal injury.
- This appliance is intended to be used in household and similar applications such as:
 - staff kitchen areas in shops, offices and other working environments;
 - farm houses;
 - by clients in hotels, motels and other residential type environments;
 - bed and breakfast type environments.

IMPORTANT SAFETY INSTRUCTIONS

- **WARNING:** The blades are very sharp. Handle with care when using and cleaning.
- **WARNING:** Make sure the can opener is not loaded before connecting or disconnecting the power supply and left unattended.
- Do not use accessories or components made by other manufacturers.
- Do not use to open pressurised cans.
- Do not open cans of flammable liquids such as lighter fluids.
- Avoid touching moving parts. Keep hands, hair and clothing away from the blade during operation, to prevent personal injury and/or damage to the appliance.

Location

- **WARNING:** Do not place the appliance on a metal tray or surface whilst in use.
- For indoor use only. Do not use outdoors or near water.
- Ensure the appliance is placed on a firm, flat surface.
- Do not place the appliance on or near hot surfaces such as hot plates, radiant rings or near naked flames.

Power cord

- To protect against electric shock, do not touch the plug with wet hands or immerse the power cord, plug, or appliance in water or other liquid.
- If the power cord is damaged, it must be replaced by the manufacturer or its service agent or a similarly qualified person in order to avoid a hazard.

IMPORTANT SAFETY INSTRUCTIONS

- The power cord should reach from the socket to the appliance without straining the connections.
- Remove the plug from the socket, grasp the plug and pull out the power cord, do not pull on the cord directly.
- Do not let the cord hang over the edge of the table or counter and keep it away from any hot surfaces.
- Do not let the cord run across an open space e.g. between a low socket and table.
- Do not modify or lengthen the power cord of this product in any way.

Personal safety

- **WARNING:** To protect against the risk of electric shock, NEVER immerse the appliance in water or in any other liquid and always ensure the electrical connections are kept dry.
- Do not operate any appliance with a damaged cord or plug, or after an appliance has malfunctioned, or has been dropped or damaged in any way.
- Unplug from outlet when not in use and before cleaning. Allow to cool completely before removing or adding parts, and before cleaning the appliance.
- Always unplug when not in use.

Electrical requirements

- **WARNING:** This appliance should NOT be used with extension leads and/or power boards.
- Check that the voltage on the rating label of your appliance corresponds with your house electricity supply which must be A.C.

SPECIFICATIONS

Model:	MRCO5SS
Colour:	Black & Stainless Steel
Rated Power:	50W
Rated Voltage:	220-240V~ 50-60Hz
Dimensions (W x D x H):	95 x 141 x 246mm
Net Weight:	0.96kg

PRODUCT OVERVIEW

1. Guide Pin

2. Magnetic Lid Holder

3. Cutting Lever

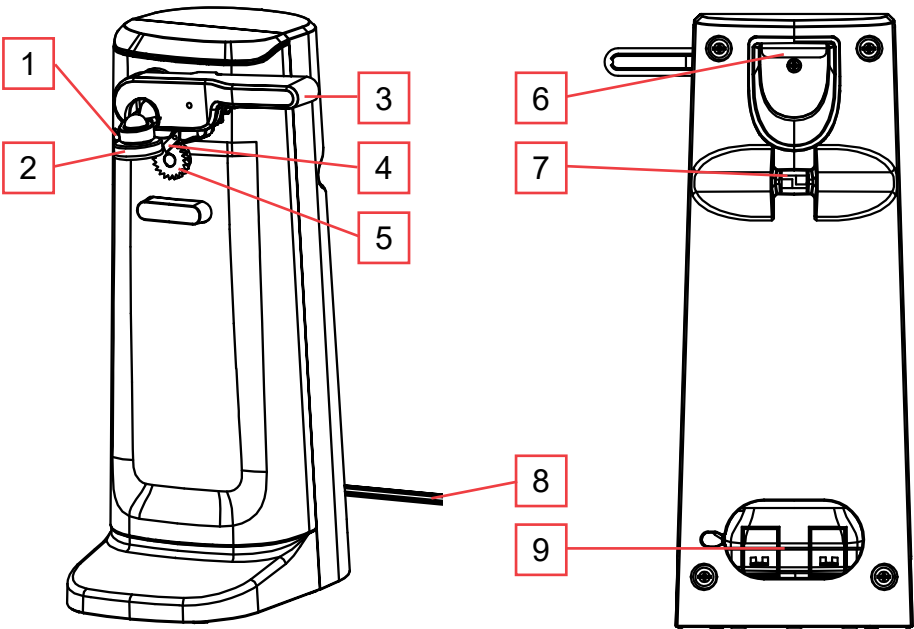
4. Cutting Blade

5. Drive Wheel
6. Bottle Cap Opener

7. Knife Blade Sharpener

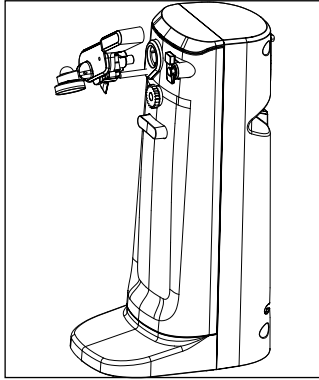
8. Power Cord

9. Power Cord Storage

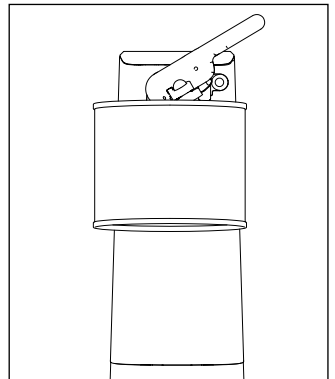
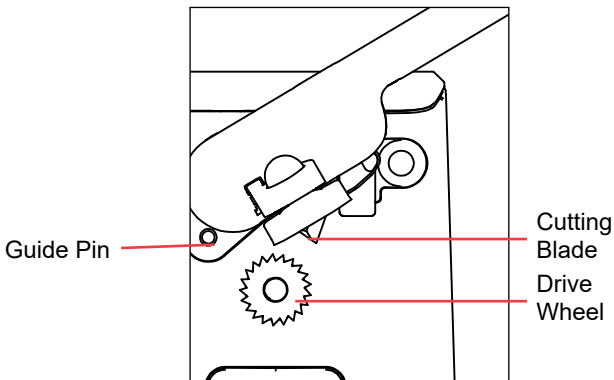


USING THE CAN OPENER

1. Remove all packaging materials. Do NOT remove the rating label on the back of the appliance.
2. Remove the Can Opener Unit and Cutting Lever from the packaging. The Cutting Lever needs to be attached before first use.
3. To attach the Cutting Lever to the Can Opener Unit, align the lever key tabs with the slots on the unit and press down to secure. See diagram below.



4. Plug the Can Opener into a power outlet.
5. Raise the Cutting Lever and move the can into place so the rim of the can is below the Guide Pin and on top of the Drive Wheel.



USING THE CAN OPENER

6. Lower the Cutting Lever into a horizontal position, the Magnetic Lid Holder will attach to the can lid.

NOTE: Make sure the Cutting Blade is inside the rim of the can and the can opener will start automatically.

NOTE: It is not necessary to hold the Cutting Lever down or hold the can while it is being opened. The motor will automatically stop when the can is open.

7. When the can has stopped moving, hold the opened can and lift the Cutting Lever to release the can.

WARNING: Avoid touching the cut edges of the can or lid, as they are sharp. Remove the lid from the Magnetic Lid Holder with care.

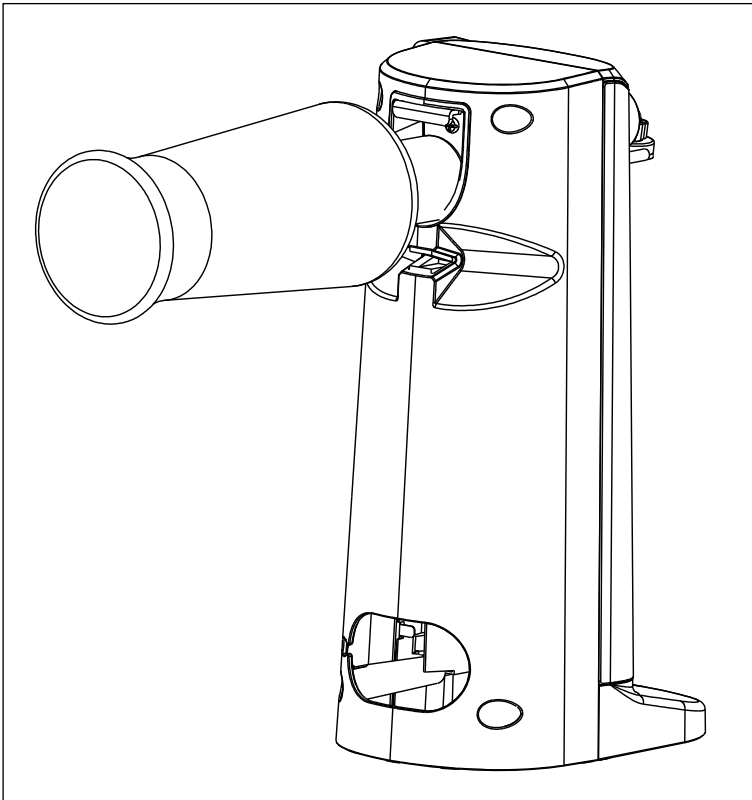
IMPORTANT NOTES & TIPS

- The can opener should not be used to open cans with a pull tab, peel-off foil seal, rolling key cans, rimless cans, or angled cornered cans.
- Cans should not be wider than 100mm and/or taller than 178mm. If a can weighs more than 500g, place your hand on top of the Can Opener to avoid overturning.
- No more than 5 cans should be opened continuously. Open a can at an interval of 15 seconds.
- If there is a dent, bump or heavy seam on the rim of the can, open the other end of the can.
- Clean and dry the blade carefully after use, as the blade is sharp.
- The can opener motor is permanently lubricated and requires no oiling.

USING THE BOTTLE OPENER

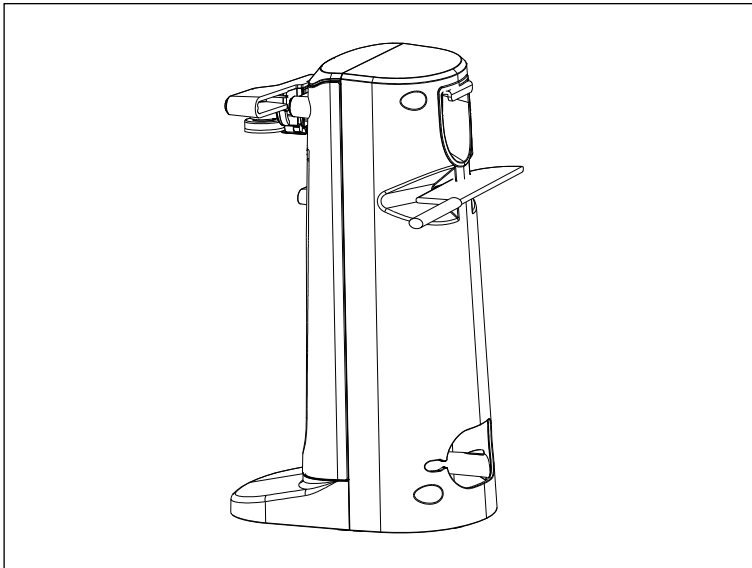
1. **IMPORTANT:** The Can Opener **SHOULD NOT** be plugged into a power outlet when opening bottles.
2. Unplug the power supply before using the Bottle Opener.
3. Holding the bottle, position the cap under the metal hook in the Metal Cap Bottle Opener. See diagram below.
4. Place one hand on the top of the Can Opener to avoid overturning and pull the bottle downwards with the other hand to remove the cap from the bottle.

NOTE: Only use the bottle opener with metal caps. DO not use for twist off caps or ring pulls.



USING THE KNIFE SHARPENER

1. **IMPORTANT:** The Can Opener **SHOULD NOT** be plugged into a power outlet when sharpening knives.
2. Unplug the power supply before using the Knife Sharpener.
3. Place the knife intended for sharpening in the Knife Blade Sharpener slot at the back of the unit. See diagram below.



4. To sharpen the entire length of the blade, carefully pull the knife backwards through the Knife Blade Sharpener and repeat until the knife has reached the required sharpness.

NOTES:

- Clean and dry knived before sharpening.
- Do not attempt to sharpen serrated blades, as this will smooth the edges.
- Do not attempt to sharpen scissors.
- Always sharpen knives with care to avoid injury.

CARE & CLEANING

- Before cleaning the Can Opener, unplug from the power outlet.
- To remove the Cutting Lever and Magnetic Lid Holder for easy cleaning, raise the Cutting Lever and pull out of the Can Opener housing.
- The Cutting Lever and Magnetic Lid Holder can be cleaned with a damp cloth and then dried thoroughly.
- Wipe the Can Opener unit and the area around the Drive Wheel with a damp cloth or sponge.
- To replace the Cutting Lever, align the tabs with the slots and push it into the Can Opener unit and press down on the Cutting Lever to secure in place.
- The power cord can be stored conveniently in the Power Cord Storage cavity in the back of the Can Opener.
- To avoid damaging the Can Opener, do not use abrasive cleaners or scouring pads.

TROUBLESHOOTING

PROBLEM	SUGGESTED SOLUTIONS
Can Opener does not work.	<ol style="list-style-type: none">1. Check that the appliance is plugged in.2. Check the Cutting Lever is fitted correctly.3. Check the Cutting Lever has been pushed down fully and the Cutting Blade has pierced the can.
Can will not open.	<ol style="list-style-type: none">1. Reposition the Cutting Blade.2. Check for bumps, dents or a thick seam in the rim of the can and open at the other end or start the cutter just beyond it.

TROUBLESHOOTING

PROBLEM	SUGGESTED SOLUTIONS
Can is not rotating.	<ol style="list-style-type: none">1. The can opener is only suitable for round steel cans with rolled edges.2. If there is a recess in the can lid, the Drive Wheel cannot engage.3. Aluminium cans will not attach to the Magnetic Lid Holder.
The bottle opener will not work.	<ol style="list-style-type: none">1. Do not use with screw off tops or ring pull bottles.
The knife sharpener will not work.	<ol style="list-style-type: none">1. Serrated knives are not suitable for sharpening.2. In order to sharpen the knife sufficiently, the sharpening action needs to be repeated several times.

REGISTER YOUR PRODUCT

By having your product registered on the Morphy Richards customer portal, your details can be accessed quickly in the event that there is an issue with your product. Make it quick and easy to get the help you need, if you ever need it.



WARRANTY

Please refer to the warranty card in the box for warranty information. For any troubleshooting advice, please contact the relative Customer Care Centre below.

Glen Dimplex Australia Pty Ltd
8 Lakeview Drive,
Scoresby 3179, Victoria
Australia
Ph: 1300 556 816

Glen Dimplex New Zealand Ltd
38 Harris Road, East Tamaki,
Auckland 2013
New Zealand
Ph: 0800 666 2824



Recycling: Do not dispose of electrical appliances as unsorted municipal waste. Use separate collection facilities. Contact your local government for information regarding the collection systems available. If electrical appliances are disposed of in landfills or dumps, hazardous substances can leak into the ground water, polluting the food chain and damaging health and wellbeing.

Expanded Polystyrene Disposal: The websites listed below can assist in the responsible disposal of EPS (Expanded Polystyrene) packaging products.

Australia: <https://recyclingnearyou.com.au/polystyrene> and/or <http://epsa.org.au>

New Zealand: <https://greenbusinesshq.com/epsrecycling> and/or
<https://www.plastics.org.nz/environment/recycling-disposal/eps-recycling>

morphy richards

Glen Dimplex Australia Pty Ltd
8 Lakeview Drive
Scoresby VIC 3179

Phone: 1300 556 816

Email: seasonal.support@glendimplex.com.au

Web: www.morphyrichards.com.au

© Glen Dimplex Australia. All rights reserved. Material contained in this publication may not be reproduced in whole or in part, without prior permission in writing of Glen Dimplex Australia.

MRCO5SS_IM_v2