

≡Mueller

Ultra-Juicer MU-100



Instruction Manual

Do Not Operate The Power Juicer Before Reading This Entire Manual.

FOR HOUSEHOLD USE ONLY

IMPORTANT SAFEGUARDS

READ THESE SAFEGUARDS CAREFULLY BEFORE USING THIS PRODUCT!

When using electrical appliances, basic safety precautions should always be followed including the following:

- Read all instructions.
- **NOT TO BE USED BY CHILDREN!** Keep out of the reach of children to avoid injury. This appliance is not a toy.
- Do not operate this or any appliance with a damaged cord or plug.
- Do not operate if appliance malfunctions, has been dropped or appears damaged in any manner. Never attempt home repairs. Only a qualified appliance technician should repair the appliance before re-use.
- To avoid electric shock or serious personal injury, do not use any attachments that were not recommended or supplied by the manufacturer.
- To protect against the risk of electrical shock or injury, never submerge power cord, plug, or main unit in water or any other liquids.
- Do not let power cord hang over the edge of table, counter, or come in direct contact with hot surfaces such as stoves.
- Before operating the juicer ensure that the Lid/ Feeding tube is properly attached, the Locking bar is in the vertical position, and the juicer is securely locked before powering on.
- Make sure the motor stops completely and the unit is unplugged from the electrical outlet before disassembling, assembling or cleaning.
- **Should juicer suddenly stop or develop excessive vibration or make an unusually loud noise, shut off and unplug unit immediately, wait for Stainless Steel blade to stop running, then disassemble, clean thoroughly and reassemble. Refer to the TROUBLESHOOTING section for more information.**
- To avoid the risk of personal injury, keep hands and utensils out of the juicer and away from its sharp blade during operation. Use the Pusher, not fingers or utensils, to feed the produce into the juicer.
- Never disengage the Locking bar during operation.
- The juicer blade is extremely sharp. Use extreme caution when handling.
- Should food become lodged in the Lid/ Feeding tube, and if moderate Pusher pressure will not dislodge it, turn the Power Switch off, allow the motor to stop completely, then unplug the cord, disassemble the juicer and remove the blocked food.

- To avoid personal injury, never assemble the unit without using all components in their proper sequence.
- The juicer will not run if the unit is not properly assembled. The motor has a built-in safety feature that will not allow the power to turn on unless the Locking Bar is locked in place.
- Do not use outdoors.
- Be sure to turn switch to OFF position after each use of your juicer. Make sure the motor stops completely before disassembling.
- Do not use the appliance if the Filter with blades is damaged.
- This appliance has a polarized plug (one blade is wider than the other). To reduce the risk of electric shock, this plug will fit in a polarized outlet only one way. If the plug does not fit fully in the outlet, reverse the plug. If it still does not fit, contact a qualified electrician. Do not modify or force the plug in any way.
- Do not operate without the pulp container in place.
- **To prevent overheating, do not leave the appliance switched on continuously for more than 3 minutes. After 3 minutes, switch off the appliance and allow it to cool down for 10 minutes before switching it on again.**

SAFETY FEATURES

Having safety in mind, we have added two important safety features: the Automatic Shut Off and the Locking Bar.

• Built-In Thermal Cut Off Switch / Automatic Shut Off

This feature automatically shuts off the motor in case the unit becomes jammed or overheated during the juicing process. Prior to shut down, you will most likely hear the juicer get louder. When the unit shuts off, simply unplug the cord from the outlet. Follow the Disassembly, Cleaning and Assembly process, then allow the unit to cool for 10 minutes. The unit will restart and you may resume the juicing process.

• The Locking Bar

The Locking Bar holds the juicer Lid/Pulp Guard in place and is connected to an auto shut-off switch. If the Locking Bar is not in its full upright and locked position, the juicer will not start. This is to prevent accidental contact with the spinning blade. If the machine is not locked, the motor will not engage and the blade will not spin.

SAVE THESE INSTRUCTIONS
FOR HOUSEHOLD USE ONLY

PARTS LIST



BEFORE FIRST USE

Ensure that power juicer motor is switched off and unplugged from the electrical outlet.

Disassemble the unit and wash all detachable parts with a soft cloth or sponge in warm, soapy water to remove any dust or other remnants from the manufacturing process.

Rinse the parts with clean water and dry.

! CAUTION! Take care to avoid injury from the sharp blades at the bottom of the Stainless steel centrifugal bowl.

Remove any dust from shipping by wiping the base with a damp cloth.

! IMPORTANT: Never place the motor housing in the dishwasher, nor immerse it in water. Always use a damp cloth to wipe it clean.

When all parts are thoroughly dry, assemble the unit.

Refer to the CLEANING YOUR JUICER section for more information about cleaning.

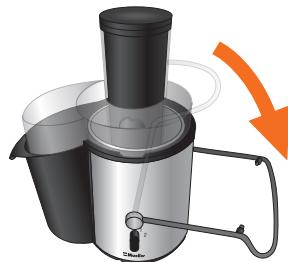
DISASSEMBLY

1



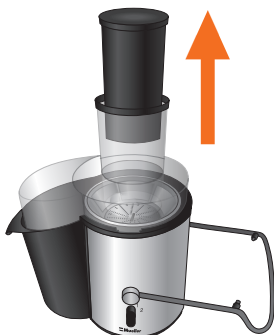
Place the juicer on a flat and dry surface. Ensure that the motor is switched off and unplugged from the electrical outlet.

2



Lower the Locking bar (1) into position as shown.

3



Slowly remove the Pusher (4) from the Lid/ Feeding tube (5).

4



Remove the Lid/ Feeding tube (5).

5



Remove the Filter with blades (6) from the Juice collector (7) by simply pulling up on the sides of the rim. Be careful not to touch the blades at the bottom of the filter.

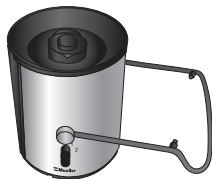
6



Remove the Juice collector (7) and the Pulp container (8) from the Main body (9).

ASSEMBLY

1



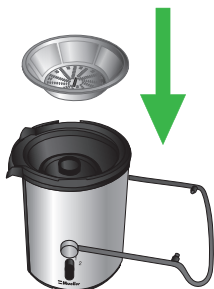
Place the Main body (9) on a flat and dry surface. Ensure that the power juicer is switched off and unplugged from the electrical outlet.

2



Place the Juice collector on top of the Main unit (9).

3



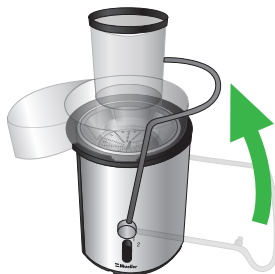
Place the Filter with blades (6) in the Juice collector (7). Push it down slowly and adjust it until it clicks. A clicking sound will signal it has been correctly assembled.

4



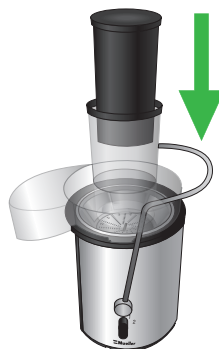
Carefully place the Lid/ Feeding tube (5) onto the top of the Juice collector (7). Ensure that the clips of Lid/ Feeding tube fit into the Juice collector slots.

5



Raise the Locking bar (1) and firmly lock it in vertical position.

6



Slide down the Pusher (4) into the Lid/ Feeding tube (5).

7



Insert the Pulp container (8) under the Lid/ Feeding tube (5), pushing it to the end, to the Main unit (9).

USING THE JUICER

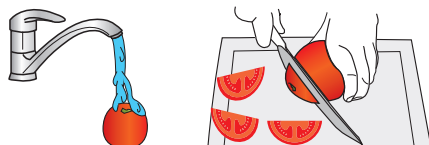
IMPORTANT: The Juicer will only function if all the parts are assembled properly and if the Lid/ Feeding tube is safely locked with the Locking bar.

1. Make sure the Juicer is properly assembled (Refer to ASSEMBLY section) and plug it into a power outlet.

2. Place the Juice jug under the Spout.

3. Wash the fruit and/or vegetable you want to juice and cut them into pieces that fit into the Lid/ Feeding tube (Refer to USEFUL TIPS section for more information).

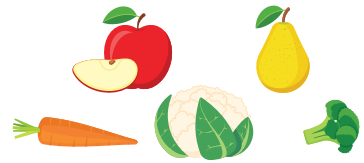
4. To switch ON the Juicer, turn the Power switch with speed control to setting 1 (low speed) or 2 (high speed).



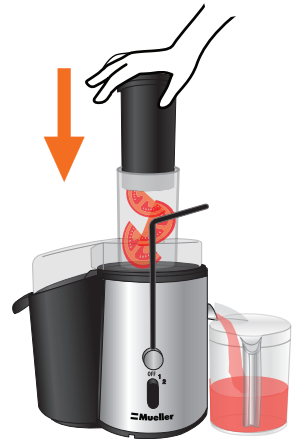
Setting 1 is suitable for processing soft fruits and vegetables such as watermelons, peaches, grapes, raspberries, tomatoes, and cucumbers.



Setting 2 is more suitable for processing hard fruits and vegetables such as apples, pears, carrots, cauliflower, and broccoli.



5. Lift the Pusher out of the Lid/ Feeding tube, put the pre-cut pieces into the opening, and use the Pusher to gently press them down towards the Filter with blades. The juice will flow into the Juice jug, and the pulp will accumulate in the Pulp container.



Note: Do not put too much pressure on the Pusher, as this could affect the juice quality, and it could even cause the Filter to come to a halt.

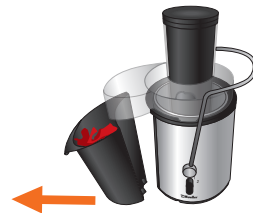
IMPORTANT: Do not leave the appliance switched on continuously for more than 3 minutes. After 3 minutes, switch off the appliance and allow it to cool down for 10 minutes before switching it on again.



6. When finished juicing, turn the Power switch to OFF position to stop the motor and wait for the blades to stop rotating.



Note: If the Pulp container needs emptying while juicing, switch off the appliance, carefully remove the container, empty it, and then reassemble it before you continue juicing.



CAUTION! Never insert your fingers or an object into the Lid/ Feeding tube.



CLEANING YOUR JUICER

For easiest cleanup, we recommend you rinse/clean your Ultra Juicer immediately after juicing. This will help prevent fruit/vegetable fibers from hardening on the components, making it more difficult to clean.

CLEANING PROCESS

- Turn off the Power Switch and wait until the motor completely stops.
- With dry hands, unplug the cord from electrical outlet.
- Disassemble the machine.
- Wipe the Main body with a soft damp cloth or sponge. Do not submerge Main body in water. Do not spray the Main body with water or any other liquid. Main body is not dishwasher safe. **IMPORTANT:** Do not use abrasive sponges, cloths, or cleansers as these can damage the finish.
- Clean all other parts in warm, soapy water. A mild detergent is recommended. Rinse well and dry thoroughly. **PARTS ARE NOT DISWASHER SAFE.**
- To clean the Filter with blades and the Juice collector, hold them under warm running water. Use a the included Cleaning brush to gently clean pulp from the Filter with blades. Rinse the Juice collector and the Filter with blades from the outside under running water. If your sink has a spray hose attachment, you can use it to spray these two parts before placing them in the dishwasher. This is especially effective for loosening fiber stuck in the filter/ blade.
- Dry components thoroughly, then assemble the machine and turn the power on to spin out any excess water.
- Make sure unit and parts are completely dry, then store in a cool, dry place.

USEFUL TIPS

- If you line the fruit Pulp container with the plastic bag before using the appliance, it will be easier to clean the appliance after use.
- Try and use fresh fruits or vegetables as they contain the most juice. Here are some ideal ingredients: pineapple, apples, cucumbers, celery, carrots, spinach, melons, tomatoes, different varieties of citrus fruit, different varieties of apples. Experiment with different combinations to find your favorite juice.
- Leafy green vegetables such as cabbage and spinach can be juiced. Simply roll the leaves into cylinders of appropriate size before feeding them into the Lid/ Feeding tube.
- Harder more fibrous fruit such as bananas, mangoes, papayas, and avocados are not well-suited to juicing as the result is often of a puree-like, rather than juice.
- All types of juice should be consumed right after juicing, as fresh juice quickly loses important nutrients when exposed to the air. Also, the taste can be different.
- Pure apple juice turns brown quickly when exposed to the air. To prevent discoloring, it is best to serve the apple juice immediate after juicing or add a little lemon juice.
- Remember that fruit pulp can be used alternatively in cakes, vegetable lasagna, muffins etc.
- Do not use nuts, spices, or meat products in the juicer. It is not a blender or food processor. You can damage it, break it, or hurt yourself.
- This is not a smoothie maker. The Ultra Juicer will not make smoothies, only fresh juice for smoothies. Add all smoothie ingredients separately in a blender.
- You can put the whole fruit, peeled or unpeeled, as long as it fits in the Lid/ Feeding tube and does not have pits, tough skin, or stems. We recommend that you maintain your personal produce preferences in their “fresh state” as juice, rather than a less nutrient-rich “cooked” form.
- Before juicing any produce, it is important to wash it thoroughly to remove all contaminants, including soil and pesticides.
- Fruit and vegetable pulp can be frozen. It is best if it is in an airtight container or a freezer bag. Discard after one month. We recommend that you use a separate container or bag for each pulp.
- Using regularly the MU-100 Ultra Juicer makes it easier to consume your fruits and vegetables, keep your energy level high, and live a healthier lifestyle.

EQUIVALENTS

Tomatoes	4 medium firm tomatoes = 2 cups of juice 4 medium firm tomatoes = 1 cup of pulp
Carrots	5 large carrots = 1 cup juice 5 large carrots = 1 cup pulp
Cucumber	1 large cucumber = 1 cup juice
Zucchini & Squash	5 small zucchini = approx. 1 cup juice 5 small zucchini = approx. 1/2 cup pulp
Celery	4 celery stalks = 3/4 cups juice
Pineapple	2 medium pineapples = approx. 2 cups juice 2 medium pineapples = 2 1/2 cups pulp
Potatoes	8 potatoes = approx. 2 cups pulp
Apples	6 medium apples = 2 cups juice 6 medium apples = 1 1/2 cups pulp
Oranges	5 medium oranges = 2 cups juice 5 medium oranges = 1 1/2 cups pulp
Mangos	6 mangos = 2 1/2 cups juice 6 mangos = 2 cups pulp
Strawberries	1 qt. approx. 30 strawberries = 2 cups juice 1 qt. approx. 30 strawberries = 1/3 cups pulp
Papaya	1 medium papaya = approx. 1/2 cup juice 1 medium papaya = 1/3 cup pulp
Raspberry	1/2 pint raspberries = approx. 1/2 cup juice 1/2 pint raspberries = approx. 1/4 cup pulp
Pears	6 medium pears = 2 cups juice 6 medium pears = 1 1/2 cups pulp
Passion Fruit	4 passion fruits = 1/4 cup juice

TROUBLESHOOTING

Problem	Possible Reasons and Solution
The motor does not run after being switched on.	<ul style="list-style-type: none"> • Check to see if unit is plugged into a working 110V electrical outlet and that it is ON. • Check that the Locking bar is locked in place properly. • Check if all parts are assembled properly. • Check if there is any residue left in the Filter with blades. • The unit has a built-in safety feature that will not let the motor turn on if not assembled properly. The juicer also has a built-in Thermal Cut Off Safety Switch. If the machine was running, then shut down due to the accidental overheating, make sure you allow the machine to cool for 10 minutes before using it again.
The motor is running with a loud noise and excessive vibration.	<ul style="list-style-type: none"> • Check that all parts are assembled properly and in the correct position. • Juicing overripe fruit may result in too much pulp and will clog the Filter. Turn machine off and clean the Filter.
The motor overheats causing the power to automatically shut off.	<ul style="list-style-type: none"> • You may have applied too much pressure with the Pusher while processing, causing the motor to accidentally overheat. This activates the built-in Thermal Cut Off Switch. The motor will temporarily stop working for approximately 10 minutes to cool down. See additional information on page 2. • The motor needs to warm up for 5–10 seconds before first use. • The fruits and vegetables may be soft or overripe. • There may be too much pulp in the Filter with blades. Turn the machine off and clean the Filter with blades.
My Power Juicer is clogged	<p>The fruit you are using might be overripe.</p> <p>There might be too much pulp in the Filter. Turn the machine off, unplug the AC power cord, and clean the Filter.</p> <p>Fruits such as avocados or bananas cannot be juiced in the Power Juicer. The Spout may be blocked by a piece of pulp that may have passed through the Filter causing the juice to collect in the Juice collector and overflow.</p> <p>Turn the machine off, unplug the AC power cord, wait for the blade to stop spinning, and inspect the Spout. Clear the blockage so the juice can flow freely.</p>

TECHNICAL DETAILS

- Rated Power: 700W
- Input Voltage: 110V
- Frequency: 60Hz
- Strong motor – Speed up to 18000 rpm/min
- Low speed – High Speed
- Overheat switch off mechanism
- Anti-Slip silicon Feet
- Cord length 120 cm /47.3 inch
- Stainless steel Blades
- Wide Mouth 3 Inch (76 mm) Lid/ Feeding tube
- Pulp Container volume 2 liters
- Juice Jug volume 1 liter





1-Year Limited Warranty

This product is warranted to be free from defects in material and workmanship under normal use and service for one year from the date of the original purchase with the receipt. The manufacturer's obligation shall be limited to repairing or replacing any part of the product that is defective. Such warranty shall not apply to damages resulting from accidents, abuse, or misuse.

🏠 37 East 18th, Floor 7, New York,
NY 10003, USA

☎ Telephone: (888) 632-9981

✉ E-mail: support@muellerdirect.com

🌐 Web: www.muellerdirect.com
