



Kwumsy devoted to innovate technology makes life better

Service Mail

service-amazon@kwumsy.com

User Manual

KWUMSY Laptop Screen Extender S2



Tips:

The screen extender requires both Power & Signal to work properly

1. Please make sure your laptop port is full featured Type-C or Thunderbolt 3.0/4.0; and Type-C to Type-C cable correctly connected to extender Type-C port for 1 cable Connection
2. For Non Full Featured Type-C port which could not provide power and signal at the same time, please connect extra HDMI to Type-C cable to provide signal to the screen extender
3. To make both screens of laptop screen extender work, there should be 2 way HDMI signal separately provided to each screen. Please make sure your laptop is capable of 2 way HDMI signal.
(Apple Macbook M1, M2 does not support 2 way HDMI)
4. Use 65W or above adapter and connect to Type-C port of screen extender if you want to PD charge your laptop from extender. (HDMI port is for signal Only. Adapter not provided)

Product Introduction

S2 laptop screen extender is a multi-function plug and play portable monitor for laptop which is foldable and extendable. The laptop screen extender is no driver needed and compatible with Macbook, Windows, Chromebook, Linux, Switch, Playstation, Xbox and smart phones.

Power and signal are required individually to work both screens of the laptop screen extender. "No Signal" will show on the screen of the extender and screen will turn off if there is only power but no signal delivered to the extender. So there should be 2 way HDMI signal export available from the laptop.

Full featured USB-C port is capable of power and signal at the same time which could work 1 screen properly connected with provided L shape USB-C to USB-C cable to Type-C port of laptop screen extender.

Non full featured USB-C port is capable of power only, which needs extra HDMI to Type-C connection to laptop screen extender for signal to work properly. (Non full featured Type-C port, needs 2 cables to work 1 screen).

S2 laptop screen extender is capable of PD charging from screen extender to laptop. 65W or above adapter is needed for PD charging. Adapter is not provided. Power should connect to Type-C port of screen extender.

S2 laptop screen extender screens are 0-180° rotatable. You can change settings by short press and roll the roller at the top of the screen extender.

S2 laptop screen extender is expandable and clamp to laptop screen to use. The laptop screen extender fits laptop width from 11.8 to 15.8 inches (fits most laptop size from 13.3 to 17 inch).

Contents

Product Attributes

1, Product Introduction -----	1
2, Packing List -----	1
3, Datasheet -----	1

Installation and Storage

1, Expand the monitor -----	2
2, Stretch the frame -----	2
3, Adjust the stand -----	2
4, Open Sequence -----	3
5, Close Sequence -----	3
Key Definitions -----	3

Connection Mode

1, How to Connect S2 to Laptop -----	4
2, Devie Power Supply Connection Mode -----	4

Audio Settings

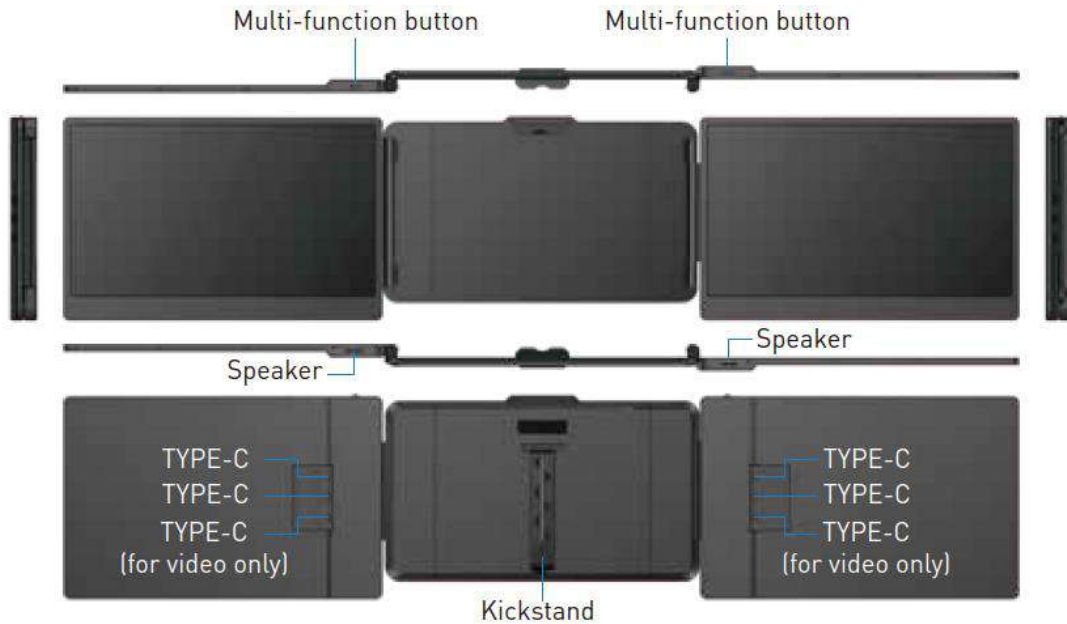
1, Change Sound Settings of Windows 10/11 -----	5
2, Change Sound Settings of MAC or PC -----	6

Display Mode

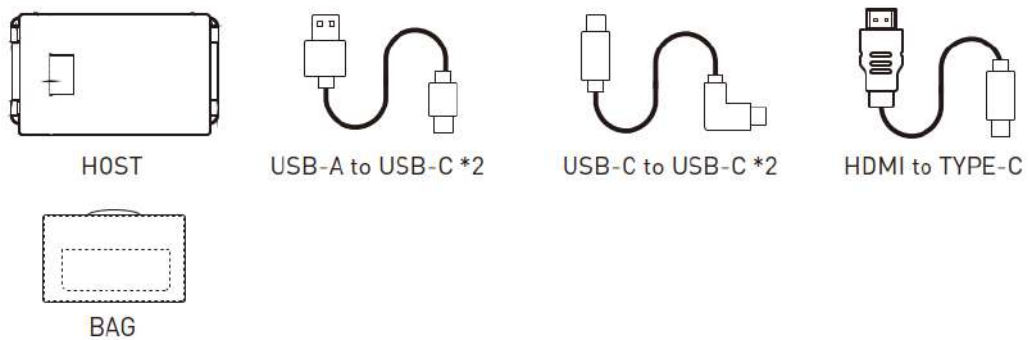
1, Windows 10/11 Display Settings -----	7
2, MacOS 13 Ventura Display Settings -----	8
Troubleshooting -----	9

Product Attributes

1, Product Introduction



2, Packing List

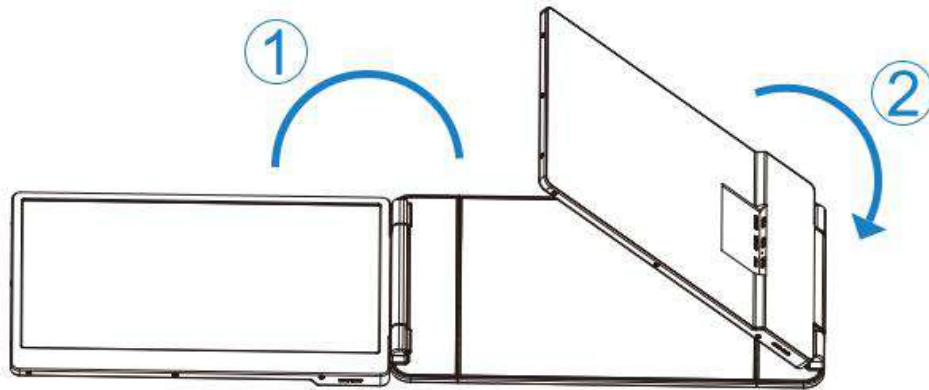


3, Datasheet

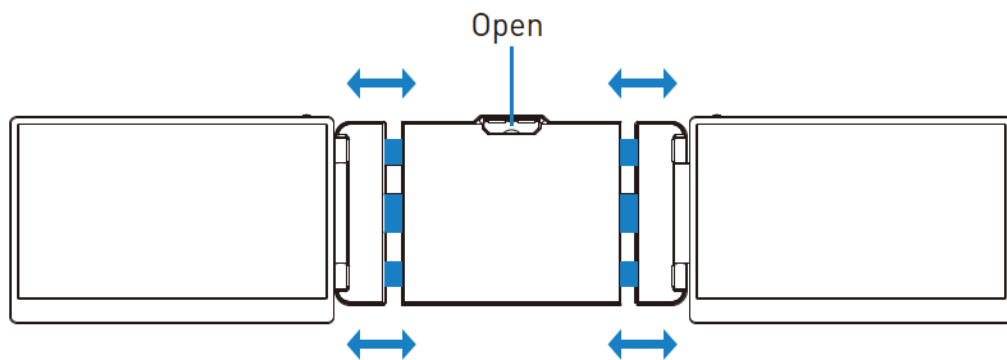
Weight:	1.62 Kg	Screen Size:	14 Inches
Aspect Ratio:	16:9	Panel Type:	IPS Wide Viewing Angle
Size:	353x207x38.7mm	Average Brightness:	300CD/M ²
Refresh Rate:	60Hz	Type-C Input:	5V-20V / 5A Max
Resolution:	1920x1080 P	Type-C Output:	5V-20V / 4.25A Max
Speakers:	2	Ports:	Type-C x3

Installation and Storage

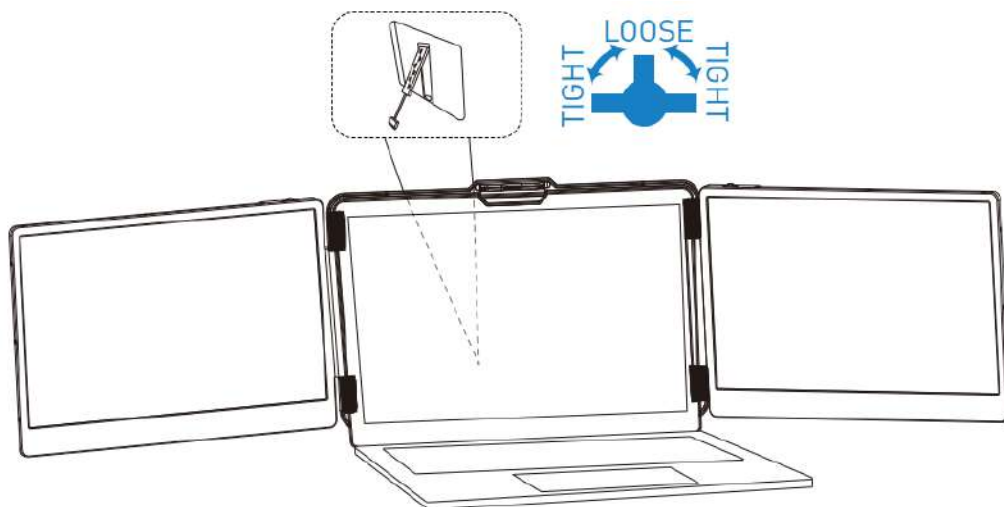
1, Expand the monitor



2, Stretch the frame

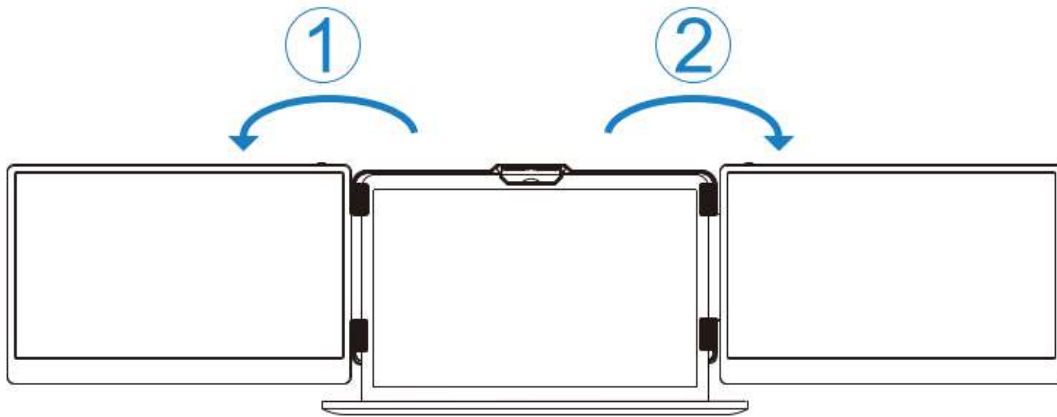


3, Adjust the stand

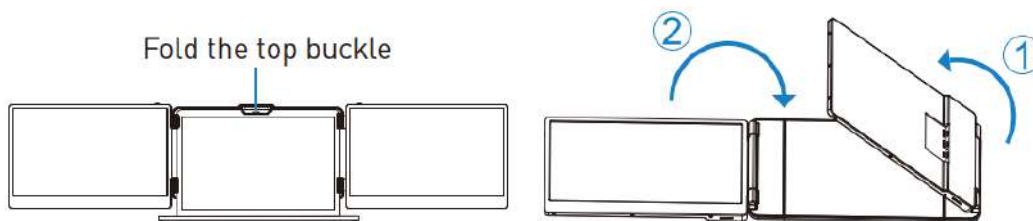


Installation and Storage

4, Open Sequence



5, Close Sequence

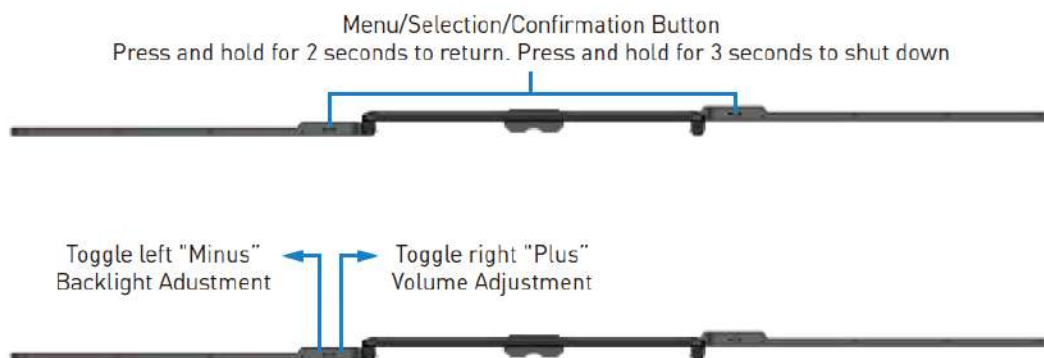


Note: Please follow the sequence of open and close to avoid damage of the screen extender



When folding the screens, pull the bracket out to the appropriate position, and fix the screen in the silicone of the bracket. Otherwise, forcibly closing will damage the screen.

Key Definitaion:

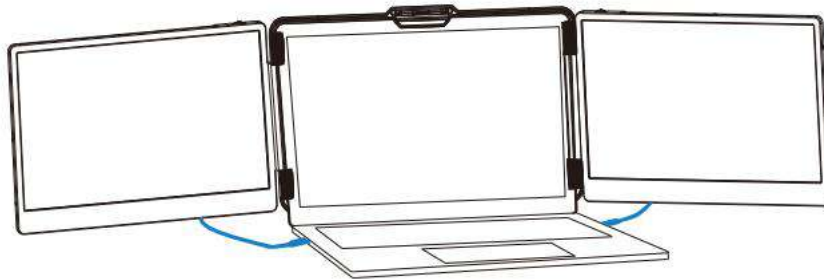


How to Connect

1, Connect S2 to Laptop

Full Featured Type-C Connection (1 Cable Connection):

If there are 2 full featured Type-C ports on your laptop, connect to Type-C port of each screen extender with provided L shape Type-C to Type-C Cables.

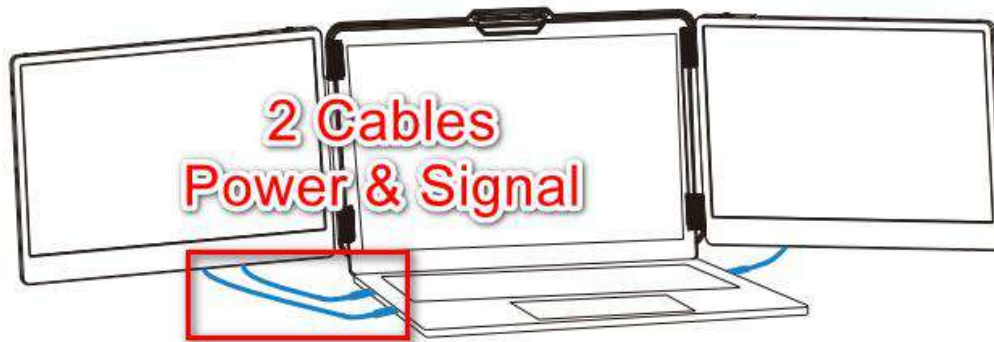


Non Full Featured Type-C Connection (2 Cables Connection)

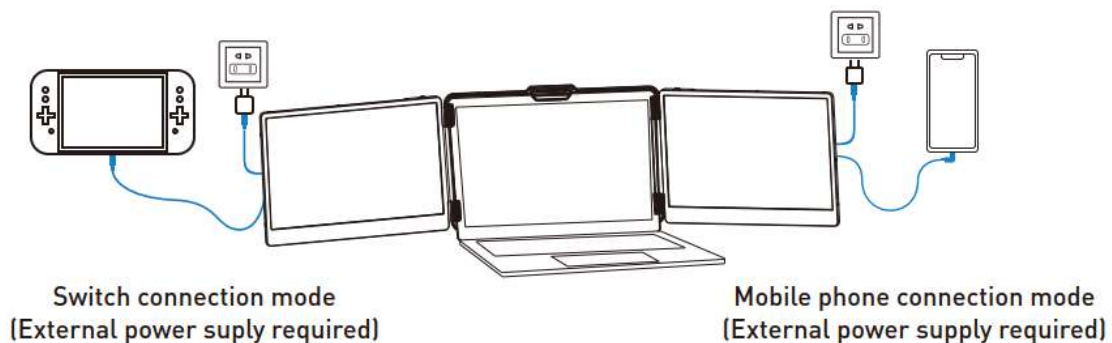
For non full featured Type-C port which could not provide power and signal at the same time, extra cable to provide signal is needed.

1 USB-A to Type-C connect laptop to screen extender for Power &

1 HDMI to Type-C connect laptop to screen extender for Signal



2, Connect S2 with Mobile Phone or Other Devices



Audio Settings

1, Change Sound Settings of Windows 10/11

1,1 Right click the loudspeaker icon at the bottom right



1,2 Select "Switch on sound" in pop-up interface

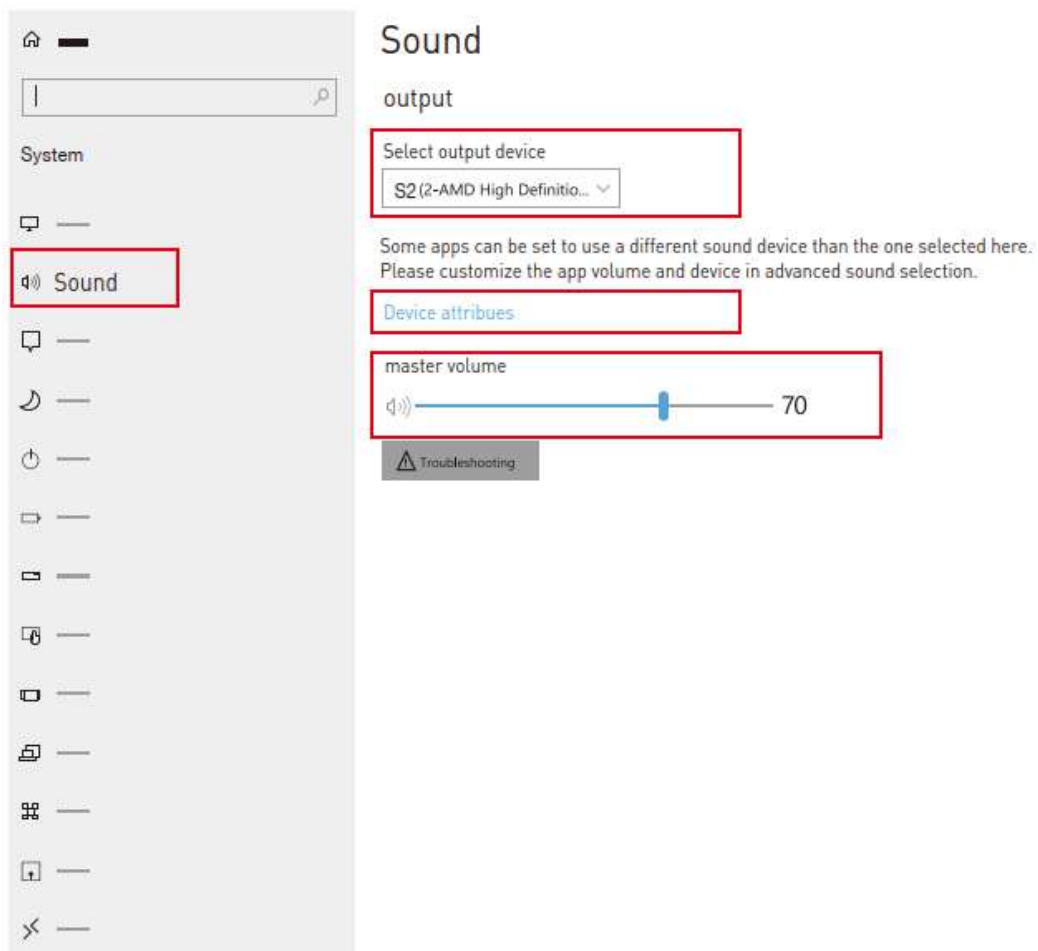
1,3 Left click "turn on sound settings" in pop-up interface

Here users can set about sound

1, Master Volume

2, Select output device: (S2 / Speaker)

3, Device attributes



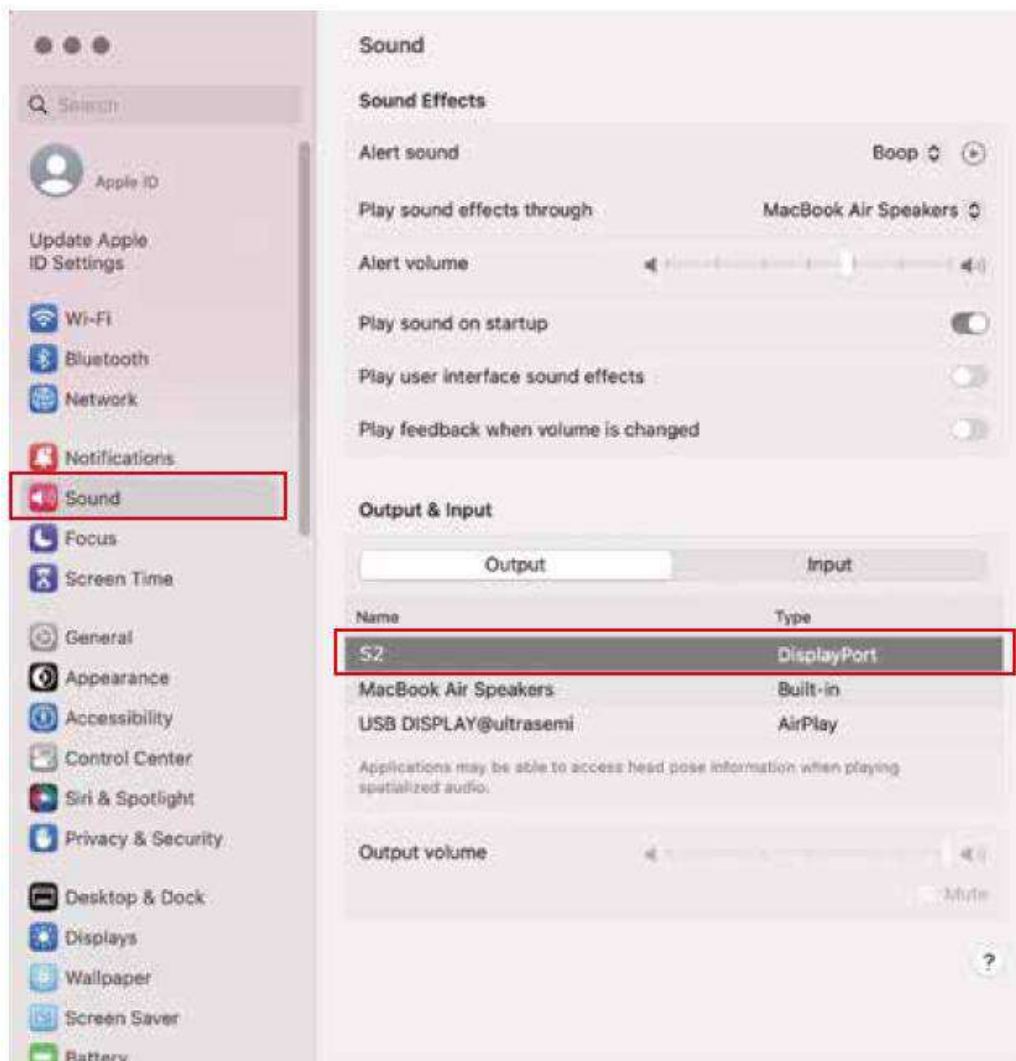
Audio Settings

2. Change sound Settings of MacOS PC

2.1 Choose Apple menu > System Settings



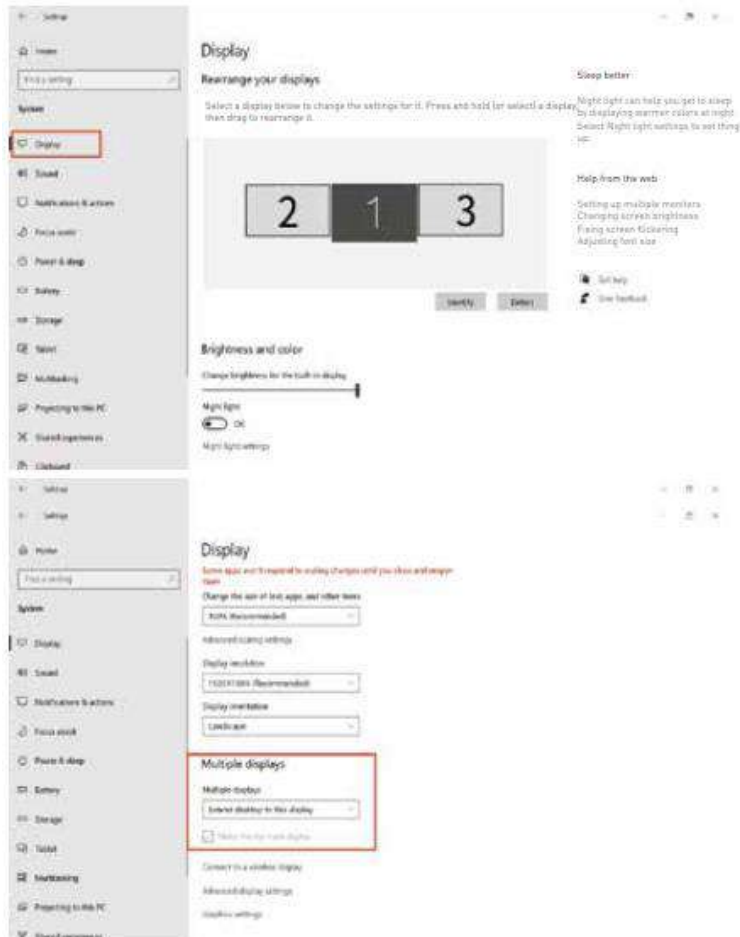
2.2 Click "Output", then select the device you want to use for the list of sound output devices: (S2 / Speaker)



Display Mode

1, Windows 10/11 Display Settings

1,1 Right click a blank area of the desktop. Select “ Display Settings” from the pop-up interface. Left click “Display Settings” to open the settings interface show as below:



1,2 Under the “ Rearrange displays” section, drag and drop each display to rearrange them according to their physical layout of your desktop. Scroll down to the bottom of the page to further configure the display for extended or mirrored mode.

Display Mode

2, MacOS 13 Ventura Display Settings

2.1 Enter the "System Preferences" Menu



2.2 Configure your monitor

In this menu, you can set the resolution and mirror/extend the display you want



2.3 Arrange Displays

To rearrange the displays, drag them to the desired position.

To mirror display, hold Option key while dragging them on top of each other.

To relocate the menu bar, drag it to a different display.



Troubleshooting

Error	Possible Cause	Solution
Only 1 Screen Works, the other screen “No Signal” and turn off	No signal provided to the other screen	Connect laptop HDMI port to screen extender with extra HDMI to Type-C cable to provide signal
Type-C cable connected, but “No Signal” and screen turn off	Type-C port of laptop is not full featured	Try at other full featured Type-C port or connect extender with extra HDMI to Type-C cable to provide signal
Laptop screen extender can not turn on	No power provided to laptop screen extender	Try other laptop port or power screen extender with adapter
Laptop screen extender flickers or insufficient brightness	Power to screen extender not stable or voltage not enough	Try other laptop port or power screen extender with adapter
The screen extender slides off	Top buckle not clamp to laptop screen	Detach laptop screen extender, flip up top buckle, install screen extender again and make sure top buckle clamp to laptop screen

End