



WINBOT **W2** OMNI

Instruction Manual

Important Safety Instructions

When using an electrical appliance, basic precautions should always be followed, including the following:

READ ALL INSTRUCTIONS BEFORE USING THIS APPLIANCE. SAVE THESE INSTRUCTIONS

1. This appliance can be used by persons with reduced physical, sensory or mental capabilities or lack of experience and knowledge if they have been given supervision or instruction concerning use of the appliance in a safe way and understand the hazards involved. Children shall not play with the appliance. The appliance is not to be used if it has been dropped, if there are visible signs of damage or if it is leaking. Keep the appliance out of reach of children when it is energized.
2. Do not use and charge the Appliance in extremely hot or cold environments (below 0°C/32°F or above 40°C/104°F, above 85% humidity), or it may affect battery life span.
3. The Appliance can be used to clean exterior windows if it is properly tethered to a safe position with the Carabiner, winds are calm, and it is not raining or snowing.
4. Before use, please use the Carabiner to lock the safety tether to a strong indoor railing, and make sure WINBOT is securely attached to it.
5. Do not leave the Appliance unattended when using it. To prevent bodily injury or property damage caused by accidental falling of the Appliance, please make sure there are no people, animals, or valuable, fragile objects under the working area of WINBOT.
6. Do not use the Appliance in whole gale storms and force-10 winds, or in areas where the altitude exceeds 2000 meters (6562 feet).
7. Do not leave the Appliance unattended when it is plugged in.
8. For household use ONLY (including exterior window). Do not use the Appliance in commercial or industrial environments.
9. Do not use on broken or uneven glass, such as glass with static cling stickers, advertising posters, or raised patterns, so as to prevent glass breaking or Appliance's falling. Do not use on surfaces with gaps, such as a piece of glass with gaps or holes, or two pieces of adjacent, frameless glass with a gap between them, so as to prevent the Appliance from falling due to poor attachment.

10. Only use accessories recommended or supplied by the manufacturer. Only use the Power Adapter supplied by the manufacturer.
11. Please make sure your power supply voltage matches the power voltage marked on the Power Adapter.
12. Do not use the Appliance on a framed glass with a frame smaller than 5 mm (0.2 in).
13. Do not use on glass less than 3 mm (0.12 in) thick or mirrors less than 4 mm (0.16 in) thick.
14. Do not use on glass or mirrors with a handle height of 70~105 mm (2.76~ 4.13 in).
15. Do not use the Appliance on greasy windows.
16. When used in high humidity environment, the cleaning performance will be affected.
17. Store the Appliance away from heat and flammable materials.
18. In rainy weather, do not use the Appliance on the exterior window to avoid the risk of Appliance's damage or falling.
19. Do not use the Appliance if it does not firmly attach to the glass or has visible signs of damage.
20. To reduce the risk of electrical shock, do not put the Appliance in water or other liquid. Do not place or store Appliance where it can fall or be pulled into a tub or sink.
21. Do not touch power plug with wet hands.
22. When charging the Appliance, do not place it on other electrical appliances and keep it away from fire and liquid.
23. Take care not to damage the power cord. Do not pull on or carry the Appliance by the power cord, use the power cord as a handle, close a window on the power cord, or put heavy weights on the power cord. Keep power cord away from hot surfaces.
24. Do not use with a damaged power cord or receptacle. Do not use the Appliance if it is not working properly, has been dropped, damaged, or come in contact with water. It must be repaired by the manufacturer or its service agent in order to avoid a hazard.
25. If the supply cord is damaged, it must be replaced by the manufacturer or its service agent in order to avoid a hazard.
26. The plug must be removed from the receptacle before cleaning or maintaining the Appliance. Do not unplug the Power Adapter by pulling on the power cord.
27. The Safety Battery must be replaced by the manufacturer or its service agent in order to avoid a hazard.
28. The Safety Battery must be removed and discarded according to local laws and

regulations before disposal of the Appliance.







29. The Appliance must be disconnected from the receptacle before removing the battery for disposal of the Appliance.
30. Please dispose of used batteries according to local laws and regulations.
31. Do not incinerate the Appliance even if it is severely damaged. The battery can explode in a fire.
32. The Appliance must be used in accordance with the directions in this Instruction Manual. The company cannot be held liable or responsible for any damages or injuries caused by improper use.
- 33. WARNING:** For the purposes of recharging the battery, only use the detachable supply unit GM65-240275-2D provided with this Appliance.
34. The robot contains batteries that are only replaceable by skilled persons.
35. The plug and the Power Adapter must be used indoor.
36. If the vacuum glass, which WINBOT is working on, is leaking, remove WINBOT immediately after cleaning is completed.
37. Before cleaning, please observe the area to attach WINBOT for any small particles. If there

are any, please remove them or switch to a particle-free area to avoid scratching the glass.

38. Clean the Mopping Pad in time and make sure that any small particles on it are completely removed to avoid scratching the glass.

To satisfy RF exposure requirements, a separation distance of 20 cm or more should be maintained between this device and persons during device operation.

To ensure compliance, operations at closer than this distance is not recommended. The antenna used for this transmitter must not be co-located in conjunction with any other antenna or transmitter.

	Class II
	Short-circuit-proof safety isolating transformer
	Switch mode power supply
	For indoor use only
	Direct current
	Alternating current

For EU Countries

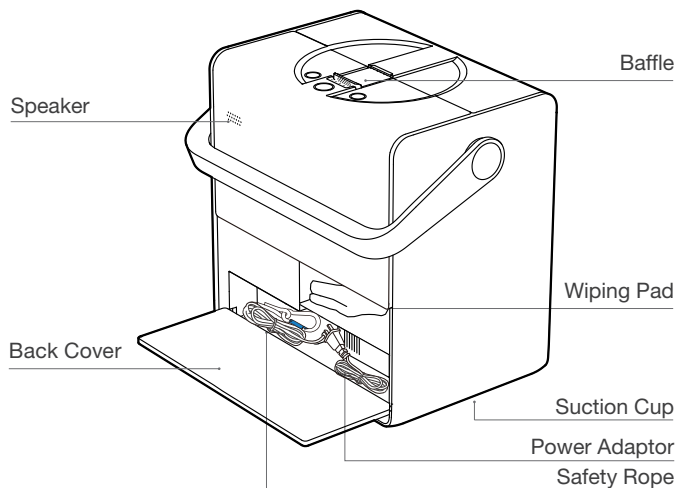
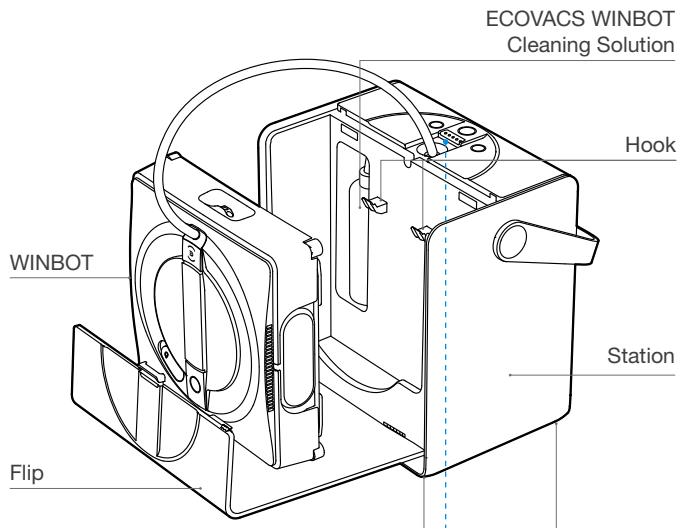
For EU Declaration of Conformity information, visit
<https://www.ecovacs.com/global/compliance>



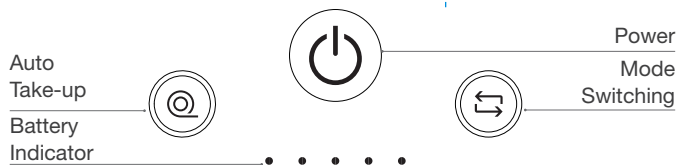
Correct Disposal of this Product

This marking indicates that this product should not be disposed of with other household waste throughout the EU. To prevent possible harm to the environment or human health from uncontrolled waste disposal, recycle it responsibly to promote the sustainable reuse of material resources. To recycle your used device, please use the return and collection systems or contact the retailer where the product was purchased. They can safely recycle this product.

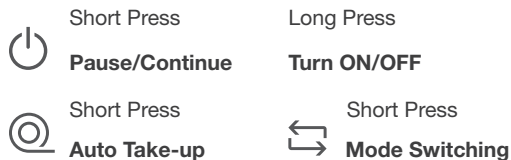
Product Diagram



Buttons



Buttons

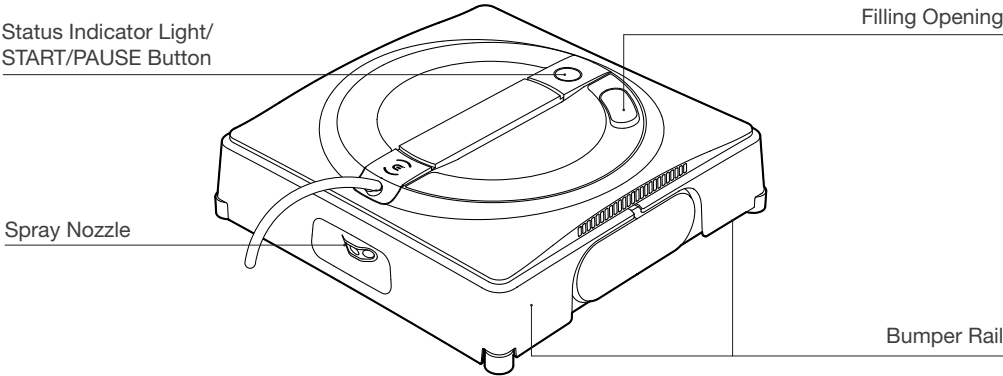


Note: Figures and illustrations are for reference only and may differ from actual product appearance.
Product design and specifications are subject to changes without notice.

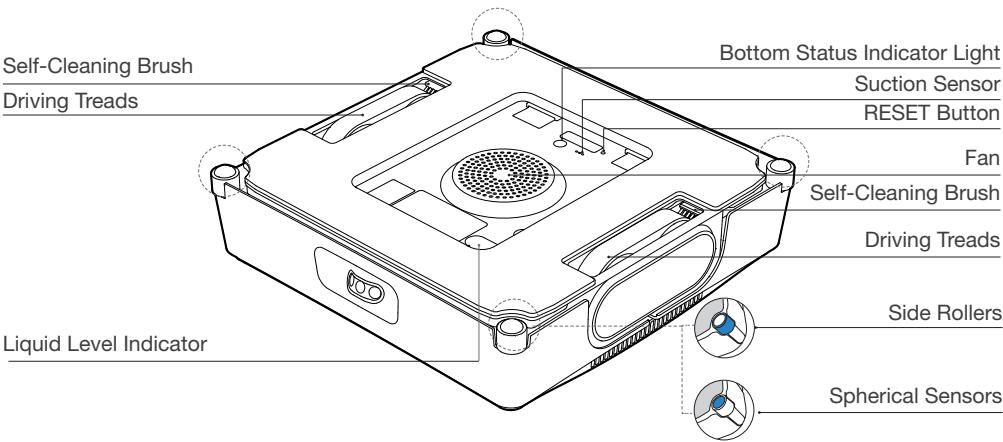
When WINBOT is working, long press to make it return to Initial Spot; press and hold ≥ 2 seconds and short press at the same time to release the Suction Cup

Product Diagram

WINBOT

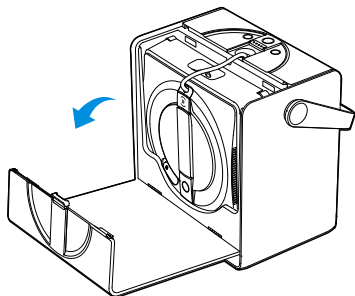


Bottom View

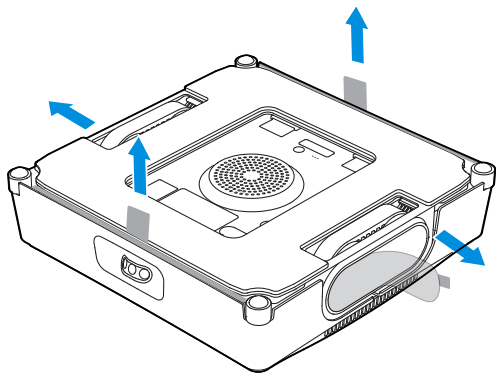


Quick Start

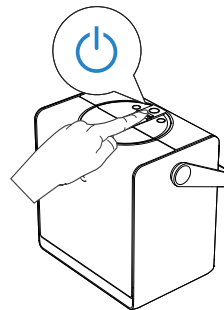
1. Open the Flip as shown in the picture.



2. Take WINBOT out and remove all protective materials.

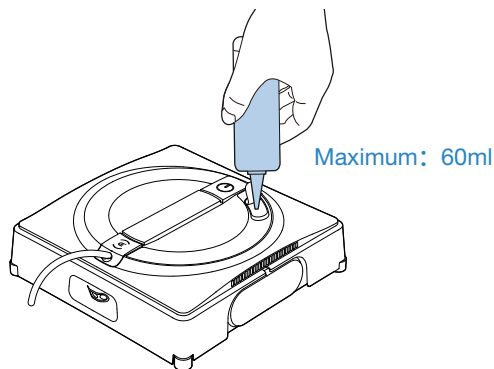


3. Long press Power button for 2 seconds to turn on Station and WINBOT.



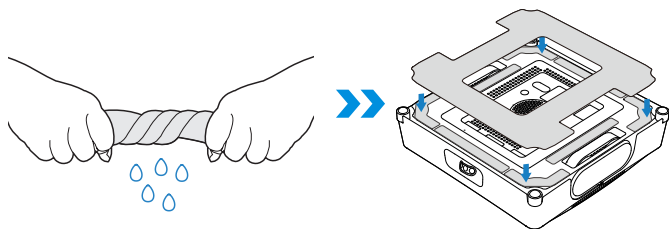
*The initial charge can sustain WINBOT for approximately 40 minutes of operation in the default mode.

4. Add ECOVACS WINBOT cleaning solution to the Water Tank.

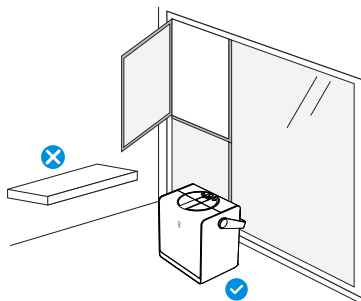


*Do not add too much cleaning solution to overflow the Water Tank.
*Do not use cleaning solution from other manufacturers.

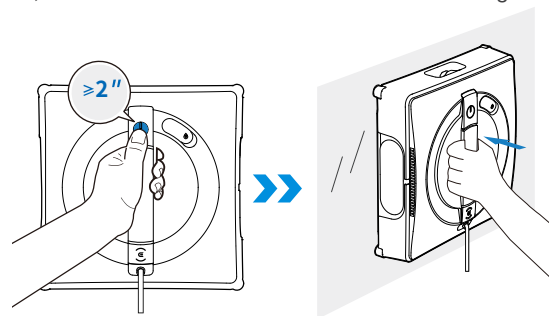
5. Wet and wring out the Wiping Pad and place it flat on the velcro at the bottom of WINBOT. Pay attention to align the narrow and wide side accordingly.



6. Make sure to place Station on a flat, seamless surface.

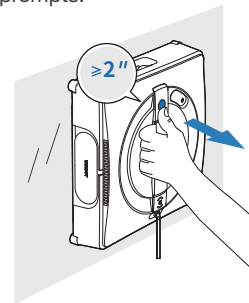


7. Long press START button for 2 seconds to start the fan. Place the bottom side of WINBOT (the side with Wiping Pad) against the window; WINBOT will auto-attach itself and start cleaning.



*Before cleaning, please observe the area to attach WINBOT for any small particles. If there are any, please remove them or switch to a particle-free area to avoid scratching the glass.
*Clean the Wiping Pad in time and make sure that any small particles on it are completely removed to avoid scratching the glass.

8. When cleaning is completed, WINBOT automatically returns to the Initial Spot and waits to be removed. At this point, long press START button for 2 seconds to stop the fan. Then, take WINBOT off according to voice prompts.



*If the vacuum glass, which WINBOT is working on, is leaking, remove WINBOT immediately after cleaning is completed.

Technical Specifications

Model	WG821-11		
Rated Input	24V=== 4A	Rated Power	126W
Power Adaptor	GM65-240275-2D or GM65-240275-3D		
Input	100-240V~ 50-60Hz 2A	Output	24V === 2.75A
Station Dimensions (mm)		312*215*327	
WINBOT Dimensions (mm)		271*271*77	
Off/Standby Mode Power		Less than 0.50W	

Output power of the wireless module is less than 100 mW.

Note: Technical and design specifications may be changed for continues product improvement.



**Scan the QR code for
more information.**