

QUICKSTART

Please contact us first with any questions or problems you have about the operation of your Crane humidifier.

 **1-888-599-0992**

 **questions@crane-usa.com**



FILL

Lift top cover, fill with clean water, add 5-8 drops of essential oil into tank. Replace top cover.



HARD WATER

Use filtered water

DO NOT USE DISTILLED WATER



PLACE

Place on a solid elevated surface, at least 2 ft. off the ground.

DO NOT PLACE ON A WOOD SURFACE



EMPTY + CLEAN

Empty tank, use Crane Cleaner or vinegar and water



POWER

Plug in adaptor, press power and allow mist to run in a well ventilated room



STORE

In a cool dry place

Crane

Ultrasonic Cool Mist Humidifier

FOR MODELS:
EE-5401



If you have any questions about the operation of your humidifier, please contact Crane Customer Care.

Toll Free: 888-599-0992

Email: customer-service@crane-usa.com



**PLEASE READ AND SAVE ALL INSTRUCTIONS TO ENSURE
THE SAFE AND EFFECTIVE USE OF THIS HUMIDIFIER.**

SAVE YOUR DATED PROOF OF PURCHASE!

[You will need this in case of warranty]



This device complies with Part 18 of the FCC Rules. Operation is subject to the following two conditions:

- (1) This device may not cause harmful interference, and
- (2) This device must accept any interference received, including interference that may cause undesired operation.

WARNING: Changes or modifications to this unit not expressly approved by the party responsible for compliance could void the user's authority to operate the equipment.

NOTE: This equipment has been tested and found to comply with the limits for a Class B ISM equipment, pursuant to Part 18 of the FCC Rules. These limits are designed to provide reasonable protection against harmful interference in a residential installation. This equipment generates, uses and can radiate radio frequency energy and, if not installed and used in accordance with the instructions, may cause harmful interference to radio communications.

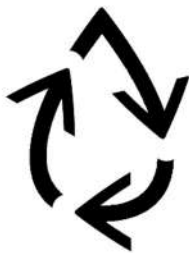
However, there is no guarantee that interference will not occur in a particular installation. If this equipment does cause harmful interference to radio or television reception, which can be determined by turning the equipment off and on, the user is encouraged to try to correct the interference by one or more of the following measures:

- Reorient or relocate the receiving antenna.
- Increase the separation between the equipment and receiver.
- Connect the equipment into an outlet on a circuit different from that to which the receiver is connected.
- Consult the dealer or an experienced radio/TV technician for help.

TABLE OF CONTENTS

Table of Contents & Sustainability	P. 1
Safety Instructions	P. 2-3
List of Main Parts	P. 4
Technical Specifications, Assembly & Use	P. 5-6
Maintenance & Storing Your Humidifier	P. 7
Customer Care & Trouble Shooting	P. 8
Warranty	P. 9

CRANE & SUSTAINABILITY



Crane USA is dedicated to your environment both inside and outside your home. We know if cleaned and maintained properly, our products last for years helping to reduce unnecessary use of resources and emissions making new products.

The Crane manual you are holding is from recycled materials with no added finishes or harmful dyes. If the humidifier should no longer operate, please be sure to dispose of the unit in an environmentally friendly way by taking it to a public collection point.

PLEASE DO NOT PLACE BROKEN HUMIDIFIERS WITH YOUR REGULAR HOUSEHOLD WASTE.

IMPORTANT SAFETY INSTRUCTIONS



WARNING! READ AND SAVE THESE INSTRUCTIONS. Failure to follow all of the instructions listed below may result in electric shock, fire and/or serious personal injury.

1. **It is advisable to carry filled Water Tank with two hands.**
2. **DO NOT operate outdoors. This humidifier is intended for indoor use only.**
3. Always have water in the Water Tank when operating the unit.
4. Use only clean, cool tap water to fill the Water Tank (filtered water is recommended to avoid white dust if tap water is too hard. **DO NOT use hot water.**)
5. Always have the Mist Lid in place while the unit is operating. Place the humidifier so the mist aims away from children, walls, furniture and electrical appliances.
6. Use only a 110-120VAC outlet.
* **ALWAYS plug and unplug unit with dry hands to avoid electric shock.**
7. Never operate the unit with a damaged cord or plug.
8. Always place the unit on a smooth, flat, lint-free, non-metallic, waterproof and level surface and position unit away from direct sunlight. Keep the cord away from heated surfaces and areas where it could be walked on or tripped over. Unplug the unit when not in use and whenever you clean or move the unit.
9. Do not add medication or additives of any type into the Water Basin or Water Tank. Do not cover any openings on the unit or insert objects into any openings. **ONLY** use essential oils or Crane Liquids in this humidifier.
10. The unit should not be left unattended in a closed room as the air could become saturated and leave condensation on walls or furniture. Leave room door partly open when humidifier is being operated.
11. When cleaning the inside of the humidifier, keep water away from the Fan Vent. **Turn off and unplug the humidifier to wipe the exterior** (except the electrical controls) with a damp cloth. Humidifier requires regular cleaning. Please refer to the CLEANING INSTRUCTIONS in this manual.
12. Do not tilt or tip the humidifier or attempt to empty or fill it while it is in operation.
13. Do not use a detergent to clean any parts of the unit that contain water. Detergent film dissolved in the water supply can interfere with the output of the unit. Instead, always use white vinegar mixed with water to clean the humidifier.

SAVE THESE INSTRUCTIONS!

GENERAL SAFETY INSTRUCTIONS



WARNING! Read and understand all instructions. Failure to follow all instructions listed below may result in electric shock, fire or serious personal injury. The warnings, cautions, and instructions discussed in this instruction manual cannot cover all possible conditions and situations that may occur. It must be understood by the user that common sense and caution are a factor which cannot be built into this product, but must be supplied by the user.

THIS HUMIDIFIER IS NOT A TOY!

Do not let your child play with this humidifier. Serious injury and electrocution might be possible. This humidifier has to be operated by an adult only. Children should be supervised to ensure that they do not play with the humidifier.

SAVE ALL INSTRUCTIONS!

CAUTION: A short Power Supply Cord is provided to reduce the risk of personal injury resulting from becoming entangled in or tripping over a longer cord. Extension cords are available from local hardware stores and may be used if care is exercised in their use. If an extension cord is required, special care and caution is necessary. Also the extension cord must be (1) marked with an electrical rating of 125 V and at least 13 A., 1625 W., and (2) the cord must be arranged so that it will not drape over the countertop or tabletop where it can be pulled on by children or accidentally tripped over.

ELECTRIC POWER

If the electric circuit is overloaded by other appliances, your humidifier and/or appliances may not operate properly. The humidifier should be operated on a separate electrical circuit from other operating appliances.



SAFETY WARNING

Although your humidifier is easy to operate, for your safety, the below warnings must be followed:

1. Do not place the humidifier near a heat source.
2. Never leave the humidifier unattended while connected to the electrical outlet.
3. To avoid any accidents, never cover the Mist Lid when the humidifier is in operation.
4. Use the humidifier on a smooth, flat, lint-free, non-metallic, waterproof, and level surface away from water.
5. Do not unplug from the wall socket by pulling on the supply cord.
6. The humidifier must be unplugged:
 - A. Before either filling or emptying the Water Basin and/or Water Tank.
 - B. Before any cleaning or maintenance is performed.
 - C. After each use.
 - D. If it appears to be faulty.

THIS PRODUCT IS INTENDED FOR HOUSEHOLD USE ONLY.

LIST OF MAIN PARTS

Fig. 1 (Humidifier Base)

1. Nebulizer
2. Fan Outlet
3. Humidity Control
4. Timer Control
5. Nightlight Control
6. Fragrance Mode Control

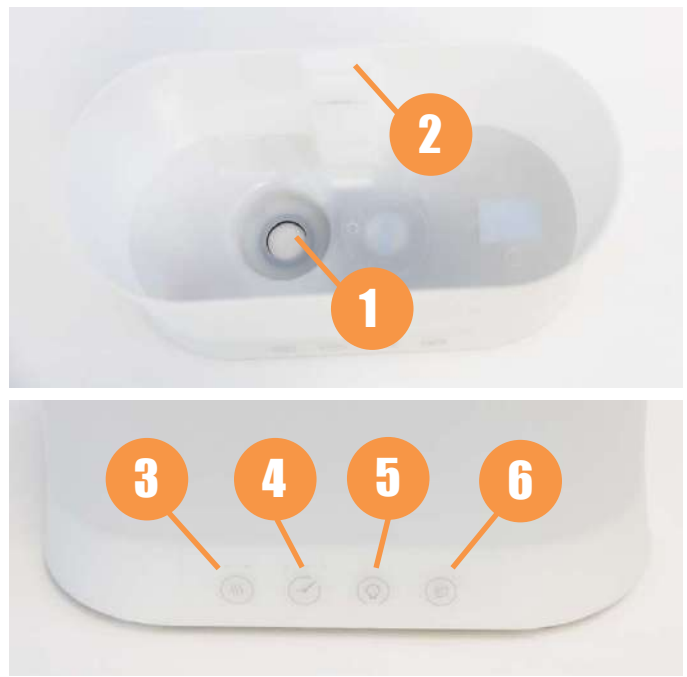
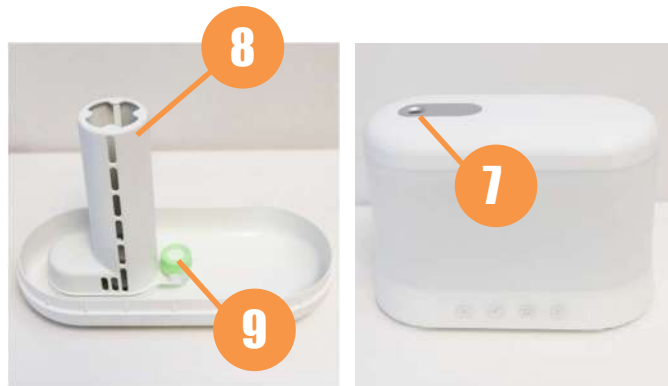


Fig. 2 (Mist Cover)

7. Mist outlet
8. Removable Mist Chamber
9. Essential Oil Bottle (2ml)



TOP

BOTTOM

TECHNICAL SPECIFICATIONS

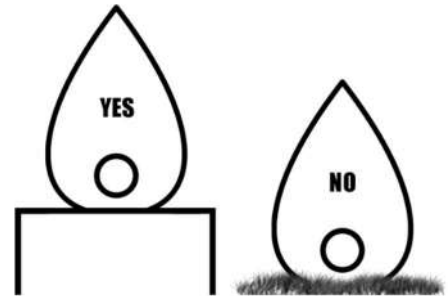
Rating Voltage	120V
Wattage	24W
Frequency	60Hz
Water Tank Capacity	Approx. 0.5 Gallon / 1.8 Liter
Run Time Per Tank	Up to 15 hours
Humidifying Capacity	Up to 250 sq. ft. / 23m ²
Noise Level	< 37 decibels from 3 ft away

BEFORE EACH USE:

CHECK HUMIDIFIER PLACEMENT:

Place the Humidifier on an elevated, non-metallic, lint-free, waterproof, level surface at least 2 feet above the floor.

- **DO NOT PLACE ON CARPET OR TOWEL.** The fan vent is located on the bottom of the humidifier base. The fan vent **MUST NOT** be obstructed.
- **DO NOT PLACE ON WOOD SURFACE** or near furniture that can be damaged by too much moisture.



CAUTION



- **DO NOT** attempt to operate the humidifier without water in the Water Tank.
- **DO NOT** plug or unplug the Power Cord with wet hands as electric shock could occur.

ASSEMBLY & USE

ALWAYS use fresh cool water when operating the humidifier.

1. Remove Mist Cover and fill with cool water only.

Note: DO NOT use distilled water. This item uses an electronic water level sensor to detect the water level in the tank. Distilled water is nonconductive which could lead to a false water level reading.

ALWAYS HOLD UNIT WITH TWO HANDS WHEN FULL.

DO NOT fill water past the MAX fill line.

DO NOT use hot water.

DO NOT pour water into Mist Lid.

2. Place Mist cover back on filled Base so the mist chamber lines up with the nebulizer in the base of the item.
3. Plug the power cord into a wall socket and turn on the humidifier function by using the Humidity Control Button. Press 1x for Medium, 2x for high, 3x to run in sleep mode (Low mist output and lights off), 4x to power off.
4. A Blue Indicator Light will illuminate indicating what mist output setting the unit is being run in.

SET THE CORRECT HUMIDITY OUTPUT: Adjust the mist output so the mist rises up to be absorbed by the room air. If mist drops quickly, use the lower output setting so the mist is rising up.

5. When the humidifier runs out of water, a red indicator light will flash and the mist output will stop. This is a safety feature to prevent the humidifier from possibly overheating and damaging the Nebulizer. Turn the humidifier off and unplug the unit before removing and refilling the water tank. When emptying the base, be sure to pour away from the fan outlet.

Timer: Press to control the optional Timer function

1 Touch – timer set for 2 hours

2 Touch – timer set for 4 hours

3 Touch – timer set for 8 hours

4 Touch – timer off

Nightlight: Press to control the optional night light function. Press once to turn on the color changing night light. Tap to cycle through all color options. Press and hold for 2 seconds to turn off the nightlight function.

NOTE: The night light function can be operated independently without turning on the humidifier function.

Fragrance Mode: Press to control the optional Fragrance Mode. Fragrance Mode will run the unit's fan to output an essential oil's fragrance without running the humidifier function.

1 Touch – Fragrance Mode with indicator light on

2 Touch – Fragrance Mode off, indicator light off

Essential Oil Bottle: Remove the essential oil bottle from the underside of the Mist Cover. Unscrew the cap and add up to 2ml of desired essential oils before screwing the cap back on. Return essential oil bottle back to the underside of the Mist cover.

A NOTE ABOUT HUMIDITY

- To reduce excessive humidity or condensation, especially in small rooms, leave the room door open and adjust mist intensity to the low output setting.
- Too much humidity in the room may allow moisture to accumulate on surfaces where bacteria and fungi can grow. Moisture that gathers may also damage furniture and walls, especially wallpaper.

MAINTENANCE

Cleaning and disinfecting on a regular basis is important for maintaining the performance of your humidifier.

IMPORTANT: Water left in the tank or base when not in use may result in buildup of mineral deposits and bacteria which may inhibit the output efficiency as well as void the warranty. If water remains in the Water Tank for more than a day or two, bacterial growth is possible.

DAILY MAINTENANCE

1. Turn off, unplug from outlet and empty water from tank & base daily.
2. Allow tank & base to air dry.
3. Leave mist cover off the tank until ready for next use.

WEEKLY MAINTENANCE

1. Turn off, unplug from outlet and empty water from tank & base.
2. Fill the water tank halfway warm water and add 2 Tablespoons of white vinegar. Let sit for 30 minutes. Empty tank and rinse with plain water.
3. Remove the mist chamber from the underside of the Mist Cover and rinse with Warm soapy water.
TIP: Clean the nebulizer with a damp cloth or cotton swab after soaking.
4. Allow tank & base to air dry and leave mist cover off the tank until the next use.
NEVER IMMERSER HUMIDIFIER BASE IN WATER.

END-OF-SEASON MAINTENANCE & STORING YOUR HUMIDIFIER

1. Turn off, unplug from outlet, and empty water from tank.
2. Follow instructions for weekly maintenance above.
3. Let all parts dry completely.
4. Store humidifier in a cool, dry place.

CRANE CUSTOMER CARE

CALL US: 888-599-0992 (Mon-Fri 9:00am – 4:00pm CST)
EMAIL US: customer-service@crane-usa.com
LIVE CHAT: available at www.crane-usa.com

TROUBLESHOOTING

DO NOT attempt to repair the motor yourself.

If the humidifier continues to not operate, please contact Crane Customer Care.

Problem	Solution
Indicator Light is Staying Red:	<ul style="list-style-type: none">▪ Ensure there is water in the water tank▪ Clean the base of the item per the weekly cleaning steps.▪ Ensure that distilled water is not being used in the water tank. If the tank is filled with distilled water, switch to tap or filtered water.
Humidifier Does Not Have Any Power:	<ul style="list-style-type: none">▪ Ensure unit is properly plugged into a power outlet / try another power outlet.▪ Check that the unit is powered on▪ If Power On indicator light does not come on, contact Customer Care.
There is a Strange Odor:	<ul style="list-style-type: none">▪ Clean the Water Tank with a water & white vinegar solution and rinse with clean water. <i>(Page 7)</i>▪ Leave the empty Water Tank open in a cool place for 12 hours without the Water Tank Cap attached.
Indicator Light is Green, But There's No Mist:	<ul style="list-style-type: none">▪ Complete the weekly maintenance. <i>(Page 7)</i>▪ Humidifier should be placed on a hard flat surface & fan vent should not be blocked.▪ The base might be overfilled: Remove the mist cover, empty water to below the MAX fill line▪ Try turning the control knob up to MAX and let it run for 10 minutes.
White Dust Appears & Settles Outside the Humidifier:	<ul style="list-style-type: none">▪ Area tap water may have too many minerals. Change to filtered or distilled water, or use with a Crane Demineralization Filter cartridge.
Humidifier is Leaking:	<ul style="list-style-type: none">▪ From TANK: Check for possible cracks in the tank or around the seam of the tank▪ From BASE: Call Customer Care

NOTE: Spare Parts can also be purchased online at www.crane-usa.com

CRANE WARRANTY

For more information regarding the warranty policy,
please visit our website: www.crane-usa.com/customer-service

LIMITED WARRANTY

Thank you for purchasing a Crane product which has been tested to meet our stringent quality standards. This product is warranted to be free from manufacturing defects under normal use and conditions for 1 year.

**PLEASE CONTACT US BEFORE RETURNING THIS PRODUCT TO THE STORE.
CALL CRANE CUSTOMER CARE FOR PROBLEMS AND QUESTIONS. WE CAN HELP.**

WARRANTY REQUIRES A DATED PROOF OF PURCHASE.

This warranty is void if the defect is due to accidental damage, misuse, abuse, neglect, improper repair or alteration by unauthorized persons, or a failure to follow operating instructions provided with the product **including the use of essential oils or vapor pads directly into the tank**. This warranty does not apply to normal wear and tear or commercial use.

In no event shall liability exceed the purchase price paid by the purchaser of the product. Under no circumstances shall there be liability for any loss – direct, indirect or incidental – or consequential damage arising out of, or in connection with the use of this product.

This warranty is valid only in the 48 contiguous states plus the District of Columbia and excludes Puerto Rico and the Virgin Islands. This warranty is effective only if the product is purchased and operated in the United States of America.

Any instructions or warranty included in this manual may be subject to change without notice. For the most up-to-date instructions and warranty information, please contact us or visit our website.

**TO RECEIVE WARRANTY INSTRUCTIONS AND RETURN AUTHORIZATION,
PLEASE CALL OR EMAIL CRANE CUSTOMER CARE.**

CRANE USA, INC.
1015 Hawthorn Dr., Itasca, IL 60143

Toll Free: 1-888-599-0992 (Monday - Friday 9:00am - 4:00pm CST)

Email: customer-service@crane-usa.com

Website: www.crane-usa.com

Crane
DESIGN FOR BETTER LIVING