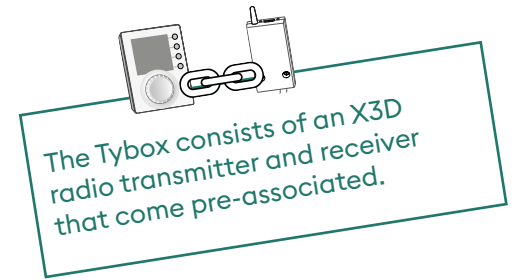


# Tybox 137+

www.deltadore.com



## Contents

### Installation

- 1. Installing the transmitter..... 3**
  - 1.1 Location.....3
  - 1.2 Mounting.....3
- 2. Installing the receiver..... 4**
  - 2.1 Location.....4
  - 2.2 Mounting/Connection .....4
- 3. Time and date setting ..... 4**
- 4. Configuring your device (Menu 1) ..... 5**
  - Menu 1-02 Programme duration.....5
  - Menu 1-03 Pre-heat activation/deactivation.....5
  - Menu 1-04 Selecting the way the receiver relay opens.....5
  - Menu 1-08 Controlling the Comfort temperature .....5
  - Menu 1-09 Anti-seize activation/deactivation .....6
  - Menu 1-10 Selecting the programming type when connected to Tydom .....6
- 5. Configuring your device (Menu 2) ..... 7**
  - Menu 2-01 Locking or unlocking the settings.....7
  - Menu 2-02 Correcting the measured temperature .....7
  - Menu 2-04 Temperature displayed in AUTO mode (setpoint or room).....7
  - Menu 2-05 12h/24h time format.....7
  - Menu 2-06 Automatic summer/winter changeover .....8
  - Menu 2-07 Days until boiler/heat pump service reminder .....8
  - Menu 2-08 Control time base .....8
  - Menu 2-11 Hysteresis setting (if 2-08 = tor) .....8
  - Menu 2-17 Resetting the boiler/heat pump operating hours meter.....9
- 6. Associating to the Tydom app..... 9**
- 7. Association with a door/window magnetic contact ..... 9**
- 8. Association with a phone transmitter..... 9**

9. Association with a repeater .....	10
10. Factory reset .....	10
11. Installation Assistance .....	11
11.1 Unpairing/re-associating the receiver with the transmitter.....	11
11.2 Removing associations from the receiver.....	12
11.3 Radio quality test .....	12
12. Technical characteristics .....	13

## Use

1. Description .....	14
2. Automatic mode (AUTO).....	14
3. Override .....	15
4. Information button .....	15
5. Time setting.....	16
6. Adjusting temperature settings .....	16
7. Current day .....	17
7.1 Quick programming .....	17
7.2 Customising a programme .....	17
7.3 Programme verification .....	18
7.4 Return to initial programme .....	18
8. Manual mode .....	19
9. Absence mode .....	19
10. Off mode.....	19
11. Pre-heat function.....	20
12. Open window detection.....	20
13. Operation in connected mode with the Tydom app .....	20
13.1 Programming via the Tydom app (menu 1-10 = 1). .....	20
13.2 Programming via the Tybox (menu 1-10 = 0). .....	20
14. Troubleshooting.....	21
14.1 What the receiver LEDs mean .....	21
14.2 Signals on the transmitter .....	21
14.3 Changing batteries .....	22
14.4 Frequently Asked Questions (FAQ).....	22

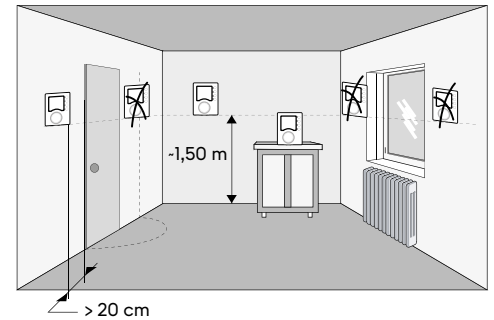
# INSTALLATION

## 1. Installing the transmitter

### 1.1 Location

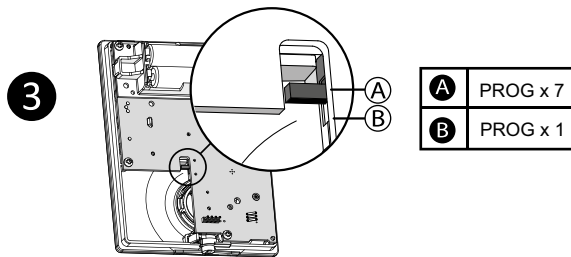
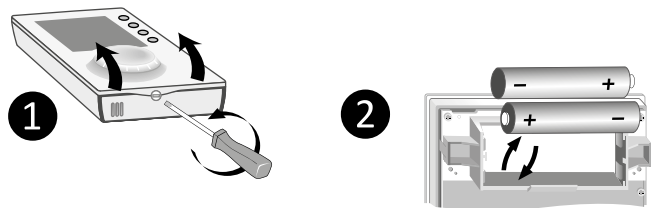
The thermostat can be wall-mounted or placed on a piece of furniture in a room where the temperature is to be regulated from, at a recommended height of 1.5m and away from any heat sources (fireplace, direct sunlight, etc.) or draughts (window, door, etc.).

**IMPORTANT:** Do not install the thermostat on a wall in contact with the outside or with an unheated room (e.g. garage, etc.).

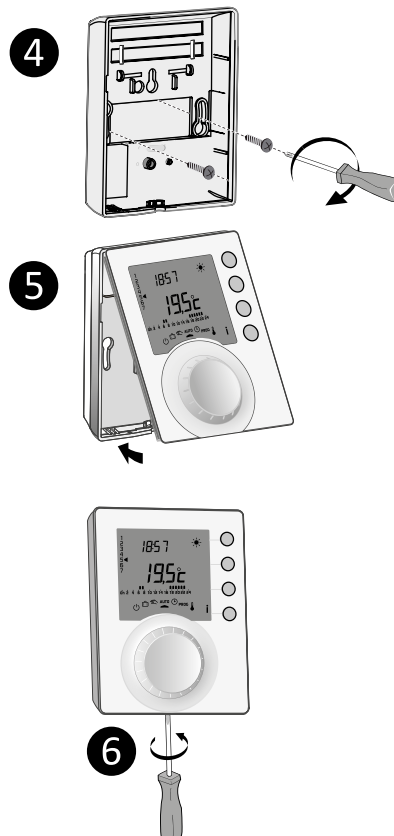


### 1.2 Mounting

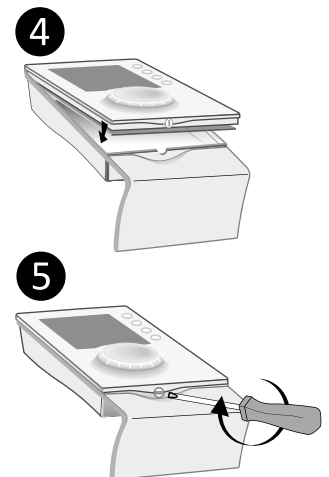
- 1 Separate the box from its base.
- 2 Insert the batteries  
**WARNING:** make sure you insert the batteries facing the right way and that they are the right type (no lithium batteries).
- 3 Toggle the switch to choose the programme type: weekly (A) or daily (B).
- 4 Secure the transmitter with suitable screws to the wall-mount or use the supplied stand to place it on a flat (non-metallic) surface.
- 5 6 Close and lock the box.



#### Wall mounting



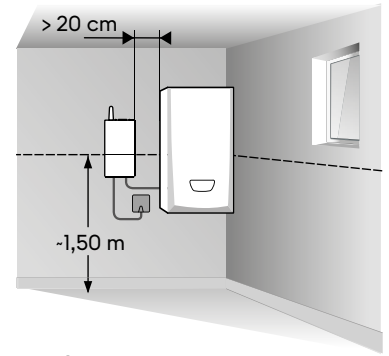
#### Fitted on base



## 2. Installing the receiver

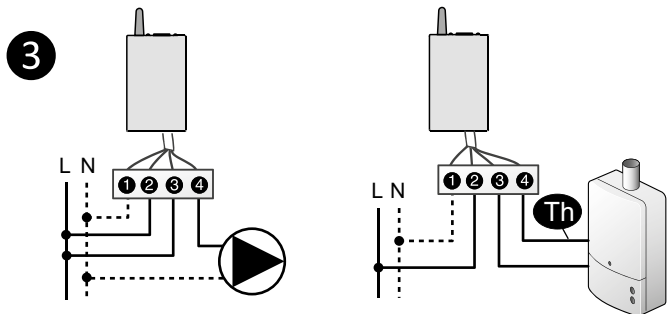
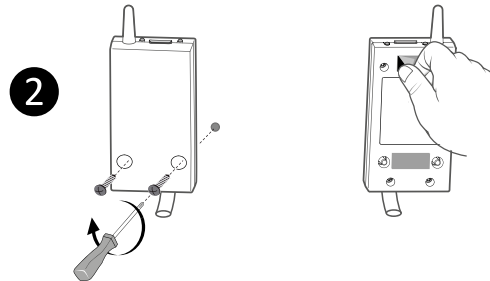
### 2.1 Location

The receiver must be installed a minimum of 20 cm away from any metal surface (e.g. the boiler), and about 1.50 m from the ground to ensure an optimum radio link with the transmitter.



### 2.2 Mounting/Connection

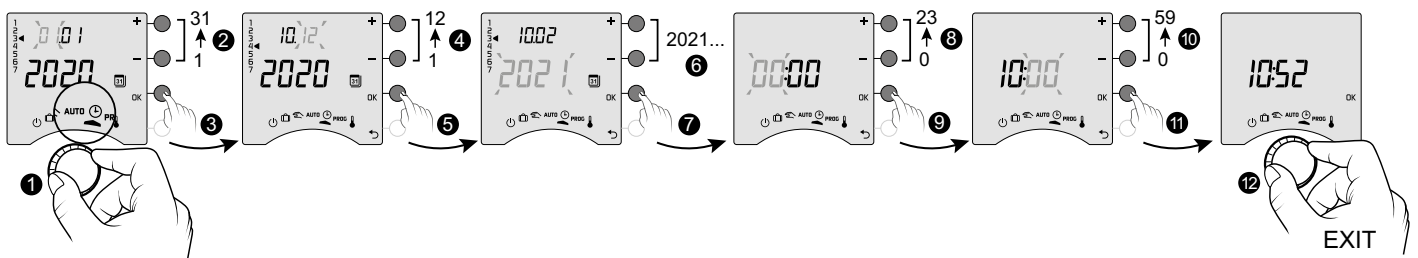
- 1 First of all, switch off the power to your installation.
- 2 The receiver can be fixed using suitable screws or by (supplied) adhesives.
- 3 Comply with the cable colours when wiring.  
Blue: Neutral  
Brown: Live  
Black and grey: Controls for the thermostat input or the generator circulator (boiler or heat pump).
- 4 Once the receiver is connected, turn on the power to your installation.



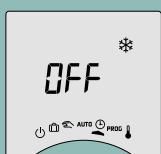
#### REMINDER:

The Tybox consists of an X3D radio transmitter and receiver that come pre-associated.

## 3. Time and date setting

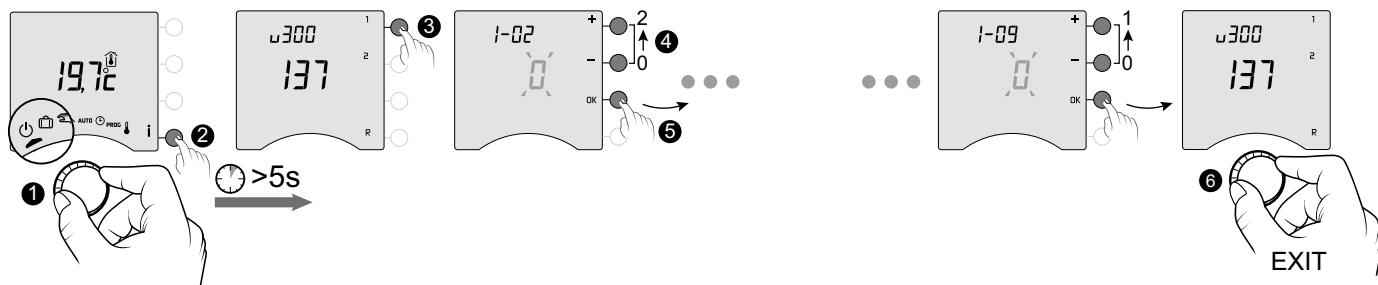




- 1 Turn the dial to
- 2 -> 6 Set the day, month, year with + or -.
- 7 Confirm with OK.
- 8 -> 10 Set the hour then the minutes with + or -.
- 11 Confirm with OK.
- 12 To exit the mode, turn the dial.



If the screen displays "OFF", your product is connected to the Tydom app (menu 1-10 = 1). The date and time details are no longer show on the thermostat screen.  
**WARNING:** the heating is set to Frost Protection when in this position.

## 4. Configuring your device (Menu 1)



1 Turn the dial to , then press the  button for 5 seconds (2).

3 Press the 1 button. To change the various settings, press the + or - buttons (4), then press OK to confirm the change and go to the next setting (5).

6 To exit the mode, turn the dial.

### Menu 1-02 Programme duration

You can set programming by the hour, half hour, or quarter of an hour.  
Default setting: 1 hour.

0	60 min.
1	30 min.
2	15 min.

Menu 1-02 does not appear if your Tybox is linked with the Tydom app (menu 1-10 = 1).

### Menu 1-03 Pre-heat activation/deactivation

Pre-heat means you can enjoy the Comfort temperature you want at the scheduled hour (see § "Pre-heat function").

Default setting: Pre-heat off

0	Pre-heat off
1	Pre-heat on

Menu 1-03 does not appear; -  
if your Tybox is linked with the Tydom app (menu 1-10 = 1).  
- if the Comfort temperature is controlled by each radiator (menu 1-08 = 1).

### Menu 1-04 Selecting the way the receiver relay opens

Tybox allows you to choose which way the relay opens to suit all use cases.

Default setting: Relay normally open

0	The relay is normally open
1	The relay is normally closed

### Menu 1-08 Controlling the Comfort temperature

For hot water heaters with thermostatic valves, the Comfort temperature can be provided by adjusting the thermostat on each radiator.

In AUTO mode, the device will show "Conf" during Comfort periods and will be set to constant heating. Only the Economy and Frost Protection temperatures are controlled by the Tybox.

Default setting: Comfort temperature is controlled by the Tybox.

0	Comfort temperature controlled by Tybox
1	Comfort temperature controlled by each radiator

Menu 1-08 does not appear: -  
if your Tybox is linked with the Tydom app (menu 1-10 = 1).  
- if pre-heat is on (1-03 = 1).  
Choice 1 turns off pre-heat (1-03 = 0). In this case, menu 1-03 no longer comes up.

## Menu 1-09 Anti-seize activation/deactivation

Anti-seize can be used outside heating periods to regularly start up the circulator/boiler/heatpump during off periods (5 minutes/week).

Default setting: Anti-seize off

0	Anti-seize off
1	Anti-seize on

## Menu 1-10 Selecting the programming type when connected to Tydom

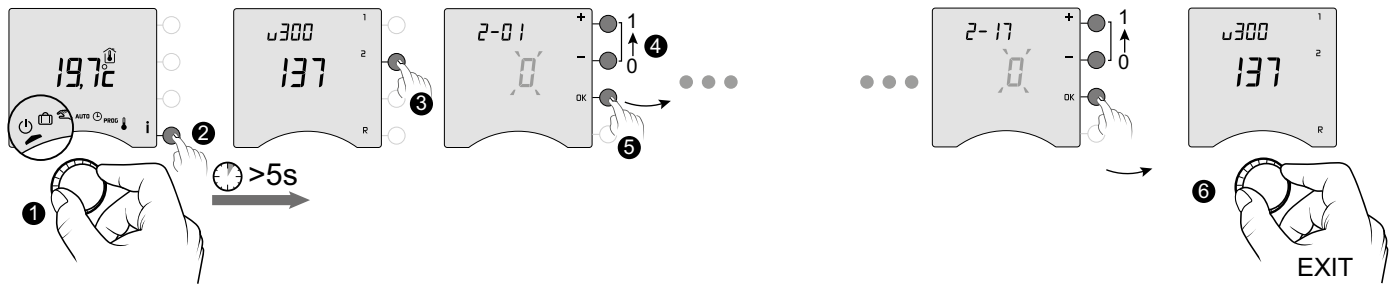
This menu is only available if your Tybox is linked with a Tydom smart home gateway.

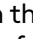
Default setting: Programming via the Tydom app.

0	Programming via the Tybox
1	Programming via the Tydom app

- If you select "Programming via the Tybox", make sure there is no programme saved on the Tydom app.
- If you select "Programming via the Tydom app", the Tybox **MUST be** in AUTO mode for it to operate based on the Tydom app timing.

## 5. Configuring your device (Menu 2)



1 Turn the dial to , then press the **i** button for 5 seconds (2).



3 Press the **2** button. To change the various settings, press the **+** or **-** buttons (4), then press **OK** to confirm the change and go to the next setting (5).

6 To exit the mode, turn the dial.

### Menu 2-01 Locking or unlocking the settings

This menu enables you to authorise or lock changes to the settings such as programming or setpoint temperatures. Locking only applies to settings entered via the Tybox.

Default setting: Changes allowed

	Changes allowed
	No changes to the programme. Adjusting setpoint temperature settings.

Adjustment in manual and Comfort mode limited to between 5°C and 22°C.  
Economy setting limited to between 5°C and 19°C.  
Frost protection setting limited to between 5 and 11°C.

### Menu 2-02 Correcting the measured temperature

This menu is used to correct any difference you have noticed between the displayed temperature and the measured temperature.

Example: If the temperature displayed by the device is 19°C and the measured temperature is 20°C, change to +1°C then confirm using **OK**.



Default setting: 0°C

Adjusts from -5°C to 5°C, in increments of 0.1°C.	
--	--

In order to change this setting, the unit must have been running for at least 2 hours beforehand.

### Menu 2-04 Temperature displayed in AUTO mode (setpoint or room)

Default setting: setpoint temperature displayed.

	Displays setpoint temperature
	Displays room temperature

In normal use, press the **i** button to check one or other of the temperatures.

### Menu 2-05 12h/24h time format

Default setting: 24h

24 h
12 h

Menu 2-05 does not appear if your Tybox is linked with the Tydom app (menu 1-10 = 1).

## Menu 2-06 Automatic summer/winter changeover

Default setting: Automatic changeover

0	No automatic changeover
1	Automatic changeover

Menu 2-06 does not appear if your Tybox is linked with the Tydom app (menu 1-10 = 1).

## Menu 2-07 Days until boiler/heat pump service reminder

Must be reset after every service.

Default setting: "---" (function off).

Adjustable "---" (function off) or from 1 to 365 days
---

If you don't want to use this function, leave the setting on "---".

## Menu 2-08 Control time base

The control quality depends on parameters like the building's insulation, the number of radiators or the flooring type. The "Tips" column in the following table will help you select the setting that is appropriate for your setup. Default setting: 15 minutes.

	Choice of control type	Heater type	Generator type	Tips
15	15 minutes <sup>(2)</sup>	Radiator	Boiler/Heat pump <sup>(1)</sup>	Increase the time base to extend generator run times and thus prevent starting up so often.
30	30 minutes <sup>(2)</sup>	Radiator Underfloor heating	Boiler/Heat pump <sup>(1)</sup>	
45	45 minutes <sup>(2)</sup>	Underfloor heating	Boiler/Heat pump <sup>(1)</sup>	Reduce the time base if you notice big differences in temperature.
60	60 minutes <sup>(2)</sup>	Underfloor heating	Heat pump <sup>(1)</sup>	
tor	All or nothing/ On-off	Radiator Underfloor heating	Heat pump <sup>(1)</sup>	Only recommended if the PID control isn't satisfactory. Recommended hysteresis value: between 0.4 and 1
		Oven range heating		Hysteresis value: follow the value recommended by the range's manufacturer

- (1) The control is fitted with anti-short cycle protection to suppress start or stop requests when they are too short. The anti-short cycle duration is 10% of the time base selected (e.g.: if the time base is set to 30 minutes, the anti-short cycle will be 3 minutes, i.e. the thermostat will not accept any start or stop requests that are under 3 minutes).

- (2) PID control time base:



### Menu 2-11 Hysteresis setting (if 2-08 = tor)

- Default setting: 0.4°C.

Adjusts from 0.2°C to 2°C, in increments of 0.1°C.
--

Example:  
Setpoint 20°C. Hysteresis 0.4°C.  
Heating request if T° measured <19.8°C.  
Heating shuts down if T° measured > 20.2°C.

## Menu 2-17 Resetting the boiler/heat pump operating hours meter

Default setting: Off

0	No
1	Yes

Once the reset is applied, the 2-17 menu automatically switches back to 0.

## 6. Associating to the Tydom app

Open the Tydom app on your smartphone or tablet, then select:

Settings -> My devices -> Add device -> Heating -> Hydraulic -> Tybox 137+ (RF6000 +)

After associating with the Tydom app, the Tybox automatically activates programming via Tydom (menu 1-10 = 1), and removes access to menus 1-02, 1-03, 1-08, 2-05 and 2-06.

You can activate pre-heat on the Tydom app if you want to use it (see § Pre-heat function).

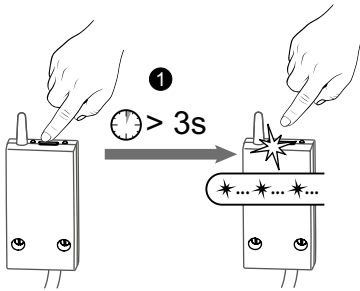
### IMPORTANT:

For the Tydom time programming to work, the Tybox must be set to the "AUTO" position.

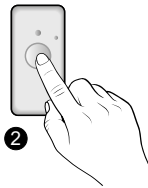
For more information, refer to the section § "Operation in connected mode".

## 7. Association with a door/window magnetic contact

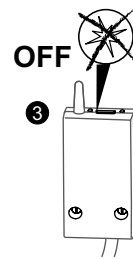
Linking with a door/window magnetic contact means the heating is switched to Frost Protection if a window is opened (for more than 10 seconds).



1 Press the receiver button for 3 seconds until the red LED flashes.

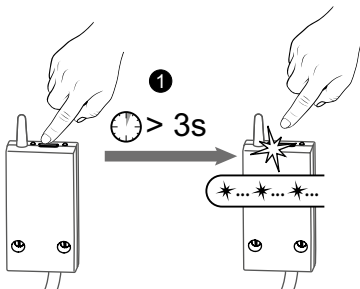


2 Briefly press the detector button.



3 Make sure that the receiver LED has stopped flashing.

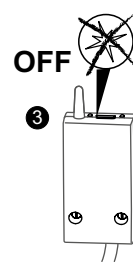
## 8. Association with a phone transmitter



1 Press the receiver button for 3 seconds until the red LED flashes.



2 From the transmitter's main menu, tap #400, then tap 1: the transmitter announces "Configuration in progress..." and indicates the number of connected receivers.

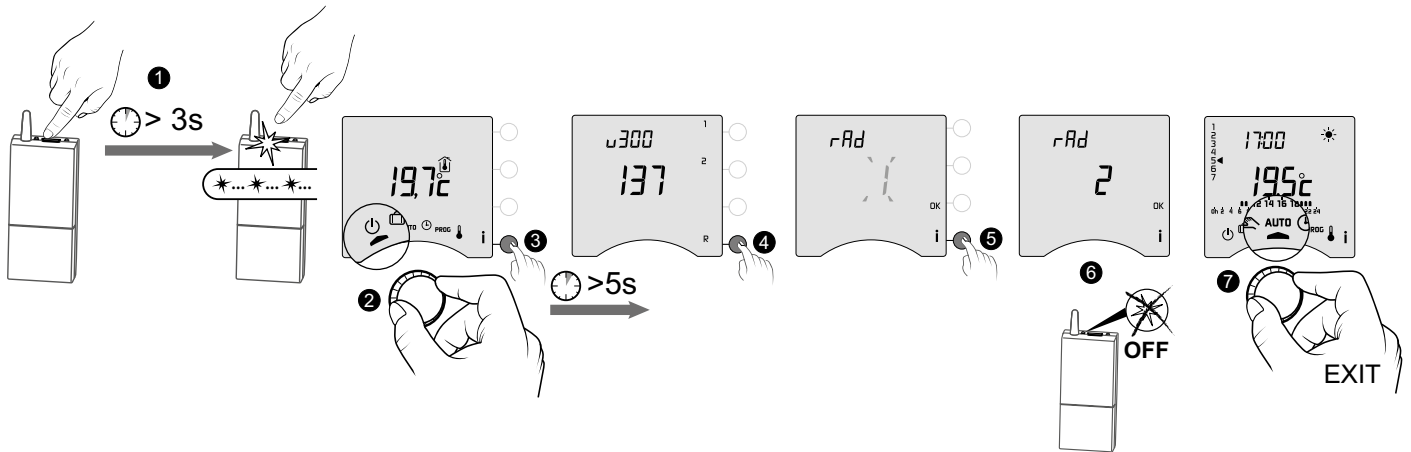



3 Make sure that the receiver LED has stopped flashing.

Refer to the transmitter manual for a description of controlling the heating using the phone.

## 9. Association with a repeater

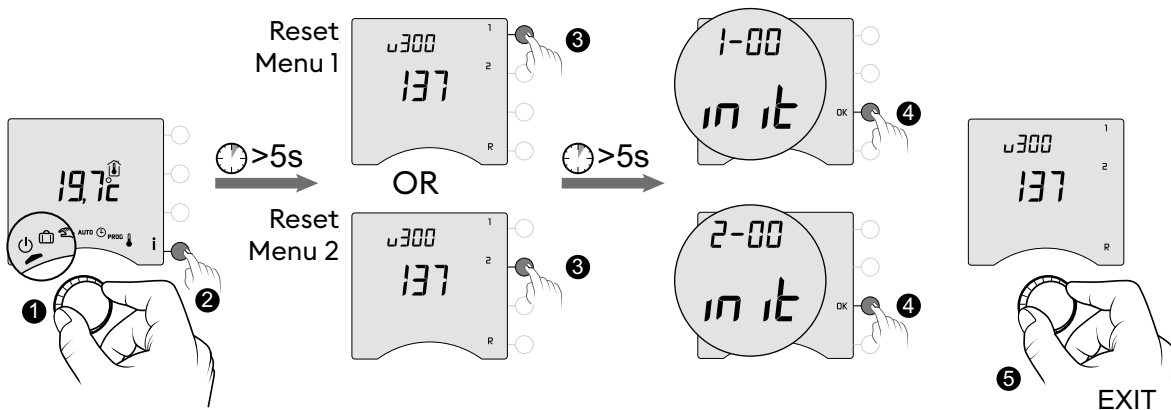
If the radio signal is weak and the transmitter cannot be moved closer to the receiver, you can add an X3D repeater (booster) to your installation (example: ERX 2000).




- 1 Press the ERX 2000 receiver button for 3 seconds until the red LED flashes. Release.
- 2 Turn the dial on the transmitter to , then press the **i** button for 5 seconds (3).
- 3 The display shows 19.7c.
- 4 Briefly press **R**. The display shows rAd 1.
- 5 Briefly press **i**.
- 6 The "1" flashes then displays "2". The booster LED stops flashing.
- 7 To exit the mode, turn the dial to OFF.

## 10. Factory reset

The default factory settings may be restored for each of the menus.



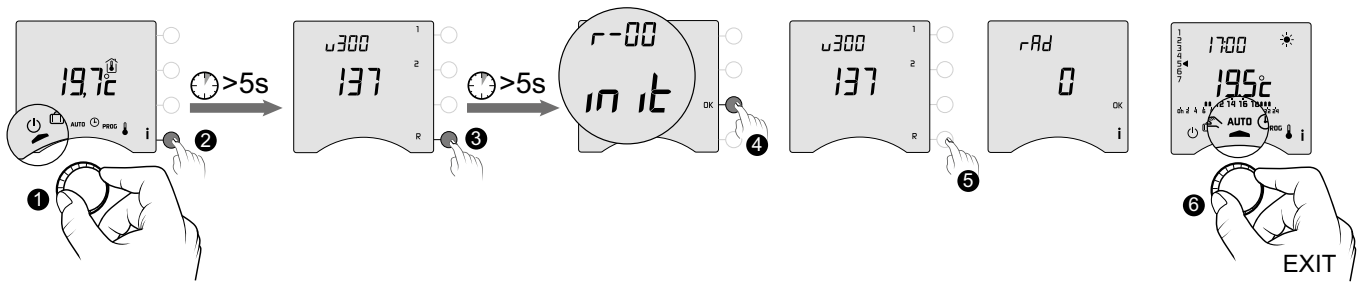
- 1 Turn the dial to , then press the **i** button for 5 seconds (2).
- 2 The display shows 19.7c.
- 3 Press the button on the menu you wish to reset, and hold the button for 5 seconds.
- 4 Then press the OK button to confirm the reset.
- 5 To exit the mode, turn the dial to OFF.

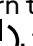
## 11. Installation Assistance

### 11.1 Unpairing/re-associating the receiver with the transmitter

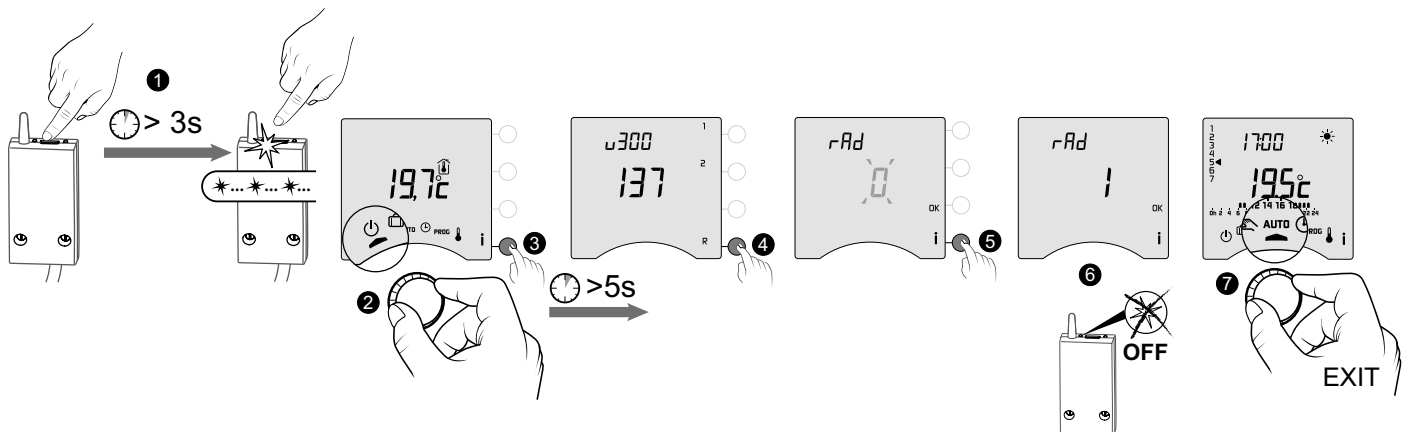
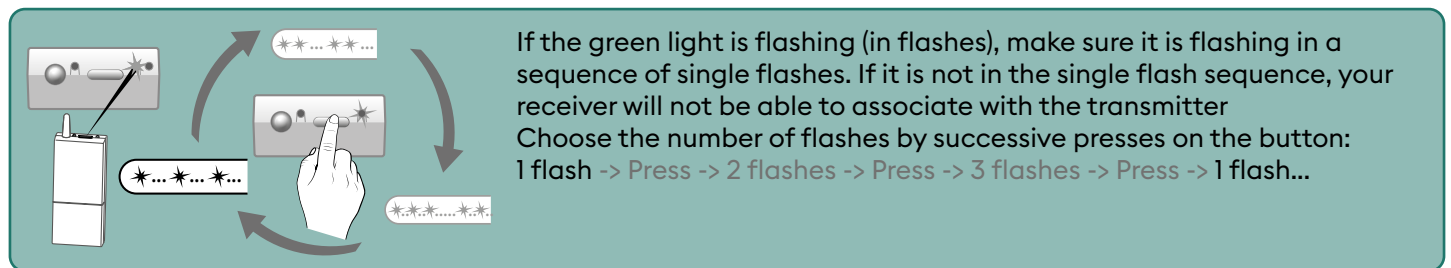
If there's a breakdown, you may need to unpair a product and/or re-associate a new one.

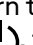
#### Unpairing the transmitter from the receiver



- 1 Turn the dial on the transmitter to , then press the **i** button for 5 seconds (2).
- 2 The display shows 137.
- 3 Press the **R** button for 5 seconds.
- 4 Then press the **OK** button to confirm the reset.
- 5 Press **R** to verify that **rAd = 0**.
- 6 To exit the mode, turn the dial.

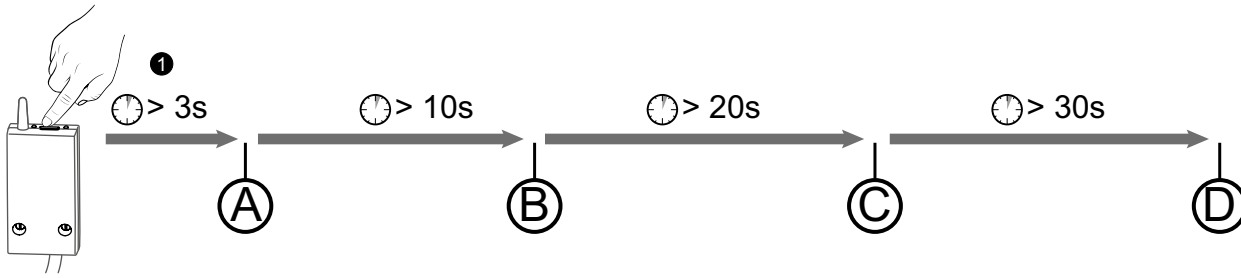
#### Re-associating the receiver to the transmitter



- 1 Press the receiver button for 3 seconds until the red LED flashes. Release.
- 2 Turn the dial on the transmitter to , then press the **i** button for 5 seconds (3).
- 3 The display shows 137.
- 4 Briefly press **R**. The display shows **rAd 0**.
- 5 Briefly press **i**.
- 6 The "0" flashes then displays "1". The receiver LED stops flashing.
- 7 To exit the mode, turn the dial.

## 11.2 Removing associations from the receiver

Hold down the button to remove the radio associations from the receiver.



Ⓐ : The red LED flashes after 3 seconds.  
The receiver is in pairing/association mode.

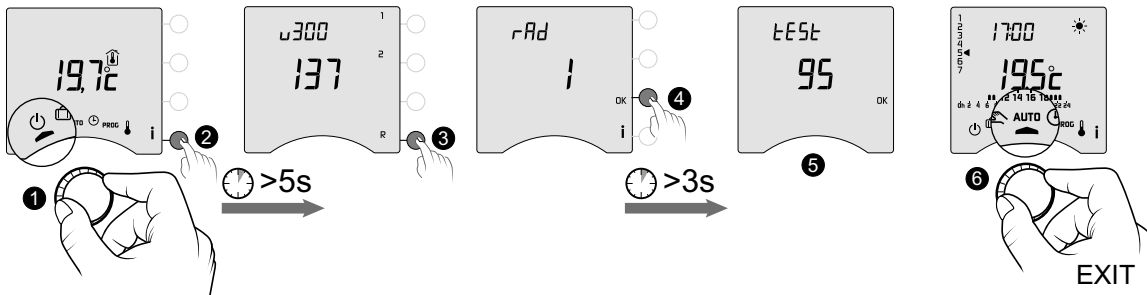
Ⓑ : If you continue holding down the button, the red LED flashes quickly after 10 seconds.  
The receiver is waiting to remove the association with an opening detector or a booster (check on the device you want to unpair).


Ⓒ : If you continue holding down the button, the red LED turns off after 20 seconds.  
All associations with the receiver are now removed.

Ⓓ : If you continue holding down the button for 30 seconds, the LED flashes 3 times.  
The receiver is fully reset (back to factory settings).

## 11.3 Radio quality test

This mode helps you check the radio quality between the transmitter and the receiver.



1 Turn the dial on the transmitter to , then press the i button for 5 seconds (2).

3 Briefly press R button once.  
The display shows rAd.

4 Press OK for 3 seconds until the display shows "tEst".

5 The number shows the transmission quality percentage

< 30	Weak
from 30 to 60	OK
> 60	Good

6 To exit the mode, turn the dial.

If the number is too low, move the transmitter closer to the receiver or add a repeater (booster) to your installation.

## 12. Technical characteristics

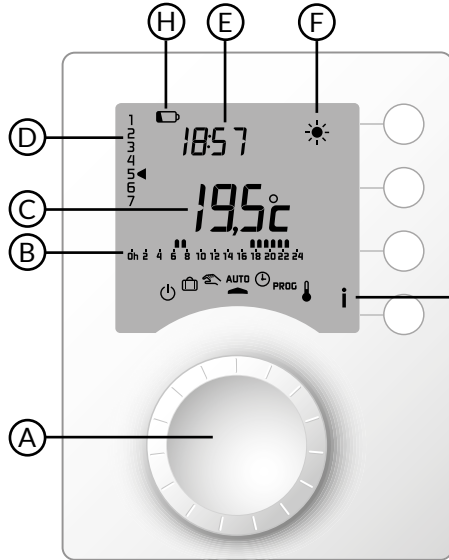
### Transmitter

- Power supply using 2 batteries:  
2x1.5V Alkaline - Type LR03-AAA
- Class III insulation
- X3D transmission frequency: 868.7 MHz to 869.2 MHz
- Maximum wireless power < 10 mW
- Category II receiver
- Wireless remote control device
- Wireless range of 300 metres outside, varies depending on the linked equipment (the range can vary depending on the setup conditions and the electromagnetic environment).
- Wall mounted or table stand unit
- Dimensions: 80 x 103 x 25 mm
- Protection rating: IP 30
- Installation in an environment with normal pollution levels
- Storage temperature: -10°C /+70°C
- Operating temperature from -10°C/+40°C

### RF 6000+ receiver

- Power supply 230 V ~, 50 Hz
- Consumption: 0.5 VA
- Class II insulation
- Contact output 5 A max., 230V ~
- Cable length: 1 m
- Type 1.C automated action
- Dimensions: 54 x 102 x 20 mm
- X3D transmission frequency: 868.7 MHz to 869.2 MHz
- Maximum wireless power < 10 mW
- Category II receiver
- Wireless remote control device
- Wireless range of 300 metres outside, varies depending on the linked equipment (the range can vary depending on the setup conditions and the electromagnetic environment).
- Protection rating: IP x4
- Storage temperature: -10°C /+70°C
- Operating temperature from -10°C/+40°C
- Ball test temperature: 75°C (Housing),
- Rated impulse voltage: 2,500V

## 1. Description

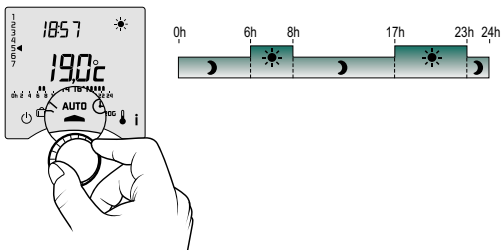


- (A) Selector dial
- (B) Programme profile
- (C) Room
- (D) Day (1 = Monday)
- (E) Time
- (F) Current setpoint
- (G) Information
- (H) Low batteries

- Off mode
- Absence mode
- Manual mode
- AUTO** Follows programming
- Date and time settings
- PROG** Programming
- Adjusting setpoint temperature settings
- Comfort
- Economy
- Frost protection

## 2. Automatic mode (AUTO)

Turn the selector dial to AUTO.



Your thermostat will follow one of 2 programme types:

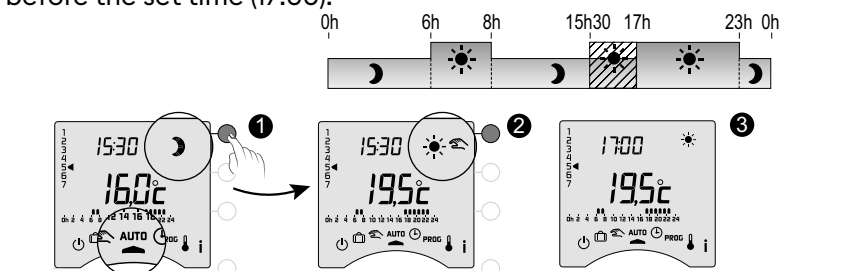
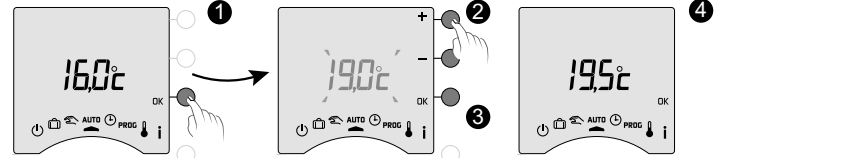
- Programming via the Tybox.
- Programming via the Tydom app (menu 1-10 = 1).

Depending on the configuration during installation, your unit will continuously display the setpoint temperature or the room temperature (menu 2-04).

If you are in the programmed Economy period, and the symbol flashes and the Comfort setpoint is displayed, it's because pre-heating is in progress (see § Pre-heat function).

### 3. Override

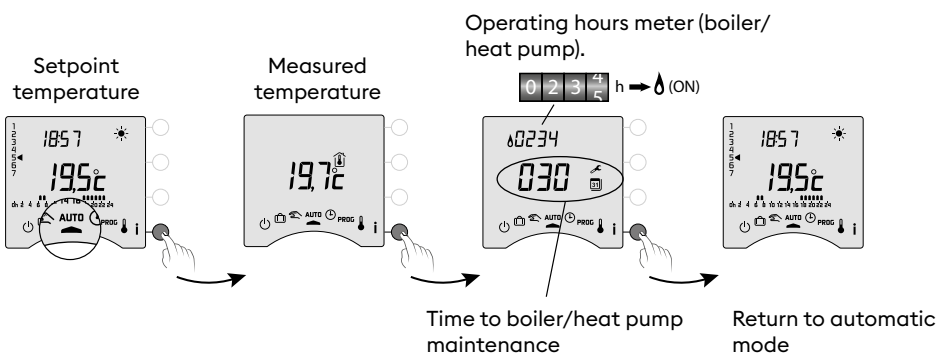
In AUTO mode, you can use the override to change the setpoint temperature until the next programmed point.

Programming type	Override type	Operating mode
Programming via the Tybox	Comfort or Economy	<p>Example: it is 15:30 and you would like to switch to Comfort mode before the set time (17:00).</p>  <p>1 Press the button</p> <p>2 Override in progress</p> <p>3 At 17:00, the programme will return to its usual schedule.</p> <p>To cancel the current override, press the button once more.</p>
Programming via the Tydom app (menu 1-10 = 1)	Setpoint temperature adjustment.	 <p>1 Press the OK button.</p> <p>2 Set the desired setpoint using + and - and confirm with OK (3).</p> <p>4 The override will be cancelled the next time the Tydom app programme changes.</p>

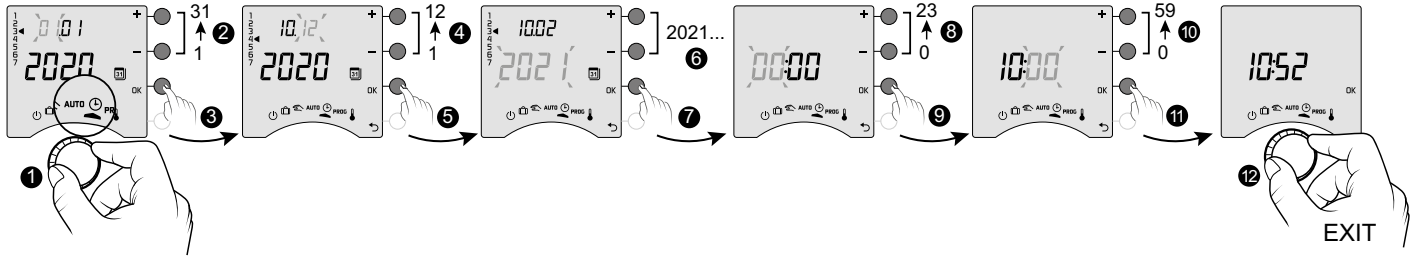
### 4. Information button


In AUTO, manual or off mode, successive presses on the **i** button enable you to:

- find out the room temperature or the setpoint temperature (depending on the configuration during installation (menu 2-04),
- show the boiler/heat pump operating hours meter, as well as the number of days remaining before maintenance (if this setting is on, menu 2-07),
- show any faults (see § "Changing batteries").



## 5. Time setting



① Turn the dial to .

② -> ⑥ Set the day, month, year with + or -.

⑦ Confirm with OK.

⑧ -> ⑩ Set the hour then the minutes with + or -.

⑪ Confirm with OK.

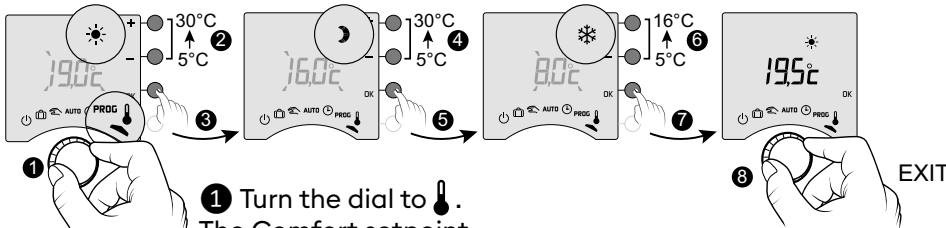
⑫ To exit the mode, turn the dial.




If the screen displays "OFF", your product is connected to the Tydom app (menu 1-10 = 1). The date and time details are no longer show on the thermostat screen.  
**WARNING:** the heating is set to Frost Protection when in this position.

## 6. Adjusting temperature settings




- If your product is connected to the Tydom app (menu 1-10 = 1), you can only set the Frost protection temperature.
- If the Comfort temperature is controlled by each radiator (menu 1-08 = 1), you can only set Economy and Frost protection temperatures.
- The temperature settings may be restricted (menu 2-01 = 1).



① Turn the dial to .  
The Comfort setpoint temperature flashes.

② ③ Press + or - to adjust, then press OK to confirm and go to the next setting.

④ -> ⑦ Repeat the operations to adjust the Economy and Frost protection temperatures.

-  Comfort (from 5°C to 30°C)
-  Economy (from 5°C to 30°C)
-  Frost protection (5°C to 16°C)

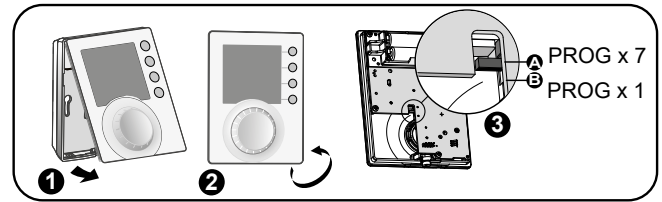
⑤ To exit the mode, turn the dial.

## 7. Current day

You can opt for weekly (PROGx7) or daily (PROGx1) programming.

You can select your choice using the switch on the back of the device.

You can programme in increments of one hour, 30 minutes or 15 minutes (menu 1-02).



There are two phases of programming:

### 1 Quick programming:

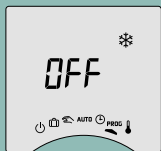
Choose from among the pre-set programmes available (P1 -> P5) and apply it (see table).

For daily programmes (PROG x1), only P1 and P5 are available.

### 2 Programme customisation:

Customise the programme profile applied to a day based on preferences.

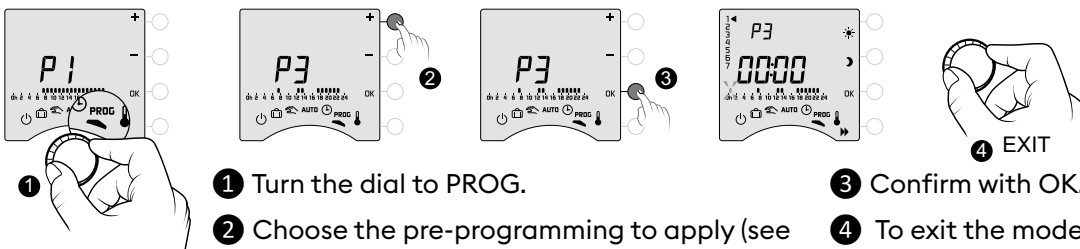
			PROG x7	PROG x1
<b>P1</b>	0,00 7,00 23,00 	Monday -> Sunday	✓	✓
<b>P2</b>	0,00 7,00 8,00 17,00 23,00 	Monday -> Friday + Saturday, Sunday	✓	
<b>P3</b>	0,00 7,00 8,00 12,00 14,00 17,00 23,00 	Monday -> Friday + Saturday, Sunday	✓	
<b>P4</b>	0,00 7,00 8,00 17,00 23,00 	Monday, Tuesday, Thursday, Friday + Wednesday, Saturday, Sunday	✓	
<b>P5</b>	0,00 	Monday -> Sunday	✓	✓



If the screen displays "OFF", your product is connected to the Tydom app (menu 1-10 = 1).

You cannot programme from the Tybox  
**WARNING:** the heating is set to Frost Protection when in this position.

### 7.1 Quick programming



1 Turn the dial to PROG.

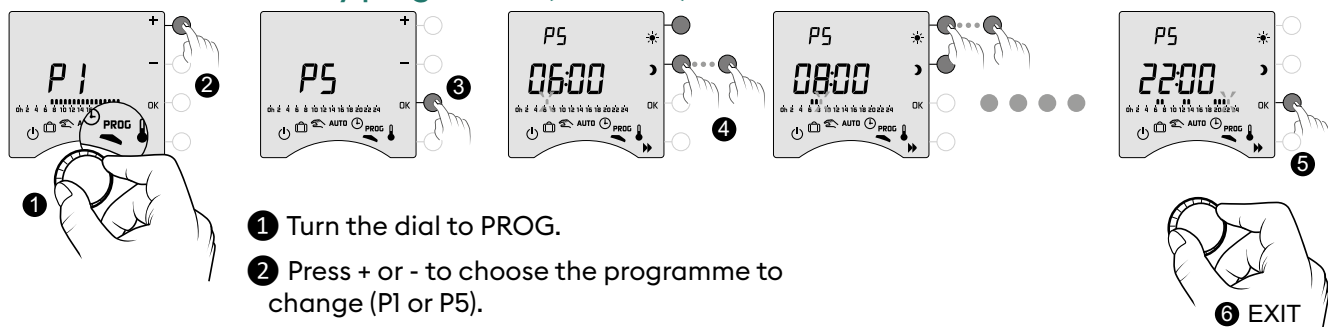
2 Choose the pre-programming to apply (see table) by successively pressing + or -.

3 Confirm with OK.

4 To exit the mode, turn the dial.

### 7.2 Customising a programme

#### How to set a daily programme (PROG x1)



1 Turn the dial to PROG.

2 Press + or - to choose the programme to change (P1 or P5).

3 Confirm with OK.  
The programme profile flashes.

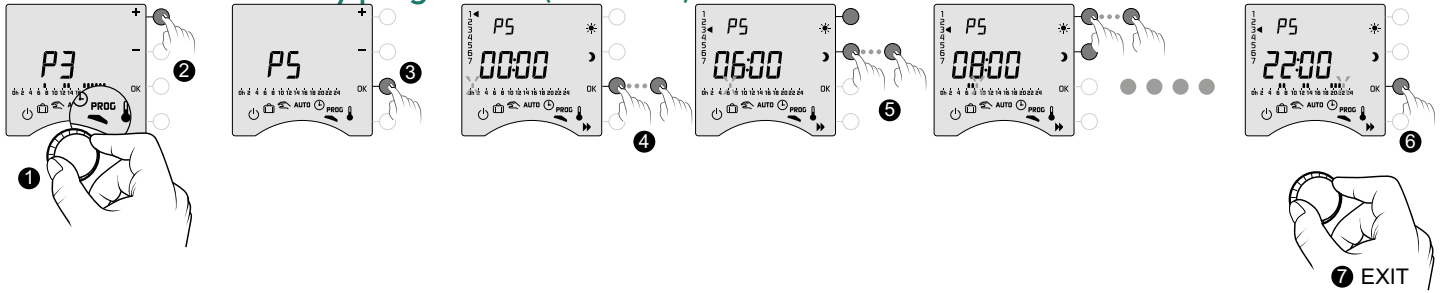
4 Create your programme by pressing ☾ for Economy periods and ☀ for Comfort periods.

You can check your programme by pressing the ▶ button (see § Programme verification).

5 Confirm with OK.

6 To exit the mode, turn the dial.

## How to set a daily programme (PROG x7)

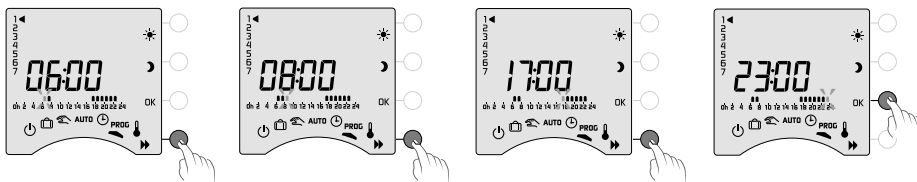


- 1 Turn the dial to PROG.
- 2 Press + or - to choose the programme to change.
- 3 Confirm with OK.  
The programme profile flashes.
- 4 Press OK to choose the day to change.  
Programming begins on day 1 (Monday) and at 12 a.m.  
1: Monday, ... 7: Sunday,
- 5 Create your programme by pressing for Economy periods and for Comfort periods.  
You can check your programme by pressing the button (see § Programme verification).
- 6 Confirm with OK and go to programming for the next day  
**OR** copy the programme to the next day (COPY function) by pressing OK for 3 seconds.  
Repeat for each day of the week.
- 7 To exit the mode, turn the dial.

### COPY function

Used to copy the programme from one day to the next.  
To do this, press and hold the OK (6) button for 3 seconds.  
The arrow will move to the next day, ensuring the copy has occurred.

## 7.3 Programme verification



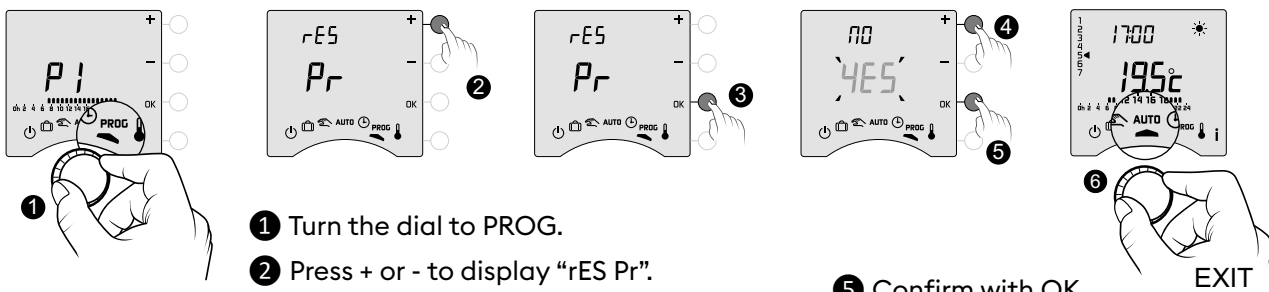
Once your programme has been changed, you can check it by successively pressing the button .

If it suits you, confirm with OK and go to the next day (if PROGx7).

To exit the mode, turn the selector dial.

## 7.4 Return to initial programme

You want to reset to the initial programmes.



- 1 Turn the dial to PROG.
- 2 Press + or - to display "rES Pr".
- 3 Confirm with OK.
- 4 Press + or - to make "YES" flash.
- 5 Confirm with OK.
- 6 To exit the mode, turn the dial.



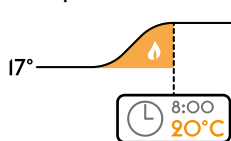
## 11. Pre-heat function

When changing from Economy to Comfort temperature in AUTO mode, your thermostat will anticipate the rise in temperature so that it reaches the right temperature at the scheduled time.


Example (see opposite): 6:30 am, Economy period, currently pre-heating to reach the temperature of 20°C at 8:00 am.

The pre-heating function's speed and accuracy is based on the heater type used and its heating inertia.

The pre-heat function must be activated on the device which you want to use timed heating on.



20° - either on the Tybox transmitter (menu 1-03 = 1).

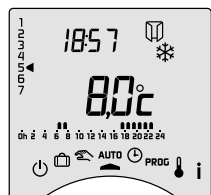
Pre-heat in progress is shown by the flashing  symbol and the Comfort signal.

- or directly on the Tydom app (settings menu).


In this case, Pre-heat is no longer shown on the Tybox screen (menu 1-10 = 1).



## 12. Open window detection



You have linked an opening detector to your installation.

If there's an open window, the screen shows the symbol  in the Off, Absence, Manual and AUTO modes.

The heating will switch to Frost protection within 10 seconds (except in Off mode).

## 13. Operation in connected mode with the Tydom app

### 13.1 Programming via the Tydom app (menu 1-10 = 1).

Certain functions will no longer be available on the Tybox.

Features	Via the Tydom app	On the Tybox
Current day	Yes	Unavailable (*)
Setting the temperatures	Yes (temperatures programmed in the app: special events, overrides, scenario)	Only Frost protection
Time and date setting	Automatic settings	Unavailable (*)
Pre-heat function	Yes	Unavailable
Absence mode	Yes	Mode available but without setting the return date

(\*): The Tybox screen displays "OFF".

### 13.2 Programming via the Tybox (menu 1-10 = 0).

All functions are available on the Tybox.

Only overrides, absence and off modes can be controlled via the Tydom app.

Features	On the Tybox	Via the Tydom app
Current day	All functions	Controls overrides, absence and off modes. Make sure there is no programme in the Tydom app.
Setting the temperatures		
Time and date setting		
Pre-heat function		
Absence mode		
Off mode		

## 14. Troubleshooting

### 14.1 What the receiver LEDs mean

Signal type	Diagnosis/Solutions
The <b>GREEN</b> light is constantly on	Power supply is on.
The <b>RED</b> light is constantly on	The relay is closed. The receiver is requesting heat.
The <b>RED</b> LED is slowly flashing	The receiver is in association mode, ready to be linked. Please refer to the "Associating to the Tydom app" or "Association with an opening detector" or "Unpairing/re-associating the receiver with the transmitter" chapters.
The <b>GREEN</b> LED is flashing	The receiver isn't linked. Before you link it, make sure it is in the "1 flash" mode. Please refer to the "Unpairing/re-associating the receiver with the transmitter" chapter.
Both LEDs are flashing simultaneously.	No transmissions have been received from the transmitter for 1 hour. The receiver is operating in <b>safe mode (*)</b> . Turn the transmitter on by pressing a button or turning the dial. The scrolling display appears. If the problem persists, make sure that the transmitter is not too far away and that you have followed the mounting/placement instructions properly.

#### (\*) Operation in safe mode:

- When switching to safe mode, if the receiver control was off, it remains off otherwise it will switch to emergency Frost protection.
- In this mode, pressing the button authorises a manual override.

3 control types are available and are shown by the flashing LEDs:

- 1 flash: Off,
- 2 flashes: Emergency frost protection (heating 15% of the time),
- 3 flashes: Emergency Comfort (heating 75% of the time), 24-hour timer.

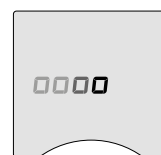
You can cycle through the control types by briefly pressing the button.

### 14.2 Signals on the transmitter


#### - The screen shows scrolling.

You have just turned on your Tybox, please wait.

If the scrolling lasts longer than 5 seconds, check the receiver is powered up or not too far away from the transmitter (radio range).



#### - The screen shows the following faults:

If Def9 and Def13, the  symbol appears.

Faults can be viewed by pressing the **i** button or after turning on the transmitter.

Fault type	Diagnosis	Solution
dEF 00	Your Tybox transmitter is not linked with a heating receiver.	Associate the transmitter with a heating receiver. Please refer to the "Unpairing/re-associating the receiver with the transmitter" chapter.
dEF 09	One-off radio fault during a radio signal (turning on, sending a command).	It will disappear the next time the transmitter turns on if the radio link is functional again.

dEF 13	<p>Radio fault has been showing for over an hour.</p> <ul style="list-style-type: none"> <li>- The receiver has broken down or has no power to it.</li> <li>- The transmitter is too far from the receiver.</li> <li>- You're using a repeater (booster) which may be broken or has no power supply to it.</li> </ul>	<ul style="list-style-type: none"> <li>- Check the power supply to your receiver.</li> <li>- Move the transmitter nearer to the receiver and/or test the radio transmission quality. If needed, add a booster.</li> <li>- Check the repeater (booster) has power to it.</li> </ul>
dEF 21	Your Tybox transmitter is in "low battery" safety mode.	Change your Tybox batteries as soon as possible.

### 14.3 Changing batteries

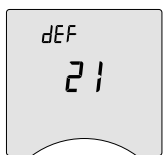
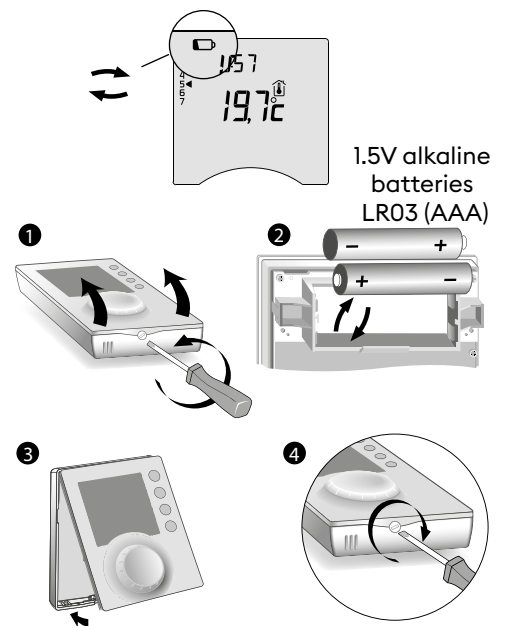
• **The symbol  appears.**

You have approximately 1 month to replace the batteries (either two LR03 or AAA 1.5 V alkaline batteries).

**WARNING:** make sure you insert the batteries facing the right way and that they are the right type (no lithium batteries).

You have 30 seconds to change the batteries before the time setting is lost (in this case, you will need to reset the date and time).

The configuration and programming are stored in case the power is off for a long time.



• **The display shows dEF21.**

You have passed the 1 month limit for low batteries. You **MUST** change the batteries in your device.

### 14.4 Frequently Asked Questions (FAQ)

• **The thermostat is on despite the programme not calling for it.**

You must have turned on the pre-heat function. If so, then it is normal for your thermostat to anticipate the temperature rise and it has started pre-heating to get to the Comfort temperature at the desired time (see § Pre-heat function).

• **The thermostat turns off though the requested temperature has not yet been reached.**

Your thermostat uses a kind of control that anticipates the inertia in temperature variations in order to calculate energy needs as accurately as possible and provide maximum comfort. On the other hand, anticipating a drop in temperature, the heating may turn on once the desired temperature has been reached.

**The information shown on the screen (setpoint, current mode, flame status or the "Window open" symbol) is not up to date.**

Your Tybox updates information only when it turns on.

Depending on dial position, it goes into standby after a period of 30s to 4mn without user input.

• **My thermostat does not display the time**

The time display is not available in online mode (menu 1-10 = 1).