

User Manual  
Robot Vacuum and Mop  
Manuel d'utilisation  
Robot aspirateur et vadrouille

## Dear users:

### Chers utilisateurs :

Thank you for purchasing Narwal products. To access comprehensive support from Narwal, you are recommended to read carefully the manual and illustrations before using the product. Please keep the manual properly.

The manual may be updated from time to time based on product updates and user feedback. Please scan the QR code below to browse the official website and view the latest version.

In case of any problem in using the product, please contact Narwal after-sales customer service through the following ways:

Customer service email:

Merci d'avoir acheté les produits Narwal. Pour bénéficier d'un support complet de la part de Narwal, nous vous recommandons de lire attentivement le manuel et les illustrations avant d'utiliser le produit. Veuillez conserver le manuel correctement.

Le manuel peut être mis à jour de temps à autre en fonction des mises à jour du produit et des retours des utilisateurs. Veuillez scanner le code QR ci-dessous pour accéder au site Web officiel et consulter la dernière version.

En cas de problème lors de l'utilisation du produit, veuillez contacter le service client après-vente Narwal par les moyens suivants :

Email du service client :

support.na@global.narwal.com(North America)

support.kr@global.narwal.com(South Korea)

support.jp@global.narwal.com(Japan)

\*For other countries, please refer to the after-sales contact information provided by your local vendors.

\*Pour les autres pays, veuillez vous référer aux informations de contact après-vente fournies par vos revendeurs locaux. Nous vous souhaitons une agréable expérience !

We wish you a pleasant experience!  
Nous vous souhaitons une bonne expérience !



WWW.NARWAL.COM



Electronic version of the user manual  
Elektronische Version des Benutzerhandbuchs  
Versione elettronica del manuale d'uso  
Version électronique du Manuel d'utilisateur  
Versión electrónica del manual de usuario  
Электронная версия руководства пользователя  
전자 설명서  
電子說明書  
電子說明書  
Wersja elektroniczna instrukcji obsługi  
Kullanım kılavuzunun elektronik versiyonu  
Bản điện tử sách hướng dẫn sử dụng  
إصدار إلكتروني للمニュアル  
גרסה אלקטרונית של המדריך למשתמש  
Version électronique du Manuel d'utilisateur  
النسخة الإلكترونية من دليل المستخدم

# CONTENTS CONTENU

en

02

es

06

ko

10

ja

14

fr-ca

18

zh-tw

22

**Regional Availability and Compatibility**

Based on user experience consideration and relevant legal and compliant requirements, Narwal products normally sold by Narwal (and its authorized retailers) are only available for use and after-sales service support in the country or region in which they were originally sold. If a product is shipped to any other countries or regions, you might not be able to use the Narwal App to bind the product or perform relevant operations. We recommend that you purchase the local version of the Narwal product from Narwal or its authorized retailers in order to obtain the best product use and service experience.

For avoidance of doubt, Narwal products sold by Narwal (and its authorized retailers) in the PRC are only available for use and after-sales service support in the PRC (for this purpose, excluding Hong Kong, Macao and Taiwan).

# 1 Product At A Glance

## 1.1 Check List

### Main parts



Robot × 1  
(including dust bag × 1, mopping module × 2)



Base station × 1  
(including cleaning base × 1, cleaning tray × 1,  
clean water tank × 1, dirty water tank × 1)

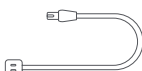
### Accessories



Side brush × 2  
(Accessory)



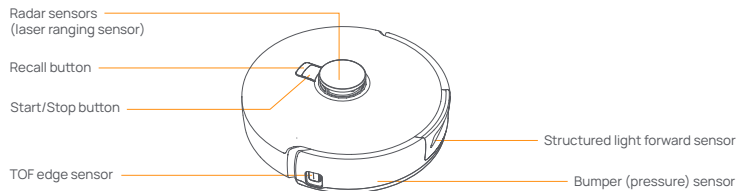
Dust bin × 1  
(Accessory)



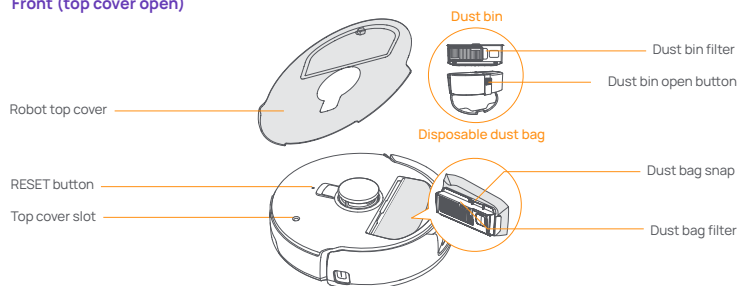
Base station power cord × 1

## 1.2 Robot Accessory

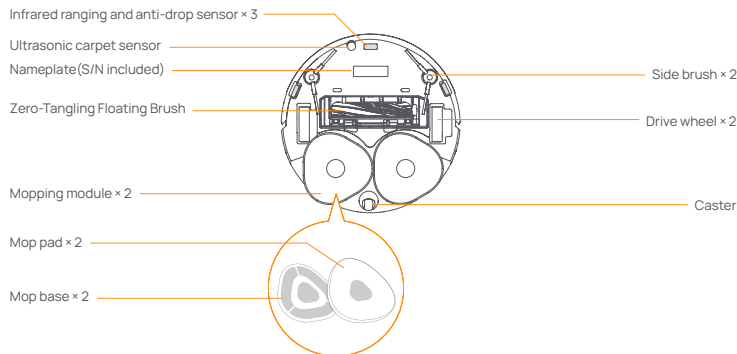
### Front (top cover closed)



### Front (top cover open)

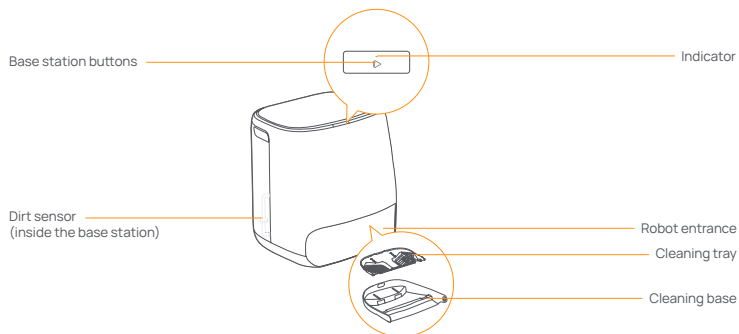


### Robot bottom



### 1.3 Base station

#### Front (lid closed)



#### Front (lid open)



#### Back



### 1.4 Buttons and indicators

#### Robot buttons

Button	Action	Function
Start/Stop	Short press	Start/pause/resume the current task
	Press and hold for 2s	Power on/off
Recall	Short press	Return to the base station
	Press and hold for 2s	Turn On/Off Child Lock
	Short press	Enter the pairing mode
Reset	Press and hold for 5s	Unbind the account and clear user data
	Press and hold for 10s	Restore factory settings

#### Base station buttons

Button	Action	Function
	Short press	Start/pause/resume the current task
	Double click	Start/cancel mop washing
	Press and hold for 2s	End current task
	Press and hold for 10s	Enter/exit the pairing mode
	Short press for 5 consecutive times	Refill/discharge self-check

#### Base station indicators

Indicator	Meaning
Off	Standby/drying/disinfection underway
Steady	Task underway (cleaning/mapping/mop washing/recalling)
Slow flashing	Pairing/updating/refill/discharge self-check underway
Fast flashing	Error/disconnected

## 2. Get Ready Before Use

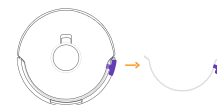
#### (1) Install the side brushes

Press side brushes into the slots as indicated by color until they click into place.



#### (2) Remove the anti-collision foam

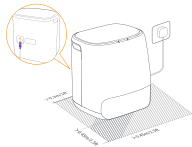
Open the robot top cover and remove the anti-collision foam.



### (3) Place the base station

Plug the power cord into the socket on the back of the base station and connect it to a power outlet, and leave an open space of at least 0.45m in front of the base station for the robot to enter and leave the base station.

Note: If the base station is placed tilted or there are table legs, curtains, and ornaments around, the robot's obstacle avoidance function may be triggered, affecting its entry and exit.



### (5) Add clean water

Before mopping, add water to the clean water tank for mop washing.

- Open the base station lid. Take out the clean water tank, snap it open and fill it with clean water.
- Snap the tank shut and put the water tank back into the base station.

Note: DO NOT add any third-party detergents or disinfectants into the clean water tank to avoid product damage.



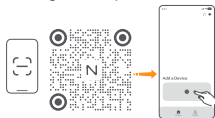
### (7) Connect and bind the robot in the App

Download the Narwal App and follow the instructions for connecting and binding the robot.

Note:

1. In the App device page, tap "Settings" > "Device" and then press hold the "Restart Robot" for 10s to turn on/off the power-saving mode.

—The power-saving mode is only available in North America.



## 3. How to Use

Before using the robot, please make sure you have finished the installation and base station setup in Chapter 2.

### 3.1 Organize the home environment

### (4) Add floor cleaning tablet

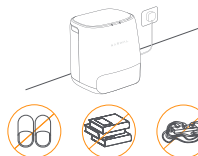
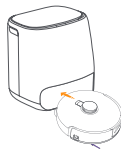
Add a floor cleaning tablet to the clean water tank.

Note: Cleaning Tablet should be purchased separately.



### (6) Boot settings

Push the robot into the base station with side brushes facing outward. The base station will beep once to indicate that charging is successful and the robot will turn itself on and prompt a voice message.



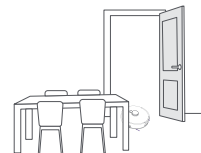
A. Put away the clutter on the floor, e.g. scattered cables, rags, slippers, clothes, and books; slippers, clothes, and books.



C. Leave other doors closed and install the fence to prevent the robot from entering elevated or low areas.



E. DO NOT stand in front of the robot, on the threshold, or in narrow aisles to avoid omission.



B. Open the doors of the rooms to be cleaned and arrange the furniture to leave as much space as possible for cleaning.



D. The maximum obstacle crossing height is 20mm and the robot cannot enter rooms with a threshold height of over 20mm. You can purchase Narwal Threshold Ramp to help the robot climb over obstacles.

## 3.2 Mapping

Before cleaning a new home, the robot needs to explore the environment and create a map. Before first-time cleaning, you can trigger mapping by short pressing the [Start/Stop] button on the base station or tapping [Start Mapping] in the App.

Note:

1. Once a map is created, it can be edited in the App.
2. Please do not move the base station after a map is created, or you have to restart mapping. If large furniture in your home is rearranged, it is recommended to create a new map.

## 3.3 Cleaning

### Select cleaning modes

The product comes with four built-in cleaning modes: Vacuum, Mop, Vacuum and Mop, and Vacuum then Mop. You can select and adjust parameters like cleaning cycles, suction, and mop humidity for each mode in the App.

Note: Before any task that includes vacuuming, please make sure that the robot top cover is proper in place to avoid any vacuuming error.




### Set Freo Mind

The Freo Mind is an intelligent cleaning assistant. You can select the cleaning mode and then activate Freo Mind in the App. When the Freo Mind is enabled, the robot can:

- set cleaning parameters based on the environmental data collected by sensors;
- enhance edge-to-edge cleaning.

## Start cleaning task





You can start the robot for cleaning in three ways:

- Tap  [Start Cleaning] in the App;
- Short press the  [Start/Stop] button on the robot to start cleaning. The robot will activate the Vacuum Mode by default;
- Short press the  [Start/Stop] button on the base station to start cleaning. The robot will activate the Vacuum and Mop Mode by default;

Note: You can adjust the default cleaning mode for pressing buttons on the base station and set more cleaning parameters in the App.

## Pause/resume the current task

You can pause/resume the current task in three ways:

- Tap  Pause/  Resume button in the App;
- Short press the  Start/Stop button on the robot;
- Short press the  Start/Stop button on the base station.

## Mop washing



If the robot is set for multiple mopping runs or the area for cleaning is large, the robot will automatically return to the base station for mop washing.

The number of mopping runs and returns can be modified in the App before cleaning starts, and cannot be modified during the current cleaning task.

## End current task

The robot will navigate itself back to the base station when cleaning ends. You can view the current cleaning report in the App.



You can manually end the task in the following three ways:

- Press and hold  Finish button for 2s in the App;
- Short press the  Home button on the robot;
- Press and hold the  [Start/Stop] button on the base station for 2s.

## Mop Drying

After the last mopping run, the robot will return to the base station for mop washing and drying. The drying time can be modified in the App.

You can also start mop washing and drying manually in the following two ways:

- Tap  Mop Washing & Drying button in the App;
- Double tap the  [Mop Washing & Drying] button on the base station.

# 4. Parameters

## 4.1 Specifications

Robot (YJCC023)	Base Station (YJCB023)
Dimensions: 350*350*107 mm	Dimensions: 415*370*434 mm
Weight: 4.25 kg	Weight: 8.5 kg
Wireless Connection: 2.4GHz, 802.11b/g/n	Rated input: 100-240V-50-60Hz
Charging time: About 3 hours	Rated power: 60W
Rated voltage (working): 14.4V--- (lithium ion battery, >5000mAh)	Rated output: 20V--- 2.25A
Rated input: 20V--- 2.25A	
<b>Wi-Fi</b>	
Protocol: IEEE 802.11b/g/n	
Frequency Range: 2412~2472MHz	
Max. Transmitter Power (EIRP): ≤20dBm	
<b>Bluetooth</b>	<b>Bluetooth</b>
Protocol: BLE 5.0	Protocol: BLE 5.0
Frequency Range: 2402-2480MHz	Frequency Range: 2402-2480MHz
Max. Transmitter Power (EIRP): ≤10dBm	Max. Transmitter Power (EIRP): ≤10dBm

Battery (Robot)	
Battery Pack Quantity Per Pack:	1 pcs
Battery Type:	Rechargeable Li-ion Battery
Nominal Voltage:	14.4V ---
Quantity of Battery Cells Per Battery Pack:	8 pcs
Rated Capacity, Rated Energy:	5000mAh, 72Wh