



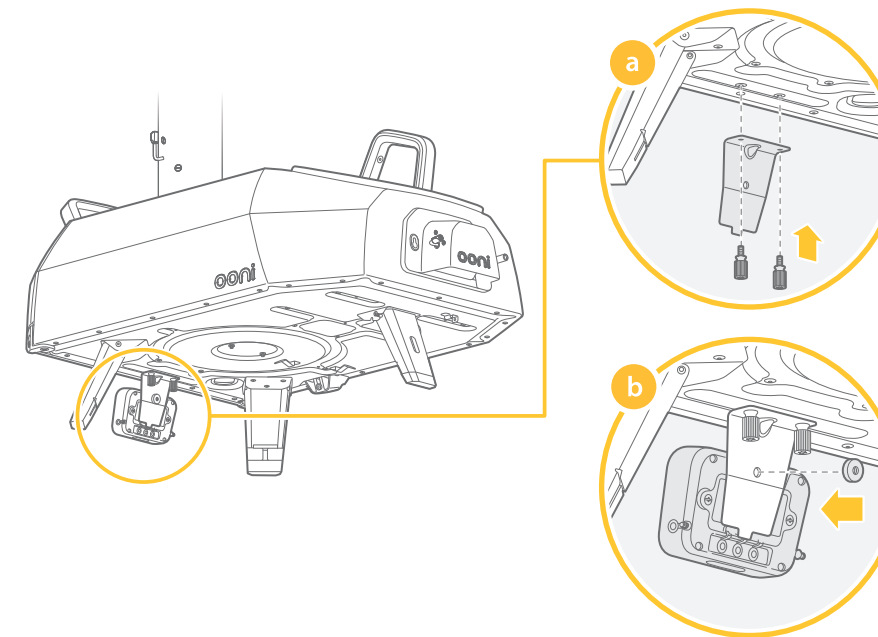
Ooni Connect™ Digital Temperature Hub



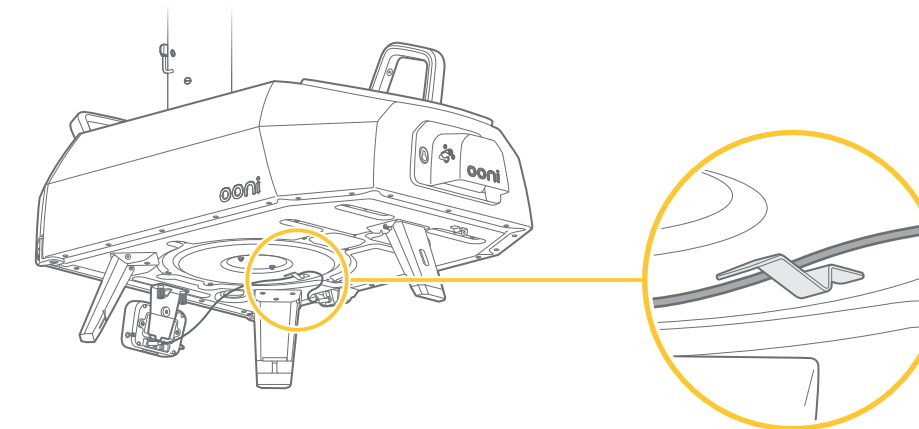
ooni.com/karu-2-pro



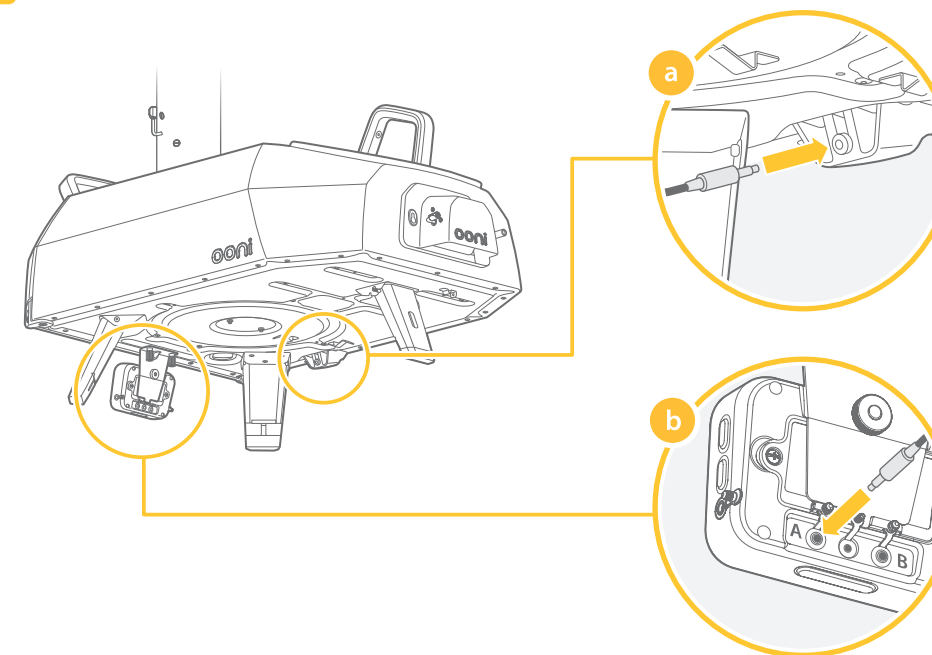
4.1



4.3

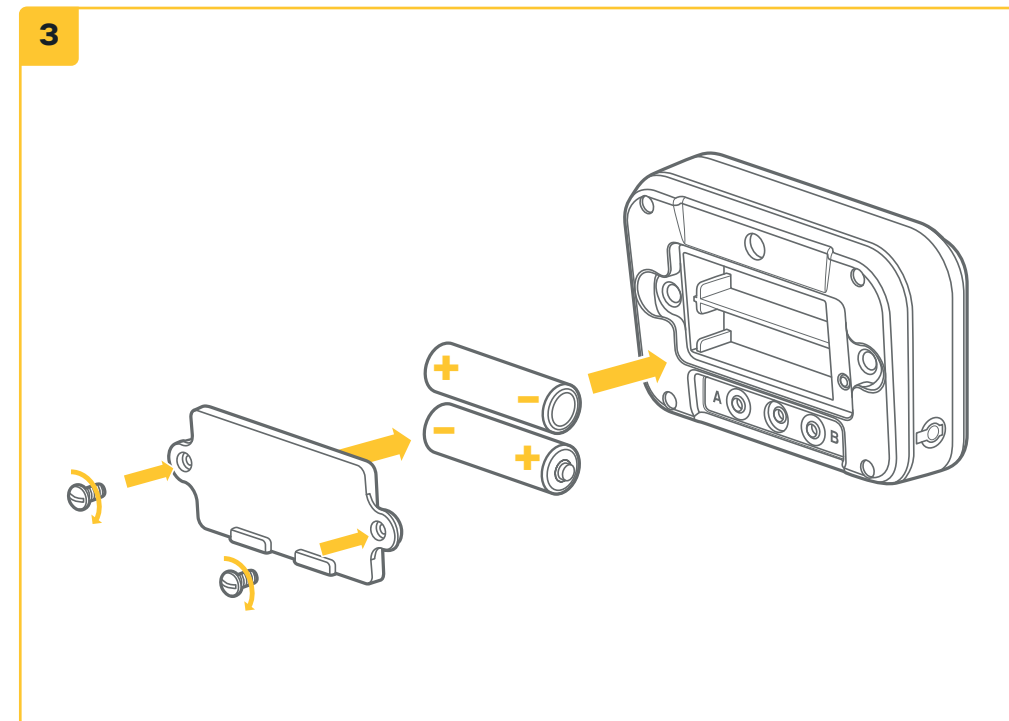
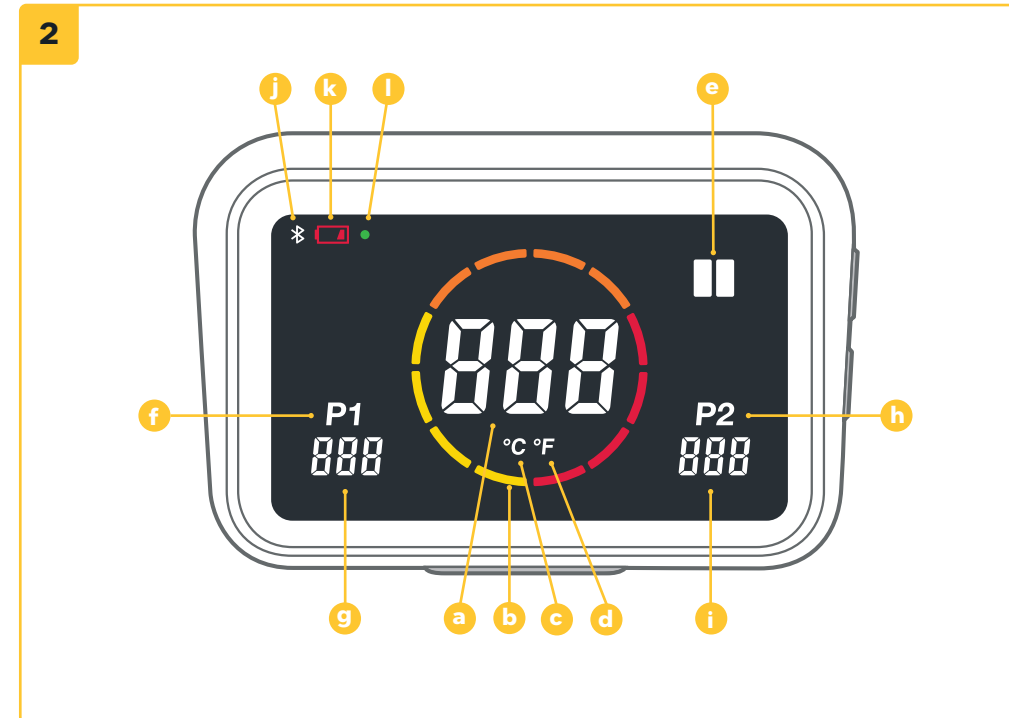
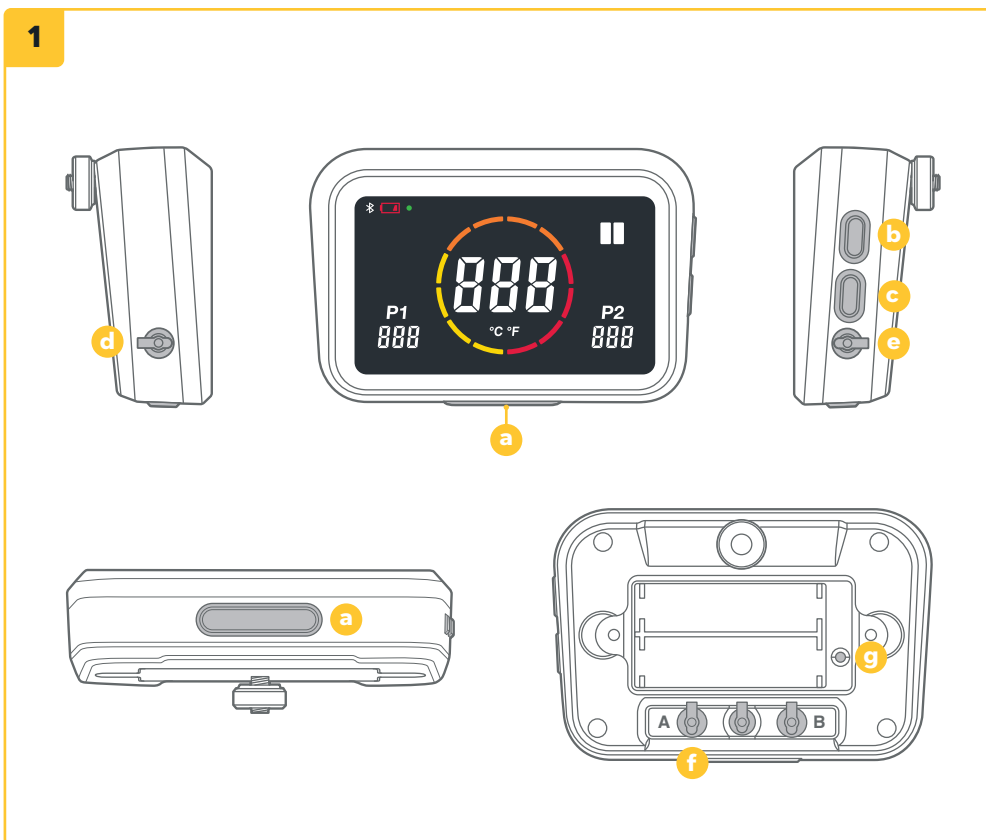
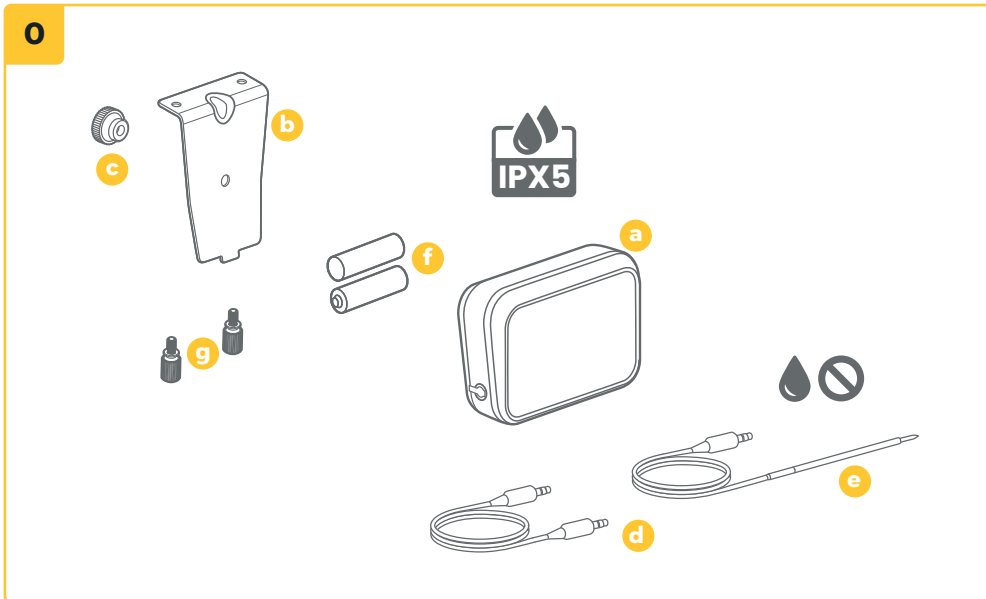


4.2



5.3





All references to "Ooni" in this manual include Ooni Limited and its relevant subsidiaries and holding companies as defined in section 1159 of the Companies Act 2006.

OONI DOES NOT ACCEPT ANY RESPONSIBILITY, LEGAL OR OTHERWISE, FOR THE INCIDENTAL OR CONSEQUENTIAL DAMAGE TO PROPERTY OR PERSONS RESULTING FROM THE USE OF YOUR OONI OVEN WHICH DOES/DID NOT COMPLY WITH ANY OF THE PROVISIONS OF THIS MANUAL.

OONI SHALL IN NO EVENT BE LIABLE FOR ANY SPECIAL, INDIRECT, CONSEQUENTIAL OR OTHER DAMAGES OF ANY NATURE WHATSOEVER IN EXCESS OF THE ORIGINAL PURCHASE PRICE OF YOUR OONI OVEN.

Some states or countries do not allow the exclusion or limitation of incidental or consequential damages, therefore, such limitations or exclusions may not apply to you.

Product Name: Ooni Connect™ Digital Temperature Hub.

Model: UU-C00182

Caution: The user is cautioned that changes or modifications not expressly approved by the party responsible for compliance could void the user's authority to operate the equipment. This device contains licence-exempt transmitter(s)/receiver(s) that comply with Innovation, Science and Economic Development Canada's licence-exempt RSS(s) and Part 15 of the FCC Rules. Operation is subject to the following two conditions:

- (1) This device may not cause interference.
- (2) This device must accept any interference, including interference that may cause undesired operation of the device.

L'émetteur/récepteur exempt de licence contenu dans le présent appareil est conforme aux CNR d'Innovation, Sciences et Développement économique Canada applicables aux appareils radio exempts de licence. L'exploitation est autorisée aux deux conditions suivantes :

- (1) L'appareil ne doit pas produire de brouillage;
- (2) L'appareil doit accepter tout brouillage radioélectrique subi, même si le brouillage est susceptible d'en compromettre le fonctionnement.

NOTE: This equipment has been tested and found to comply with the limits for a Class B digital device, pursuant to Part 15 of the FCC Rules. These limits are designed to provide reasonable protection against harmful interference in a residential installation. This equipment generates, uses and can radiate radio frequency energy and, if not installed and used in accordance with the instructions, may cause harmful interference to radio communications. However, there is no guarantee that interference will not occur in a particular installation.

If this equipment does cause harmful interference to radio or television reception, which can be determined by turning the equipment off and on, the user is encouraged to try to correct the interference by one or more of the following measures:

- Reorient or relocate the receiving antenna.
- Increase the separation between the equipment and receiver.
- Connect the equipment into an outlet on a circuit different from that to which the receiver is connected.
- Consult the dealer or an experienced radio/TV technician for help.

FCC & IC Radiation Exposure Statement:

This equipment complies with FCC and Canada radiation exposure limits set forth for an uncontrolled environment. This equipment should be installed and operated with a minimum distance of 20cm between the radiator and your body.

This transmitter must not be co-located or operating in conjunction with any other antenna or transmitter.

Déclaration d'IC sur l'exposition aux radiations:

Cet équipement est conforme aux limites d'exposition aux radiations définies par le Canada pour des environnements non contrôlés. Cet équipement doit être installé et utilisé à une distance minimum de 20 cm entre l'antenne et votre corps.

Cet émetteur ne doit pas être installé au même endroit ni utilisé avec une autre antenne ou un autre émetteur.

Contents

English.....	1
العربية	8
Dansk.....	16
Deutsch	24
Español.....	32
Français	40
Français Canadien.....	48
עברית	56
Italiano	64
日本語	72
Nederlands	80
Norsk	88
Português	96
Русский	104
Suomi	112
Svenska	120
中文	128



⚠ WARNING

Read the instructions before using the Ooni Connect™ Digital Temperature Hub and retain them for future reference.

Food probes and other accessible parts may be hot and sharp. Keep young children away.

Only use the Ooni Connect™ Digital Temperature Hub as instructed by this manual.

To avoid damage, only mount the Ooni Connect™ Digital Temperature Hub and route the cable(s) to the location(s) instructed in this manual.

The food probes are suitable for use at temperatures of up to 480 °F (250 °C). Do not use at temperatures exceeding this or on open flames.

Do not modify the Ooni Connect™ Digital Temperature Hub.

⚠ CAUTION

Hand wash and dry the food probes before first use.

The food probes are not dishwasher safe.

Do not use chemicals or abrasive detergents to clean the food probes.

Risk of explosion if the battery is replaced by an incorrect type.

The Ooni Connect™ Digital Temperature Hub works with Ooni food probes; other accessories may be inaccurate, not work, or potentially cause damage.

Ooni Connect™ Digital Temperature Hub

Use the Ooni Connect™ Digital Temperature Hub for accurate and immediate temperature measurements in Celsius (°C) or Fahrenheit (°F). Connect the food probe(s) to get the perfect slow roast or seared steak, and connect to the Ooni app to monitor all of this without having to touch your oven.

0. What's in the box

- a. Ooni Connect™ Digital Temperature Hub
- b. Mounting bracket
- c. Thumb nut (comes attached to Hub)
- d. Ambient temperature cable
- e. Food probe
- f. AA Batteries
- g. Mounting Bracket screws

1. Buttons and inputs:

- a. Power button (long press)
°C / °F selector (short press)
- b. Temperature cycle (short press)
Bluetooth activation (long press)
- c. Back-light button
Eco-mode (long press)
Back-light (short press)
- d. Food probe input 1
- e. Food probe input 2 (optional)
- f. Ambient temperature input A
- g. Factory reset button

2. Screen

- a. Main temperature display
- b. Temperature ring
- c. °C indicator
- d. °F indicator
- e. Ambient temperature Indicator
- f. Food probe 1 Indicator
- g. Food probe 1 display
- h. Food probe 2 indicator (optional)
- i. Food probe 2 display (optional)
- j. Bluetooth status indicator
- k. Low battery indicator
- l. Eco mode indicator

3. Install batteries

Remove screws using a screwdriver and remove hatch. Insert 2x AA batteries. Replace hatch and secure screws.

i If you are storing the oven for more than a month, remove the batteries.

4. Set up and assembly

4.1 | Attaching Ooni Connect™ Digital Temperature Hub

- a. Using 2x bracket screws, attach the mounting bracket to the underside of the oven.
- b. Attach the Ooni Connect™ Digital Temperature Hub to the bracket using the thumb nut (comes attached to the Hub).

4.2 | Attaching the ambient temperature cable


- a. Plug ambient temperature cable into the input on the underside of the oven.
- b. Plug the opposite end into the corresponding input on the back of the Ooni Connect™ Digital Temperature Hub.

4.3 | Securing the ambient air temperature cable

Clip the cable to the underside of the oven.

5. Using the Ooni Connect™ Digital Temperature Hub

5.1 | Download the Ooni app



Scan to download the Ooni app

Setting up your Ooni Connect™ Digital Temperature Hub is simple, and the Ooni app will walk you through each step. If you already have the Ooni app, be sure to update to the latest version.

5.2 | Powering On/Off device

- Turn on the device with a short press of the power button.
- Turn off the device with a long press on the power button.

i Turn off your device when not in use to save battery.
The device will automatically switch off after 45 minutes.

5.3 | Setting the Oven ID

After the first power on, you will need to set the Oven ID for your Ooni Connect™ Digital Temperature Hub. Use the Temperature Cycle Button and the Back-Light button to cycle between the Oven ID numbers until you reach the correct one.

The Oven ID for Ooni Karu 2 Pro is 002.

Confirm this Oven ID by pressing the Power Button.

5.4 | Changing the Oven ID

Press and hold the Temperature Cycle Button and Back-light button together for 3 seconds to re-select the Oven ID. Simply update the Oven ID and confirm the selection.

5.5 | Activating Bluetooth pairing

Ensure Bluetooth is enabled on your device. Open the Ooni app and navigate to the Ooni Connect tab.

Press the temperature cycle button on your Ooni Connect™ Digital Temperature Hub for 3 seconds until the Bluetooth status indicator starts flashing. Follow the instructions in the Ooni app to connect your device.

A successful connection will cause the Bluetooth status indicator to stop flashing and remain illuminated.

If the Bluetooth status indicator starts flashing quickly, it means there is a problem with the connection. Try restarting the pairing process if the problem persists.

i If a connection is not made, the Bluetooth will turn off after a short period of time.

5.6 | Reading the food probe

Check that the food probe is plugged into the correct input, and then the temperature will appear on the display.

When using the food probe, remove the cap and then ensure it is inserted into the thickest part of the meat, and make sure to avoid bones or fat.

i The part of the food probe that goes into the meat should not be exposed to temperatures above 250 °C (480 °F).

⚠ WARNING

Before and after use, clean the food probe with hot, soapy water, taking care not to submerge the wire in the water, and dry immediately.

Take care when handling the food probe as it is sharp.

Always wear heat resistant gloves if handling the food probe when it is hot.

Do not use the food probes at temperatures exceeding 450 °C (842 °F).

5.7 | Changing the unit of measurement

Use a short, single press of the power button to cycle between Celsius (°C) and Fahrenheit (°F).

5.8 | Eco Mode

Use a long press of the back-light button to cycle between full brightness and Eco mode. When in Eco mode a short press of any button will fully illuminate the display for a short period of time.

5.9 | Low battery warning

When the batteries are running out, the low battery warning will come on indicating you should change batteries at the next available opportunity.

⚠ WARNING

Always ensure the oven and temperature hub are fully cool before replacing the batteries.

5.10 | High (Hi) or Low (Lo) Temperature

The Ooni Connect™ Digital Temperature Hub is designed to read cooking temperatures between -30 °C (-22 °F) and 550 °C (999 °F) and food probe temperatures between 0°C (32°F) and 100°C (212°F).

i If the temperatures are outside this range, the relevant display will show either Hi or Lo.

6. Care and maintenance

Ooni Connect™ Digital Temperature Hub: Wipe down with a damp cloth and dry immediately.

Food probes: Before and after every use, clean with hot, soapy water, taking care not to submerge the wire in the water and dry immediately. Not dishwasher safe.

Store your Ooni Connect™ Digital Temperature Hub inside and for extended periods without use; remove the battery to prolong battery life and prevent damage.

⚠ Never submerge the Ooni Connect™ Digital Temperature Hub, food probe or wiring in water.

Troubleshooting

Issue	Possible Cause	Solution
My Ooni Connect™ Digital Temperature Hub will not connect to my device.	<ol style="list-style-type: none"> 1. Your device was not one of the most recent connections. 2. Too far away for the device. 3. Unknown reason. 	<ol style="list-style-type: none"> 1. Follow the Bluetooth pairing steps (5.5) to reconnect your device. 2. Ensure you are within 10m (33ft) of the device with a clear line of sight. 3. Try using the factory reset button to remove all existing Bluetooth connections then follow the steps to start again.
Ambient temperature / food probe temperature is not showing on the display	<ol style="list-style-type: none"> 1. The connection could be dirty. 2. The ambient temperature cable is not plugged into the oven. 3. The probes / sensor may be connected to the wrong input. 4. The probe may be damaged. 	<ol style="list-style-type: none"> 1. Remove the probe/sensor from the Ooni Connect™ Digital Temperature Hub and from the oven. Gently clean with a damp cloth. Allow to fully dry and re-insert into the device. 2. Check the ambient temperature cable is plugged into the correct port on the oven. Try removing and re-installing even if it is. 3. Check you have the correct ambient sensor and food probe plugged into the correct input. 4. Try plugging the probe into the other input, if it works there may be a problem with the device, if it doesn't there may be a problem with probe. Contact Ooni support.
Ambient temperature sensor readings aren't accurate.	<ol style="list-style-type: none"> 1. The probes may be connected to the wrong input. 2. The sensor in the oven could be dirty. 3. The calibration settings of the device have been changed. 4. The wrong Oven ID has been selected. 	<ol style="list-style-type: none"> 1. Check you have the correct ambient sensor plugged into the correct input. 2. Ensuring the oven is completely cold, carefully reach inside and gently clean the temperature sensor with a damp cloth. 3. Download the Ooni app and connect to your device. This will update your Digital Temperature Hub. If issues persist, use the factory reset button to return the device to its original calibration. 4. Follow the steps above to change the Oven ID or use the factory reset.
Display is faint or won't turn on at all.	<ol style="list-style-type: none"> 1. The battery is nearly or is already flat. 2. The Ooni Connect™ Digital Temperature Hub is in Eco mode. 	<ol style="list-style-type: none"> 1. Ensuring the oven is completely cold follow the steps outlined in this manual to replace the batteries. 2. A long press of the back-light button will return the product to full brightness.
Ambient temperature reading is high but my food isn't cooking properly.	Stone may not be warm enough. The stone will take longer to preheat than the oven's ambient temperature.	Give your stone more time to preheat. Use an Ooni Digital Infrared Thermometer to get an accurate reading of stone temperature.
My Ooni Connect™ Digital Temperature Hub is not responsive.	There may be an issue with the software associated with the device.	Remove the batteries and reinstall them.
I have a problem that isn't listed here.	You have discovered a new problem!	Contact support.ooni.com



This marking indicates that this product should not be disposed of with other household wastes throughout the EU and UK. To prevent possible harm to the environment or human health from uncontrolled waste disposal, recycle it responsibly to promote the sustainable reuse of material sources. To return your used device, please use the return and collection systems or contact the retailer where this product was purchased. They can take this product for environmentally safe recycling.

You must have a live internet connection in order for the Ooni app to work.

We recommend you update to the latest version of iOS and Android to operate the Ooni app.

Your mobile device must have Bluetooth wireless technology 4.0 support (Bluetooth® wireless technology Low Energy) in order to set up a connection with the appliance. Check your device specification for compatibility.

- BLE 2.4GHz
- 2.4GHz, 2.5mW

The Bluetooth® word mark and logos are registered trademarks owned by Bluetooth SIG, Inc. and any use of such marks by Ooni Limited is under license. Other trademarks and trade names are those of their respective owners.