

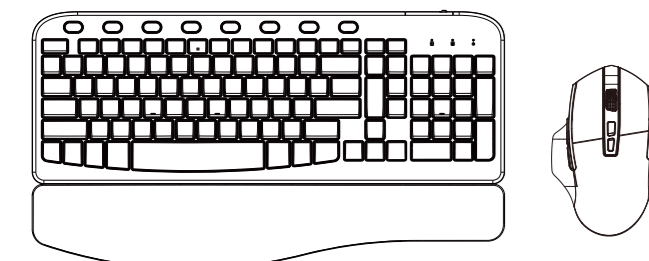
尺寸：105x148mm

材质：100g书纸

工艺：双面四色印刷 折页

### Ergonomic Wireless Combo

2.4G Wireless Keyboard and Mouse Combo



Email: [sabluteservices@outlook.com](mailto:sabluteservices@outlook.com)  
[sablute.com/pages/contact](http://sablute.com/pages/contact)

#### Product Specification

##### Keyboard parameters:

Connectivity	2.4G Wireless Connection
Charging time of Keyboard	6h
Battery capacity	2000mAh
Battery endurance	20h (with backlight)
Operating voltage	3.7V
Connection distance	8-10m
Power Saving	Without action in 60 seconds, the backlight will be out on keyboard

##### Mouse parameters:

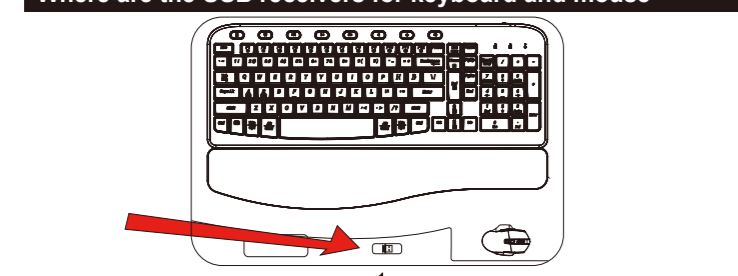
Mouse Battery Capacity	650mAh
Mouse DPI	800-1200-1600-2000
Charging Time of Mouse	3 hours
Working Current(with Backlight)	17 mA
Working Time(with Backlight)	30 hours
Connection Distance	10m

Compatible Systems: Windows XP, Windows 7/8/10/11, Mac OS, iPad OS, IOS, Android

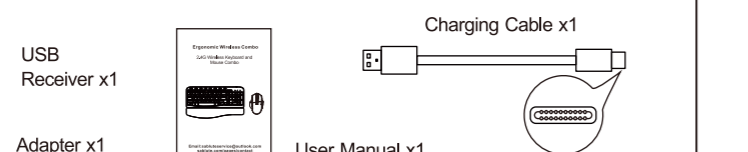
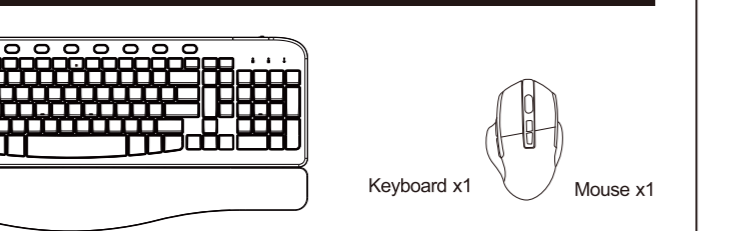
#### Note

- Compatible Systems: All Windows Series, Mac OS, Linux, Chrome OS
- The multimedia keys are for Win 8 and Win 10, for other systems, there may be no function for some combined keys.

#### Where are the USB receivers for keyboard and mouse

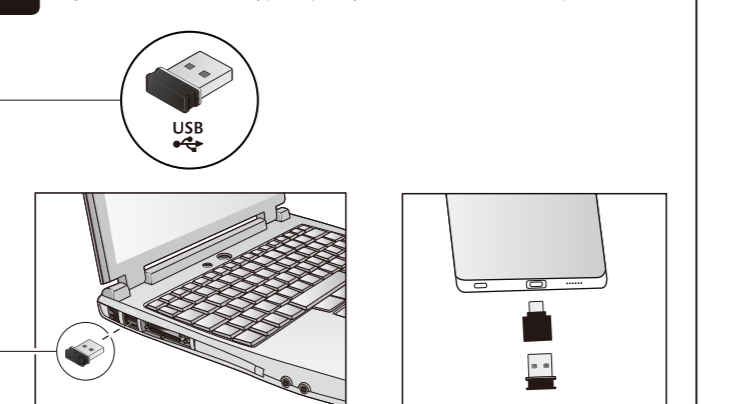


#### You will receive



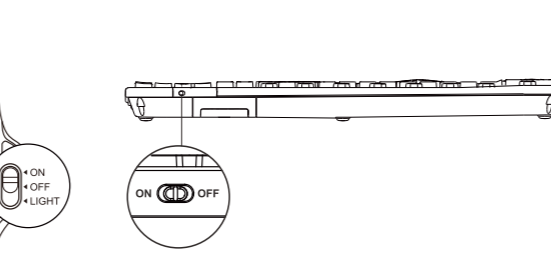
#### How to set up

- Step 1: Please put the USB receiver into your computer. If your device includes Type-C port, you can also use the Adapter.



#### 2

Step 2: Turn on the keyboard and mouse.

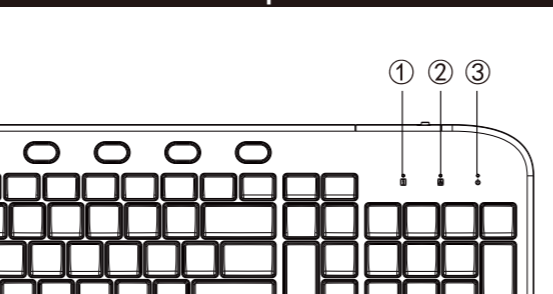


Step 3: The keyboard and mouse will connect to the computer automatically, and no drivers are required.

#### Instruction of the keyboard backlight

- Press and Hold **Fn** key, then press **Del** key to turn on/ turn off backlight
- Press and Hold **Fn** key, then press **Home** key to change backlight color.
- Press and Hold **Fn** key, then press **↑** key to increase backlight brightness
- Press and Hold **Fn** key, then press **↓** key to decrease backlight brightness

#### LED indicators description

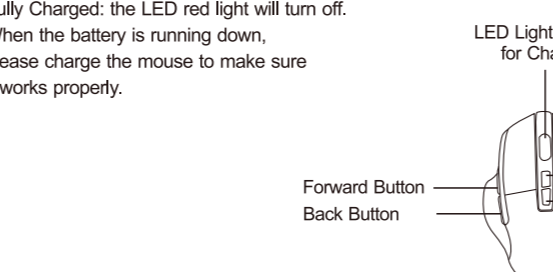


##### LED Indicator of the Keyboard

- NUM LOCK**  
The Num Lock LED light will turn green when Num Lock function is activated.
- CAPS LOCK**  
The Caps Lock LED light will turn green when Caps Lock function is activated.
- Charging Indicator**  
When the battery is running down, the green LED light will flash. When charging, the red light will turn on. When fully charged, the red light will turn off.

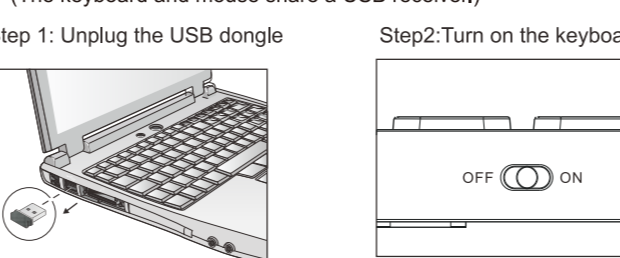
##### LED Indicator of the Mouse

Charging: the LED red light will turn on. Fully Charged: the LED red light will turn off. When the battery is running down, please charge the mouse to make sure it works properly.



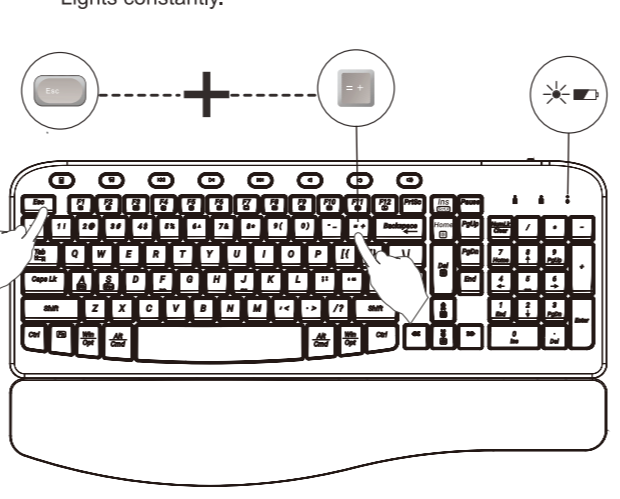
#### How to repair the keyboard to the USB receiver

(The keyboard and mouse share a USB receiver.)

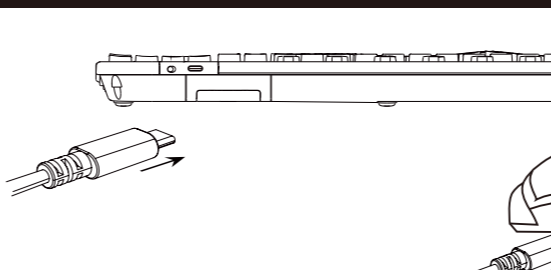


Step 3: Press and hold the "ESC" and the "-" key together for 3-5 seconds.

Step 4: LED indicator for low battery / connection Lights constantly.



#### Instruction for charging



- Charging Troubleshooting
- If the charging indicator light is not on:
    - A: Check if the charging power source is properly connected.
    - B: Inspect the charging port for any looseness.
    - C: Verify if the charging output voltage is at 4.2V.
  - If the charging indicator light is on but the device is not operational:
    - A: Generally, it may need around half an hour of charging. Please ensure that the charging time is sufficient.
    - B: Check if the USB receiver is connected to the keyboard. If not, please reconnect it.

#### Multimedia button description

The functions down below can be realized by combining FN button.

Calculator	Screenshot	Previous song
Play/pause	Next song	Mute
Volume-	Volume+	Light color adjustment
Increase Brightness	Decrease Brightness	Backlight Switch

#### FAQ

<b>FN</b> + <b>A</b> (Win)	Enter the Win system	<b>FN</b> + <b>S</b> (Mac)	Enter the MAC system
<b>FN</b> + <b>F1</b>	Screen brightness decrease	<b>FN</b> + <b>F1</b>	Screen brightness decrease
<b>FN</b> + <b>F2</b>	Screen brightness increase	<b>FN</b> + <b>F2</b>	Screen brightness increase
<b>FN</b> + <b>F3</b>	Convert Window	<b>FN</b> + <b>F3</b>	Convert Window
<b>FN</b> + <b>F4</b>	Search	<b>FN</b> + <b>F4</b>	Search
<b>FN</b> + <b>F5</b>	Microphone	<b>FN</b> + <b>F5</b>	Exhale Siri
<b>FN</b> + <b>F6</b>	Close program	<b>FN</b> + <b>F6</b>	Exit program
<b>FN</b> + <b>F7</b>	My computer	<b>FN</b> + <b>F7</b>	My computer
<b>FN</b> + <b>F8</b>	Lock screen	<b>FN</b> + <b>F8</b>	Lock screen
<b>FN</b> + <b>F9</b>	Select All	<b>FN</b> + <b>F9</b>	Select All
<b>FN</b> + <b>F10</b>	Copy	<b>FN</b> + <b>F10</b>	Copy
<b>FN</b> + <b>F11</b>	Paste	<b>FN</b> + <b>F11</b>	Paste
<b>FN</b> + <b>F12</b>	Shear	<b>FN</b> + <b>F12</b>	Shear

#### FAQ

- Q1: What should I do if the keyboard gets delayed or stuck?  
A1:
  - Please check there is no 2.4GHz device (e.g. router) nearby to interfere with the connection.
  - Please check the keyboard has been fully charged.
  - Please check there is no full metal case that may block the signal.
- Q2: What should I do if the keyboard and mouse cannot be charged?  
A2:
  - Please check whether the charging port is connected. Please try to replace the charging cable.
  - Try to change the USB port, and if the problem can not be solved, please feel free to contact us.
- Q3: What should I do if the backlight stops working?  
A3:
  - Please charge for half an hour and then re-insert the USB.
  - Please try to restart the keyboard and mouse.
- Q4: Where is my USB receiver?  
A4:
  - The USB receiver is placed on top of the keyboard inside the package, please look for it carefully.
  - Please contact us to get the free replacement if you have lost the USB receiver.
- Q5: What should I do if the keyboard can not be connected?  
A5:
  - Switch on the keyboard, press **Fn** + **Del**, the light flashes quickly.
  - Plug the 2.4GHz USB receiver into the computer.
  - Within 10 seconds, put the keyboard at 10 cm from the receiver for pairing.
  - When the light turn off, the keyboard pairing is successful.

#### FAQ

- Q1: What should I do if the keyboard gets delayed or stuck?  
A1:
  - Please check there is no 2.4GHz device (e.g. router) nearby to interfere with the connection.
  - Please check the keyboard has been fully charged.
  - Please check there is no full metal case that may block the signal.
- Q2: What should I do if the keyboard and mouse cannot be charged?  
A2:
  - Please check whether the charging port is connected. Please try to replace the charging cable.
  - Try to change the USB port, and if the problem can not be solved, please feel free to contact us.
- Q3: What should I do if the backlight stops working?  
A3:
  - Please charge for half an hour and then re-insert the USB.
  - Please try to restart the keyboard and mouse.
- Q4: Where is my USB receiver?  
A4:
  - The USB receiver is placed on top of the keyboard inside the package, please look for it carefully.
  - Please contact us to get the free replacement if you have lost the USB receiver.
- Q5: What should I do if the keyboard can not be connected?  
A5:
  - Switch on the keyboard, press **Fn** + **Del**, the light flashes quickly.
  - Plug the 2.4GHz USB receiver into the computer.
  - Within 10 seconds, put the keyboard at 10 cm from the receiver for pairing.
  - When the light turn off, the keyboard pairing is successful.

#### FAQ

- Q1: What should I do if the keyboard gets delayed or stuck?  
A1:
  - Please check there is no 2.4GHz device (e.g. router) nearby to interfere with the connection.
  - Please check the keyboard has been fully charged.
  - Please check there is no full metal case that may block the signal.
- Q2: What should I do if the keyboard and mouse cannot be charged?  
A2:
  - Please check whether the charging port is connected. Please try to replace the charging cable.
  - Try to change the USB port, and if the problem can not be solved, please feel free to contact us.
- Q3: What should I do if the backlight stops working?  
A3:
  - Please charge for half an hour and then re-insert the USB.
  - Please try to restart the keyboard and mouse.
- Q4: Where is my USB receiver?  
A4:
  - The USB receiver is placed on top of the keyboard inside the package, please look for it carefully.
  - Please contact us to get the free replacement if you have lost the USB receiver.
- Q5: What should I do if the keyboard can not be connected?  
A5:
  - Switch on the keyboard, press **Fn** + **Del**, the light flashes quickly.
  - Plug the 2.4GHz USB receiver into the computer.
  - Within 10 seconds, put the keyboard at 10 cm from the receiver for pairing.
  - When the light turn off, the keyboard pairing is successful.

#### Customer service

**Buy on SABLUTE, You will get:**

- 30-Day Money-Back Guarantee
- 90-Day Free Replacement
- Hassle-Free Warranty Without Returning
- Lifetime Customer Support

#### Contact us

For FAQs and more information, please visit:



[sablute.com/pages/contact](http://sablute.com/pages/contact)  
[sabluteservices@outlook.com](mailto:sabluteservices@outlook.com)