

尺寸：105x148mm

材质：100g书纸

工艺：双面四色印刷 折页

Sablute

User Manual

Wireless Keyboard Combo

After-Sales
Email:sabluteservice@outlook.com
Website URL: sablute.com

KM22 Ultra+

Product Specification

Keyboard parameters:

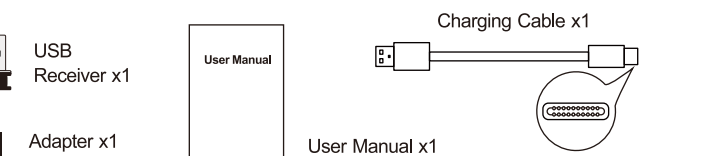
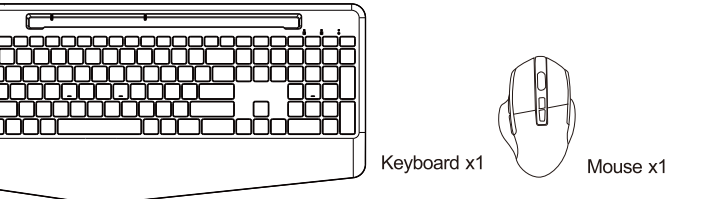
Product size	16.6x8.4x0.67inches
Product weight	1.54pounds
Connectivity	2.4G Wireless Connection
Charging time of Keyboard	6h
Battery capacity	2000mAh
Battery endurance	15h (with backlight)
Operating voltage	3.7V
Connection distance	8~10m
Power Saving	Without action in 90 seconds, the backlight will be out on keyboard

Mouse parameters:

Mouse Battery Capacity	650mAh
Mouse DPI	800/1200/1600/2000
Charging Time of Mouse	3 hours
Working Current(with Backlight)	18mAh
Working Time(with Backlight)	30 hours
Connection Distance	10m
Power Saving	Without action in 90 seconds

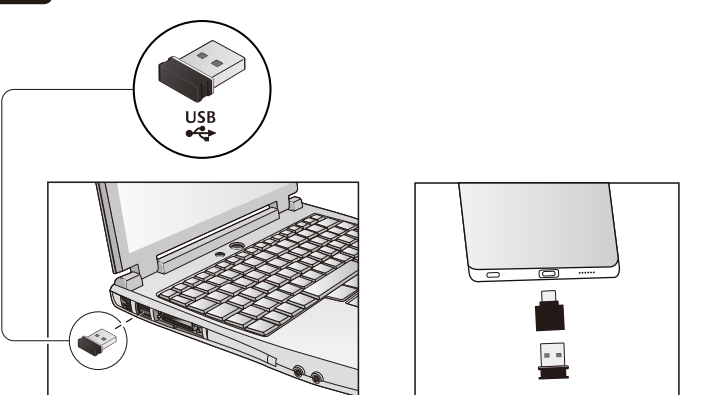
Compatible Systems: Windows XP, Windows 7/8/10/11, Mac OS
iPad OS, IOS, Android

You will receive



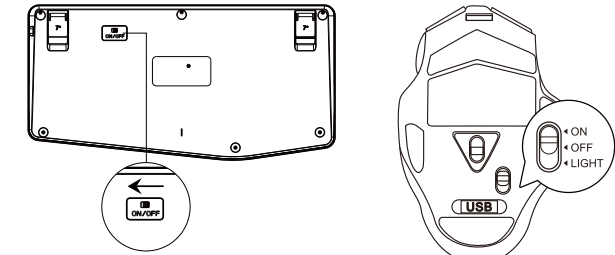
How to set up

1 Step 1: Please put the USB receiver into your computer.
If your device includes Type-C port, you can also use the Adapter.



2

Step 2: Turn on the keyboard and mouse.

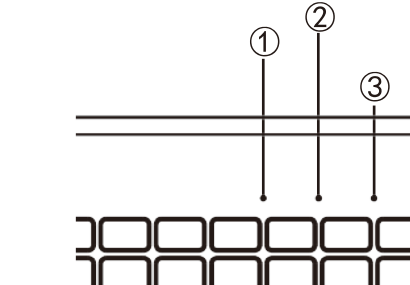


Step 3: The keyboard and mouse will connect to the computer automatically, and no drivers are required.

Instruction of the keyboard backlight

- Press and Hold **Fn** key, then press **Esc** key to turn on/ turn off backlight
- Press and Hold **Fn** key, then press **↑** key to increase backlight brightness
- Press and Hold **Fn** key, then press **↓** key to decrease backlight brightness
- Press and Hold **Fn** key, then press **F1** key to change backlight color.

LED light description

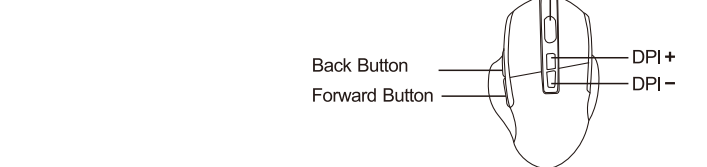


LED Light Indicator of the Keyboard

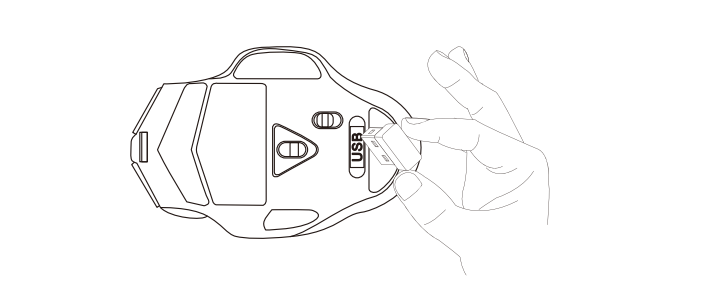
- ① **NUM LOCK**
The Num Lock LED light will turn green when Num Lock function is activated.
- ② **CAPS LOCK**
The Caps Lock LED light will turn green when Caps Lock function is activated.
- ③ **Charging Indicator**
When the battery is running down, the red LED light will flash. When charging, the red light will turn on. When fully charged, the red light will turn off.

LED Light Indicator of the Mouse

Charging: the LED red light will turn on.
Fully Charged: the LED red light will turn off.
When the battery is running down, please charge the mouse to make sure it works properly.

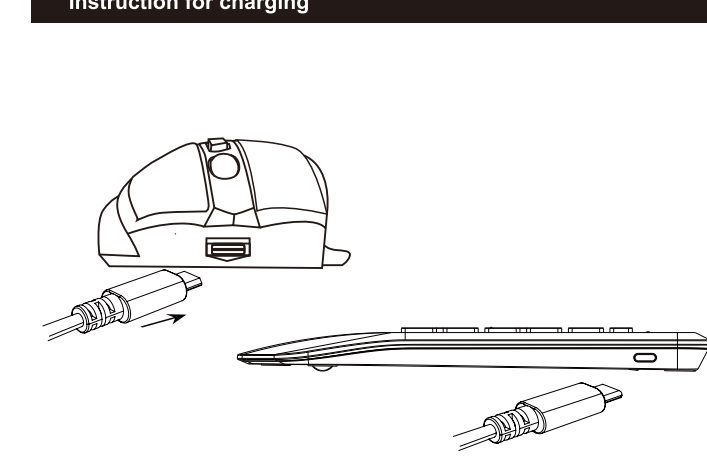


Where are the USB receivers for keyboard and mouse



The Keyboard and the mouse share a USB receiver, which is placed in the internal slot of the mouse.

Instruction for charging



Multimedia button description

The functions down below can be realized by combining FN button.

Esc	Backlight Switch	Decrease Volume
F1	Color Switch	Increase Volume
F2	Homepage	F3 Internet Explorer favorites
F4	Share	F5 Counter
F6	Multi-task	F7 Set up
F8	Search	F9 Music
F10	Pause/Play	F11 Previous Track
F12	Next Track	Mute
Screen Lock	Email	

Operation Center	My Computer
Increase Brightness	Decrease Brightness

FAQ

Q1: What should I do if the keyboard gets delayed or stuck?
A1:

- Please check there is no 2.4GHz device (e.g. router) nearby to interfere with the connection.
- Please check the keyboard has been fully charged.
- Please check there is no full metal case that may block the signal.

Q2: What should I do if the keyboard and mouse cannot be charged?
A2:

- Please check whether the charging port is connected.
- Please try to replace the charging cable.
- Try to change the USB port, and if the problem can not be solved, please feel free to contact us.

Q3: What should I do if the backlight stops working?
A3:

- Please charge for half an hour and then re-insert the USB.
- Please try to restart the keyboard and mouse.

Q4: What should I do if the keyboard can not be connected?
A4:

- Switch on the keyboard, press **↑** + **↓**, the light flashes quickly.
- Plug the 2.4GHz USB receiver into the computer.
- Within 10 seconds, put the keyboard at 10 cm from the receiver for pairing.
- When the light turn off, the keyboard pairing is successful.

Cautions

- 1) Please fully charge the keyboard when you first receive the product as this helps to maintain the battery life.
- 2) Please remove the power supply when charging is complete.
- 3) If the keyboard is not used for a long time, it is recommended to turn off the power switch of the keyboard.
- 4) Please do not expose this product to water because it may cause short-circuit and damage the product.
- 5) Please do not drop or hit this product because shocks may damage the components inside.
- 6) Please do not place this product near the extreme heat or sources of fire.

Customer service

Buy on SABLUTE, You will get:

- 30-Day Money-Back Guarantee
- 90-Day Free Replacement
- Hassle-Free Warranty Without Returning
- Lifetime Customer Support

Contact Us

For FAQs and more information, please visit:

Phone: 1-888-858-1618 (US), Mon-Fri,
9am-6pm (Worktime), 1pm-2pm (Rest)



sablute.com/pages/contact
sabluteservice@outlook.com

Note

The multimedia keys are for Win 8 and Win 10, for other systems, there may be no function for some combined keys. This equipment has been tested and found to comply with the limits for a Class B digital device, pursuant to part 15 of the FCC Rules. These limits are designed to provide reasonable protection against harmful interference in a residential installation. This equipment generates uses and can radiate radio frequency energy and, if not installed and used in accordance with the instructions, may cause harmful interference to radio communications. However, there is no guarantee that interference will not occur in a particular installation. If this equipment does cause harmful interference to radio or television reception, which can be determined by turning the equipment off and on, the user is encouraged to try to correct the interference by one or more of the following measures:

- Reorient or relocate the receiving antenna.
- Increase the separation between the equipment and receiver.
- Connect the equipment into an outlet on a circuit different from that to which the receiver is connected.
- Consult the dealer or an experienced radio/TV technician for help

Changes or modifications not expressly approved by the party responsible for compliance could void the user's authority to operate the equipment. This device complies with Part 15 of the FCC Rules. Operation is subject to the following two conditions:

- (1) This device may not cause harmful interference
- (2) This device must accept any interference received, including interference that may cause undesired operation.