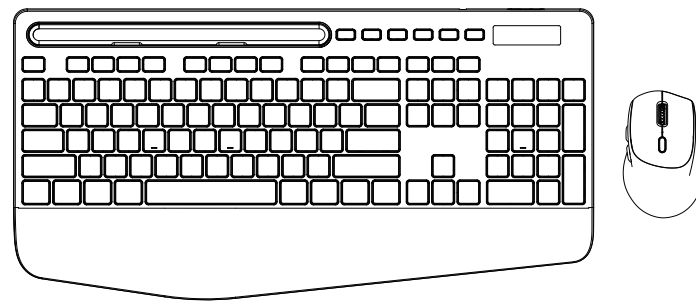


尺寸：105x148mm

材质：100g书纸 展开尺寸：420*148mm

工艺：双面黑白印刷 4折风琴页

Wireless Keyboard and Mouse User Manual



Email: sabluteservices@outlook.com
sablute.com/pages/contact

Phone: 1-888-858-1618 (US)
Mon-Fri
Worktime: 9am-6pm Rest: 1pm-2pm

Product Specification

Keyboard parameters:

Product Size	430x216x36mm
Product Weight	688g±20g
Connectivity	2.4G Wireless Connection
Power	2 AAA battery
Operating Voltage	3V
Connection Distance	8-10M
Power Saving	Enter sleep mode after 10min without action
Working Distance	Within 10 meters
Key Life	10 Millions Strokes

Mouse parameters:

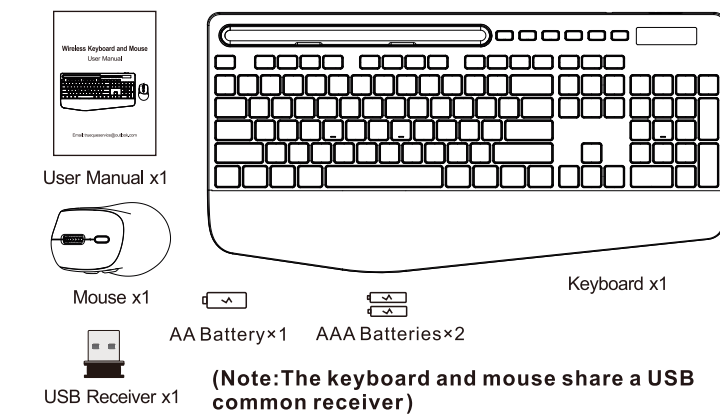
Mouse DPI	800-1200-1600
Power	1 AA battery
Connection Distance	8-10M
Power Saving	Enter sleep mode after 8min without action

NOTE

1. Compatible Systems: All Windows, Mac OS, Linux, Chrome OS.
2. The multimedia keys are for Win 8 and Win 10, for other systems, there may be no function for some combined keys.

- 1 -

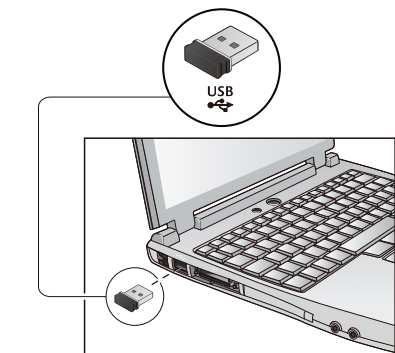
You will receive



(Note: The keyboard and mouse share a USB common receiver)

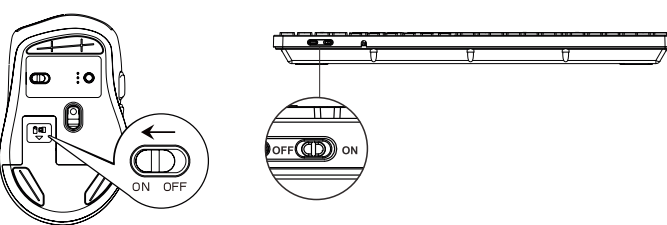
How to set up

- 1 Step 1: Please put the USB receiver into your computer.



- 2 -

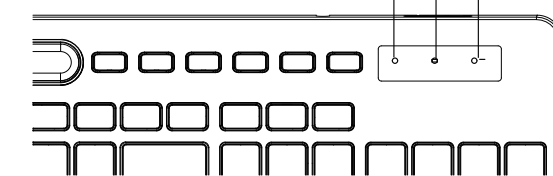
- 2 Step 2: Put batteries in the keyboard and mouse, then turn on the keyboard and mouse.



- 3 Step 3: The keyboard and mouse will automatically connect to the computer, no driver needed.

Indicator Light

LED Indicator of the Keyboard



- ① **Num Lock**
The Num Lock indicator will turn red when Num Lock is activated.
- ② **Caps Lock**
The Caps Lock indicator will turn red when Caps Lock is activated.
- ③ **Low battery warning**
The indicator light will flash slowly when the battery is almost empty.

- 3 -

Multimedia button description

FN + F1	Media	FN + F10	Mail
FN + F2	Volume-	FN + F11	My Computer
FN + F3	Volume+	FN + F12	Favorites
FN + F4	Mute		Previous page of website
FN + F5	Previous Track		Next page of website
FN + F6	Next Track		Refresh
FN + F7	Play/Pause		Search
FN + F8	CD stop		Stop
FN + F9	Homepage		Calculator

- 4 -

FAQ

Q1: The keyboard can not be connected.
A1: Please switch on the keyboard, + . The indicator light remains on. Plug the 2.4GHz USB receiver into the computer. Within 10 seconds, put the keyboard at 10 cm from the receiver for pairing. When the light turns off, the keyboard pairing is successful.

Q2: The mouse can not be connected.
A2: 1. After confirming that the mouse has sufficient power. Press and hold the mouse wheel + right button for 5-8 seconds
2. Connect the USB receiver to your device
3. Release the mouse wheel + right click, wait for the light at the bottom of the mouse to light up normally

Q3: Where is my USB receiver?
A3: The keyboard and the mouse share a USB receiver, which is placed in the internal slot of the mouse.

If you still can't find it, please contact our customer service team at sabluteservices@outlook.com and they will reissue it for you.

- 5 -

FCC Statement

This equipment has been tested and found to comply with the limits for a Class B digital device, pursuant to part 15 of the FCC rules.

These limits are designed to protect reasonably against harmful interference in a residential installation. This equipment generates uses and can radiate radio frequency energy and, if not installed and used following the instructions, may cause harmful interference to radiocommunications. However, there is no guarantee that interference will not occur in a particular installation. If this equipment does cause harmful interference to radio or television reception, which can be determined by turning the equipment off and on, the user is encouraged to try to correct the interference by one or more of the following measures:

- (1) Reorient or relocate the receiving antenna.
- (2) Increase the separation between the equipment and receiver.
- (3) Connect the equipment to an outlet on a circuit different from that to which the receiver is connected.
- (4) Consult the dealer or an experienced radio/TV technician for help changes or modifications not expressly approved by the party responsible for compliance, which could void the user's authority to operate the equipment.

This device complies with Part 15 of the FCC Rules. Operation is subject to the following two conditions:
(1) This device may not cause harmful interference
(2) This device must accept any interference received, including interference that may cause undesired operation.

- 6 -

Customer service

Buy on SABLUTE, You will get:

30-Day Money-Back Guarantee
90-Day Free Replacement
Hassle-Free Warranty Without Returning
Lifetime Customer Support

Contact us

For FAQs and more information, please visit:



sablute.com/pages/contact
sabluteservices@outlook.com