

8-Sheet Cross-Cut Paper and Credit Card Shredder
Déchiquteuse à Coupe Croisée, 8 Feuilles, pour Cartes de
Crédit et Papier
Trituradora de Papel y Tarjetas de Crédito, 8 Hojas,
Corte Cruzado
B0C6LZ8S34, B0C6LXGNY1

Table of Contents

1. Important Safety Instructions	3
2. Symbols Explanation	4
3. Product Description	5
4. Intended Use	6
5. Before First Use	6
6. Assembly and Placement	6
7. Operation	7
7.1 Do not shred	7
7.2 Switch on/off	7
7.3 Operating the slide switch	7
7.4 Shredding	8
7.5 Status indicators	9
8. Emptying the bin	10
9. Cleaning and Maintenance	10
9.1 Cleaning	10
9.2 Oiling procedure	11
9.3 Storage	12
9.4 Maintenance	12
10. FCC – Supplier’s Declaration of Conformity	13
10.1 FCC Compliance Statement	13
10.2 FCC Interference Statement	13
11. Canada IC Notice	13
12. Frequently Asked Questions	14
13. Specifications	17
14. Feedback and Help	17

1. Important Safety Instructions



Read these instructions carefully and retain them for future use. If this product is passed to a third party, then these instructions must be included.

When using electrical products, basic safety precautions should always be followed to reduce the risk of fire, electric shock, and/or injury to persons including the following:

⚠ DANGER Risk of electric shock!

Do not attempt to repair the product yourself. In case of malfunction, repairs are to be conducted by qualified personnel only.

⚠ CAUTION Risk of fire!

Never use any petroleum-based or flammable oils or lubricants in or around the machine as some oils can combust, causing serious injuries.

⚠ CAUTION Risk of injury!

The product has very sharp exposed cutters on the underside. Never touch the underside of the shredding mechanism.

- Always switch the product off and unplug the power supply cord from the socket-outlet when not in use, before cleaning, moving or emptying the paper bin.
- Never dispose of materials that have come into contact with flammable chemicals (for example, nail polish, acetone and gasoline) in the paper bin.
- The ventilation should not be impeded by covering the ventilation openings with items, such as newspapers, tablecloths, curtains, etc.
- The minimum distances of 5 cm around the product is required for sufficient ventilation.
- Never shred large paper clips, metal credit cards, window or insulated envelopes, continuous forms, continuous computer paper, newsprint, bound pages (for example: notepads, checkbooks, magazines, etc.), transparencies, laminated documents, cardboard, any items with adhesives, hard materials or plastic.
- The socket-outlet shall be installed near the product and shall be easily accessible.
- Empty the bin regularly. An overfilled bin might lead to jams.
- The product shall not be exposed to dripping or splashing and no objects filled with liquids, such as vases, shall be placed on the product.
- Regularly check the power plug and power supply cord for damage. If the power supply cord is damaged, it must be replaced by a qualified person in order to avoid a hazard.
- Never try to clean or clear the shredder cutters.
- Never shred beyond the specified sheet capacity. This may result in product damage.
- This product should be used in moderate climates only.

- ▶ This appliance has a polarized plug (one blade is wider than the other). To reduce the risk of electric shock, this plug will fit outlet only one way. If the plug does not fit fully in the outlet, reverse the plug. If it still does not fit, contact a qualified electrician. Do not modify the plug in any way.

SAVE THESE INSTRUCTIONS

2. Symbols Explanation



WARNING: Read and understand all instructions before using this product. Save these instructions for later use, and follow all warnings and instructions marked on the product.



Do not touch the cutters, be aware of the sharp edges.



This equipment is not intended for use by children. Avoid touching the media feed opening with hands, clothing or hair. Unplug this equipment when not in use for an extended period of time. Hazardous moving part is in this equipment, keep body parts away from moving parts.



Read the instructions before use.



Avoid touching the document/media feed opening with the hands.



Avoid clothing touching the document/media feed opening.



Product is not intended for use by children (product is not a toy).



Avoid hair touching the document/media feed opening.



Keep aerosol products away.



Maximum number of sheet capacity.



Marker guide for shredding credit card.

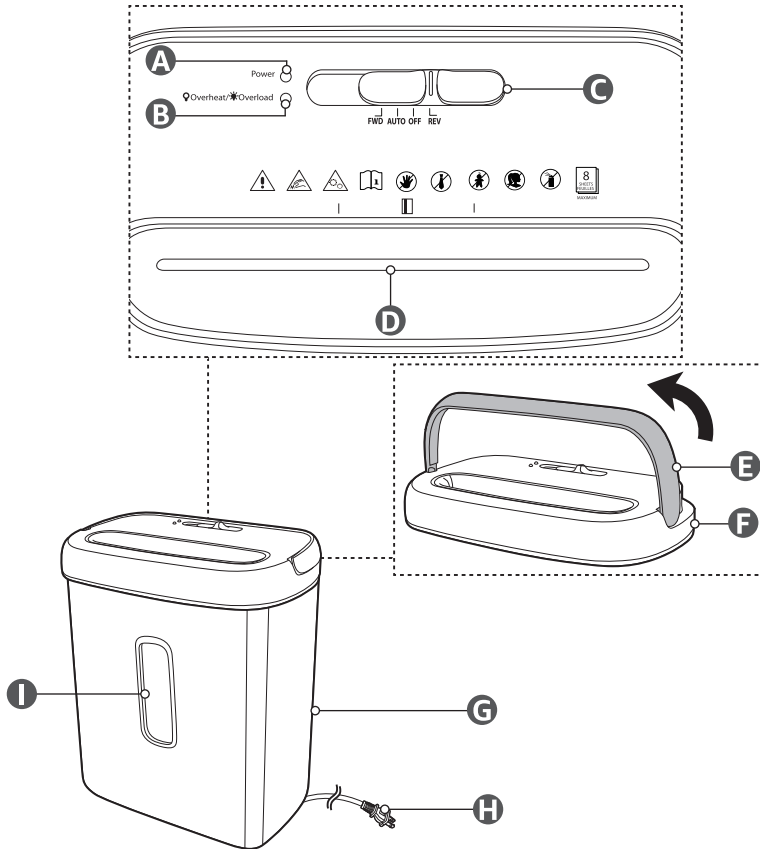


Alternating current (AC).



This product is classified as protection Class II which means the product is equipped with reinforced or double insulation between the main supply circuit and the output voltage or casing. Therefore, it does not require a safety connection to an electrical earth (ground).

3. Product Description



- | | |
|--------------------------------------|-------------------------------|
| A Power indicator | F Shredder |
| B Overheat/Overload indicator | G Waste bin |
| C Slide switch | H Power cord with plug |
| D Feed slot | I Transparent window |
| E Handle | |

4. Intended Use

- ▶ This product is intended for shredding paper, plastic credit cards and similar materials only. Do not shred CDs, DVDs or greeting cards with sound chips or batteries.
- ▶ This product is intended for office and private use.
- ▶ This product is intended to be used in dry indoor areas only.

5. Before First Use

⚠ DANGER Risk of suffocation!

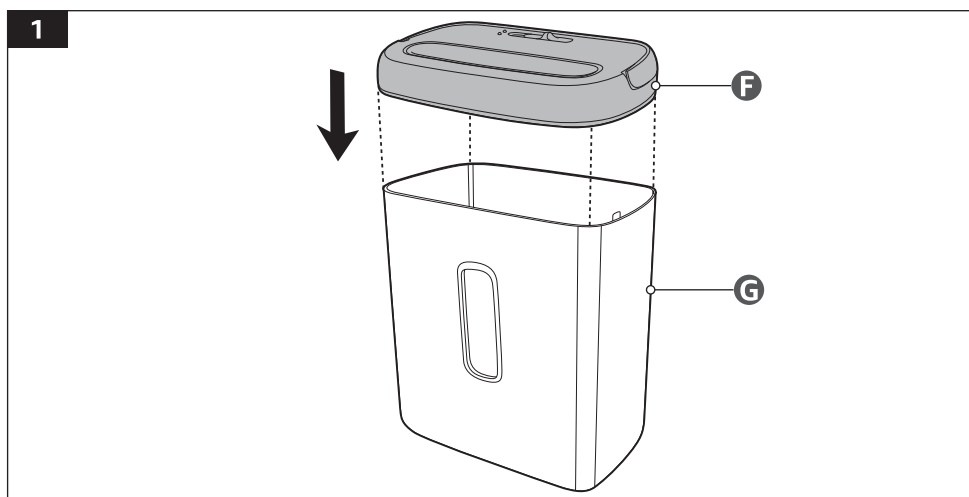
Keep any packaging materials away from children and pets – these materials are a potential source of danger, e.g. suffocation.

- ▶ Remove all the packing materials.
- ▶ Remove and review all components before assembly.
- ▶ Check the product for transport damages.
- ▶ Before connecting the product to the power supply, check that the power supply voltage and current rating corresponds with the power supply details shown on the product rating label.

6. Assembly and Placement

NOTICE Keep a minimum distance of 5 cm between the product and any walls for sufficient ventilation.

Fit the shredder (F) onto the top of the waste bin (G) (Fig. 1).



7. Operation

7.1 Do not shred



Large paper clips,
CDs/DVDs



Window, insulated envelopes
or unopen junk mails



Adhesive materials



Newspaper



Continues forms and
computer paper



Cardboard



Credit card made
with metal



Laminated documents
and magazines

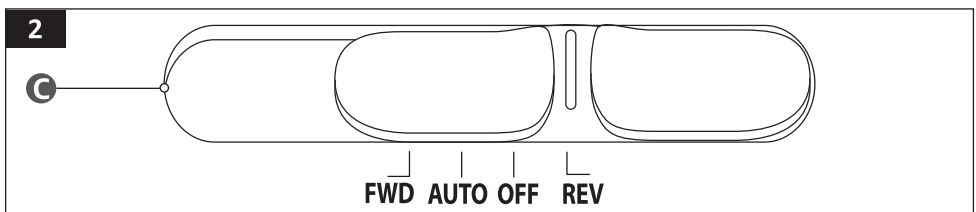
NOTICE

- ▶ Always set the slide switch (C) to the **OFF** position and unplug the product when not in use.
- ▶ Remove any plastic bags from the Waste bin (G). This may cause the product to not operate properly.

7.2 Switch on/off

1. Connect the power plug (H) to a suitable socket-outlet.
2. Switch on the product by setting the slide switch (C) to **FWD/AUTO/REV** position.
3. Switch off the product by setting the slide switch (C) to **OFF** position.

7.3 Operating the slide switch



Set the slide switch (C) to the mode desired.

FWD **Forward:** The **FWD** mode allows to manually start the shredding mode. While in **FWD** mode, the product continues to shred even without any paper or items placed in it.

The **Power** indicator (A) lights up green.

AUTO **Auto:** While in **AUTO** mode, the product does not start until paper or card is inserted into the feed slot (D). Always insert the paper or card as straight as possible. When the paper or card has passed through, the product stops automatically.

The **Power** indicator (A) stays green.

OFF **Off:** While in **OFF** mode, the product is still connected to the power, but is not prepared for shredding.

The **Power** indicator (A) goes off.

REV **Reverse:** The reverse setting can be used to help clear the cutters of material that did not pass through during a paper jam. While in **REV** mode, the product will continue to reverse even without any paper or card placed in it.

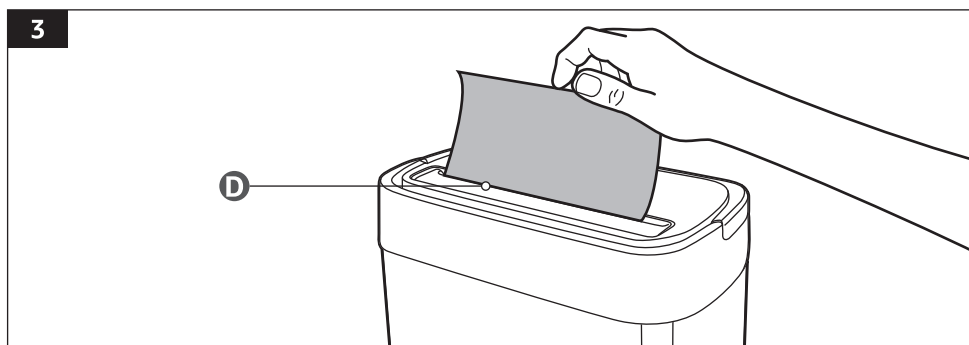
The **Power** indicator (A) stays green.

7.4 Shredding

NOTICE

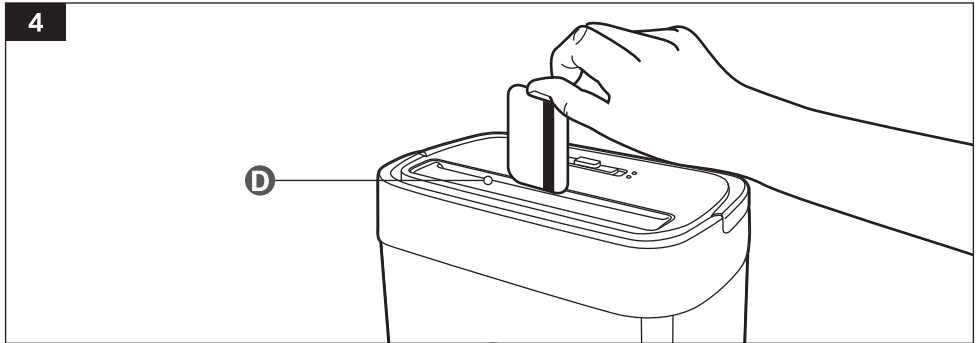
- ▶ A sensor is located in the centre of the feed slot (D). In **AUTO** mode, always insert the item into the centre of the feed slot (D).
- ▶ This product can shred staples and small paper clips. However, it is recommended to remove paper clips whenever possible to extend the lifespan of the product.

7.4.1 Paper



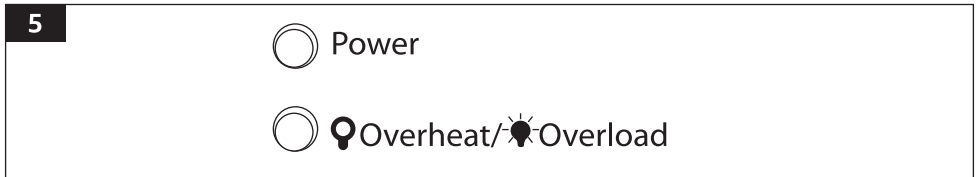
- ▶ Do not exceed the sheet count per pass (8 sheets max.)
- ▶ One folded sheet of paper equates to 2 sheets of paper. Usage of heavier paper, relative humidity and a supply voltage lower than the rated voltage may reduce the shredding capacity of the product.

7.4.2 Credit card



- ▶ Only shred credit cards by inserting them vertically into the centre of the feed slot (D). Release the card when shredding begins.
- ▶ The sensor is located in the centre of the feed slot (D). Do not insert credit cards at either sides.
- ▶ Only feed in one credit card at a time into the product.

7.5 Status indicators



Power

Power indicator goes off when the slide switch (C) is set to **OFF**.

When set in other modes and the product is on standby, the indicator lights up green.

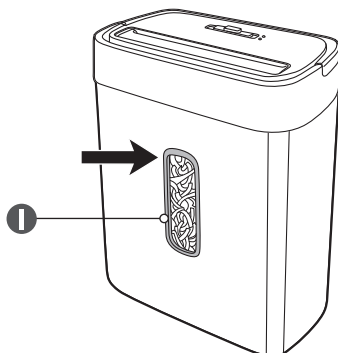
Overheat/ Overload

This indicator stays on red when the product has shredded continuously beyond the maximum running time of 3 minutes, and has overheated. The product automatically shuts off. Switch the shredder off for 30 minutes or longer before resuming normal operation.

This indicator flashes when too much paper has been inserted into the feed slot (D). The product stops automatically. Set the product to **REV** mode to pull out the batch of paper. Reduce the number of sheets and try again.

8. Emptying the bin

6



1. Look through the transparent window (I) to determine whether the waste bin (G) is already full (Fig. 6).
2. Lift the handle (E) to separate the shredder (F) from the waste bin (G) and throw away the shredded paper in the trash.

⚠ WARNING Risk of injury!

- ▶ It is recommended to switch to **OFF** mode when lifting the product. The blades on the feed slot (D) may cause hair or clothes to accidentally go through and cause injury.
- ▶ The blades on the bottom of the product are enclosed, however, exercise caution when removing papers that are stuck when emptying the waste bin (G).

NOTICE The sensor will trigger the motor to automatically stop when the waste bin (G) is lifted. The **Power** indicator (A) goes off.

9. Cleaning and Maintenance

⚠ WARNING Risk of electric shock!

- ▶ To prevent electric shock, unplug the product before cleaning.
- ▶ During cleaning do not immerse the electrical parts of the product in water or other liquids. Never hold the shredder (F) under running water.

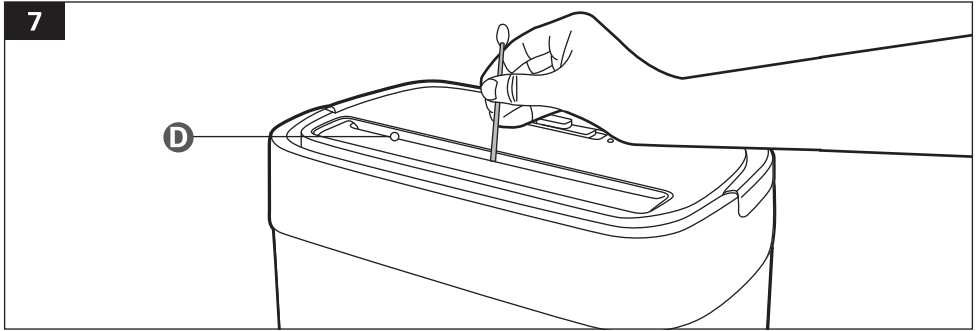
⚠ WARNING Risk of explosion!

Do not spray or keep any aerosol products in or around the product.

9.1 Cleaning

- ▶ To clean the product, wipe with a soft, slightly damp cloth.
- ▶ Wipe the product dry after cleaning.
- ▶ Do not use corrosive detergents, wire brushes, abrasive scourers, metal or sharp utensils to clean the product.
- ▶ Do not try to clean the shredder cutters on the feed slot (D).

9.1.1 Cleaning the sensor



1. Unplug the product from the power supply.
2. Using a Q-tip, gently wipe away dust and buildup from the sensor (Fig. 7).

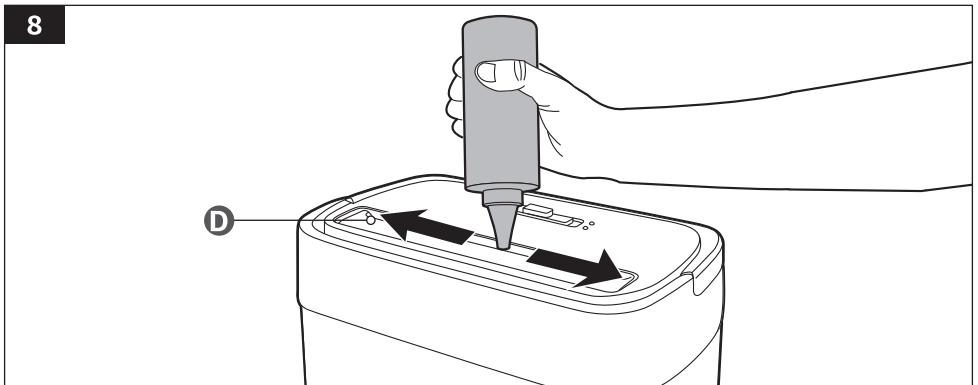
9.2 Oiling procedure

⚠ WARNING Risk of explosion!

Do not use aerosol/pressurized products.

NOTICE If not oiled, this product may experience diminished shredding capacity, intrusive noise when shredding and could ultimately stop operating. Use a dedicated shredder oil or lubricant sheets only (not provided).

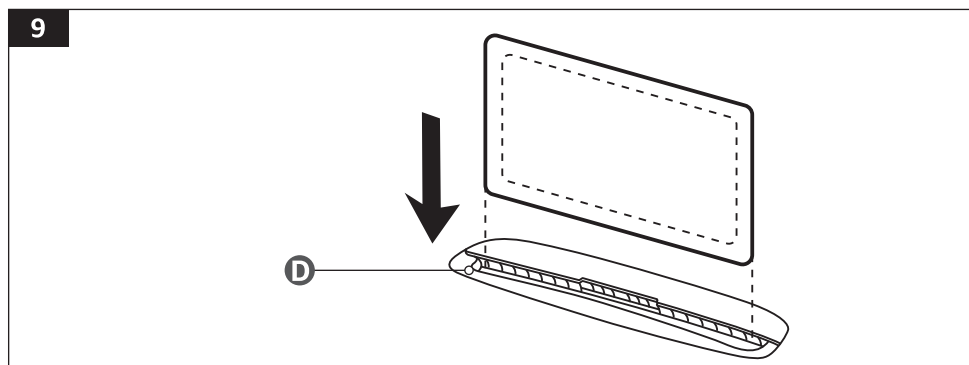
9.2.1 Using shredder oil (not provided)



1. Set the slide switch (C) to **OFF**.
2. Drizzle some oil onto the feed slot (D) (Fig. 8).
3. Set the slide switch (C) to **REV** to activate reverse mode for 3 – 5 seconds.

9.2.2 Using lubricant sheets (not provided)

Description	ASIN/Model no.
Lubricant sheet	B0C6LX5DZX, B0C6LXB875/ AO12, AO24



1. Insert one lubricant sheet into the feed slot (D) and let it shred (Fig. 9).
2. After shredding, set the slide switch (C) to **REV** for 10 seconds to allow the lubricant to coat all blades.

9.3 Storage

- ▶ Store the product in its original packaging in a dry area. Keep away from children and pets.
- ▶ Avoid placing the product in moist and humid areas to prevent rust.

9.4 Maintenance

Any other servicing than mentioned in this manual should be performed by a professional repair center.

10. FCC – Supplier's Declaration of Conformity

Unique Identifier	BOC6LZ8S34, BOC6LXGNY1-8-sheet Cross-Cut Paper and Credit Card Shredder
Responsible Party	Amazon.com Services LLC.
U.S. Contact Information	410 Terry Ave N. Seattle, WA 98109 USA
Telephone Number	(206) 266-1000

10.1 FCC Compliance Statement

1. This device complies with Part 15 of the FCC Rules. Operation is subject to the following two conditions:
 - (1) this device may not cause harmful interference, and
 - (2) this device must accept any interference received, including interference that may cause undesired operation.
2. Changes or modifications not expressly approved by the party responsible for compliance could void the user's authority to operate the equipment.

10.2 FCC Interference Statement

This equipment has been tested and found to comply with the limits for a Class B digital device, pursuant to part 15 of the FCC Rules. These limits are designed to provide reasonable protection against harmful interference in a residential installation. This equipment generates, uses and can radiate radio frequency energy and, if not installed and used in accordance with the instructions, may cause harmful interference to radio communications. However, there is no guarantee that interference will not occur in a particular installation. If this equipment does cause harmful interference to radio or television reception, which can be determined by turning the equipment off and on, the user is encouraged to try to correct the interference by one or more of the following measures:

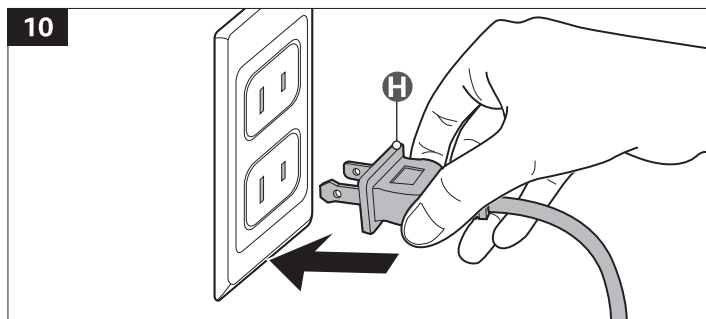
- ▶ Reorient or relocate the receiving antenna.
- ▶ Increase the separation between the equipment and receiver.
- ▶ Connect the equipment into an outlet on a circuit different from that to which the receiver is connected.
- ▶ Consult the dealer or an experienced radio / TV technician for help.

11. Canada IC Notice

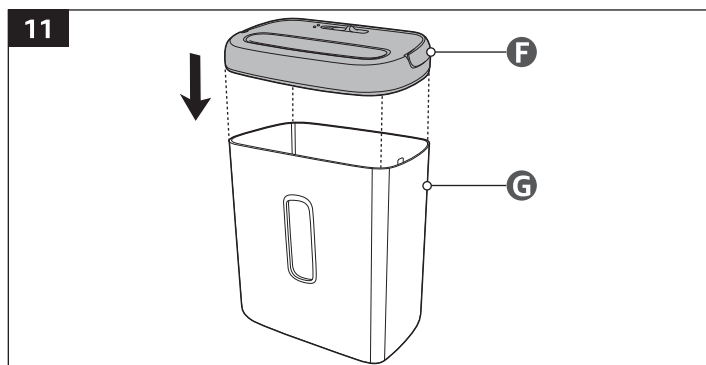
This Class B digital apparatus complies with Canadian CAN ICES-003(B) / NMB-003(B) standard.

12. Frequently Asked Questions

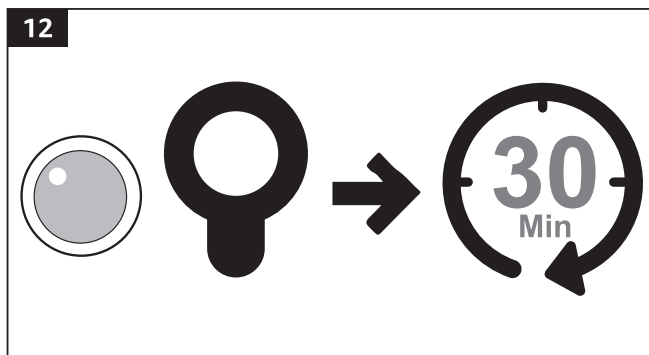
Problem	Possible cause	Solution
The product does not switch on.	The socket outlet does not have power or the voltage is too low.	Check if the plug (H) is connected to the socket outlet. Use voltage tester to verify if the socket outlet is powered (Fig. 10).
	The product is not switched on.	Check if the slide switch (C) is set to FWD/AUTO/REV position.



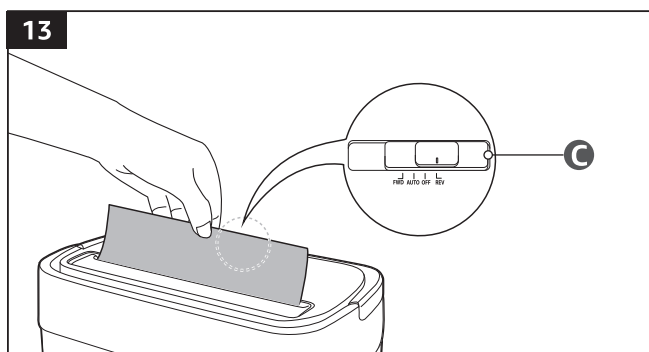
The waste bin (G) is not in place or is already full.	Remove, empty and refit the waste bin (G) in place properly (Fig. 11).
---	--



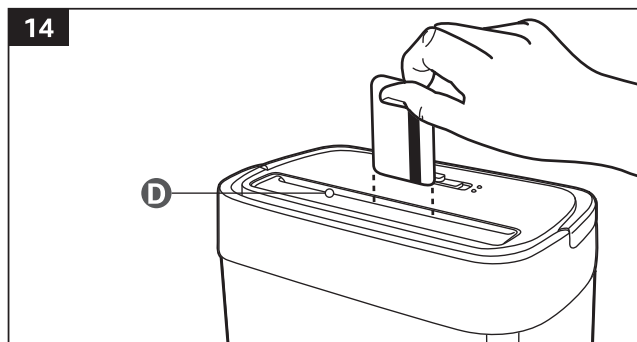
Problem	Possible cause	Solution
The product shuts off.	The motor has overheated due to extended operation longer than 3 minutes.	Stop using the product. Wait for 30 minutes or longer to cool down before resuming operation (Fig. 12).



The product runs only in REV mode and not in AUTO mode or FWD mode.	The feed slot is jammed.	<ol style="list-style-type: none"> 1. Set the slide switch (C) to OFF. 2. Set the slide switch (C) to REV to eject the paper (Fig. 13). 3. Spread and loosen the paper. Set the slide switch (C) to FWD to shred the paper again. 4. Loosen the jammed paper with shredder oil. Drizzle the oil into the feed slot (D). Let it soak for about 30 minutes and repeat the procedure.
--	--------------------------	---



Problem	Possible cause	Solution
The product does not feed or shred credit card or small pieces of paper.	The sensor is not activated.	<p>The sensor of the product is located near the centre of the feed slot (D). Feed directly into the centre area to activate the motor, especially for smaller pieces of paper or credit cards (Fig. 14).</p> <p>Take note and follow the guide icon on the panel for correct positioning.</p>



The product is constantly operating while in AUTO mode.	The sensor(s) is/are dirty.	<ol style="list-style-type: none"> 1. Set the slide switch (C) to OFF and unplug the product from the socket outlet. 2. Clean the sensors of the feed slot (D) through the slot, not the blades, with a dry cotton swab (Fig. 7).
--	-----------------------------	--

13. Specifications

Model number	C276-A
Rated voltage	120 VAC, 60 Hz
Rated power consumption	2.5 A
Noise emission	≤70 dB (without loading)
Protection class	Class II
Sheet capacity	max 8 sheets of 75 gsm paper
Shredded paper size	≤0.24 x 0.98" (6 x 25 mm) pieces
Shred type	Cross-cut
Shredding slot width	8.7" (22 cm)
Credit card capacity	1 at a time
Paper bin volume	3.7 gal (14 L)
Security level	P-4
Net weight	approx. 8.6 lbs (3.9 kg)
Dimensions (W x H x D)	approx. 11.8 x 7.1 x 13.8" (30 x 18 x 35 cm)

14. Feedback and Help

We would love to hear your feedback. To ensure we are providing the best customer experience possible, please consider writing a customer review.

Scan QR Code below with your phone camera or QR reader:



If you need help with your Amazon Basics product, please use the website or number below.



amazon.com/gp/help/customer/contact-us



+1 877-485-0385