

● *Blueair*

User manual



SCAN FOR SUPPORT

Mini Restful™
Air Purifier
Sunrise Clock

Please read this user manual carefully and keep it for future reference.

The latest version of this user manual can be found on www.blueair.com.

Table of Contents

Safety information	3
Mini Restful™ Air Purifier and Sunrise Clock	5
Product map	6
Device controls	7
Getting started	9
Filter replacement information	10
Maintenance information	13
Setting up Sunrise alarm	14
Troubleshooting	16
Disposal,Support and Warranty	17
Regulatory information	18



0113692001

Safety Information

Mini Restful™ Air Purifier and Sunrise Clock is an electrical appliance for indoor use only. Take the necessary precautions to reduce the risk of fire, electric shock or injury.

- This appliance should not be used by children or people with reduced physical, sensory or mental capacities or lack of experience and knowledge unless they have been given supervision or instruction concerning use of the appliance in a safe way and understand the hazards involved.
- Supervise children to ensure that they do not play with the appliance.
- Cleaning and product maintenance should not be conducted by children.
- Always disconnect the appliance from the power supply before maintenance.
- If your Blueair appliance is found to be defective, we will replace it with the same or a similar model at no cost, per the warranty terms. Please use caution attempting repairs yourself, as this presents the danger of electrical shock or injury.
- Ensure that the power cable and the power plug are not at risk of getting damaged.
- If the appliance is damaged or malfunctions, turn it off, disconnect it from the power supply and contact Blueair.
- The power plug must be firmly inserted in the power socket.
- When disconnecting the unit from the power supply, do not pull on the power cord, pull on the power plug.
- Use the power cable provided with your Blueair air purifier to plug directly and firmly into an appropriate, electrical outlet.
- To reduce risk of fire, electric shock or injury to persons, do not use replacement parts that have not been recommended by manufacturer (e.g. parts made at home using a 3D printer).
- Do not use an extension cord or a power strip. Refer to the rating label on your appliance.
- Do not alter the power plug in any way. If the plug does not fit into the outlet, contact qualified personnel to install the proper outlet.
- For charging port, burned fingers when handling the parts. Wait one-half hour after switching off before handling parts.
- **WARNING: RISK OF FIRE/INJURY TO PERSONS.** Keep away from combustibles.

- To avoid risk of fire or electric shock, the appliance should only be used with the correct input voltage that it is rated for, refer to your rating label on the device.
- Do not use the included power cord for anything else but the appliance.
- Do not allow objects to enter or block the air inlets and air outlets as this can cause electric shock or damage the appliance.
- Do not sit on, stand, climb onto or hang from the appliance.
- Keep the appliance, including the power cable, at a safe distance from heated surfaces and open fire.
- Keep the appliance and power plug away from water and other liquids.
- Keep the appliance and power plug away from chemicals such as pesticides and deodorants.
- Always turn off and disconnect the appliance from the power supply before moving the unit, changing filters, cleaning or carrying out maintenance procedures.
- Never clean with gasoline, chemical solvents, or corrosive materials as these agents may damage the air purifier.
- Do not operate the device with a damaged cord or plug. Discard the device or return it to an authorized service facility for examination and/or repair.
- Use caution when using or handling the USB-C charging port to avoid electric shock or burns. In the event that the USB-C charging port requires service or cleaning, please unplug the device and wait 30 minutes to allow all components to cool to room temperature before handling any parts.
- This product complies with the maximum allowable concentration of ozone of 0.050 parts per million by volume (ppmv) in a 24-h period.
- The energy efficiency of this ENERGY STAR certified model is based on the Integrated Energy Factor (IEF), a ratio between the model's PM2.5 CADR and its energy consumption, in terms of CADR/Watt.



WARNING: RISK OF ELECTRIC SHOCK. - These servicing instructions are for use by qualified personnel only. To reduce the risk of electric shock, do not perform any servicing other than that contained in the operating instructions unless you are qualified to do so.

Mini Restful™ Air Purifier and Sunrise Clock

Recommendations for best performance

- Ensure that the size of the room where the air purifier is placed does not exceed the recommended capacity.
- Position the air purifier in an area where air can freely flow in and out, ensuring proper circulation.
- Maintain a distance of at least 4 inches (10 cm) between the air purifier and any other object to ensure proper air circulation.
- Keep the doors and windows closed while the air purifier is in operation.
- Replace the filter when the filter replacement indicator turns red on the control panel.
- Refer to the maintenance instructions in this user manual for proper care.

Product Map

Product Name

Mini Restful™ Air Purifier
and Sunrise Clock

Model

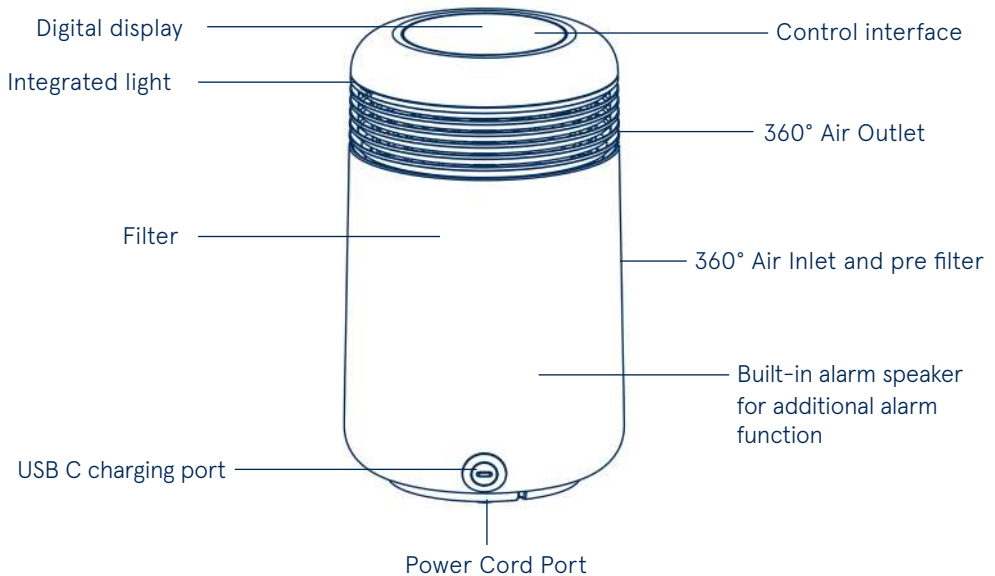
SC9i

Model number

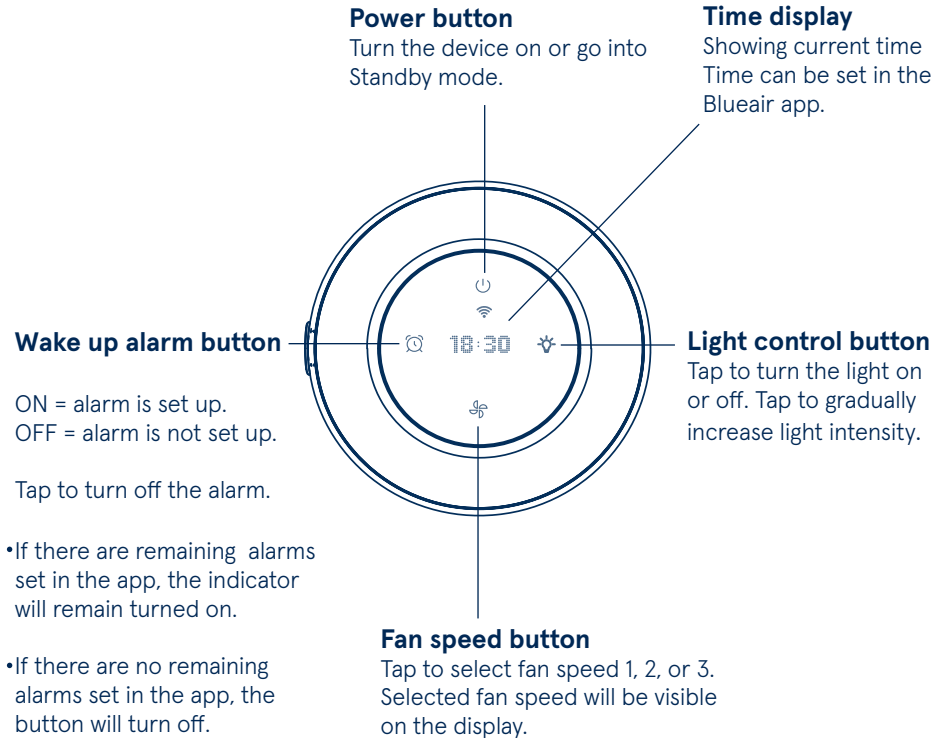
1831022000

1831023000

1831024000



Device Controls



Device Controls



Filter replacement

After replacing the filter, press and hold the Fan Speed button for 15 seconds or go to the Blueair app to reset the Filter Replacement Indicator.



Enable/Disable Wi-Fi Pairing

If you choose not to connect the product, the Wi-Fi indicator will turn off automatically after 10 minutes.

If device was previously onboarded, you can reset the Wi-Fi by pressing Power button and Fan Speed button simultaneously for 5 seconds.

To reconnect your air purifier to Wi-Fi, hold the Fan Speed button for about 5 seconds until the Wi-Fi LED starts blinking. Then follow the instructions in the "Connect to the Blueair App" section.



Factory reset

Extra long press On/standby button for about 15 seconds (until all the LEDs of the interface light up and blink four times). Then release.

After factory reset, the air purifier restarts with default will go into Standby mode.

Getting started

Connect to the Blueair App

Connecting to the Blueair App allows you to control the air purifier remotely and monitor filter usage. The app offers additional features to the device.

Step 1

Download the Blueair App from the App Store or Google Play.

Step 2

Open the app. Create or sign into your Blueair account.

Step 3

Click on + Add device and follow the instructions in the app.

First time connection tips

Turn on your air purifier. Press and hold the Fan speed button for 5 seconds to prepare the air purifier for pairing. Once the Wi-Fi indicator is visible on the display and blinking, it is ready to be paired with your app.



Bluetooth is required for first time pairing. Turn your phone's bluetooth on and keep your phone within 3 feet (1 meter) of the air purifier for initial pairing.



Keep your air purifier within 15 feet (4,5 meters) of your Wi-Fi router when connecting the product for the first time.



Make sure you are using a visible Wi-Fi network. VPN (Virtual Private Network) should be deactivated while using the Blueair app.



This air purifier can only connect to a 2.4 GHz Wi-Fi network. If you are using a dual-band Wi-Fi router, make sure to select 2.4GHz.



Filter Replacement Information

Changing the filter

Important! Always turn off and disconnect from the power supply before changing filters, cleaning, or carrying out device maintenance.

When it is time to change the filter, the filter replacement indicator will turn on. The recommended time for filter change is 9 - 12 months.

Easily order Blueair filters from www.blueair.com or sign up to Blueair filter subscription for additional discount.

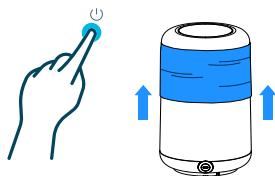


Filter
replacement
indicator

Changing the filter

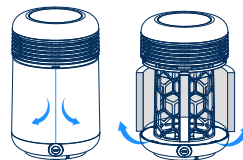
Step 1

Turn off the air purifier and unplug it. Remove the pre-filter fabric.



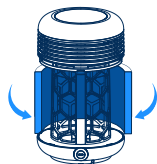
Step 2

Unwrap the current filter by opening the velcro connection through pulling on the tag.



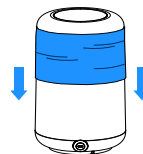
Step 3

Wrap the new filter around the purifier body and connect it.



Step 4

Pull back on the prefilter fabric. Turn the purifier back on.



Step 5

Reset the Filter Indicator by pressing the Fan Speed button for 15 seconds or go to your device page in the Blueair App to reset.



Cleaning your washable pre-filter

Clean your pre-filter regularly when you see dust or dirt. Vacuum the exterior of the fabric with a soft brush attachment. For a deeper cleanse wash according to the pre-filter maintenance instructions and hang to dry.

Step 1

Turn the air purifier off and unplug it.



Step 2

Remove the fabric pre-filter.



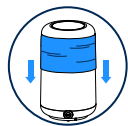
Step 3

Wash according to instructions on the fabric pre-filter's label.



Step 4

Pull the clean pre-filter back over the main filter and tuck the pre-filter in the gap between the purifier body and air outlet.



Step 5

Please ensure that the logo tag of the pre-filter is on the upper part. Please ensure the gap for the USB C charging port is positioned correctly on the USB C charging port.



Maintenance Information

To maintain optimal air purification performance regular maintenance is recommended. Please follow below recommended steps to clean your device.

General

- Disconnect the air purifier from the power supply.
- Do not allow foreign objects to enter the air inlets or air outlets. This may cause electric shock or damage the air purifier.
- Never clean with gasoline, chemical solvents or corrosive materials as these agents may damage the air purifier.
- Do not wash the replacement filter, it's not washable or reusable.

Cleaning

- Wipe the top of the air purifier with a soft, clean cloth.
- Clean and check the power cable and power plug for wear or damages.
- Clean the pre-filters by washing in the washing machine or vacuum on low setting with a soft brush attachment (not included).

Setting up Sunrise Clock

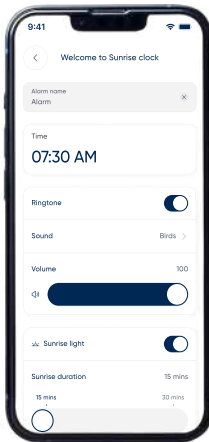
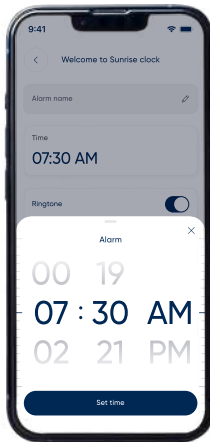
NOTE! Connecting to the app is required for Sunrise Clock or Sound Clock set up.

Inspired by nature's sunrise, the Sunrise Clock has a unique combination of light and sound to wake you up in a more natural way, so you feel more refreshed each morning.

Setting up the Sunrise Clock

When you enable Sunrise Clock, the integrated light gradually increases for 15 - 30 minutes until your room is filled with bright light mimicking sunrise. The process of the light gradually increasing stimulates your body to wake up naturally.

1. Set up your desired wake-up time
2. Enable the Sunrise Clock and select the Sunrise duration
3. Tap the alarm icon to turn off

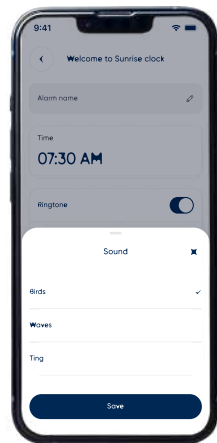


When an alarm is set in the app, the icon on the display will be lit up. You can tap the alarm icon/button to turn off the alarm.



(Optional) Adding a Sound alarm

1. Enable the Ringtone
2. Select one of the alarm sounds available
3. Adjust the desired volume
4. Once the time light has filled your room, the chosen sound alarm will turn on and complete the wake up experience, leaving you refreshed for the day ahead.



Winding down at Night

The integrated light can also be used as a mood light to mimic relaxing sunset and help you wind down for bedtime. Simply tap the light icon (light bulb) to turn on, increase or decrease light intensity for the perfect mood.



Troubleshooting

Issue	Potential Cause	Try This
There is a red hatch icon on my air purifier's panel.	It is time to change the filter.	<ol style="list-style-type: none">1. Change filter according to the instructions in this guide.2. Reset the Filter Indicator by pressing the Fan Speed button for 15 seconds or go to your device page in the Blueair App.
My air purifier is making too much noise.	Air purifiers that are set on a high-speed level produce more noise because they function at faster rates.	Set a lower fan speed or reset Filter indicator via the app. Adjust to a lower fan speed to reduce noise level.
	If the filter is too dirty and clogged the air purifier will not get sufficient airflow which may result in increased noise levels.	Replace the filter when the Filter replacement indicator turns red.
I cannot connect my air purifier.	The air purifier is too far from your phone and router during the setup.	<ol style="list-style-type: none">1. Ensure that your phone, air purifier and Wi-Fi router are in the same room and in close distance during initial set up, within 15 feet (4,5 meter). Once you have successfully paired your air purifier you can place it at your desired location.2. Make sure that your air purifier is plugged in and powered on.
	The Blueair App is not up to date.	Download the latest Blueair app version from the App store.
	The router is not on or has no connection. The router is not using a standard connection.	Ensure the following before trying to connect your product: <ol style="list-style-type: none">1. Internet is currently running2. You are using a 2.4GHz network.3. Deactivate VPN.
	Bluetooth is deactivated.	Ensure Bluetooth is enabled on your phone.
My air purifier has lost connection.	Temporary Wi-Fi disturbances. New Wi-Fi settings or router.	If your air purifier does not re-connect by itself after a few minutes: <ol style="list-style-type: none">1. Open the Blueair app.2. Select your air purifier and go to Device settings.3. Delete the air purifier.4. Go back to the home screen, click on the "+" sign in the upper right corner and choose "Add device". Follow the connection instructions.
My indoor air quality is not improving.	Indoor air quality remains polluted. Air quality sensors are dusty and showing incorrect levels.	<ol style="list-style-type: none">1. Unplug the air purifier and wait for approximately 30 seconds.2. Reconnect the power cable.3. Press the On/Standby button. If the air quality does not improve with the use of the air purifier and ventilation, please contact us at www.blueair.com .

For more information and troubleshooting tips, please check the Support page on www.blueair.com/support.

Disposal, Support and Warranty

Disposal and recycling

The air purifier should be disposed or recycled as electrical waste and the filter should be disposed as regular waste. If you have questions regarding the disposal and recycling of your device, please contact your local recycling facility.

Help and support

If you have questions about your product, please visit www.blueair.com or contact your local Blueair retailer.

Limited warranty information

The air purifier has a limited warranty of 3 years (1 year standard warranty and 2 extra years upon registration).



Regulatory Information

WARNING: Changes or modifications to this unit not expressly approved by the party responsible for compliance could void the user's authority to operate the equipment.

Note! This equipment has been tested and found to comply with the limits for a Class B digital device, pursuant to Part 15 of the FCC Rules. These limits are designed to provide reasonable protection against harmful interference in a residential installation. This equipment generates, uses and can radiate radio frequency energy and, if not installed and used in accordance with the instructions, may cause harmful interference to radio communications.

However, there is no guarantee that interference will not occur in a particular installation. If this equipment does cause harmful interference to radio or television reception, which can be determined by turning the equipment off and on, the user is encouraged to try to correct the interference by one or more of the following measures:

- Reorient or relocate the receiving antenna.
- Increase the separation between the equipment and receiver.
- Connect the equipment into an outlet on a circuit different from that to which the receiver is connected.
- Consult the dealer or an experienced radio/TV technician for help.

This device complies with Part 15 of the FCC Rules. Operation is subject to the following two conditions:

- This device may not cause harmful interference.
- This device must accept any interference received, including interference that may cause undesired operation.

This Class B digital apparatus complies with Canadian ICES-003.

This device contains licence-exempt transmitter(s)/receiver(s) that comply with Innovation, Science and Economic Development Canada's license-exempt RSS(s). Operation is subject to the following two conditions: (1) This device may not cause interference, and (2) This device must accept any interference, including interference that may cause undesired operation of the device.

FCC/ISED RF Exposure Information: This equipment should be installed and operated with a minimum distance of 8 inches (20 cm) between the unit and your body.