

사용설명서 Operating Instructions

CRP-P0609S Series

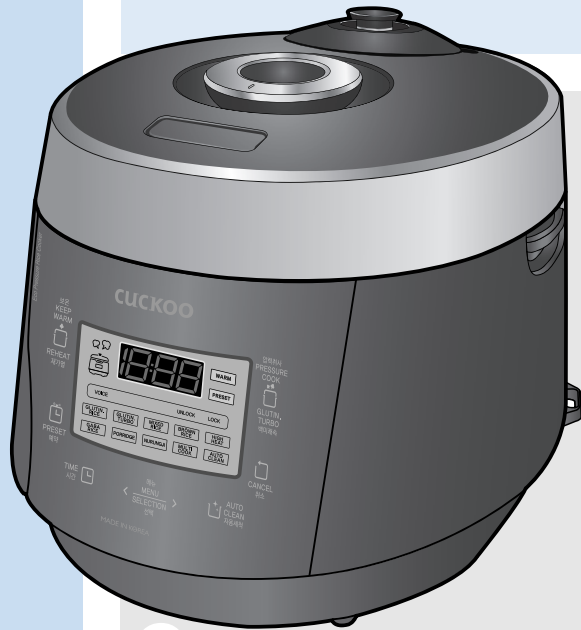
1.08L(1~6 Persons) / 1.08L(1~6인분)

**CUCKOO**  
always new

happiness

**NO.1 CUCKOO**

Electric Pressure Rice cooker/warmer



love

design

emotion

Thank you very much for purchasing “CUCKOO”  
Electric Rice cooker/warmer

Read the following instruction manual before use. Save this instruction manual for future reference. This manual will be useful if you have any questions or have problems operating the rice cooker.

저희 쿠쿠 압력보온밥솥을 애용해 주셔서  
대단히 감사 드립니다.

이 사용설명서는 잘 보관하여 주십시오.  
사용 중에 모르는 사항이 있을 때나 기능이 제대로  
발휘되지 않을 때 많은 도움이 될 것입니다.

**CUCKOO ELECTRONICS CO.,LTD.**

# CONTENTS

## CONTENTS

### BEFORE USING

Important safeguards	3
Specifications	5
Safety precautions	6~7
Name of each part	14
Function operating part	15
How to clean	24~28

### WHEN USING

How to set or cancel voice guide function	15
Before cooking rice	16
How to cook	17~18
CUCKOO customized taste function / For Nurungji(Korean crispy rice snack)	19
How to use "GABA Rice (Brown rice)"	20
How to use preset / Multi-cook function	21
For the best taste of rice	22
To keep cooked rice warm and tasty	23

### BEFORE ASKING FOR SERVICE

Check before asking for service	29~31
---------------------------------	-------

### COOKING GUIDE

Recipe	68~69
--------	-------

## 目录

### 使用前

Important safeguards	3
产品规格	5
安全警告	12~13
产品部件名称	50
功能操作部名称及作用	51
清洁保养方法	60~64

### 使用时

语音功能设定与解除	51
煮饭前准备事项	52
煮饭方法	53~54
调节饭味功能使用方法/锅巴硬度设定方法	55
糙米发芽煮饭方法	56
预约煮饭方法/万能炖菜单使用方法	57
保温/再加热方法	58
保温再加热方法	59

### 故障咨询前

常见故障及处理方法	65~67
-----------	-------

### 料理指南

料理指南	72~73
------	-------

## 목 차

### 사용하기전에

Important safeguards	3
제품규격	5
안전상의 경고	10~11
각 부분의 이름	32
기능 조작부의 이름과 역할	33
제품 손질 방법	42~46

### 사용할 때

음성안내 기능의 설정과 해제	33
취사 전 준비사항	34
취사는 이렇게 하십시오	35~36
쿠쿠 맞춤취사 / 누룽지는 이렇게 하십시오	37
현미발아는 이렇게 하십시오	38
예약취사 / 만능찜은 이렇게 하십시오	39
맛있는 밥을 드시려면	40
밥을 맛있게 보온하려면	41

### 고장 신고 전에

고장신고 전에 확인 하십시오	47~49
-----------------	-------

### 요리안내

요리안내	70~71
------	-------

## TABLE DES MATIÈRES

### AVANT L'UTILISATION

Important safeguards	4
Spécifications du produit	5
Avertissement de sécurité	8~9

## IMPORTANT SAFEGUARDS

1. Read all instructions before using this appliance.
2. Do not touch hot surfaces. Use handles or knobs.
3. To protect against fire, electric shock and / or injury to persons do not immerse cord, plugs, or Pressure Cooker Body in water or any other liquid.
4. Close supervision is necessary when this appliance is used by or near children. This appliance is not intended for use by young children without supervision.
5. Unplug cord from outlet when not in use and before cleaning.  
Allow appliance to cool before putting on or taking off parts, and before cleaning the appliance.
6. Do not operate any appliance with a damaged cord or plug, after the appliance malfunctions, or has been damaged in any manner. Return the appliance to the nearest authorized service facility for examination, repair or adjustment.
7. The use of accessory attachments not recommended by the appliance manufacturer may result in fire, electric shock, and / or injury to persons.
8. If the supply cord is damaged, it must be replaced by a special cord or assembly available from the manufacturer or your service agent.
9. Do not use outdoors.
10. Do not let the cord hang over the edge of a table or counter, or touch hot surfaces.
11. Do not place on or near a hot gas, electric burner, or in a heated oven.
12. Always attach the plug to the appliance first, then plug the cord into the wall outlet. To disconnect, or set all control to "off", then remove the plug from the wall outlet.
13. Do not use this appliance for other than its intended use.
14. Extreme caution must be used when moving an appliance containing hot oil or any hot liquids.
15. Oversized foods, metal foil packages, or utensils must not be inserted into the appliance as they are a risk of fire or electric shock.
16. Fire may occur if the appliance is covered or touching flammable material, including curtains, draperies, walls, etc while in operation.
17. To reduce the risk of electric shock, cook only in the provided removable container.
18. This appliance cooks under pressure. Improper use may result in scalding injury.  
Before operating the unit, properly secure and close the unit. See "Operating Instructions."
19. Do not cook foods such as applesauce, cranberries, cereals, macaroni, spaghetti, or other foods.  
These foods tend to foam, froth, and sputter, and may block the pressure releasing device
20. Before use always check the pressure releasing device for clogging.
21. Do not open the pressure cooker until the unit has cooled and internal pressure has been reduced.  
See "Operating Instructions."
22. Do not use this pressure cooker to fry in oil.

## SAVE THESE INSTRUCTIONS THIS APPLIANCE IS FOR HOUSEHOLD USE ONLY

## ADDITIONAL IMPORTANT SAFEGUARDS

**WARNING :** This appliance generates heat and releases steam during use. Use proper precaution to prevent risk of burns, fires, other injuries, or damage to property.

1. Keep hands and face away from the Pressure Release Valve when releasing pressure.
2. Take extreme caution when opening the Lid after cooking. Severe burns can result from steam inside.
3. Never open the Lid while the unit is in operation.
4. Do not use without the inner Pot in place.
5. Do not cover the Pressure Valve with anything as an explosion may occur.
6. Do not touch the inner pot nor any heating parts, immediately after use.  
Allow the unit to cool down completely first.

This appliance is intended to be used in household and similar applications such as :

- staff kitchen areas in shops, offices and other working environments;
- farm houses;
- by clients in hotels, motels and other residential type environments;
- bed and breakfast type environments.

## MESURES DE PROTECTION IMPORTANTES

1. Lisez toutes les instructions avant d'utiliser cet appareil.
2. Ne touchez pas les surfaces chaudes. Utilisez les poignées ou les boutons.
3. Pour prévenir les risques d'incendie, les chocs électriques et/ou les blessures, ne plongez pas le cordon, les prises ou le corps autocuiseur dans l'eau ou tout autre liquide.
4. Une surveillance étroite est nécessaire quand cet appareil est utilisé par des enfants ou qu'il se situe à leur portée. Cet appareil n'est pas prévu pour être utilisé par de jeunes enfants sans surveillance.
5. Débranchez le cordon de la prise lorsque vous ne vous servez pas de l'appareil et avant de le nettoyer. Laissez l'appareil refroidir avant de remettre en place ou de retirer des pièces, et avant de le nettoyer.
6. N'utilisez aucun appareil si le cordon ou la fiche est endommagé, s'il ne fonctionne pas correctement ou s'il est endommagé de quelque façon que ce soit. Renvoyez l'appareil à un centre technique agréé le plus proche pour le faire examiner, réparer ou régler.
7. L'utilisation d'accessoires non recommandés par le fabricant peut causer un incendie, un choc électrique et/ou des blessures.
8. Si le cordon d'alimentation est endommagé, il doit être remplacé par un cordon ou ensemble prévu à cet effet, disponible auprès du fabricant ou de réparateurs agréés.
9. N'utilisez pas l'appareil à l'extérieur.
10. Ne laissez pas le cordon pendre d'une table ou d'un comptoir. Ne le laissez pas non plus en contact avec une surface chaude.
11. Ne placez pas l'appareil au-dessus ou près d'un brûleur à gaz, sur une plaque électrique ou dans un four chaud.
12. Branchez toujours la fiche sur l'appareil en premier, puis branchez le cordon dans la prise murale. Pour débrancher, ou désactiver toutes les commandes, retirez la fiche de la prise murale.
13. N'utilisez pas cet appareil à des fins autres que celles pour lesquelles il a été conçu.
14. Une prudence extrême est requise lorsque vous déplacez l'appareil contenant de l'huile chaude ou tout autre liquide chaud.
15. Des denrées alimentaires de taille excessive, les emballages sous feuille métallique, ou les ustensiles ne doivent pas être insérés dans l'appareil car ils constituent un risque d'incendie ou de choc électrique.
16. Un incendie peut se déclarer si l'appareil est couvert ou en contact avec des matériaux inflammables, y compris des rideaux ou des draperies, des murs, etc durant son fonctionnement.
17. Afin de réduire le risque de choc électrique, faites cuire uniquement dans le récipient amovible fourni.
18. Cet appareil cuit sous pression. Un mauvais usage peut entraîner des brûlures. Avant d'utiliser l'appareil, mettez l'appareil bien en place et fermez-le. Reportez-vous à la section « Instructions d'utilisation ».
19. Ne cuisinez pas des aliments tels que compotes de pommes, canneberges, céréales, macaronis, spaghettis ou autres. Ces aliments ont tendance à mousser, écumer et à crépiter et peuvent obstruer le dispositif de relâchement de la pression.
20. Avant toute utilisation, vérifiez toujours si le dispositif de relâchement de la pression est obstrué.
21. N'ouvrez pas l'autocuiseur jusqu'à ce que l'appareil ait refroidi et que la pression interne ait diminué. Reportez-vous à la section « Instructions d'utilisation ».
22. N'utilisez pas cet autocuiseur pour faire frire dans de l'huile.

## CONSERVEZ CES INSTRUCTIONS

CET APPAREIL EST DESTINÉ À UN USAGE DOMESTIQUE UNIQUEMENT

## MESURES DE PROTECTION SUPPLÉMENTAIRES

**AVERTISSEMENT :** Cet appareil génère de la chaleur et libère de la vapeur durant son fonctionnement. Utilisez les protections appropriées pour prévenir le risque de brûlures, d'incendies, de blessures ou de dégâts matériels.

1. Gardez vos mains et votre visage à l'écart de la soupape de décharge lors du relâchement de la pression.
2. Faites extrêmement attention lors de l'ouverture du couvercle après la cuisson. La vapeur à l'intérieur peut provoquer des brûlures graves.
3. N'ouvrez jamais le couvercle lorsque l'appareil est en fonctionnement.
4. N'utilisez pas l'appareil sans la cuve de cuisson à sa place.
5. Ne recouvrez pas la soupape de pression par un objet quelconque, une explosion pourrait survenir.
6. Ne touchez pas la cuve de cuisson ni les éléments chauffants immédiatement après utilisation. Laissez tout d'abord l'appareil refroidir complètement. Cet appareil est prévu pour être utilisé à la maison à des fins telles que :
  - la cuisine pour le personnel dans des magasins, des bureaux et d'autres environnements de travail;
  - les fermes;
  - par des clients dans des hôtels, des motels et autres environnements de type résidentiel;
  - des environnements de type chambres d'hôtes.

# HOW TO USE EXTENSION CORD / COMMENT UTILISER UNE RALLONGE

## Note:

- A. A short power-supply cord (or cord set) is provided to reduce the hazards from entanglement by a longer cord.
- B. Extension cord should be used properly.
- C. Extension cord usage for the rice cooker:
  - (1) The correct rated voltage should be used for the rice cooker.
  - (2) If the appliance is set on the ground, the extension cord should also be set on the ground.
  - (3) The cord wires and extension cord should always be arranged to prevent hazards to children.

This appliance has a polarized plug : (one blade is wider than the other).

As a safety feature, this plug will fit in a polarized outlet only one way.

If the plug does not properly fit in the outlet, turn the plug over.

If it still does not fit, contact a qualified electrician.

Please, keep this safety feature.

## Remarque :

- A. Un cordon d'alimentation court (ou câble) est fourni pour réduire les dangers d'emmêlement causés par un cordon plus long.
- B. La rallonge doit être utilisée correctement.
- C. L'utilisation de la rallonge pour le cuiseur à riz :
  - (1) La tension nominale correcte doit être utilisée pour le cuiseur à riz.
  - (2) Si l'appareil est installé sur le sol, la rallonge doit aussi être installée sur le sol.
  - (3) Les câbles et la rallonge doivent toujours être disposés dans le but d'éviter les dangers pour les enfants.

Cet appareil dispose d'une fiche polarisée : (une broche est plus large que l'autre).

Par mesure de sécurité, cette fiche ne peut s'enfoncer dans une prise polarisée que dans un seul sens.

Si la fiche ne s'enfonce pas correctement dans la prise, retournez-la.

Si elle ne s'enfonce toujours pas, contactez un électricien qualifié.

Veuillez respecter cette mesure de sécurité.

# SPECIFICATIONS / 제품규격 / SPÉCIFICATIONS

Model Name / NOM DU MODÈLE (모델명)		CRP-P0609S Series
Power Supply / CORDON D'ALIMENTATION(전원)		AC120V, 60Hz
Power Consumption / CONSOMMATION D'ÉNERGIE(소비전력)		890W
Cooking Capacity CAPACITÉ DE CUISSON (취사용량)	Glutinous Rice(백미)	0.36~1.08(2~6cups)
	HIGH HEAT GLUTIN. RICE(백미고화력)	
	TURBO GLUTINOUS RICE(백미쾌속)	
	MIXED RICE(잡곡)	0.36~0.72(2~4cups)
	HIGH HEAT MIXED RICE(잡곡고화력)	
	BROWN RICE(현미)	
	HIGH HEAT BROWN RICE(현미고화력)	
	NU RUNG JI(누룽지)	0.18~0.27L(1~1.5cups)
PORRIDGE(영양죽)	THICK PORRIDGE(된죽)	
	THIN PORRIDGE(물은죽)	0.9~0.18L(0.5~1cups)
Power Cord Length/LONGUEUR DU CORDON D'ALIMENTATION(전원 코드 길이)		1.0m
Pressure / PRESSION (사용압력)		78.4KPa(0.8kgf/cm <sup>2</sup> )
Weight / POIDS(중량)		5.7Kg
Dimension/DIMENSION(치수)	Width/LARGEUR(폭)	29.4cm
	Length/LONGUEUR(길이)	36.1cm
	Height/HAUTEUR(높이)	25.8cm

# HOW SERVICE IS HANDLED / MISE EN OEUVRE DU SERVICE


**USA** The East and the Central Districts  
Tel. No. 718 888 9144  
The West and the Central Districts  
Tel. No. 323 780 8808


**Canada** TORONTO  
Tel. No. 905 707 8224  
VANCOUVER  
Tel. No. 604 540 1004

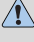




# SAFETY PRECAUTIONS

- Read the following product safety guide carefully to prevent any accidents and/or serious danger.
- ‘Warning’ and ‘Caution’ are different as follows.

 **Warning** This means that the action it describes may result in death or severe injury.

 **Caution** This means that the action it describes may result in injury or property damage.

 • This sign is intended to remind and alert that something may cause problems under the certain situation.  
• Please read and follow the instruction to avoid any harmful situation.

 • Indicates a prohibition  
 • Indicates an instruction

## **Warning**      **Do not**

**Do not cover the automatic steam outlet or pressure weight with your hand or face.**

- It can cause burns.
- Especially be careful to keep it out of children’s reach.

**Do not use the cooker near hot things such as stove, gas stove or direct ray of light.**

- It can cause an electric shock, fire, deformation, malfunction, or discoloration. Please check the power cord and plug frequently.

**Do not alter, reassemble, disassemble or repair.**

- It can cause fire, electric shock or injury.
- For repair, contact dealer or the service center.

**Use a single socket with the rated current above 15A.**

- Using several lines in one socket can cause overheating or fire. Please check the power cord and plug frequently.
- Use an extension cord with the rated current above 15A.

**Please pay careful attention against water and chemicals**

- It can cause an electric shock or fire.

**Do not use a rice cooker at a place where dust is trapped or chemical material is located.**

- Do not use any combustible gas or flammable materials nearby a product.
- It can cause explosion or fire.

**Do not use damaged power cord, plug, or loose socket.**

- Please check the power cord frequently for damage.
- Serious damage can cause electric shock or fire.
- If the plug is damaged, contact the dealer or a service center.

**Do not clean the product with water or pour water in the product.**

- It can cause an electric shock or fire.
- If it contacts water, please separate power cord and contact dealer and service center.

**Do not cover the automatic steam outlet or pressure weight with a duster, a towel, or apron, etc.**

- It can cause deformation or a breakdown.
- It can cause an explosion by pressure.

**Do not use pots that are not designed for the cooker. Do not use abnormal pot and do not use without the inner pot.**

- It can cause an electric shock or fire.

**Do not bend, tie, or pull the power cord by force.**

- It can cause an electric shock or short circuit resulting in fire. Please check the power cord and plug frequently.

**Do not use it without the inner pot.**

- It can cause electric shock or malfunction.
- Do not pour rice or water without the inner pot.
- If rice or water gets in then do not turn the product over or shake it, please contact the dealer or service center.

**Do not turn the Lock/Unlock Handle to “Unlock” while cooking.**

- The hot steam or any hot content within the cooker can cause burns.
- After you finish the cooking do not try to open the cooker by force until the steam is completely exhausted.

**Do not over unplug and plug the power cord over and over.**

- It can cause an electric shock or fire.

**Do not insert metal objects such as pins and wires or any other external substances in the automatic steam exhaust outlet or any other slot.**

- It can cause an electric shock or fire.
- Especially be careful to keep it out of reach of children.

**Keep the cooker out of reach of children.**

- It can cause burns, electric shock or injury.

**Don’t spray or put any insecticides or chemicals.**

- It can cause an electric shock or fire.
- If cockroaches or any insects get inside the cooker, please call a dealer or a service center.

**Don’t let foreign substances such as needle, cleaning pin, or metal get in or block the in let/out let pipe or gape.**

- It can cause an electric shock or fire.
- Do not put a cleaning pin in a gap or a hole of the product except when dearing a steam outlet.

**Do not open the top cover while in heating and cooking.**

- It can cause burns.
- If you need to open the lid while cooking, keep pressing the cancel button for 2 seconds and confirm internal steam released completely turning the pressure weight over.

**Remove a foreign substance on the cord and plug with a clean cloth.**

- It can cause fire. Please check the power cord and plug frequently.

**Be careful that both the plug and power cord are not to be shocked by animal attack or sharp metal materials.**

- Damages by impact can cause an electric shock or fire. Please check the power cord and plug frequently.

# SAFETY PRECAUTIONS



## Caution



## Do not

### Do not use it on a rice chest or a shelf.

- Do not place the power cord between furniture. It can cause an electric shock resulting in fire. Please check the power cord and plug frequently.
- When using on furniture be cautious of steam release. As it can cause damage, fire and and/or electric shock.

### Do not press heavy things on the power cord.

- It can cause an electric shock or fire.
- Please check the power cord and plug frequently

### Do not change, extend or connect the power cord without the advice of a technical expert.

- It can cause an electric shock or fire.

### Clean any dust or external substances off the temperature sensor and inner pot.

- It can cause a system malfunction or fire.

### Do not plug or pull out the power cord with wet hands.

- It can cause an electric shock.

### Do not move the product by pulling or using the power cord.

- Electric short might cause fire.

### Please contact a dealer or service center when there is a strange smell or smoke.

- First pull out the power cord. And contact dealer or the service center.

### Do not use over the maximum capacity.

- It can cause overflow or breakdown.
- Do not cook over stated capacity for cooking of chicken soup and congee.

### Do not touch the metallic surface of the inner pot and pressure weight after cooking or warming.

- It can cause burns.
- Remaining hot steam can cause burns when you tilt the pressure weight while and right after the cooking.

### Don't use the cooker near a magnetic field.

- It can cause burns or breakdown.

### Do not drop or impact the cooker.

- It can cause a safety problem.

### Please surely pull out the plug when not in use.

- It can cause electric shocks or fire.
- Use AC 120V only.

### Use product on a flat surface. Do not use on a cushion. Please avoid using it on an unstable location prone to falling down.

- It can cause malfunction or a fire. Please check the power cord and plug frequently.

### Don't use for various purpose for inner pot. And do not heat up the inner pot on the gas stove.

- It can cause deformation of the inner pot.
- It can cause to spill the inner coating.

### Please pull out the plug when not in use.

- It can cause electric shocks or fire.

### Please use the cooker for it's intended purpose.

- It can cause malfunction or smell.

### After you finish cooking, do not try to open the cooker by force until the steam is completely exhausted.

- The hot steam or any hot content within the cooker can cause burns.
- Cautiously open the top cover after cooking is done to avoid dangerous steam and burns.

### Do not place on rough top or tilted top.

- It can cause burns or breakdowns.
- Be careful to install the power cord to pass without disruption.

### Please call customer service if the inner pot coating peels off.

- Inner pot coating may wear away after long use.
- When cleaning the inner pot, do not use tough scrubber, metallic scrubber, brush, abrasive metallic etc.

### Do not hold the cooker by the inner pot handle.

- It can cause problems and danger. There are portable handles on the bottom right and left side of the cooker. Hold the handles with both hands and move it carefully.

### Always turn the Lock/Unlock Handle to "Lock" when not in use.

- It can cause deformation by remaining pressure.

### Wipe off any excessive water on the cooker after cooking.

- It can cause odor and discoloration. Wipe off water that is left behind from dew.

### Please contact dealer or service center when either a button of a product or a product itself is not working properly.

### In case of a blackout during cooking, steam from a rice cooker will be released automatically. Thus, the quality of rice is lower than normal.

- Please start cooking with an indicated amount of rice and water.
- Water can overflow if the amount of water in a pot exceeds the indicated level of water usage.
- Please start cooking in a status that steam control cap is installed completely.

### Please clean the body and other parts after cooking.

- After cooking chicken soup, multi cook dishes, and etc., the smell may be absorbed.
- Clean the oven packing, top heater plate, and inner pot every time you cook any of those.
- It can cause alteration or smell.
- Use dry kitchen cleaner or sponge to clean the inner pot, since rough scrub or metallic ones are abrasive to the coating.
- Depending on the using methods or user's circumstances inner pot coating might rise. Please call the customer service for those cases.
- Please, do not pull out the clean steam vent by force.

### Be cautious when steam is being released.

- When the steam is released don't be surprised.
- Please keep the cooker out of reach of children.

### If possible, only use warming function when cooking white rice. Other foods are easily discolored.

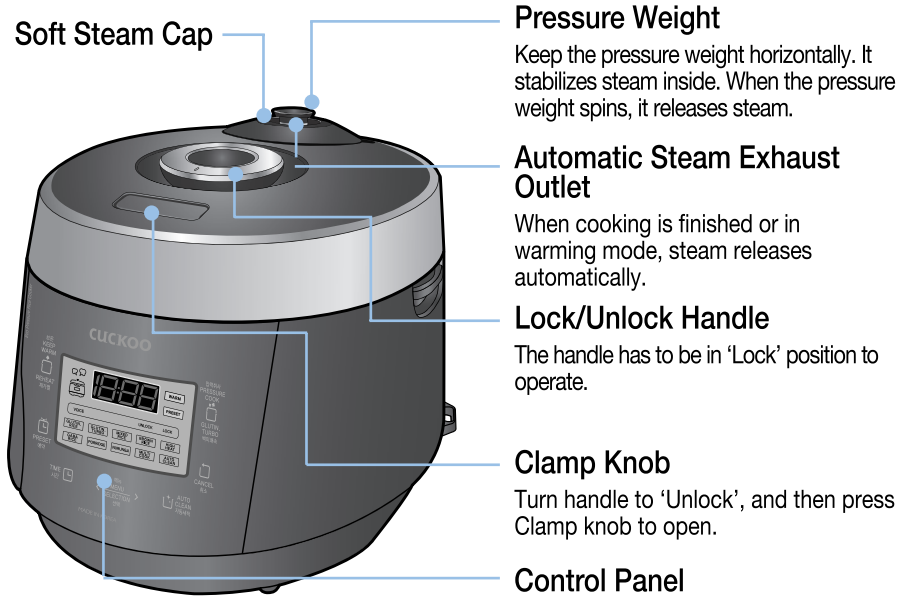
### When you pull out the power plug, don't pull the power cord. Please, safely pull out the power plug.

- If you inflict impact on power cord, it can cause an electric shock or fire.

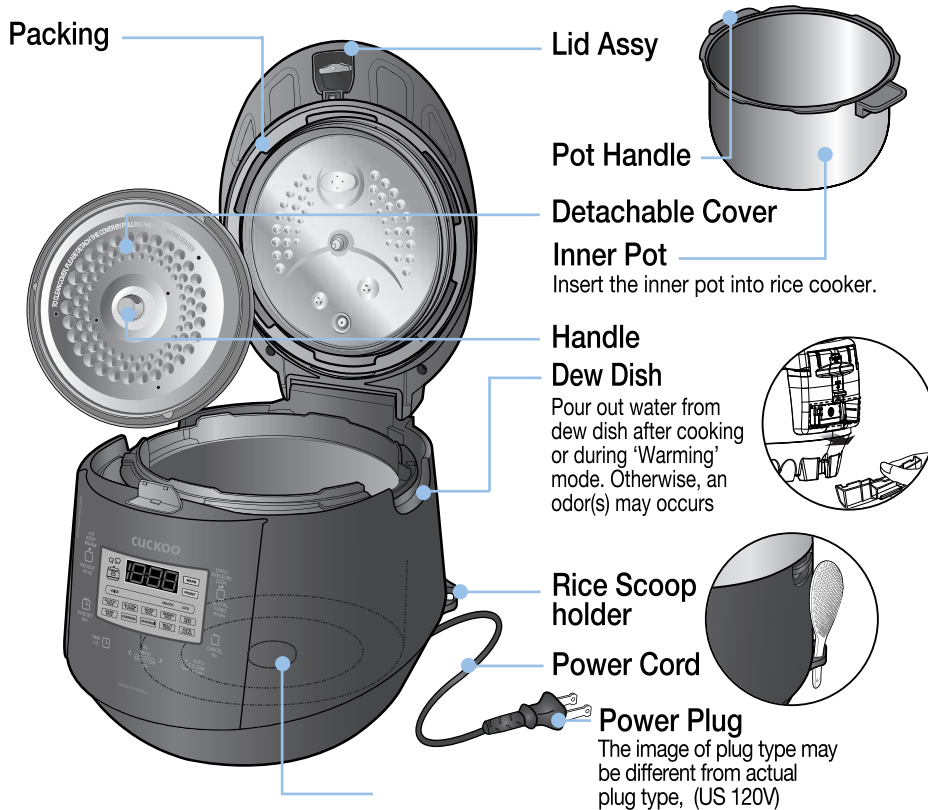


# NAME OF EACH PART

## Name of each part



## Name of each part



## Accessories



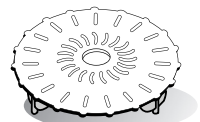
Manual & Cooking Guide



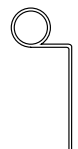
Rice Scoop



Rice Measuring Cup



Steam Plate



Cleaning Pin  
(Attached on the bottom of the unit)

# FUNCTION OPERATING PART / HOW TO SET OR CANCEL VOICE GUIDE FUNCTION



**Keep Warm / Reheat button**  
Used to warm or reheat. (Refer to page 23)

**Preset button**  
Used to preset time. (Refer to page 21)

**Time Button**  
Used to modify preset time (Refer to page 21).  
Used to set GABA and multi cooking time (Refer to page 20~21).

**Menu / Selection button**  
Used to select Glutinous Rice, High Heat Glutinous, Turbo Glutinous Rice, Mixed Rice, High Heat Mixed Rice, Brown Rice, High Heat Brown Rice, Germinated Brown Rice, Porridge, NU RUNG JI, Multi Cook, All-Purpose steaming and Automatic Sterilization(Refer to page 17-18)

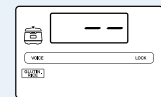
**Pressure Cook/Turbo Button**  
Used to start cooking (Refer to page 17~18)

**Cancel button**  
Used to cancel a selection of mode or releases remaining steam inside of rice cooker.

**Display**

**Auto Clean button**  
Used to operate automatic steam clean function.  
Used to set voice volume, Voice Setting, temperature during 'Warming' mode(Refer to page 15, 23 ).  
Used to set 'Nurungji (crispy rice)'(Refer to page 19).

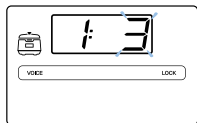
- ※ When you an image like one in the right side on your display, it means the rice cooker is in 'Waiting' mode.
- ※ Press 'Cancel' button to enter the 'Waiting' mode.
- ※ Press the button until you hear the buzzer sound. The image of the plate may different.



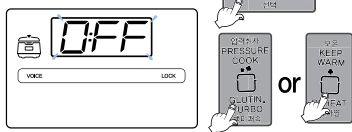
<Screen on standby>

## Voice guide volume control (The function which can control volume and cancel)

When starting the auto clean mode, please press the Auto Clean button for at least 3 seconds.



In order to enter 'Voice Setting' Mode, press 'Auto Clean' button longer than 3 seconds during 'Waiting' Mode. Then press 'Auto Clean' button 1 times to enter the mode.

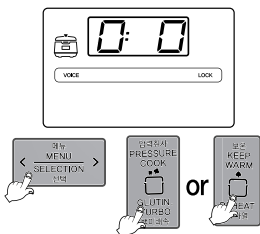


When you set to 'OFF' using 'Menu/Selection' Button, " voice " and " OFF " will be blink and voice function will be turned off. If you want to set up voice volume level, press 'Menu/Selection' button. (Voice volume level 1 to 5)

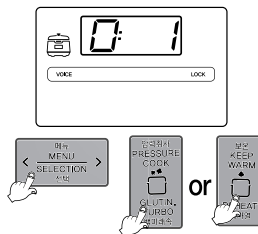
▶ To return to 'Waiting' mode after setting, press 'Pressure Cook/Glutin Turbo or Keep/Reheat' button.

## Voice Setting

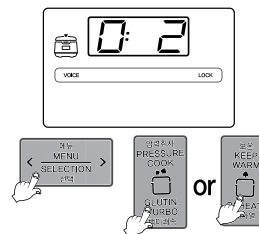
You may select your preferred voice among, 'Korean, English and Chinese.' The default is Korean.



Example) When set to Korean



Example) When set to English voice

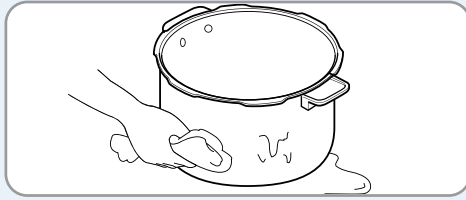


Example) When set to Chinese voice

1. To operate 'Voice Setting Mode', press 'Auto Clean' button at least 3 seconds.
2. After finishing the setting, press 'Pressure Cook/GLUTIN. Turbo or Keep/Reheat' button to return to 'Waiting' mode.



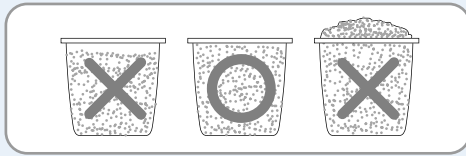
## BEFORE COOKING RICE



### 1

#### Use a dry cloth to clean inner pot.

- ▶ Use a soft scrubber to wash the inner pot.
- ▶ Do not use rough or metallic scrubber. Otherwise, coating will be pilled off.
- ▶ Do not put anything that is metallic and sharp into the inner pot while cleaning. (Fork, spoon, chopsticks, knife, and etc.)



### 2

#### Use measuring cup to measure desirable cooking amount.

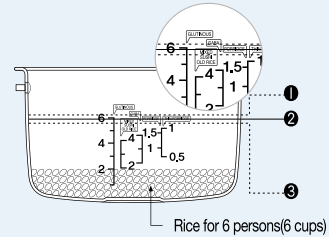
- ▶ Make the rice flat to the top of measuring cup and it is serving for 1 person. (ex: for 3 servings → 3 cups, for 6 servings → 6 cups)

### 3

#### Use another container to wash the rice.

### 4

#### Adjust water level.



- ▶ Place inner pot on the flat surface to adjust water level.
- ▶ The marked lines in the inner pot are water level.
  - 1 If you want to cook old or soft rice, pour more water than measured scale.
  - 2 Glutin. Rice for 6 people (6 cups) pour water to '6'.
  - 3 Overcooked rice: pour less water than measured scale.

### 5

#### Please plug the power cord before inserting inner pot in the rice cooker.

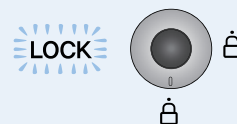
- ▶ Wipe off or remove any substances on the temperature sensor or bottom of the inner pot.
- ▶ Please place the inner pot correctly into the rice cooker.



### 6

#### Plug the power cord and turn the hand to "Lock"

- ▶ The lamp turning on means closed perfectly.

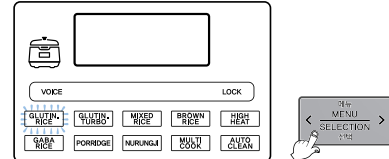


# HOW TO COOK



## 1 Choose menu from 'Menu/Selection' button.

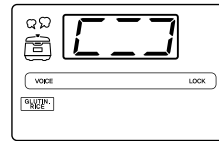
- Check if the removable cover is installed.
- Before cooking, check that the Pressure Weight is well placed horizontally.
- Each time "Menu/Selection" button is pressed, the selection switches in the sequential order, Glutin. Rice → High Heat Glutin. Rice → Glutin. Turbo → Mixed Rice → High Heat Mixed Rice → Brown Rice → High Heat Brown Rice → Gaba Rice → Porridge → NU RUNG JI → Multi Cook → Auto Clean
- If the button is pressed, repeatedly, the menu switches continuously in sequential order.
- In the cases of Glutin Rice, Glutin Turbo, Mixed Rice, Brown Rice, GABA Rice, the menu remains memorized once each cooking is completed, so for continuous use of the same menu, no selection of menu is required.



ex) In case of selecting Glutin Rice.  
 ▶ You can hear a voice, Glutin Rice. when you cook Glutin Rice, automatic steam outlet operates while cooking.

## 2 Start cooking by pressing "Pressure Cook/Glutin.Turbo" Button.

- You must turn lid handle to lock before cooking. Then press the "Pressure Cook/Glutin.Turbo" Button.
- Unless lid handle is not turned to close, you get alarm with "E01", and sound "turn lid handle to lock".

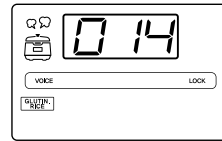


ex) In case of cooking Glutinous.

## 3 Cooking thoroughly

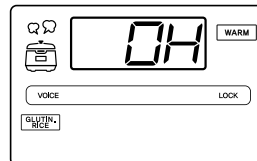
- The cooktime remaining on the display is shown from cooking thoroughly. The cook time is different according to the menu.
- Be careful not to burn yourself from the automatic steam outlet.

ex) In case of 14minutes left.

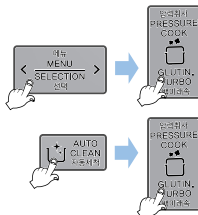
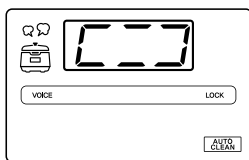


## 4 The end of cooking

- When cooking is completed. warming will start with the voice "cuckoo completed glutinous".
- If you don't want to keep the cooked rice warm, press Cancel for 2 seconds.
- If the lid handle is not working well, take out the steam completely out of inner pot by turning over pressure weight.
- Do not press 'Cancel' button during cooking.



## How to use Automatic Sterilization



Pour water up to Glutinous 2, make sure to close and lock the cover.

Method 1. After choosing automatic cleaning menu by pressing "Menu/Selection" button, and then press "Pressure Cook/Glutin.Turbo" Button.

Method 2. Press Auto Clean in the waiting mode, and then press "Pressure Cook/Glutin.Turbo" Button.

## Melanoizing effect

The cooked rice can be light yellow at the bottom of the oven, because this product is designed to improve pleasant flavor and taste. Especially, melanoizing is more serious at the "Preset cooking" than just "Cooking". It does not mean malfunction.

※ When mixing other rice with Glutinous, Melanoizing effect could increase more than "Glutinous cook" setting.

## What is Blackout Compensation

- This product remembers and maintains previous condition and processes. After blackout, it operates immediately.
- If blackout occurs during cooking, the cooking will be delayed depending on blackout time.
- 'Warming' will be cancel, if blackout occurs.



# HOW TO COOK

## How to use the cooking menu

<b>Glutin. Rice</b>	Used to cook sticky and nutritious white rice.	<b>Mixed Rice</b>	Used to cook by mixing glutinous rice in cereals.
<b>Brown Rice</b>	Used to cook brown rice without germinating.	<b>GABA Rice</b>	Used to cook germinated brown rice.
<b>Porridge</b>	This menu is used to cook porridge.	<b>Nu Rung Ji (Scorched rice)</b>	Used to cook scorched rice when cooking is done.
<b>Multi cook</b>	Used to cook various dishes by setting a time manually.	<b>HIGH HEAT (GLUTIN. RICE/ MIXED RICE /BROWN RICE)</b>	Used to cook more savory and sticky rice
<b>Automatic Sterilization</b>	Used to eliminate smell soaked after cooking.		
<b>Turbo function for Glutinous rice</b>	<ul style="list-style-type: none"> <li>• Press Pressure Cook/Glutin.Turbo button twice after selecting "Glutin.Turbo" menu, and the cooker will go for Glutin.Turbo cooking, which will cut rice cooking time. (Two servings of Glutin.Turbo normally takes 18 minutes or so.)</li> <li>• The mode of Glutin.Turbo does not produce cooked rice as good as normal cooking mode. Use white rice turbo mode only for 4 servings or less.</li> <li>• For better taste of cooked rice, cook rice in Glutin.Turbo mode after macerating rice for 20 minutes or so before cooking.</li> </ul>		

※ After cooking in white rice turbo mode or cooking of small serving, discard water. In case of small servings Glutin.Turbo cooking, more water may be required than other menu.

MENU		COOKING INSTRUCTION	WATER LEVEL	CAPACITY	COOKING TIME
GLUTIN. RICE		Select "GLUTIN. RICE" → Press "Pressure Cook/Glutin.Turbo" button	GLUTINOUS	2 ~ 6 PERSONS	Approx. 30 ~ 39 min
HIGH HEAT GLUTIN. RICE		Select "HIGH HEAT GLUTIN. RICE" → Press "Pressure Cook/Glutin.Turbo" button		2 ~ 6 PERSONS	Approx. 32 ~ 40 min
TURBO GLUTIN. TURBO		1. Press "Pressure Cook/Glutin.Turbo" button twice (2) in a row 2. Select "TURBO GLUTIN. RICE" → Press		2 ~ 4 PERSONS	Approx. 18 ~ 24 min
MIXED RICE		Select "MIXED RICE" → Press "Pressure Cook/Glutin.Turbo" button	MIXED	2 ~ 4 PERSONS	Approx. 42 ~ 48 min
HIGH HEAT MIXED RICE		Select "HIGH HEAT MIXED RICE" → Press "Pressure Cook/Glutin.Turbo" button		2 ~ 4 PERSONS	Approx. 49 ~ 55 min
BROWN RICE		Select "BROWN RICE" → Press "Pressure Cook/Glutin.Turbo" button	GABA	2 ~ 4 PERSONS	Approx. 49 ~ 54 min
HIGH HEAT BROWN RICE		Select "HIGH HEAT BROWN RICE" → Press "Pressure Cook/Glutin.Turbo" button		2 ~ 4 PERSONS	Approx. 53 ~ 61 min
GABA RICE		Select "GABA RICE" → Press "Pressure Cook/Glutin.Turbo" button		2 ~ 4 PERSONS	Approx. 43 ~ 48 min
PORRIDGE	THICK PORRIDGE	Select "PORRIDGE" → Press "Pressure Cook/Glutin.Turbo" button	PORRIDGE	1 ~ 1.5 CUPS	Approx. 95 ~ 107 min
	THIN PORRIDGE		THIN PORRIDGE	0.5 ~ 1 CUPS	Approx. 95 ~ 115 min
NU RUNG JI		Select "NU RUNG JI" → Press "Pressure Cook/Glutin.Turbo" button	GLUTINOUS	2 ~ 4 PERSONS	Approx. 40 ~ 44 min

- ※ When keeping warm, press Cancel to stop and select the desired function.
- ※ When you cook after using options like Multi Cook, the odor may stick (refer to the product care method section to wipe the packing and cover and clean with the auto sterilization function).
- ※ Please soak or boil hard grains such as beans and red beans under water first before start cooking in mixed rice option.
- ※ Cooking time for each option may vary depending on user's environment such as voltage, amount/temperature of water, etc.
- ※ When you see "E" on display, turn the Lock/Unlock handle towards "△" (Unlock), and then turn it back towards "◻" (Lock) for it to work properly. (This does not apply when you turned the handle towards "△" (Unlock) once or more after finishing cooking in the previous cooking.)

# CUCKOO Customized Taste Function / For Nurungji (Korean Crispy Rice Snack)



## CUCKOO Customized Taste Function (cooking temperature customization)

This function allows you to select your preferred temperature level when cooking. Compare to previous model, the temperature level has been fixed, and consumers are able to set the temperature with their preferences.

The initial value is set to 4:0. Please select the level depending on your preferences.

- High level : Select high level if you are cooking grains or want sticky rice.
- Low level : Select low level if you are cooking freshly harvested rice or don't want sticky rice.

## How to use CUCKOO Customized Taste Function

Press the Auto Clean button in the waiting mode for 3 seconds to go to voice setting mode. Press the Auto Clean button 4 times to enter the customized taste setting mode. All options supported by 'CUCKOO Customized Taste' will be displayed.

**1 CUCKOO customized taste setting display**  
press the Auto Clean button for 3 seconds to enter the voice volume setting mode. Press the Auto Clean button 4 more times to go to customized taste setting display. Please refer to the display for the initial values.

**2-1 High level adjusting mode**  
press the Menu/Selection button to change display as shown in the image above.

**2-2 Low level adjusting mode**  
press the Menu/Selection button to change display as shown in the image above.

**3 Setting complete display**  
press the Pressure Cook/Glutin Turbo or Keep Warm/Reheat button to save the set value and return to waiting mode (If you press Cancel or do not operate for 7 seconds, setting will be canceled and you will go back to the waiting mode). (When you press the Auto Clean button, you will enter the stronger Keep Warm setting mode without saving the changed value.)

- 'CUCKOO Customized Taste' function is applied to the following options: glutin rice, High Heat Glutin.Rice, glutin turbo, mixed rice, High Heat Mixed Rice, brown rice, High Heat Brown Rice and GABA rice.
- Set up the step of customized cooking function to taste. The scorch can occur when cooking in high level mode.
- Cook is subject to be set differently depending on the percentage of water content and the condition of rice.

## How to make Nu rung ji

- Turn the Lock/Unlock handle to "Lock" and press menu to select the 'Nu Rung Ji'.
- Press the "Pressure Cook/Glutin.Turbo" button to start cooking.
- When cooking is completed, scoop out the boiled rice. The "Nu Rung Ji" on the bottom of the jar can be prepared for your taste (e.g. scorched rice tea)
  - ▶ "Nu Rung Ji" can be prepared for up to 4 people
  - ▶ For "Nu Rung Ji" cooking, set the water volume at "Glutinous" level.
  - ▶ Not too much washing rice.
  - ▶ If you want enhanced burning nu rung ji, cook after soaking rice in water for 30 minutes.

## How to make more crispy Nu rung ji

When cooking with "Nurungji" option, you can scorch the cooked rice on the bottom in different levels according to your preference.

▶ How to set More Crispy Nurungji function (When you want the cooked rice more "scorched" when cooking nurungji)

When to set More Crispy Nurungji function

When to set More Crispy Nurungji function

- Press the Auto Clean button under waiting mode for 3 seconds or longer to enter the voice setting mode. Press the Auto Clean button 5 times to enter More Crispy Nurungji setting mode.
- When the More Crispy Nurungji setting mode begins, press Menu/Selection to select or cancel More Crispy Nurungji mode. Press Pressure Cook/Glutin Turbo or Keep Warm/Reheat button to select or cancel the mode.
- When you press Cancel or do not operate for 7 seconds, the function will be canceled, and the product will return to the waiting mode.



## HOW TO USE “GABA RICE(BROWN RICE)”

### What is Germinated Brown rice?

- ▶ Brown rice has richer nutrients than polished rice. However, brown rice is rather tough and hard to be digested. By germination, the enzymes in the brown rice are activated, generating nutrients, and are easier to digest.

### Features of Germinated Brown Rice

Germinated brown rice increases nutrients and enhances taste, which is a weak point of brown rice. Germinated brown rice also improves digestion.

- ▶ Taste will be greatly enhanced.
- ▶ Easier to digest and is rich in nutrients.
  - Diabetic hormone is generated improving digestion.
- ▶ Good as a health food for children or adults.
  - Rich with dietary fiber.
- ▶ Germinated brown rice has rich GABA (Gamma Aminobutyric Acid)
  - GABA promotes metabolism in liver and kidneys, suppresses neutral fat, lowers blood pressure, promotes metabolism in brain cells - these effects have been proven by medical science.

### Using “GABA RICE” Menu

- 1 In order to promote germination, soak brown rice for 16 hours in water.**

Method of Pre-germination

  - ▶ Put washed brown rice in an appropriate container, pour sufficient amount of water to soak the rice.
  - ▶ Pre-germination shall not exceed 16 hours. Make sure to rinse the rice clean with flowing water before using “GABA RICE” menu. Be careful not to rinse too much or else the embryos that are required to germinate may wear off.
  - ▶ Unique smell may be generated according to the soaking time of pre-germination
  - ▶ When pre-germination has been completed, wash the rice and insert the inner pot. Pour appropriate amount of water and use “GABA RICE” menu.
  - ▶ During summer or hot temperature environment, an odor may be generated. Reduce germination time and wash clean when cooking.
- 2 Set the Lock/Unlock handle at Lock, press Menu/Selection button to select “GABA RICE”**
  - ▶ When cooking brown rice with or without germination, select “Brown Rice” option and start cooking.
- 3 Press Pressure Cook/Glutin. Turbo button.**
  - ▶ If you press the Pressure Cook/Glutin Turbo button, the brown rice will start to germinate for the set time and cooking will start after germination is complete.
  - ▶ When germinating the brown rice, remaining time will be displayed.

### When the “GABA RICE” is selected, “3H” is indicated in the display

- 1** If smaller germ is preferred, omit pre-germination process. Select “GABA RICE” menu, set-up appropriate germination time, and start cooking (nutrients ingredients do not vary significantly by the size of germ).
- 2** During hot seasons, longer germination time may generate odor. Reduce germination time.
- 3** GABA RICE cooking feeds up to 4 people
- 4** City water can be used for germination. However, filtered or drinkable water is recommended. Germination may not be properly performed in hot or boiled water even after cooking.
- 5** Germination rate and germ growth may differ by the type of brown rice, condition, or period of storing.
  - The brown rice should be within 1 year from harvest, and not long since pounded.
- 6** In GABA RICE mode, preset on 3H may not be possible. If you want to preset the GABA RICE, set up BROWN RICE menu. (See the page 21)
- 7** The taste of rice could be different depending on a kind of brown rice. Use customized taste function or control the amount of water for your taste. (Refer to page 19)
- 8** Depending on the user’s environment or the condition of the rice, the sprout may not be visible.

# HOW TO USE PRESET/MULTI-COOK FUNCTION



## How to Preset Timer for Cooking

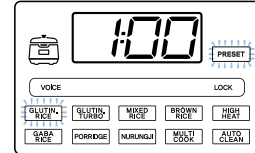
- Turn the Lock/Unlock handle to the lock position and a lock icon will be displayed on the screen. Then press the “preset” button.

  - ▶ How to use Preset/Multi Cook function
  - ▶ Set the preset time in 7 seconds after pressing the Preset button.
  - ▶ To set the preset time during the warming mode, stop the warming mode by pressing the Cancel button prior to setting the preset time.
- Press the Time button to set the preset time.

  - ▶ Each time you press the Time button, 10 minutes are added to the preset time.
  - ▶ Preset time ranges from 1 hour to 12 hours and 50minutes
- Press the Menu/Selection button to select the menu.

  - ▶ GABA rice option cannot be preset with 3H setting. If you want to preset, select the “Brown Rice” option.
  - ▶ Multi-Cook option can be preset after setting the time for the option. When the set time is longer than 60 minutes, the preset time will be set as 2 hours.
  - ▶ If you do not set a specific option, the default will preset as Glutin. Rice.
- Press the Menu/Selection button to select the menu.

  - ▶ After pressing the preset button, if you don't operate in 7 seconds, the preset mode will start automatically.
  - ▶ When the preset mode begins, the preset light will stop blinking and the preset time will go down by minute until it starts the preset cooking. (While the preset cooking continues, the “:” sign between the hour and minute will blink).



<Preset mode display>



- ▶ The preset time displayed on the screen is the remaining time until completed cooking. (The completion time may vary depending on either the use condition or the cooking capacity)

## Precautions for Preset Cooking

- In case of preset cooking**

  - ▶ If the rice is old and dry, the result may not be good
  - ▶ If the rice is not well cooked, add more water by about half-scale.
  - ▶ If the preset time is longer, melanization could be increased.
- The change of preset time**

  - ▶ Press “cancel” button for more than 2 seconds and restart it to change the preset time

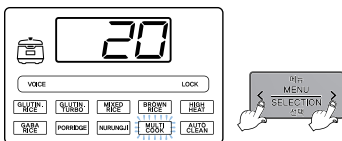
## How to Use Multi-Cook and Preset Time

- Turn the top handle to “Lock” and press the menu to select the Multi-cook.

  - ▶ When selecting Multi-cook, the display indicates cooking time to be 20 minutes.
- Set the time with Time Button.**

  - ▶ Each time you press “Menu/Selection” button, the time increases 5 minutes.
  - ▶ Available setting time is 10 ~ 90 minutes.
- Press “Pressure Cook/Glutin.Turbo” button.**

  - ▶ The resting time will be displayed when the Multi-cook mode begins.





## FOR THE BEST TASTE OF RICE

### Caution

For the best taste of rice, check the following points carefully.

When measuring the rice, Use the measuring cup. (The amount of the rice may vary depending on the quality of the rice.) Place the inner pot on a flat surface and adjust the water to water level in the inner pot.

If possible, buy a small amount of rice and keep the rice some place where it ventilates well and avoids a direct ray of light. It can prevent evaporation of rice moisture. If the rice has been unsealed for long, rice can be dry and stale. In this case, you should pour the half of water more. It's tastier.

If possible, do not use the preset time function when rice is too dry and pour the half of water more. If you set "Preset" over the 10 hours or "Preset" dried rice, rice can be crisp or half cooked. Even worse condition, rice can be cooked different tastes each level.

If rice is kept warm for a long period of time, rice color will change, as well as odor.

Wipe the top cover heating part well for any rice or external substance.

If rice is kept warm for a long period of time, rice color and the odor will change.  
It's better to set "warm" less than 12 hours.

When measuring the rice, use the measuring cup. (The amount of the rice may vary depending on the quality of the rice.) Place the inner pot on a flat surface and adjust the water to the water level in the inner pot.

If amount of water and amount of rice is different, the rice can be crisp or hard.

If possible, buy a small amount of rice and keep the rice some place where it can ventilate well and avoids a direct ray of light. It can help prevent evaporation of rice moisture. If the rice has been unsealed for long, rice can be dry and stale. In this case, you should pour half of water more. It's tastier.

If the rice is too dry, rice can be crisp even though it is measured properly.

If possible, do not use the preset time function when rice is too dry and pour half of water more. If you set "Preset" over the 10 hours or "Preset" dried rice, rice can be crisp or half cooked. Even in worse condition, rice can be cooked with different taste on each level.

If the preset time is longer, the melanoizing effect could be increased.

Wipe the top cover heating part well for any rice or external substance.  
Especially clean the top of the cover for external substance.

### Cautions for Keeping Warm

It will be hard to open the lid during warming, or right after it has finished cooking, So push the pressure weight to the side and allow the steam to release.

Make sure the handle is in the "Lock" position during warming or reheating.

It is recommended to evenly stir the cooked rice after cooking. The rice taste is improved. (For a small quantity of rice, pile up the rice on the center area of the inner pot to keep warm)

Do not keep the scoop inside the pot while warming the rice. When using a wooden scoop it can create serious bacteria and odors.

Do not keep the rice spatula inside the pot while warming the rice. When using a wooden rice spatula, it can create serious bacteria and odors.

Do not mix small amount of rice or leftovers with the rice under keeping warm. Doing so may cause an odor. (Use a microwave oven for the cold rice.)

It will be hard to open the lid during warming or right after it has finished cooking. So push the pressure weight to the side and allow the steam to release.

Make sure the handle is in the "Lock" position during warming or reheating.

It would be better to warm the rice for less than 12 hours because of odors and color change. The cooked rice, which cooked by pressure cooker, is more prone to changing color than the rice cooked by general cooker.

During warm mode, the rice can rise and turn white. In this case, mix the rice.

It is recommended to evenly stir the cooked rice after cooking. The rice taste is improved. (For a small quantity of rice, pile up the rice on the center area of the inner pot to keep warm).

The mixed and brown rice cannot be in such good condition as white rice while in warm function due to their characteristics. Therefore, do not keep mixed and brown rice in function for a long period of time.

### When Odors are Rising During the Warming Mode

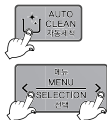
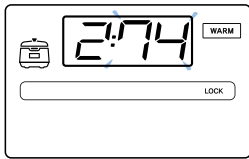
- ▶ Clean the lid frequently. It can cause growth of bacteria and odors.
- ▶ Even though exterior looks clean, there might be germs and it can cause odor so please be sure to use automatic sterilization (steam cleaning) menu for cleaning. Clean the inner pot completely after automatic cleaning function is done. (Refer to page 25)
- ▶ Clean the inner pot properly to prevent rice from smelling after you cook soups and steamed dishes.



# TO KEEP COOKED RICE WARM AND TASTY

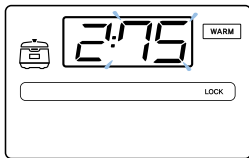
## Controlling Method of Warming Temperature

If the temperature in the rice cooker is not set properly, an odor or the color of the rice may change even though it is cleaned frequently and boiled up. Temperature needs to be set.



❶ 1. Press the Auto Clean button for 3 seconds in the waiting mode to enter the voice mode. Press the Auto Clean 2 times once to enter the warming temperature setting mode. The display will show as seen in the image. 74°C current keep warm temperature will show.

❷ 2 Press Menu/Selection button so that the display shifts 74→75→76→77→78→79→80→89→70→71→72→73



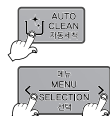
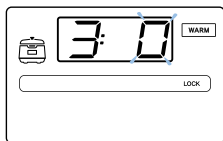
❸ 3 After setting the desired temperature, press Pressure Cook/Glutin Turbo or Keep Warm/Reheat button to automatically input the selected temperature and enter the waiting mode (if you press Cancel or do not operate for 7 seconds, setting will be canceled and you will go back to the waiting mode.) (When you press the Auto clean button, you will enter the customized Keep Warm setting mode without saving the changed value.)

### Device Temperature Control

1. When you smell bad odors and the rice is too watery: The keep warm temperature is too low. In this case, increase the “Keep Warm” temperature by 1-2°C.
2. When the rice has a yellowish color or is too dry: The Keep Warm temp is too high. In this case decrease the “Keep Warm” temperature by 1-2°C.

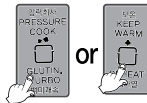
## How to Operate My Mode Function.

Use it while opening the lid when there is too much water or rice becomes too soft.



❶ 1 Press the Auto Clean button for 3 seconds in the waiting mode (“- -” displayed on the number screen) to go to voice setting mode. Press the Auto Clean 3 times to enter the customized Keep Warm setting mode.

❷ 2 Press the Menu/Selection button so that the display shifts 0→1→2→-2→-1→0



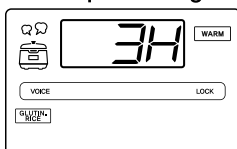
❸ 3 Set the desired value and press Pressure Cook/Glutin Turbo or Keep Warm/Reheat button to automatically input the set value and enter the waiting mode. (When you press the Auto Clean button, you will enter the customized taste setting mode without saving the changed value).

1. If too much water is spilled out when you open the lid : Press “Menu/Selection” button to raise the setting mode.
2. If the edge of rice is too soft : Press “Menu/Selection” button to reduce the setting mode.

## Having a Meal

► If you want to have warm rice, press the “Keep warm/Reheat” Then “Keep warm/Reheat” warm function will be started and you can eat fresh rice in 9 minutes.

<Keep warming>



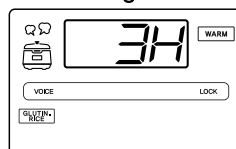
“3H” on display means that the cooked rice has been kept warm for 3 hours.

<Reheating>



The remaining reheat time will show in minutes while the Keep Warm light is blinking with the “0” sign on display twirling.

<Finishing reheat>



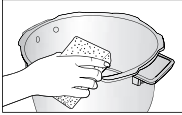
When reheating is done, Keep Warm function will start with the voice that says “3H”, and the amount of time that the Keep Warm has been functioning will be displayed.

- The frequent use of the “Reheat” function may cause the cooked rice to be discolored or dried. Use it once or twice per day.
- If a separate heating appliance or gas burner is used to cook rice, put the cooked rice into the rice cooker and press the “Keep Warm/Reheat” button to keep the rice warm. At this time, “0H” is shown on the display. (Like this, transferring hot rice to a cold cooker may cause the rice to be discolored or develop an odor)



# HOW TO CLEAN

## INNER POT



Wipe the inner, upper, and outer parts of the inner pot of any alien substance.

## TOP COVER



If there is rice water left on the lid, please wipe it out with a wet towel. The center of the lid is made out of metal so beware when cleaning.

## OVEN PACKING



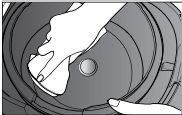
Wipe the top cover with a damp cloth. Be careful when cleaning the top heater

## DEW DISH



Rice water from cooking is designed to gather to the dish through the steam outlet so please wipe it clean with a wet towel after cooking.

## INNER BODY



If there are foreign substances stuck on the temperature sensor, remove them without damaging the metal plate. Cleanly wipe the foreign substances or moist on the heat plate.

## CONTROL



In case the cauldron is stained with cooked rice broth or foreign matter, wipe the cauldron with a damp dishcloth. Using a rough scouring pad, brush, or etc. may damage cauldron surface. If the buttons are not functioning correctly, please contact our customer care service.

## MAIN UNIT



Wipe the main unit with a damp cloth.

## LID OPEN BUTTON

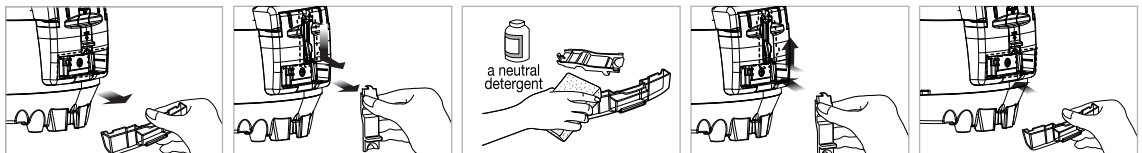


Before or after use, please wipe around the Lid Open button and remove rice water or any other foreign substances using a wet towel. Before or after use, if the Lid Open button does not work, please contact customer service.

### ※ Caution

- Do not clean the inner pot with any sharp cutlery inside (fork, spoon, chopsticks, etc.).
- The coating of the inner pot may peel off.

## How to Clean Dew Dish



1 Separate the dew dish.

2 Separate the drain ditch cap by pushing it down.

3 Clean the drain ditch cap and dew dish with a neutral detergent.

4 Securely put in the dew dish after cleaning

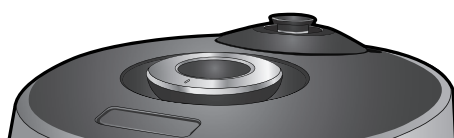
5 Insert the dew dish firmly by pressing it in direction of the arrow.

## How to Clean The Pressure Weight Nozzle

### If the valve hole of the pressure weight part is clogged, puncture it with the cleaning pin

- The valve hole of the pressure weight allows steam to release. Check regularly to ensure that it is not blocked. If the valve hole of the pressure weight is blocked, the hot steam and hot content within the cooker can cause serious injury.

※ Do not use the cleaning pin for any other use except to clean the valve hole of the pressure weight.

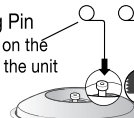


Soft steam cap



Pressure Weight

Cleaning Pin  
※ Attached on the Button of the unit



Alien substance

### How to Disassemble the Pressure Weight

- Under the Lock/Unlock handle is the steam cap that guards the pressure weight. To remove the pressure weight, remove the steam cap, turn the pressure weight counter-clockwise while pulling it up, and keep turning until it comes out.
- Puncture the clogged valve hole with the cleaning pin and reassemble it by turning it clockwise.
- When the pressure weight is properly assembled, it can freely be turned.



## Detachable Cover & Pressure Packing

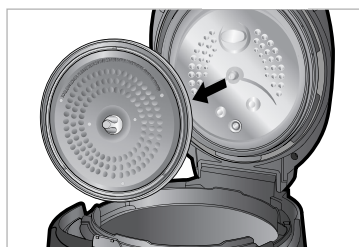
After cleaning detachable cover, put it back on the lid.

Unless detachable cover is mounted, preset cooking cannot be done. (Alarm may sound while keeping warm.)

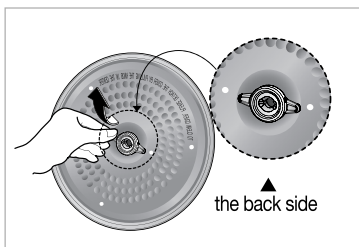
-Clean the detachable cover to prevent odors.

-Clean the body and cover with a dry dishtowel. Do not use metallic scrubbers

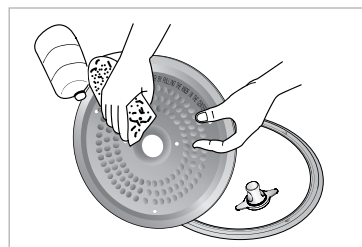
-Do not put materials like screws into the holes on the detachable cover. Check the back cover and front cover.



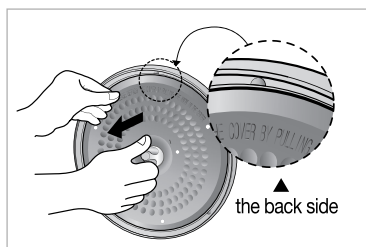
① If you pull out the detachable cover, indicated by the arrow, it can be easily separated.



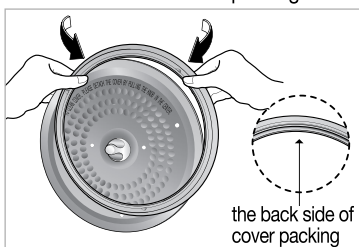
② When cleaning the detachable cover, hold and pull out the both side wing of the cover, and then separate the handle and the rubber packing.



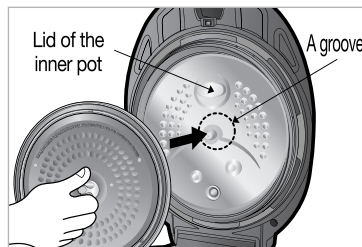
③ Frequently, clean the cover with a sponge and a neutral detergent.



④ Please put the detachable cover.

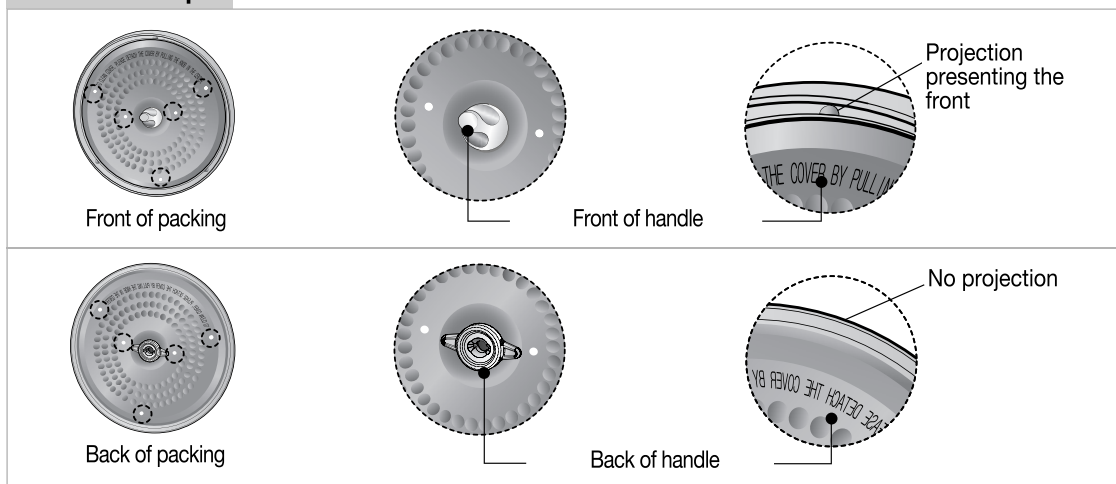


⑤ When you fix the rubber packing into the detachable cover, hold it between and put it in the edge of the detachable cover by turning it.



⑥ When putting the cover into the lid, press the cover handle after fitting the handle into the groove indicated by the arrow.

### Correct Example



※ Do not put substances like a screw into hole of detachable cover.

※ Look in the back cover and the front cover.



# HOW TO CLEAN

The all-stainless cover is not only delamination-free and easy to clean, but it also lasts long, In addition, CUCKOO's special stainless CSV-a CUCKOO's patented technology, improves the product's durability and makes it easier to clean.

## How to install the Double Motion Packing (Pressure Packing)

- proper maintenance of the pressure packing helps keep high airtightness, adds durability to packing and ensures the taste of the food.
- Read the directions below carefully to install your packing properly.

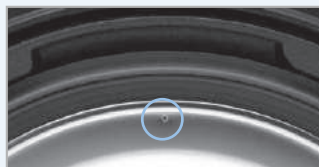
### 1 How to remove and clean the pressure packing



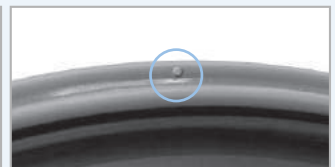
- ① Unplug the power cord and wait until the pot cools down before opening the Top Cover.
- ② To remove the pressure packing, hold it as shown in the picture above and pull it out.
- ③ After hand washing it with a neutral cleaning liquid and a sponge, wipe it clean with a well wrung dish cloth.

### 2 How to reassemble the pressure packing

► Figure.1

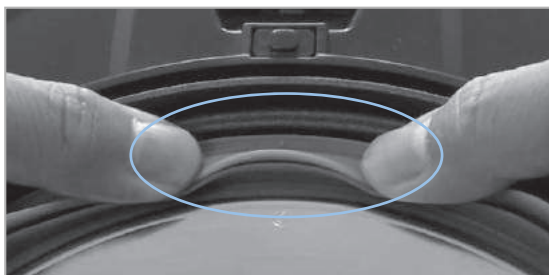


Standard notches on the Inner Pot lid.



Standard points on the pressure packing.

- First match the standard notches on the Inner Pot lid with the standard points on the pressure packing following the numerical order (1, 2, 3, 4, 5, 6). Then, press the outer rim of the packing to insert it into the groove. To reassemble the pressure packing follow the order described below:



- ① As the Figure 1 shows, put the point #1 on the pressure packing with the standard notch #1 on the Inner Pot lid together before pressing the outer rim of the packing to insert it into the groove. Repeat with points #2 to #6.
- ② After matching the standard points 1 to 6, press the rest of the packing into the groove by pushing on its outer rim.



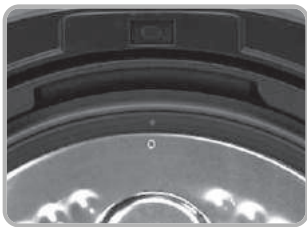
## 3 How to double check whether the packing is well assembled



Since a badly assembled packing can cause the rice to be half-cooked or burned by steam leakage, double check the packing thoroughly as described below.


### ① Visual inspection

Normal assembly




- check the entire circumference carefully for any crack or damage between the Inner Pot lid and the pressure packing.


Abnormal assembly



(look for parts sticking out of the inner)



(look for parts sticking out of outer rim)



(look for parts sticking out of damaged parts)

### ② Physical inspection



- Check if the pressure packing is thoroughly put into the groove by rubbing the inside rim of the packing with a finger around the entire circumference as shown in the picture above.
- Check if the pressure packing is properly put into the groove of the Inner Pot lid by pushing the outer rim with a finger around the entire circumference as shown in the picture.
- Check if the pressure packing is thoroughly put into the groove by pushing the inside of the rim packing with a finger around the entire circumference as shown in the picture.

### ③ Water boiling test

- Pour water in the Inner Pot up to water level 2 (for "Rice") and press the Menu/Selection button to select the self-cleaning mode. Then push the Pressure Cook/Turbo button.
- Within 10 minutes, the pressure regulator weight will start rattling and hissing while emitting steam. If there is no steam coming out from the pot other than through the pressure regulator weight the packing has been properly installed.
- If steam comes out from other parts, stop the test and pull out the power cord. Wait until the pot cools down before removing the pressure packing from the lid. Once reinstalled repeat the boiling test.
- For a more precise water boiling test, you can wrap plastic around the circumference of the closed Top Cover. By doing so, you can easily check where the steam leakage is.



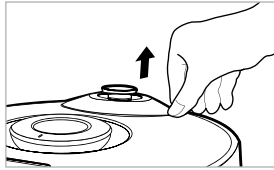
- If you still have a problem with reassembling the packing, please contact our Customer Service.



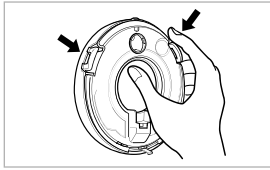
## HOW TO CLEAN

### How to clean the soft steam cap

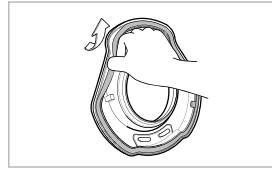
※ Do not touch the surface of the soft steam cap right after cooking. You can get burned.



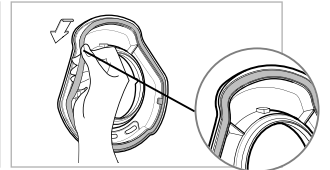
❶ Peel off the soft steam cap as shown in the image above by grasping the dented part with your fingers and pulling to the side while lifting gently.



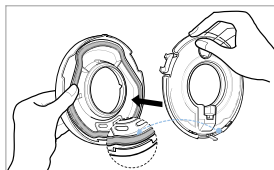
❷ Disassemble soft steam cap in the rear by pressing in the direction of arrow and wash it frequently with a neutral detergent of sponge.



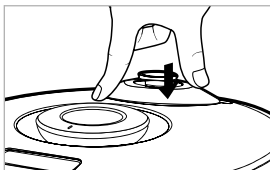
❸ Disassemble the rubber packing in the direction of the arrow.



❹ When fitting the rubber packing into the plate, please make sure the packing is facing the correct direction.

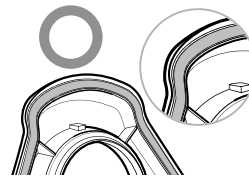


❺ When you are putting the soft steam cap together, match the bump on the bottom, press it towards the arrow and make sure the hook in the front is locked.



❻ When installing the soft steam cap, insert the cap firmly by pressing it in the direction as shown above.

#### How to check if your packing has installed properly



Correct



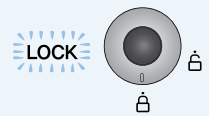
Wrong

※ Carefully insert the packing the correct way.

### How to use the handle

1. After cooking, turn the handle from “Lock” to “Unlock” to open
2. After cooking, turn the handle from “Lock” to “Unlock” turn the handle to open.  
If there is unreleased steam in the Inner pot it might be hard to turn the handle. In this case twist the pressure weight and let the excess steam out. Do not open by force.
3. Handle must be turned to “Unlock” when opening and closing.

• If the lamp does not turn on, it would not operate the “Cook” and “Preset” buttons. Make sure the handle is located in “Lock”.

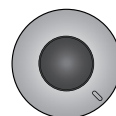


### When top cover does not close perfectly

Do not try to close the top cover by force. It can damage your cooker and cause problems.



1. Check to make sure the inner pot is place correctly inside the main body.
2. To close the top cover turn the handle to unlock shown in the picture on the right.



3. If there is excess steam inside the inner pot it might be difficult to lock the handle. Twist the pressure weight and allow the excess steam to release. Then try to turn the handle again.