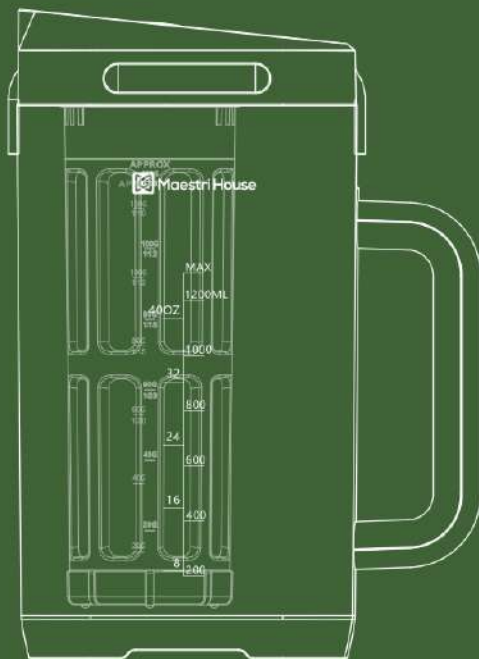




Maestri House

Cold Brew Coffee Maker Instruction Manual



Model: MHCB02

CONTENTS

| | |
|----------------------------------|---|
| Pre-use Instructions | 2 |
| Component Overview | 2 |
| Tips for Better Cold Brew | 3 |
| Let's Make Some Cold Brew | 3 |
| Product Specifications | 6 |
| Cleaning Instructions | 7 |
| Precautions | 7 |
| Included Accessories | 8 |
| Disposal and Recycling | 8 |
| Customer Support | 8 |
| About Us | 8 |

Thank you for choosing the Maestri House Cold Brew Coffee Maker. Please read the manual carefully before using. If you need assistance during use, please contact us by email at support@maestrihouse.com.

Pre-use Instructions

Carefully open the packaging box, retain all packing materials, and remove the cold brew coffee maker to check if it is complete. Thoroughly read the instruction manual to ensure all components are included. Before the first use, rinse the product with purified water.

Container Body Material: Tritan

Tritan is a new generation copolyester developed by our company. It is BPA-free and designated for use in baby products in Europe and America, ensuring its safety for your peace of mind.

Component Overview



- A** Filter Outer Lid
- B** Filter Inner Lid
- C** Filter Basket
- D** Filter Bottom Lid
- E** Container Sealing Lid
- F** Exhaust Valve
- G** Sealing Lid Latch
- H** Container Handle
- I** Container Body

Tips for Better Cold Brew

1 Grind Size:

Typically, coarse coffee grounds (similar to breadcrumbs) are used for cold brewing. The grind size can be adjusted according to personal taste preferences.

2 Coffee-to-Water Ratio:

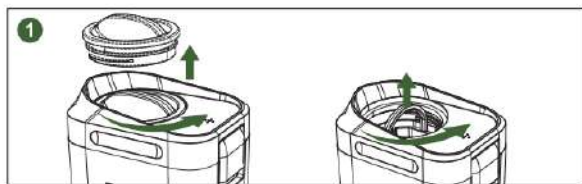
Depending on personal taste, a coffee-to-water ratio ranging from 1:10 to 1:15 is recommended for cold brewing.

3 Steeping Time:

Cold Brew Coffee typically requires refrigeration and steeping for 12-24 hours to achieve optimal flavor and texture, and it is recommended to consume within 24 hours.

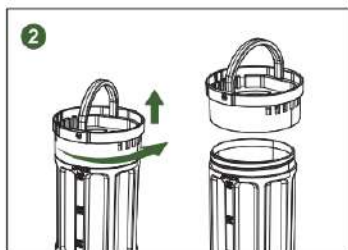
Let's Make Some Cold Brew

1. Unscrew the filter outer lid counterclockwise, lift the filter inner lid handle, and slowly unscrew the filter basket counterclockwise.



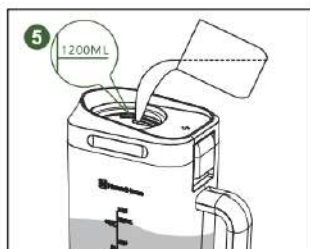
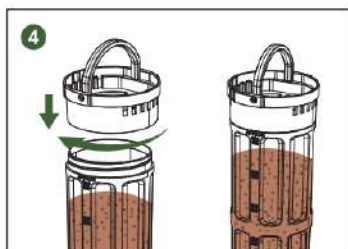
2. Remove the filter inner lid by turning it counterclockwise.

3. Using a coffee scoop, add the appropriate amount of coffee grounds to the powder cylinder according to its scale markings. For greater accuracy, you can also weigh the coffee using a coffee scale before adding.

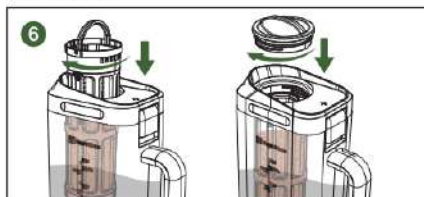


4. Screw the filter inner lid back on clockwise and set aside.

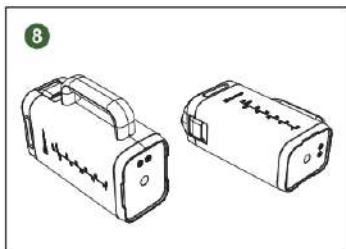
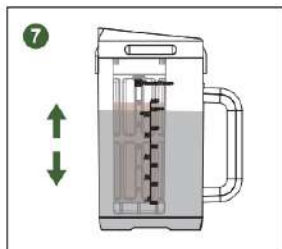
5. Add the appropriate amount of purified water into the transparent container, using the scale on the body of the container for measurement.



6. Insert the filled basket cylinder assembly, tighten it clockwise onto the container sealing lid, turn the filter inner lid handle of the powder store to the right, and tighten the filter outer lid.



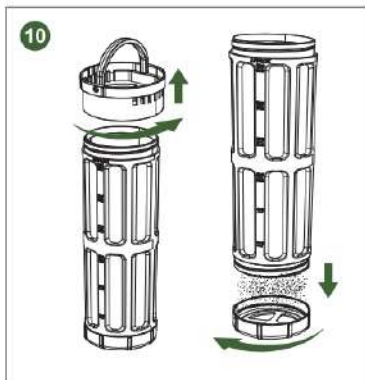
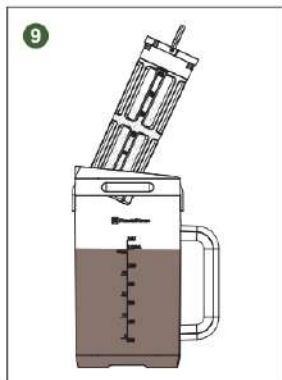
7. Gently shake the container up and down to ensure the coffee grounds are fully soaked.
8. Place the cold brew coffee maker in the refrigerator, either upright or horizontally, to ensure thorough soaking of the coffee grounds.



9. After 12 hours, remove the cold brew coffee maker, unscrew the filter basket assembly counterclockwise, and let it drain over the mouth of the coffee maker.

Note: At this stage, you can gently open the filter outer lid to accelerate the draining process. Once draining is complete, shake the coffee liquid well to enjoy your delicious cold brew coffee.

10. Discarding Coffee Grounds: Turn the filter bottom lid base cover clockwise, shake the cylinder up and down, and rinse off the remaining coffee residue with water.



● Quick Coffee Extraction Based on Coffee-to-Water Ratio:

1. Refer to the jug's volume markings and add 1200ml of purified water for use.
2. Depending on personal taste, adjust the coffee-to-water ratio by adding the corresponding amount of coffee grounds as indicated on the powder cylinder:

| Coffee-to-Water Ratio | Add Coffee Grounds |
|-----------------------|--------------------|
| 1:10 | 120g |
| 1:12 | 100g |
| 1:15 | 80g |
| 1:20 | 60g |

Product Specifications

| | |
|---------------------------------|------------------------|
| Product Name | Cold Brew Coffee Maker |
| Product Model | MHCB02 |
| Container Body Capacity | 40OZ(1200ml) |
| Powder Cylinder Capacity | 4.25OZ(120g) |
| Filter Fineness | 350 mesh |
| Product Dimensions | 172*94*236mm |
| Product Weight | 630g |

Cleaning Instructions

1. Open the filter outer lid , remove the filter basket and all components, rinse all parts thoroughly with water, and allow to dry.
2. The transparent container body can also be placed in a dishwasher for cleaning.
3. Do not place the filter outer lid in the dishwasher as high temperatures can accelerate the aging of the sealing ring, leading to a loss of seal.
4. Do not place the filter basket in the dishwasher to avoid damage to the filter mesh due to water pressure.

Precautions

- When adding water, do not exceed the MAX line on the container body to avoid overflow when the filter basket is inserted.
- The water level marking on the container body indicates the volume without the coffee powder and filter basket.
- The capacity marking on the filter basket is an estimate; variations in coffee bean roast and grind size will affect this.
- During the initial stages of cold brew extraction, it is normal for the coffee powder to emit a small amount of gas, causing tiny bubbles around the sealing lid; these will dissipate after a few minutes.
- When the cold brew coffee maker is placed upright, the absorption of water by the coffee grounds may cause the water level to drop, preventing some of the grounds from being fully submerged.
- Staining of the filter after use due to coffee residues is normal and does not affect its functionality.
- Do not place the cold brew coffee maker in the corners of the refrigerator or in the freezer, as freezing may cause damage.
- Avoid storing corrosive or fermenting materials to prevent damage to the coffee maker.

Included Accessories

- ▶ Cold Brew Coffee Make * 1
- ▶ Coffee Scoop * 1
- ▶ Cleaning Brush * 1
- ▶ Instruction Manual * 1

Disposal and Recycling



Please follow local waste regulations for disposing of the packaging material. This product should not be treated as household waste when discarded. It must be taken to designated recycling facilities. Thank you for your contribution to environmental conservation.

Customer Support

Maestri House provides a 1-year warranty on all products.

This warranty is valid and enforceable if you have purchased a new product from us or from one of our authorized retailers or resellers in a jurisdiction where we sell our products. If you have any further questions or concerns, please feel free to contact us at

support@maestrihouse.com

About Us

Maestri House is a brand dedicated to those who love crafting their own coffee, offering stylish, functional, and enjoyable coffee equipment and services. For more information about our products and services, please visit our official website at

www.maestrihouse.com

尺寸：110x160mm

材质：100g铜版纸

工艺：四色双面印刷 过哑膜

折页方式：骑马钉