

iHome

Model: iBTW112

WIRELESS POWERBOOST
 FAST WIRELESS + USB CHARGING ALARM CLOCK



Quick Start Guide
 Questions? Visit ihome.com



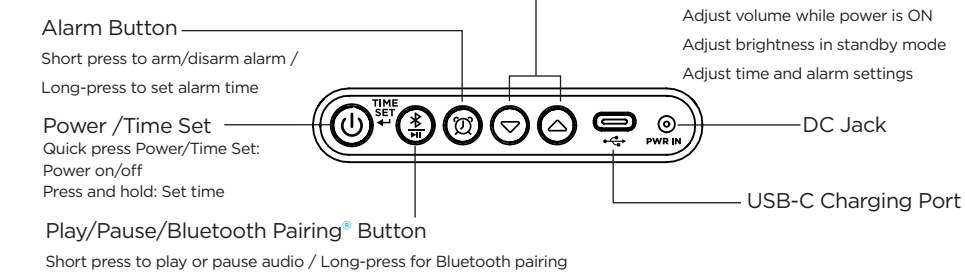
Front



The Display

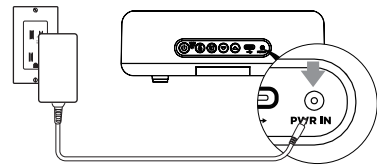


Back Of Unit



Connecting the unit

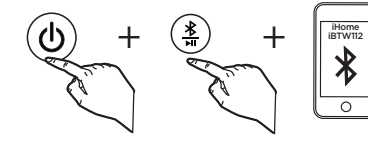
Connect the included AC adapter to the DC jack located on the back of the unit and connect the other end to a working wall outlet.



Manual Bluetooth® Pairing

Turn on your Bluetooth device and make it 'discoverable' by turning on Bluetooth mode.

- Press the Power Button on the iBTW112.
- Press and hold the Bluetooth Pairing Button on the back of the iBTW112 until the Bluetooth, pairing icon flashes to indicate the unit is in pairing mode.
- Select "iHome iBTW112" on your device's Bluetooth menu to connect!
- If pairing is successful, the Bluetooth indicator * appears solid on the clock display, indicating the iBTW112 is ready to play music.
- To reset Bluetooth settings, press and hold the Bluetooth Pairing Button for 10 seconds.



Using Wireless Charging

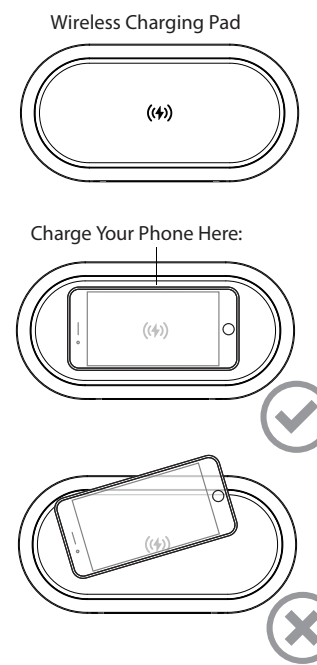
This unit will wirelessly charge phones. Place device face up on charging pad.

Check the lightning icon on the iBTW112 display for charging status:

- Slow blinking lightning icon: Device is charging properly.
- Solid lightning icon: Device is charged.
- Rapid blinking lightning icon: Device is not charging properly. Reposition device.

Note: The lightning icon may continue to blink slowly when iOS devices are fully charged.

CAUTION: Remove metal protective from phone before charging. When charging phone, do not place magnetic-stripped or other metal objects on the charger. Doing so could damage the object or this unit.



Setting your clock time

Press and hold Power/Time Set Button until the display flashes. (By default, Bluetooth time Sync is set to ON, ON is flashing on display).

- Press Δ or ∇ Button toggle Bluetooth time Sync ON or OFF, tap Power/Time Set button to confirm.
- Manual time set only enable when Bluetooth time sync is OFF:
- Press Δ or ∇ Buttons to set Hour, tap Power/Time Set button to confirm.
 - Press Δ or ∇ Buttons to set Minute, tap Power/Time Set button to confirm and complete clock time setting.

Setting and Using the Alarm

This unit features single alarm which can be set to different times and alarm sources. Each is set in the same way.

Note: Each step must be completed while display is flashing or setting will time-out with any changes saved.

1. Press and hold the Alarm Button for 2 seconds until the display flashes. A beep sounds.
2. Press Δ or ∇ Button to adjust the alarm hour. Press Alarm button to confirm.
3. Press Δ or ∇ Button to adjust the alarm minute. Press Alarm button to confirm.
4. Press Δ or ∇ Button to adjust the alarm volume to the volume. Press the Alarm Button to confirm the alarm volume setting.
5. Press Δ or ∇ Button to select the desired wake-to alarm source. Press Alarm Button to confirm the wake-to-alarm source.
6. Press Δ or ∇ Button to select the desired wake-to alarm sources:
 • Alarm Tone 1 • Alarm Tone 2 • Alarm Tone 3 • Alarm Tone 4 • Bluetooth®
7. Press alarm Set Button to confirm and complete alarm setting. (Once alarm is enabled, press alarm button again to disable the alarm)
8. When alarm is sounding, press any button to mute the alarm.

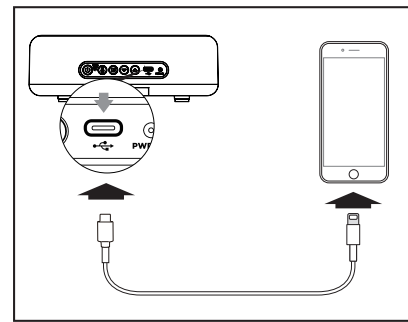
To Adjust Dimmer settings:

In Power off mode, LED display brightness can be adjusted using the Δ and ∇ buttons. Press Δ button increase display brightness, press ∇ button reduce display brightness.

Back

Charging Devices Via USB-C Port

1. Connect the standard size end of a USB-C cable (not included) to the USB-C port on the back of the unit and connect the other end to the charging port on your device.



2. Monitor the charging on your device. Some devices use a proprietary charging method and will not charge using the USB-C port. If this happens, you must charge your device using the charger that came with it.

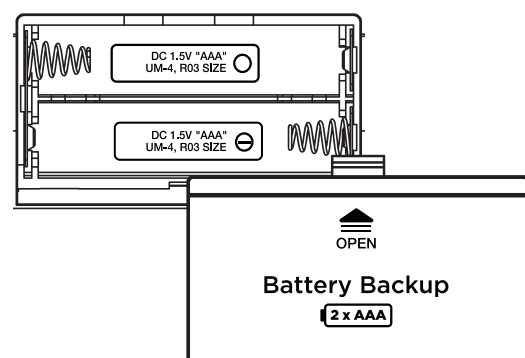
NOTE: Unit must be plugged into working outlet to charge devices.

Replacing and Installing Clock Backup Battery

The unit uses two AAA back-up battery(not included) to provide continuous alarm operation and clock settings in the event of a temporary power failure. When the battery icon on the clock display is flashing, it is time to replace the back-up battery.

The battery compartment is located on the bottom of the unit.

1. Press in and push down on the battery door to open and remove the battery door.
2. Install 2 new "AAA" batteries, matching the (+/-) markings in the battery compartment.
3. Replace the door.



IMPORTANT SAFETY INSTRUCTIONS

Please heed all warnings, read and follow all instructions and keep these instructions handy for future reference.

1. Do not use this product near water.
2. Do not block any ventilation openings. Install in accordance with the manufacturer's instructions.
3. Heat – This product should be situated away from heat sources such as radiators, heat registers, stoves or other appliances (including amplifiers) that produce heat.
4. Only use attachments/accessories specified by the manufacturer.
5. Unplug this product during lightning storms or when unused for long periods of time.
6. Damage Requiring Service – This product should be serviced by qualified service personnel when:
 - Plug has been damaged.
 - Objects have fallen into or liquid has been spilled into the enclosure.
 - The unit has been exposed to rain. The unit has been dropped or the enclosure damaged.
 - The unit exhibits a marked change in performance or does not operate normally.
7. No naked flame sources, such as lighted candles, should be placed on this product.
8. Attention should be drawn to the environmental aspects of battery disposal.
9. This product is suitable for use in tropical and/or moderate climates.
10. WARNING: To reduce the risk of fire or electric shock, do not expose this product to rain or moisture.
11. Do not dispose of batteries in the household trash or fire.
12. The mains plug of power adaptor is used as the disconnect device, it shall remain readily operable.
13. Unplug unit and clean only with damp cloth. Stronger cleaning agents, such as Benzene, thinner or similar materials can damage the surface of the unit.
14. CAUTION Risk of explosion if the battery is replaced by an incorrect type.

FCC Information

This equipment complies with FCC RF radiation exposure limits set forth for an uncontrolled environment. This device complies with Part 15 of the FCC Rules, operation is subject to the following two conditions:

- (1) This device may not cause harmful interference, and
 - (2) this device must accept any interference received, including interference that may cause undesired operation.
- Warning: Changes or modifications to this unit not expressly approved by the party responsible for compliance could void the user's authority to operate the equipment.
 - NOTE: This equipment has been tested and found to comply with the limits for a Class B digital device, pursuant to Part 15 of the FCC Rules.

These limits are designed to provide reasonable protection against harmful interference in a residential installation. This equipment generates, uses and can radiate radio frequency energy and, if not installed and used in accordance with the instructions, may cause harmful interference to radio communications.

This equipment should be installed and operated with minimum distance 20cm/8 in between the radiator & your body.

However, there is no guarantee that interference will not occur in a particular installation. If this equipment does cause harmful interference to radio or television reception, which can be determined by turning the equipment off and on, the user is encouraged to try to correct the interference by one or more of the following measures:

- Reorient or relocate the receiving antenna.
- Increase the separation between the equipment and receiver.
- Connect the equipment into an outlet on a circuit different from that to which the receiver is connected.
- Consult the dealer or an experienced radio/TV technician for help.

ISED Information

The device comply with ISED RF exposure requirement, users can obtain Canadian information on RF exposure and compliance.

This equipment complies with IC RSS-102 radiation exposure limits set forth for an uncontrolled environment.

This equipment should be installed and operated with a minimum distance of 20 cm between the radiator and your body.

This device contains licence-exempt transmitter(s)/receiver(s) that comply with Innovation, Science and Economic Development Canada's licence-exempt RSS(s). Operation is subject to the following two conditions:

- (1) This device may not cause interference.
- (2) This device must accept any interference, including interference that may cause undesired operation of the device.

Any Changes or modifications not expressly approved by the party responsible for compliance could void the user's authority to operate the equipment.

L'appareil est conforme aux exigences d'exposition RF ISED, les utilisateurs peuvent obtenir des informations canadiennes sur l'exposition aux RF et la conformité.

Cet équipement est conforme aux limites d'exposition aux radiations IC CNR-102 établies pour un environnement non contrôlé.

Cet équipement doit être installé et utilisé avec une distance minimale de 20 cm entre le radiateur et votre corps.

L'émetteur/récepteur exempt de licence contenu dans le présent appareil est conforme aux CNR d'Innovation, Sciences et Développement économique Canada applicables aux appareils radio exempts de licence. L'exploitation est autorisée aux deux conditions suivantes :

- (1) L'appareil ne doit pas produire de brouillage;
- (2) L'appareil doit accepter tout brouillage radioélectrique subi, même si le brouillage est susceptible d'en compromettre le fonctionnement.

Tout changement ou modification non expressément approuvé par la partie responsable de la conformité peut annuler l'autorité de l'utilisateur à utiliser l'équipement.

CAN ICES-3 (B) / NMB-3(B)